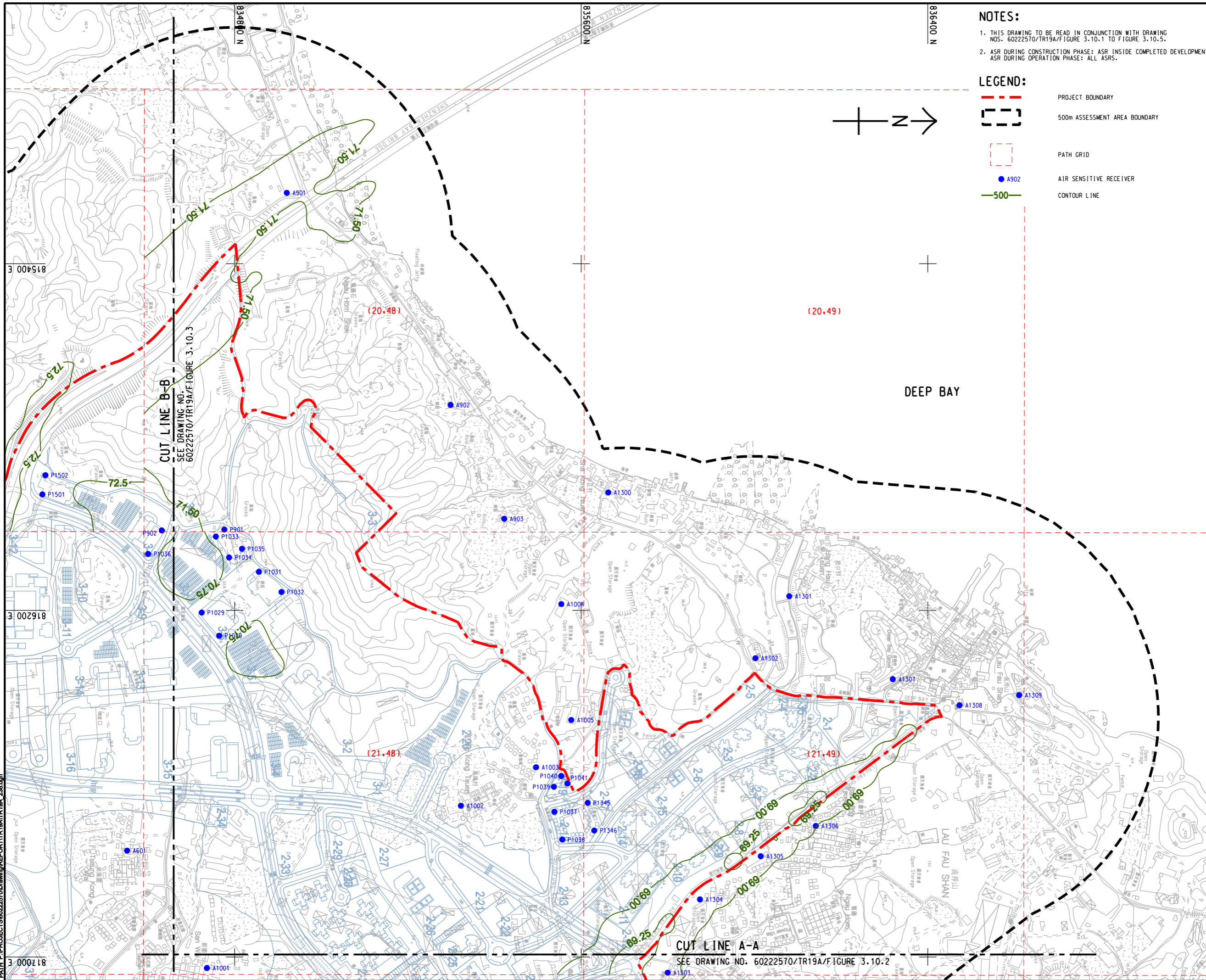


ISO A1 594mm x 841mm  
Approved:  
Checked:  
Designer:  
Project Management Initials:  
Pld File by: ZENGFX  
PATH: P:\PROJECTS\60222570\DRAWING\REPORT\TR19A\TR19A\_238.dgn



**NOTES:**

- THIS DRAWING TO BE READ IN CONJUNCTION WITH DRAWING NOS. 60222570/TR19A/FIGURE 3.10.1 TO FIGURE 3.10.5.
- ASR DURING CONSTRUCTION PHASE: ASR INSIDE COMPLETED DEVELOPMENT.  
ASR DURING OPERATION PHASE: ALL ASRS.

**LEGEND:**

- - - PROJECT BOUNDARY
- - - 500m ASSESSMENT AREA BOUNDARY
- - - PATH GRID
- A902 AIR SENSITIVE RECEIVER
- 500 CONTOUR LINE



**PROJECT**  
HUNG SHUI KIU NEW DEVELOPMENT AREA PLANNING AND ENGINEERING STUDY - INVESTIGATION

**CLIENT**  
CEDD  
Civil Engineering and Development Department  
Planning Department

**CONSULTANT**  
AECOM Asia Company Ltd.  
www.aecom.com

**SUB-CONSULTANTS**  
分判工程顧問公司

**ISSUE/REVISION**  
修訂

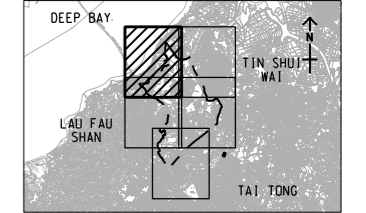
NO.	DATE	DESCRIPTION	CHK.

**STATUS**  
現狀

**SCALE**  
比例  
A3 1 : 8000

**DIMENSION UNIT**  
尺寸單位  
METRES

**KEY PLAN** A3 1 : 300000  
索引圖



**PROJECT NO.**  
項目編號  
60222570

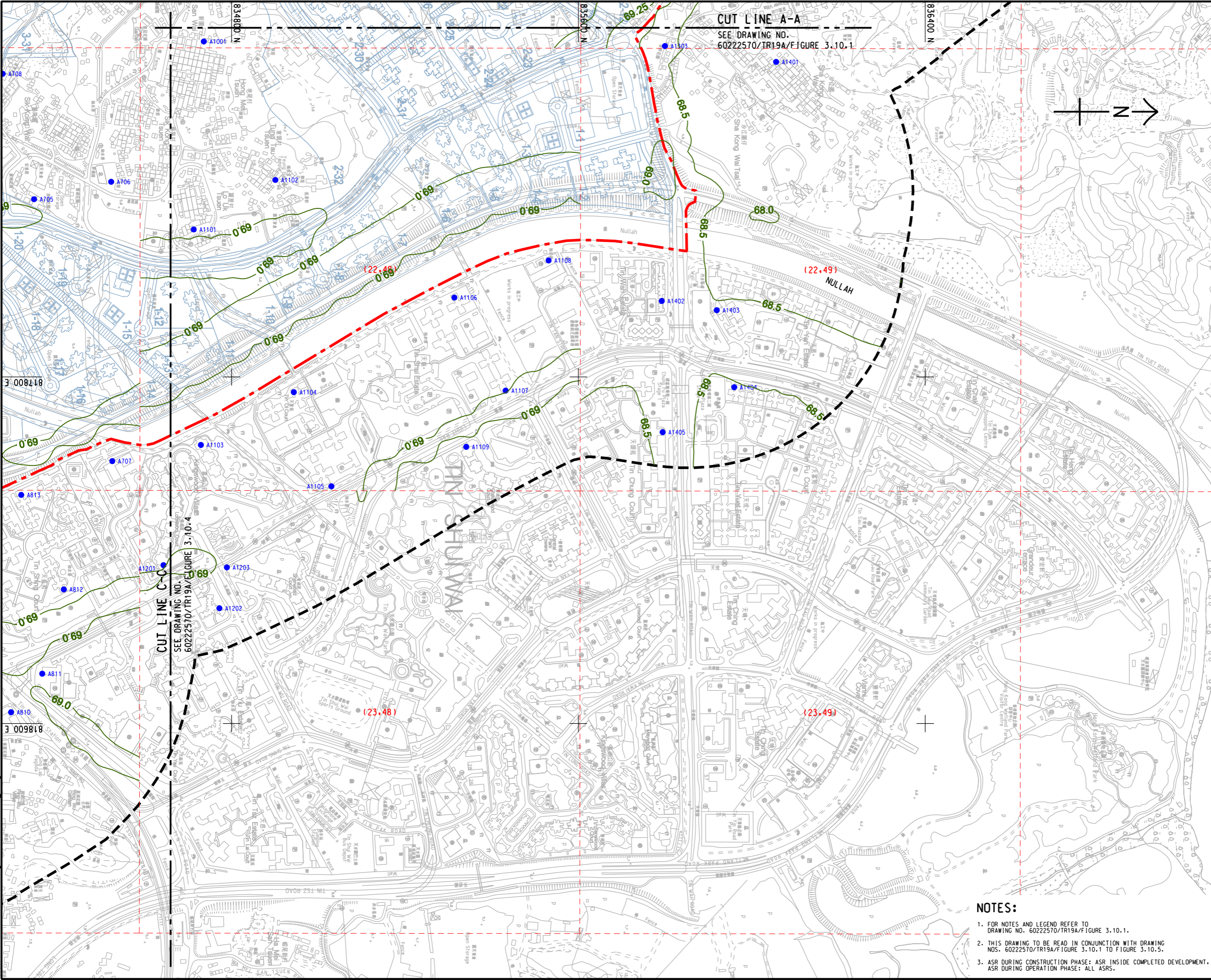
**AGREEMENT NO.**  
協議編號  
CE2/2011 (CE)

**SHEET TITLE**  
圖紙名稱  
CONTOURS OF CUMULATIVE 10th HIGHEST 24-HOUR FSP CONCENTRATION (ug/m<sup>3</sup>) AT 1.5m ABOVE GROUND (YEAR 2024 - 2030) (OPERATION PHASE)  
SHEET 1 OF 5

**SHEET NUMBER**  
圖紙編號  
60222570/TR19A/FIGURE 3.10.1

This drawing has been prepared for the use of AECOM's client. It may not be used, modified, reproduced or relied upon by third parties, except as required by law. AECOM accepts no responsibility, and disclaims any liability whatsoever, for any party that uses or relies on this drawing without AECOM's express written consent. Do not scale this document. All measurements must be obtained from the stated dimensions.

ISO A1 594mm x 841mm  
 Approved:  
 Checked:  
 Designer:  
 Project Management Initials:  
 Pld File by: ZENGXF  
 PATH: P:\PROJECTS\60222570\DRAWING\REPORT\TR19A\TR19A\_236.dgn



# AECOM

PROJECT  
**HUNG SHUI KIU NEW DEVELOPMENT AREA PLANNING AND ENGINEERING STUDY - INVESTIGATION**

CLIENT  
 CEDD  
 土木工程拓展署  
 Civil Engineering and Development Department  
 規劃署  
 Planning Department

CONSULTANT  
 工程顧問公司  
 AECOM Asia Company Ltd.  
 www.aecom.com

SUB-CONSULTANTS  
 分判工程顧問公司

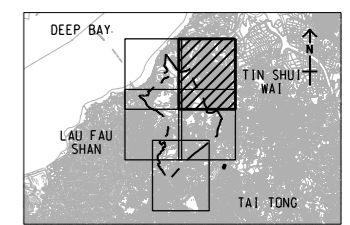
ISSUE/REVISION  
 修訂

NO.	DATE	DESCRIPTION	CHK.

STATUS  
 階段

SCALE  
 比例  
 A3 1 : 8000  
 A4 1 : 30000

DIMENSION UNIT  
 尺寸單位  
 METRES



PROJECT NO.  
 項目編號  
 60222570

AGREEMENT NO.  
 協議編號  
 CE2/2011 (CE)

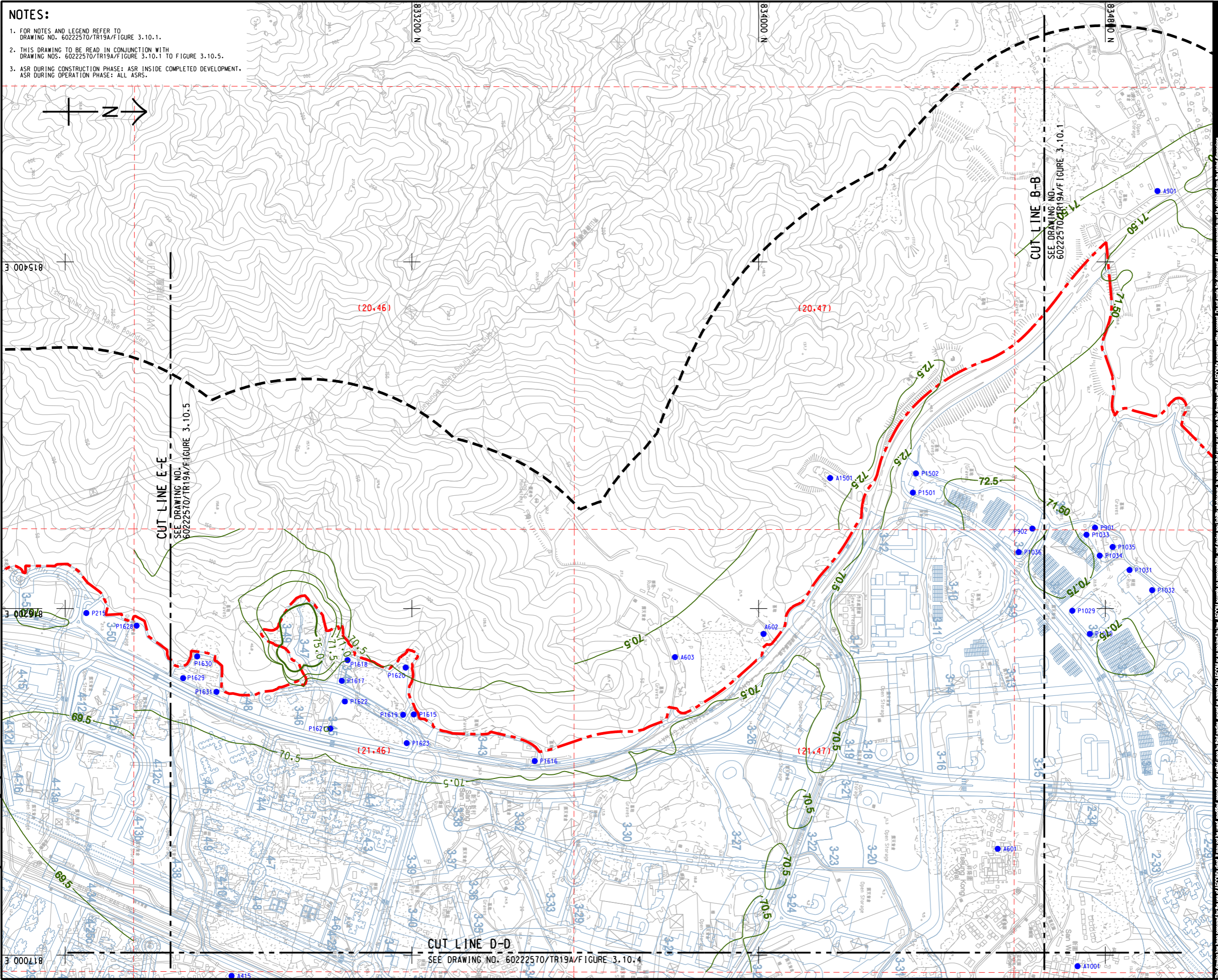
SHEET TITLE  
 圖紙名稱  
 CONTOURS OF CUMULATIVE 10th HIGHEST 24-HOUR FSP CONCENTRATION (ug/m<sup>3</sup>) AT 1.5m ABOVE GROUND (YEAR 2024 - 2030) (OPERATION PHASE)  
 SHEET 2 OF 5

SHEET NUMBER  
 圖紙編號  
 60222570/TR19A/FIGURE 3.10.2

- NOTES:
- FOR NOTES AND LEGEND REFER TO DRAWING NO. 60222570/TR19A/FIGURE 3.10.1.
  - THIS DRAWING TO BE READ IN CONJUNCTION WITH DRAWING NOS. 60222570/TR19A/FIGURE 3.10.1 TO FIGURE 3.10.5.
  - ASR DURING CONSTRUCTION PHASE: ASR INSIDE COMPLETED DEVELOPMENT.  
 ASR DURING OPERATION PHASE: ALL ASRS.

This drawing has been prepared for the use of AECOM's client. It may not be used, modified, reproduced or relied upon by third parties, except as required by law. AECOM accepts no responsibility, and denies any liability whatsoever, for any party that uses or relies on this drawing without AECOM's express written consent. Do not scale this document. All measurements must be obtained from the related dimensions.

ISO A1 594mm x 841mm  
 Approved:  
 Checked:  
 Designer:  
 Project Management Initials:  
 Pld File by: CHEWRH  
 PATH: P:\PROJECTS\60222570\DRAWING\REPORT\TR19A\TR19A\_240.dgn  
 817000 E



- NOTES:**
- FOR NOTES AND LEGEND REFER TO DRAWING NO. 60222570/TR19A/FIGURE 3.10.1.
  - THIS DRAWING TO BE READ IN CONJUNCTION WITH DRAWING NOS. 60222570/TR19A/FIGURE 3.10.1 TO FIGURE 3.10.5.
  - ASR DURING CONSTRUCTION PHASE: ASR INSIDE COMPLETED DEVELOPMENT.  
ASR DURING OPERATION PHASE: ALL ASRS.

**AECOM**

**PROJECT**  
 HUNG SHUI KIU NEW DEVELOPMENT AREA PLANNING AND ENGINEERING STUDY - INVESTIGATION

**CLIENT**  
 CEDD  
 土木工程拓展署  
 Civil Engineering and Development Department

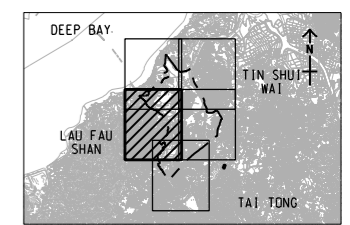
**CONSULTANT**  
 AECOM Asia Company Ltd.  
 www.aecom.com

**SUB-CONSULTANTS**  
 分判工程顧問公司

**ISSUE/REVISION**

NO.	DATE	DESCRIPTION	CHK.

**SCALE**  
 比例: A3 1:8000  
**DIMENSION UNIT**  
 尺寸單位: METRES



**PROJECT NO.**  
 項目編號: 60222570

**AGREEMENT NO.**  
 協議編號: CE2/2011 (CE)

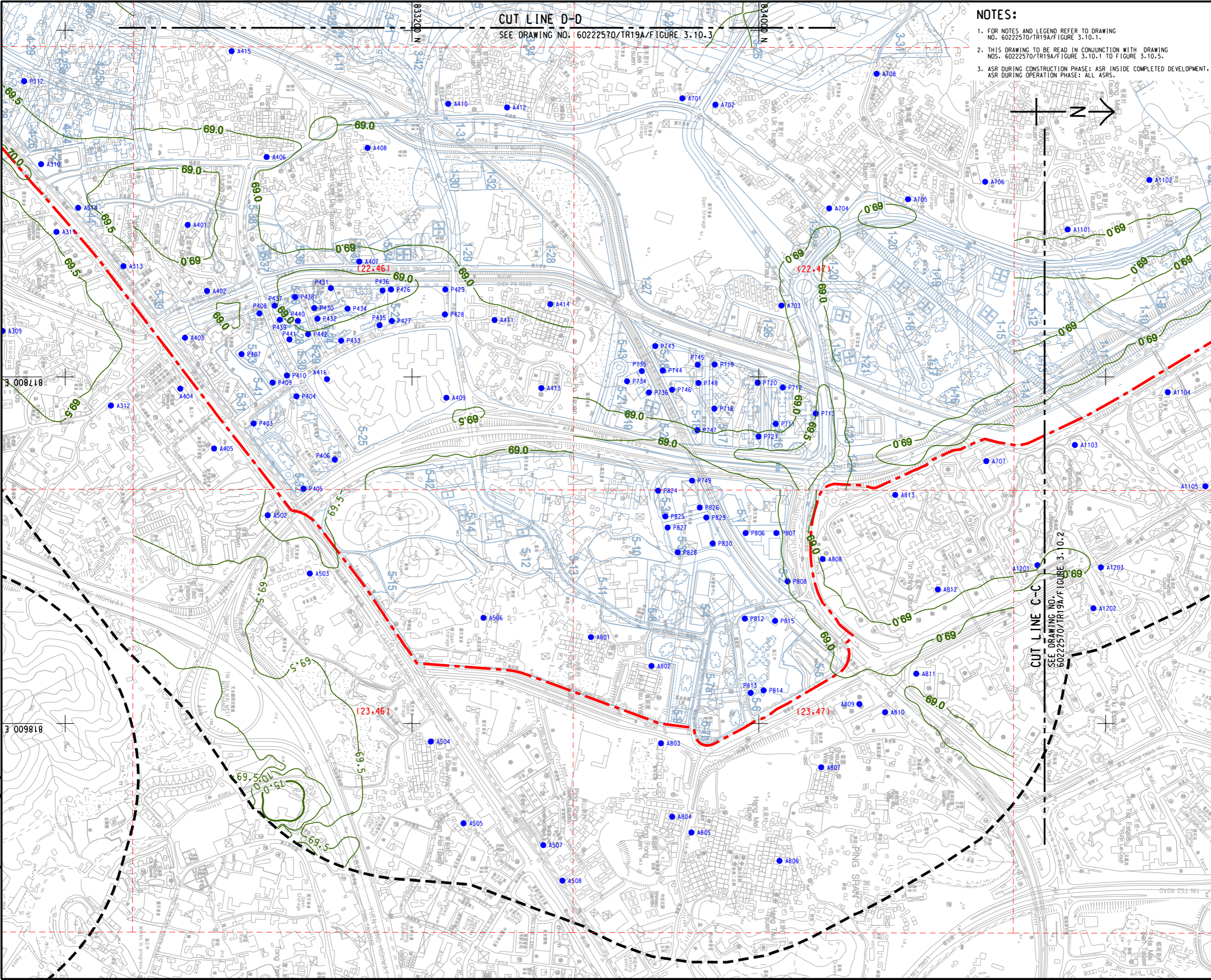
**SHEET TITLE**  
 圖紙名稱: CONTOURS OF CUMULATIVE 10th HIGHEST 24-HOUR FSP CONCENTRATION (ug/m<sup>3</sup>) AT 1.5m ABOVE GROUND (YEAR 2024 - 2030) (OPERATION PHASE)  
 SHEET 3 OF 5

**SHEET NUMBER**  
 圖紙編號: 60222570/TR19A/FIGURE 3.10.3

ISO A1 594mm x 841mm  
Approved:  
Checked:  
Designer:  
Project Management Initials:  
Pld File by: ZENGFX  
PATH: P:\PROJECTS\60222570\DRAWING\REPORT\TR19A\TR19A\_241.dgn

CUT LINE D-D  
SEE DRAWING NO. 60222570/TR19A/FIGURE 3.10.3

- NOTES:**
- FOR NOTES AND LEGEND REFER TO DRAWING NO. 60222570/TR19A/FIGURE 3.10.1.
  - THIS DRAWING TO BE READ IN CONJUNCTION WITH DRAWING NOS. 60222570/TR19A/FIGURE 3.10.1 TO FIGURE 3.10.5.
  - ASR DURING CONSTRUCTION PHASE: ASR INSIDE COMPLETED DEVELOPMENT, ASR DURING OPERATION PHASE: ALL ASRS.



**AECOM**

**PROJECT**  
HUNG SHUI KIU NEW DEVELOPMENT AREA PLANNING AND ENGINEERING STUDY - INVESTIGATION

**CLIENT**  
CEDD  
Civil Engineering and Development Department

**CONSULTANT**  
AECOM Asia Company Ltd.  
www.aecom.com

**SUB-CONSULTANTS**  
分判工程顧問公司

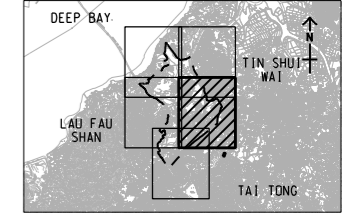
**ISSUE/REVISION**

IR	DATE	DESCRIPTION	CHK

**STATUS**

**SCALE**  
A3 1: 8000  
KEY PLAN A3 1: 300000

**DIMENSION UNIT**  
METRES



**PROJECT NO.**  
60222570

**AGREEMENT NO.**  
CE2/2011 (CE)

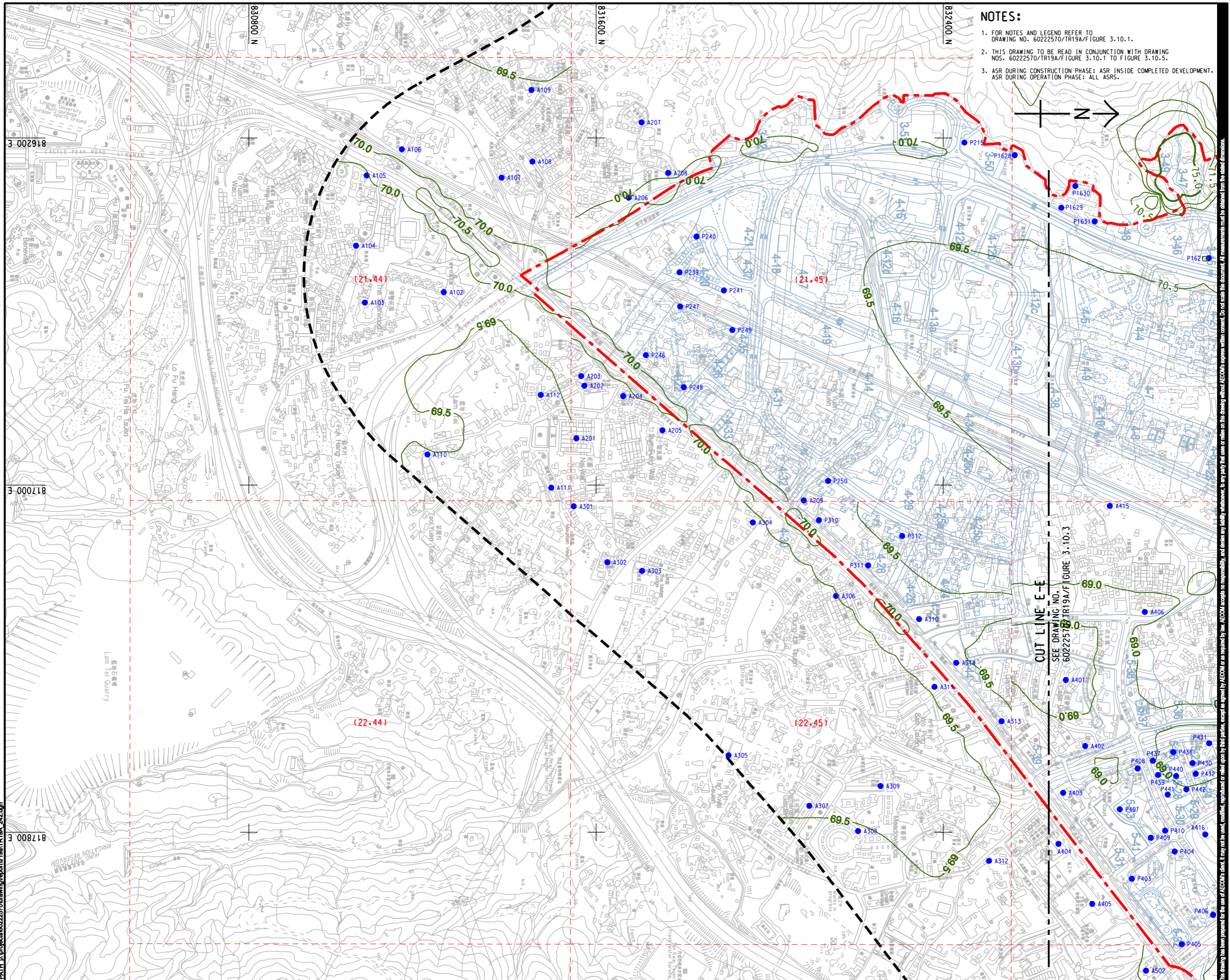
**SHEET TITLE**  
CONTOURS OF CUMULATIVE 10th HIGHEST 24-HOUR FSP CONCENTRATION (ug/m³) AT 1.5m ABOVE GROUND (YEAR 2024 - 2030) (OPERATION PHASE)

**SHEET NUMBER**  
60222570/TR19A/FIGURE 3.10.4

SHEET 4 OF 5

This drawing has been prepared for the use of AECOM's client. It may not be used, modified, reproduced or relied upon by third parties, except as approved by AECOM or as required by law. AECOM accepts no responsibility, and denies any liability whatsoever, for any party that uses or relies on this drawing without AECOM's express written consent. Do not scale this drawing. All measurements must be obtained from the related dimensions.

ISO A1 594mm x 841mm  
 Approved:  
 Checked:  
 Designer:  
 Project Management Initials:  
 Pld File by: ZHOUJMH  
 PATH: E:\projects\60222570\drawing\center\GnTR19A\_242.dgn



- NOTES:**
- FOR NOTES AND LEGEND REFER TO DRAWING NO. 60222570/TR19A/FIGURE 3.10.1.
  - THIS DRAWING TO BE READ IN CONJUNCTION WITH DRAWING NOS. 60222570/TR19A/FIGURE 3.10.1 TO FIGURE 3.10.5.
  - ASR DURING CONSTRUCTION PHASE: ASR INSIDE COMPLETED DEVELOPMENT, ASR DURING OPERATION PHASE: ALL ASRS.

**AECOM**

**PROJECT**  
 HUNG SHUI KIU NEW DEVELOPMENT AREA PLANNING AND ENGINEERING STUDY - INVESTIGATION

**CLIENT**  
 土木工程拓展署  
 Civil Engineering and Development Department

**CONSULTANT**  
 AECOM Asia Company Ltd.  
 www.aecom.com

**SUB-CONSULTANTS**  
 分判工程顧問公司

**規劃署**  
 Planning Department

**ISSUE/REVISION**

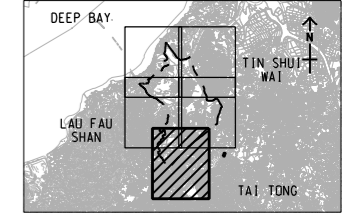
NO.	DATE	DESCRIPTION	CHK.

**STATUS**  
 現狀

**SCALE**  
 比例尺: A3 1 : 8000

**DIMENSION UNIT**  
 尺寸單位: METRES

**KEY PLAN**  
 索引圖: A3 1 : 300000



**PROJECT NO.**  
 項目編號: 60222570

**AGREEMENT NO.**  
 協議編號: CE2/2011 (CE)

**SHEET TITLE**  
 圖紙名稱: CONTOURS OF CUMULATIVE 10th HIGHEST 24-HOUR FSP CONCENTRATION (ug/m<sup>3</sup>) AT 1.5m ABOVE GROUND (YEAR 2024 - 2030) (OPERATION PHASE)

**SHEET NUMBER**  
 圖紙編號: SHEET 5 OF 5

**60222570/TR19A/FIGURE 3.10.5**

This drawing has been prepared for the use of AECOM's client. It may not be used, modified, reproduced or relied upon by third parties, except as required by law. AECOM accepts no responsibility, and denies any liability whatsoever, to any party, for losses or claims on this drawing without AECOM's express written consent. Do not scale this drawing. All measurements must be obtained from the stated dimensions.