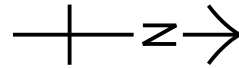


NOTES:

- THIS DRAWING TO BE READ IN CONJUNCTION WITH DRAWING NOS. 60222570/TR19A/FIGURE 3.11.1 TO FIGURE 3.11.5.
- ASR DURING CONSTRUCTION PHASE: ASR INSIDE COMPLETED DEVELOPMENT. ASR DURING OPERATION PHASE: ALL ASRS.

LEGEND:

- PROJECT BOUNDARY
- 500m ASSESSMENT AREA BOUNDARY
- PATH GRID
- A902 AIR SENSITIVE RECEIVER
- 500 CONTOUR LINE



HUNG SHUI KIU NEW DEVELOPMENT AREA PLANNING AND ENGINEERING STUDY - INVESTIGATION



AECOM Asia Company Ltd.
www.aecom.com

ISSUE/REVISION

NO.	DATE	DESCRIPTION	CHK.

STATUS

SCALE

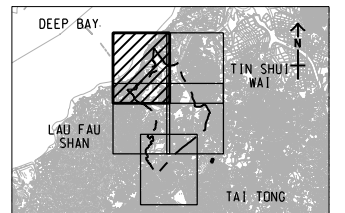
A3 1: 8000

DIMENSION UNIT

METRES

KEY PLAN

A3 1: 300000



PROJECT NO.

60222570

AGREEMENT NO.

CE2/2011 (CE)

SHEET TITLE

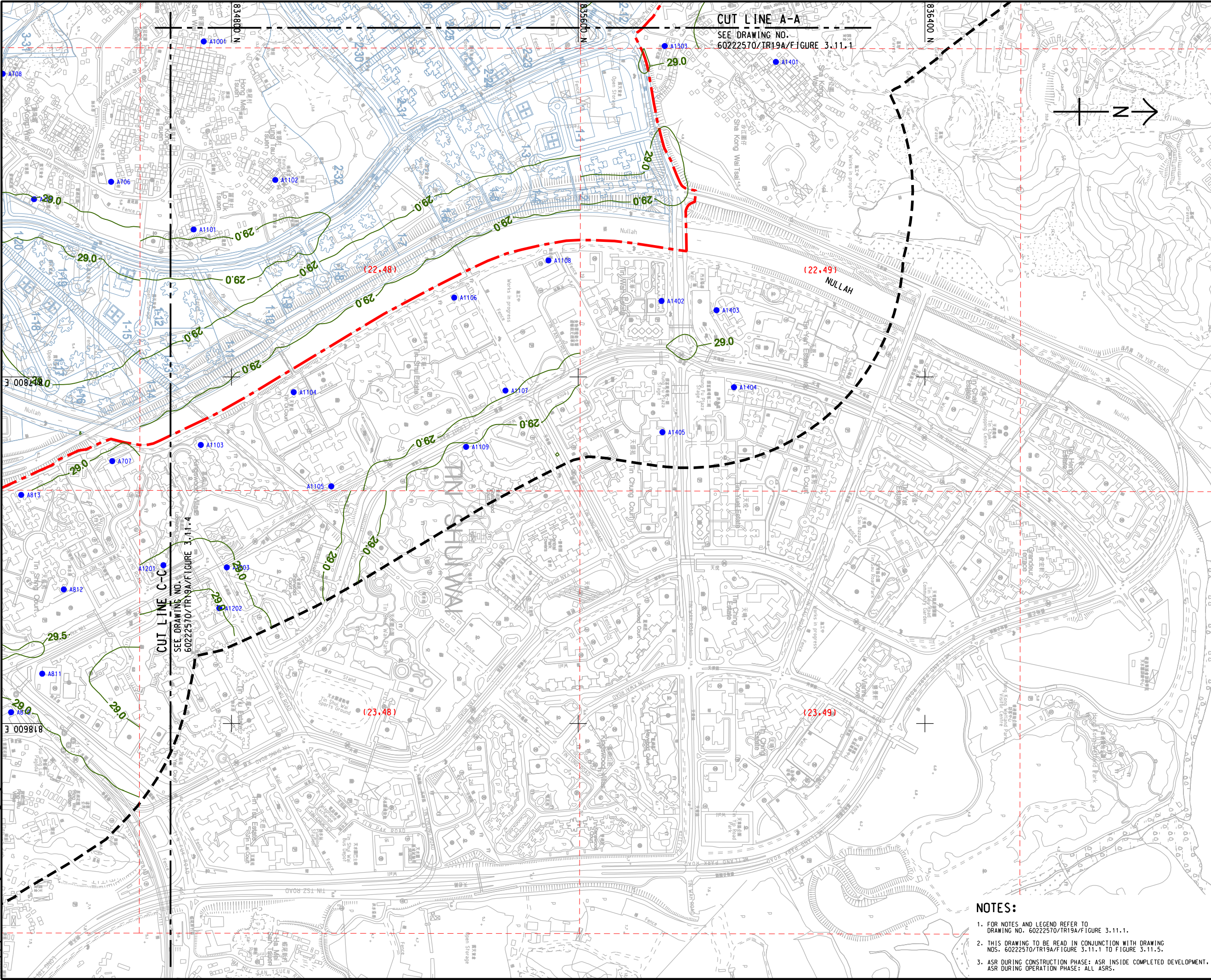
CONTOURS OF CUMULATIVE ANNUAL FSP CONCENTRATION (ug/m³) AT 1.5m ABOVE GROUND (YEAR 2024 - 2030) (OPERATION PHASE)

SHEET NUMBER

60222570/TR19A/FIGURE 3.11.1

This drawing has been prepared for the use of AECOM's client. It may not be used, modified, reproduced or relied upon by third parties, except as required by law. AECOM accepts no responsibility, and denies any liability whatsoever, to any party that uses or relies on this drawing without AECOM's express written consent. Do not scale this document. All measurements must be obtained from the stated dimensions.

Pld File by: ANH; PATH: E:\projects\60222570\Drawing\REPORT\TR19A\TR19A_244.dgn
 ISO A1 594mm x 841mm
 Approved:
 Checked:
 Designer:
 Project Management Initials:



PROJECT
HUNG SHUI KIU NEW DEVELOPMENT AREA PLANNING AND ENGINEERING STUDY - INVESTIGATION

CLIENT
 CEDD
 土木工程拓展署
 Civil Engineering and Development Department
 規劃署
 Planning Department

CONSULTANT
 工程顧問公司
 AECOM Asia Company Ltd.
 www.aecom.com

SUB-CONSULTANTS
 分判工程顧問公司

ISSUE/REVISION
 修訂

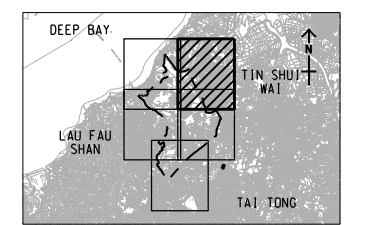
IR	DATE	DESCRIPTION	CHK.

STATUS
 圖版

SCALE
 比例
 A3 1 : 8000

DIMENSION UNIT
 尺寸單位
 METRES

KEY PLAN
 索引圖
 A3 1 : 300000



PROJECT NO.
 項目編號
 60222570

AGREEMENT NO.
 協議編號
 CE2/2011 (CE)

SHEET TITLE
 圖紙名稱
 CONTOURS OF CUMULATIVE ANNUAL FSP CONCENTRATION (ug/m³) AT 1.5m ABOVE GROUND (YEAR 2024 - 2030) (OPERATION PHASE)
 SHEET 2 OF 5

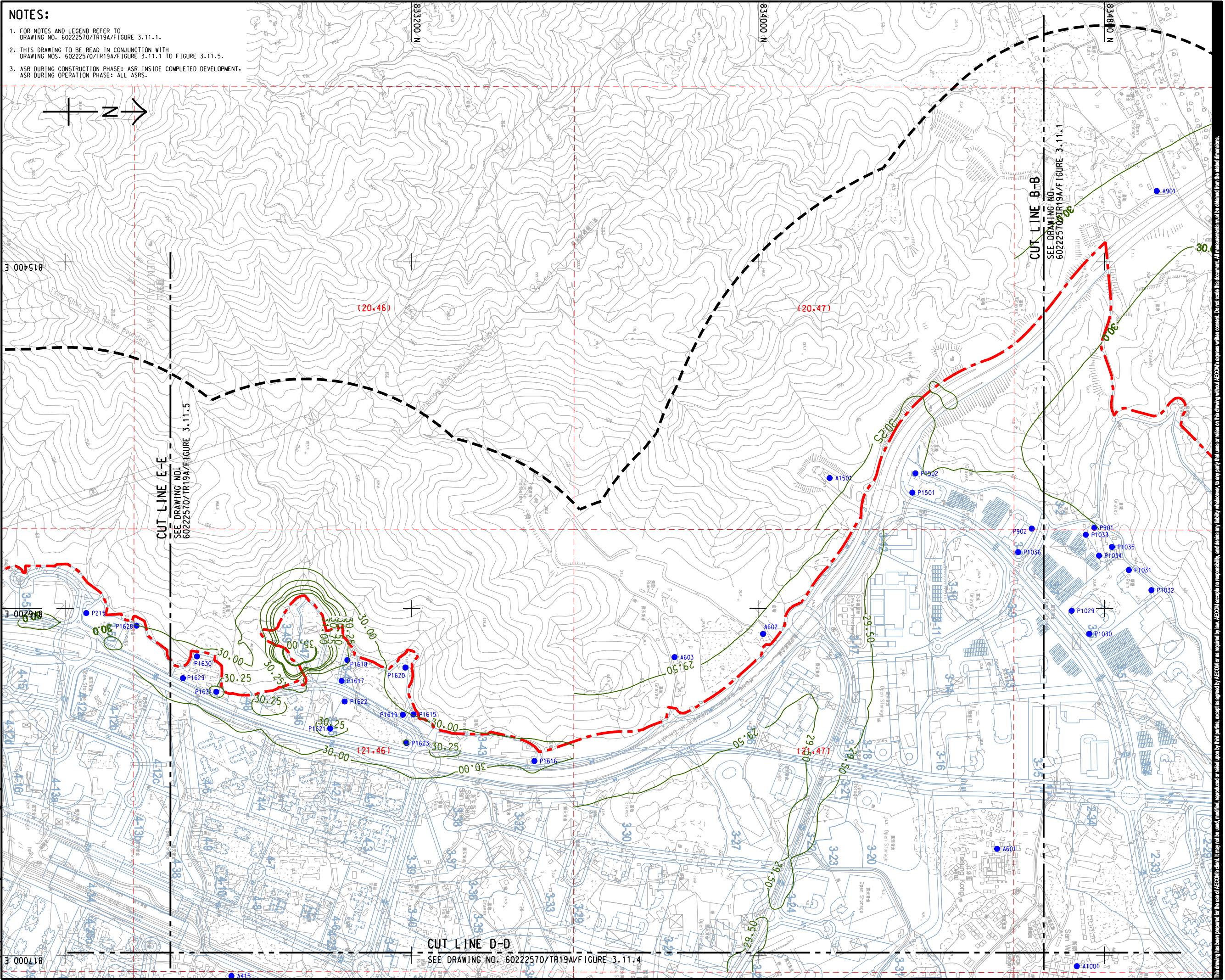
SHEET NUMBER
 圖紙編號
 60222570/TR19A/FIGURE 3.11.2

NOTES:

- FOR NOTES AND LEGEND REFER TO DRAWING NO. 60222570/TR19A/FIGURE 3.11.1.
- THIS DRAWING TO BE READ IN CONJUNCTION WITH DRAWING NOS. 60222570/TR19A/FIGURE 3.11.1 TO FIGURE 3.11.5.
- ASR DURING CONSTRUCTION PHASE: ASR INSIDE COMPLETED DEVELOPMENT.
 ASR DURING OPERATION PHASE: ALL ASRS.

This drawing has been prepared for the use of AECOM's client. It may not be used, modified, reproduced or relied upon by third parties, except as required by law. AECOM accepts no responsibility, and denies any liability whatsoever, for any party that uses or relies on this drawing without AECOM's express written consent. Do not scale this document. All measurements must be obtained from the related dimensions.

ISO A1 594mm x 841mm
Approved:
Checked:
Designer:
Project Management Initials:
Pld File by: ANH\60222570\Drawings\REPORT\TR19A\TR19A_245.dgn



NOTES:

1. FOR NOTES AND LEGEND REFER TO DRAWING NO. 60222570/TR19A/FIGURE 3.11.1.
2. THIS DRAWING TO BE READ IN CONJUNCTION WITH DRAWING NOS. 60222570/TR19A/FIGURE 3.11.1 TO FIGURE 3.11.5.
3. ASR DURING CONSTRUCTION PHASE: ASR INSIDE COMPLETED DEVELOPMENT.
ASR DURING OPERATION PHASE: ALL ASRS.

AECOM

PROJECT
項目

HUNG SHUI KIU NEW DEVELOPMENT AREA PLANNING AND ENGINEERING STUDY - INVESTIGATION

CLIENT
業主

CEDD
土木工程拓展署
Civil Engineering and Development Department

Planning Department
規劃署

CONSULTANT
顧問公司

AECOM Asia Company Ltd.
www.aecom.com

SUB-CONSULTANTS
分判工程顧問公司

ISSUE/REVISION
修訂

IR	DATE	DESCRIPTION	CHK.

STATUS
階段

SCALE
比例

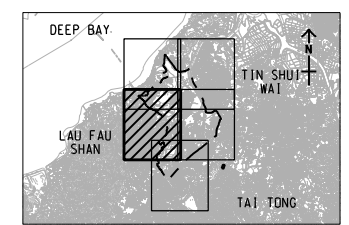
A3 1 : 8000

DIMENSION UNIT
尺寸單位

METRES

KEY PLAN
索引圖

A3 1 : 300000



PROJECT NO.
項目編號

60222570

AGREEMENT NO.
協議編號

CE2/2011 (CE)

SHEET TITLE
圖名

CONTOURS OF CUMULATIVE ANNUAL FSP CONCENTRATION (ug/m³) AT 1.5m ABOVE GROUND (YEAR 2024 - 2030) (OPERATION PHASE)

SHEET 3 OF 5

SHEET NUMBER
圖號

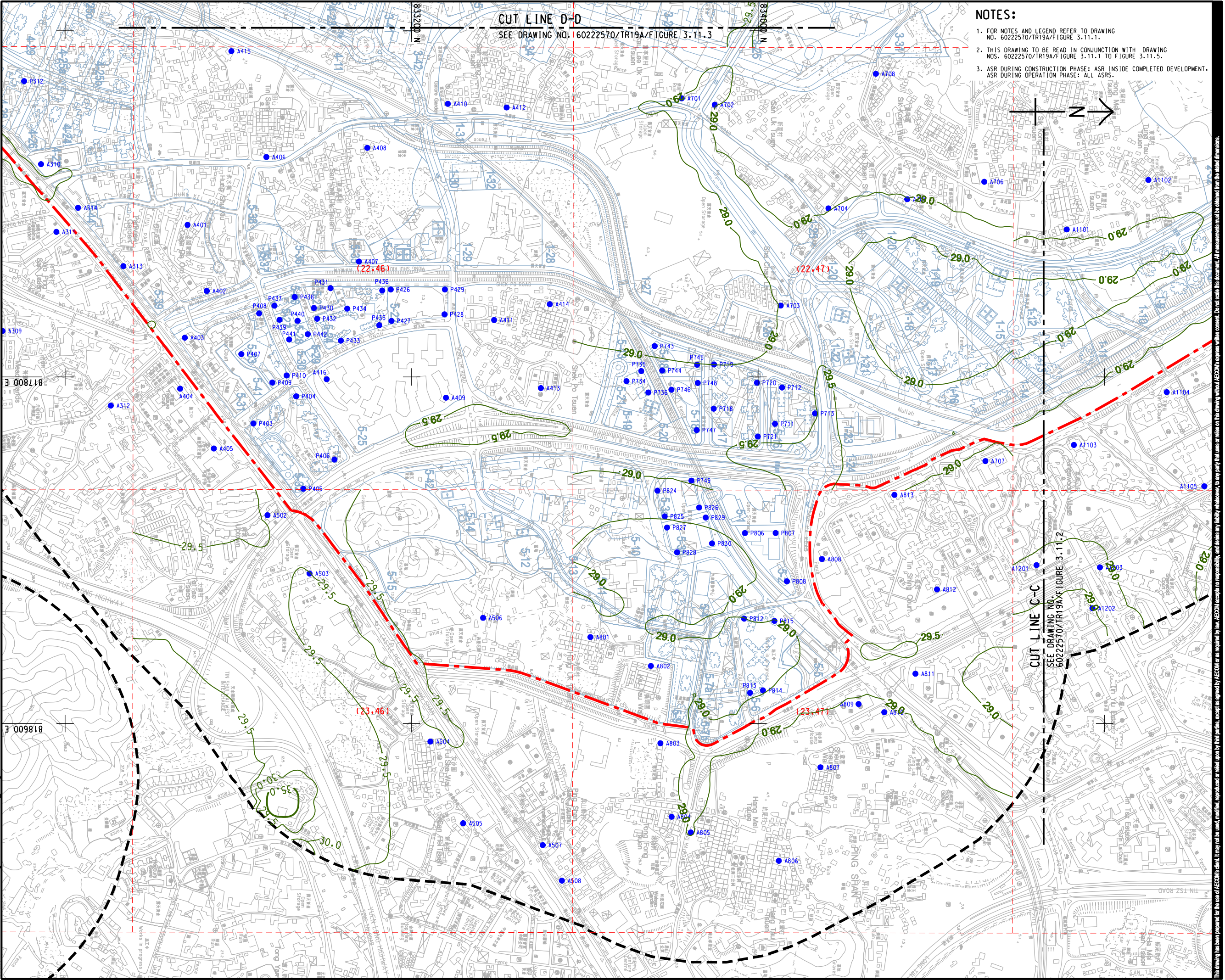
60222570/TR19A/FIGURE 3.11.3

This drawing has been prepared for the use of AECOM's client. It may not be used, modified, reproduced or relied upon by third parties, except as required by law. AECOM accepts no responsibility, and disclaims any liability whatsoever, for any party that uses or relies on this drawing without AECOM's express written consent. Do not scale this document. All measurements must be obtained from the related dimensions.

ISO A1 594mm x 841mm
Approved:
Checked:
Designer:
Project Management Initials:
Pld File by: ZENGXF
PATH: P:\PROJECTS\60222570\DRAWING\REPORT\TR19A\TR19A_246.dgn

CUT LINE D-D
SEE DRAWING NO. 60222570/TR19A/FIGURE 3.11.3

- NOTES:**
- FOR NOTES AND LEGEND REFER TO DRAWING NO. 60222570/TR19A/FIGURE 3.11.1.
 - THIS DRAWING TO BE READ IN CONJUNCTION WITH DRAWING NOS. 60222570/TR19A/FIGURE 3.11.1 TO FIGURE 3.11.5.
 - ASR DURING CONSTRUCTION PHASE: ASR INSIDE COMPLETED DEVELOPMENT, ASR DURING OPERATION PHASE: ALL ASRS.



AECOM

PROJECT
HUNG SHUI KIU NEW DEVELOPMENT AREA PLANNING AND ENGINEERING STUDY - INVESTIGATION

CLIENT
CEDD
土木工務發展署
Civil Engineering and Development Department
規劃署
Planning Department

CONSULTANT
AECOM Asia Company Ltd.
www.aecom.com

SUB-CONSULTANTS
分判工程顧問公司

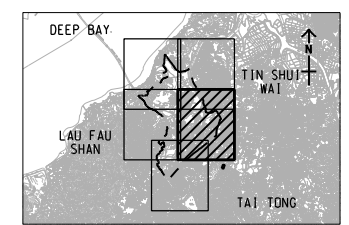
ISSUE/REVISION

IR	DATE	DESCRIPTION	CHK

STATUS

SCALE
A3 1: 8000
KEY PLAN A3 1: 300000

DIMENSION UNIT
METRES



PROJECT NO.
60222570

AGREEMENT NO.
CE2/2011 (CE)

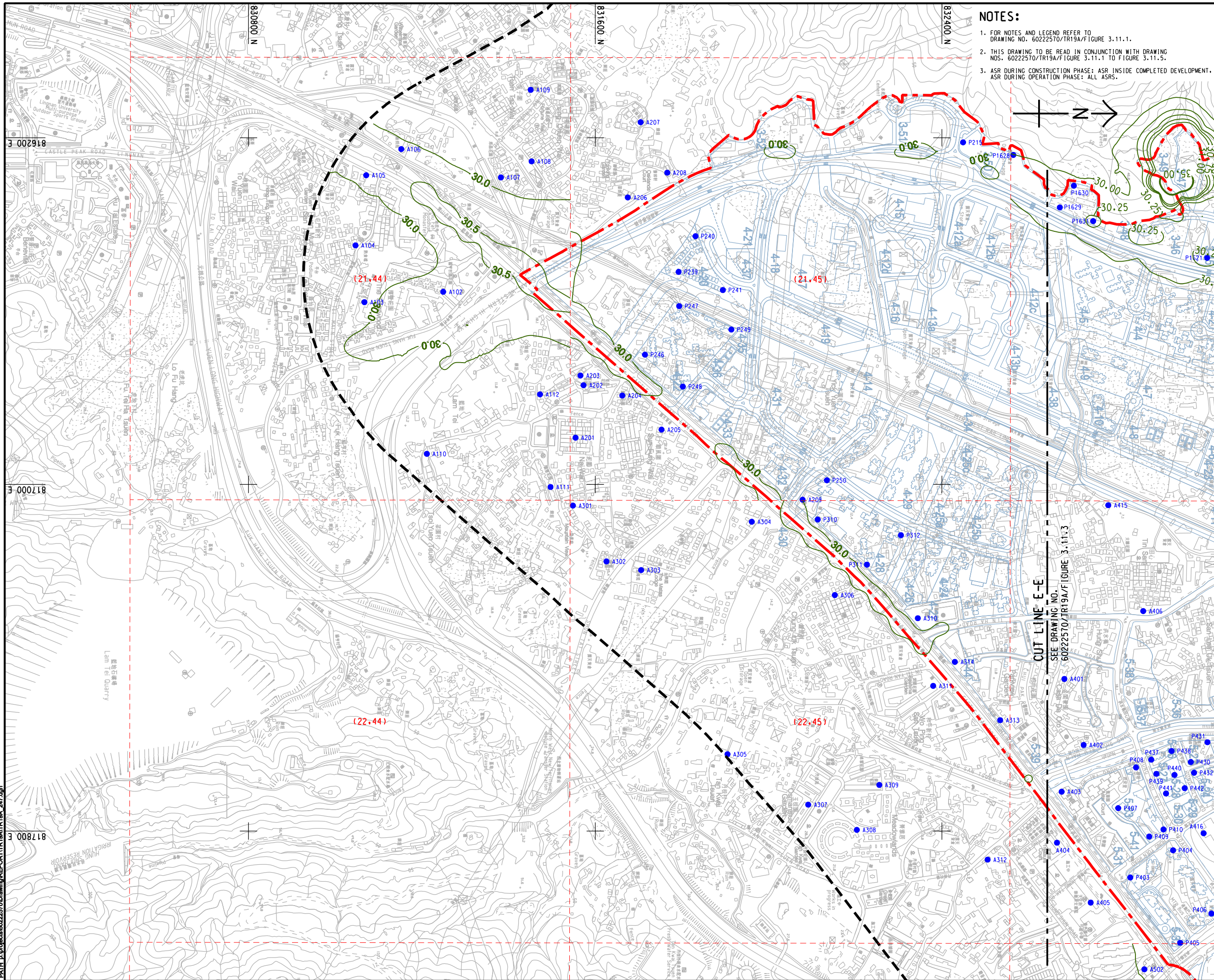
SHEET TITLE
CONTOURS OF CUMULATIVE ANNUAL FSP CONCENTRATION (ug/m³) AT 1.5m ABOVE GROUND (YEAR 2024 - 2030) (OPERATION PHASE)

SHEET NUMBER
60222570/TR19A/FIGURE 3.11.4

SHEET 4 OF 5

This drawing has been prepared for the use of AECOM's client. It may not be used, modified, reproduced or relied upon by third parties, except as approved by AECOM or as required by law. AECOM accepts no responsibility, and disclaims any liability whatsoever, for any party that uses or relies on this drawing without AECOM's express written consent. Do not scale this drawing. All measurements must be obtained from the related dimensions.

ISO A1 594mm x 841mm
Approved:
Checked:
Designer:
Project Management Initials:
Pld File by: ANH\60222570\Drawing\REPORT\TR19A\TR19A_247.dgn



- NOTES:**
- FOR NOTES AND LEGEND REFER TO DRAWING NO. 60222570/TR19A/FIGURE 3.11.1.
 - THIS DRAWING TO BE READ IN CONJUNCTION WITH DRAWING NOS. 60222570/TR19A/FIGURE 3.11.1 TO FIGURE 3.11.5.
 - ASR DURING CONSTRUCTION PHASE: ASR INSIDE COMPLETED DEVELOPMENT, ASR DURING OPERATION PHASE: ALL ASRS.

AECOM

PROJECT
HUNG SHUI KIU NEW DEVELOPMENT AREA PLANNING AND ENGINEERING STUDY - INVESTIGATION

CLIENT
CEDD
Civil Engineering and Development Department
Planning Department

CONSULTANT
AECOM Asia Company Ltd.
www.aecom.com

SUB-CONSULTANTS
分判工程顧問公司

ISSUE/REVISION

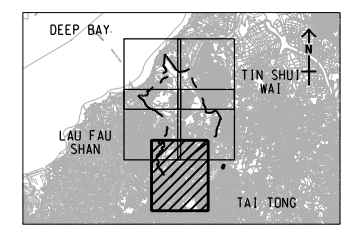
IR	DATE	DESCRIPTION	CHK.

STATUS

SCALE
A3 1 : 8000

DIMENSION UNIT
METRES

KEY PLAN
A3 1 : 300000



PROJECT NO.
60222570

AGREEMENT NO.
CE2/2011 (CE)

SHEET TITLE
CONTOURS OF CUMULATIVE ANNUAL FSP CONCENTRATION (ug/m³) AT 1.5m ABOVE GROUND (YEAR 2024 - 2030) (OPERATION PHASE)

SHEET NUMBER
60222570/TR19A/FIGURE 3.11.5

SHEET 5 OF 5

This drawing has been prepared for the use of AECOM's client. It may not be used, modified, reproduced or relied upon by third parties, except as approved by AECOM or as required by law. AECOM accepts no responsibility, and denies any liability whatsoever, to any party, that uses or relies on this drawing without AECOM's express written consent. Do not scale this document. All measurements must be obtained from the stated dimensions.