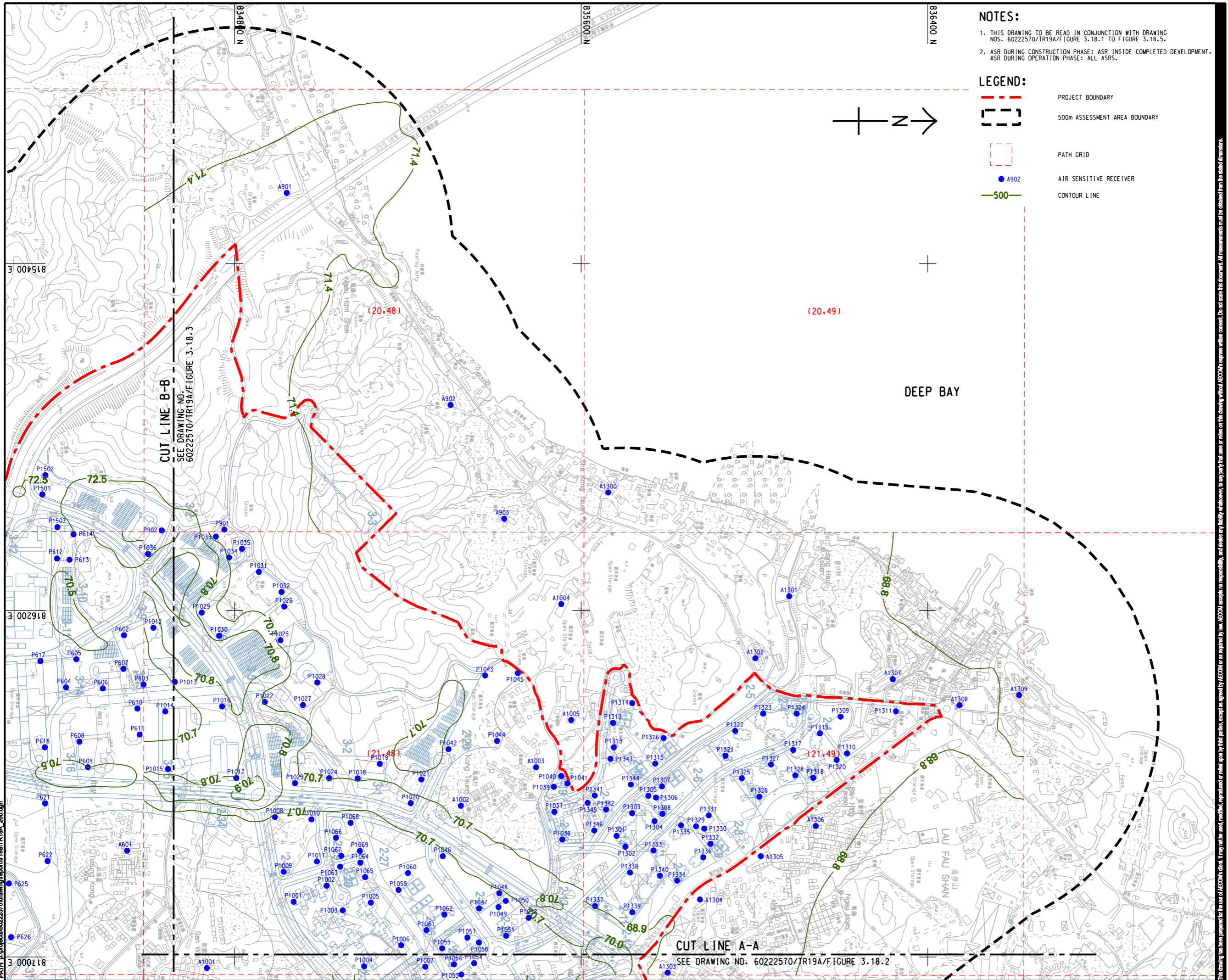


ISO A1 594mm x 841mm
 Approved:
 Checked:
 Designer:
 Project Management Initials:
 Pld File by: zhaohf
 PATH: E:\projects\60222570\drawing\center\0a1\TR19A_260.dgn
 E 17000 18



NOTES:

- THIS DRAWING TO BE READ IN CONJUNCTION WITH DRAWING NOS. 60222570/TR19A/FIGURE 3.18.1 TO FIGURE 3.18.5.
- ASR DURING CONSTRUCTION PHASE: ASR INSIDE COMPLETED DEVELOPMENT.
ASR DURING OPERATION PHASE: ALL ASRS.

LEGEND:

- PROJECT BOUNDARY
- 500m ASSESSMENT AREA BOUNDARY
- PATH GRID
- AIR SENSITIVE RECEIVER
- CONTOUR LINE

AECOM

PROJECT
HUNG SHUI KIU NEW DEVELOPMENT AREA PLANNING AND ENGINEERING STUDY - INVESTIGATION

CLIENT
 CEDD
 Civil Engineering and Development Department
 土木工程拓展署
 規劃署

CONSULTANT
 AECOM Asia Company Ltd.
 www.aecom.com

SUB-CONSULTANTS
 分判工程顧問公司

ISSUE/REVISION

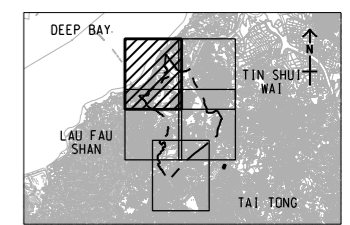
NO.	DATE	DESCRIPTION	CHK.

STATUS
 現狀

SCALE
 比例
 A3 1 : 8000

DIMENSION UNIT
 尺寸單位
 METRES

KEY PLAN A3 1 : 300000



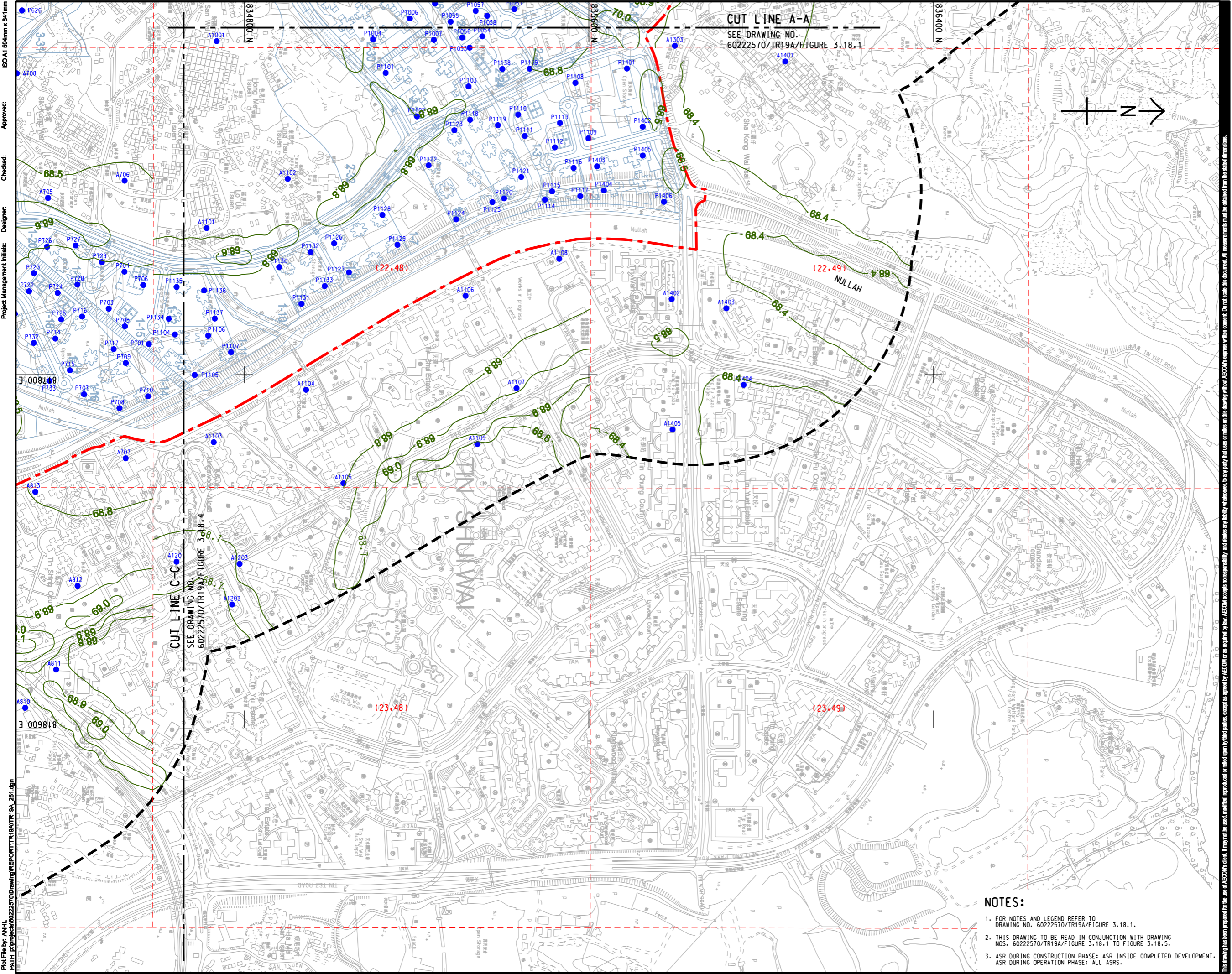
PROJECT NO.
 項目編號
 60222570

AGREEMENT NO.
 協議編號
 CE2/2011 (CE)

SHEET TITLE
 圖紙名稱
 CONTOURS OF CUMULATIVE 10th HIGHEST 24-HOUR FSP CONCENTRATION (ug/m³) AT 1.5m ABOVE GROUND (YEAR 2031 - 2039) (OPERATION PHASE)
 SHEET 1 OF 5

SHEET NUMBER
 圖紙編號
 60222570/TR19A/FIGURE 3.18.1

This drawing has been prepared for the use of AECOM's client. It may not be used, modified, reproduced or relied upon by third parties, except as required by law. AECOM accepts no responsibility, and denies any liability whatsoever, for any party that uses or relies on this drawing without AECOM's express written consent. Do not scale this document. All measurements must be obtained from the stated dimensions.



AECOM

PROJECT
HUNG SHUI KIU NEW DEVELOPMENT AREA PLANNING AND ENGINEERING STUDY - INVESTIGATION

CLIENT
CEDD
 土木工程拓展署
 Civil Engineering and Development Department

CONSULTANT
AECOM Asia Company Ltd.
 www.aecom.com

SUB-CONSULTANTS
 分判工程顧問公司

ISSUE/REVISION
 修訂

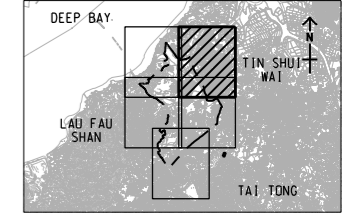
NO.	DATE	DESCRIPTION	CHK.

STATUS
 狀態

SCALE
 比例
 A3 1 : 8000

DIMENSION UNIT
 尺寸單位
 METRES

KEY PLAN
 索引圖
 A3 1 : 300000



PROJECT NO.
 項目編號
 60222570

AGREEMENT NO.
 協議編號
 CE2/2011 (CE)

SHEET TITLE
 圖紙名稱
 CONTOURS OF CUMULATIVE 10th HIGHEST 24-HOUR FSP CONCENTRATION (ug/m³) AT 1.5m ABOVE GROUND (YEAR 2031 - 2039) (OPERATION PHASE)
 SHEET 2 OF 5

SHEET NUMBER
 圖紙編號
 60222570/TR19A/FIGURE 3.18.2

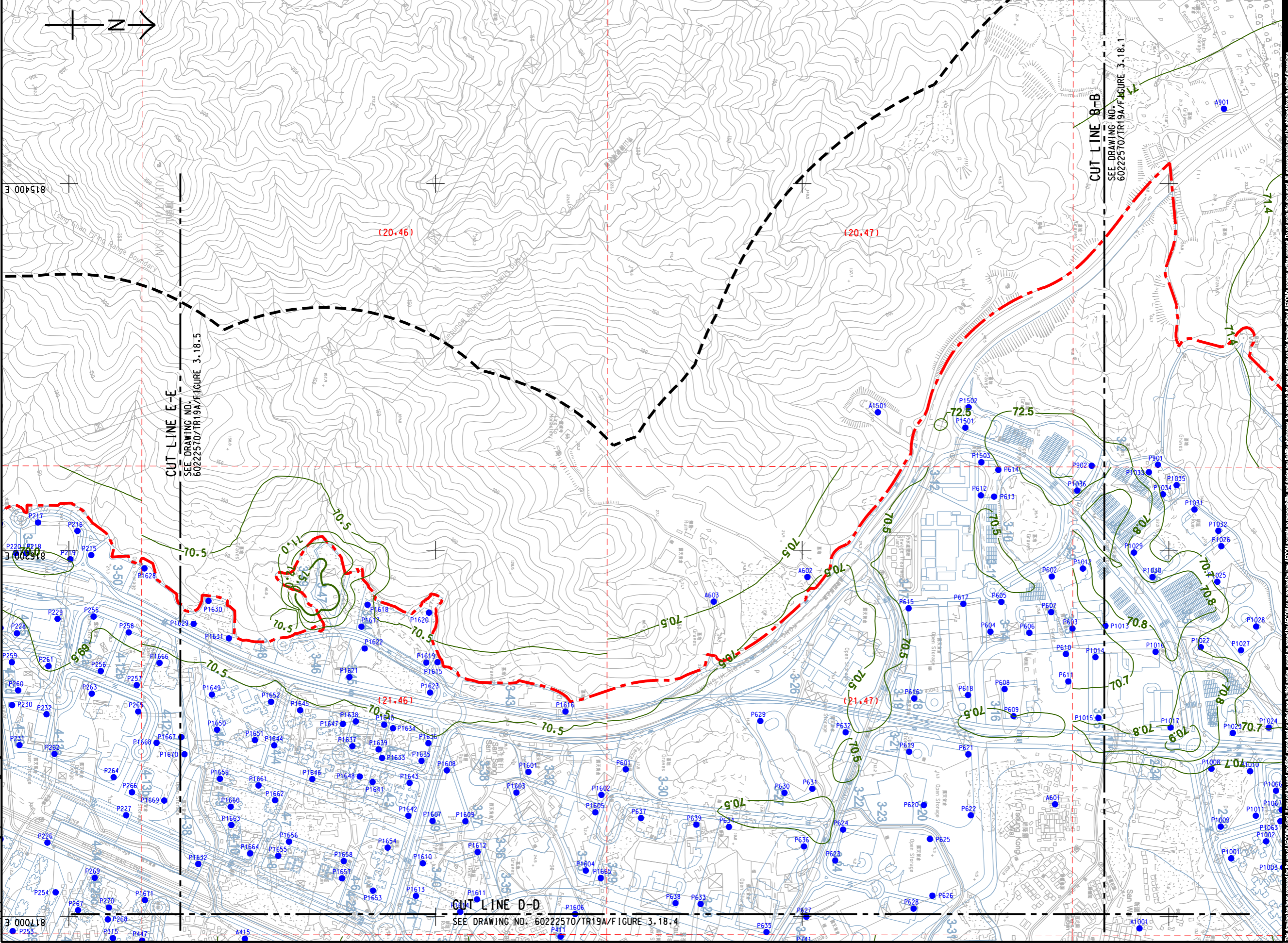
- NOTES:**
- FOR NOTES AND LEGEND REFER TO DRAWING NO. 60222570/TR19A/FIGURE 3.18.1.
 - THIS DRAWING TO BE READ IN CONJUNCTION WITH DRAWING NOS. 60222570/TR19A/FIGURE 3.18.1 TO FIGURE 3.18.5.
 - ASR DURING CONSTRUCTION PHASE: ASR INSIDE COMPLETED DEVELOPMENT. ASR DURING OPERATION PHASE: ALL ASRS.

ISO A1 594mm x 841mm
 Approved:
 Checked:
 Designer:
 Project Management Initials:
 Pld File by: ANH
 PATH: E:\projects\60222570\Drawing\REPORT\TR19A\TR19A_261.dgn

This drawing has been prepared for the use of AECOM's client. It may not be used, modified, reproduced or relied upon by third parties, except as required by law. AECOM accepts no responsibility, and denies any liability whatsoever, for any party that uses or relies on this drawing without AECOM's express written consent. Do not scale this document. All measurements must be obtained from the stated dimensions.

ISO A1 594mm x 841mm
Approved:
Checked:
Designer:
Project Management Initials:
Pld File by: zhaohit
PATH: E:\projects\60222570\drawing\pcenter\6a\TR19A_262.dgn

- NOTES:**
- FOR NOTES AND LEGEND REFER TO DRAWING NO. 60222570/TR19A/FIGURE 3.18.1.
 - THIS DRAWING TO BE READ IN CONJUNCTION WITH DRAWING NOS. 60222570/TR19A/FIGURE 3.18.1 TO FIGURE 3.18.5.
 - ASR DURING CONSTRUCTION PHASE: ASR INSIDE COMPLETED DEVELOPMENT.
ASR DURING OPERATION PHASE: ALL ASRS.



AECOM

PROJECT
項目
HUNG SHUI KIU NEW DEVELOPMENT AREA PLANNING AND ENGINEERING STUDY - INVESTIGATION

CLIENT
業主
CEDD
Civil Engineering and Development Department
規劃署
Planning Department

CONSULTANT
工程顧問公司
AECOM Asia Company Ltd.
www.aecom.com

SUB-CONSULTANTS
分判工程顧問公司

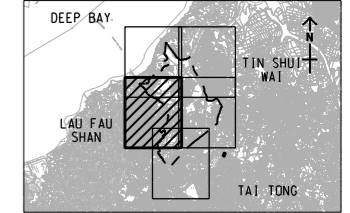
ISSUE/REVISION
修訂

IR/修訂	DATE/日期	DESCRIPTION/內容描述	CHK/核對

STATUS
狀態

SCALE
比例
A3 1 : 8000
KEY PLAN
索引圖
A3 1 : 300000

DIMENSION UNIT
尺寸單位
METRES
公尺



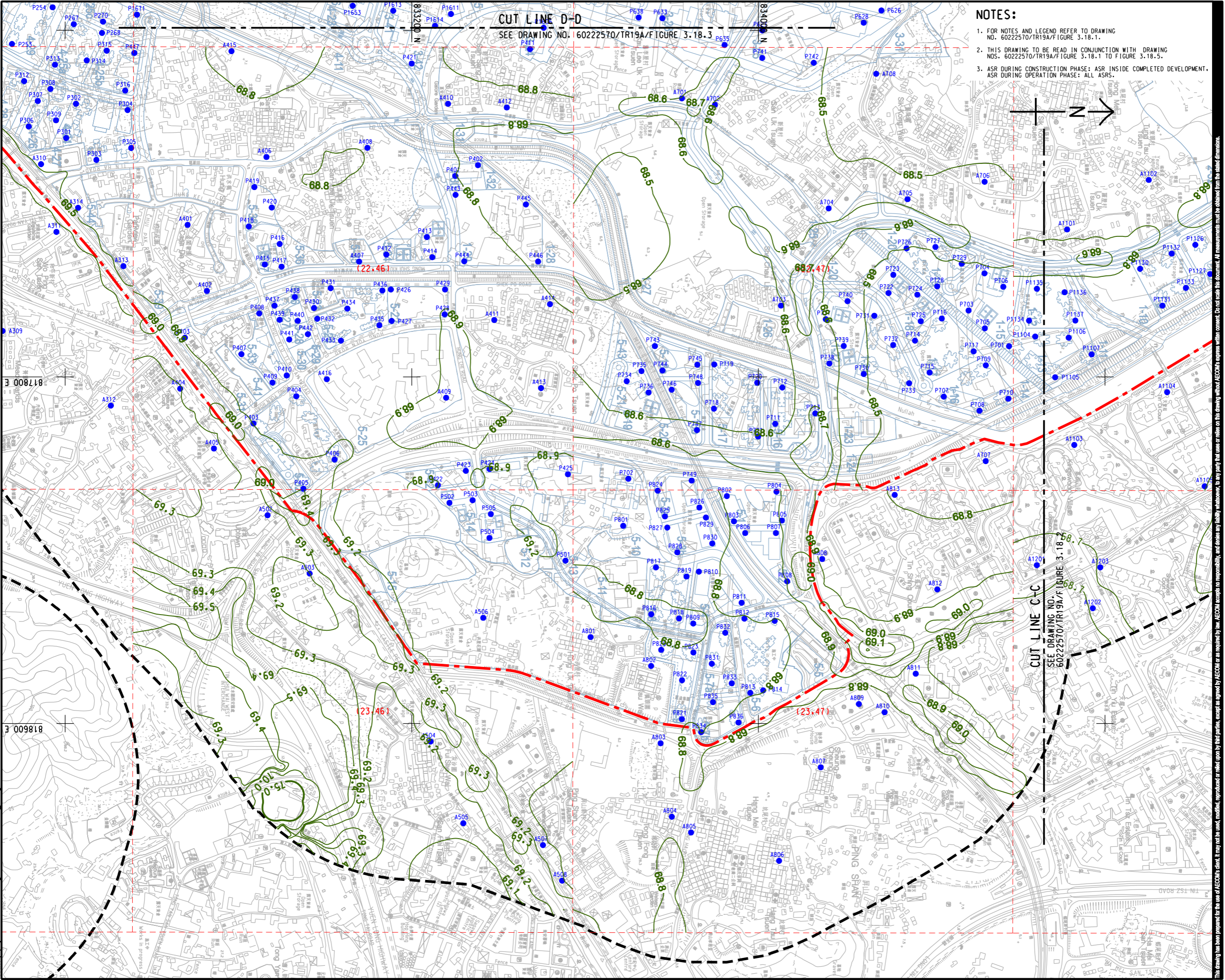
PROJECT NO.
項目編號
60222570

AGREEMENT NO.
協議編號
CE2/2011 (CE)

SHEET TITLE
圖紙名稱
CONTOURS OF CUMULATIVE 10th HIGHEST 24-HOUR FSP CONCENTRATION (ug/m³) AT 1.5m ABOVE GROUND (YEAR 2031 - 2039) (OPERATION PHASE)
SHEET 3 OF 5

SHEET NUMBER
圖紙編號
60222570/TR19A/FIGURE 3.18.3

ISO A1 594mm x 841mm
Approved:
Checked:
Designer:
Project Management Initials:
Pld File by: ANH
PATH: E:\projects\60222570\Drawing\REPORT\TR19A\Figure 3.18.3.dgn



- NOTES:**
- FOR NOTES AND LEGEND REFER TO DRAWING NO. 60222570/TR19A/FIGURE 3.18.1.
 - THIS DRAWING TO BE READ IN CONJUNCTION WITH DRAWING NOS. 60222570/TR19A/FIGURE 3.18.1 TO FIGURE 3.18.5.
 - ASR DURING CONSTRUCTION PHASE: ASR INSIDE COMPLETED DEVELOPMENT, ASR DURING OPERATION PHASE: ALL ASRS.

AECOM

PROJECT
HUNG SHUI KIU NEW DEVELOPMENT AREA PLANNING AND ENGINEERING STUDY - INVESTIGATION

CLIENT
CEDD
土木工程拓展署
Civil Engineering and Development Department

CONSULTANT
AECOM Asia Company Ltd.
www.aecom.com

SUB-CONSULTANTS
分判工程顧問公司

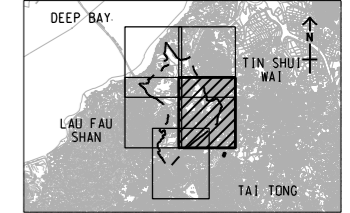
ISSUE/REVISION

IR/	DATE	DESCRIPTION	CHK.

STATUS

SCALE
A3 1 : 8000
A1 1 : 30000

DIMENSION UNIT
METRES



PROJECT NO.
60222570

AGREEMENT NO.
CE2/2011 (CE)

SHEET TITLE
CONTOURS OF CUMULATIVE 10th HIGHEST 24-HOUR FSP CONCENTRATION (ug/m³) AT 1.5m ABOVE GROUND (YEAR 2031 - 2039) (OPERATION PHASE)

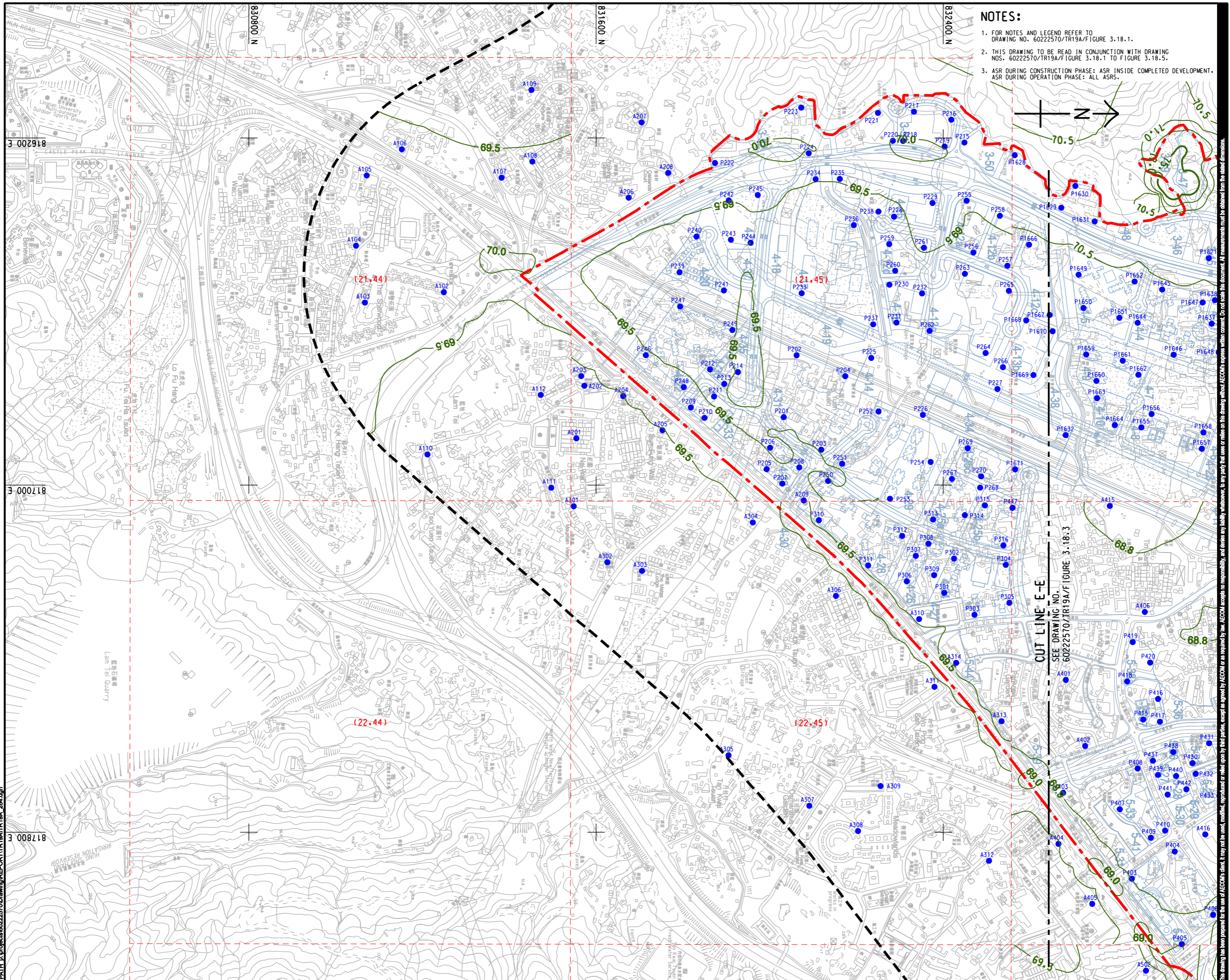
SHEET NUMBER
SHEET 4 OF 5

60222570/TR19A/FIGURE 3.18.4

This drawing has been prepared for the use of AECOM's client. It may not be used, modified, reproduced or relied upon by third parties, except as approved by AECOM or as required by law. AECOM accepts no responsibility, and denies any liability whatsoever, for any party that uses or relies on this drawing without AECOM's express written consent. Do not scale this document. All measurements must be obtained from the related dimensions.

ISO A1 594mm x 841mm
 Approved:
 Checked:
 Designer:
 Project Management Initials:

Pld File by: ANH\j...
 PATH: E:\project\60222570\Drawing\REPORT\TR19A\TR19A_284.dgn



- NOTES:**
- FOR NOTES AND LEGEND REFER TO DRAWING NO. 60222570/TR19A/FIGURE 3.18.1.
 - THIS DRAWING TO BE READ IN CONJUNCTION WITH DRAWING NOS. 60222570/TR19A/FIGURE 3.18.1 TO FIGURE 3.18.5.
 - ASR DURING CONSTRUCTION PHASE: ASR INSIDE COMPLETED DEVELOPMENT. ASR DURING OPERATION PHASE: ALL ASRS.

AECOM

PROJECT
 項目
HUNG SHUI KIU NEW DEVELOPMENT AREA PLANNING AND ENGINEERING STUDY - INVESTIGATION

CLIENT
 業主

 土木工程拓展署
 Civil Engineering and Development Department


 規劃署
 Planning Department

CONSULTANT
 工程顧問公司
 AECOM Asia Company Ltd.
 www.aecom.com

SUB-CONSULTANTS
 分判工程顧問公司

ISSUE/REVISION
 修訂

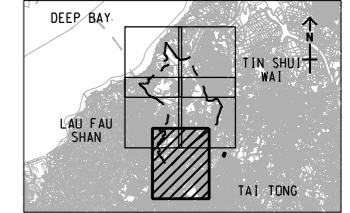
IR	DATE	DESCRIPTION	CHK.

STATUS
 階段

SCALE
 比例
 A3 1 : 8000

DIMENSION UNIT
 尺寸單位
 METRES

KEY PLAN
 索引圖
 A3 1 : 300000



PROJECT NO.
 項目編號
 60222570

AGREEMENT NO.
 協議編號
 CE2/2011 (CE)

SHEET TITLE
 圖紙名稱
 CONTOURS OF CUMULATIVE 10th HIGHEST 24-HOUR FSP CONCENTRATION (ug/m³) AT 1.5m ABOVE GROUND (YEAR 2031 - 2039) (OPERATION PHASE)

SHEET NUMBER
 圖紙編號
 SHEET 5 OF 5

SHEET NUMBER
 圖紙編號
 60222570/TR19A/FIGURE 3.18.5

This drawing has been prepared for the use of AECOM's client. It may not be used, modified, reproduced or relied upon by third parties, except as approved by AECOM or as required by law. AECOM accepts no responsibility, and denies any liability whatsoever, to any party, for losses or claims on this drawing without AECOM's express written consent. Do not trade this document. All measurements must be obtained from the stated dimensions.