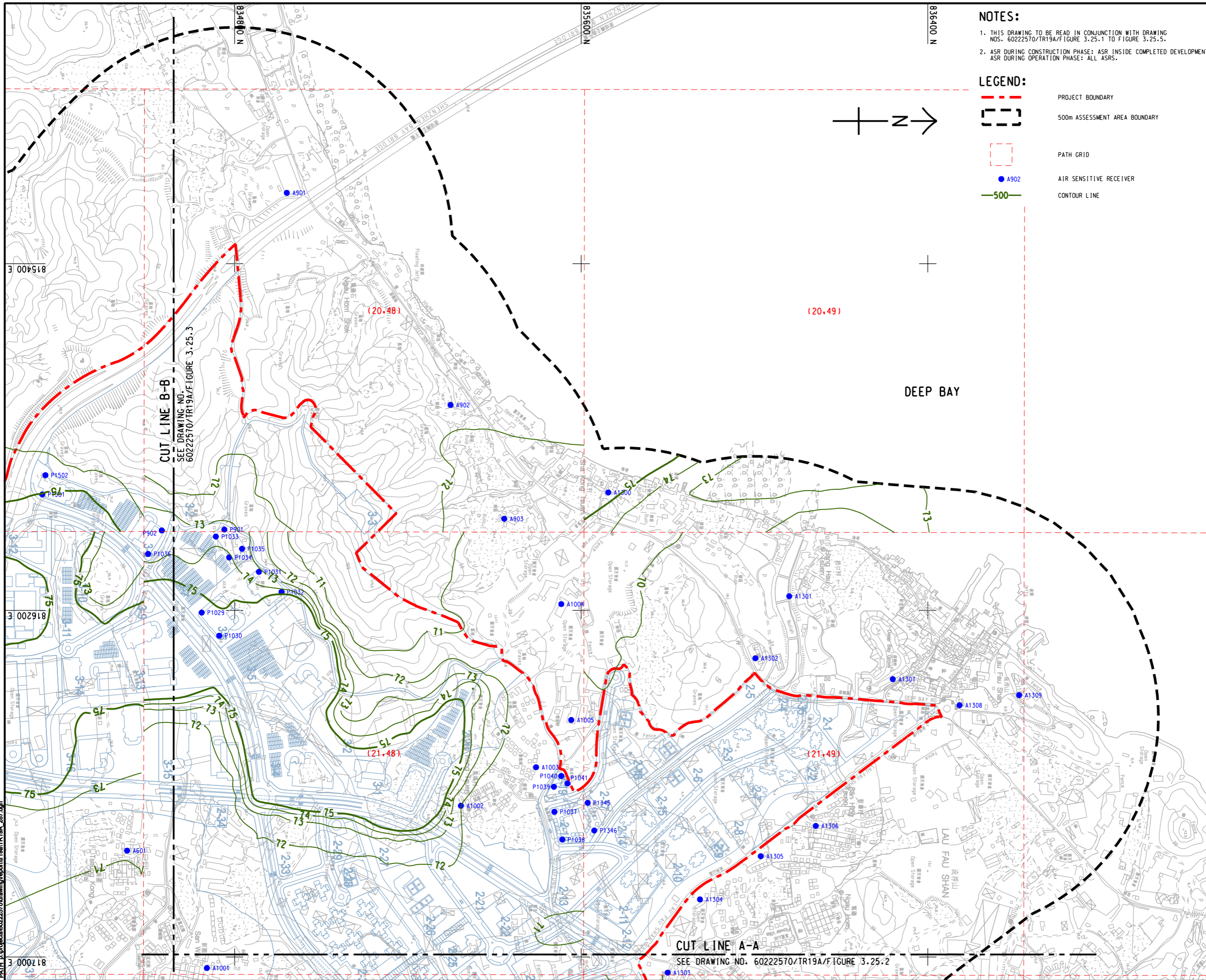


ISO A1 594mm x 841mm
 Approved:
 Checked:
 Designer:
 Project Management Initials:
 Pld File by: ZHOUJMH
 PATH: E:\projects\60222570\drawing\center\0a1\TR19A_287.dgn
 18 7000 E

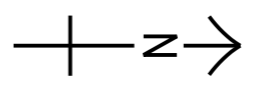


NOTES:

1. THIS DRAWING TO BE READ IN CONJUNCTION WITH DRAWING NOS. 60222570/TR19A/FIGURE 3.25.1 TO FIGURE 3.25.5.
2. ASR DURING CONSTRUCTION PHASE: ASR INSIDE COMPLETED DEVELOPMENT.
ASR DURING OPERATION PHASE: ALL ASRS.

LEGEND:

- - - PROJECT BOUNDARY
- 500m ASSESSMENT AREA BOUNDARY
- PATH GRID
- A902 AIR SENSITIVE RECEIVER
- 500 CONTOUR LINE



PROJECT
HUNG SHUI KIU NEW DEVELOPMENT AREA PLANNING AND ENGINEERING STUDY - INVESTIGATION

CLIENT
 業主

 土木工程拓展署 規劃署
 Civil Engineering and Development Department Planning Department

CONSULTANT
 工程顧問公司
 AECOM Asia Company Ltd.
 www.aecom.com

SUB-CONSULTANTS
 分判工程顧問公司

ISSUE/REVISION
 修訂

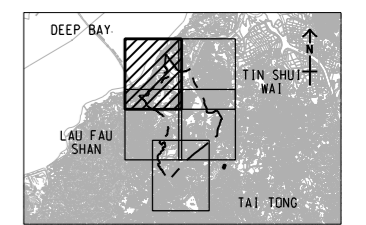
NO.	DATE	DESCRIPTION	CHK.

STATUS
 階段

SCALE
 比例
 A3 1 : 8000

DIMENSION UNIT
 尺寸單位
 METRES

KEY PLAN A3 1 : 300000
 索引圖



PROJECT NO.
 項目編號
 60222570

AGREEMENT NO.
 協議編號
 CE2/2011 (CE)

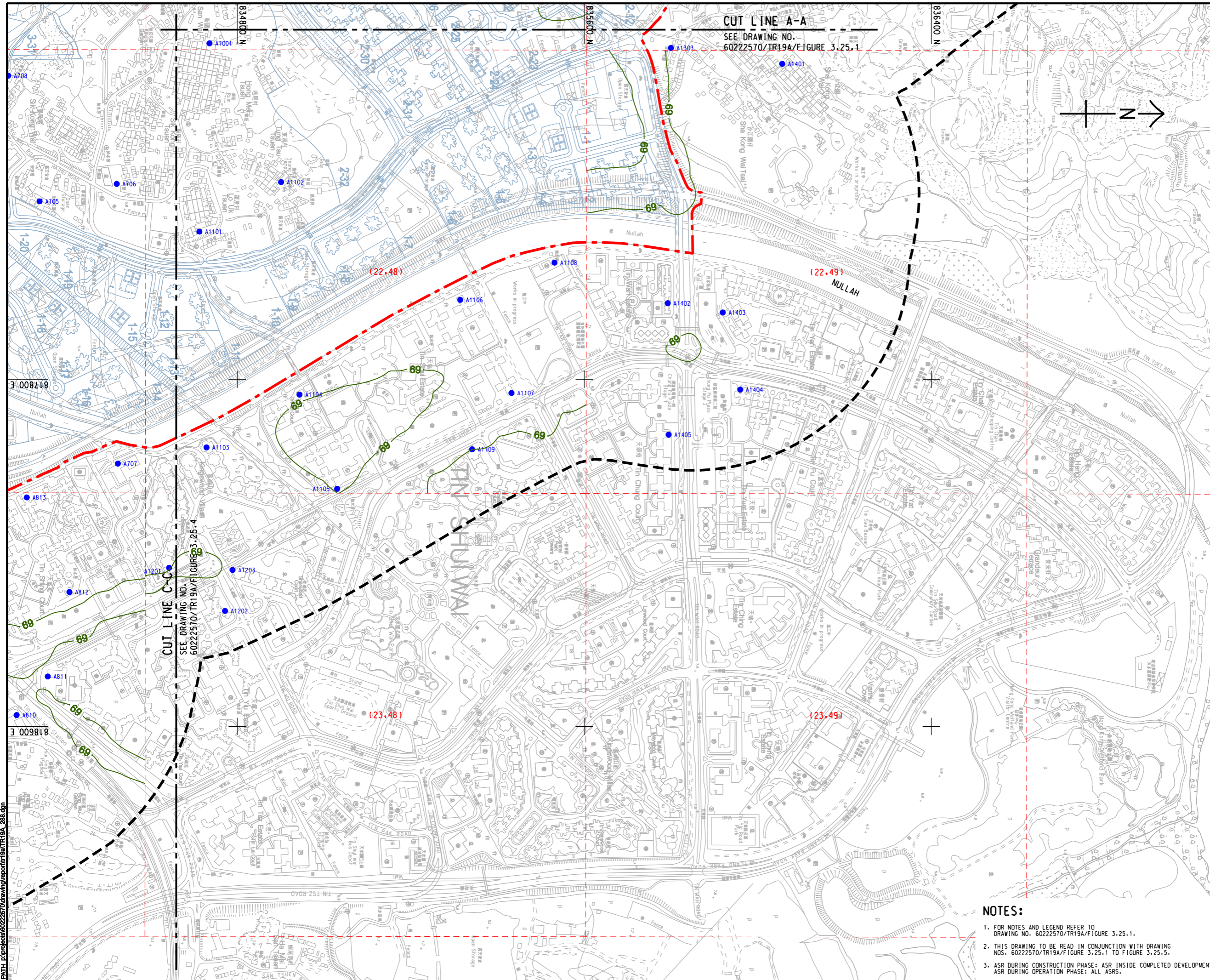
SHEET TITLE
 圖紙名稱
 CONTOURS OF CUMULATIVE 10th HIGHEST 24-HOUR FSP CONCENTRATION (ug/m³) AT 1.5m ABOVE GROUND (YEAR 2019 - 2030) (TIER 1)

SHEET 1 OF 5

SHEET NUMBER
 圖紙編號
 60222570/TR19A/FIGURE 3.25.1

This drawing has been prepared for the use of AECOM's client. It may not be used, modified, reproduced or relied upon by third parties, except as approved by AECOM or as required by law. AECOM accepts no responsibility, and denies any liability whatsoever, for any party that uses or relies on this drawing without AECOM's express written consent. Do not scale this document. All measurements must be obtained from the stated dimensions.

Pld File by: ZHOUNH
 PATH: E:\projects\60222570\drawing\center\6a\TR19A_288.dgn
 ISO A1 594mm x 841mm
 Approved:
 Checked:
 Designer:
 Project Management Initials:



AECOM

PROJECT
 HUNG SHUI KIU NEW
 DEVELOPMENT AREA
 PLANNING AND
 ENGINEERING STUDY
 - INVESTIGATION

CLIENT
 CEDD
 土木工程拓展署
 Civil Engineering and
 Development Department
 規劃署
 Planning
 Department

CONSULTANT
 AECOM Asia Company Ltd.
 www.aecom.com

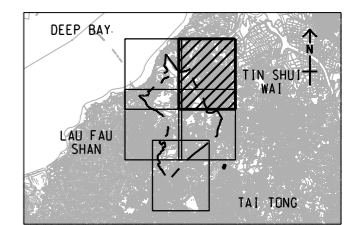
SUB-CONSULTANTS
 分列工程顧問公司

ISSUE/REVISION
 修訂

IR	DATE	DESCRIPTION	CHK.

STATUS
 圖版

SCALE
 比例
 A3 1 : 8000
DIMENSION UNIT
 尺寸單位
 METRES
KEY PLAN
 索引圖
 A3 1 : 300000



PROJECT NO.
 項目編號
 60222570
AGREEMENT NO.
 協議編號
 CE2/2011 (CE)

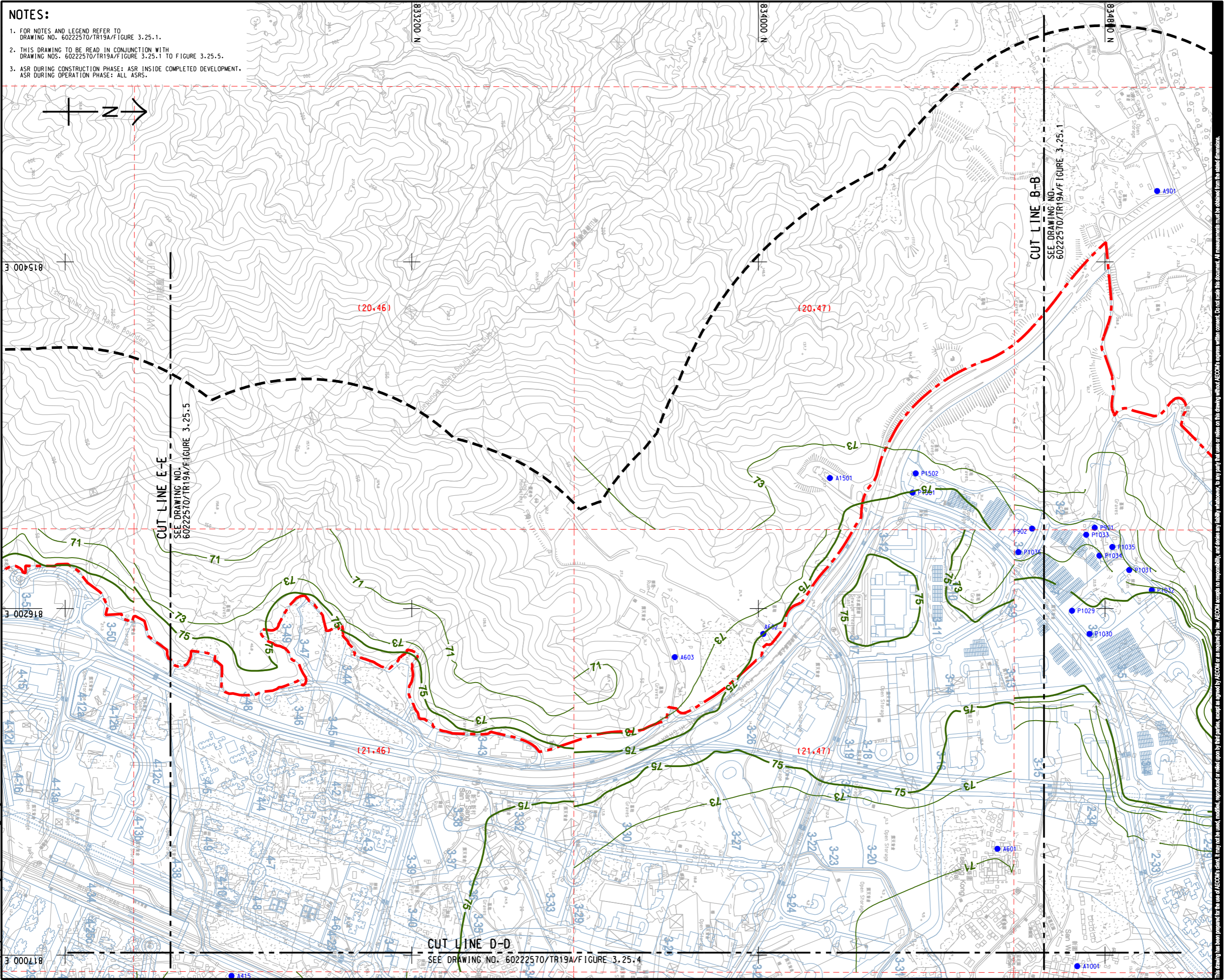
SHEET TITLE
 圖紙名稱
 CONTOURS OF CUMULATIVE 10th HIGHEST
 24-HOUR FSP CONCENTRATION (ug/m³)
 AT 1.5m ABOVE GROUND
 (YEAR 2019 - 2030) (TIER 1)
 SHEET 2 OF 5

SHEET NUMBER
 圖紙編號
 60222570/TR19A/FIGURE 3.25.2

- NOTES:**
- FOR NOTES AND LEGEND REFER TO DRAWING NO. 60222570/TR19A/FIGURE 3.25.1.
 - THIS DRAWING TO BE READ IN CONJUNCTION WITH DRAWING NOS. 60222570/TR19A/FIGURE 3.25.1 TO FIGURE 3.25.5.
 - ASR DURING CONSTRUCTION PHASE: ASR INSIDE COMPLETED DEVELOPMENT, ASR DURING OPERATION PHASE: ALL ASRS.

This drawing has been prepared for the use of AECOM's client. It may not be used, modified, reproduced or relied upon by third parties, except as required by law. AECOM accepts no responsibility, and does not warrant, for any party that uses or relies on this drawing without AECOM's express written consent. Do not scale this document. All measurements must be obtained from the related dimensions.

ISO A1 594mm x 841mm
 Approved:
 Checked:
 Designer:
 Project Management Initials:
 Pld File by: ZHOUJMH
 PATH: E:\projects\60222570\drawing\paper\en\TR19A_289.dgn



NOTES:

- FOR NOTES AND LEGEND REFER TO DRAWING NO. 60222570/TR19A/FIGURE 3.25.1.
- THIS DRAWING TO BE READ IN CONJUNCTION WITH DRAWING NOS. 60222570/TR19A/FIGURE 3.25.1 TO FIGURE 3.25.5.
- ASR DURING CONSTRUCTION PHASE: ASR INSIDE COMPLETED DEVELOPMENT.
ASR DURING OPERATION PHASE: ALL ASRS.

AECOM

PROJECT
 HUNG SHUI KIU NEW DEVELOPMENT AREA PLANNING AND ENGINEERING STUDY - INVESTIGATION

CLIENT
 CEDD
 土木工程拓展署
 Civil Engineering and Development Department

CONSULTANT
 AECOM Asia Company Ltd.
 www.aecom.com

SUB-CONSULTANTS
 分判工程顧問公司

ISSUE/REVISION

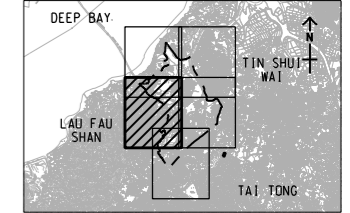
NO.	DATE	DESCRIPTION	CHK.

STATUS
 核准

SCALE
 比例: A3 1:8000

DIMENSION UNIT
 尺寸單位: METRES

KEY PLAN
 索引圖: A3 1:300000



PROJECT NO.
 項目編號: 60222570

AGREEMENT NO.
 協議編號: CE2/2011 (CE)

SHEET TITLE
 圖紙名稱: CONTOURS OF CUMULATIVE 10th HIGHEST 24-HOUR FSP CONCENTRATION (ug/m³) AT 1.5m ABOVE GROUND (YEAR 2019 - 2030) (TIER 1)

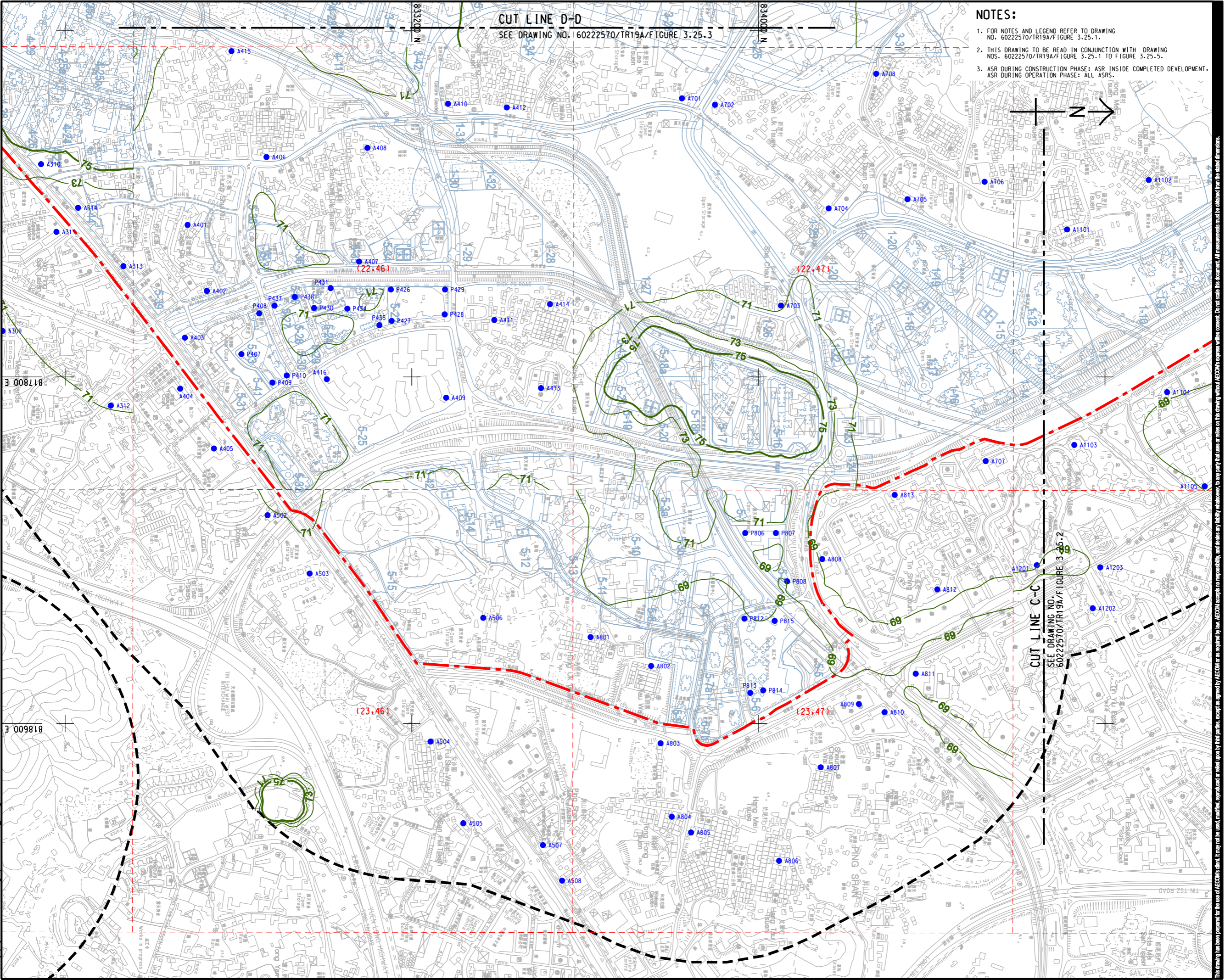
SHEET NUMBER
 圖紙編號: 60222570/TR19A/FIGURE 3.25.3

SHEET 3 OF 5

ISO A1 594mm x 841mm
Approved:
Checked:
Designer:
Project Management Initials:
Pld File by: ZHOUJMH
PATH: E:\projects\60222570\drawing\center\0a1tr19a_290.dgn

CUT LINE D-D
SEE DRAWING NO. 60222570/TR19A/FIGURE 3.25.3

- NOTES:**
- FOR NOTES AND LEGEND REFER TO DRAWING NO. 60222570/TR19A/FIGURE 3.25.1.
 - THIS DRAWING TO BE READ IN CONJUNCTION WITH DRAWING NOS. 60222570/TR19A/FIGURE 3.25.1 TO FIGURE 3.25.5.
 - ASR DURING CONSTRUCTION PHASE: ASR INSIDE COMPLETED DEVELOPMENT. ASR DURING OPERATION PHASE: ALL ASRS.



AECOM

PROJECT
HUNG SHUI KIU NEW DEVELOPMENT AREA PLANNING AND ENGINEERING STUDY - INVESTIGATION

CLIENT
CEDD
土木工務拓展署
Civil Engineering and Development Department
規劃署
Planning Department

CONSULTANT
AECOM Asia Company Ltd.
www.aecom.com

SUB-CONSULTANTS
分判工程顧問公司

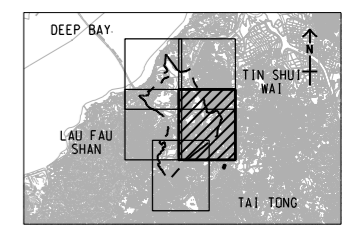
ISSUE/REVISION
訂

IR	DATE	DESCRIPTION	CHK

STATUS
現狀

SCALE
A3 1 : 8000
A4 1 : 30000

DIMENSION UNIT
METRES



PROJECT NO.
60222570

AGREEMENT NO.
CE2/2011 (CE)

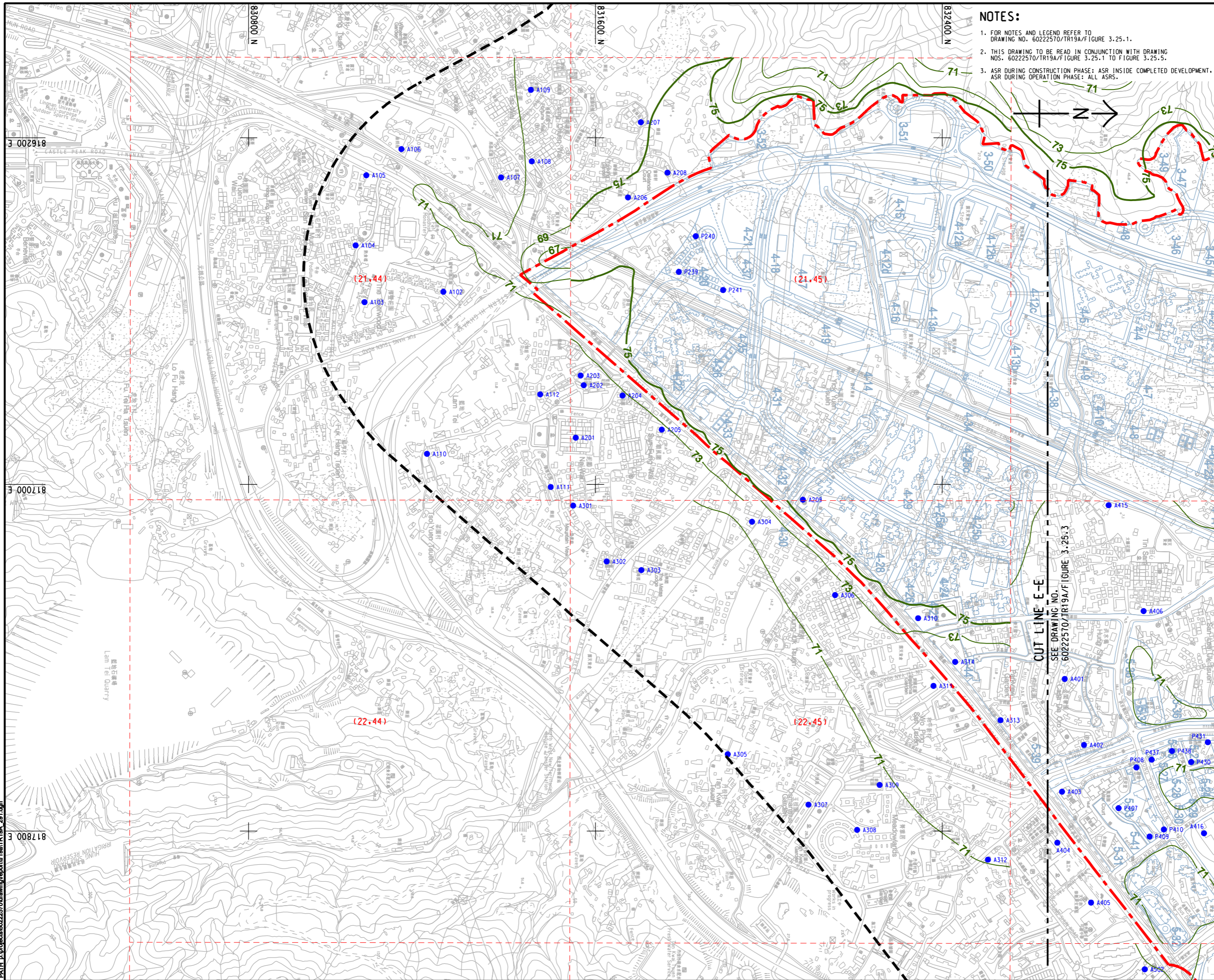
SHEET TITLE
CONTOURS OF CUMULATIVE 10th HIGHEST 24-HOUR FSP CONCENTRATION (ug/m³) AT 1.5m ABOVE GROUND (YEAR 2019 - 2030) (TIER 1)

SHEET 4 OF 5

SHEET NUMBER
60222570/TR19A/FIGURE 3.25.4

This drawing has been prepared for the use of AECOM's client. It may not be used, modified, reproduced or relied upon by third parties, except as agreed by AECOM or as required by law. AECOM accepts no responsibility, and denies any liability whatsoever, for any party that uses or relies on this drawing without AECOM's express written consent. Do not erase this document. All measurements must be obtained from the related dimensions.

ISO A1 594mm x 841mm
 Approved:
 Checked:
 Designer:
 Project Management Initials:
 Pld File by: ZHOUJMH
 PATH: E:\projects\60222570\drawing\center\GnTR19A_291.dgn



- NOTES:**
- FOR NOTES AND LEGEND REFER TO DRAWING NO. 60222570/TR19A/FIGURE 3.25.1.
 - THIS DRAWING TO BE READ IN CONJUNCTION WITH DRAWING NOS. 60222570/TR19A/FIGURE 3.25.1 TO FIGURE 3.25.5.
 - ASR DURING CONSTRUCTION PHASE: ASR INSIDE COMPLETED DEVELOPMENT. ASR DURING OPERATION PHASE: ALL ASRS.

AECOM

PROJECT
 HUNG SHUI KIU NEW DEVELOPMENT AREA PLANNING AND ENGINEERING STUDY - INVESTIGATION

CLIENT
 土庫工程拓展署
 Civil Engineering and Development Department

CONSULTANT
 AECOM Asia Company Ltd.
 www.aecom.com

SUB-CONSULTANTS
 分判工程顧問公司

CEDD
 土庫工程拓展署
 Civil Engineering and Development Department

Planning Department

ISSUE/REVISION

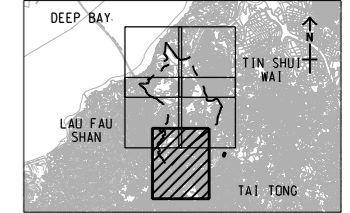
NO.	DATE	DESCRIPTION	CHK.

STATUS
 擬定

SCALE
 比例
 A3 1 : 8000

DIMENSION UNIT
 尺寸單位
 METRES

KEY PLAN
 索引圖
 A3 1 : 300000



PROJECT NO.
 項目編號
 60222570

AGREEMENT NO.
 協議編號
 CE2/2011 (CE)

SHEET TITLE
 圖紙名稱
 CONTOURS OF CUMULATIVE 10th HIGHEST 24-HOUR FSP CONCENTRATION (ug/m³) AT 1.5m ABOVE GROUND (YEAR 2019 - 2030) (TIER 1)

SHEET NUMBER
 圖紙編號
 60222570/TR19A/FIGURE 3.25.5

SHEET 5 OF 5

This drawing has been prepared for the use of AECOM's client. It may not be used, modified, reproduced or relied upon by third parties, except as required by law. AECOM accepts no responsibility, and denies any liability whatsoever, to any party, for losses or claims on this drawing without AECOM's express written consent. Do not scale this drawing. All measurements must be obtained from the stated dimensions.