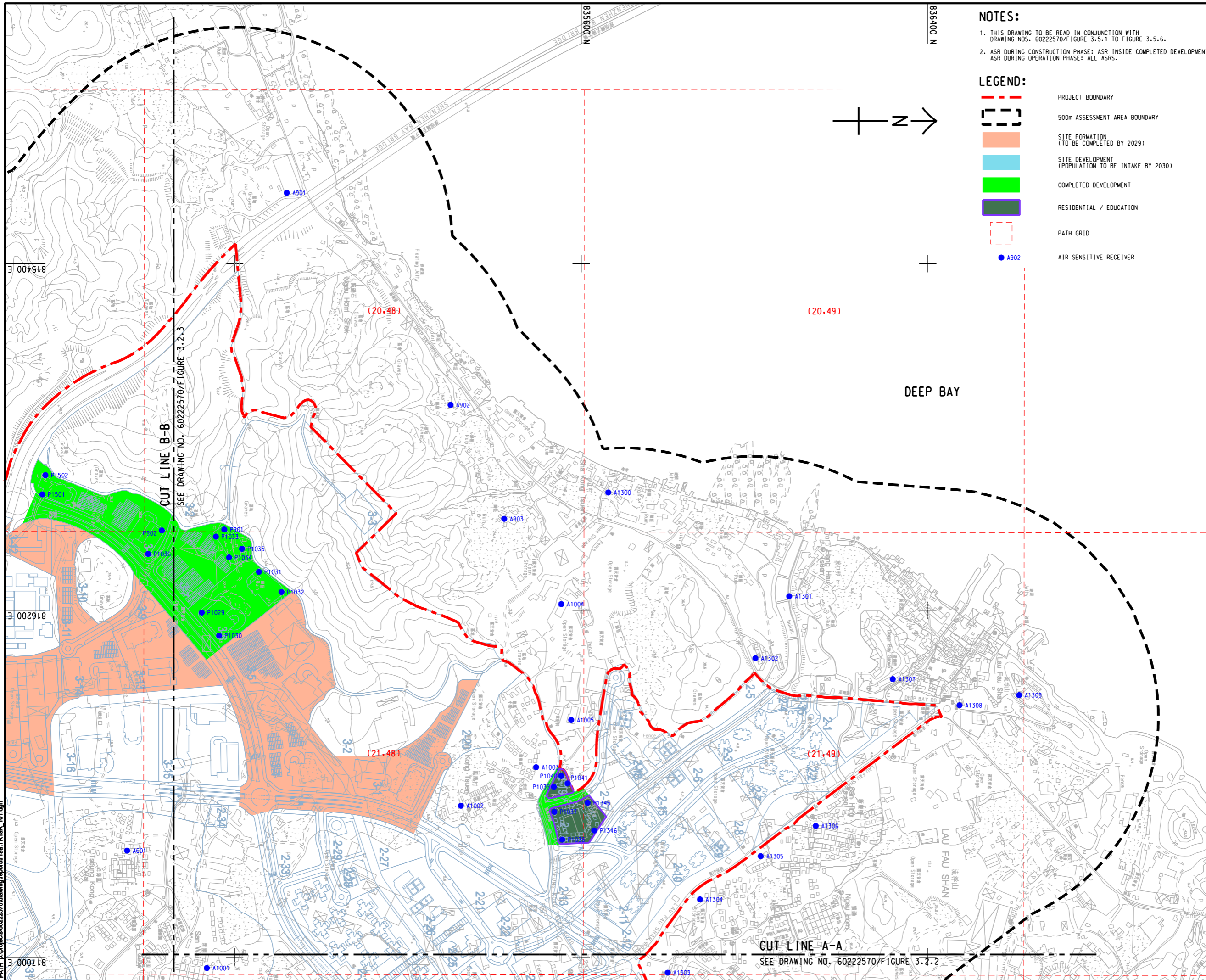


ISO A1 594mm x 841mm  
Approved:  
Checked:  
Designer:  
Project Management Initials:  
Pld File by: HUANGXW  
PATH: E:\projects\60222570\drawing\center\Gaitr\19A\_101.dgn

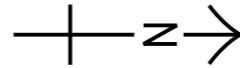


**NOTES:**

1. THIS DRAWING TO BE READ IN CONJUNCTION WITH DRAWING NOS. 60222570/FIGURE 3.5.1 TO FIGURE 3.5.6.
2. ASR DURING CONSTRUCTION PHASE: ASR INSIDE COMPLETED DEVELOPMENT. ASR DURING OPERATION PHASE: ALL ASRS.

**LEGEND:**

- PROJECT BOUNDARY
- 500m ASSESSMENT AREA BOUNDARY
- SITE FORMATION (TO BE COMPLETED BY 2029)
- SITE DEVELOPMENT (POPULATION TO BE INTAKE BY 2030)
- COMPLETED DEVELOPMENT
- RESIDENTIAL / EDUCATION
- PATH GRID
- AIR SENSITIVE RECEIVER



CUT LINE B-B  
SEE DRAWING NO. 60222570/FIGURE 3.2.3

CUT LINE A-A  
SEE DRAWING NO. 60222570/FIGURE 3.2.2



**PROJECT**  
**HUNG SHUI KIU NEW DEVELOPMENT AREA PLANNING AND ENGINEERING STUDY - INVESTIGATION**

**CLIENT**  
  
 土木工程拓展署 規劃署  
 Civil Engineering and Development Department Planning Department

**CONSULTANT**  
 工程顧問公司  
 AECOM Asia Company Ltd.  
 www.aecom.com

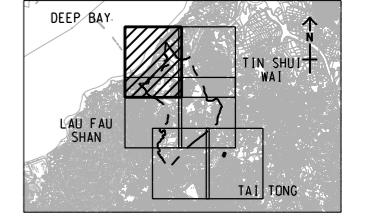
**SUB-CONSULTANTS**  
 分判工程顧問公司

**ISSUE/REVISION**  
 修訂

NO.	DATE	DESCRIPTION	CHK.

**STATUS**  
 階段

**SCALE**  
 比例  
 A3 1 : 8000  
**KEY PLAN** A3 1 : 300000  
 索引圖



**PROJECT NO.**  
 項目編號  
 60222570  
**AGREEMENT NO.**  
 協議編號  
 CE2/2011 (CE)

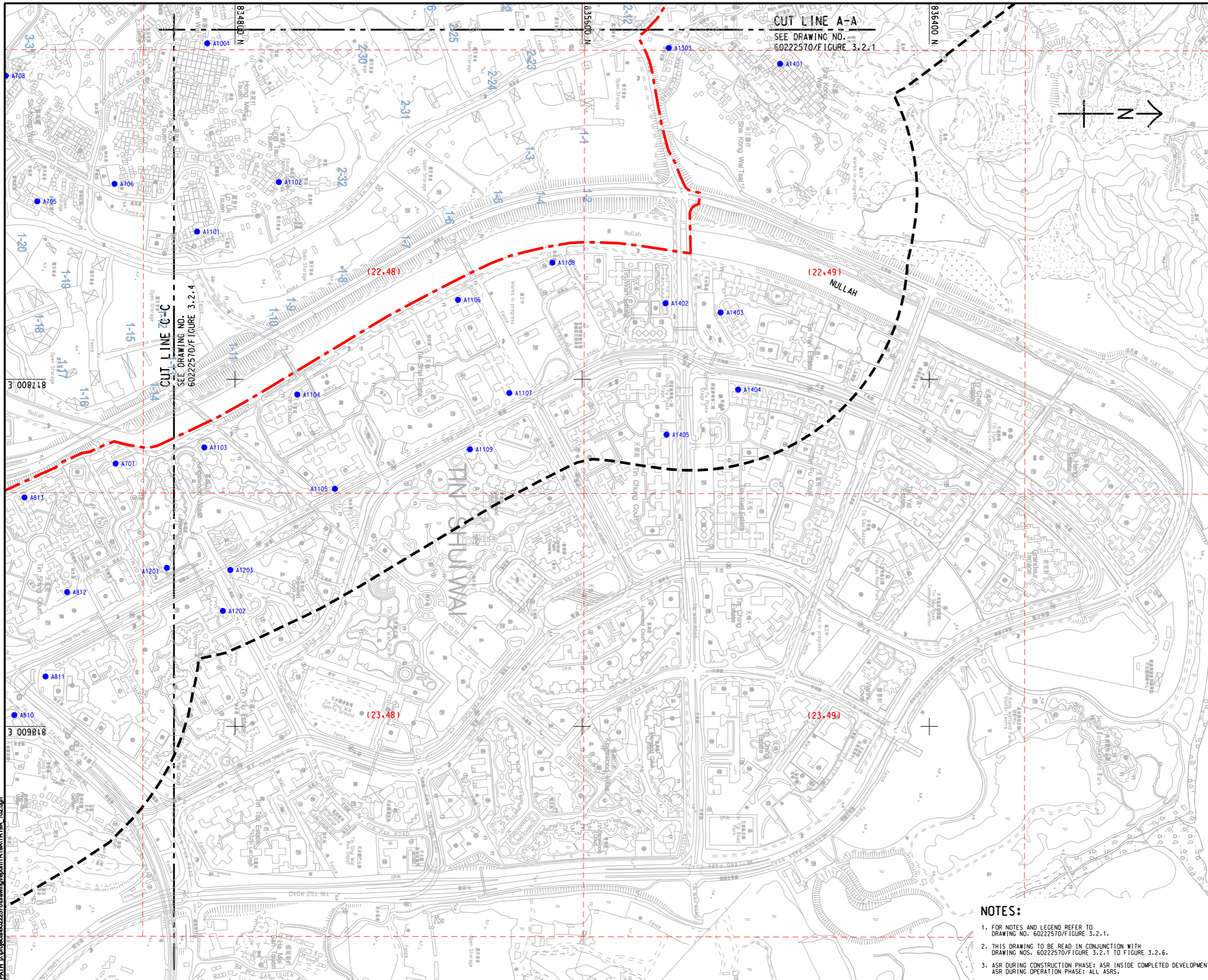
**SHEET TITLE**  
 圖紙名稱  
 LOCATION OF REPRESENTATIVE AIR SENSITIVE RECEIVER (YEAR 2019 - 2030)  
 SHEET 1 OF 6

**SHEET NUMBER**  
 圖紙編號  
 60222570/TR19A/FIGURE 3.2.1

This drawing has been prepared for the use of AECOM's client. It may not be used, modified, reproduced or relied upon by third parties, except as approved by AECOM or as required by law. AECOM accepts no responsibility, and denies any liability whatsoever, for any party that uses or relies on this drawing without AECOM's express written consent. Do not scale this document. All measurements must be obtained from the stated dimensions.





ISO A1 594mm x 841mm  
 Approved:  
 Checked:  
 Designer:  
 Project Management Initials:  
 Pld File by: HUANGXW  
 PATH: E:\projects\60222570\drawing\tr19a\tr19a\_102.dgn



**AECOM**

**PROJECT**  
**HUNG SHUI KIU NEW DEVELOPMENT AREA PLANNING AND ENGINEERING STUDY - INVESTIGATION**

**CLIENT**  
   
 土木工程拓展署 規劃署  
 Civil Engineering and Development Department Planning Department

**CONSULTANT**  
 工程顧問公司  
 AECOM Asia Company Ltd.  
 www.aecom.com

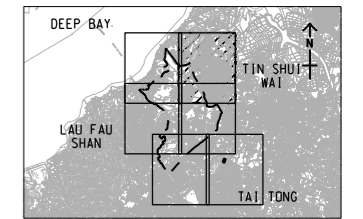
**SUB-CONSULTANTS**  
 分判工程顧問公司

**ISSUE/REVISION**  
 修訂

NO.	DATE	DESCRIPTION	CHK.

**STATUS**  
 圖版

**SCALE**  
 比例  
 A3 1 : 8000  
**DIMENSION UNIT**  
 尺寸單位  
 METRES



**PROJECT NO.**  
 項目編號  
 60222570  
**AGREEMENT NO.**  
 協議編號  
 CE2/2011 (CE)

**SHEET TITLE**  
 圖紙名稱  
**LOCATION OF REPRESENTATIVE AIR SENSITIVE RECEIVER (YEAR 2019 - 2030)**  
 SHEET 2 OF 6

**SHEET NUMBER**  
 圖紙編號  
 60222570/TR19A/FIGURE 3.2.2

- NOTES:**
- FOR NOTES AND LEGEND REFER TO DRAWING NO. 60222570/FIGURE 3.2.1.
  - THIS DRAWING TO BE READ IN CONJUNCTION WITH DRAWING NOS. 60222570/FIGURE 3.2.1 TO FIGURE 3.2.6.
  - ASR DURING CONSTRUCTION PHASE: ASR INSIDE COMPLETED DEVELOPMENT, ASR DURING OPERATION PHASE: ALL ASRS.

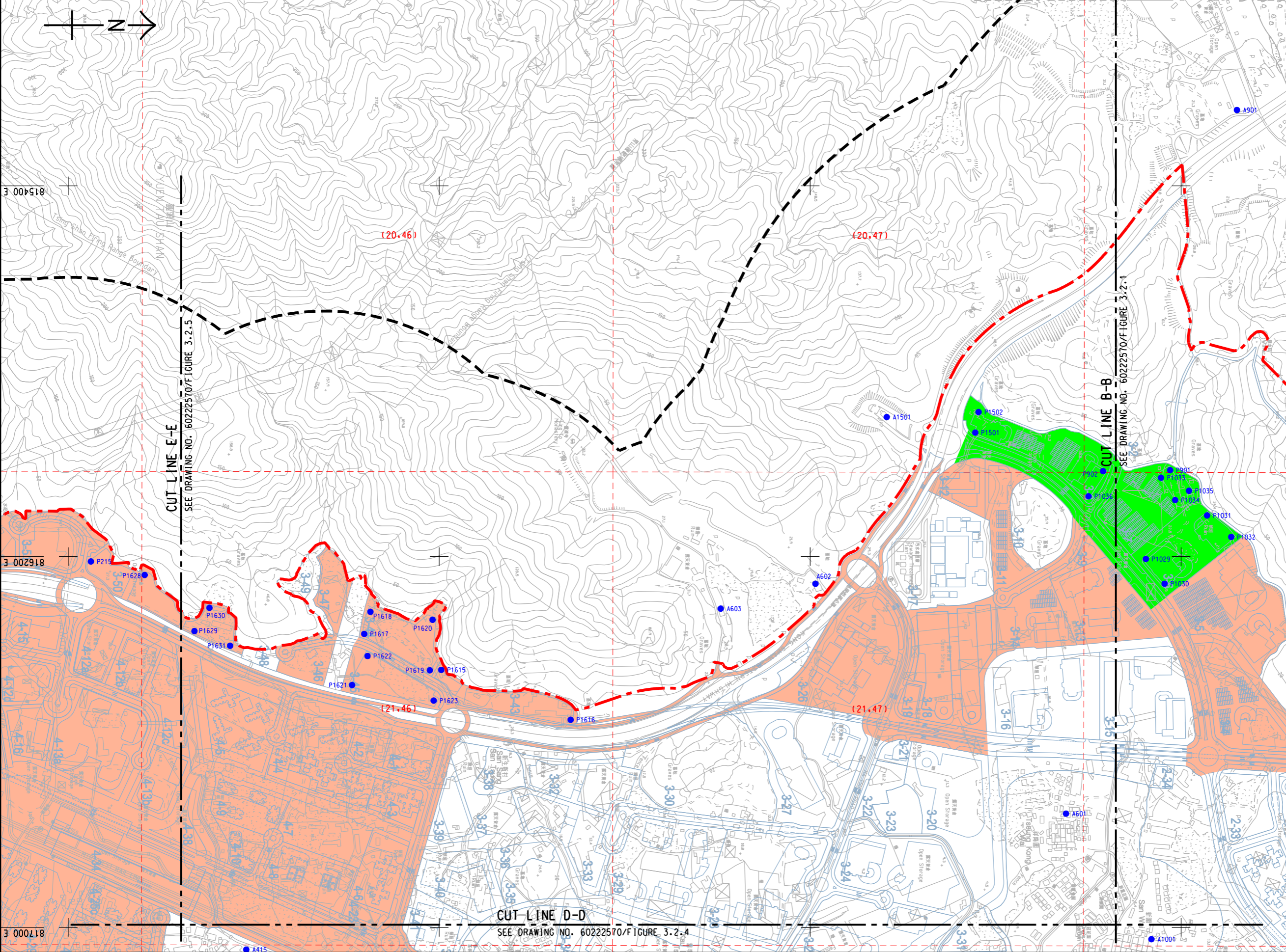
This drawing has been prepared for the use of AECOM's client. It may not be used, modified, reproduced or relied upon by third parties, except as required by law. AECOM accepts no responsibility, and denies any liability whatsoever, for any party that uses or relies on this drawing without AECOM's express written consent. Do not scale this document. All measurements must be obtained from the related dimensions.



ISO A1 594mm x 841mm  
 Approved:  
 Checked:  
 Designer:  
 Project Management Initials:  
 Pld File by: HUANGXW  
 PATH: P:\PROJECTS\60222570\DRAWING\REPORT\TR19A\TR19A\_103.dgn

**NOTES:**

- FOR NOTES AND LEGEND REFER TO DRAWING NO. 60222570/FIGURE 3.2.1.
- THIS DRAWING TO BE READ IN CONJUNCTION WITH DRAWING NOS. 60222570/FIGURE 3.2.1 TO FIGURE 3.2.6.
- ASR DURING CONSTRUCTION PHASE: ASR INSIDE COMPLETED DEVELOPMENT.  
 ASR DURING OPERATION PHASE: ALL ASRS.



**PROJECT**  
 HUNG SHUI KIU NEW DEVELOPMENT AREA PLANNING AND ENGINEERING STUDY - INVESTIGATION

**CLIENT**  
 CEDD  
 土木工程拓展署  
 Civil Engineering and Development Department  
 規劃署  
 Planning Department

**CONSULTANT**  
 AECOM Asia Company Ltd.  
 www.aecom.com

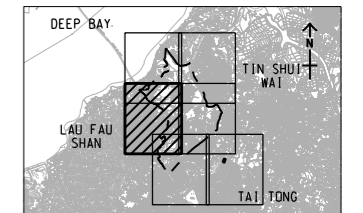
**SUB-CONSULTANTS**  
 分判工程顧問公司

**ISSUE/REVISION**

NO.	DATE	DESCRIPTION	CHK.

**STATUS**  
 核准

**SCALE**  
 A3 1 : 8000  
**KEY PLAN** A3 1 : 300000



**PROJECT NO.** 60222570  
**AGREEMENT NO.** CE2/2011 (CE)

**SHEET TITLE**  
 LOCATION OF REPRESENTATIVE AIR SENSITIVE RECEIVER (YEAR 2019 - 2030)

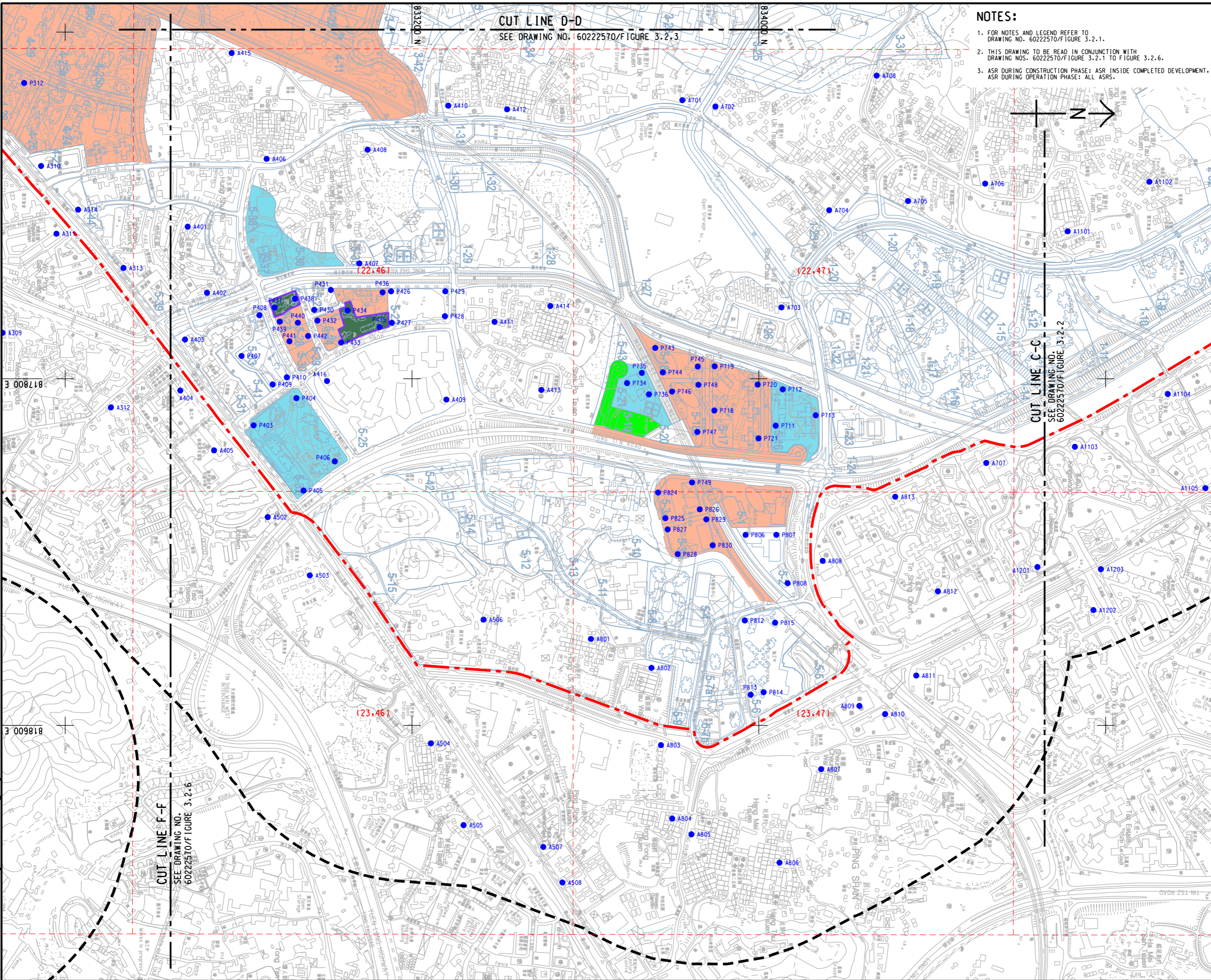
**SHEET NUMBER**  
 60222570/TR19A/FIGURE 3.2.3



CUT LINE D-D  
SEE DRAWING NO. 60222570/FIGURE 3.2.3

NOTES:

1. FOR NOTES AND LEGEND REFER TO DRAWING NO. 60222570/FIGURE 3.2.1.
2. THIS DRAWING TO BE READ IN CONJUNCTION WITH DRAWING NOS. 60222570/FIGURE 3.2.1 TO FIGURE 3.2.6.
3. ASR DURING CONSTRUCTION PHASE: ASR INSIDE COMPLETED DEVELOPMENT, ASR DURING OPERATION PHASE: ALL ASRS.



**PROJECT**  
**HUNG SHUI KIU NEW DEVELOPMENT AREA PLANNING AND ENGINEERING STUDY - INVESTIGATION**

**CLIENT**  
 CEDD  
 土木工程拓展署  
 Civil Engineering and Development Department  
 規劃署  
 Planning Department

**CONSULTANT**  
 工務顧問公司  
 AECOM Asia Company Ltd.  
 www.aecom.com

**SUB-CONSULTANTS**  
 分判工程顧問公司

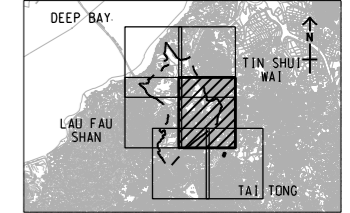
**ISSUE/REVISION**

IR/	DATE	DESCRIPTION	CHK.
NO.	DATE	DESCRIPTION	CHK.

**STATUS**

**SCALE**  
 比例  
 A3 1 : 8000  
**DIMENSION UNIT**  
 尺寸單位  
 METRES

**KEY PLAN**  
 索引圖  
 A3 1 : 300000



**PROJECT NO.**  
 項目編號  
 60222570  
**AGREEMENT NO.**  
 協議編號  
 CE2/2011 (CE)

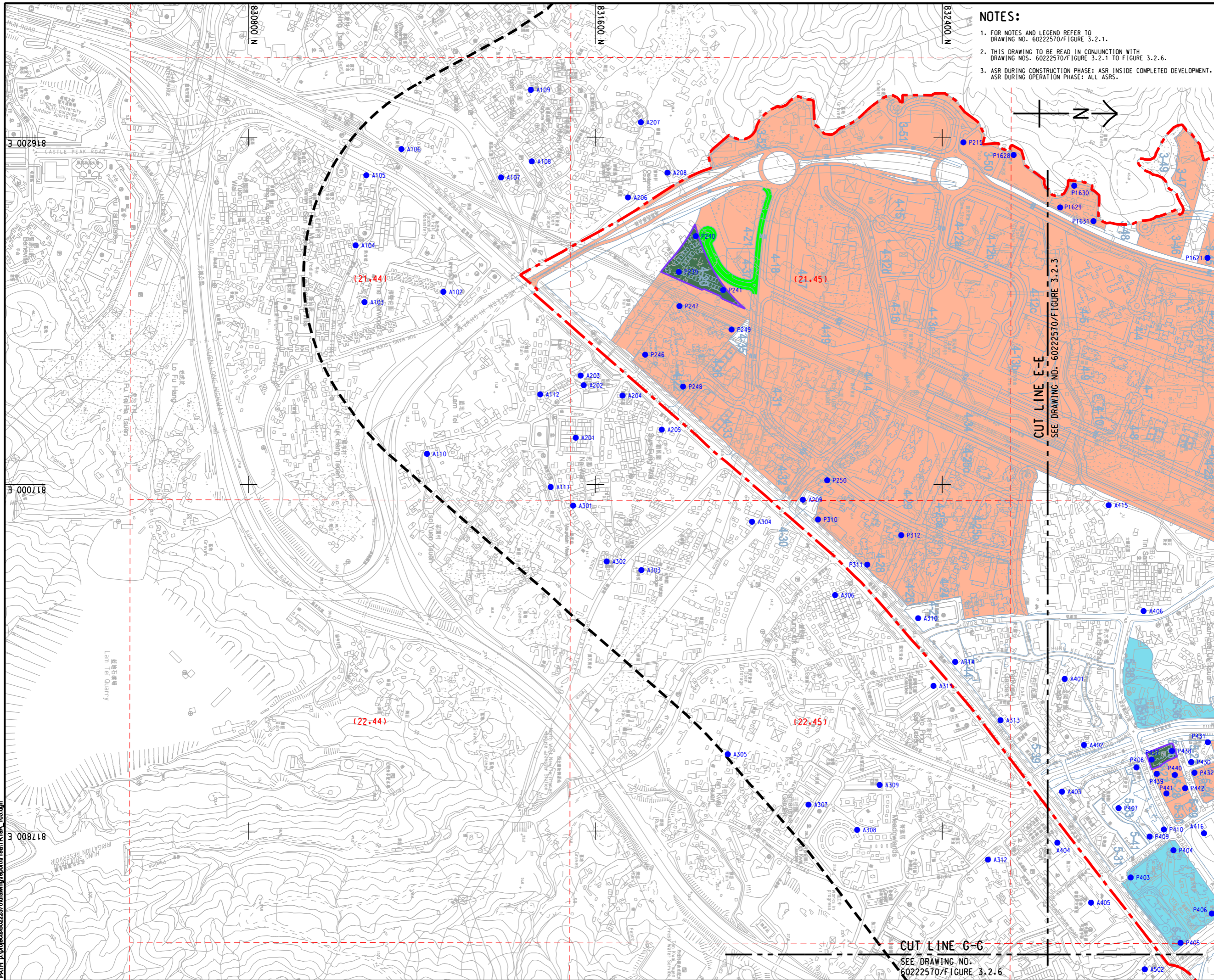
**SHEET TITLE**  
 圖紙名稱  
**LOCATION OF REPRESENTATIVE AIR SENSITIVE RECEIVER (YEAR 2019 - 2030)**  
 代表空氣敏感接收器位置 (2019 - 2030年)  
 SHEET 4 OF 6

**SHEET NUMBER**  
 圖紙編號  
 60222570/TR19A/FIGURE 3.2.4

This drawing has been prepared for the use of AECOM's client. It may not be used, modified, reproduced or relied upon by third parties, except as approved by AECOM or as required by law. AECOM accepts no responsibility, and denies any liability whatsoever, for any party that uses or relies on this drawing without AECOM's express written consent. Do not scale this document. All measurements must be obtained from the stated dimensions.



ISO A1 594mm x 841mm  
 Approved:  
 Checked:  
 Designer:  
 Project Management Initials:  
 Pld File by: HUANGXW  
 PATH: E:\projects\60222570\drawing\center\GnTR19A\_105.dgn



1. FOR NOTES AND LEGEND REFER TO DRAWING NO. 60222570/FIGURE 3.2.1.
2. THIS DRAWING TO BE READ IN CONJUNCTION WITH DRAWING NOS. 60222570/FIGURE 3.2.1 TO FIGURE 3.2.6.
3. ASR DURING CONSTRUCTION PHASE: ASR INSIDE COMPLETED DEVELOPMENT. ASR DURING OPERATION PHASE: ALL ASRS.



**PROJECT**  
 HUNG SHUI KIU NEW DEVELOPMENT AREA  
 PLANNING AND ENGINEERING STUDY  
 - INVESTIGATION

**CLIENT**  
 土木工務發展署  
 Civil Engineering and Development Department

**規劃署**  
 Planning Department

**CONSULTANT**  
 工務顧問公司  
 AECOM Asia Company Ltd.  
 www.aecom.com

**SUB-CONSULTANTS**  
 分判工程顧問公司

**ISSUE/REVISION**  
 修訂

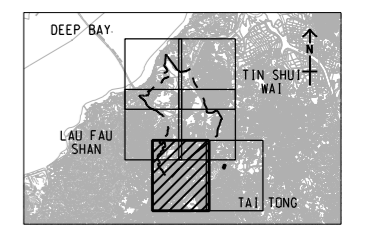
IR	DATE	DESCRIPTION	CHK.

**STATUS**  
 階段

**SCALE**  
 比例  
 A3 1 : 8000

**DIMENSION UNIT**  
 尺寸單位  
 METRES

**KEY PLAN**  
 索引圖  
 A3 1 : 300000



**PROJECT NO.**  
 項目編號  
 60222570

**AGREEMENT NO.**  
 協議編號  
 CE2/2011 (CE)

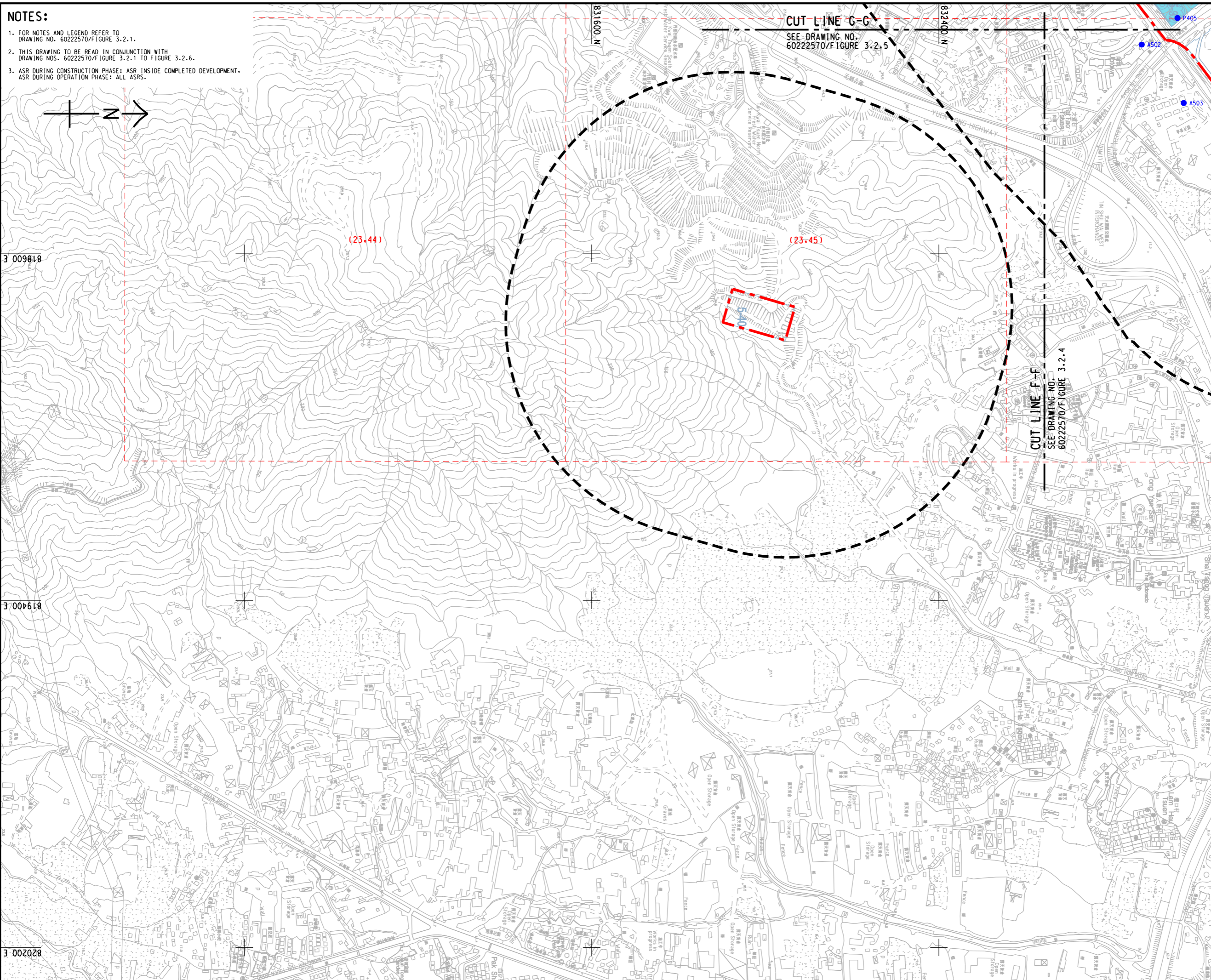
**SHEET TITLE**  
 圖紙名稱  
 LOCATION OF REPRESENTATIVE AIR SENSITIVE RECEIVER (YEAR 2019 - 2030)

SHEET 5 OF 6

**SHEET NUMBER**  
 圖紙編號  
 60222570/TR19A/FIGURE 3.2.5

This drawing has been prepared for the use of AECOM's client. It may not be used, modified, reproduced or relied upon by third parties, except as required by law. AECOM accepts no responsibility, and denies any liability whatsoever, to any party that uses or relies on this drawing without AECOM's express written consent. Do not scale this document. All measurements must be obtained from the stated dimensions.





**NOTES:**

1. FOR NOTES AND LEGEND REFER TO DRAWING NO. 60222570/FIGURE 3.2.1.
2. THIS DRAWING TO BE READ IN CONJUNCTION WITH DRAWING NOS. 60222570/FIGURE 3.2.1 TO FIGURE 3.2.6.
3. ASR DURING CONSTRUCTION PHASE: ASR INSIDE COMPLETED DEVELOPMENT.  
ASR DURING OPERATION PHASE: ALL ASRS.

**CUT LINE G-G**  
SEE DRAWING NO. 60222570/FIGURE 3.2.5

**CUT LINE F-F**  
SEE DRAWING NO. 60222570/FIGURE 3.2.4

**AECOM**

**PROJECT**  
項目

**HUNG SHUI KIU NEW DEVELOPMENT AREA PLANNING AND ENGINEERING STUDY - INVESTIGATION**

**CLIENT**  
業主

**CEDD**  
土木工程拓展署  
Civil Engineering and Development Department

**Planning Department**  
規劃署

**CONSULTANT**  
工程顧問公司

AECOM Asia Company Ltd.  
www.aecom.com

**SUB-CONSULTANTS**  
分判工程顧問公司

**ISSUE/REVISION**  
修訂

NO.	DATE	DESCRIPTION	CHK.

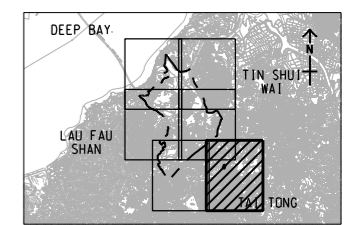
**STATUS**  
階段

**SCALE**  
比例

**DIMENSION UNIT**  
尺寸單位

A3 1 : 8000 METRES

**KEY PLAN** A3 1 : 300000



**PROJECT NO.**  
項目編號

60222570

**AGREEMENT NO.**  
協議編號

CE2/2011 (CE)

**SHEET TITLE**  
圖紙名稱

**LOCATION OF REPRESENTATIVE AIR SENSITIVE RECEIVER (YEAR 2019 - 2030)**

SHEET 6 OF 6

**SHEET NUMBER**  
圖紙編號

60222570/TR19A/FIGURE 3.2.6

This drawing has been prepared for the use of AECOM's client. It may not be used, modified, reproduced or relied upon by third parties, except as agreed by AECOM or as required by law. AECOM accepts no responsibility, and denies any liability whatsoever, to any party that uses or relies on this drawing without AECOM's express written consent. All measurements must be obtained from the related dimensions.