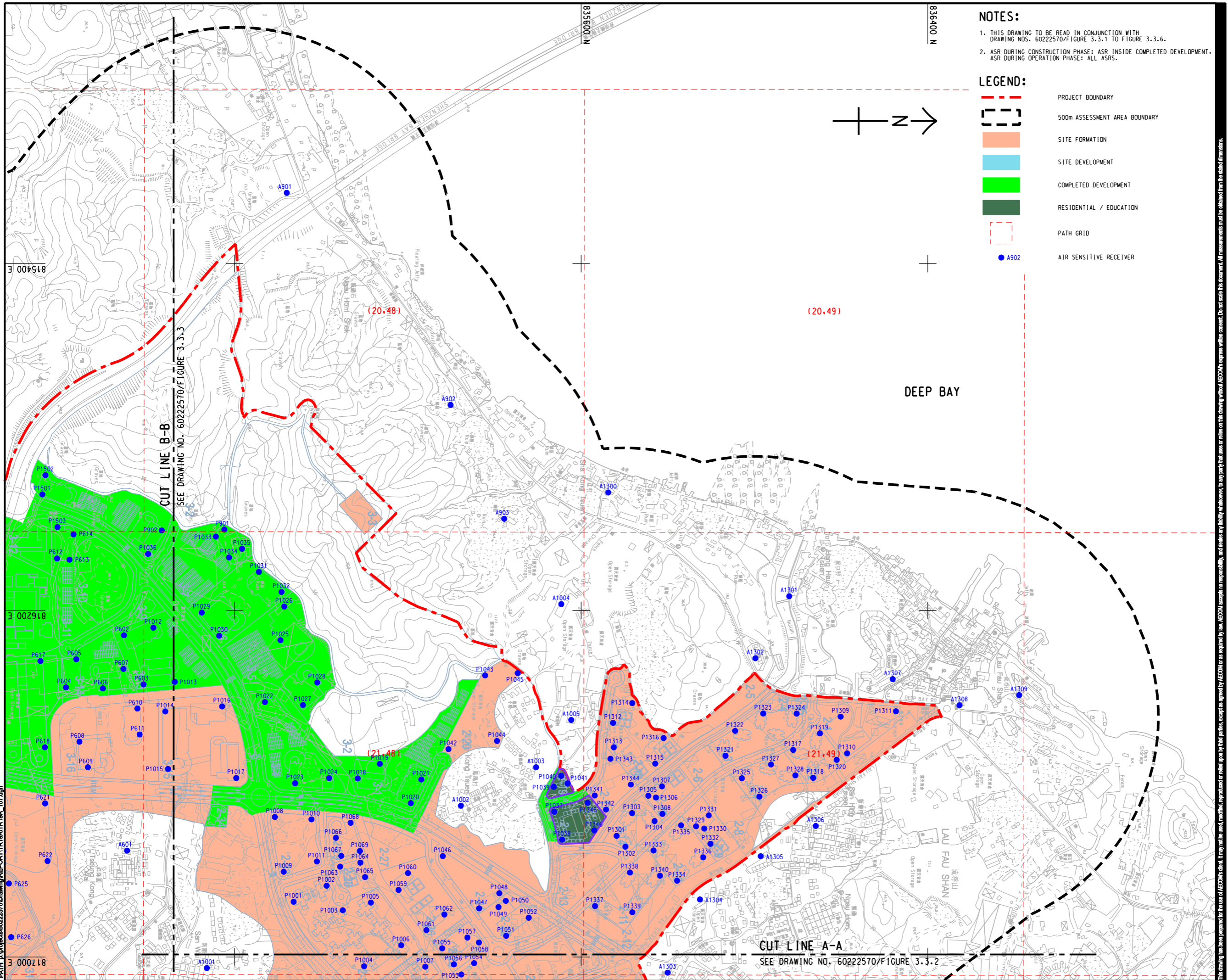


ISO A1 594mm x 841mm
 Approved:
 Checked:
 Designer:
 Project Management Initials:
 Pld File By: YANGYU
 PATH: E:\projects\60222570\Drawings\REPORT\TR19A\TR19A_107.dgn
 817000 E
 816200 E
 815400 E



NOTES:

- THIS DRAWING TO BE READ IN CONJUNCTION WITH DRAWING NOS. 60222570/FIGURE 3.3.1 TO FIGURE 3.3.6.
- ASR DURING CONSTRUCTION PHASE: ASR INSIDE COMPLETED DEVELOPMENT. ASR DURING OPERATION PHASE: ALL ASRS.

LEGEND:

- PROJECT BOUNDARY
- 500m ASSESSMENT AREA BOUNDARY
- SITE FORMATION
- SITE DEVELOPMENT
- COMPLETED DEVELOPMENT
- RESIDENTIAL / EDUCATION
- PATH GRID
- AIR SENSITIVE RECEIVER



PROJECT
HUNG SHUI KIU NEW DEVELOPMENT AREA PLANNING AND ENGINEERING STUDY - INVESTIGATION

CLIENT
 業主

 土木工程拓展署 規劃署
 Civil Engineering and Development Department Planning Department

CONSULTANT
 工程顧問公司
 AECOM Asia Company Ltd.
 www.aecom.com

SUB-CONSULTANTS
 分判工程顧問公司

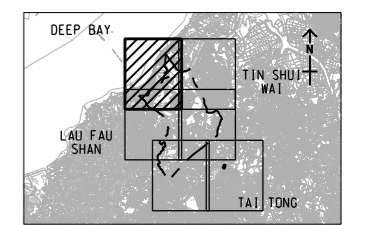
ISSUE/REVISION
 修訂

I/R	DATE	DESCRIPTION	CHK.

STATUS
 階段

SCALE **DIMENSION UNIT**
 比例 尺寸單位

A3 1 : 8000 METRES
 A3 1 : 300000



PROJECT NO. **AGREEMENT NO.**
 項目編號 協議編號
 60222570 CE2/2011 (CE)

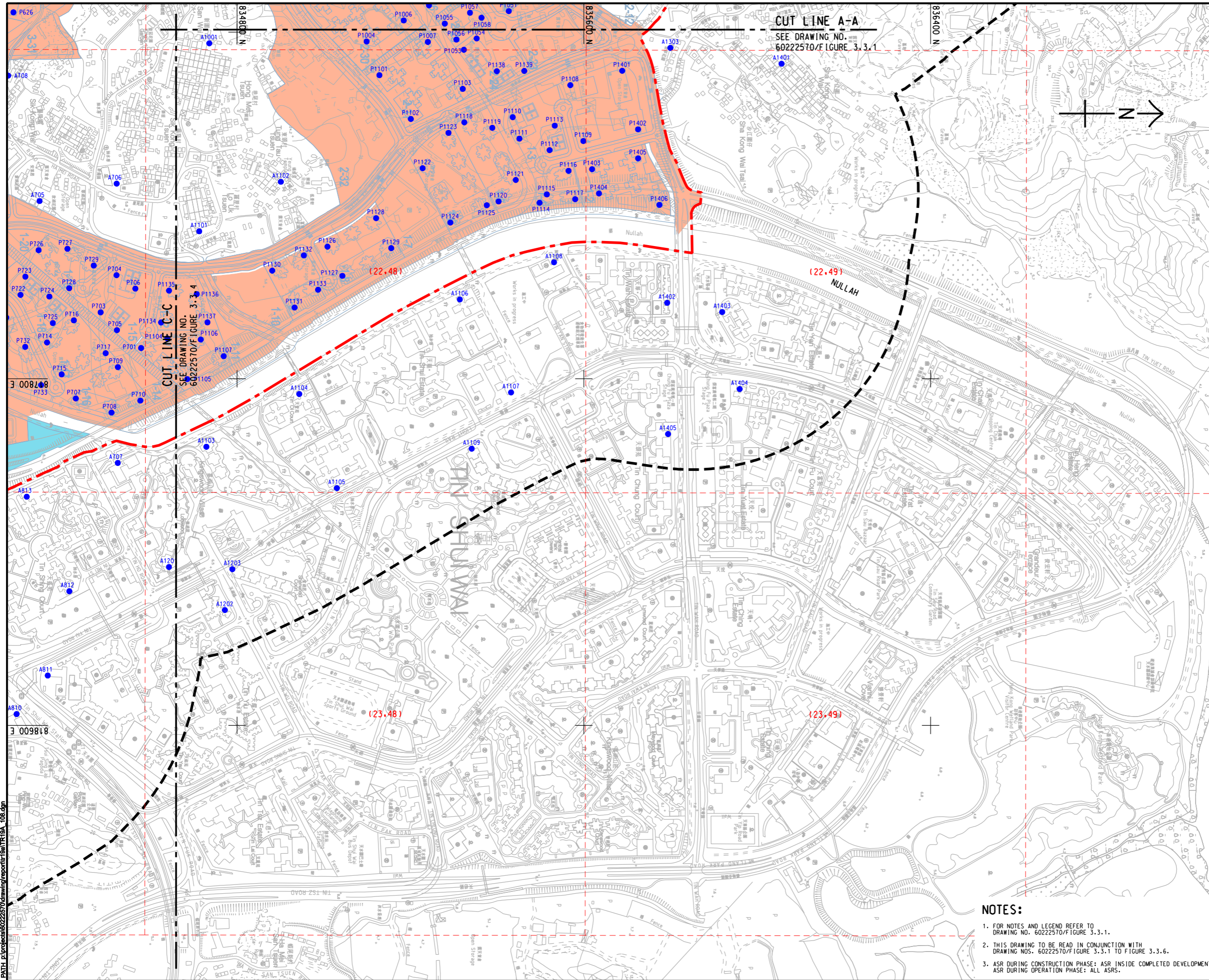
SHEET TITLE
 圖紙名稱
LOCATION OF REPRESENTATIVE AIR SENSITIVE RECEIVER (YEAR 2031 - 2039)
 SHEET 1 OF 6

SHEET NUMBER
 圖紙編號
 60222570/TR19A/FIGURE 3.3.1

This drawing has been prepared for the use of AECOM's client. It may not be used, modified, reproduced or relied upon by third parties, except as approved by AECOM or as required by law. AECOM accepts no responsibility, and denies any liability whatsoever, for any party that uses or relies on this drawing without AECOM's express written consent. Do not scale this document. All measurements must be obtained from the related dimensions.

Pld File by: ANHL
PATH: E:\projects\60222570\drawing\center\Qa\TR19A_108.dgn

Approved: _____
Checked: _____
Designer: _____
Project Management Initials: _____



CUT LINE A-A
SEE DRAWING NO.
60222570/FIGURE 3.3.1

CUT LINE C-C
SEE DRAWING NO.
60222570/FIGURE 3.3.4

AECOM

PROJECT
HUNG SHUI KIU NEW
DEVELOPMENT AREA
PLANNING AND
ENGINEERING STUDY
- INVESTIGATION

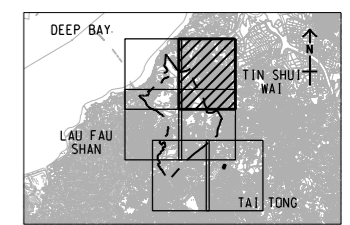
CLIENT
CEDD
土木工程拓展署
Civil Engineering and
Development Department
規劃署
Planning
Department

CONSULTANT
AECOM Asia Company Ltd.
www.aecom.com

SUB-CONSULTANTS
分判工程顧問公司

ISSUE/REVISION			
說明			
	DATE	DESCRIPTION	CHK.

SCALE
A3 1 : 8000
DIMENSION UNIT
METRES



PROJECT NO.
60222570
AGREEMENT NO.
CE2/2011 (CE)

SHEET TITLE
LOCATION OF REPRESENTATIVE
AIR SENSITIVE RECEIVER
(YEAR 2031 - 2039)
SHEET NUMBER
60222570/TR19A/FIGURE 3.3.2
SHEET 2 OF 6

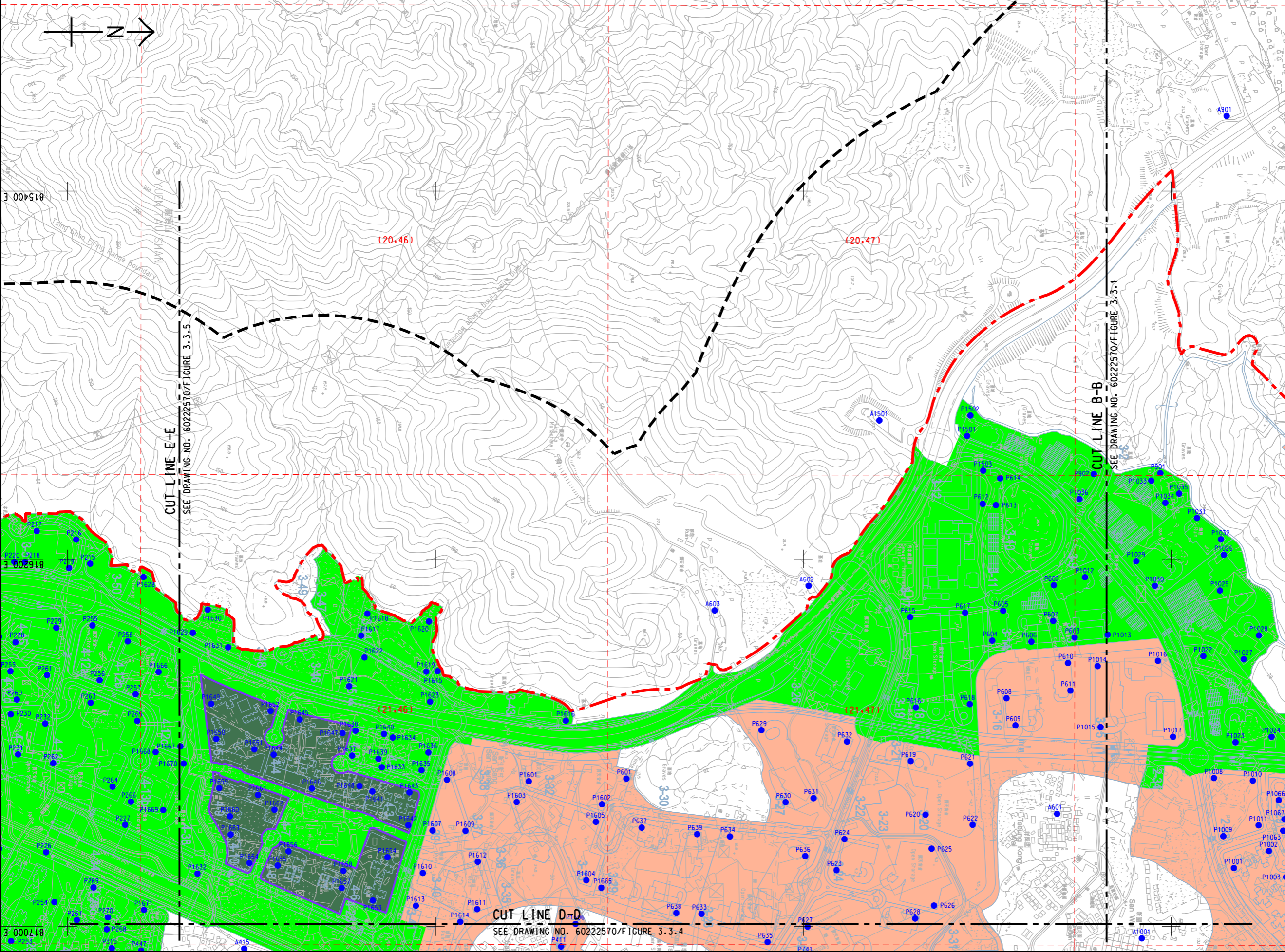
- NOTES:
- FOR NOTES AND LEGEND REFER TO DRAWING NO. 60222570/FIGURE 3.3.1.
 - THIS DRAWING TO BE READ IN CONJUNCTION WITH DRAWING NOS. 60222570/FIGURE 3.3.1 TO FIGURE 3.3.6.
 - ASR DURING CONSTRUCTION PHASE: ASR INSIDE COMPLETED DEVELOPMENT.
ASR DURING OPERATION PHASE: ALL ASRS.

This drawing has been prepared for the use of AECOM's client. It may not be used, modified, reproduced or relied upon by third parties, except as required by law. AECOM accepts no responsibility, and denies any liability whatsoever, for any party that uses or relies on this drawing without AECOM's express written consent. Do not scale this document. All measurements must be obtained from the stated dimensions.

ISO A1 594mm x 841mm
Approved:
Checked:
Designer:
Project Management Initials:
Pld File by: YANGYU
PATH: E:\project\60222570\Drawing\REPORT\TR19A\TR19A_109.dgn

NOTES:

1. FOR NOTES AND LEGEND REFER TO DRAWING NO. 60222570/FIGURE 3.3.1.
2. THIS DRAWING TO BE READ IN CONJUNCTION WITH DRAWING NOS. 60222570/FIGURE 3.3.1 TO FIGURE 3.3.6.
3. ASR DURING CONSTRUCTION PHASE: ASR INSIDE COMPLETED DEVELOPMENT.
ASR DURING OPERATION PHASE: ALL ASRS.



PROJECT

HUNG SHUI KIU NEW DEVELOPMENT AREA PLANNING AND ENGINEERING STUDY - INVESTIGATION

CLIENT



CONSULTANT

AECOM Asia Company Ltd.
www.aecom.com

SUB-CONSULTANTS

ISSUE/REVISION

NO.	DATE	DESCRIPTION	CHK.

STATUS

SCALE

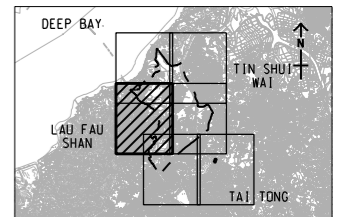
A3 1 : 8000

DIMENSION UNIT

METRES

KEY PLAN

A3 1 : 300000



PROJECT NO.

60222570

AGREEMENT NO.

CE2/2011 (CE)

SHEET TITLE

LOCATION OF REPRESENTATIVE AIR SENSITIVE RECEIVER (YEAR 2031 - 2039)

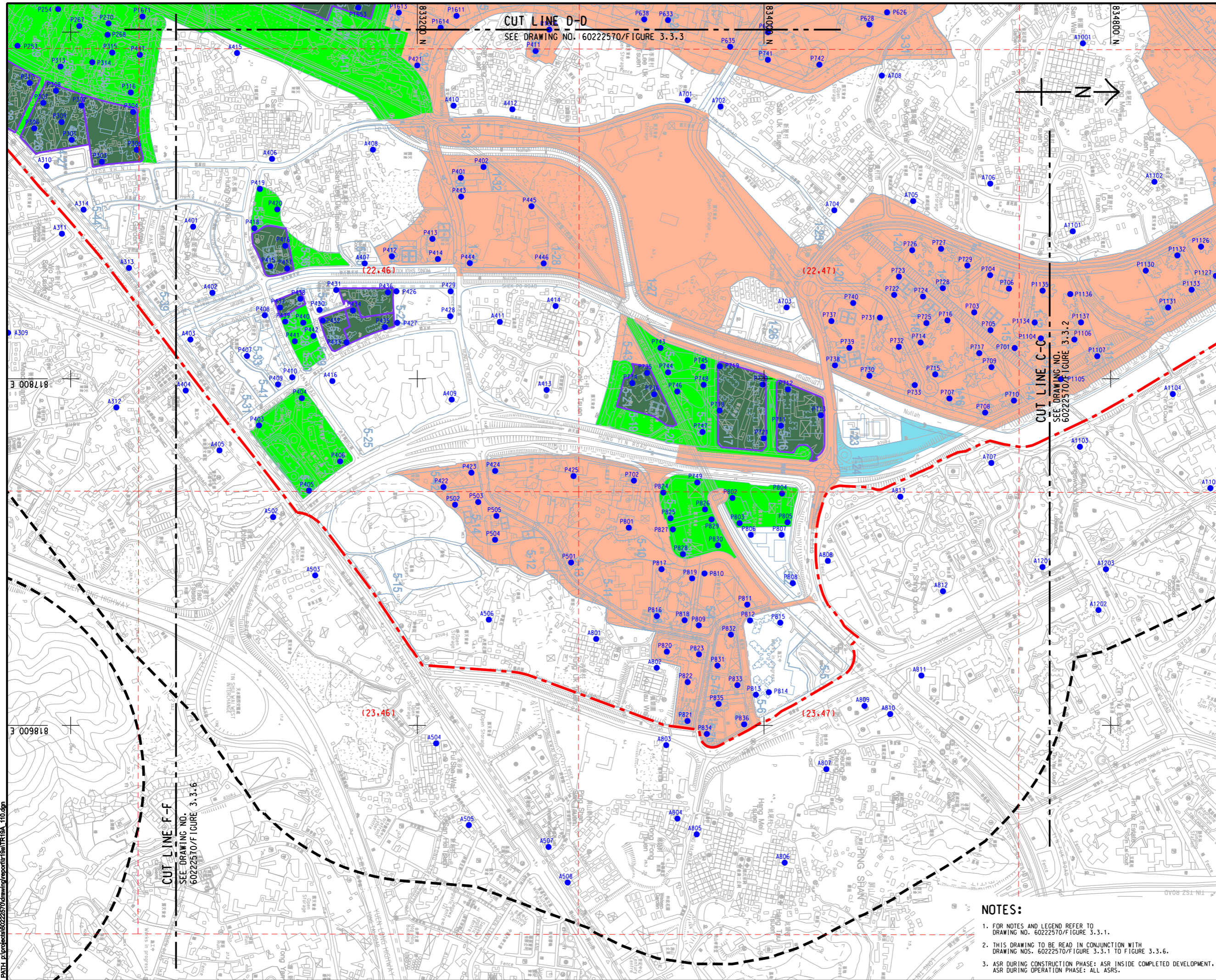
SHEET 3 OF 6

SHEET NUMBER

60222570/TR19A/FIGURE 3.3.3

This drawing has been prepared for the use of AECOM's client. It may not be used, modified, reproduced or relied upon by third parties, except as required by law. AECOM accepts no responsibility, and disclaims any liability whatsoever, for any party that uses or relies on this drawing without AECOM's express written consent. Do not scale this document. All measurements must be obtained from the stated dimensions.

Pld File by: YANGYUW
PATH: E:\projects\60222570\drawing\paper\GnTR19A_110.dgn



AECOM

PROJECT

HUNG SHUI KIU NEW DEVELOPMENT AREA PLANNING AND ENGINEERING STUDY - INVESTIGATION

CLIENT



CONSULTANT

AECOM Asia Company Ltd.
www.aecom.com

SUB-CONSULTANTS

分判工程顧問公司

ISSUE/REVISION

IR	DATE	DESCRIPTION	CHK.

STATUS

SCALE

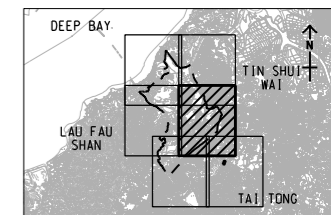
A3 1: 8000

KEY PLAN

DIMENSION UNIT

METRES

A3 1: 300000



PROJECT NO.

60222570

AGREEMENT NO.

CE2/2011 (CE)

SHEET TITLE

LOCATION OF REPRESENTATIVE AIR SENSITIVE RECEIVER (YEAR 2031 - 2039)

SHEET 4 OF 6

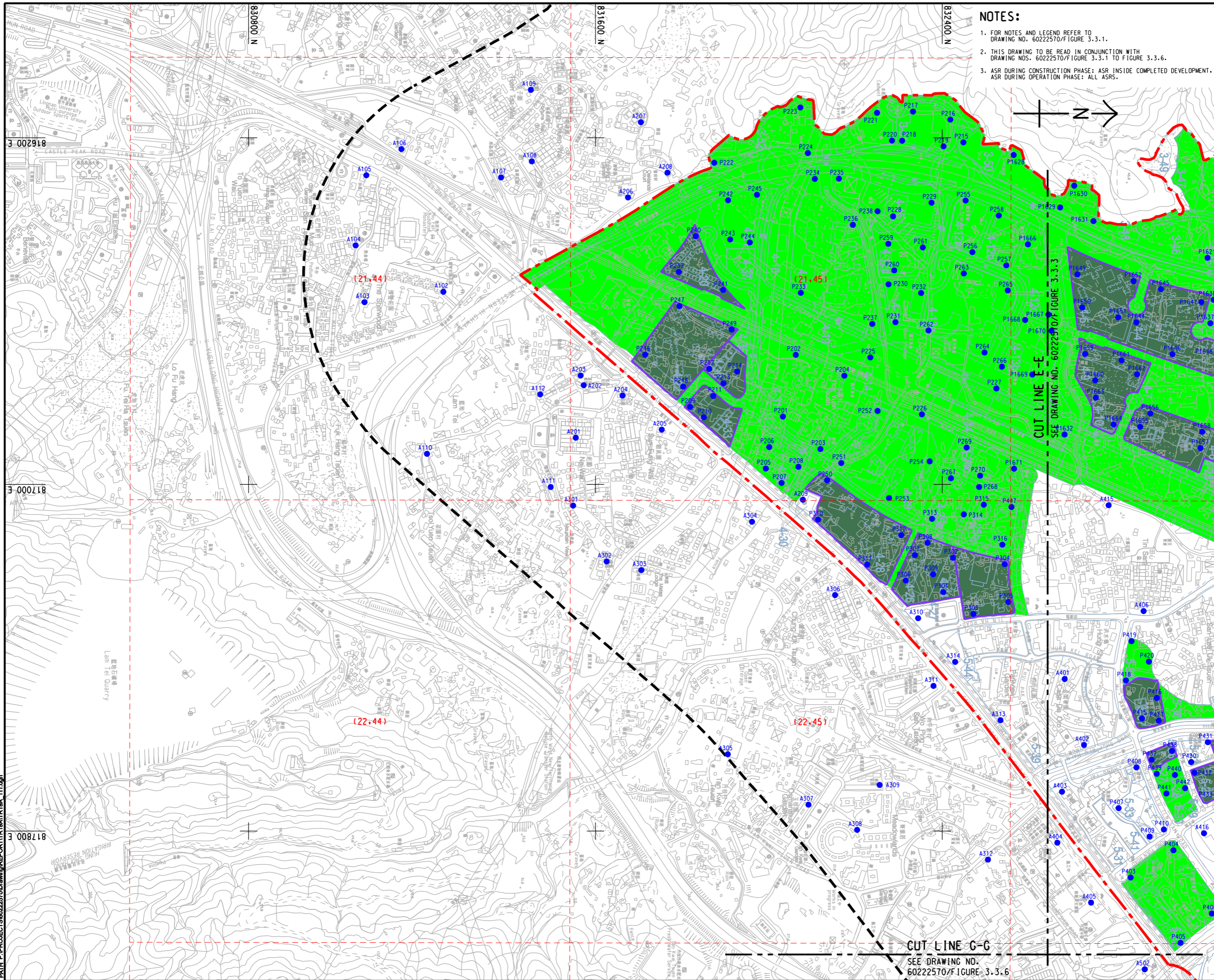
SHEET NUMBER

60222570/TR19A/FIGURE 3.3.4

NOTES:

- FOR NOTES AND LEGEND REFER TO DRAWING NO. 60222570/FIGURE 3.3.1.
- THIS DRAWING TO BE READ IN CONJUNCTION WITH DRAWING NOS. 60222570/FIGURE 3.3.1 TO FIGURE 3.3.6.
- ASR DURING CONSTRUCTION PHASE: ASR INSIDE COMPLETED DEVELOPMENT, ASR DURING OPERATION PHASE: ALL ASRS.

This drawing has been prepared for the use of AECOM's client. It may not be used, modified, reproduced or relied upon by third parties, except as approved by AECOM or as required by law. AECOM accepts no responsibility, and denies any liability whatsoever, for any party that uses or relies on this drawing without AECOM's express written consent. Do not scale this document. All measurements must be obtained from the stated dimensions.



NOTES:

1. FOR NOTES AND LEGEND REFER TO DRAWING NO. 60222570/FIGURE 3.3.1.
2. THIS DRAWING TO BE READ IN CONJUNCTION WITH DRAWING NOS. 60222570/FIGURE 3.3.1 TO FIGURE 3.3.6.
3. ASR DURING CONSTRUCTION PHASE: ASR INSIDE COMPLETED DEVELOPMENT. ASR DURING OPERATION PHASE: ALL ASRS.



PROJECT

HUNG SHUI KIU NEW DEVELOPMENT AREA PLANNING AND ENGINEERING STUDY - INVESTIGATION

CLIENT



土木工程拓展署
Civil Engineering and Development Department



規劃署
Planning Department

CONSULTANT

AECOM Asia Company Ltd.
www.aecom.com

SUB-CONSULTANTS

分判工程顧問公司

ISSUE/REVISION

IR	DATE	DESCRIPTION	CHK.

STATUS

SCALE

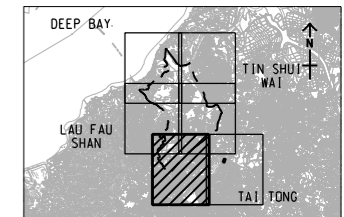
A3 1 : 8000

DIMENSION UNIT

METRES

KEY PLAN

A3 1 : 300000



PROJECT NO.

60222570

AGREEMENT NO.

CE2/2011 (CE)

SHEET TITLE

LOCATION OF REPRESENTATIVE AIR SENSITIVE RECEIVER (YEAR 2031 - 2039)

SHEET 5 OF 6

SHEET NUMBER

60222570/TR19A/FIGURE 3.3.5

This drawing has been prepared for the use of AECOM's client. It may not be used, modified, reproduced or relied upon by third parties, except as agreed by AECOM or as required by law. AECOM accepts no responsibility, and denies any liability whatsoever, to any party that uses or relies on this drawing without AECOM's express written consent. Do not trace this document. AECOM's express written consent must be obtained from the stated dimensions.

ISO A1 594mm x 841mm
Approved:
Checked:
Designer:
Project Management Initials:
Pld File by: ZENGFX
PATH: P:\PROJECTS\60222570\DRAWING\REPORT\TR19A\TR19A_112.dgn

NOTES:

1. FOR NOTES AND LEGEND REFER TO DRAWING NO. 60222570/FIGURE 3.3.1.
2. THIS DRAWING TO BE READ IN CONJUNCTION WITH DRAWING NOS. 60222570/FIGURE 3.3.1 TO FIGURE 3.3.6.
3. ASR DURING CONSTRUCTION PHASE: ASR INSIDE COMPLETED DEVELOPMENT.
ASR DURING OPERATION PHASE: ALL ASRS.



819400 E

819400 E

820200 E

831600 N

832400 N

CUT LINE G-G
SEE DRAWING NO. 60222570/FIGURE 3.3.5

CUT LINE F-F
SEE DRAWING NO. 60222570/FIGURE 3.3.4

(23.44)

(23.45)



PROJECT
項目
HUNG SHUI KIU NEW DEVELOPMENT AREA PLANNING AND ENGINEERING STUDY - INVESTIGATION

CLIENT
業主
CEDD
土木工程拓展署
Civil Engineering and Development Department
Planning Department

CONSULTANT
工程顧問公司
AECOM Asia Company Ltd.
www.aecom.com

SUB-CONSULTANTS
分判工程顧問公司

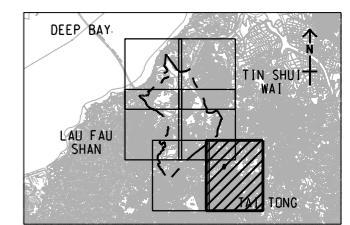
ISSUE/REVISION
修訂

IR	DATE	DESCRIPTION	CHK.
修訂	日期	內容摘要	核對

STATUS
階段

SCALE
比例
A3 1 : 8000
DIMENSION UNIT
尺寸單位
METRES

KEY PLAN
索引圖
A3 1 : 300000



PROJECT NO.
項目編號
60222570
AGREEMENT NO.
協議編號
CE2/2011 (CE)

SHEET TITLE
圖紙名稱
LOCATION OF REPRESENTATIVE AIR SENSITIVE RECEIVER (YEAR 2031 - 2039)
SHEET NUMBER
圖紙編號
60222570/TR19A/FIGURE 3.3.6

This drawing has been prepared for the use of AECOM's client. It may not be used, modified, reproduced or relied upon by third parties, except as approved by AECOM or as required by law. AECOM accepts no responsibility, and denies any liability whatsoever, to any party that uses or relies on this drawing without AECOM's express written consent. Do not scale this document. All measurements must be obtained from the related dimensions.