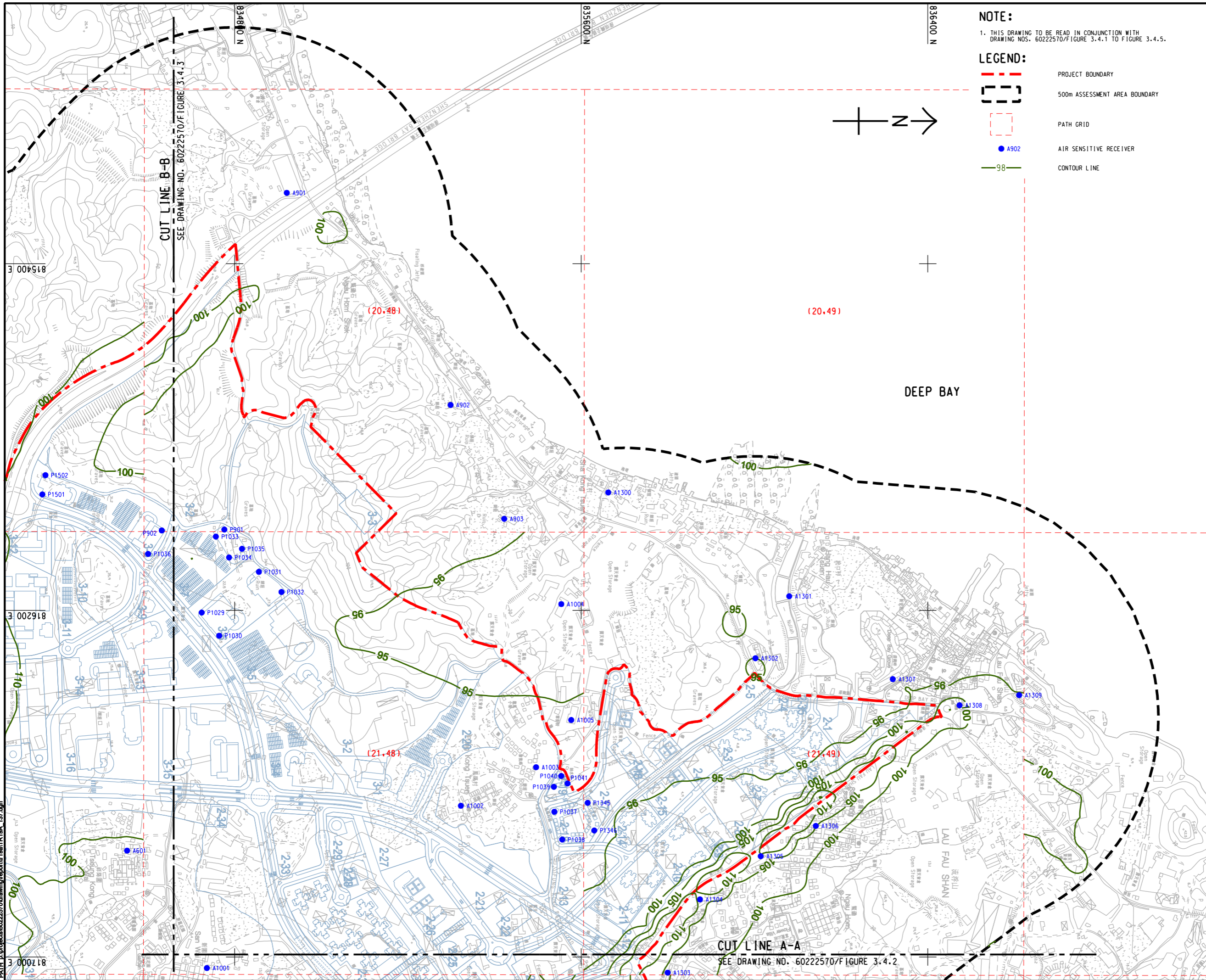


ISO A1 594mm x 841mm
 Approved:
 Checked:
 Designer:
 Project Management Initials:
 Pld File by: HUANGXW
 PATH: E:\projects\60222570\drawing\center\Gaitr\19A_137.dgn
 815400 E
 816200 E
 817000 E

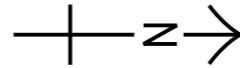


NOTE:

1. THIS DRAWING TO BE READ IN CONJUNCTION WITH DRAWING NOS. 60222570/FIGURE 3.4.1 TO FIGURE 3.4.5.

LEGEND:

- - - PROJECT BOUNDARY
- - - 500m ASSESSMENT AREA BOUNDARY
- - - PATH GRID
- A902 AIR SENSITIVE RECEIVER
- 98 CONTOUR LINE



PROJECT
 HUNG SHUI KIU NEW DEVELOPMENT AREA PLANNING AND ENGINEERING STUDY - INVESTIGATION

CLIENT
 CEDD
 土木工程拓展署
 Civil Engineering and Development Department
 規劃署
 Planning Department

CONSULTANT
 AECOM Asia Company Ltd.
 www.aecom.com

SUB-CONSULTANTS
 分判工程顧問公司

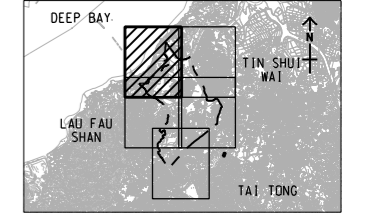
ISSUE/REVISION
 修訂

IR/修訂	DATE/日期	DESCRIPTION/內容摘要	CHK/核對

STATUS
 階段

SCALE
 比例
 A3 1 : 8000
DIMENSION UNIT
 尺寸單位
 METRES

KEY PLAN
 索引圖
 A3 1 : 300000



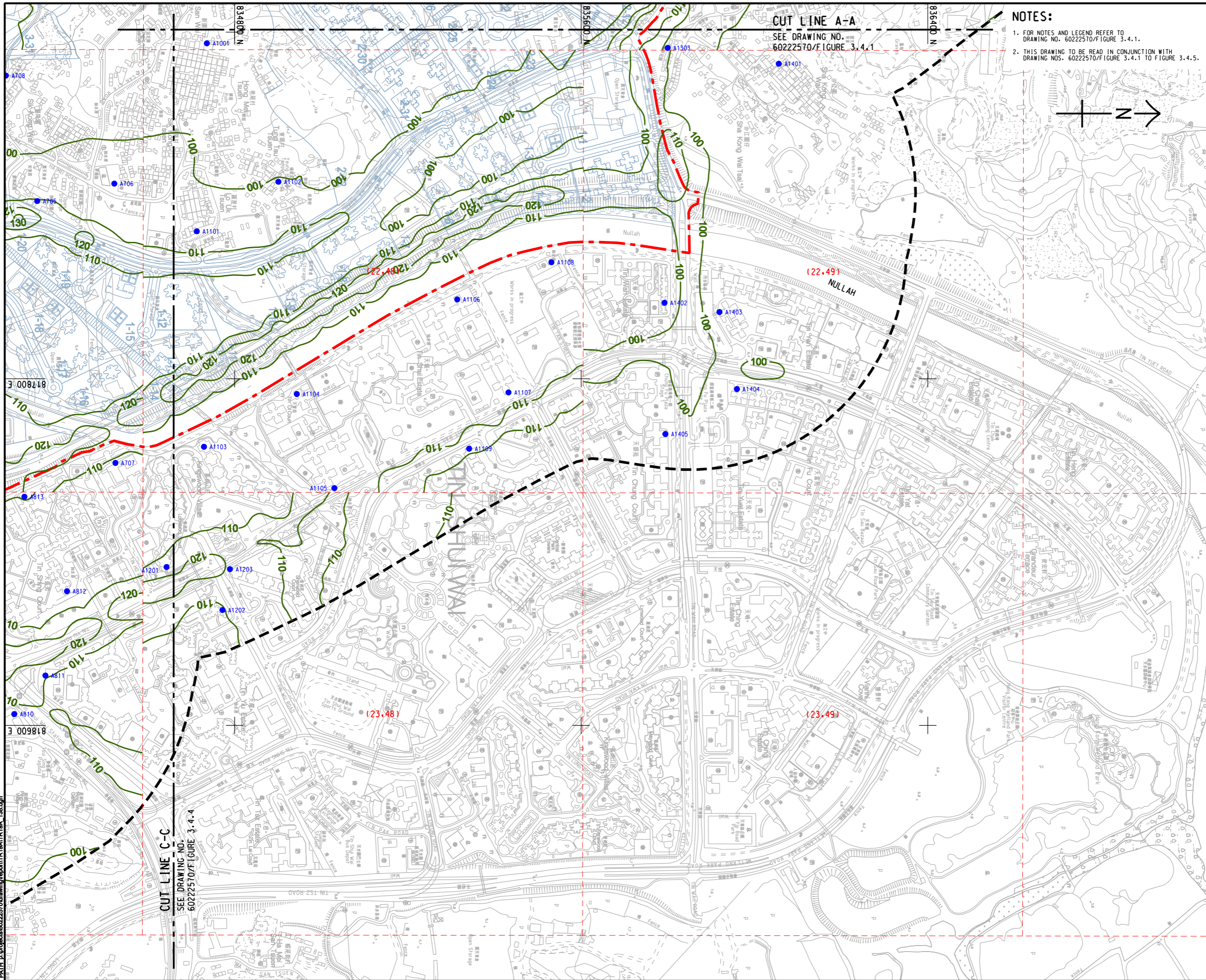
PROJECT NO.
 項目編號
 60222570
AGREEMENT NO.
 協議編號
 CE2/2011 (CE)

SHEET TITLE
 圖紙名稱
 CONTOURS OF CUMULATIVE 19th HIGHEST 1-HOUR NO₂ CONCENTRATION (ug/m³) AT 1.5m ABOVE GROUND (YEAR 2024 - 2030)
SHEET NUMBER
 圖紙編號
 SHEET 1 OF 5
 60222570/TR19A/FIGURE 3.4.1

This drawing has been prepared for the use of AECOM's client. It may not be used, modified, reproduced or relied upon by third parties, except as required by law. AECOM accepts no responsibility, and denies any liability whatsoever, for any party that uses or relies on this drawing without AECOM's express written consent. Do not scale this document. All measurements must be obtained from the stated dimensions.

ISO A1 594mm x 841mm
 Approved:
 Checked:
 Designer:
 Project Management Initials:

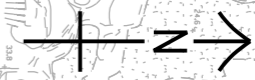
Pld File by: HUANGXW
 PATH: E:\projects\60222570\drawing\tr19a\tr19a_138.dgn



CUT LINE A-A
 SEE DRAWING NO.
 60222570/FIGURE 3.4.1

CUT LINE C-C
 SEE DRAWING NO.
 60222570/FIGURE 3.4.4

- NOTES:**
- FOR NOTES AND LEGEND REFER TO DRAWING NO. 60222570/FIGURE 3.4.1.
 - THIS DRAWING TO BE READ IN CONJUNCTION WITH DRAWING NOS. 60222570/FIGURE 3.4.1 TO FIGURE 3.4.5.



AECOM

PROJECT
 項目
HUNG SHUI KIU NEW DEVELOPMENT AREA PLANNING AND ENGINEERING STUDY - INVESTIGATION

CLIENT
 業主


 土木工程拓展署
 Civil Engineering and Development Department


 規劃署
 Planning Department

CONSULTANT
 工程顧問公司
 AECOM Asia Company Ltd.
 www.aecom.com

SUB-CONSULTANTS
 分判工程顧問公司

ISSUE/REVISION
 修訂

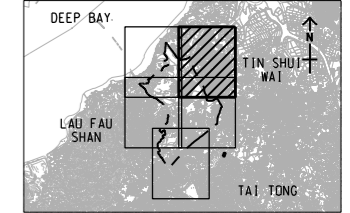
IR	DATE	DESCRIPTION	CHK.

STATUS
 階段

SCALE
 比例
 A3 1 : 8000

DIMENSION UNIT
 尺寸單位
 METRES

KEY PLAN A3 1 : 300000
 索引圖



PROJECT NO.
 項目編號
 60222570

AGREEMENT NO.
 協議編號
 CE2/2011 (CE)

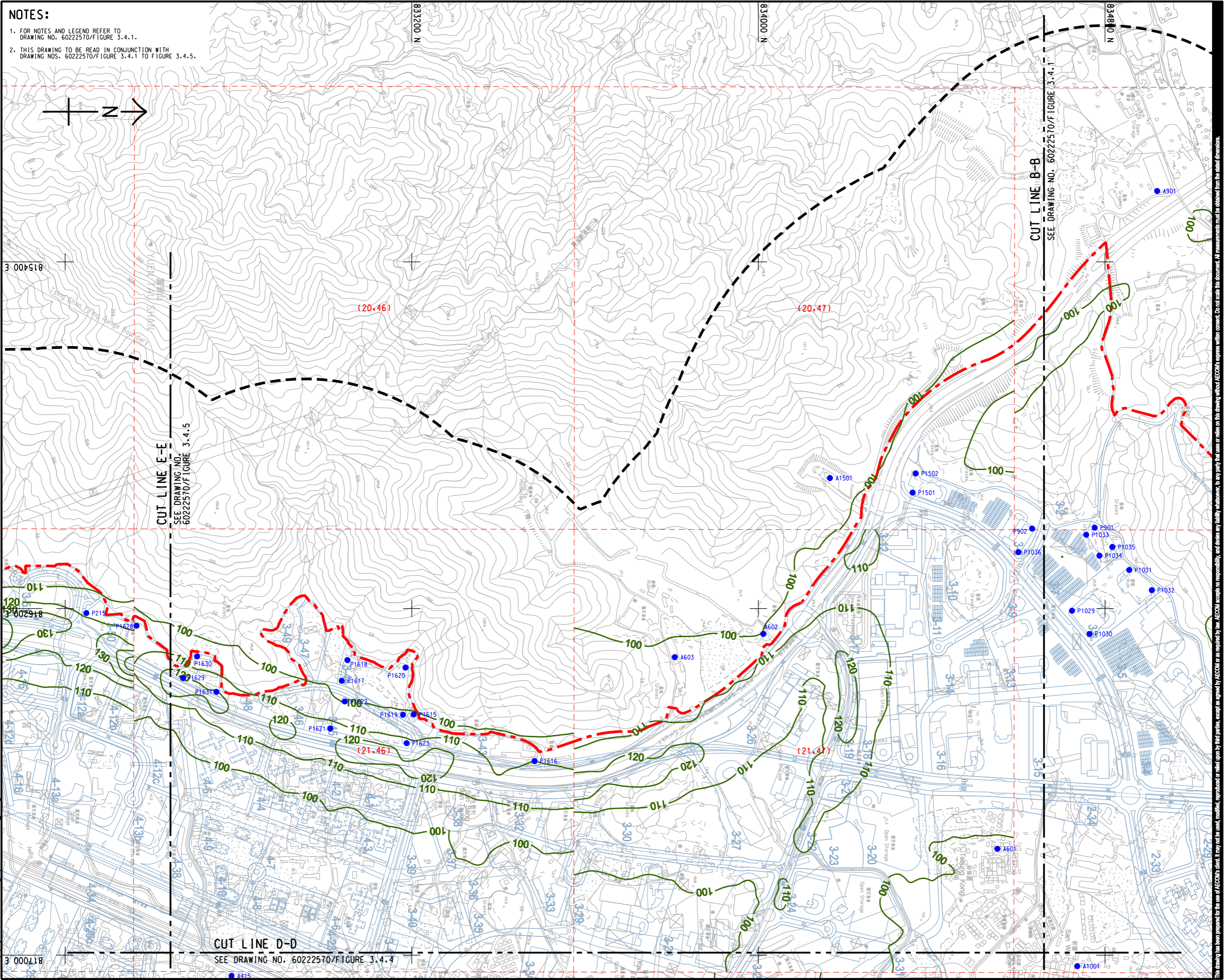
SHEET TITLE
 圖紙名稱
 CONTOURS OF CUMULATIVE 19th HIGHEST 1-HOUR NO₂ CONCENTRATION (ug/m³) AT 1.5m ABOVE GROUND (YEAR 2024 - 2030)

SHEET NUMBER
 圖紙編號
 SHEET 2 OF 5

60222570/TR19A/FIGURE 3.4.2

This drawing has been prepared for the use of AECOM's client. It may not be used, modified, reproduced or relied upon by third parties, except as agreed by AECOM or as required by law. AECOM accepts no responsibility, and disclaims any liability whatsoever, for any party that uses or relies on this drawing without AECOM's express written consent. Do not scale this document. All measurements must be obtained from the related dimensions.

ISO A1 594mm x 841mm
Approved:
Checked:
Designer:
Project Management Initials:
Pld File by: HUANGXW
PATH: E:\projects\60222570\drawing\pset\TR19A\TR19A_139.dgn



NOTES:
 1. FOR NOTES AND LEGEND REFER TO DRAWING NO. 60222570/FIGURE 3.4.1.
 2. THIS DRAWING TO BE READ IN CONJUNCTION WITH DRAWING NOS. 60222570/FIGURE 3.4.1 TO FIGURE 3.4.5.

AECOM

PROJECT
 HUNG SHUI KIU NEW DEVELOPMENT AREA PLANNING AND ENGINEERING STUDY - INVESTIGATION

CLIENT
 CEDD
 土木工程拓展署
 Civil Engineering and Development Department

CONSULTANT
 AECOM Asia Company Ltd.
 www.aecom.com

SUB-CONSULTANTS
 分判工程顧問公司

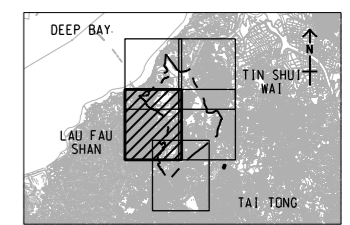
ISSUE/REVISION

NO.	DATE	DESCRIPTION	CHK.

SCALE
 比例: A3 1 : 8000

DIMENSION UNIT
 尺寸單位: METRES

KEY PLAN
 索引圖: A3 1 : 300000



PROJECT NO.
 項目編號: 60222570

AGREEMENT NO.
 協議編號: CE2/2011 (CE)

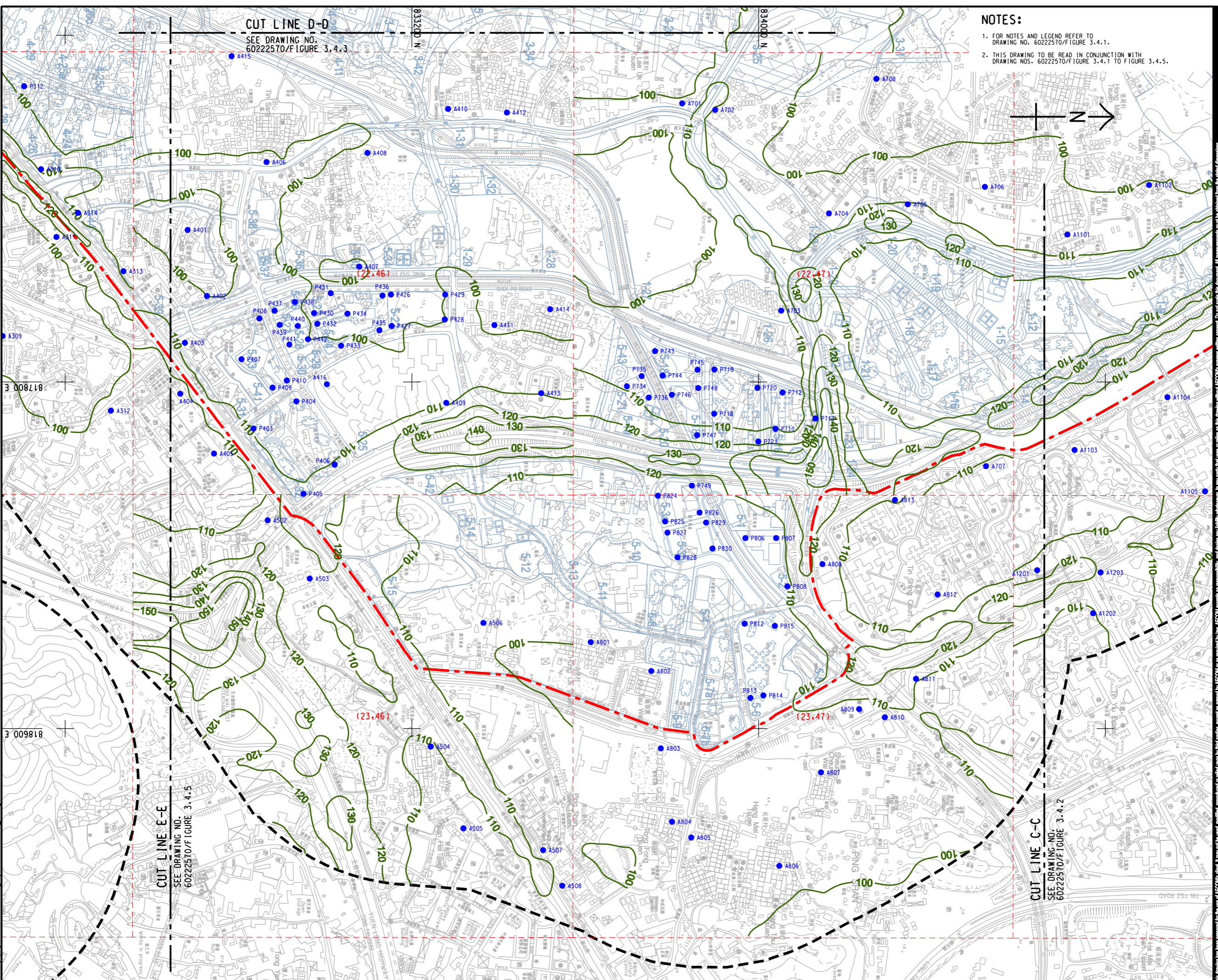
SHEET TITLE
 圖紙名稱: CONTOURS OF CUMULATIVE 19th HIGHEST 1-HOUR NO₂ CONCENTRATION (ug/m³) AT 1.5m ABOVE GROUND (YEAR 2024 - 2030)

SHEET NUMBER
 圖紙號碼: SHEET 3 OF 5

60222570/TR19A/FIGURE 3.4.3

This drawing has been prepared for the use of AECOM's client. It may not be used, modified, reproduced or relied upon by third parties, except as required by law. AECOM accepts no responsibility, and disclaims any liability whatsoever, for any party that uses or relies on this drawing without AECOM's express written consent. Do not scale this document. All measurements must be obtained from the stated dimensions.

ISO A1 594mm x 841mm
 Approved:
 Checked:
 Designer:
 Project Management Initials:
 Pld File by: HUANGXW
 PATH: E:\projects\60222570\drawing\tr19a\tr19a_140.dgn



NOTES:

1. FOR NOTES AND LEGEND REFER TO DRAWING NO. 60222570/FIGURE 3.4.1.
2. THIS DRAWING TO BE READ IN CONJUNCTION WITH DRAWING NOS. 60222570/FIGURE 3.4.1 TO FIGURE 3.4.5.

AECOM

PROJECT
 HUNG SHUI KIU NEW DEVELOPMENT AREA PLANNING AND ENGINEERING STUDY - INVESTIGATION

CLIENT
 CEDD
 土木工程拓展署
 Civil Engineering and Development Department

CONSULTANT
 AECOM Asia Company Ltd.
 www.aecom.com

SUB-CONSULTANTS
 分判工程顧問公司

ISSUE/REVISION

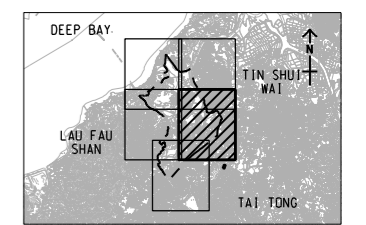
NO.	DATE	DESCRIPTION	CHK.

STATUS
 現狀

SCALE
 比例
 A3 1 : 8000

DIMENSION UNIT
 尺寸單位
 METRES

KEY PLAN
 索引圖
 A3 1 : 300000



PROJECT NO.
 項目編號
 60222570

AGREEMENT NO.
 協議編號
 CE2/2011 (CE)

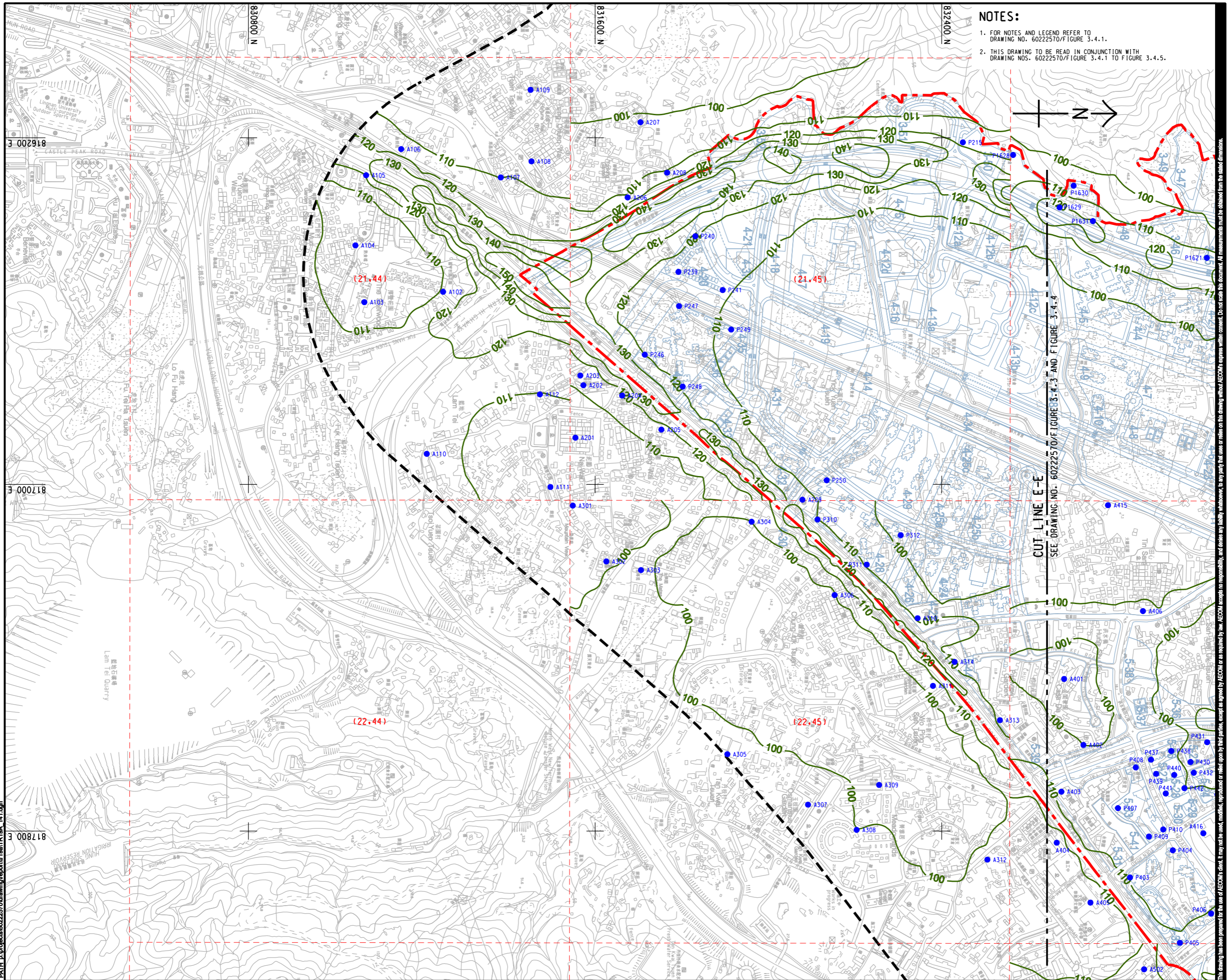
SHEET TITLE
 圖紙標題
 CONTOURS OF CUMULATIVE 19th HIGHEST 1-HOUR NO₂ CONCENTRATION (ug/m³) AT 1.5m ABOVE GROUND (YEAR 2024 - 2030)

SHEET NUMBER
 圖紙編號
 SHEET 4 OF 5

60222570/TR19A/FIGURE 3.4.4

This drawing has been prepared for the use of AECOM's client. It may not be used, modified, reproduced or relied upon by third parties, except as approved by AECOM or as required by law. AECOM accepts no responsibility, and disclaims any liability whatsoever, for any party that uses or relies on this drawing without AECOM's express written consent. Do not create this document. AECOM's express written consent must be obtained from the stated dimensions.

ISO A1 594mm x 841mm
Approved:
Checked:
Designer:
Project Management Initials:
Pld File by: HUANGXW
PATH: E:\projects\60222570\drawing\center\GnTR19A_141.dgn



NOTES:
 1. FOR NOTES AND LEGEND REFER TO DRAWING NO. 60222570/FIGURE 3.4.1.
 2. THIS DRAWING TO BE READ IN CONJUNCTION WITH DRAWING NOS. 60222570/FIGURE 3.4.1 TO FIGURE 3.4.5.

AECOM

PROJECT
 HUNG SHUI KIU NEW DEVELOPMENT AREA PLANNING AND ENGINEERING STUDY - INVESTIGATION

CLIENT
 
 土木工程拓展署 規劃署
 Civil Engineering and Development Department Planning Department

CONSULTANT
 工務顧問公司
 AECOM Asia Company Ltd.
 www.aecom.com

SUB-CONSULTANTS
 分判工務顧問公司

ISSUE/REVISION
 修訂

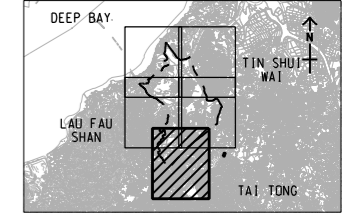
IR	DATE	DESCRIPTION	CHK.

STATUS
 階段

SCALE
 比例
 A3 1 : 8000

DIMENSION UNIT
 尺寸單位
 METRES

KEY PLAN
 索引圖
 A3 1 : 300000



PROJECT NO.
 項目編號
 60222570

AGREEMENT NO.
 協議編號
 CE2/2011 (CE)

SHEET TITLE
 圖紙名稱
 CONTOURS OF CUMULATIVE 19th HIGHEST 1-HOUR NO₂ CONCENTRATION (ug/m³) AT 1.5m ABOVE GROUND (YEAR 2024 - 2030)

SHEET NUMBER
 圖紙編號
 SHEET 5 OF 5

60222570/TR19A/FIGURE 3.4.5

This drawing has been prepared for the use of AECOM's client. It may not be used, modified, reproduced or relied upon by third parties, except as approved by AECOM or as required by law. AECOM accepts no responsibility, and denies any liability whatsoever, to any party, for losses or claims on this drawing without AECOM's express written consent. Do not scale this document. All measurements must be obtained from the stated dimensions.