

Existing Baseline Conditions



Proposed HSK Development without Mitigation at Day 1 (Operation Phase)

Note:
 The photomontages illustrating views at Day 1 represent the commencement of Operation Phase for the entire HSK development, with and without mitigation measures.
 The photomontages illustrating views at Year 10 of Operation Phase identify anticipated changes in mitigation measures from the Day 1 scenario.

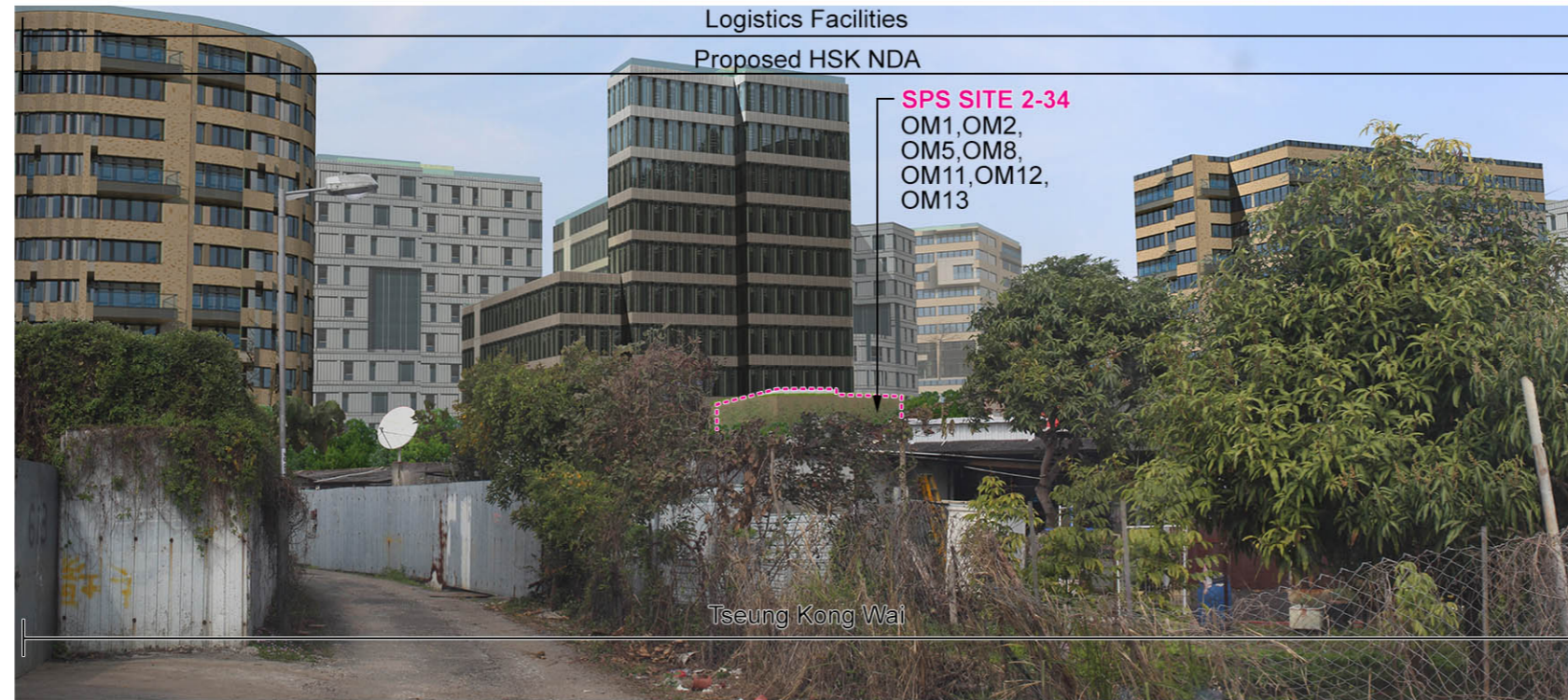


KEY PLAN

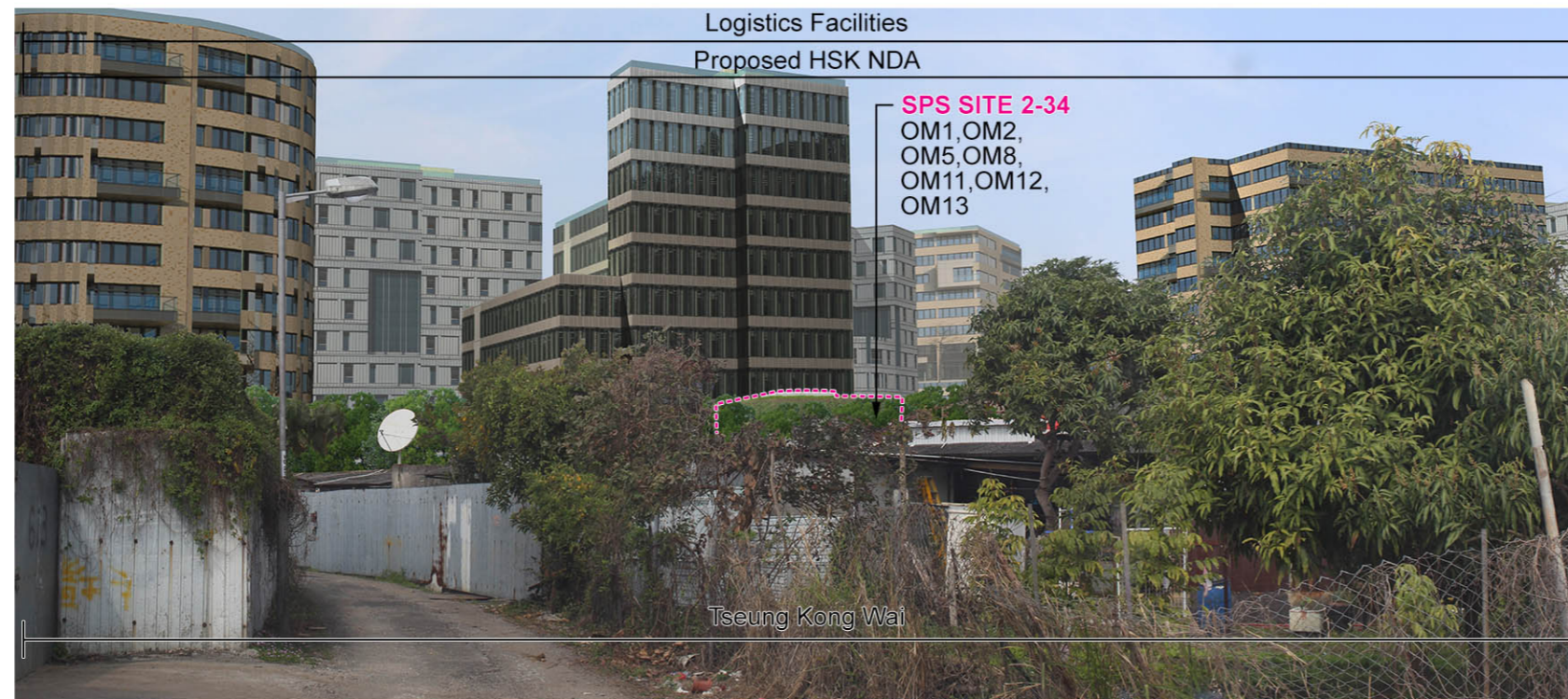


Agreement No. CE 2/2011 (CE)
 Hung Shui Kiu New Development Area Planning and Engineering Study - Investigation
Photomontage 01 - View from Proposed Heritage Trail

SCALE	N.T.S.	DATE	AUG 2016
CHECK	AM	DRAWN	LW
JOB No.	60222570	FIGURE	11.57a
		REV	



Proposed HSK Development with Mitigation at Day 1 (Operation Phase)



Proposed HSK Development with Mitigation at Year 10 (Operation Phase)

Mitigation Measures

Construction Mitigation (CM)

- CM1 - Minimised construction area and contractor's temporary works areas
- CM3 - Protection of existing trees
- CM4 - Transplantation of existing trees where practical
- CM5 - Control of night-time lighting
- CM6 - Construction of decorative hoarding around construction works

- CM7 - Reduction of construction period to practical minimum
- CM10 - Advance screen planting
- CM11 - Minimise disturbance footprints

Operation Mitigation (OM)

- OM1 - Compensatory tree planting where practical
- OM2 - Sensitive design of above-ground structures
- OM5 - Visual softening via soft landscape elements
- OM8 - Sensitive and chromatic treatment of architectural facades

- OM11 - Tree planting to site boundaries
- OM12 - Night time lighting
- OM13 - Green roofs and vertical greening

Note: CM1 - CM14, and other mitigation measures not shown in these figures, are considered best practices throughout the entire NDA and should be implemented to the fullest extent possible.



KEY PLAN



Agreement No. CE 2/2011 (CE)
 Hung Shui Kiu New Development Area Planning and Engineering Study - Investigation
Photomontage 01 - View from Proposed Heritage Trail

SCALE	N.T.S.	DATE	AUG 2016
CHECK	AM	DRAWN	LW
JOB No.	60222570	FIGURE	FIGURE 11.57b
		REV	



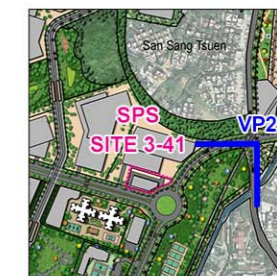
Existing Baseline Conditions



Proposed HSK Development without Mitigation at Day 1 (Operation Phase)

Note:

The photomontages illustrating views at Day 1 represent the commencement of Operation Phase for the entire HSK development, with and without mitigation measures. The photomontages illustrating views at Year 10 of Operation Phase identify anticipated changes in mitigation measures from the Day 1 scenario.

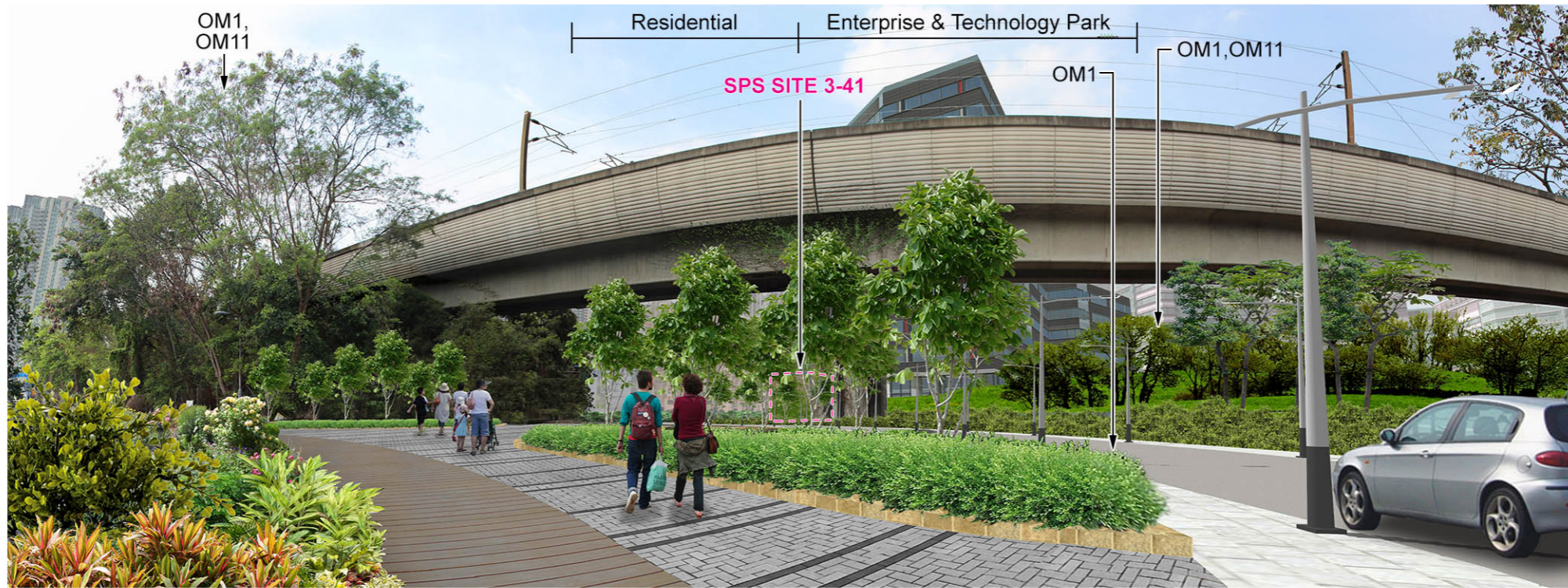


KEY PLAN

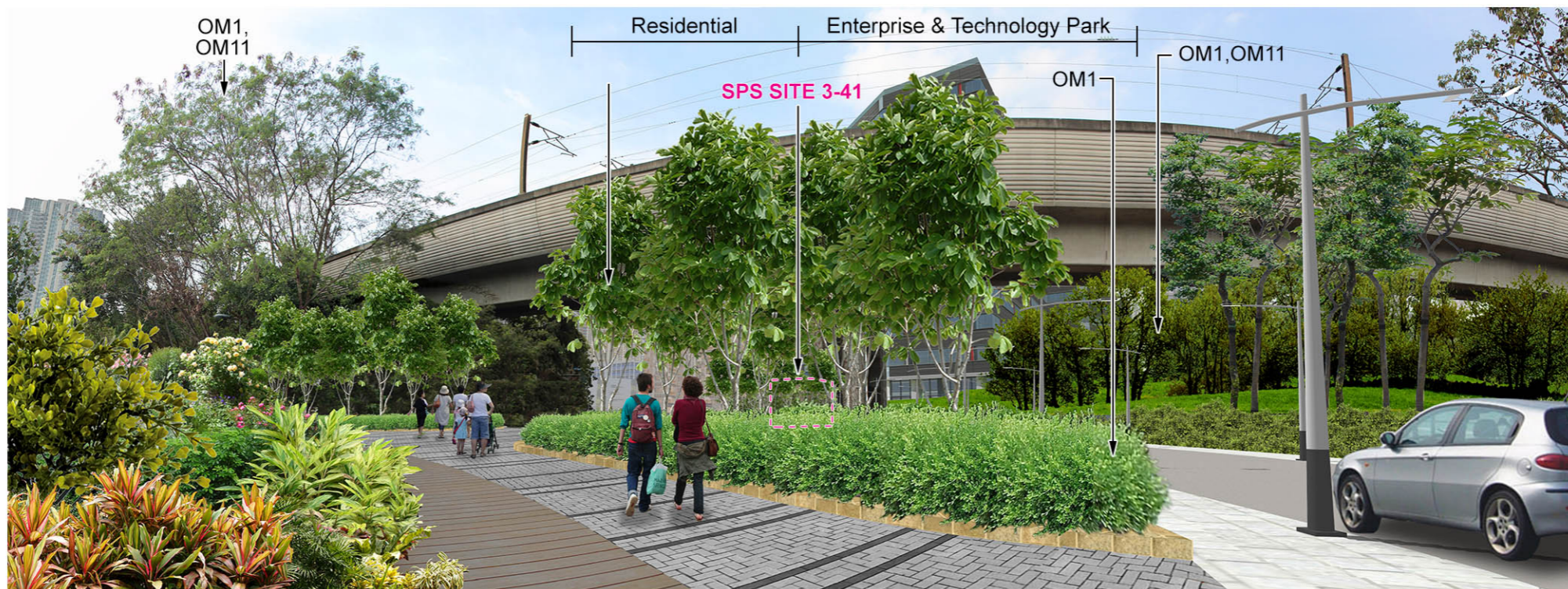


Agreement No. CE 2/2011 (CE)
 Hung Shui Kiu New Development Area Planning and Engineering Study - Investigation
Photomontage 02 - View from San Lee Uk Tsuen Nullah

SCALE	N.T.S.	DATE	JUL 2016
CHECK	AM	DRAWN	LW
JOB No.	60222570	FIGURE	11.58a
		REV	



Proposed HSK Development with Mitigation at Day 1 (Operation Phase)



Proposed HSK Development with Mitigation at Year 10 (Operation Phase)

Mitigation Measures

Construction Mitigation (CM)

- CM1 - Minimised construction area and contractor's temporary works areas
- CM3 - Protection of existing trees
- CM4 - Transplantation of existing trees where practical
- CM5 - Control of night-time lighting
- CM6 - Construction of decorative hoarding around construction works

- CM7 - Reduction of construction period to practical minimum
- CM10 - Advance screen planting
- CM11 - Minimise disturbance footprints

Operation Mitigation (OM)

- OM1 - Compensatory tree planting where practical
- OM2 - Sensitive design of above-ground structures
- OM5 - Visual softening via soft landscape elements
- OM8 - Sensitive and chromatic treatment of architectural facades

- OM11 - Tree planting to site boundaries
- OM12 - Night time lighting
- OM13 - Green roofs and vertical greening

Note: CM1 - CM14, and other mitigation measures not shown in these figures, are considered best practices throughout the entire NDA and should be implemented to the fullest extent possible.

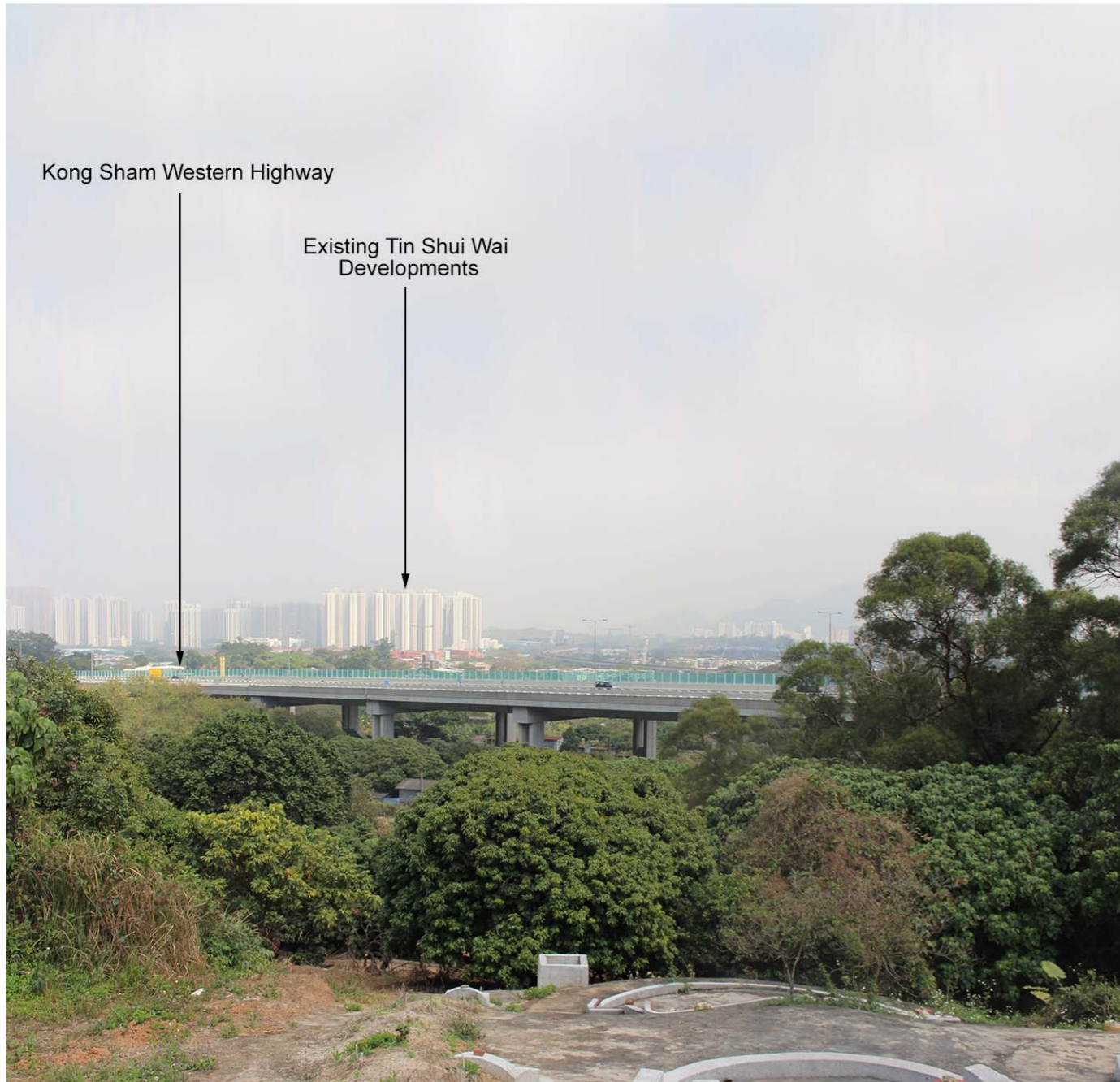


KEY PLAN

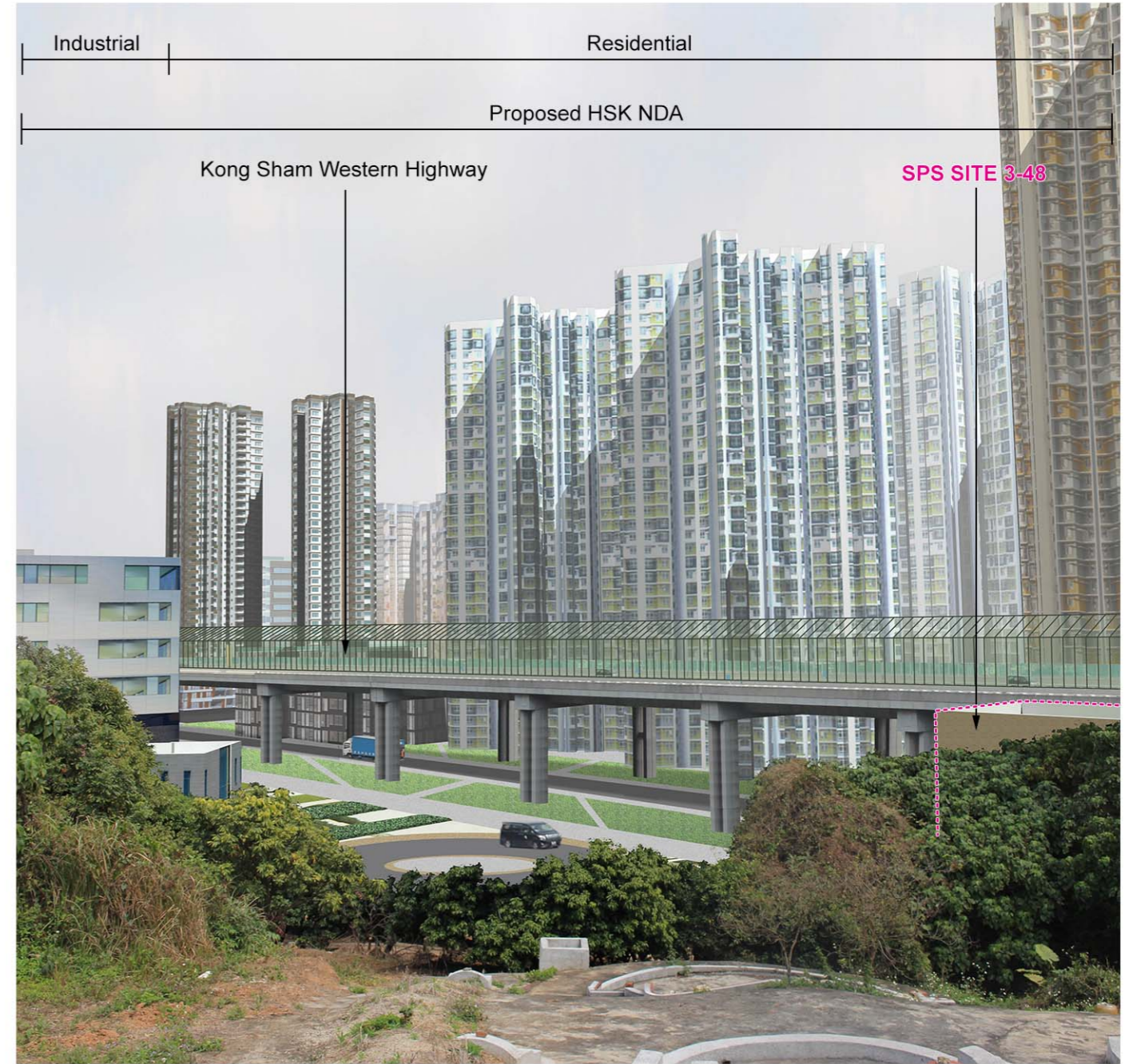


Agreement No. CE 2/2011 (CE)
 Hung Shui Kiu New Development Area Planning and Engineering Study - Investigation
Photomontage 02 - View from San Lee Uk Tsuen Nullah

SCALE	N.T.S.	DATE	AUG 2016
CHECK	AM	DRAWN	LW
JOB No.	60222570	FIGURE	FIGURE 11.58b
		REV	



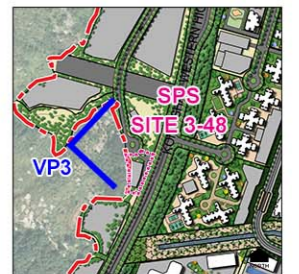
Existing Baseline Conditions in February 2016



Proposed HSK Development with Mitigation at Day 1 (Operation Phase)

Note:

The photomontages illustrating views at Day 1 represent the commencement of Operation Phase for the entire HSK development, with and without mitigation measures. The photomontages illustrating views at Year 10 of Operation Phase identify anticipated changes in mitigation measures from the Day 1 scenario.

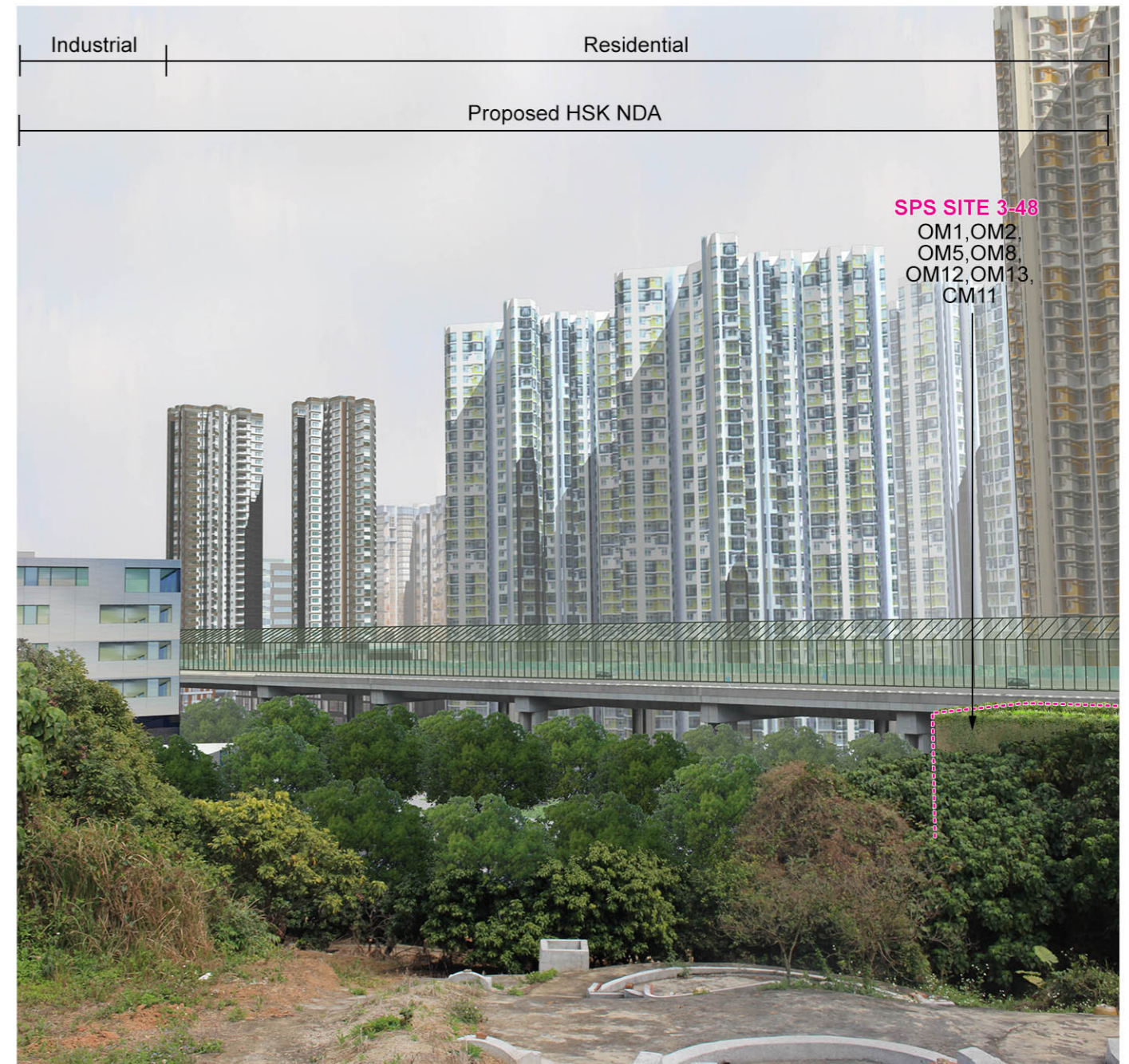
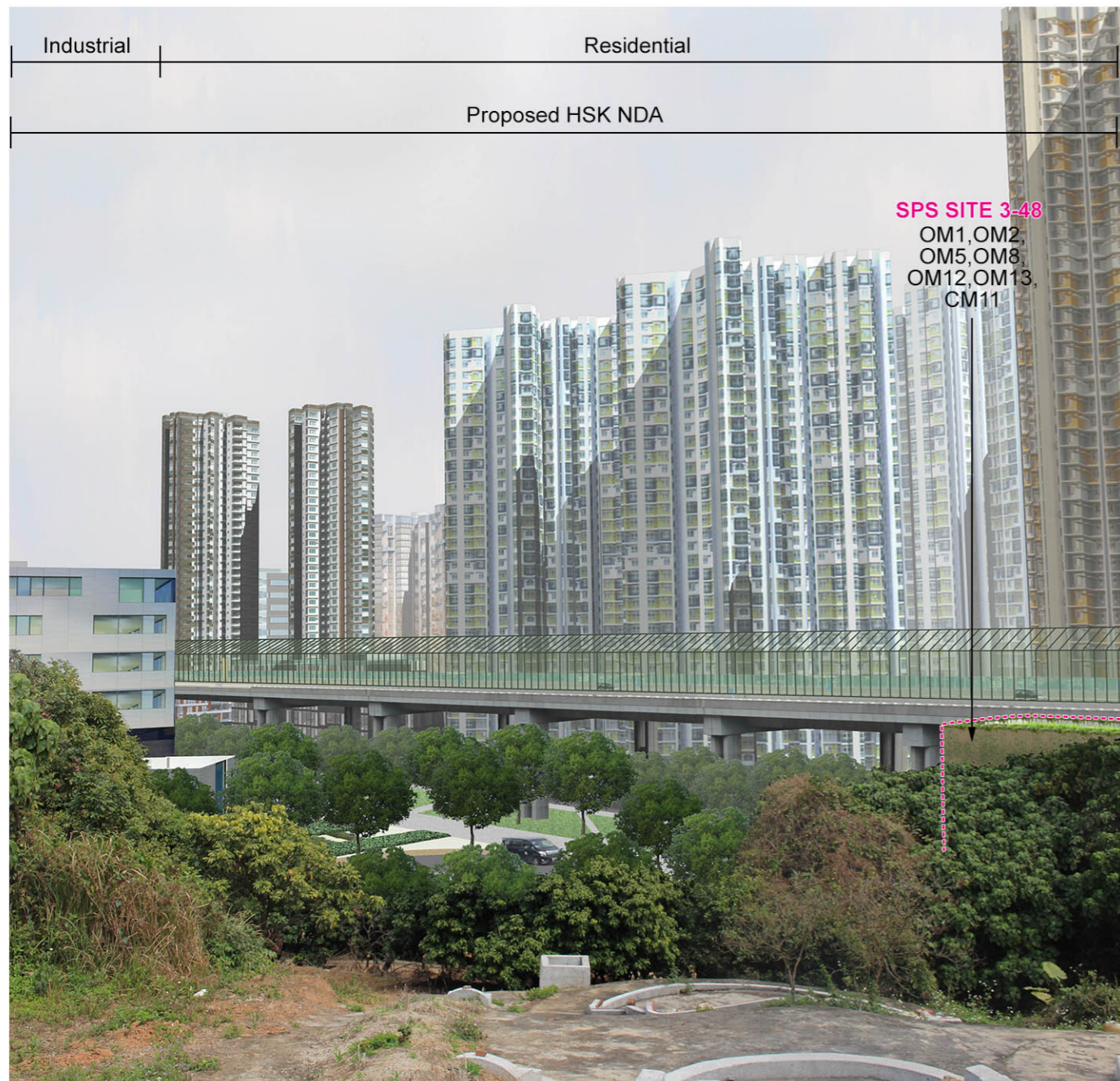


KEY PLAN



Agreement No. CE 2/2011 (CE)
 Hung Shui Kiu New Development Area Planning and Engineering Study - Investigation
Photomontage 03 - View from Yuen Tau Shan Hiking Trail

SCALE	N.T.S.	DATE	JUL 2016
CHECK	AM	DRAWN	LW
JOB No.	60222570	FIGURE	11.59a
		REV	



Proposed HSK Development with Mitigation at Day 1 (Operation Phase)

Proposed HSK Development with Mitigation at Year 10 (Operation Phase)

Mitigation Measures

Construction Mitigation (CM)

- CM1 - Minimised construction area and contractor's temporary works areas
- CM3 - Protection of existing trees
- CM4 - Transplantation of existing trees where practical
- CM5 - Control of night-time lighting
- CM6 - Construction of decorative hoarding around construction works

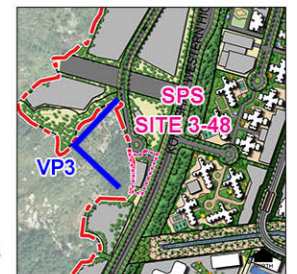
- CM7 - Reduction of construction period to practical minimum
- CM10 - Advance screen planting
- CM11 - Minimise disturbance footprints

Operation Mitigation (OM)

- OM1 - Compensatory tree planting where practical
- OM2 - Sensitive design of above-ground structures
- OM5 - Visual softening via soft landscape elements
- OM8 - Sensitive and chromatic treatment of architectural facades

- OM11 - Tree planting to site boundaries
- OM12 - Night time lighting
- OM13 - Green roofs and vertical greening

Note: CM1 - CM14, and other mitigation measures not shown in these figures, are considered best practices throughout the entire NDA and should be implemented to the fullest extent possible.



KEY PLAN

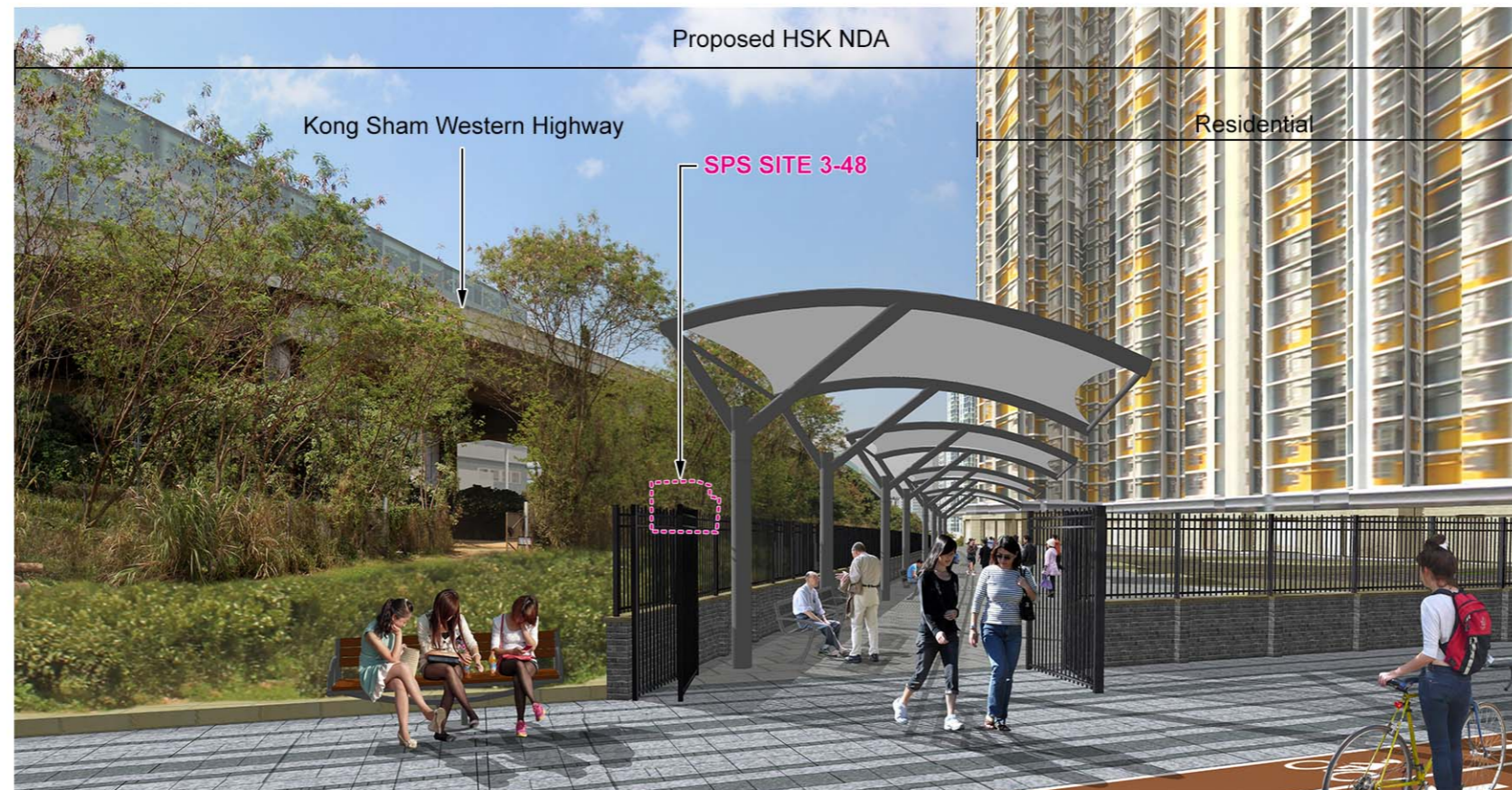


Agreement No. CE 2/2011 (CE)
 Hung Shui Kiu New Development Area Planning and Engineering Study - Investigation
Photomontage 03 - View from Yuen Tau Shan Hiking Trail

SCALE	N.T.S.	DATE	AUG 2016
CHECK	AM	DRAWN	LW
JOB No.	60222570	FIGURE	11.59b
		REV	



Existing Baseline Conditions



Proposed HSK Development without Mitigation at Day 1 (Operation Phase)

Note:
 The photomontages illustrating views at Day 1 represent the commencement of Operation Phase for the entire HSK development, with and without mitigation measures.
 The photomontages illustrating views at Year 10 of Operation Phase identify anticipated changes in mitigation measures from the Day 1 scenario.



KEY PLAN



Agreement No. CE 2/2011 (CE)
 Hung Shui Kiu New Development Area Planning and Engineering Study - Investigation
Photomontage 04 - View from San Sang San Tsuen

SCALE	N.T.S.	DATE	AUG 2016
CHECK	AM	DRAWN	LW
JOB No.	60222570	FIGURE	11.60a
		REV	



Proposed HSK Development with Mitigation at Day 1 (Operation Phase)



Proposed HSK Development with Mitigation at Year 10 (Operation Phase)

Mitigation Measures

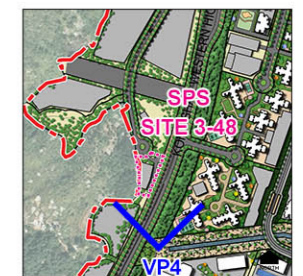
Construction Mitigation (CM)

- CM1 - Minimised construction area and contractor's temporary works areas
- CM3 - Protection of existing trees
- CM4 - Transplantation of existing trees where practical
- CM5 - Control of night-time lighting
- CM6 - Construction of decorative hoarding around construction works
- CM7 - Reduction of construction period to practical minimum
- CM10 - Advance screen planting
- CM11 - Minimise disturbance footprints

Operation Mitigation (OM)

- OM1 - Compensatory tree planting where practical
- OM2 - Sensitive design of above-ground structures
- OM5 - Visual softening via soft landscape elements
- OM8 - Sensitive and chromatic treatment of architectural facades
- OM11 - Tree planting to site boundaries
- OM12 - Night time lighting
- OM13 - Green roofs and vertical greening

Note: CM1 - CM14, and other mitigation measures not shown in these figures, are considered best practices throughout the entire NDA and should be implemented to the fullest extent possible.

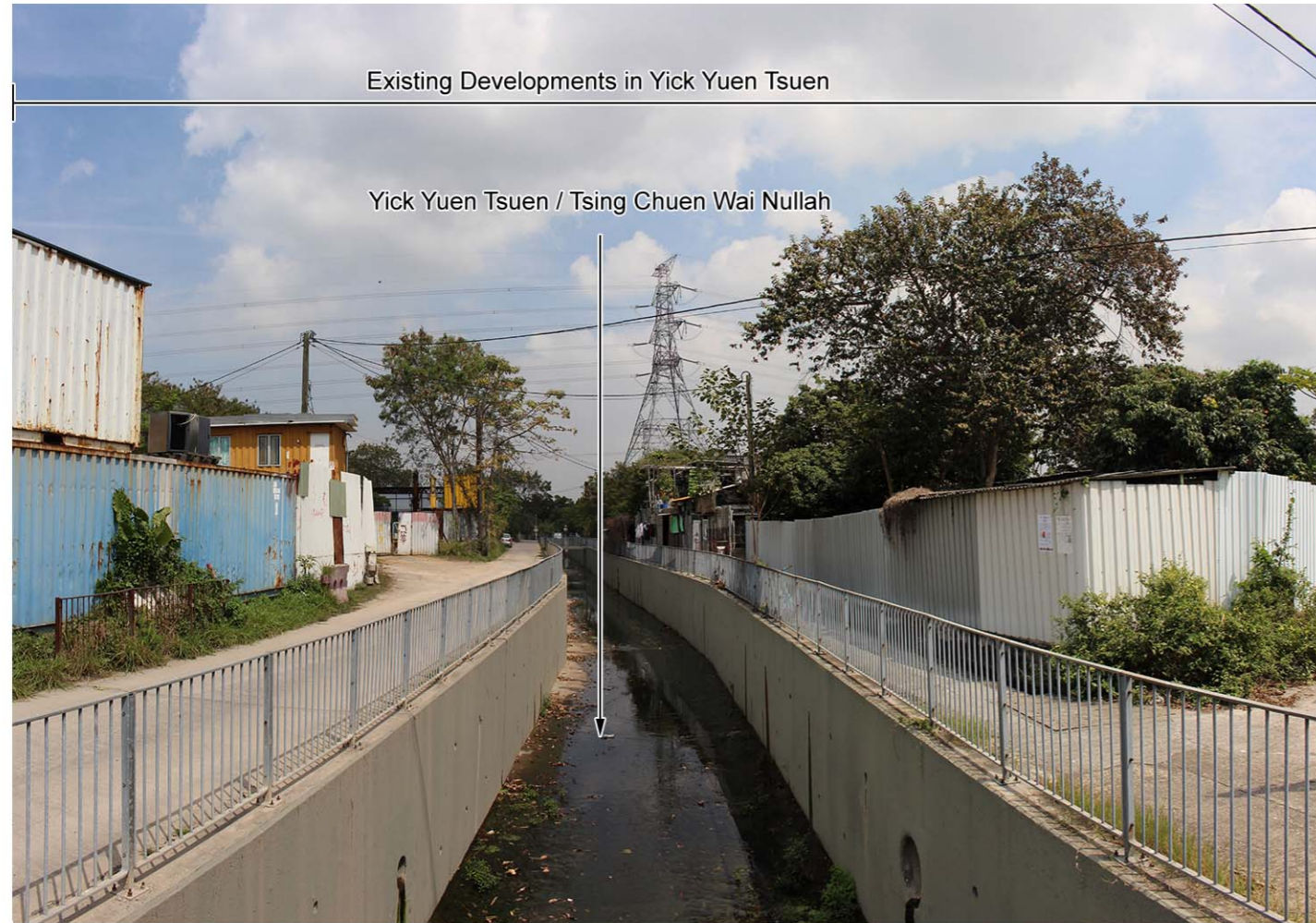


KEY PLAN



Agreement No. CE 2/2011 (CE)
 Hung Shui Kiu New Development Area Planning and Engineering Study - Investigation
Photomontage 04 - View from San Sang San Tsuen

SCALE	N.T.S.	DATE	AUG 2016
CHECK	AM	DRAWN	LW
JOB No.	60222570	FIGURE	11.60b
		REV	



Existing Baseline Conditions in February 2016



Proposed HSK Development with Mitigation at Day 1 (Operation Phase)

Note:
 The photomontages illustrating views at Day 1 represent the commencement of Operation Phase for the entire HSK development, with and without mitigation measures.
 The photomontages illustrating views at Year 10 of Operation Phase identify anticipated changes in mitigation measures from the Day 1 scenario.



KEY PLAN



Agreement No. CE 2/2011 (CE)
 Hung Shui Kiu New Development Area Planning and Engineering Study - Investigation
Photomontage 05 - View from Tsing Chuen Wai Nullah

SCALE	N.T.S.	DATE	AUG 2016
CHECK	AM	DRAWN	LW
JOB No.	60222570	FIGURE	11.61a
		REV	



Proposed HSK Development with Mitigation at Day 1 (Operation Phase)



Proposed HSK Development with Mitigation at Year 10 (Operation Phase)

Mitigation Measures

Construction Mitigation (CM)

- CM1 - Minimised construction area and contractor's temporary works areas
- CM3 - Protection of existing trees
- CM4 - Transplantation of existing trees where practical
- CM5 - Control of night-time lighting
- CM6 - Construction of decorative hoarding around construction works

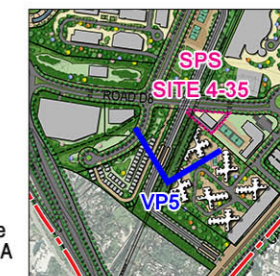
- CM7 - Reduction of construction period to practical minimum
- CM10 - Advance screen planting
- CM11 - Minimise disturbance footprints

Operation Mitigation (OM)

- OM1 - Compensatory tree planting where practical
- OM2 - Sensitive design of above-ground structures
- OM5 - Visual softening via soft landscape elements
- OM8 - Sensitive and chromatic treatment of architectural facades

- OM11 - Tree planting to site boundaries
- OM12 - Night time lighting
- OM13 - Green roofs and vertical greening

Note: CM1 - CM14, and other mitigation measures not shown in these figures, are considered best practices throughout the entire NDA and should be implemented to the fullest extent possible.



KEY PLAN



Agreement No. CE 2/2011 (CE)
 Hung Shui Kiu New Development Area Planning and Engineering Study - Investigation
Photomontage 05 - View from Tsing Chuen Wai Nullah

SCALE	N.T.S.	DATE	AUG 2016
CHECK	AM	DRAWN	LW
JOB No.	60222570	FIGURE	11.61b
		REV	