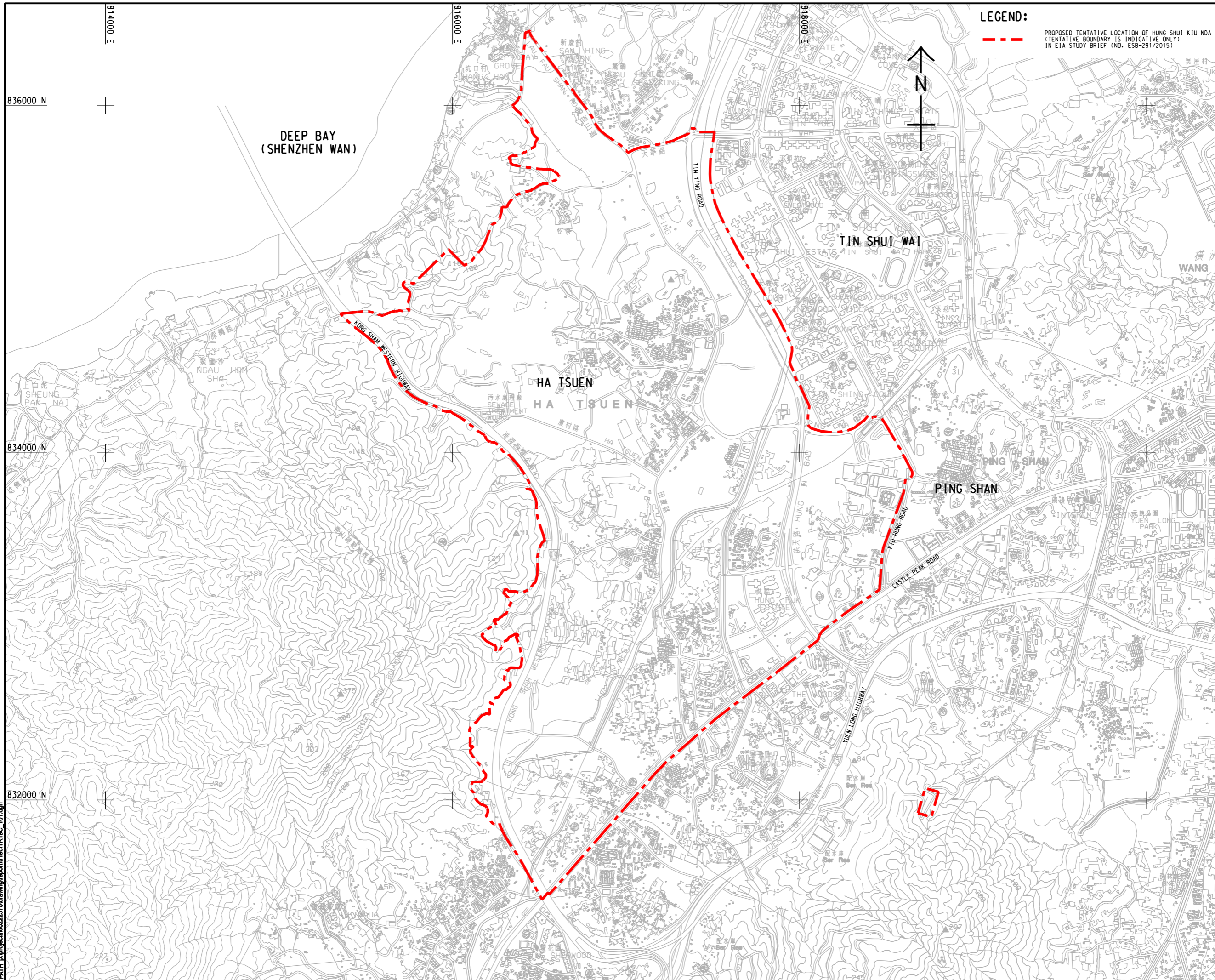


Pld File by: ANHL
 PATH: E:\projects\60222570\drawing\report\19c\19c_101.dgn
 Project Management Initials: Designer: Checked: Approved: ISO A1 594mm x 841mm



LEGEND:
 - - - - - PROPOSED TENTATIVE LOCATION OF HUNG SHUI KIU NDA
 (TENTATIVE BOUNDARY IS INDICATIVE ONLY)
 IN EIA STUDY BRIEF (NO. ES8-291/2015)

AECOM

PROJECT
 HUNG SHUI KIU NEW DEVELOPMENT AREA PLANNING AND ENGINEERING STUDY - INVESTIGATION

CLIENT
 CEDD
 土木工程拓展署
 Civil Engineering and Development Department

CONSULTANT
 AECOM Asia Company Ltd.
 www.aecom.com

SUB-CONSULTANTS
 规划署
 Planning Department

ISSUE/REVISION

NO.	DATE	DESCRIPTION	CHK.

STATUS
 现状

SCALE
 1:20000

DIMENSION UNIT
 METRES

KEY PLAN
 索引图

PROJECT NO.
 60222570

AGREEMENT NO.
 CE2/2011 (CE)

SHEET TITLE
 LOCATION PLAN

SHEET NUMBER
 60222570/TR19C/FIGURE 1.1

This drawing has been prepared for the use of AECOM's client. It may not be used, modified, reproduced or relied upon by third parties, except as agreed by AECOM or as required by law. AECOM accepts no responsibility, and denies any liability whatsoever, for any party that uses or relies on this drawing without AECOM's express written consent. Do not scale this document. All measurements must be obtained from the stated dimensions.