

A

B




C

D

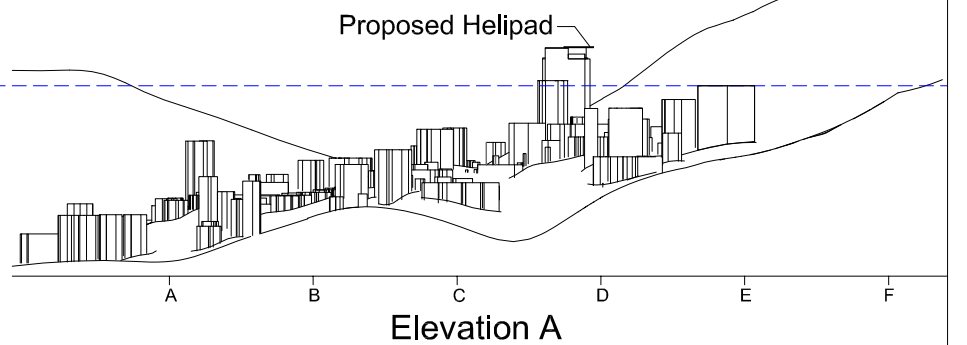
E

F

Legend

-  Proposed Helipad (The Project)
-  Buildings with NSRs at the mPD level of Noise Contour Plot
- 85 - Noise Contour (Lmax, dB(A))
-  Flight Sector (Approach and Departure Zone)
- - - - Country Park Boundary

 Noise Contour at +246.9mPD



Environmental Impact Assessment for A Rooftop Helipad at the Proposed New Block at Queen Mary Hospital

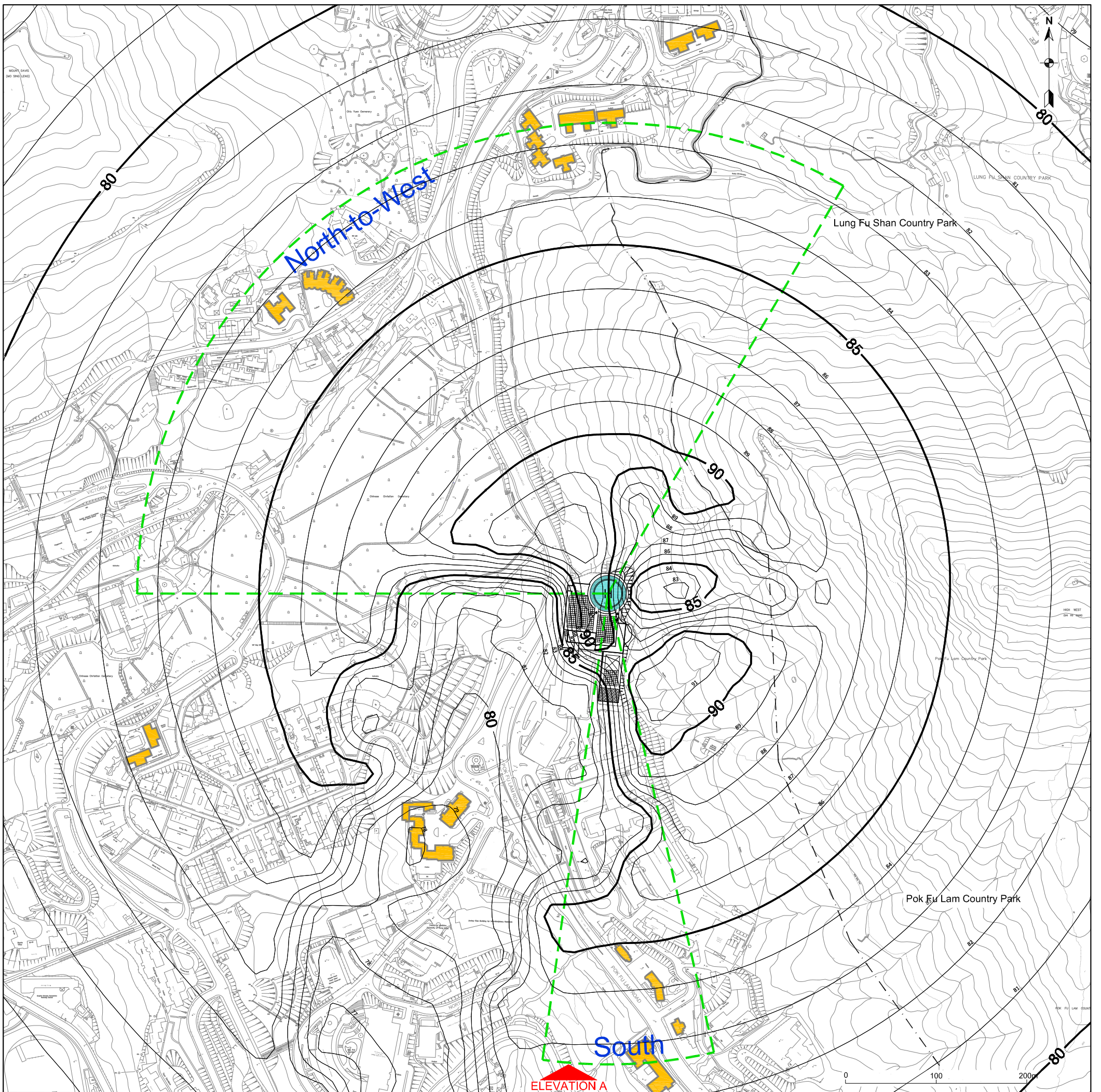
Helicopter Noise Contour at +246.9mPD Level (Mitigated Scenario)

Figure 4.7a

Scale: As Shown




Date: October 2016

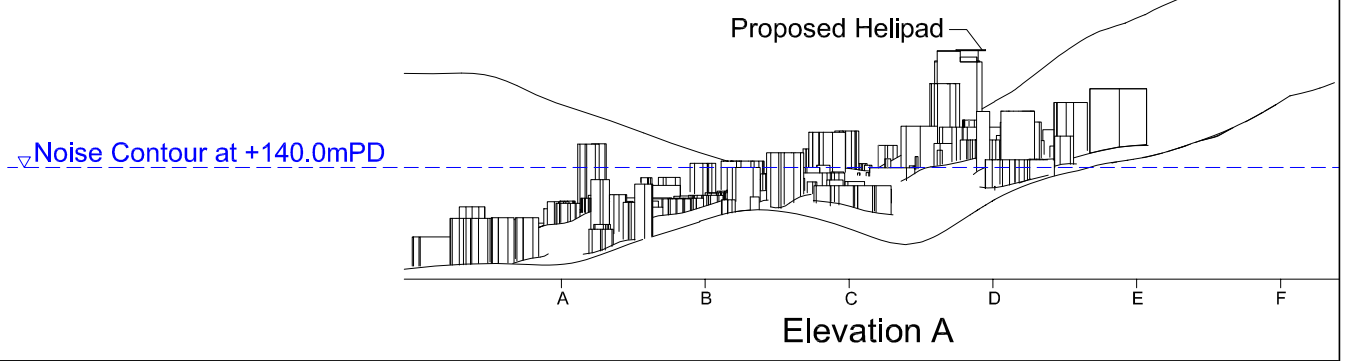
Rev.: 1

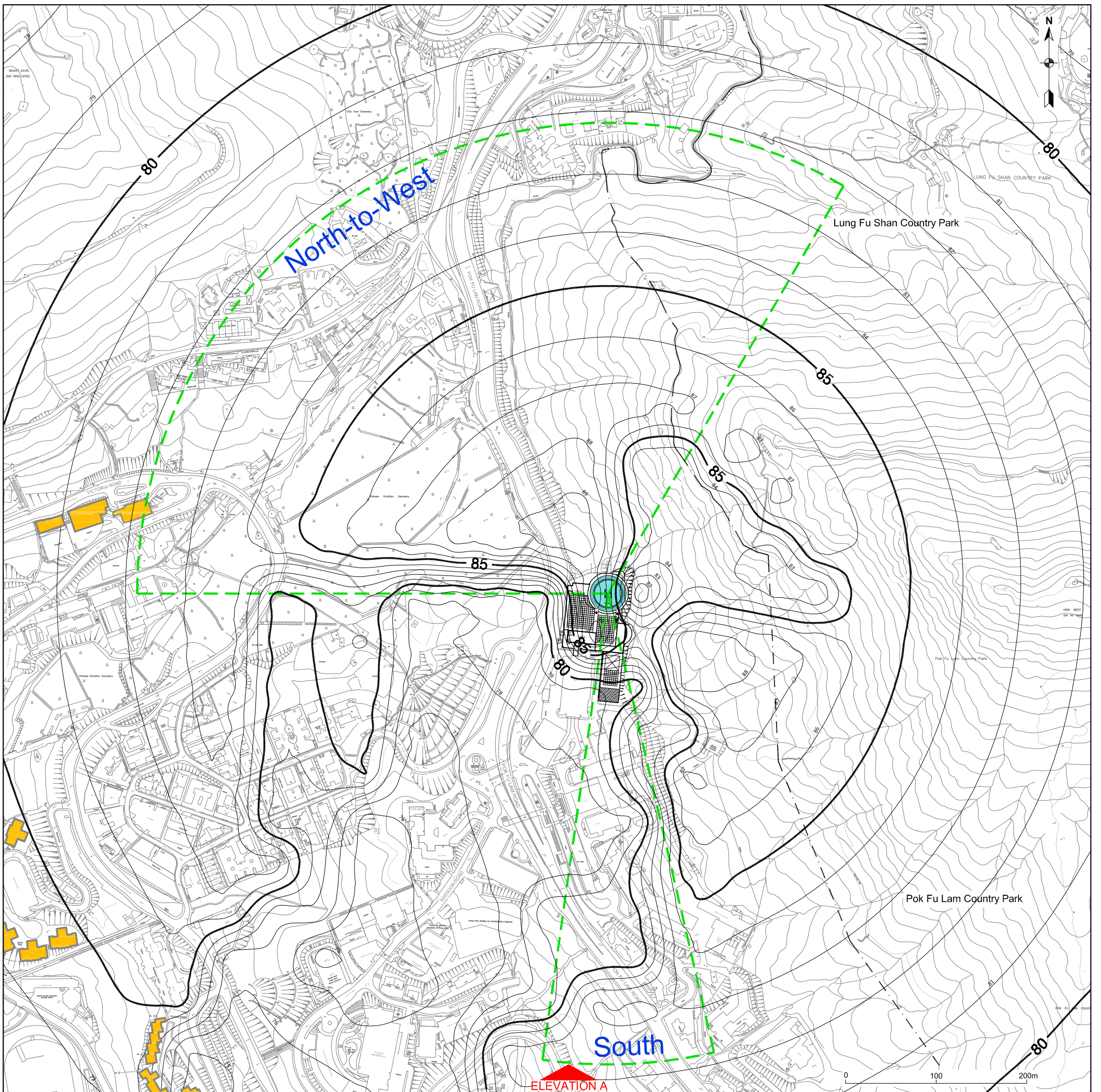


A B C D E F

Legend

-  Proposed Helipad (The Project)
-  Buildings with NSRs at the mPD level of Noise Contour Plot
- 85 - Noise Contour (Lmax, dB(A))
-  Flight Sector (Approach and Departure Zone)
- - - - Country Park Boundary





A

B




C

D

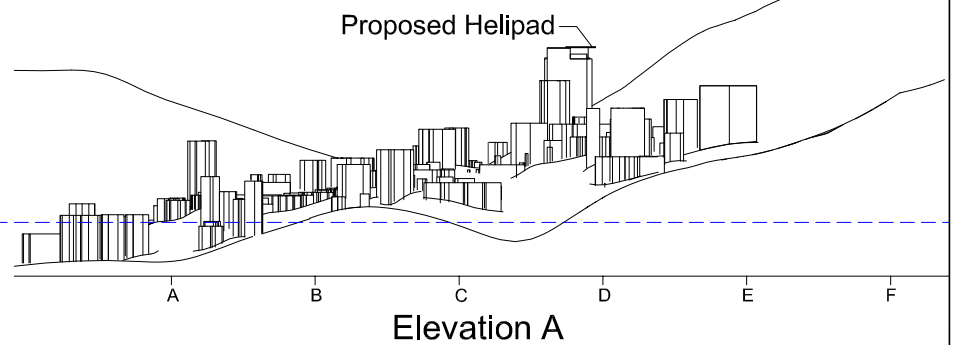
E

F

Legend

-  Proposed Helipad (The Project)
-  Buildings with NSRs at the mPD level of Noise Contour Plot
- 85 - Noise Contour (Lmax, dB(A))
-  Flight Sector (Approach and Departure Zone)
- - - - Country Park Boundary

 Noise Contour at +61.5mPD



Environmental Impact Assessment for A Rooftop Helipad at the Proposed New Block at Queen Mary Hospital

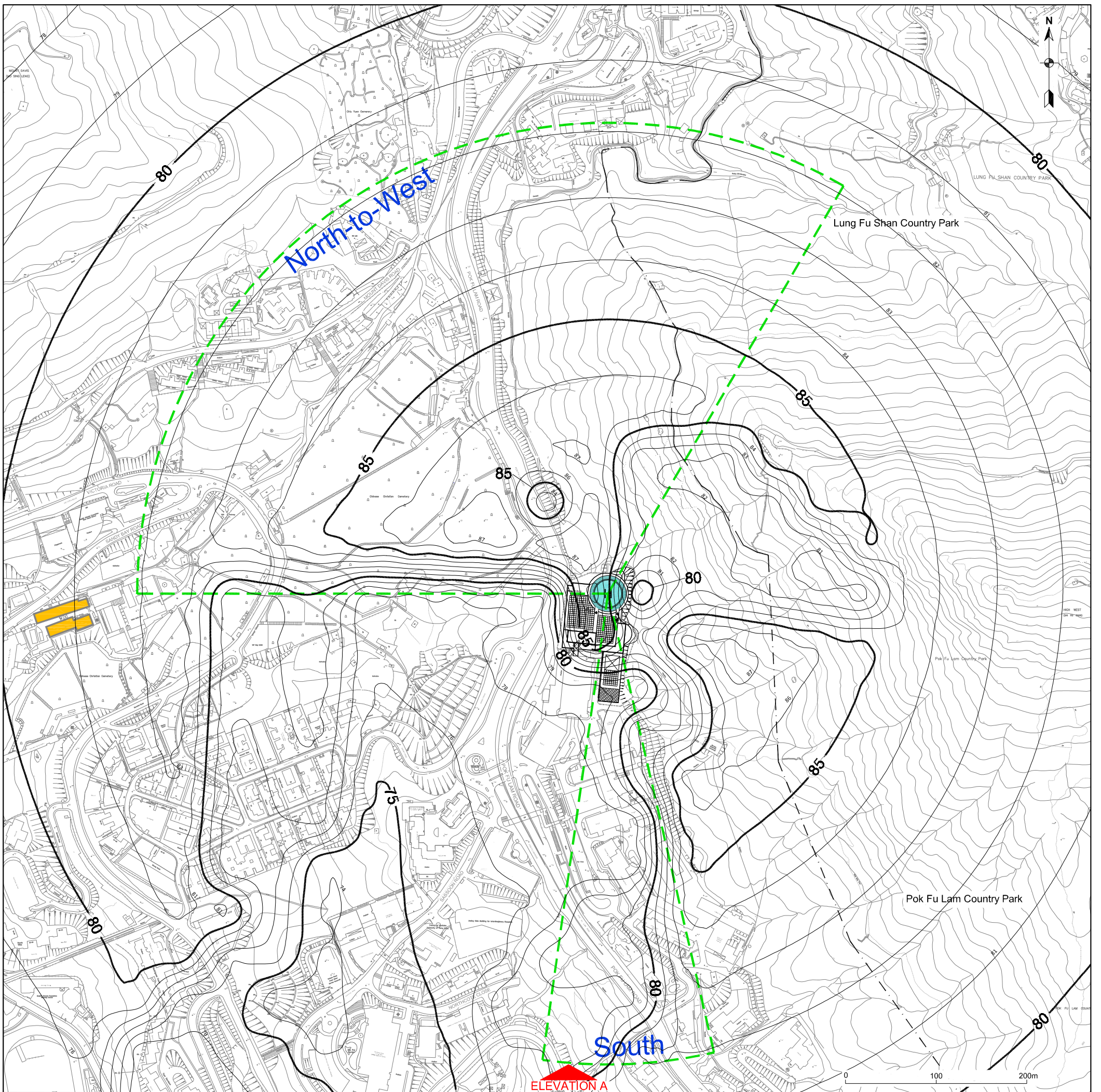
Helicopter Noise Contour at +61.5mPD Level (Mitigated Scenario)

Figure 4.7c

Scale: As Shown

Date: October 2016

Rev.: 1



A

B





C

D

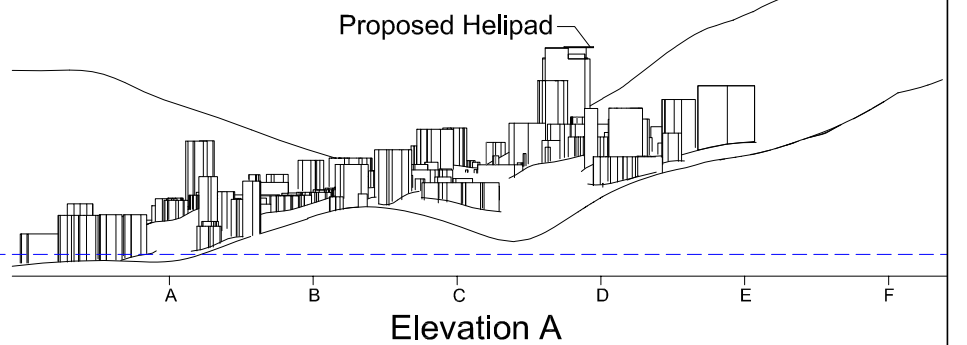
E

F

Legend

-  Proposed Helipad (The Project)
-  Buildings with NSRs at the mPD level of Noise Contour Plot
- 85 - Noise Contour (Lmax, dB(A))
-  Flight Sector (Approach and Departure Zone)
-  Country Park Boundary

Noise Contour at +18.3mPD



Environmental Impact Assessment for A Rooftop Helipad at the Proposed New Block at Queen Mary Hospital

Helicopter Noise Contour at +18.3mPD Level (Mitigated Scenario)

Figure 4.7d

Scale: As Shown

Date: October 2016

Rev.: 1