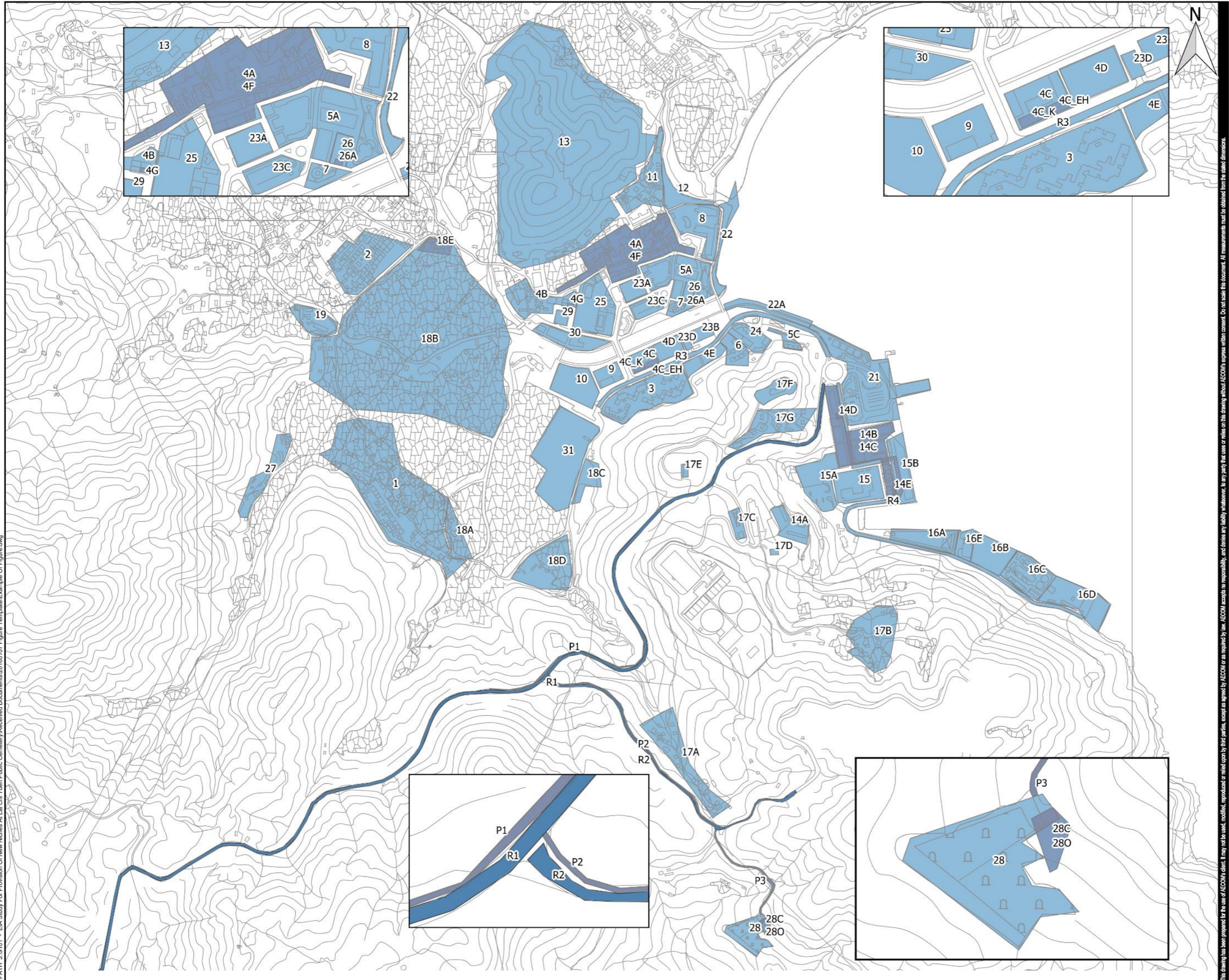

APPENDIX 5.1

Population Considered in this Study

Plot File by: Hccc 30/08/2016
 PATH: J:\9101 - EIA Study For Provision Of New Niches At Lai Chi Yuen Public Cemetery\Received Documents\20160107 Figure Template\Example Of Figure.dwg
 Project Management Initials: Designer: Checked: Approved: ISO A1 594mm x 841mm



PROJECT
 項目
MUI WO LAI CHI YUEN CEMETERY EXTENSION

CLIENT
 業主
 Food and Environmental Hygiene Department
 食物環境衛生署

CONSULTANT
 工程顧問公司
 AECOM Asia Company Ltd.
 www.aecom.com

SUB-CONSULTANTS
 分判工程顧問公司
 BMT As a Pacific
 "Where will our knowledge take you?"

ISSUE/REVISION
修訂

IR	DATE	DESCRIPTION	CHK
修訂	日期	內容摘要	核對

STATUS
 階段
 PRELIMINARY
SCALE
 比例
 A3 1:7,500
DIMENSION UNIT
 尺寸單位
 METRES

KEY PLAN
 索引圖
 Population Polygon (This Study)
 Population Polygon

PROJECT NO.
 項目編號
 60453162
CONTRACT NO.
 合約編號
 CPM301_02/14

SHEET TITLE
 圖紙名稱
 Population considered in this study

SHEET NUMBER
 圖紙編號

This drawing has been prepared for the use of AECOM's client. It may not be used, modified, reproduced or relied upon by third parties, except as agreed by AECOM or as required by law. AECOM accepts no responsibility, and denies any liability, in connection with this drawing without AECOM's express written consent. Do not scale this document. All measurements must be obtained from the master dimension.

ID	Caption	Building Height(m)	Indoor Fraction	Population (Base)	Population (Construction)	Population (Operation)	TM1	TM2	TM3	TM4	TM5	Vulnerability	Remarks
1	Luk Tei Tong Village	6	0.9	870	857	870	0.5	0.7	0.7	1	0.7	Healthy	Population based on Previous Report with annual growth rate
2	Tai Tei Tong Village & Sun Lung Wai	6	0.9	655	646	655	0.5	0.7	0.7	1	0.7	Healthy	Population based on Previous Report with annual growth rate
3	Ngan Wan Estate	42	0.9	1400	1380	1400	0.5	0.7	0.7	1	0.7	Healthy	2015 Data from Housing Authority, 4 blocks, 400 flats and 1300 authorised population. Assume annual population growth of 1.5%.
4A	Chung Hau	6	0.9	404	398	404	0.5	0.7	0.7	1	0.7	Healthy	Population based on Previous Report with annual growth rate (25% is split to commercial - ID: 4F)
4B	Ling Tsui Tau	3	0.9	216	213	216	0.5	0.7	0.7	1	0.7	Healthy	Population based on Previous Report with annual growth rate
4C	Silver View Center	9	0.9	183	183	183	0.5	0.7	0.7	1	0.7	Healthy	Conservative estimation (20 blocks with 3 storeys) Including: - Residential (assume 43 units, ave. household size of 2.7) - Resort (24 rooms, Block 17-20 & G/F, Block 4) - Restaurant (G/F, Block 17-20)
4C_EH	Silver View Center for the Aged	3	0.9	42	42	42	0.5	0.7	0.7	1	0.7	Vulnerable	Silver View Centre for the Aged (max capacity : 32, Add.: G/F, Block 5-8) Assume 10 Staff
4C_K	Little Lantau Montessori Kindergarten	3	0.9	35	35	35	1	0	0	0	0	Vulnerable	No. of pupils and staff estimated from the data sheet from Education Bureau
4D	Riverwalk	9	0.9	137	135	137	0.5	0.7	0.7	1	0.7	Healthy	50 flats for rental
4E	Housing Authority Ngan Kwong Wan Road East Development	49	0.9	494	487	494	0.5	0.7	0.7	1	0.7	Healthy	new home ownership scheme 180 flats Foundation commence: 2014/2015 Building Completion: 2017/2018
4F	Chung Hau (Commercial)	3	0.1	104	101	104	0.5	1	1	0	1	Healthy	Conservative Estimation (25% of ID 4A in year 2018, with 3% annual growth rate for commercial)
4G	Lick Hang Kindergarten (Leafy Branch)	6	0.9	30	30	30	1	0	0	0	0	Vulnerable	No. of pupils and staff estimated from the data sheet from Education Bureau
5A	Future Civic Square	1	0.1	2000	2000	2000	0.05	0.5	1	0.1	1	Healthy	Proposed Mui Wi Improvement Works - Civic Square Maximum capacity from CEDD
5C	Yu Kwong Tsuen	3	0.9	31	20	31	0.5	0.7	0.7	1	0.7	Healthy	site survey (Nov 2015)
6	Regent Villa	2	0.9	50	48	50	0.5	0.7	0.7	1	0.7	Healthy	9 blocks x 2 storeys Assume average household size of 3.08
7	Mui Wo River Silver Garden	1	0	45	45	45	0.5	1	1	0	1	Healthy	30 people on playground as per site survey (Nov 2015). Population of 45 is considered conservatively.
8	Silvermine Bay Beach Hotel	3	0.9	274	274	274	0.5	0.9	0.9	1	0.9	Healthy	adopted from previous study with modification on % of occupancy in holiday
9	Mui Wo Fire Station	3	0.9	30	30	30	1	1	1	1	1	Healthy	conservative assumption

ID	Caption	Building Height(m)	Indoor Fraction	Population (Base)	Population (Construction)	Population (Operation)	TM1	TM2	TM3	TM4	TM5	Vulnerability	Remarks
10	Housing Authority Ngan Kwong Wan Road West Development	55	0.9	1372	1352	1372	0.5	0.7	0.7	1	0.7	Healthy	new home ownership scheme (500 flats) Foundation commence: 2014/2015 Building Completion: 2017/2018
11	Chung Hau	1	0.9	137	135	137	0.5	0.7	0.7	1	0.7	Healthy	There are 50 houses per GeoInfo Map by HK Gov. (59 - 9 units).
12	Open Space	1	0	14	14	14	0.7	1	1	0	1	Healthy	Adopted from previous study
13	Country Side (Butterfly Hill)	1	0	9	9	9	1	1	1	0	1	Healthy	Adopted from previous study
14A	Round Table	3	0.9	137	135	137	0.5	0.7	0.7	1	0.7	Healthy	Population based on Previous Report with annual growth rate
14B	Residential Site	19	0.9	1224	1205	1224	0.5	0.7	0.7	1	0.7	Healthy	75% of 14B from previous study with annual growth rate
14C	Commercial Site	3	0.1	653	653	653	0.3655	0.531	0.531	0	1	Healthy	Conservative estimation based on 25% of area 14B adopted from previous study. Added cemetery visitors in TM5
14D	Mui Wo OWLS School	9	0.9	40	40	40	1	0	0	0	0	Vulnerable	No. of pupils and staff estimated from the data sheet from Education Bureau
14E	Kind Hing Trinity International Kindergarten	3	0.9	60	60	60	1	0	0	0	0	Vulnerable	Conservative estimate from site survey in 2016
15	Dis-used School	3	0.8	1	1	1	1	1	1	1	1	Healthy	Heung Yee Kuk Southern District Secondary School has stopped service since year 2007
15A	Car Park	1	0	6	6	6	1	1	1	1	1	Healthy	Approx. 60 parking space, conservatively assume 1/10 of driver will be present in the car park at the same time
15B	Car Park	1	0	7	7	7	1	1	1	1	1	Healthy	Approx. 70 parking space, conservatively assume 1/10 of driver will be present in the car park at the same time
16A	Bus Depot	3	0.1	20	20	20	1	1	1	0	1	Healthy	less than 20ppl. by site survey (Nov 2015)
16B	Concrete Plant	3	0.1	30	30	30	1	1	1	0	1	Healthy	conservative estimate by site survey (Nov 2015)
16C	Sewage Treatment Works	3	0.1	50	50	50	1	1	1	1	1	Healthy	Adopted from Previous Report with conservative estimate on Time Periods population variation
16D	Waste Transfer Station	3	0.9	30	30	30	1	1	1	1	1	Healthy	conservative estimate
16E	Pier	1	0	10	10	10	1	1	0	0	0	Healthy	Estimated from site survey (Nov 2015)
17A	Lai Chi Yuen Tsuen	3	0.9	79	80	79	0.5	0.7	0.7	1	0.7	Healthy	Population based on Previous Report with annual growth rate
17B	Wan Tsai	3	0.9	39	39	39	0.5	0.7	0.7	1	0.7	Healthy	Population based on Previous Report with annual growth rate
17C	EMSD Vehicle Servicing Depot	3	0.5	10	10	10	1	0.1	0.1	0	0.1	Healthy	Conservative estimate based on site survey (year 2015 and 2016)
17D	Telephone Exchange Building	3	1	1	1	1	1	1	1	1	1	Healthy	Unmanned Telephone Exchange Building based on site survey in 2015 and 2016. Conservatively assume 1 staff in the building to account for the occasional appearance of staff on site.
17E	WSD Staff Quarters	3	1	30	30	30	0.5	0.7	0.7	1	0.7	Healthy	Data provided by WSD
17F	Lantau South (Mui Wo) Police Station	15	0.9	40	40	40	1	1	1	1	1	Healthy	Site survey (Nov 2016)

ID	Caption	Building Height(m)	Indoor Fraction	Population (Base)	Population (Construction)	Population (Operation)	TM1	TM2	TM3	TM4	TM5	Vulnerability	Remarks
17G	Village House near Fu Kong Shan	15	0.9	27	27	27	0.5	0.7	0.7	1	0.7	Healthy	less than 10 village houses based on site survey at Nov 2016
18A	Mui Wo Fringe	6	0.9	11	11	11	0.5	0.7	0.7	1	0.7	Healthy	Population based on Previous Report with annual growth rate
18B	Ma Po Village	2	0.9	351	346	351	0.5	0.7	0.7	1	0.7	Healthy	Population based on Previous Report with annual growth rate
18C	Lantau EcoFarm	1	0	50	50	50	0.05	1	1	0	1	Healthy	Based on Site survey (Nov 2016).
18D	Open Storage	3	0	10	10	10	1	0	0	0	0	Healthy	Site survey (Nov 2016)
18E	Kindergarten	6	0.8	65	65	65	1	0	0	0	0	Vulnerable	Lick Hang Kindergarten (Lower and Upper KG - approx. 50 including staff) and Little Lamb Kindergarten (approx. 15 including staff)
19	Mui Wo School	2	0.8	180	180	180	1	0.3	0.3	0	0.3	Vulnerable	Adopted from previous report
21	Mui Wo Ferry Pier, Bus Terminus and Open-Air/ Restaurant	3	0.1	1149	1149	1149	0.3986	0.7972	0.7972	0.3	1	Healthy	Adopted from previous study with 3% annual increase. Additional population in TM5 is assumed.
22	Seaside Promenade and Beach	1	0.1	306	297	306	0.5	1	1	0	1	Healthy	Adopted from previous study with 3% annual increase
22A	River Promenade, Cycling Track	1	0	32	31	32	0.5	1	1	0	1	Healthy	New seaside Promenade and cycling track under improvement of Mui Wo scheme. Conservative estimate with annual 3% increase
23A	Mui Wo Municipal Services Building	15	1	150	150	150	1	1	1	0.1	1	Healthy	Adopted from previous report
23B	Mui Wo Govt Offices Bldg	3	0.9	100	100	100	1	1	0.1	0	0.1	Healthy	Adopted from previous report
23C	Car Park	1	0	6	6	6	1	1	1	1	1	Healthy	53 parking spaces from Transport Department. Assume 1/10 drivers in the car park at the same time
23D	Car Park	1	0	2	2	2	1	1	1	1	1	Healthy	19 parking space according to Transport Department, conservatively assume 1/10 driver at the car park at the same time
24	Silver Waves Court (Resort)	6	0.9	70	69	70	0.5	0.9	0.9	1	0.9	Healthy	16 two-storey homes for vacation purpose, population of 68 is considered conservative % of occupancy in holiday is assumed to be higher than normal residential site
25	Mui Wo Playground, Rest Garden, Swimming Pool, Recreation Centre	1	0.1	309	300	309	0.5	1	1	0	1	Healthy	Adopted from previous study with 3% annual increase
26	Home for the Elderly (Silver Plaza)	3	0.9	150	150	150	1	1	1	1	1	Vulnerable	Lai Lai Nursing Centre Limited. Max capacity is 123 people. Plus 22 staff based on the requirement by SWD Population of 150 is considered conservatively.
26A	Chan Shi Sau Memorial Social Service Centre	3	1	60	60	60	1	1	0	0.05	0	Vulnerable	Conservative estimate

ID	Caption	Building Height(m)	Indoor Fraction	Population (Base)	Population (Construction)	Population (Operation)	TM1	TM2	TM3	TM4	TM5	Vulnerability	Remarks
27	Ma Po Tsuen	6	0.9	60	59	60	0.5	0.7	0.7	1	0.7	Healthy	Adopted from previous study with 1.5% annual increase
28	Lai Chi Yuen Cemetery	1	0	608	608	608	0.05	0.1	0.1	0	1	Healthy	The existing cemetery
28C	Construction Workers	1	0	0	50	0	1	0	0	0	0	Healthy	50 construction workers is assumed by project proponent
28O	Cemetery Extension (This Project)	1	0	0	0	784	0.05	0.1	0.1	0	1	Healthy	Assume the new niches will be placed in this area
29	Car Park	1	0	1	1	1	1	1	1	1	1	Healthy	10 parking spaces from Transport Department. Assume 1/10 of drivers in the car park at the same time
30	DSD Site Office	6	0.9	50	50	50	1	1	1	0	1	Healthy	Site survey Nov 2016
31	Open Storage	1	0	10	10	10	1	0	0	0	0	Healthy	Site survey (Nov 2016)
R1_B	South Lantau Road (Base Case)	1	0	62	0	0	0.4358	0.4616	0.0004	0.1077	1	Healthy	Population based on Previous Report with annual growth rate Data of TM5 from TIA findings
R1_C	South Lantau Road (Construction Year)	1	0	0	61	0	0.4324	0.445	0.0004	0.1068	1	Healthy	Population based on Previous Report with annual growth rate. Data of TM5 from TIA findings
R1_O	South Lantau Road (Operation Year)	1	0	0	0	113	0.2417	0.2559	0.0002	0.0597	1	Healthy	Population based on Previous Report with annual growth rate, Data of TM5 from TIA findings
R2_B	Road to Lai Chi Yuen Tsuen	1	0	18.18	0	0	0.0156	0.0156	0.0127	0.0039	1	Healthy	Population based on Previous Report with annual growth rate. Data of TM5 from TIA findings
R2_C	Road to Lai Chi Yuen Tsuen	1	0	0	18.17	0	0.0152	0.0152	0.012	0.0037	1	Healthy	Population based on Previous Report with annual growth rate. Data of TM5 from TIA findings
R2_O	Road to Lai Chi Yuen Tsuen	1	0	0	0	41.37	0.0069	0.0069	0.0056	0.0017	1	Healthy	Population based on Previous Report with annual growth rate. Data of TM5 from TIA findings
R3	Ngan Kwong Wan Road	1	0	5	5	5	0.9434	1	0.8171	0.2401	0.8171	Healthy	assumed to be 50% traffic of R1
R4	Mui Wo Ferry Pier Road	1	0	5	5	5	0.9434	1	0.8171	0.2401	0.8171	Healthy	assumed to be 50% traffic of R1
P1_B	South Lantau Road (Pedestrian)	1	0	12.6	0	0	0.12167	0.12167	0.5962	0	1	Healthy	Base Case
P1_C	South Lantau Road (Pedestrian)	1	0	0	10.5	0	0.14171	0.14171	0.69439	0	1	Healthy	Construction Case
P1_O	South Lantau Road (Pedestrian)	1	0	0	0	31.8	0.04802	0.04802	0.23529	0	1	Healthy	Operation Case
P2_B	Single Track Access Road (Pedestrian)	1	0	13.3	0	0	0.12167	0.12167	0.5962	0	1	Healthy	Base Case
P2_C	Single Track Access Road (Pedestrian)	1	0	0	11.1	0	0.14171	0.14171	0.69439	0	1	Healthy	Construction Case
P2_O	Single Track Access Road (Pedestrian)	1	0	0	0	33.8	0.04802	0.04802	0.23529	0	1	Healthy	Operation Case

ID	Caption	Building Height(m)	Indoor Fraction	Population (Base)	Population (Construction)	Population (Operation)	TM1	TM2	TM3	TM4	TM5	Vulnerability	Remarks
P3_B	Road to Lai Chi Yuen Cemetery	1	0	45.4	0	0	0.01966	0.01966	0.27322	0	1	Healthy	Base Case
P3_C	Road to Lai Chi Yuen Cemetery	1	0	0	41.9	0	0.02066	0.02066	0.28716	0	1	Healthy	Construction Case
P3_O	Road to Lai Chi Yuen Cemetery	1	0	0	0	92.9	0.0096	0.0096	0.13342	0	1	Healthy	Operation Case

Notes:

- (1) Building height is derived from the number of storey of building and an assumption of 3m per storey, except for those buildings with building height publicly available (e.g. the Ngan Wan Estate).
- (2) For other population such as roads and beaches, building height of 1m is assumed for simulation purpose, it will effectively mean no building height protection for the population.
- (3) For some of the roads such as "R1" and "R2", the population is split into "Base Case", "Construction Case" and "Operation Case" as they have different TM factors. They are denoted by "R1", "R2", "P1", "P2", etc. in the map above for simplicity/clarity.