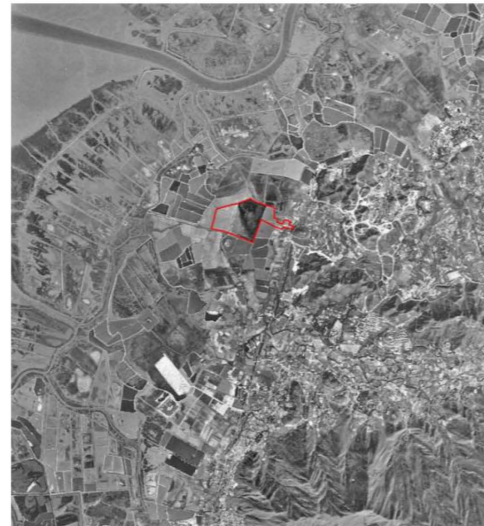
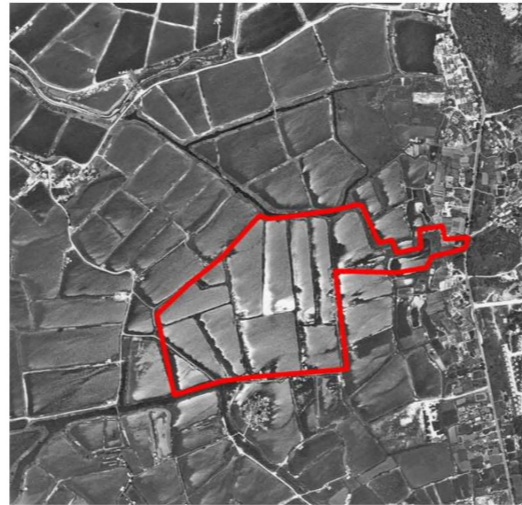


1945 – brackish paddies



1964 – freshwater fish ponds



1984 – continued fish ponds



1987 – commencement of filling of fish ponds



1990 – 90% of site filled



1991 – 100% of site filled



1994 – open storage in northeast of site & vegetation elsewhere




2004 – current situation – no change since 1994

Notes

Key to symbols

Reference drawings

Rev	Date	Drawn	Description	Ch'kd	App'd
-----	------	-------	-------------	-------	-------


 20/F AJA Kowloon Tower
 Landmark East
 100 How Ming Street
 Kwun Tong, Kowloon
 Hong Kong
 T +852 2828 5757
 F +852 2827 1823
 W mottmac.com

Client
PROFIT POINT ENTERPRISES LTD.

Project
PROPOSED INTERIM SEWAGE TREATMENT PLANT AND EFFLUENT REUSE FACILITY AT WO SHANG WAI, YUEN LONG

Title
HISTORICAL AERIAL PHOTOS

Designed		Eng check	
Drawn		Coordination	
Dwg check		Approved	
Scale at A1	Status	Rev	

Drawing Number
FIGURE 2.2