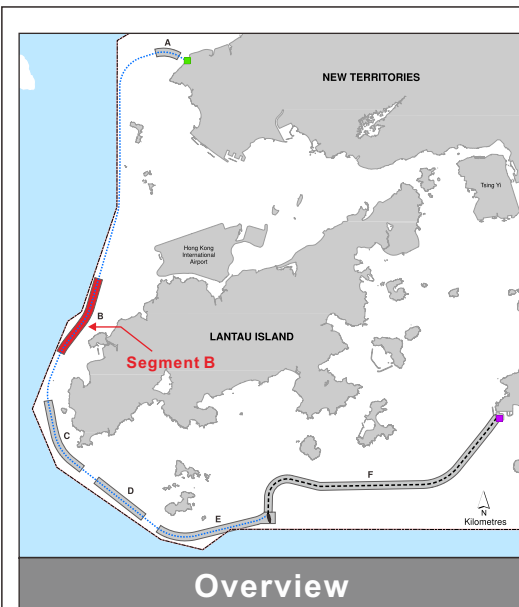


Not to Scale

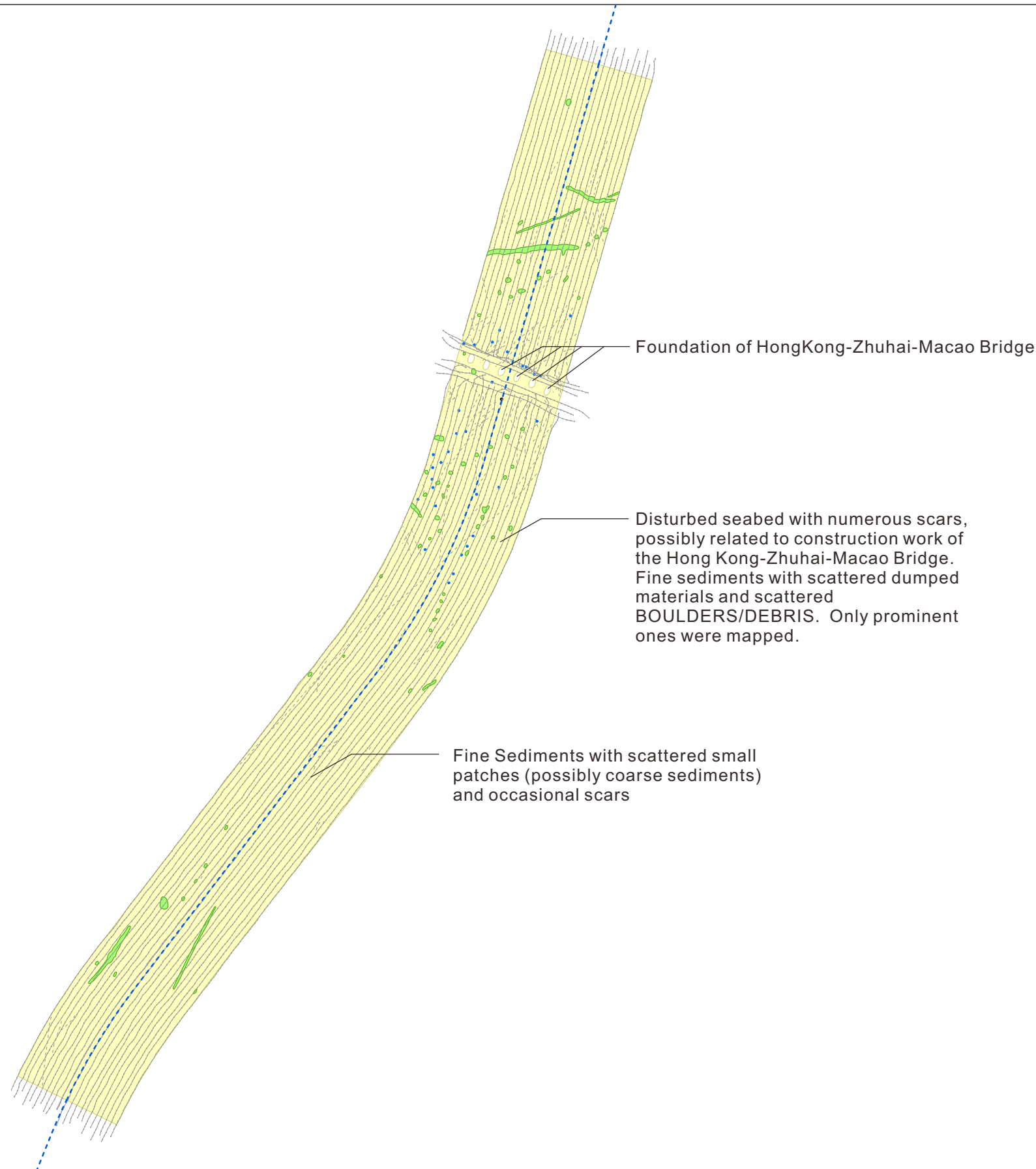
Figure 12.4

Survey Track Plots, Seabed Features and Sonar Contacts Locations in Segment A



Legend

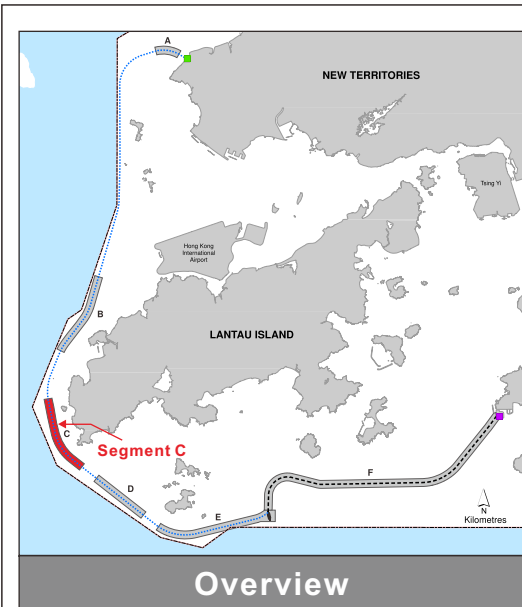
- Fine Sediment
- Dumped Material
- Isolated Rock / Boulder
- Seabed Depression or Pockmark
- Indicative Gas Pipeline Route to BPPS
- Side Scan Sonar Survey Track Plot
- Orientation of Megaripple Crest
- Seabed Scar (Trawl or Anchor)



Not to Scale

Figure 12.5

Survey Track Plots, Seabed Features and Sonar Contacts Locations in Segment B



Legend

- Fine Sediment
- Dumped Material
- Coarse Sediment with Boulder/Debris
- Isolated Rock / Boulder
- Isolated Sonar Contact with Reference (LengthxWidthxHeight in Metres where Measurable; nmh = no measurable height)
- Proposed Route of BPPS Pipeline
- Side Scan Sonar Survey Track Plot
- Orientation of Megaripple Crest
- Seabed Scar (Trawl or Anchor)

Not to Scale

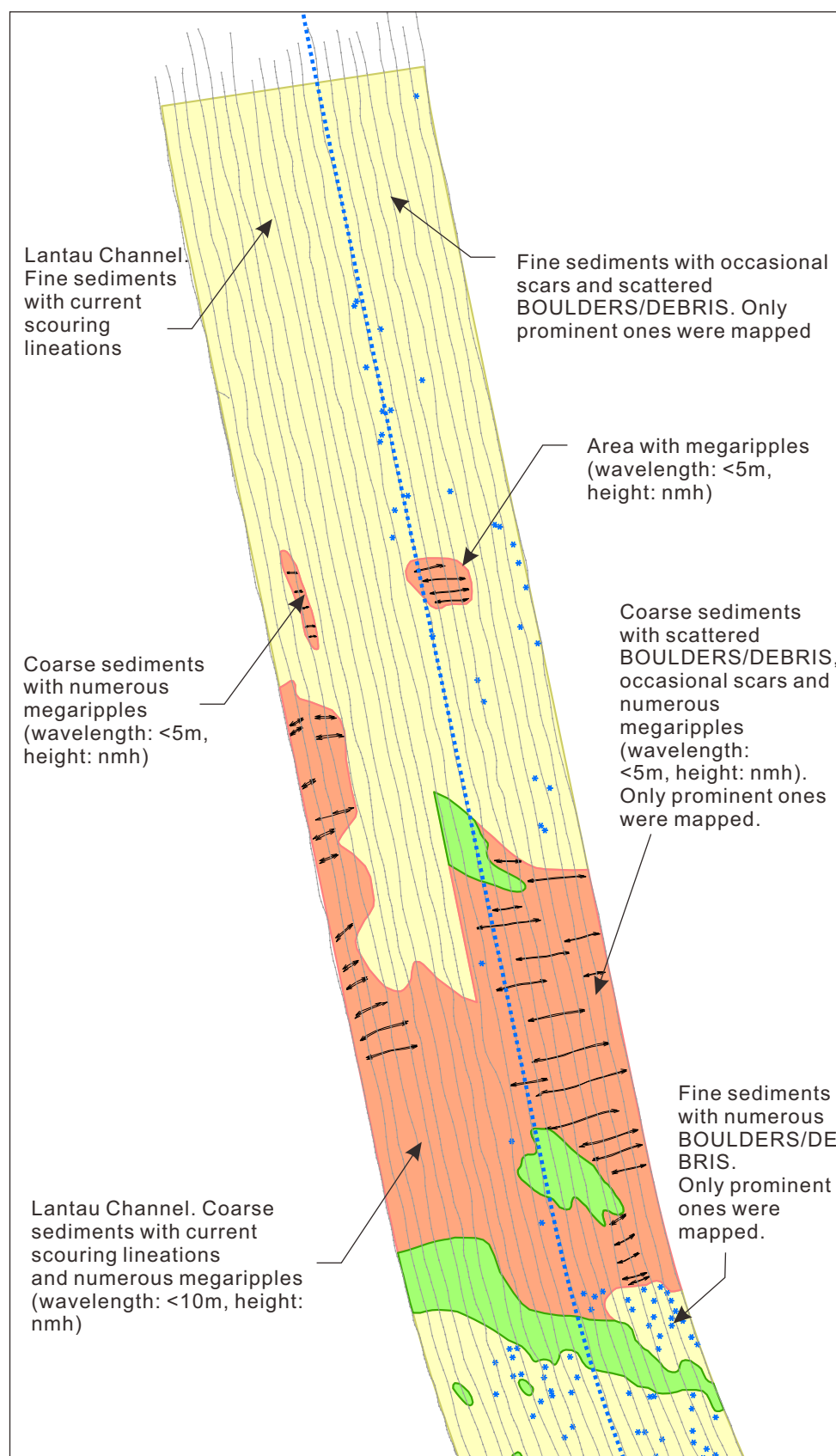


Figure 12.6

Survey Track Plots, Seabed Features and Sonar Contacts Locations in Segment C

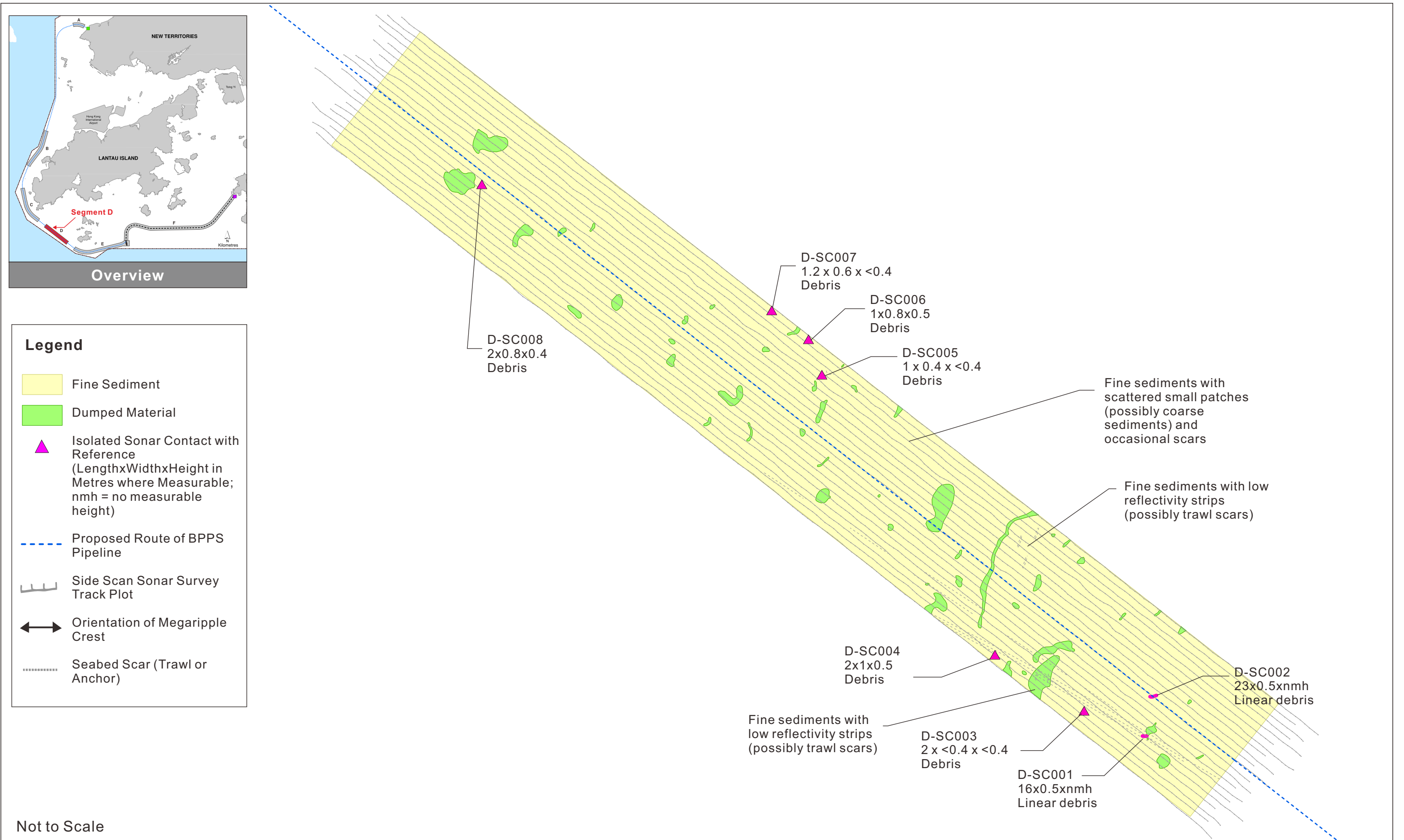
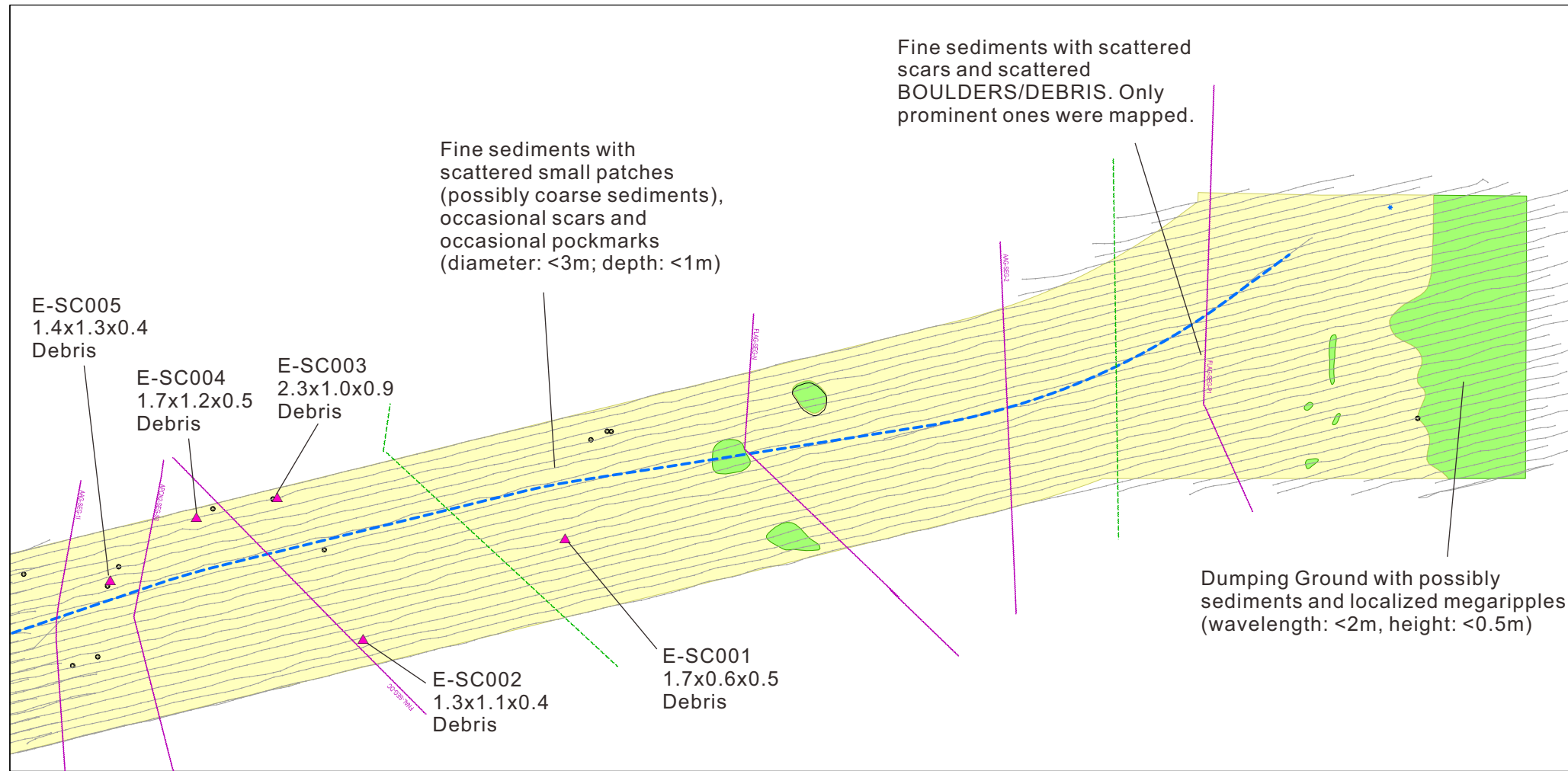
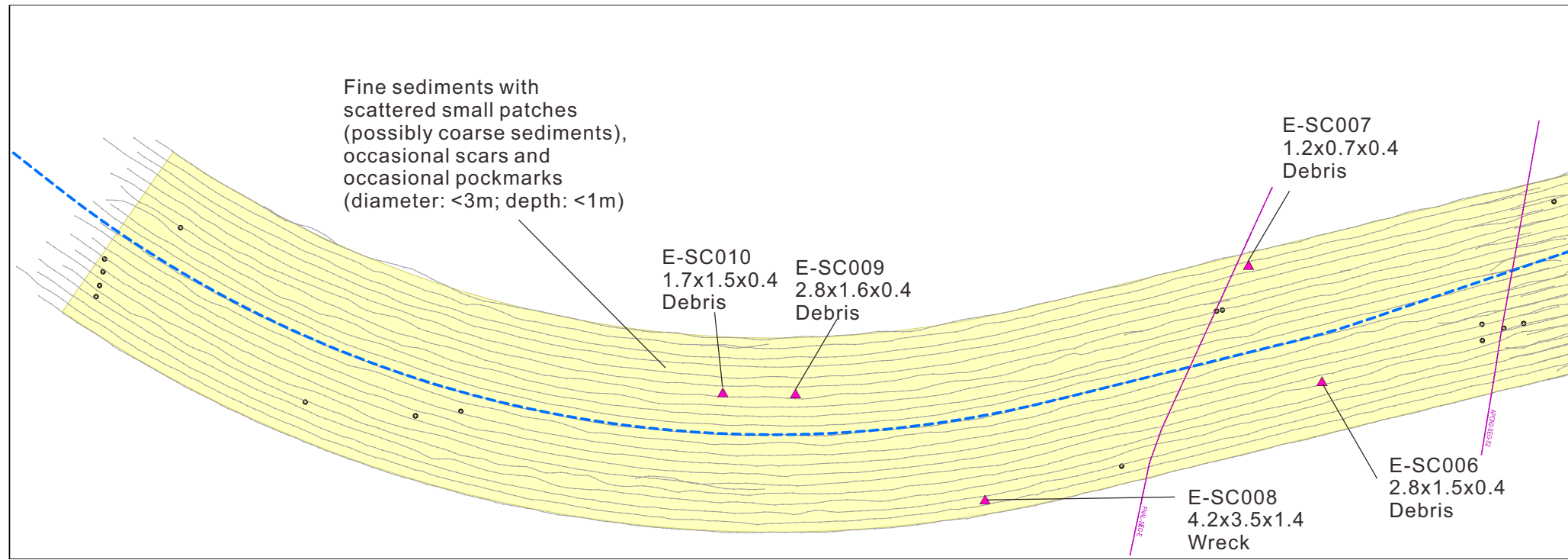
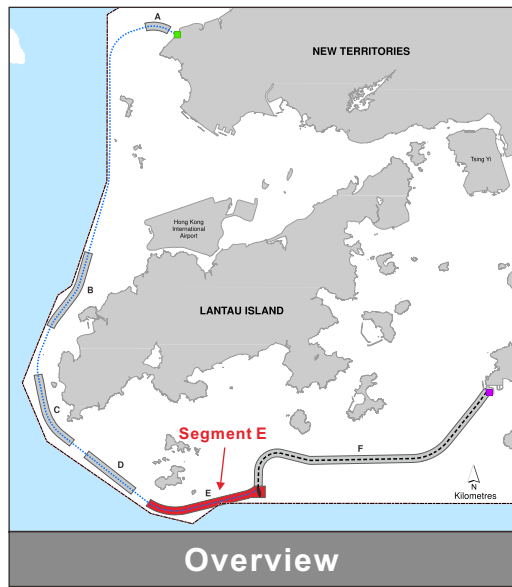


Figure 12.7

Survey Track Plots, Seabed Features and Sonar Contacts Locations in Segment D



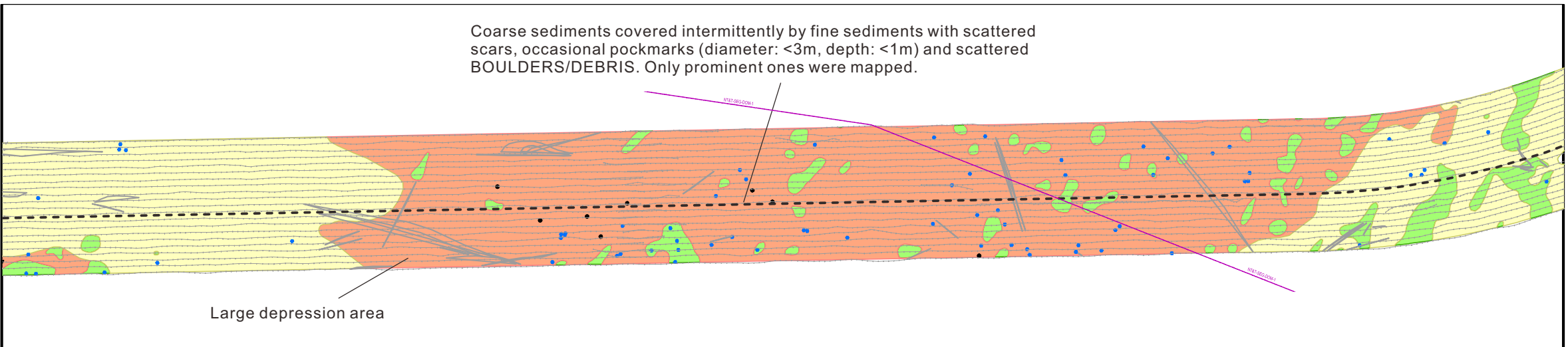
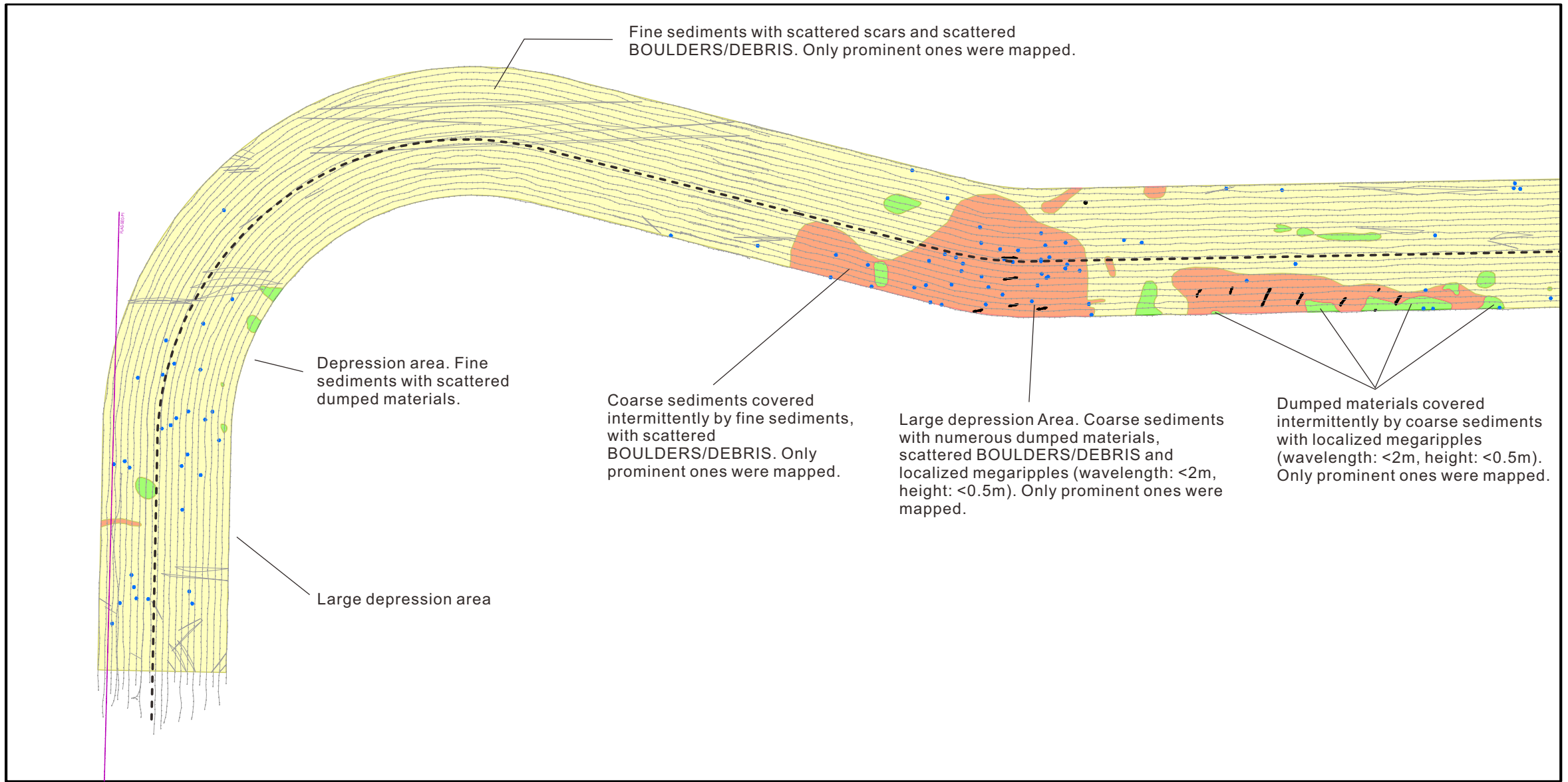
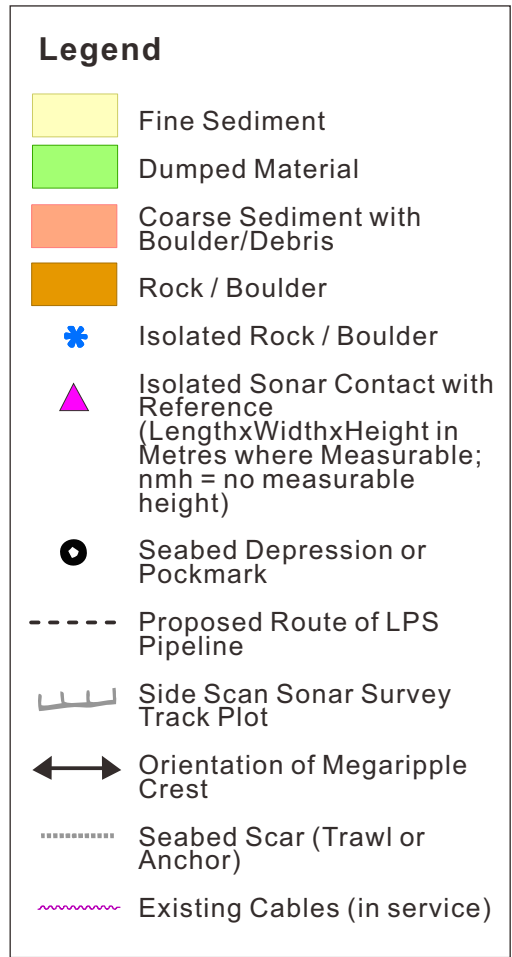
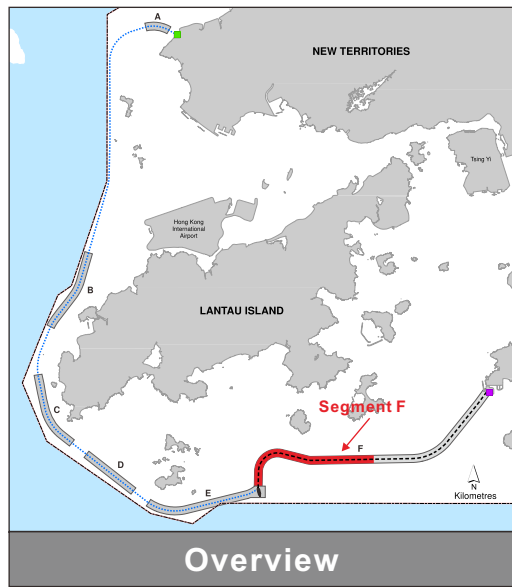
Legend

- Fine Sediment
- Dumped Material
- Isolated Rock / Boulder
- Isolated Sonar Contact with Reference (LengthxWidthxHeight in Metres where Measurable; nmh = no measurable height)
- Proposed Route of BPPS Pipeline
- Side Scan Sonar Survey Track Plot
- Orientation of Megaripple Crest
- Seabed Scar (Trawl or Anchor)
- Existing Cables (in service)
- Existing Cables (out of service)

Not to Scale

Figure 12.8

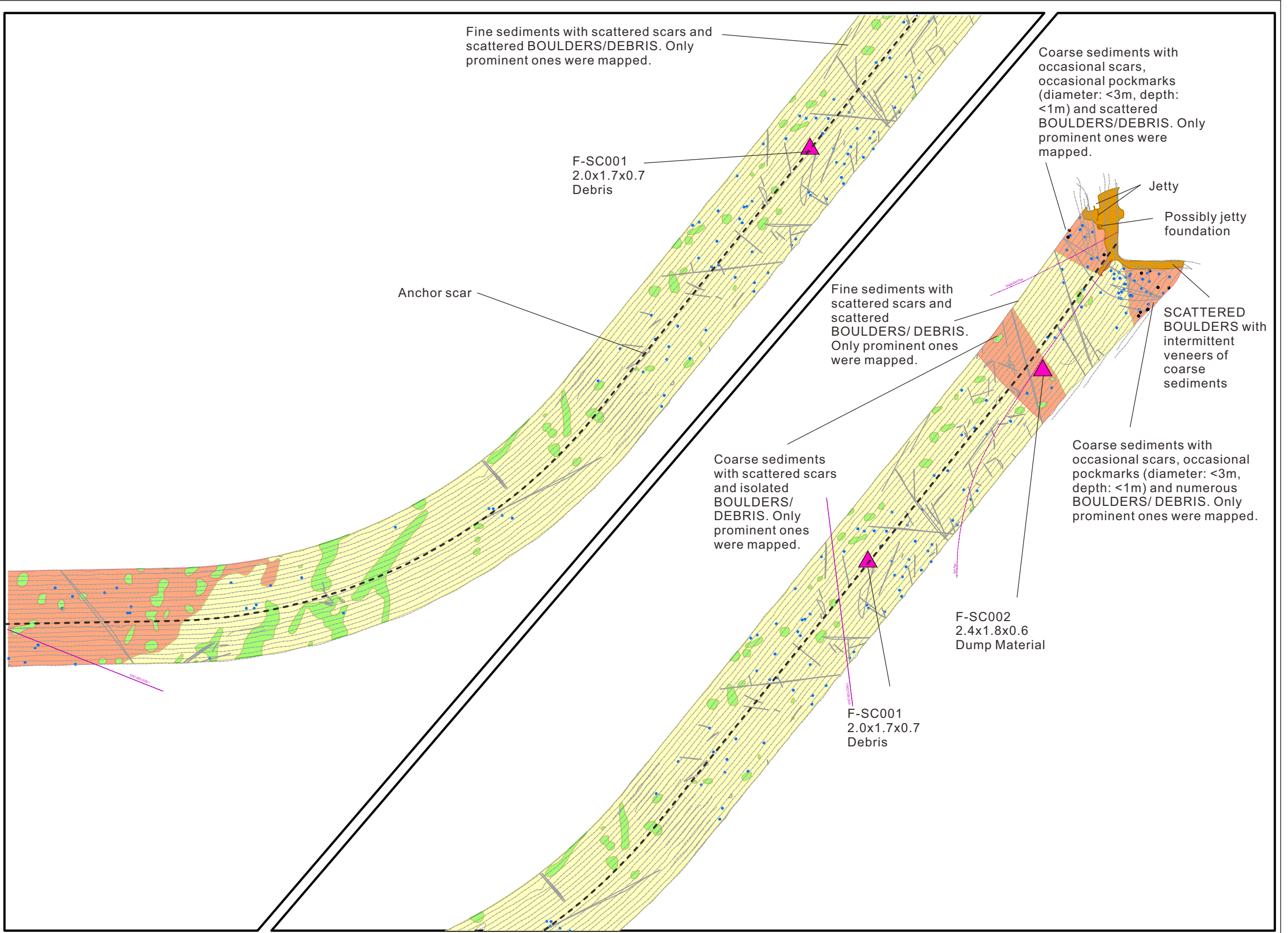
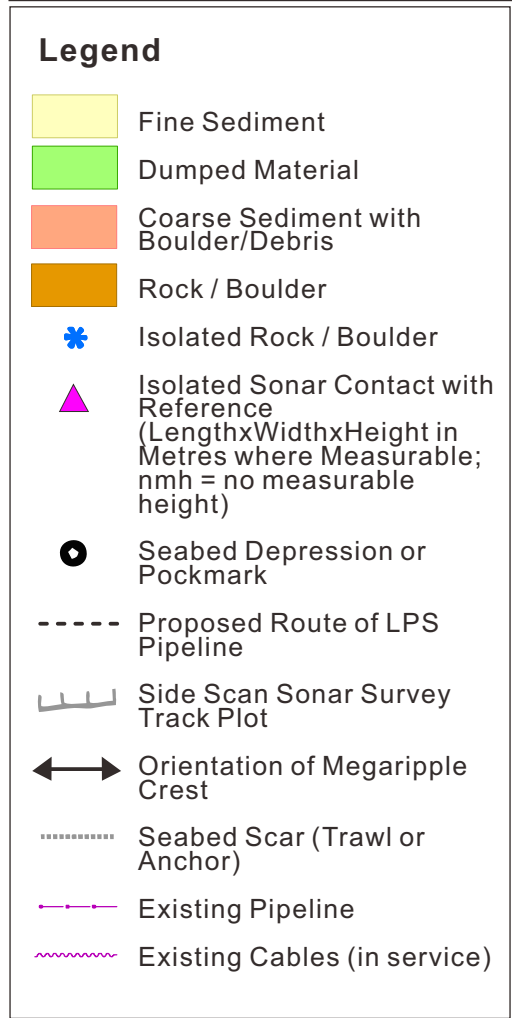
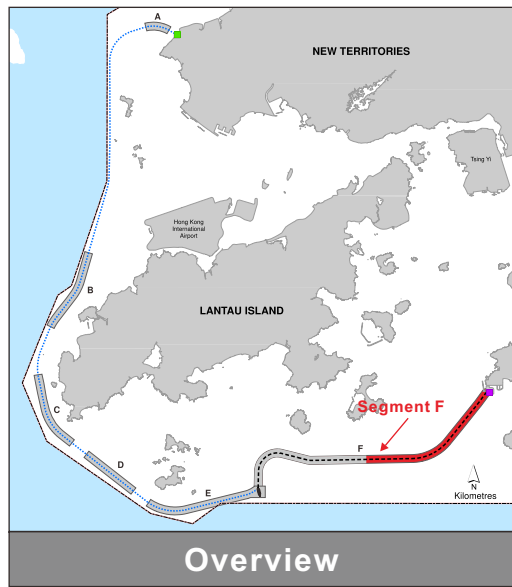
Survey Track Plots, Seabed Features and Sonar Contacts Locations in Segment E



Not to Scale

Figure 12.9a

Survey Track Plots, Seabed Features and Sonar Contacts Locations in Segment F (Sheet 1 of 2)



Not to Scale

Figure 12.9b

Survey Track Plots, Seabed Features and Sonar Contacts Locations in Segment F
(Sheet 2 of 2)

FILE: 0359722f02
DATE: 26/10/2017

Environmental
Resources
Management

