

Figure 9D.1

Distribution of Chinese White Dolphin in Western Waters
from 2007 to 2017

Environmental
Resources
Management



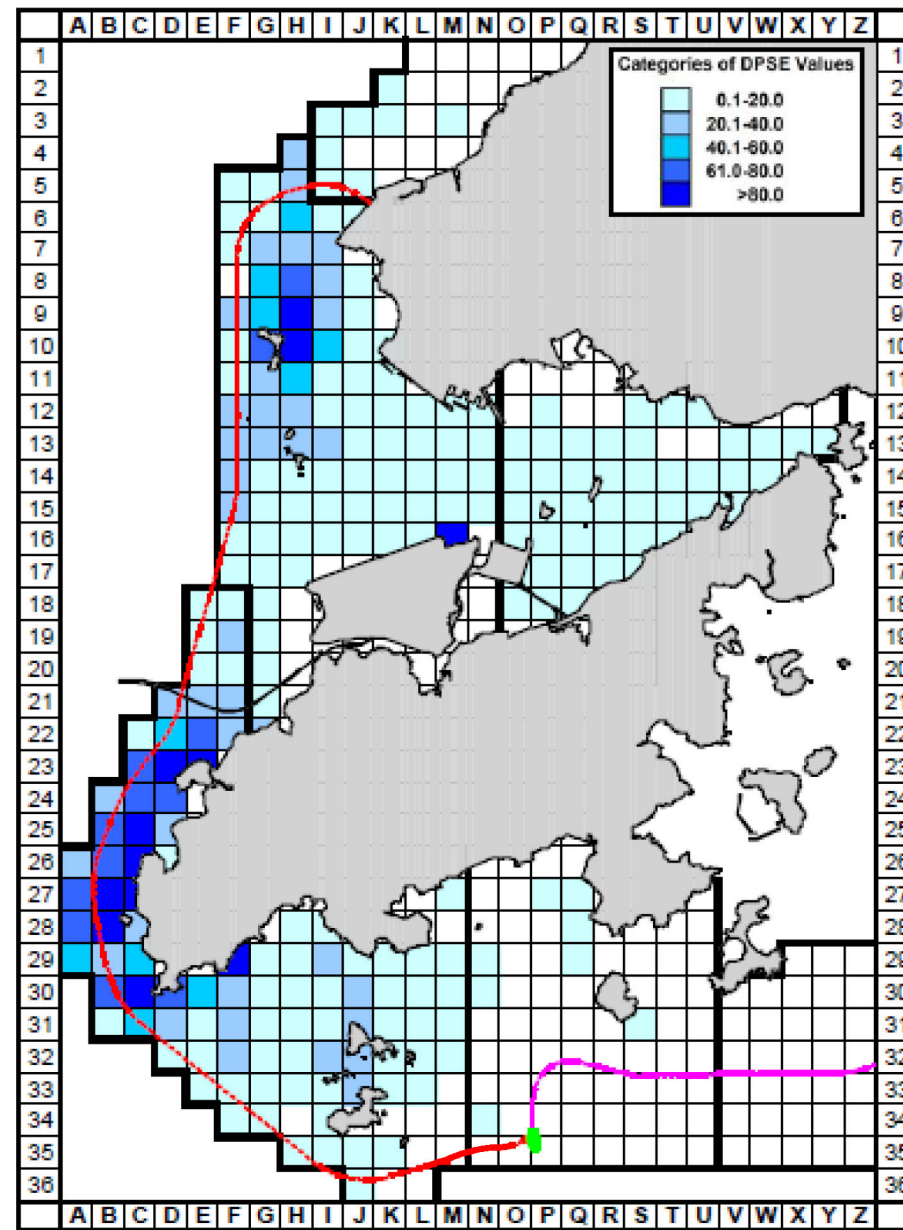
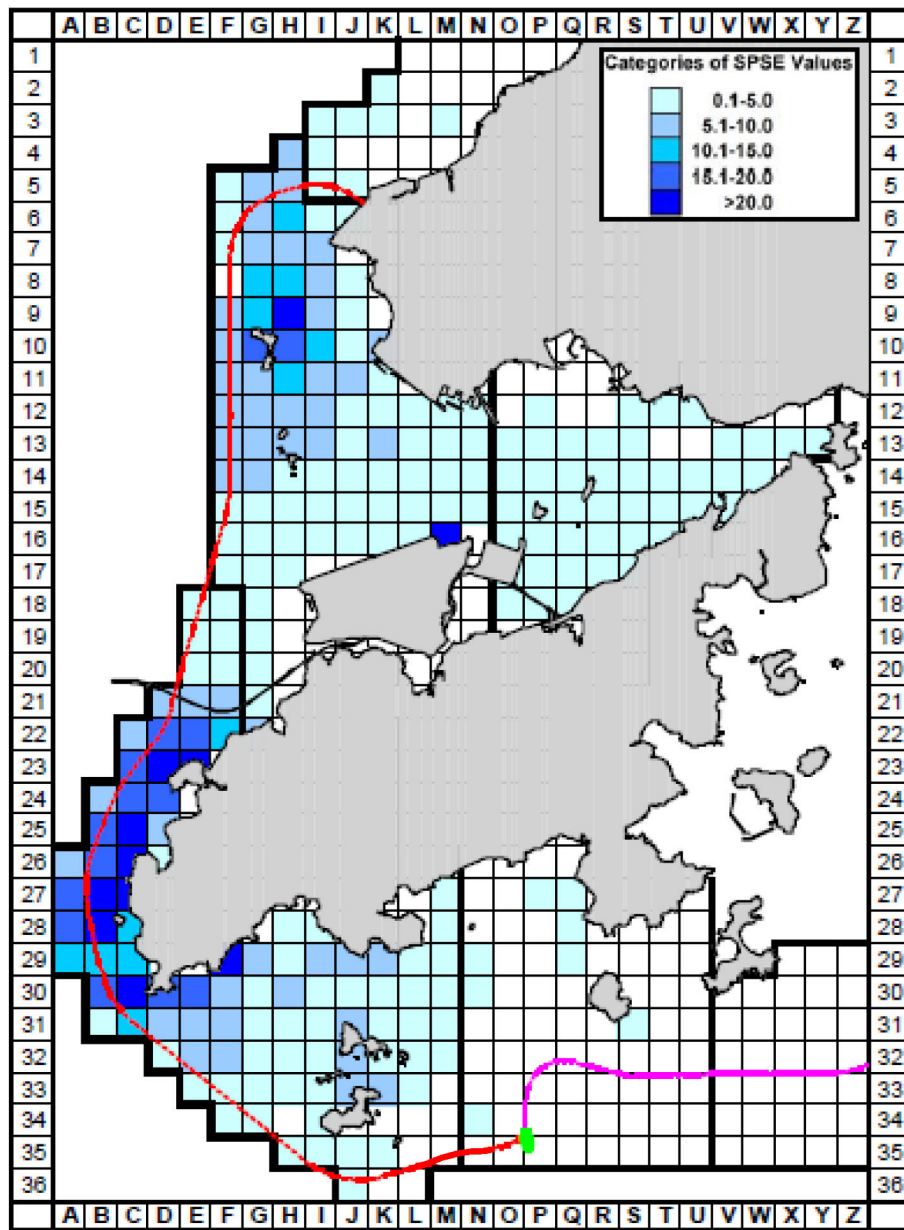


Figure 9D.2

Overall sighting density (left) and Overall density (right) of Chinese White Dolphins with corrected survey effort per km² in waters around Lantau Island, using data collected during 2007- 2017

DATE: 8/11/2017

Environmental Resources Management



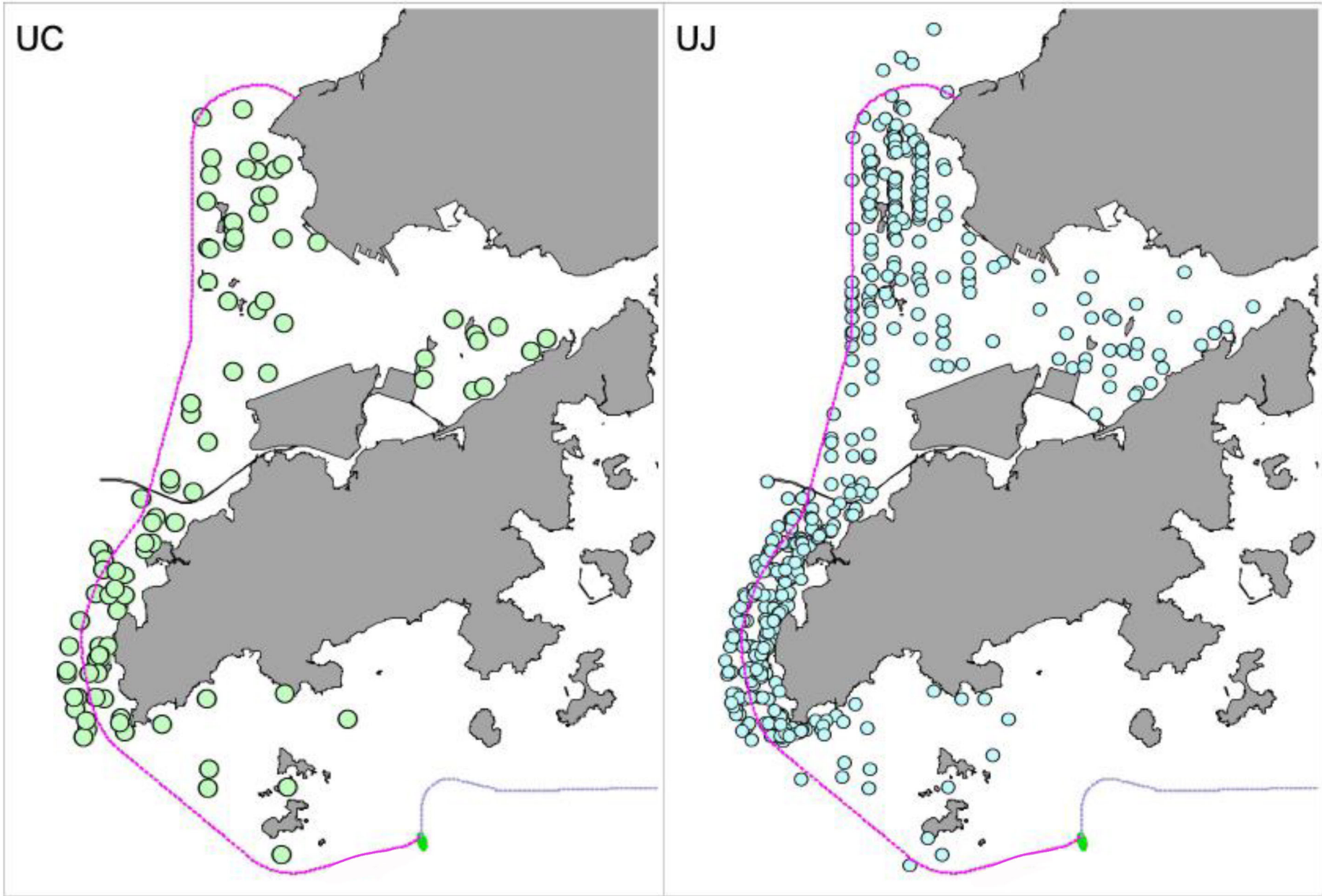


Figure 9D.3

Distribution of unspotted calves (left) and unspotted juveniles (right) of Chinese White Dolphins in western waters of Hong Kong during 2007 - 2017

DATE: 8/11/2017

Environmental
Resources
Management



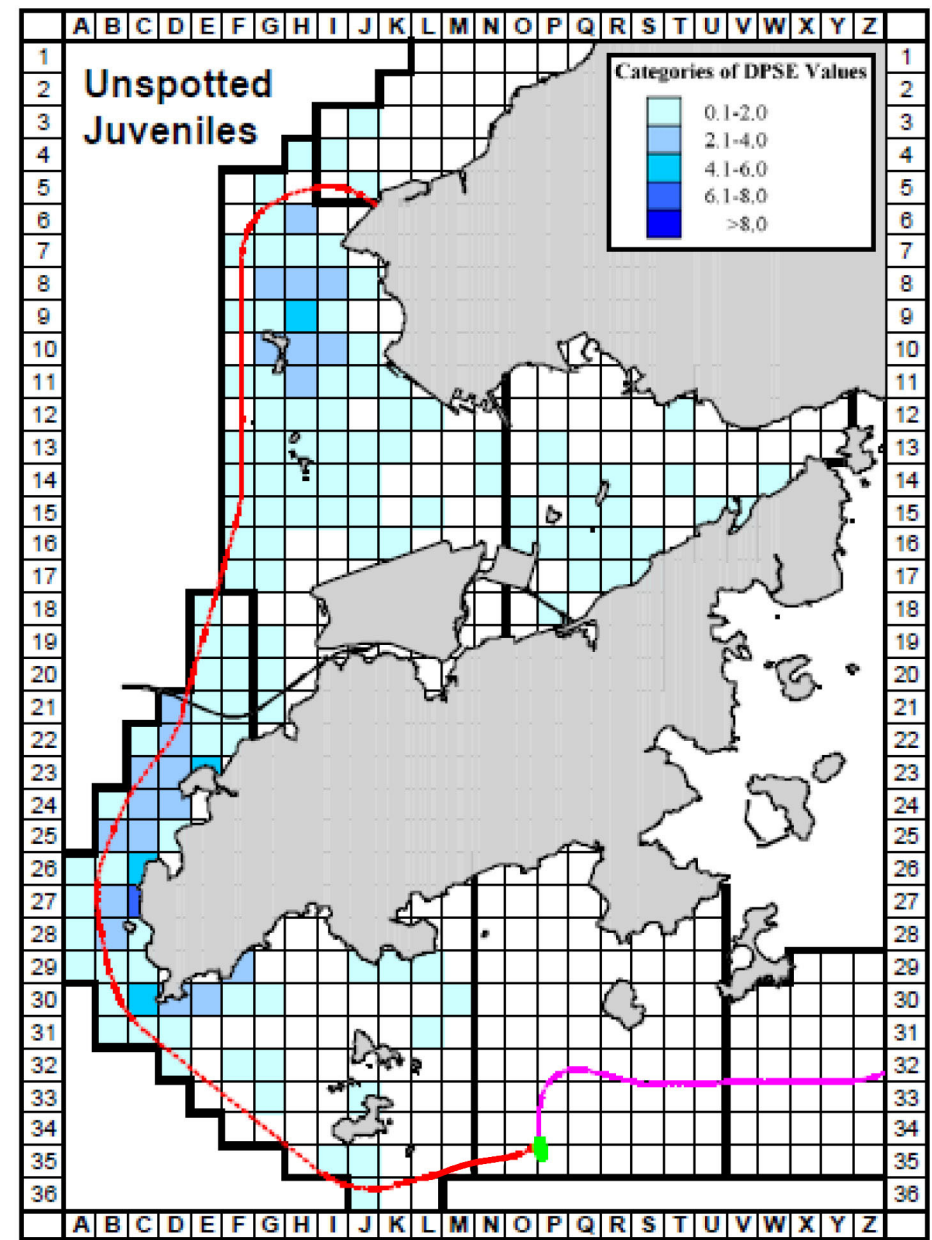
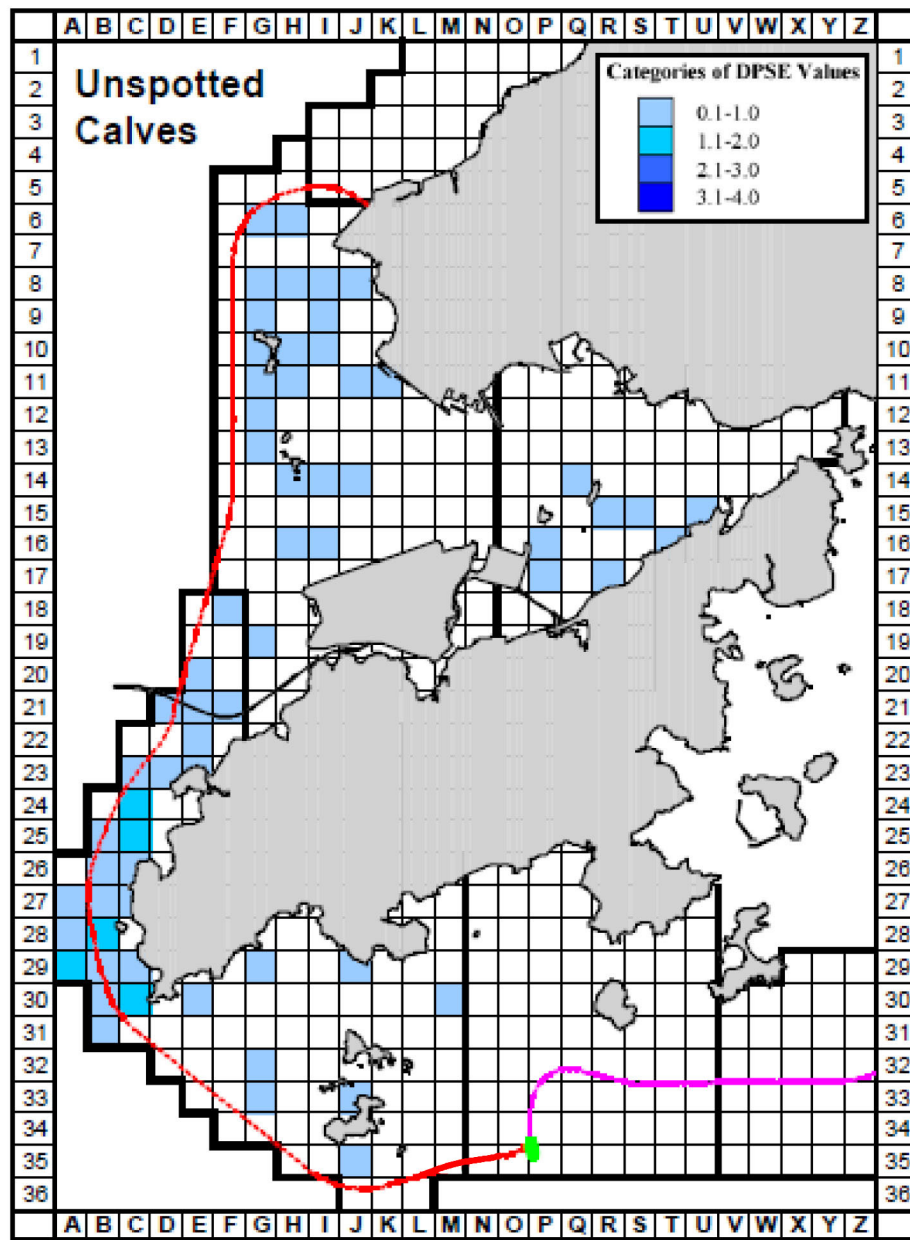


Figure 9D.4

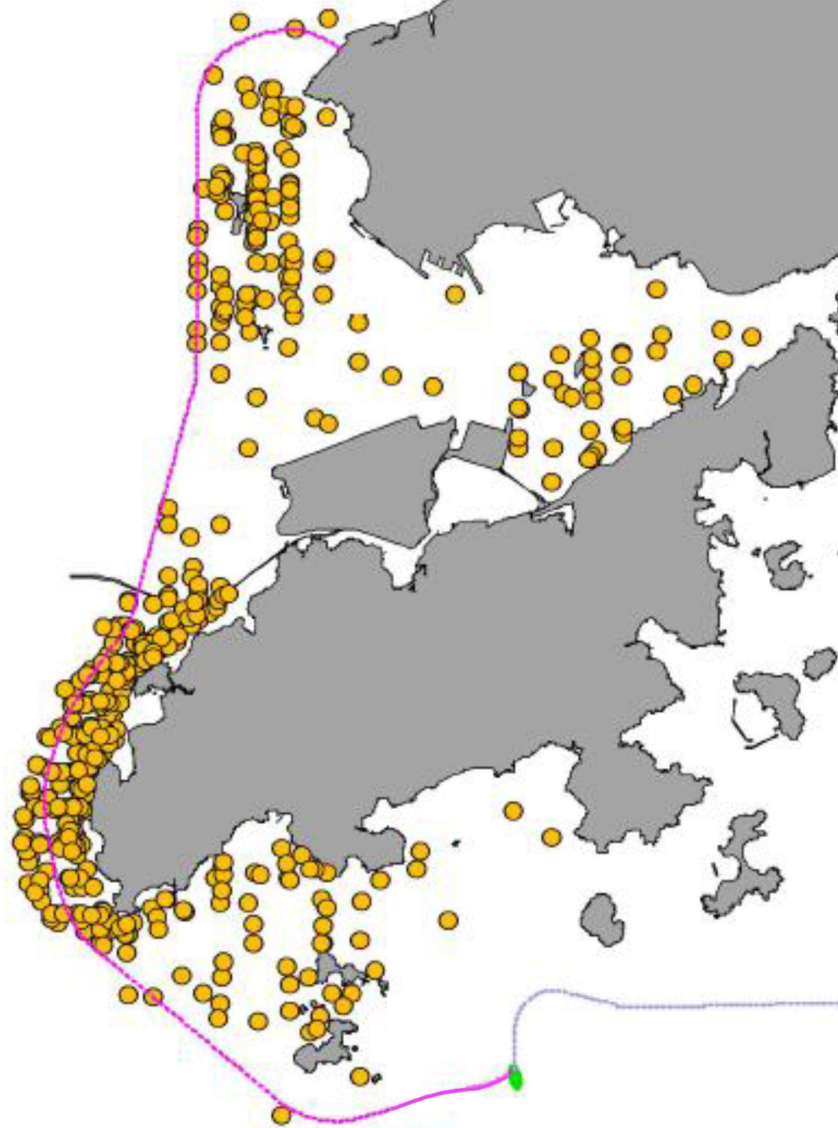
Density of unspotted calves (left) and density of unspotted juveniles (right) of Chinese White Dolphins per km² in waters around Lantau Island from 2007 - 2017

DATE: 8/11/2017

Environmental
Resources
Management



FEED



SOCIAL



Figure 9D.5

Distribution of Chinese white dolphins engaged in feeding and socializing activities in western waters of Hong Kong during 2007 - 2017

DATE: 8/11/2017

Environmental Resources Management



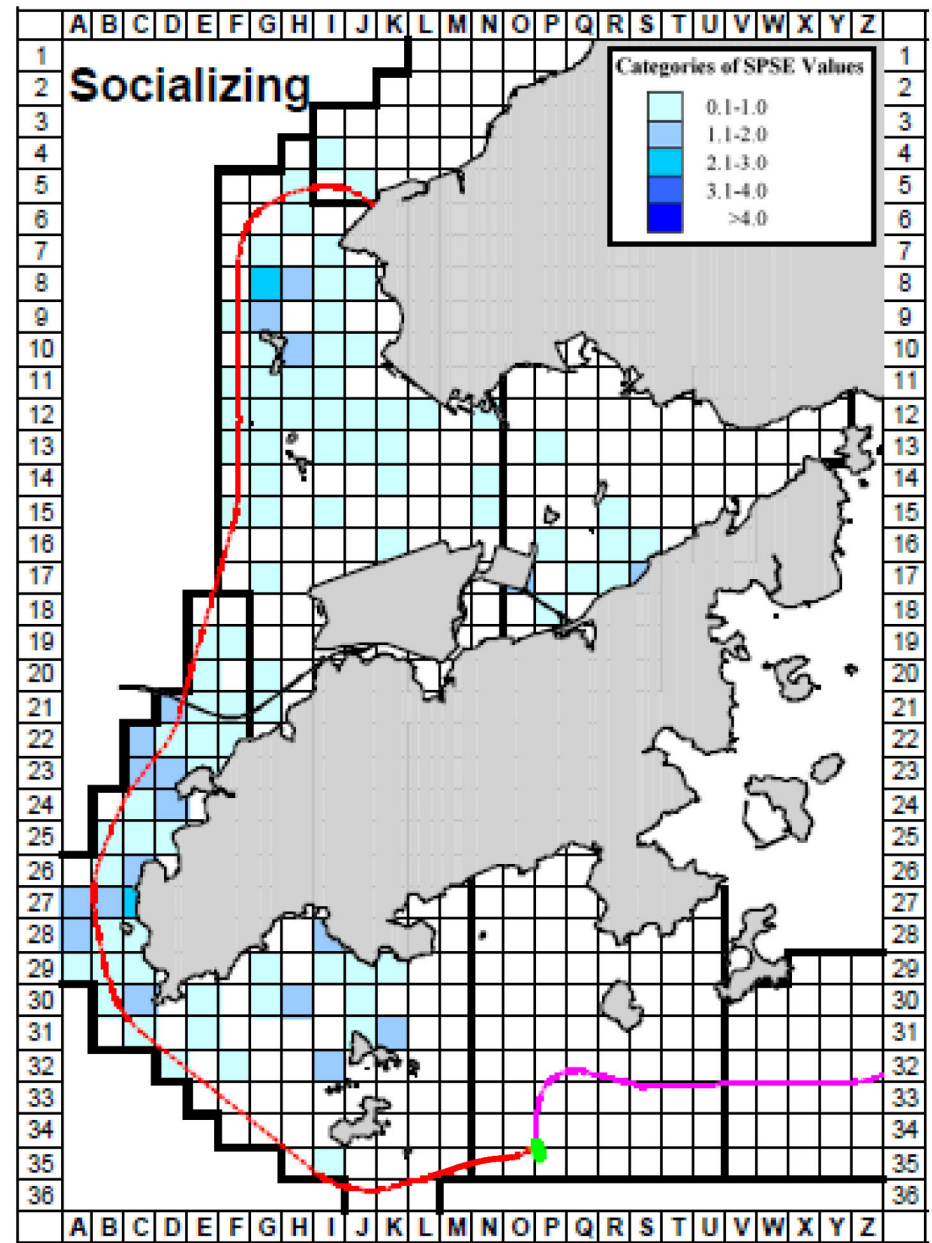
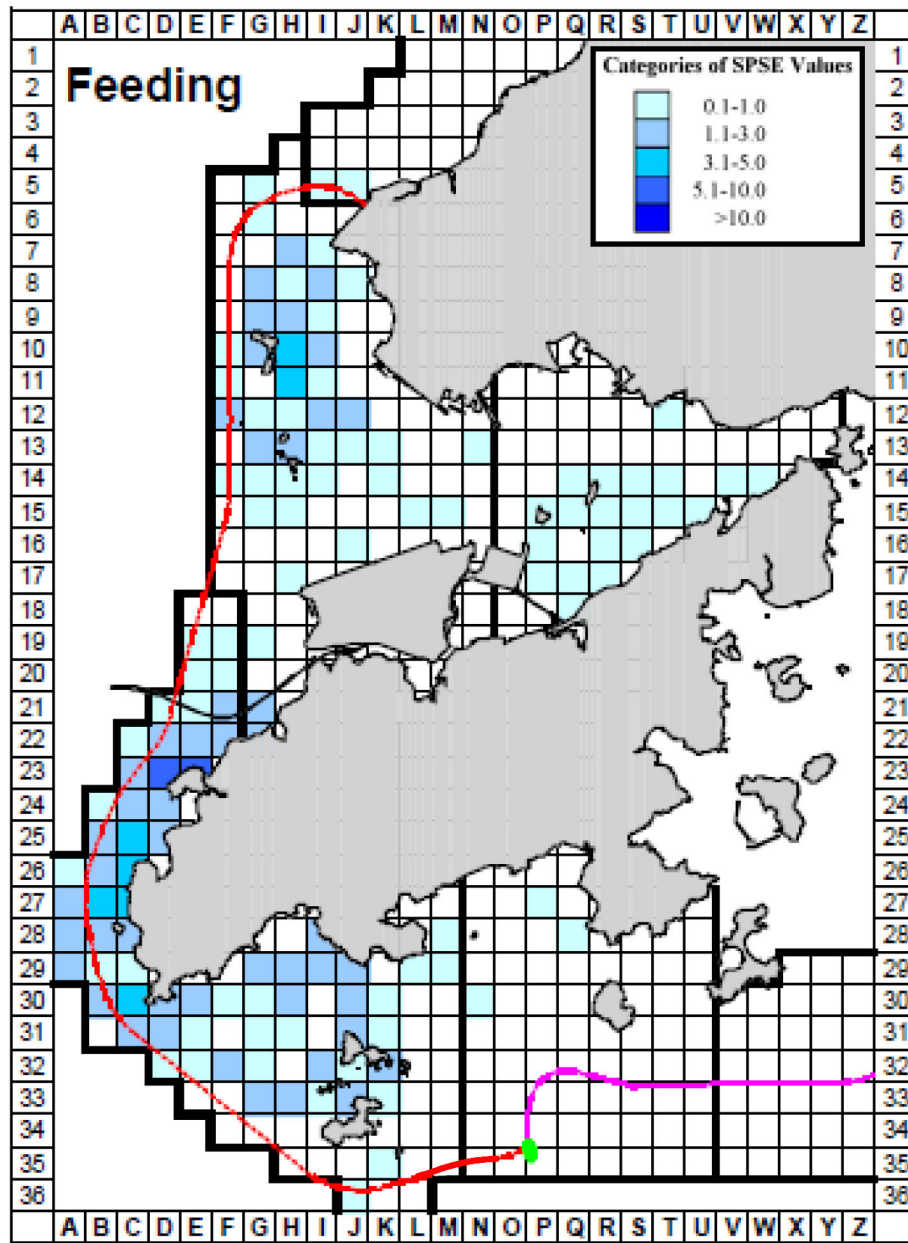


Figure 9D.6

Sighting densities (SPSE) of Chinese White Dolphins per km² engaged in feeding (left) and socializing (right) activities in waters around Lantau Island from 2007 - 2017

DATE: 8/11/2017

Environmental Resources Management



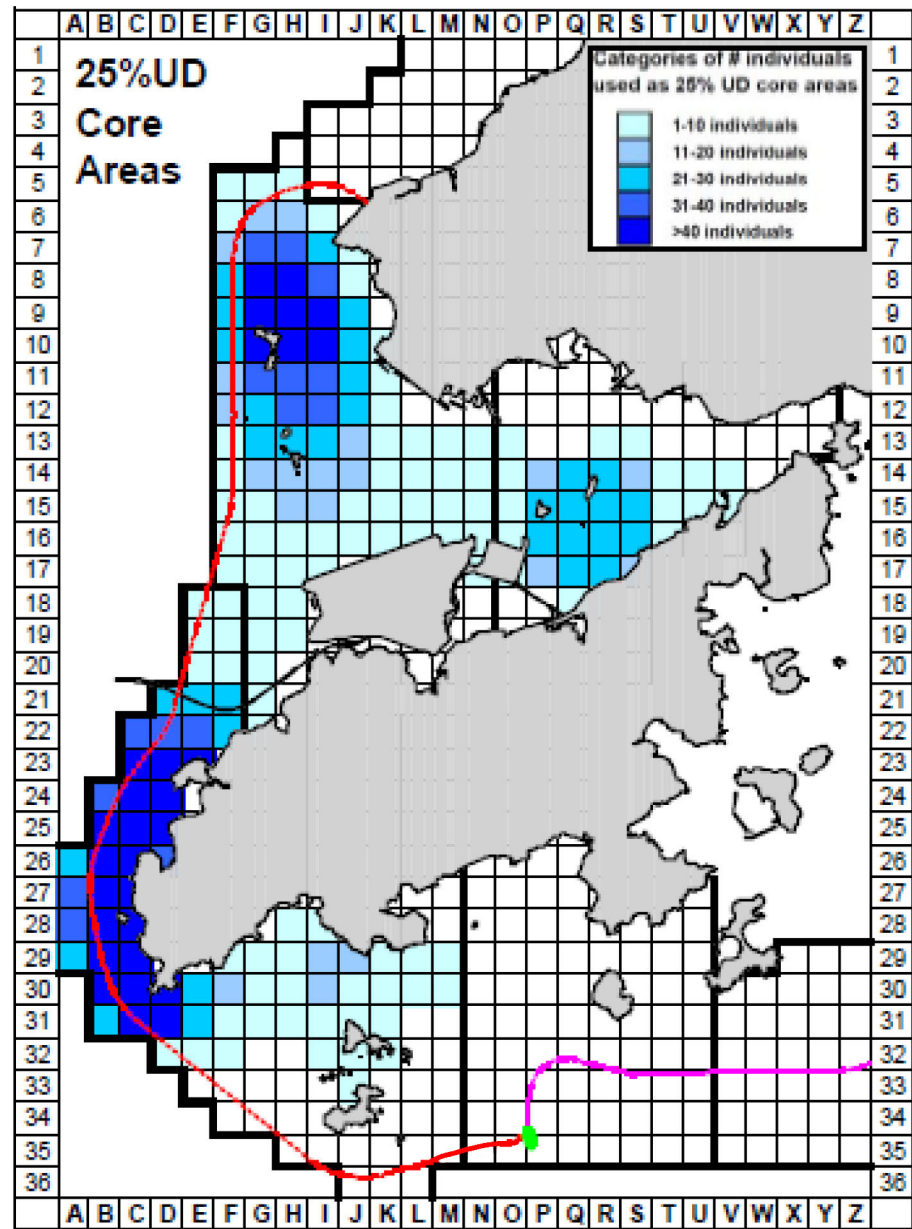
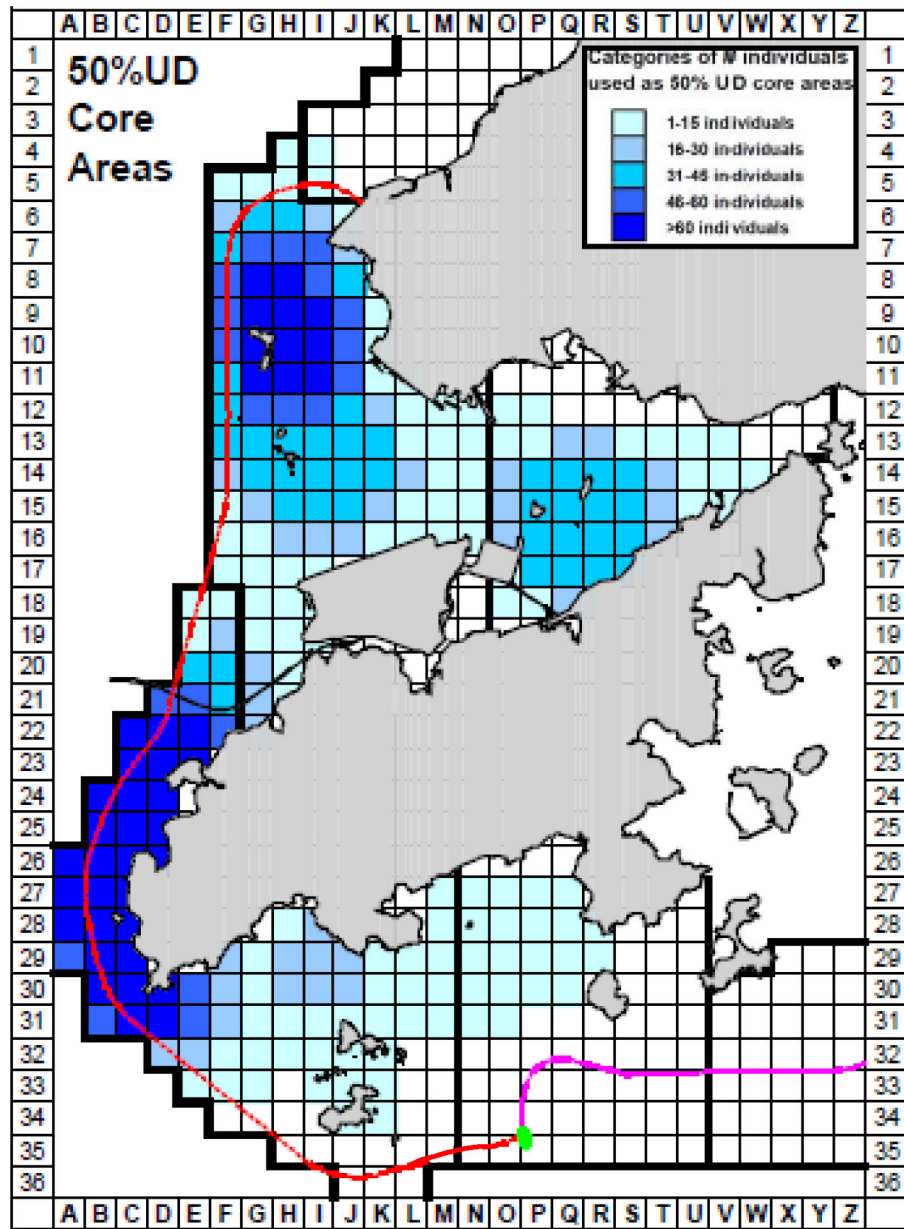


Figure 9D.7

Number of individual Chinese White Dolphins with their 50% (left) and 25% (right) UD core areas overlapped with each 1 km² grid in waters around Lantau Island from 2007 - 2017

DATE: 8/11/2017

Environmental Resources Management



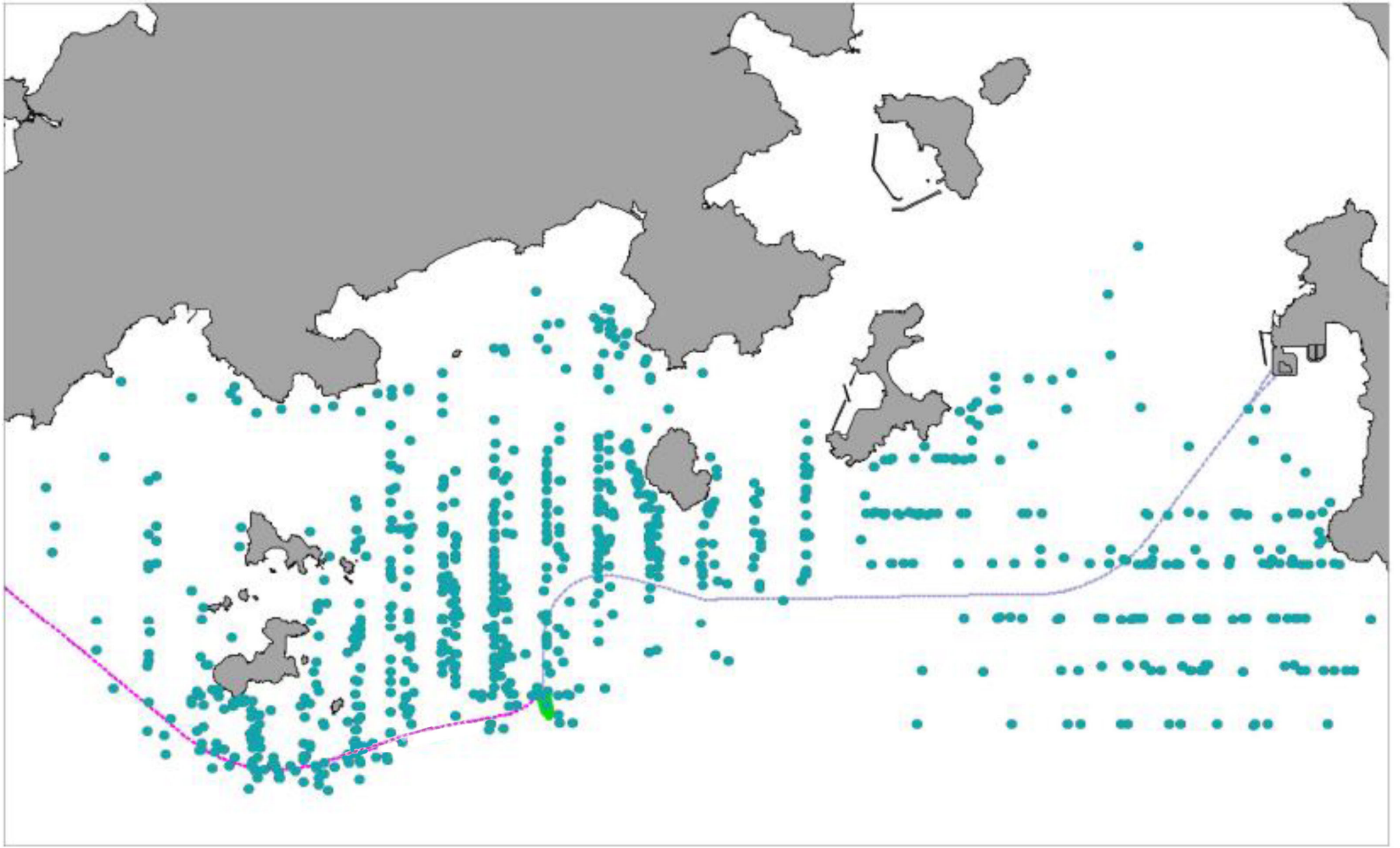


Figure 9D.8

Distribution of Sightings of Finless Porpoises in Southern Waters of
Hong Kong in 2007 - 2017

DATE: 8/11/2017

Environmental
Resources
Management



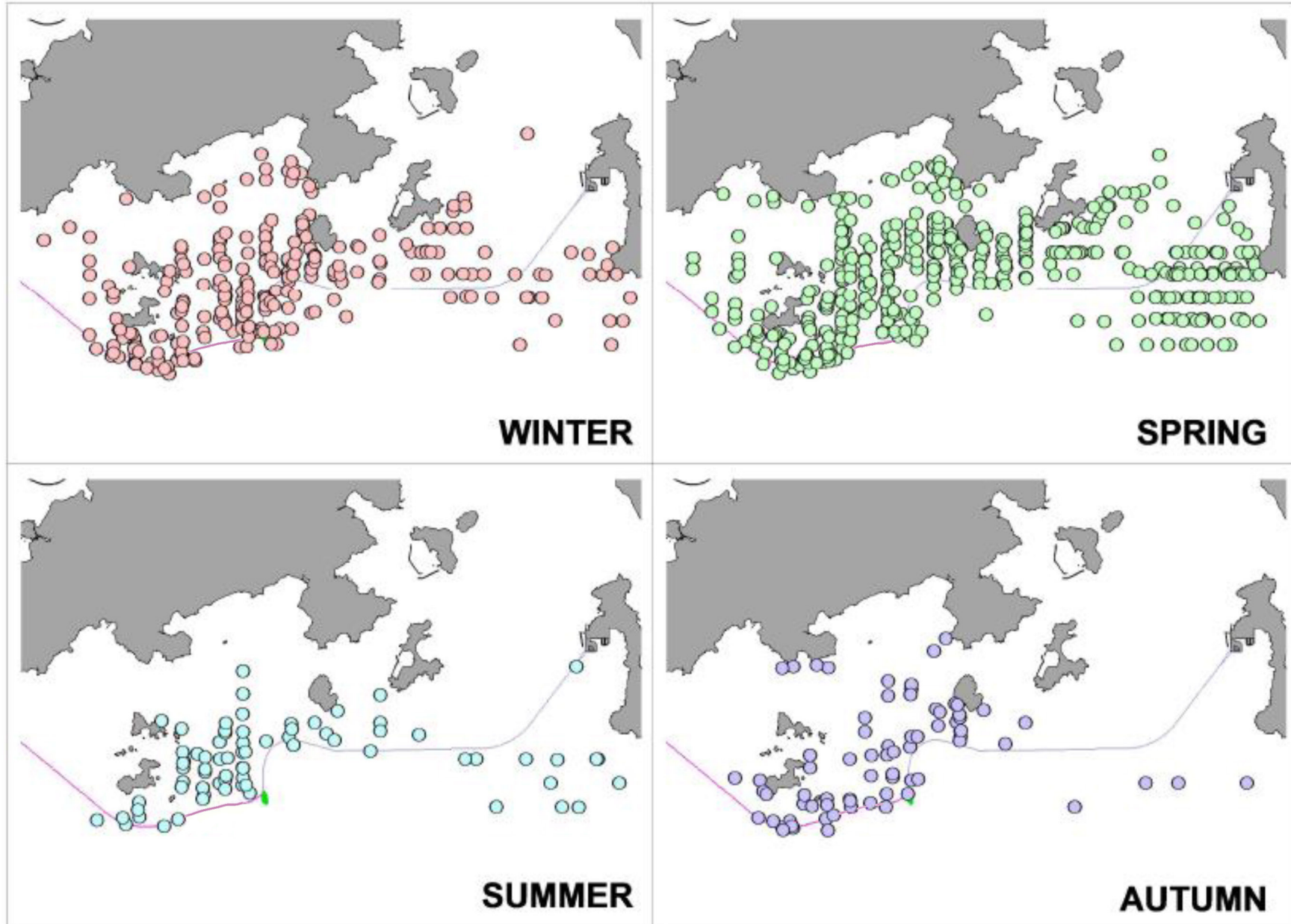


Figure 9D.9

Seasonal Pattern in Distribution of Sightings of Finless Porpoises in Southern Waters of Hong Kong in 2007 - 2017

DATE: 8/11/2017

Environmental
Resources
Management



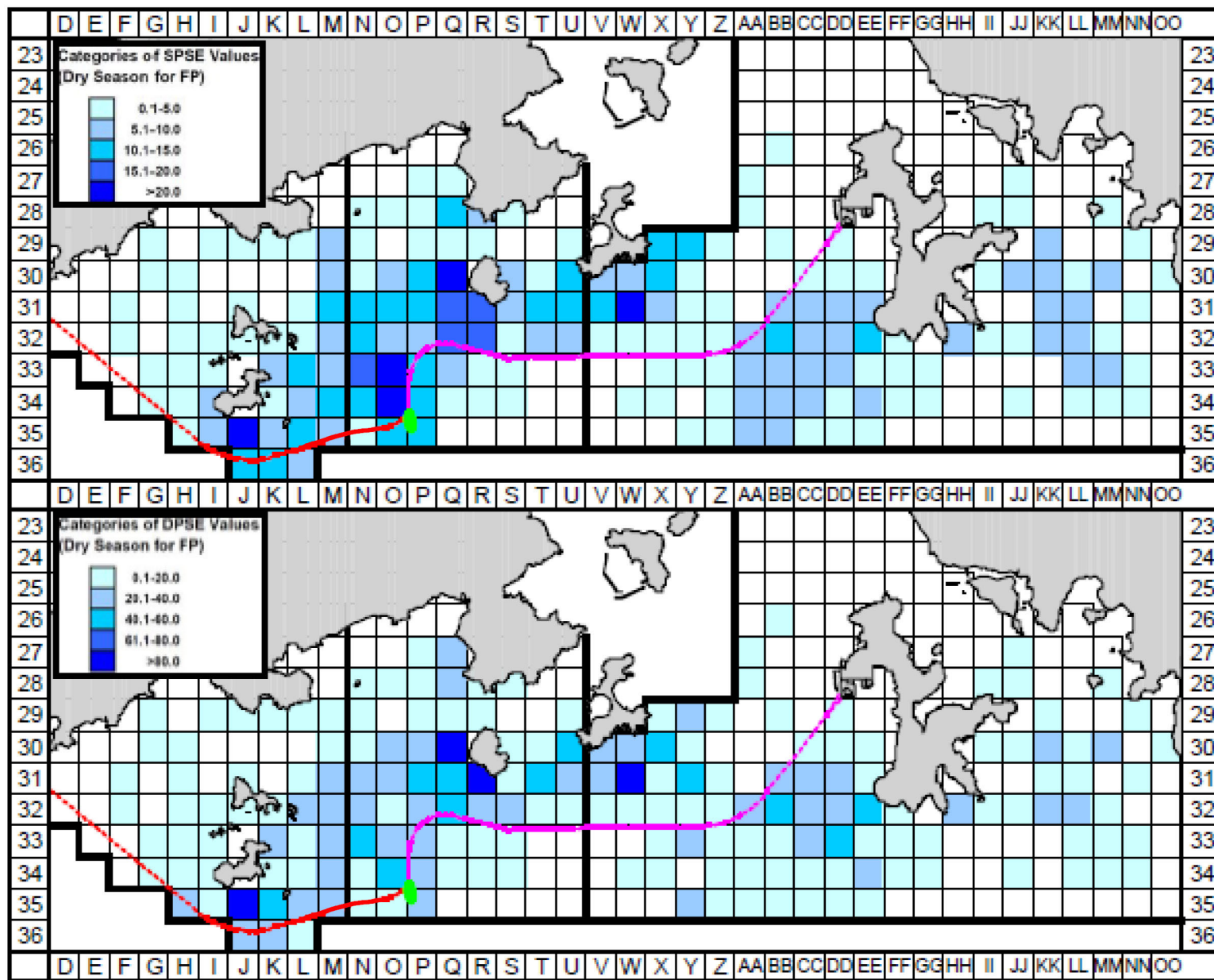


Figure 9D.10

Overall sighting density (top) and overall density (bottom) of finless porpoises with corrected survey effort per km² during the dry season in southern waters of Hong Kong, using data collected during 2007 - 2017

DATE: 8/11/2017

Environmental
Resources
Management



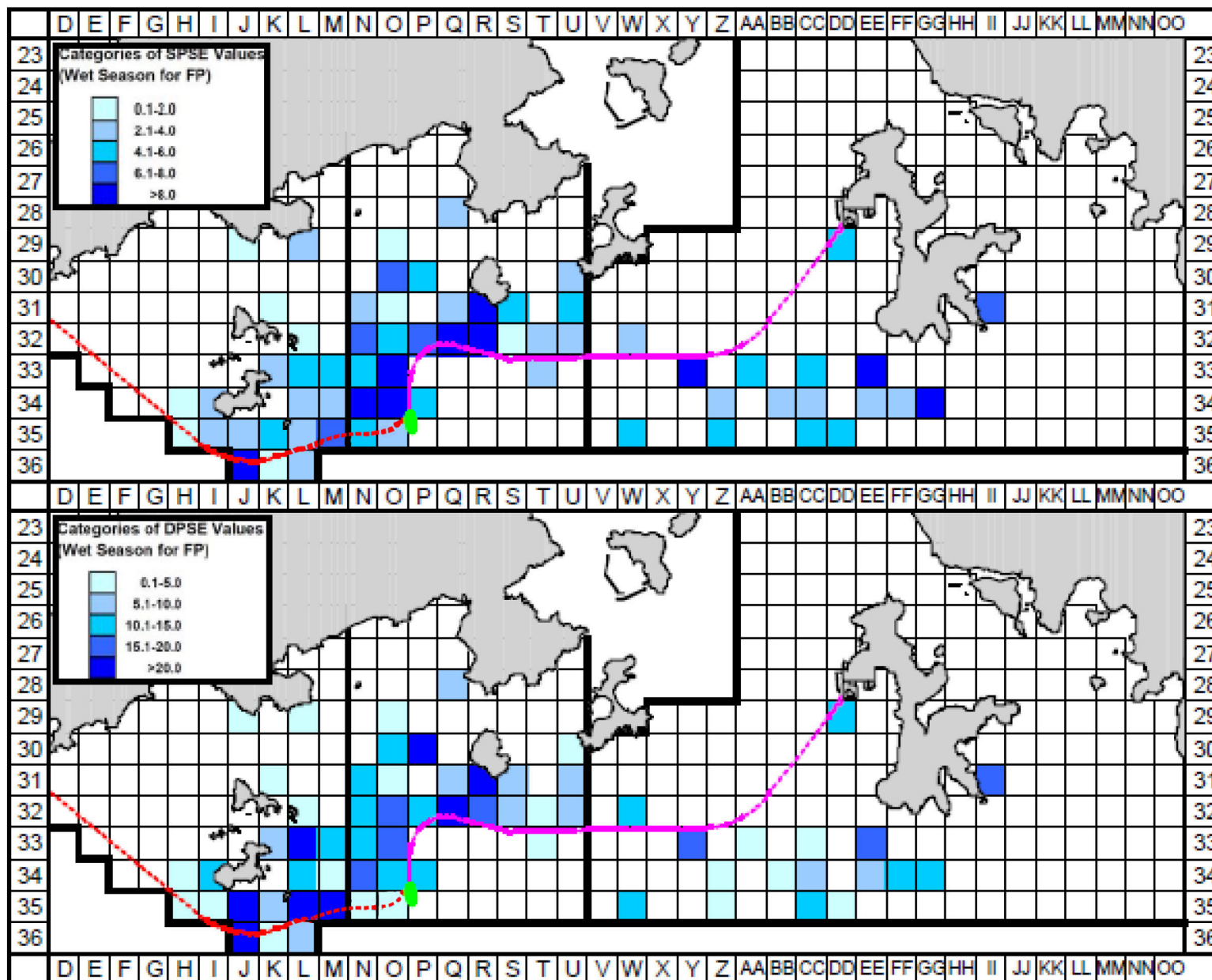


Figure 9D.11

Overall sighting density (top) and overall density (bottom) of finless porpoises with corrected survey effort per km² during the wet season in southern waters of Hong Kong, using data collected during 2007 - 2017

DATE: 8/11/2017

Environmental Resources Management



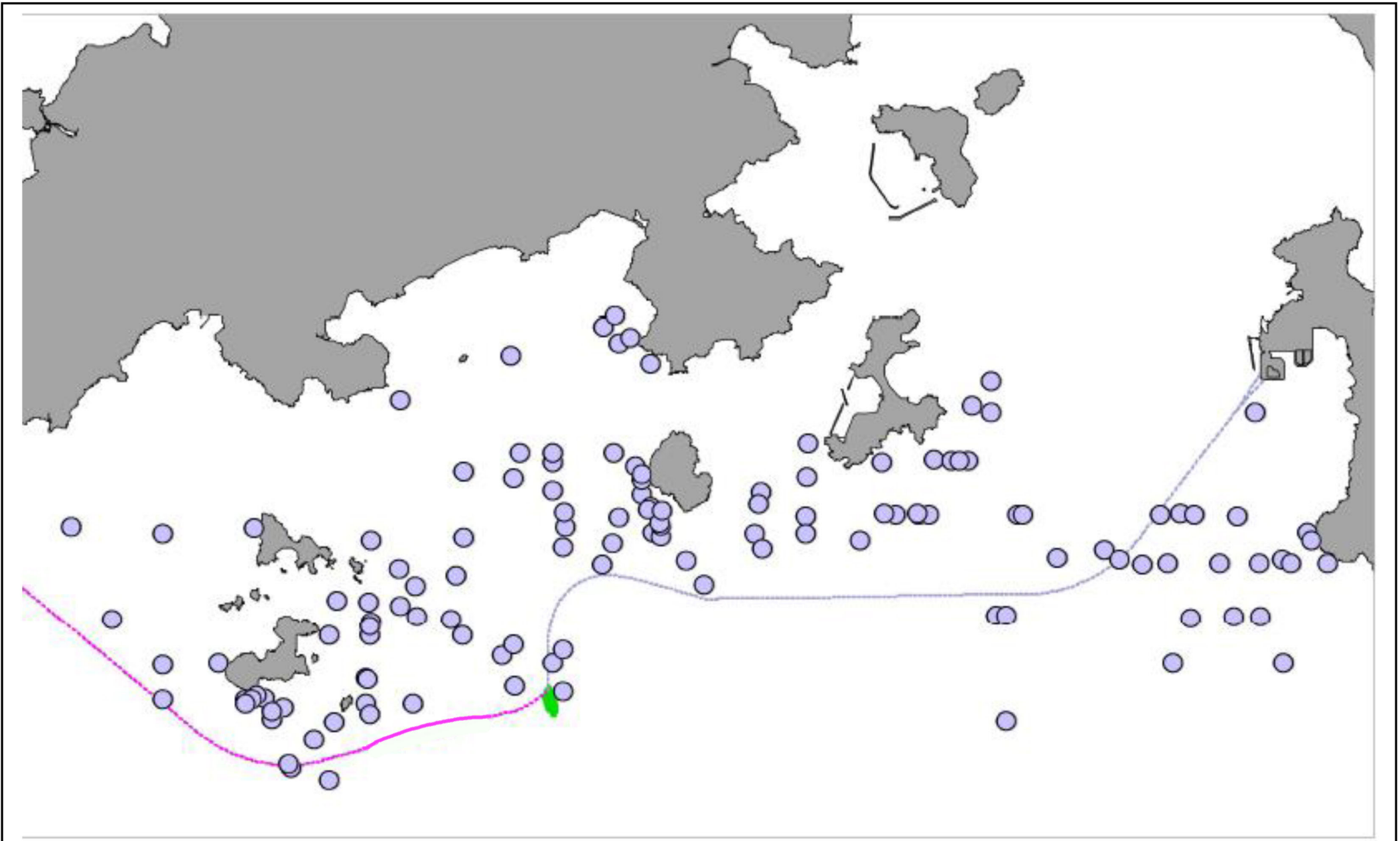


Figure 9D.12

Distribution of Sightings of Large Groups of Finless Porpoises (five or more animals per group) in Southern Waters of Hong Kong in 2007 - 2017

DATE: 8/11/2017

Environmental
Resources
Management



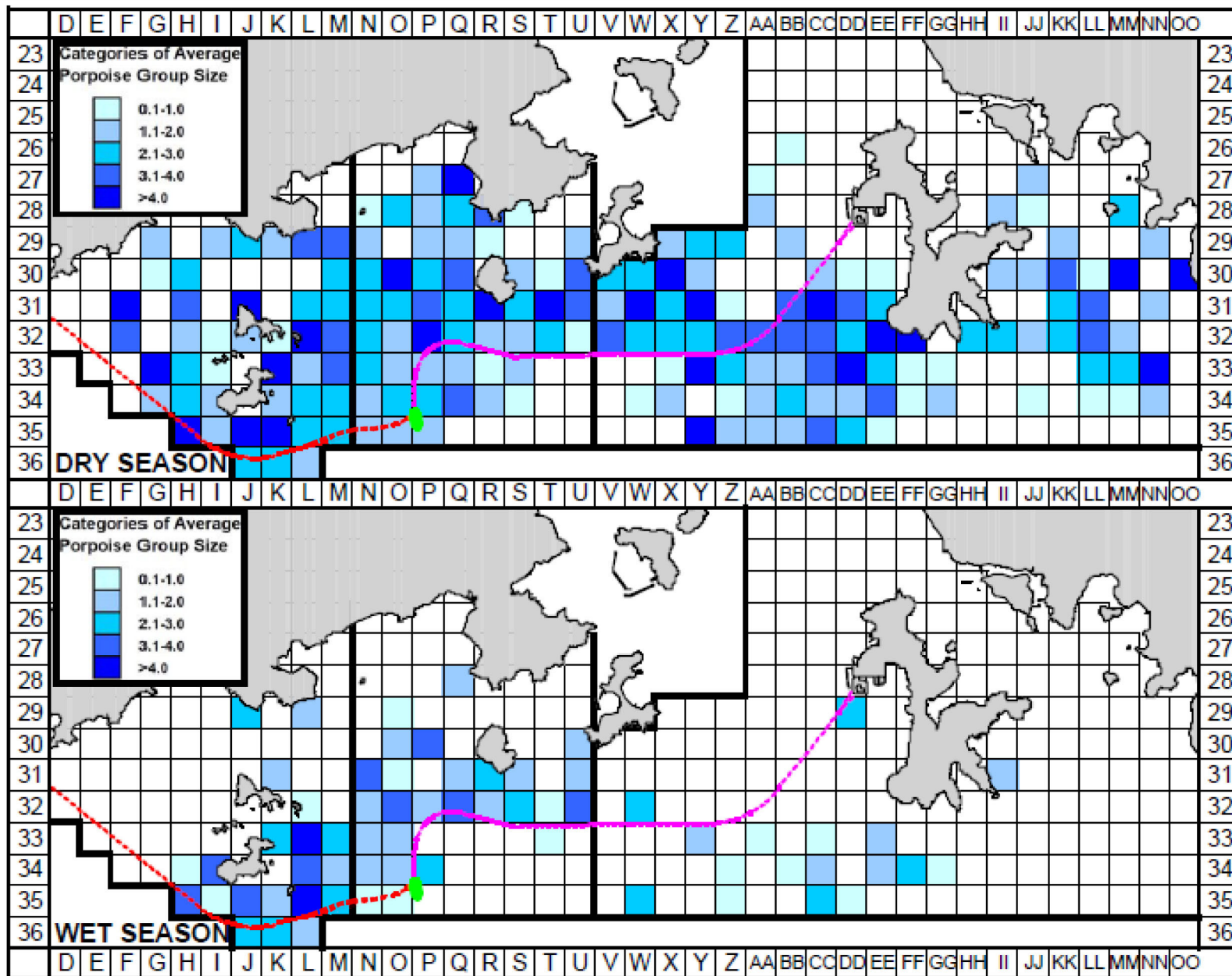


Figure 9D.13

Average group size of finless porpoises in each of the 1-km² grids in southern waters of Hong Kong during dry season (top) and wet season (bottom) in 2007 - 2017

DATE: 8/11/2017

Environmental
Resources
Management

