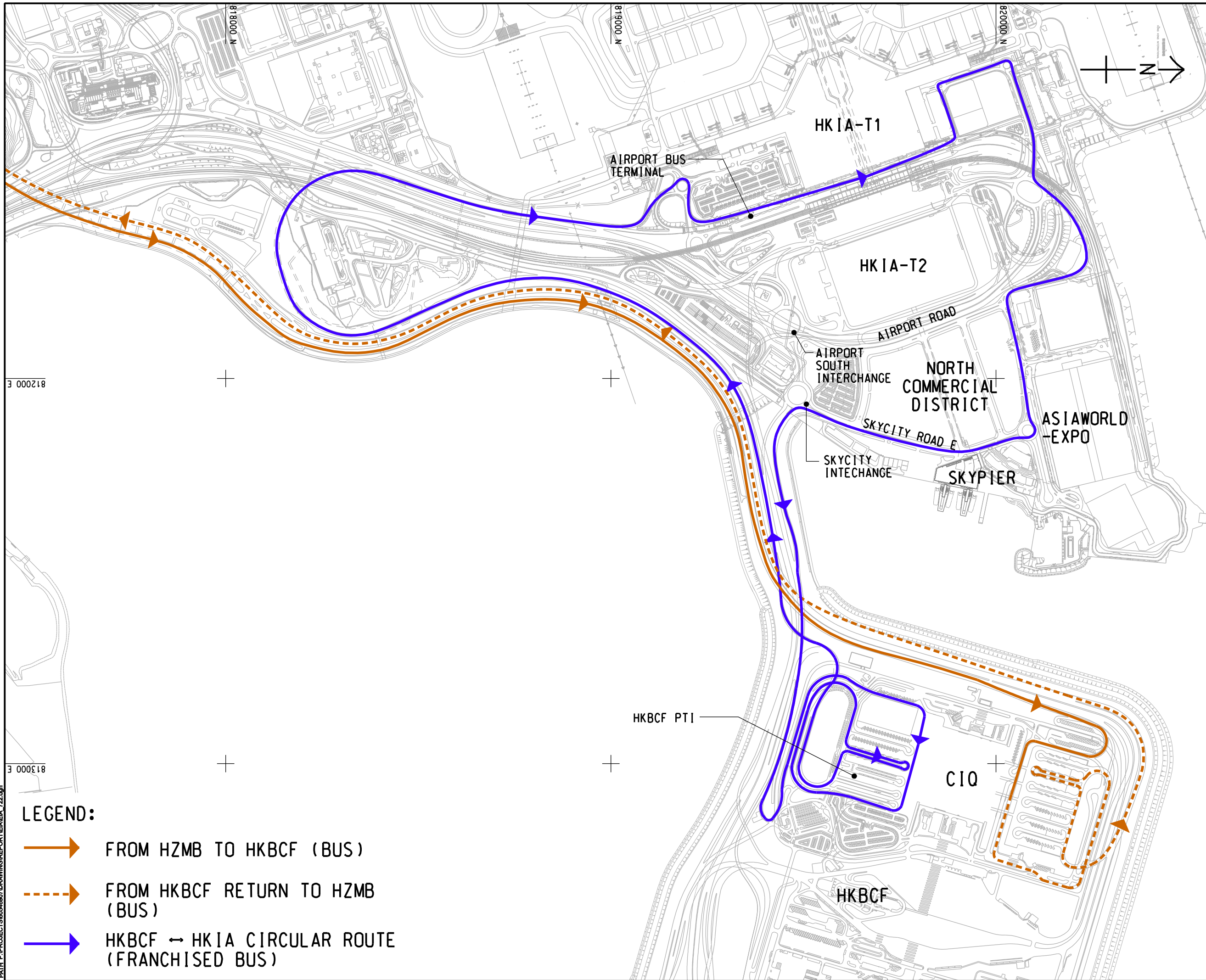


ISO A1 594mm x 841mm
 Approved:
 Checked:
 Designer:
 Project Management Initials:

PdF File by: PENGGW 2018/1/23
 PATH: P:\PROJECTS\60546907\DRAWING\REPORT\EA\EA_T22.dgn



LEGEND:

- FROM HZMB TO HKBCF (BUS)
- FROM HKBCF RETURN TO HZMB (BUS)
- HKBCF ↔ HKIA CIRCULAR ROUTE (FRANCHISED BUS)

AECOM

PROJECT
 項目
**INTERMODAL TRANSFER
 TERMINAL - BONDED
 VEHICULAR BRIDGE
 AND ASSOCIATED ROADS**

CLIENT
 業主

 香港 | AIRPORT
 機場管理局 | AUTHORITY
 HONG KONG

CONSULTANT
 工程顧問公司
 AECOM Asia Company Ltd.
 www.aecom.com

SUB-CONSULTANTS
 分門工程顧問公司

ISSUE/REVISION
 修訂

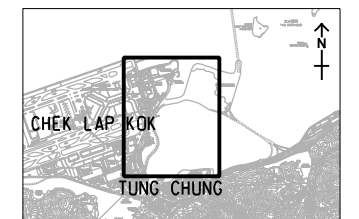
I/R 修訂	DATE 日期	DESCRIPTION 內容摘要	CHK. 校核

STATUS
 階段

SCALE
 比例
 A3 1 : 9000

DIMENSION UNIT
 尺寸單位
 METRES

KEY PLAN A3 1 : 20000
 索引圖



PROJECT NO.
 項目編號
 60546907

AGREEMENT NO.
 協議編號
 C17C03

SHEET TITLE
 圖紙名稱
 ILLUSTRATION OF "WITHOUT
 PROJECT" SCENARIO -
 FRANCHISED BUS APPROACH,
 ROUTE B

SHEET NUMBER
 圖紙編號
 FIGURE 2.2

This drawing has been prepared for the use of AECOM's client. It may not be used, modified, reproduced or relied upon by third parties, except as agreed by AECOM or as required by law. AECOM accepts no responsibility, and denies any liability whatsoever, to any party that uses or relies on this drawing without AECOM's express written consent. Do not scale this document. All measurements must be obtained from the stated dimensions.