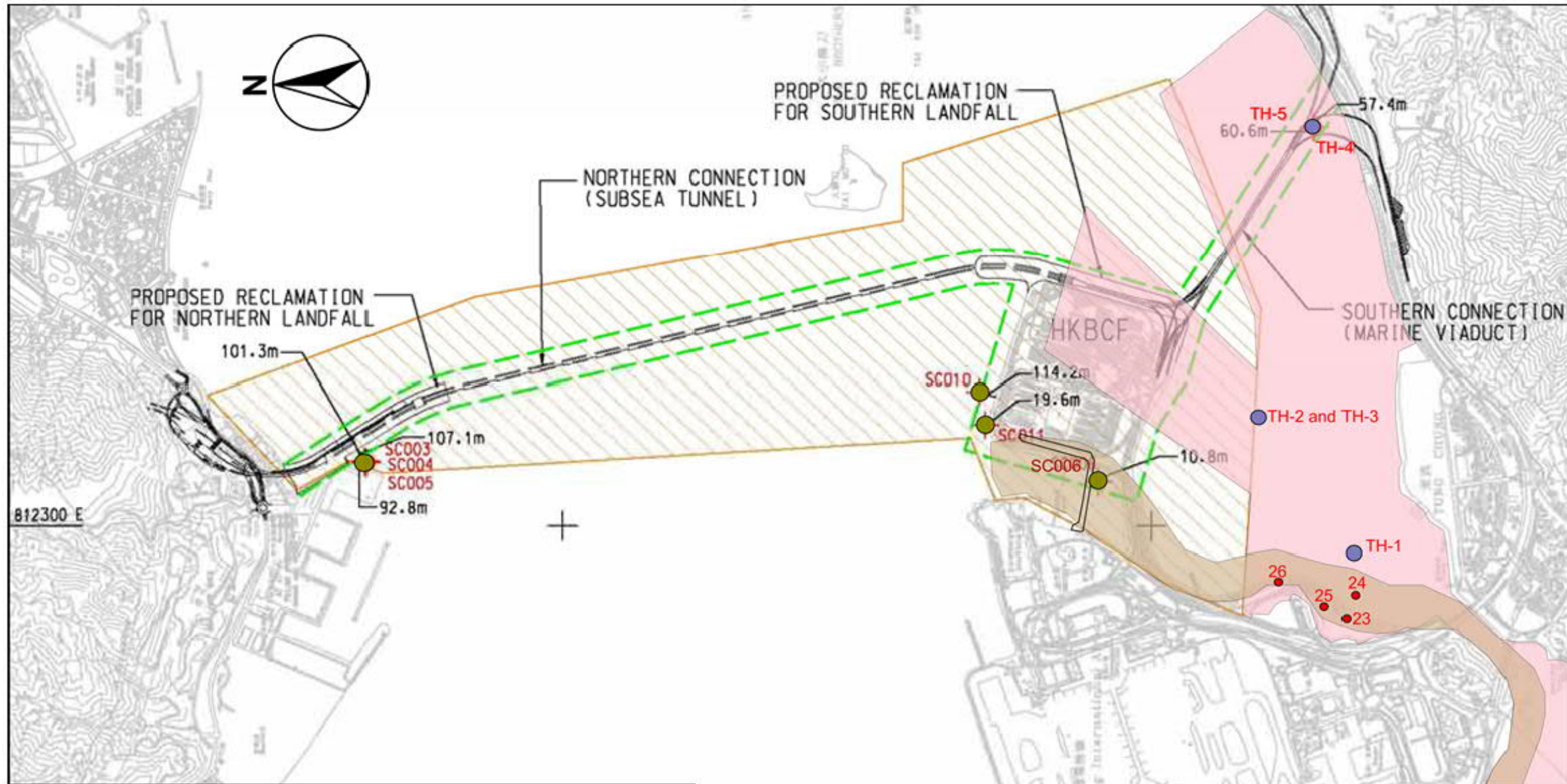


IR	DATE	DESCRIPTION	CHK

This drawing has been prepared for the use of AECOM's client. It may not be used, modified, reproduced or relied upon by third parties, except as agreed by AECOM or as required by law. AECOM accepts no responsibility, and denies any liability whatsoever, to any party that uses or relies on this drawing without AECOM's express written consent. Do not scale this document. All measurements must be obtained from the stated dimensions.



**LEGEND:**

- Project Area
- MAI 2004 Survey Area
- MAI 2008 HZMB-BCF Geophysical Survey Area
- MAI 2008 HZMB-BCF Survey Area
- MAI 2008 HZMB-NLH Survey Area
- Sonar Contact of MAI 2004
- Sonar Contact of MAI 2008 HZMB-BCF
- Sonar Contact of MAI 2008 HZMB-NLH

MAI	Sonar Contact No.	Easting	Northing
MAI 2004	TH-1	811823.09	818000
	TH-2	813182.27	818708.49
	TH-3	813196.74	818735.32
	TH-4	815007.41	818193.21
	TH-5	815006.99	818202.21
MAI 2008 HZMB-BCF	SC003	812736.4	824639.9
	SC004	812731.2	824632.3
	SC005	812728.0	824626.5
	SC006	812594.0	819664.9
	SC010	813205.2	820466.6
	SC011	812981.7	820426.6
MAI 2008 HZMB-NLH	23	811642.8	817896.0
	24	811906.3	817824.1
	25	811823.2	818000.5
	26	811899.8	818366.0