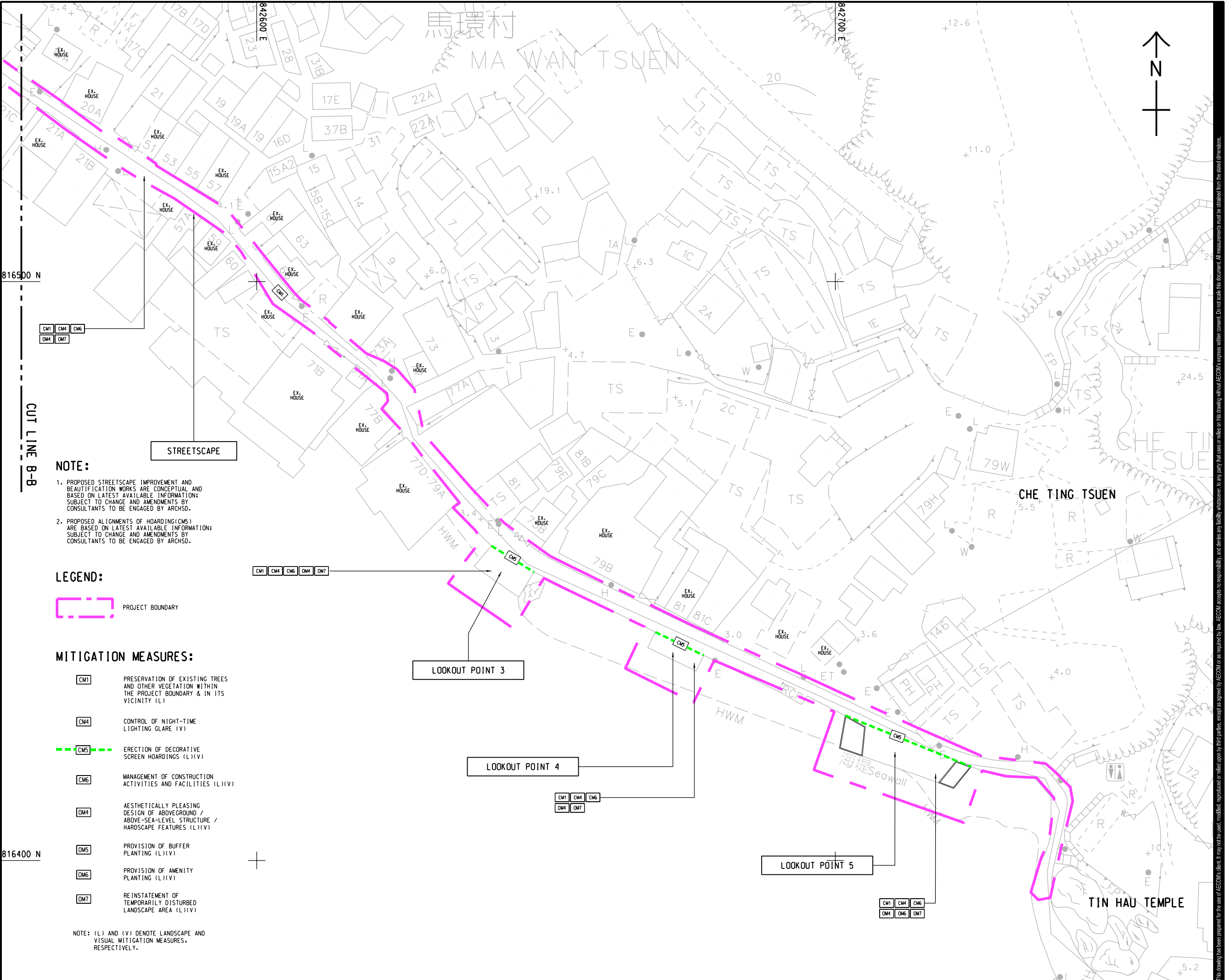


ISO A1 594mm x 841mm
Approved:
Checked:
Designer:
Project Management Initials:
22/06/2018
P:\P\60494885\DRAWING\REPORT\EA1A_764.dgn
Pld File by: Hccc
PATH P:\P\60494885\DRAWING\REPORT\EA1A_764.dgn



NOTE:

1. PROPOSED STREETSCAPE IMPROVEMENT AND BEAUTIFICATION WORKS ARE CONCEPTUAL AND BASED ON LATEST AVAILABLE INFORMATION; SUBJECT TO CHANGE AND AMENDMENTS BY CONSULTANTS TO BE ENGAGED BY ARCHSD.

2. PROPOSED ALIGNMENTS OF HOARDING(CM5) ARE BASED ON LATEST AVAILABLE INFORMATION; SUBJECT TO CHANGE AND AMENDMENTS BY CONSULTANTS TO BE ENGAGED BY ARCHSD.

LEGEND:

PROJECT BOUNDARY

MITIGATION MEASURES:

- CM1** PRESERVATION OF EXISTING TREES AND OTHER VEGETATION WITHIN THE PROJECT BOUNDARY & IN ITS VICINITY (L)
- CM4** CONTROL OF NIGHT-TIME LIGHTING GLARE (V)
- CM5** ERECTION OF DECORATIVE SCREEN HOARDINGS (L)(V)
- CM6** MANAGEMENT OF CONSTRUCTION ACTIVITIES AND FACILITIES (L)(V)
- OM4** AESTHETICALLY PLEASING DESIGN OF ABOVEGROUND / ABOVE-SEA-LEVEL STRUCTURE / HARDSCAPE FEATURES (L)(V)
- OM5** PROVISION OF BUFFER PLANTING (L)(V)
- OM6** PROVISION OF AMENITY PLANTING (L)(V)
- OM7** REINSTATEMENT OF TEMPORARILY DISTURBED LANDSCAPE AREA (L)(V)

NOTE: (L) AND (V) DENOTE LANDSCAPE AND VISUAL MITIGATION MEASURES, RESPECTIVELY.

AECOM

PROJECT

LEI YUE MUN WATERFRONT ENHANCEMENT PROJECT - ENVIRONMENTAL AND TRAFFIC IMPACT ASSESSMENT STUDIES - INVESTIGATION

CLIENT

土木工程拓展署
Civil Engineering and Development Department

CONSULTANT

AECOM Asia Company Ltd.
www.aecom.com

SUB-CONSULTANTS

分判工程顧問公司

ISSUE/REVISION

I/R	DATE	DESCRIPTION	CHK.
001			

STATUS

001

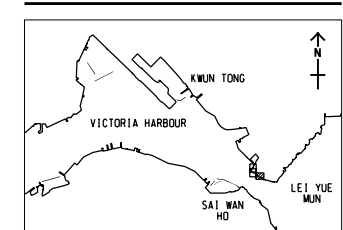
SCALE

A3 1:600

DIMENSION UNIT

METRES

KEY PLAN



PROJECT NO.

60494885

AGREEMENT NO.

60494885

SHEET TITLE

LOCATION PLAN OF MITIGATION MEASURES FOR CONSTRUCTION PHASE (CMS) & OPERATION PHASE (OMS) PART 3

SHEET NUMBER

60494885/EIA/FIGURE 11.6.3