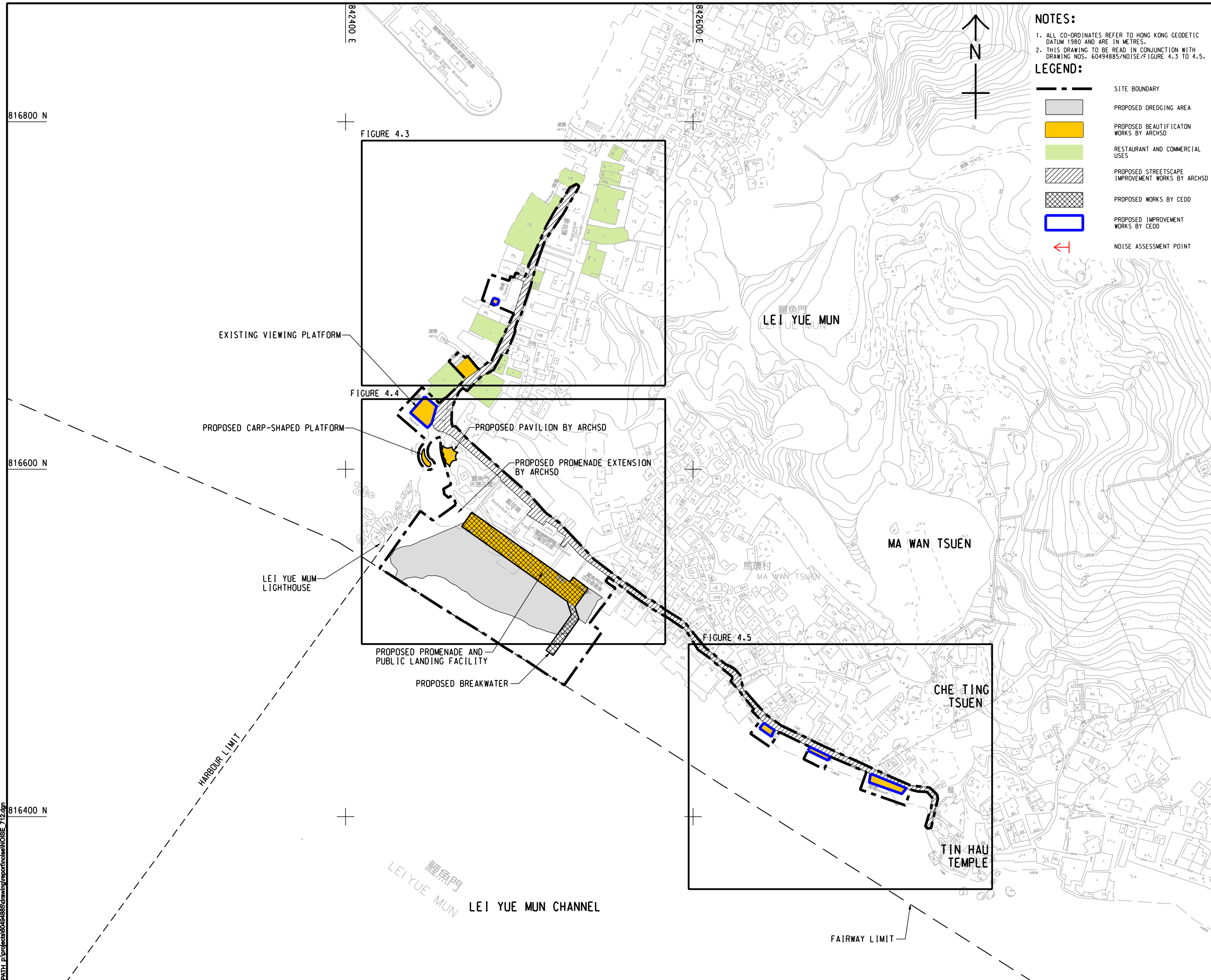


ISO A1 594mm x 841mm
 Approved:
 Checked:
 Designer:
 Project Management Initials:



NOTES:
 1. ALL CO-ORDINATES REFER TO HONG KONG GEODETIC DATUM 1980 AND ARE IN METRES.
 2. THIS DRAWING TO BE READ IN CONJUNCTION WITH DRAWING NOS. 60494885/NOISE/FIGURE 4.3 TO 4.5.

- LEGEND:**
- SITE BOUNDARY
 - PROPOSED DREDGING AREA
 - PROPOSED BEAUTIFICATION WORKS BY ARCHSD
 - RESTAURANT AND COMMERCIAL USES
 - PROPOSED STREETScape IMPROVEMENT WORKS BY ARCHSD
 - PROPOSED WORKS BY CEDD
 - PROPOSED IMPROVEMENT WORKS BY CEDD
 - NOISE ASSESSMENT POINT

AECOM

PROJECT
 項目
LEI YUE MUN WATERFRONT ENHANCEMENT PROJECT - ENVIRONMENTAL AND TRAFFIC IMPACT ASSESSMENT STUDIES - INVESTIGATION

CLIENT
 業主
 土木工程拓展署
 Civil Engineering and Development Department

CONSULTANT
 工程顧問公司
 AECOM Asia Company Ltd.
 www.aecom.com

SUB-CONSULTANTS
 分判工程顧問公司

ISSUE/REVISION
 修訂

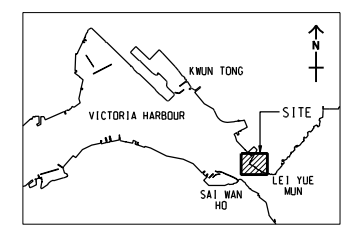
IR	DATE	DESCRIPTION	CHK.

STATUS
 階段

SCALE
 比例
 A3 1:2000

DIMENSION UNIT
 尺寸單位
 METRES

KEY PLAN A3 1:10000
 索引圖



PROJECT NO.
 項目編號
 60494885

AGREEMENT NO.
 協議編號

SHEET TITLE
 圖紙名稱
 LOCATIONS OF NOISE ASSESSMENT POINTS (KEYPLAN)

SHEET NUMBER
 圖紙編號
 60494885/NOISE/FIGURE 4.2

This drawing has been prepared for the use of AECOM's client. It may not be used, modified, reproduced or relied upon by third parties, except as agreed by AECOM in writing. AECOM accepts no responsibility, and denies any liability whatsoever, to any party that uses or relies on this drawing without AECOM's express written consent. All measurements must be obtained from the stated dimensions.

Pld File by: LVP
 2018/05/14
 PATH: F:\projects\60494885\drawing\supercritnoise\NOISE_712.dgn