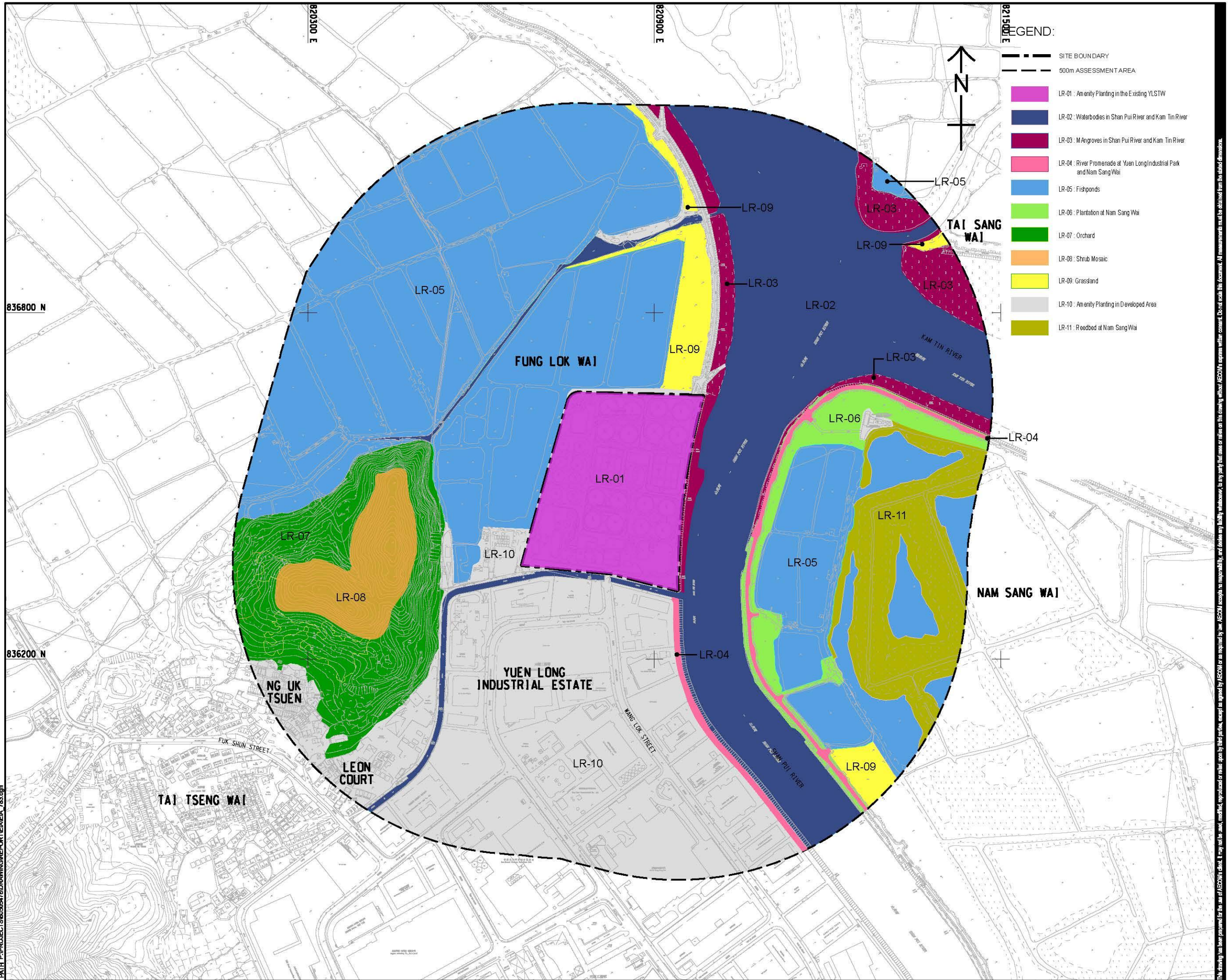


ISO A1 594mm x 841mm
 Approved:
 Checked:
 Designer:
 Project Management Initials:
 836800 N
 836200 N
 Pld File by: ZHONGDY 20171027
 PATH: P:\PROJECTS\60505476\DRAWING\REPORT\EA\EA_789.dgn



- LEGEND:**
- SITE BOUNDARY
 - 500m ASSESSMENT AREA
 - LR-01: Amenity Planting in the Existing YLSTW
 - LR-02: Waterbodies in Shan Pui River and Kam Tin River
 - LR-03: Mangroves in Shan Pui River and Kam Tin River
 - LR-04: River Promenade at Yuen Long Industrial Park and Nam Sang Wai
 - LR-05: Fishponds
 - LR-06: Plantation at Nam Sang Wai
 - LR-07: Orchard
 - LR-08: Shrub Mosaic
 - LR-09: Grassland
 - LR-10: Amenity Planting in Developed Area
 - LR-11: Reedbed at Nam Sang Wai

AECOM

PROJECT
 項目
YUEN LONG EFFLUENT POLISHING PLANT - INVESTIGATION, DESIGN AND CONSTRUCTION

CLIENT
 業主
渠務署
 Drainage Services Department

CONSULTANT
 工程顧問公司
 AECOM Asia Company Ltd.
 www.aecom.com

SUB-CONSULTANTS
 分門工程顧問公司

ISSUE/REVISION
 修訂

IR	DATE	DESCRIPTION	CHK

STATUS
 圖況

SCALE
 比例
 A1 1 : 3000

DIMENSION UNIT
 尺寸單位
 METRES

KEY PLAN
 索引圖

PROJECT NO.
 項目編號
 60505476

CONTRACT NO.
 合約編號
 CE 3/2015 (DS)

SHEET TITLE
 圖名
 LANDSCAPE RESOURCES

SHEET NUMBER
 圖號
 60505476/EIA/FIGURE 10.2

This drawing has been prepared for the use of AECOM's client, and may not be used, modified, reproduced or relied upon by third parties, except as required by AECOM or as required by law. AECOM accepts no responsibility, and disclaims any liability whatsoever, for any party that uses or relies on this drawing without AECOM's express written consent. Do not scale this document. All measurements must be obtained from the stated dimensions.