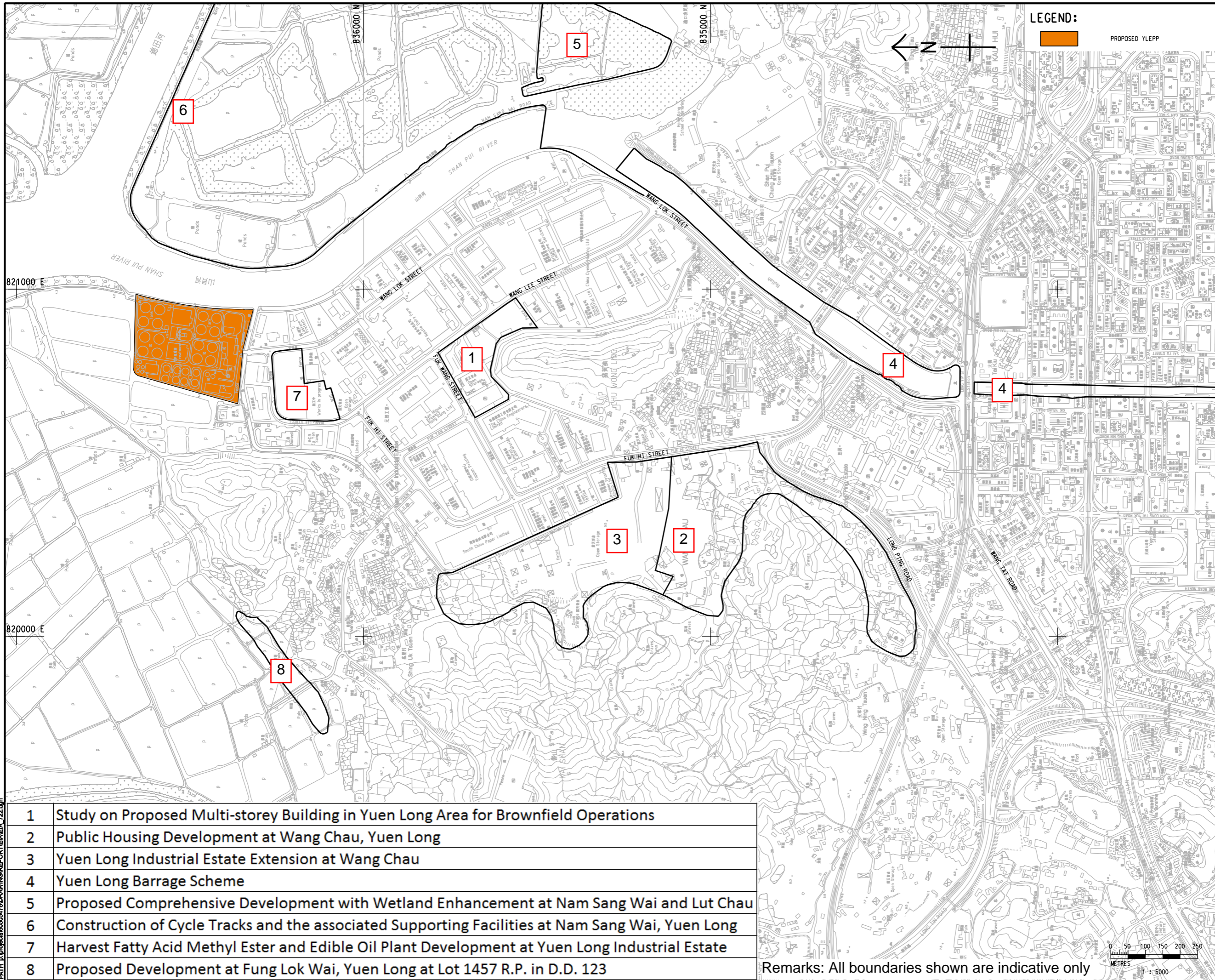


Pict File by: SongYN 11/23/2018 PATH: E:\projects\605476\DRAWING\REPORT\EIA\EA_722.dgn
 Project Management Initials: Designer: Checked: Approved: ISO A1 594mm x 841mm



LEGEND:
 PROPOSED YLEPP

AECOM
PROJECT
YUEN LONG EFFLUENT POLISHING PLANT - INVESTIGATION, DESIGN AND CONSTRUCTION

CLIENT
 渠務署
 Drainage Services Department

CONSULTANT
 AECOM Asia Company Ltd.
 www.aecom.com

SUB-CONSULTANTS
 分判工程師公司

ISSUE/REVISION

NO.	DATE	DESCRIPTION	CHK.

STATUS

SCALE
 1:5000

DIMENSION UNIT
 METRES

KEY PLAN
 索引圖

1	Study on Proposed Multi-storey Building in Yuen Long Area for Brownfield Operations
2	Public Housing Development at Wang Chau, Yuen Long
3	Yuen Long Industrial Estate Extension at Wang Chau
4	Yuen Long Barrage Scheme
5	Proposed Comprehensive Development with Wetland Enhancement at Nam Sang Wai and Lut Chau
6	Construction of Cycle Tracks and the associated Supporting Facilities at Nam Sang Wai, Yuen Long
7	Harvest Fatty Acid Methyl Ester and Edible Oil Plant Development at Yuen Long Industrial Estate
8	Proposed Development at Fung Lok Wai, Yuen Long at Lot 1457 R.P. in D.D. 123

Remarks: All boundaries shown are indicative only

PROJECT NO.
 60505476

CONTRACT NO.
 CE 3/2015 (DS)

SHEET TITLE
 LOCATIONS OF OTHER POSSIBLE CONCURRENT PROJECTS

SHEET NUMBER
 60505476/EIA/FIGURE 2.4

This drawing has been prepared for the use of AECOM's client. It may not be used, modified, reproduced or relied upon by third parties, except as agreed by AECOM in writing. AECOM accepts no responsibility, and disclaims any liability whatsoever, for any party that uses or relies on this drawing without AECOM's express written consent. Do not scale this document. All measurements must be obtained from the stated dimensions.