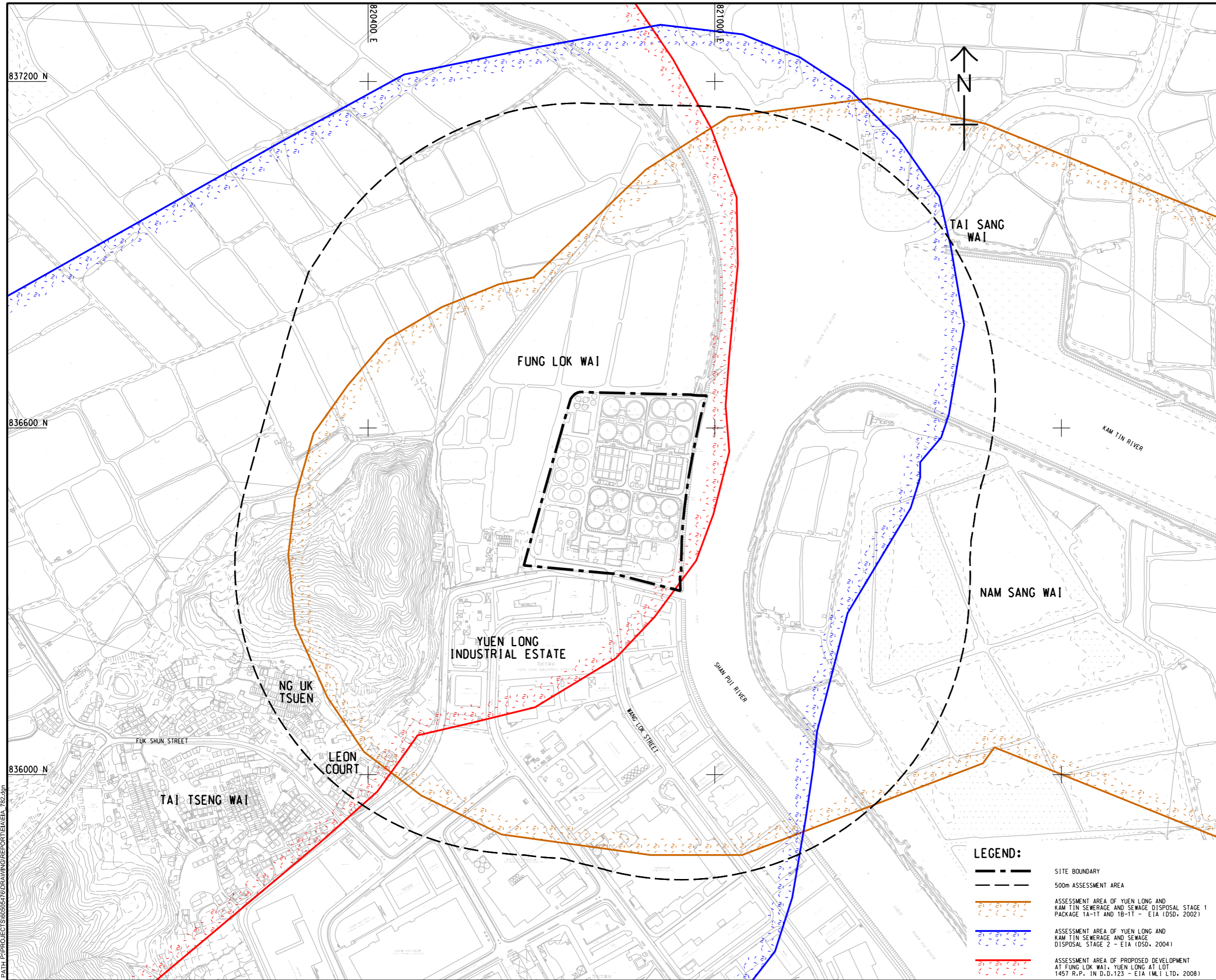


ISO A1 594mm x 841mm
 Approved:
 Checked:
 Designer:
 Project Management Initials:



PROJECT
 項目
YUEN LONG EFFLUENT POLISHING PLANT - INVESTIGATION, DESIGN AND CONSTRUCTION

CLIENT
 業主
 渠務署
 Drainage Services Department

CONSULTANT
 顧問公司
 AECOM Asia Company Ltd.
 www.aecom.com

SUB-CONSULTANTS
 分判工程顧問公司

ISSUE/REVISION
 修訂

IR	DATE	DESCRIPTION	CHK.

STATUS
 狀態

SCALE
 比例尺
 A1 1 : 3000

DIMENSION UNIT
 尺寸單位
 METRES

KEY PLAN
 索引圖

PROJECT NO.
 項目編號
 60505476

CONTRACT NO.
 合約編號
 CE 3/2015 (DS)

SHEET TITLE
 圖名
 ASSESSMENT AREA OF REVIEWED EIA STUDIES

SHEET NUMBER
 圖號
 60505476/EIA/FIGURE 8.2

- LEGEND:**
- SITE BOUNDARY
 - 500m ASSESSMENT AREA
 - ASSESSMENT AREA OF YUEN LONG AND KAM TIN SEWERAGE AND SEWAGE DISPOSAL STAGE 1 PACKAGE 1A-1T AND 1B-1T - EIA (OSD, 2002)
 - ASSESSMENT AREA OF YUEN LONG AND KAM TIN SEWERAGE AND SEWAGE DISPOSAL STAGE 2 - EIA (OSD, 2004)
 - ASSESSMENT AREA OF PROPOSED DEVELOPMENT AT FUNG LOK WAI, YUEN LONG AT LOT 1457 R.P. IN D.D.123 - EIA (MLI LTD, 2008)

Plot File by: CA/CPA 2018/1/9
 PATH P:\PROJECTS\60505476\DRAWING\REPORT\EA\EA_782.dgn

This drawing has been prepared for the use of AECOM's client. It may not be used, modified, reproduced or relied upon by third parties, except as agreed by AECOM or as required by law. AECOM accepts no responsibility, and disclaims any liability whatsoever, for any part, that less or relies on this drawing without AECOM's express written consent. All measurements must be obtained from the stated dimensions.