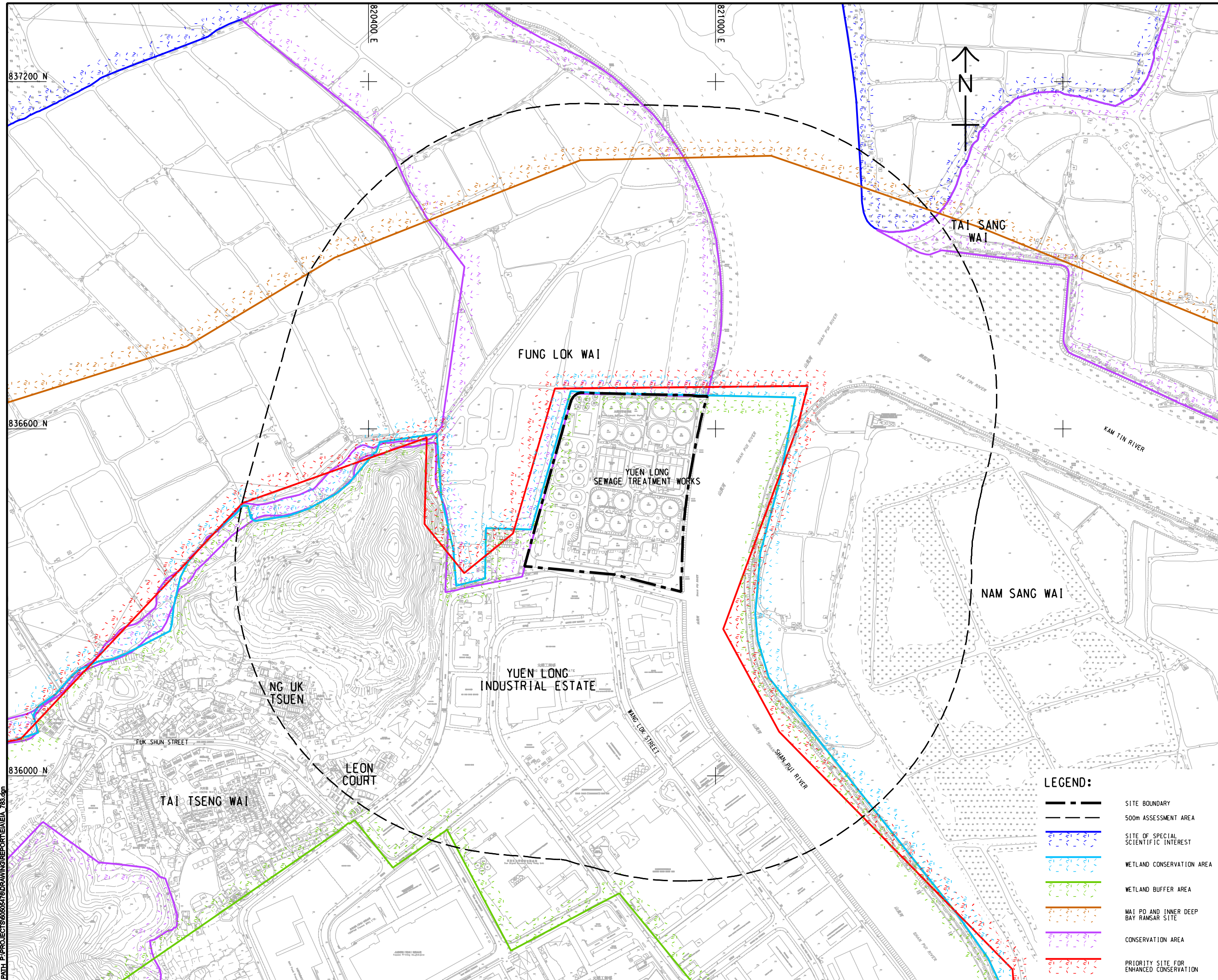


ISO A1 594mm x 841mm
 Approved:
 Checked:
 Designer:
 Project Management Initials:

Plot File by: GaoYU 2016/04/19
 PATH: P:\PROJECTS\60505476\DRAWING\REPORT\EA\EA_783.dgn



LEGEND:

	SITE BOUNDARY
	500m ASSESSMENT AREA
	SITE OF SPECIAL SCIENTIFIC INTEREST
	WETLAND CONSERVATION AREA
	WETLAND BUFFER AREA
	MAI PO AND INNER DEEP BAY RAMSAR SITE
	CONSERVATION AREA
	PRIORITY SITE FOR ENHANCED CONSERVATION

AECOM

PROJECT
 項目
YUEN LONG EFFLUENT POLISHING PLANT - INVESTIGATION, DESIGN AND CONSTRUCTION

CLIENT
 業主
 渠務署
 Drainage Services Department

CONSULTANT
 工程顧問公司
 AECOM Asia Company Ltd.
 www.aecom.com

SUB-CONSULTANTS
 分判工程顧問公司

ISSUE/REVISION
 批註

NO.	DATE	DESCRIPTION	CHK.

STATUS
 階段

SCALE
 比例
 A1 1 : 3000

DIMENSION UNIT
 尺寸單位
 METRES

KEY PLAN
 索引圖

PROJECT NO.
 項目編號
 60505476

CONTRACT NO.
 合約編號
 CE 3/2015 (DS)

SHEET TITLE
 圖紙名稱
 LOCATION OF SITES OF CONSERVATION IMPORTANCE

SHEET NUMBER
 圖紙編號
 60505476/EIA/FIGURE 8.3

This drawing has been prepared for the use of AECOM's client. It may not be used, modified, reproduced or relied upon by third parties, except as agreed by AECOM in writing. AECOM accepts no responsibility, and denies any liability whatsoever, to any party, that uses or relies on this drawing without AECOM's express written consent. Do not scale this document. All measurements must be obtained from the master dimensions.