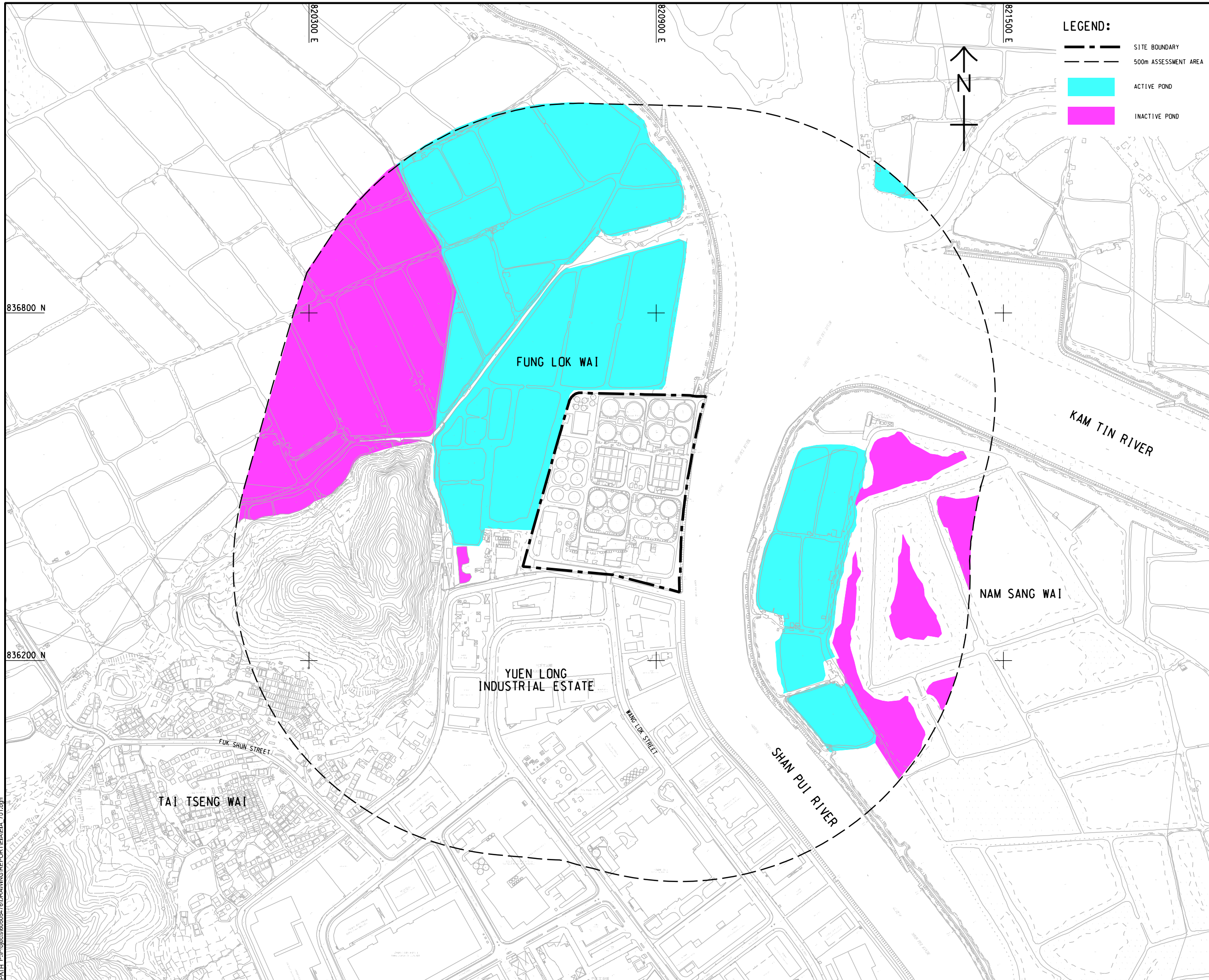


ISO A1 594mm x 841mm
 Approved:
 Checked:
 Designer:
 Project Management Initials:
 836800 N
 836200 N
 Plot File by: woodh1
 PATH: P:\2015\60505476\DRAWING\REPORT\EA\EA_701.dgn



LEGEND:

- SITE BOUNDARY
- 500m ASSESSMENT AREA
- ACTIVE POND
- INACTIVE POND

AECOM

PROJECT
YUEN LONG EFFLUENT POLISHING PLANT - INVESTIGATION, DESIGN AND CONSTRUCTION

CLIENT
 渠務署
 Drainage Services Department

CONSULTANT
 AECOM Asia Company Ltd.
 www.aecom.com

SUB-CONSULTANTS

ISSUE/REVISION

IR	DATE	DESCRIPTION	CHK.

STATUS

SCALE: A1 1:3000
 DIMENSION UNIT: METRES

KEY PLAN

PROJECT NO.: 60505476
 CONTRACT NO.: CE 3/2015 (DS)

SHEET TITLE
 PONDS WITHIN THE ASSESSMENT AREA

SHEET NUMBER
 60505476/EIA/FIGURE 9.2

This drawing has been prepared for the use of AECOM's client. It may not be used, modified, reproduced or relied upon by third parties, except as agreed by AECOM or as required by law. AECOM accepts no responsibility, and denies any liability whatsoever, to any party, that uses or relies on this drawing without AECOM's express written consent. Do not scale this document. All measurements must be obtained from the paper dimensions.