

Calculation of Emission factor for Heavy Construction

E = 1.2 tons/acre/month of activity (ref : AP-42 S13.2.3.3)
 or = 2.69 Mg/hectare/month of activity

Where
 E = TSP Emission Factor

Assume

Mitigated (Working Hours)

Active operating area (%):	100	assumed all works area are in full operation
Mitigation efficiency (%):	91.70%	watering once per hour (Refer to Appendix 3.6 for justification)
E (g/sq.m/day):	0.7442	Assume 30 working days per month and 12 working hours a day
E (g/sq.m/s):	0.00001723	calculated (TSP), 12 working hours per day
	0.00000815	calculated (RSP) (mitigated), 47.3% of TSP
	0.00000124	calculated (FSP) (mitigated), 7.2% of TSP

Unmitigated

Active operating area (%):	100	assumed all works area are in full operation
Mitigation efficiency (%):	0.00%	unmitigated scenario
E (g/sq.m/day):	8.9667	Assume 30 working days per month and 12 working hours a day
E (g/sq.m/s):	0.00020756	calculated (TSP), 12 working hours per day
	0.00009818	calculated (RSP), 47.3% of TSP
	0.00001494	calculated (FSP), 7.2% of TSP

Calculation of Emission factor for Wind Erosion

E = 0.85 Mg/hectare/year (ref : AP-42 S11.9, Table 11.9.4)
 or = 0.2329 g/sqm/day

Where
 E = TSP Emission Factor

Assume

Unmitigated (Non-working Hours)

Active operating area (%):	100	assumed all works area are in full operation
Mitigation efficiency (%):	0.00%	no mitigation measure during non-working hours and unmitigated scenario
E (g/sq.m/hour)	0.009703196	calculated as in AP-42 (without mitigation measure)
E (g/sq.m/s)	0.00000270	calculated (TSP) (unmitigated)
	0.00000127	calculated (RSP), 47.3% of TSP
	0.00000019	calculated (FSP), 7.2% of TSP

Location and Details of Worksites (Dust Sources associated with the Project)

Mitigated Scenario (Year 2021)

Area	Source ID	Source Type	Coordinates of		Dimension (m)		Z (mPD)	Release Height (m)	Angle	TSP Emission Rate (g/s/sq.m)				RSP Emission Rate (g/s/sq.m)				FSP Emission Rate (g/s/sq.m)				Working Hour						
			X1	Y1	X2	Y2				Heavy Construction		Wind Erosion		Heavy Construction		Wind Erosion		Heavy Construction		Wind Erosion		Start Hour	End Hour					
			(m)	(m)	(m)	(m)				Working Hours	Non-working Hours	Working Hours	Non-working Hours	Working Hours	Non-working Hours	Working Hours	Non-working Hours	Working Hours	Non-working Hours	Working Hours	Non-working Hours							
Area 1	W1A01	AREA	837788.9	835729.3	38.8	39.9	20	0	25.5	0.00020756				0.000002695	0.00009818					0.00000127	0.00001494					0.000000194	0700	1900
	W1A02	AREA	837750.8	835737.1	25.3	54.1	10	3	43.5	0.00020756				0.00000270	0.00009818					0.00000127	0.00001494					0.00000019	0700	1900
	W1A03	AREA	837708.9	835714.7	15.9	50	10	3	61.7	0.00020756				0.00000270	0.00009818					0.00000127	0.00001494					0.00000019	0700	1900
	W1A04	AREA	837700.2	835673.3	42.6	89.1	20	0	89.9	0.00020756				0.00000270	0.00009818					0.00000127	0.00001494					0.00000019	0700	1900
	W1A05	AREA	837780.2	835693.8	60.8	128.6	35	0	89	0.00020756				0.00000270	0.00009818					0.00000127	0.00001494					0.00000019	0700	1900
	W1A06	AREA	837711.4	835683.2	34.2	109.6	25	0	62.7	0.00020756				0.00000270	0.00009818					0.00000127	0.00001494					0.00000019	0700	1900
	W1A07	AREA	837817.6	835696.9	82.8	56.9	20	0	16.5	0.00020756				0.00000270	0.00009818					0.00000127	0.00001494					0.00000019	0700	1900
	W1B01	AREA	837699.9	835539.7	91.1	91.1	19	0	0.2	0.00020756				0.00000270	0.00009818					0.00000127	0.00001494					0.00000019	0700	1900
	W1B02	AREA	837789.9	835632	95.9	121.1	37	0	88.9	0.00020756				0.00000270	0.00009818					0.00000127	0.00001494					0.00000019	0700	1900
	W1C01	AREA	837700.3	835541.2	49.1	91.2	15	0	89.7	0.00020756				0.00000270	0.00009818					0.00000127	0.00001494					0.00000019	0700	1900
	W1C02	AREA	837791.6	835504.5	117.6	34.9	25	0	0.3	0.00020756				0.00000270	0.00009818					0.00000127	0.00001494					0.00000019	0700	1900
	W1C03	AREA	837791.6	835454.9	115.7	49.6	15	0	0.4	0.00020756				0.00000270	0.00009818					0.00000127	0.00001494					0.00000019	0700	1900
	W1D01	AREA	838038.7	835680.5	127.1	21.5	21	0	22.1	0.00020756				0.00000270	0.00009818					0.00000127	0.00001494					0.00000019	0700	1900
	W1D02	AREA	838153.6	835627.1	129	27.6	20	0	23.3	0.00020756				0.00000270	0.00009818					0.00000127	0.00001494					0.00000019	0700	1900
	W1D03	AREA	838260.5	835575.3	97.9	34.5	17	0	40.8	0.00020756				0.00000270	0.00009818					0.00000127	0.00001494					0.00000019	0700	1900
	W1D04	AREA	838327.1	835517.4	66.7	36.1	14	0	56.2	0.00020756				0.00000270	0.00009818					0.00000127	0.00001494					0.00000019	0700	1900
	W1E01	AREA	838287	834828.7	67	173.7	10	0	48.7	0.00020756				0.00000270	0.00009818					0.00000127	0.00001494					0.00000019	0700	1900
	W1E02	AREA	838413.4	834923.1	48.5	106.4	10	0	10.3	0.00020756				0.00000270	0.00009818					0.00000127	0.00001494					0.00000019	0700	1900
	W1E03	AREA	838432.8	835246.5	227.6	37.6	8	0	89	0.00020756				0.00000270	0.00009818					0.00000127	0.00001494					0.00000019	0700	1900
	W1G01	AREA	837904.5	835681.7	75.5	46.2	20	0	6.1	0.00020756				0.00000270	0.00009818					0.00000127	0.00001494					0.00000019	0700	1900
	W1G02	AREA	837973.3	835687	74.9	41.3	19	0	24	0.00020756				0.00000270	0.00009818					0.00000127	0.00001494					0.00000019	0700	1900
	W1G03	AREA	837908.7	835681.2	46.7	131.1	25	0	89	0.00020756				0.00000270	0.00009818					0.00000127	0.00001494					0.00000019	0700	1900
	W1G04	AREA	838040.1	835670.7	33.1	82.7	20	0	89.5	0.00020756				0.00000270	0.00009818					0.00000127	0.00001494					0.00000019	0700	1900
	W1H01	AREA	837909.7	835633.8	101.2	131.7	30	0	88.1	0.00020756				0.00000270	0.00009818					0.00000127	0.00001494					0.00000019	0700	1900
	W1H02	AREA	838041.4	835637.5	103.9	81.9	25	0	88.8	0.00020756				0.00000270	0.00009818					0.00000127	0.00001494					0.00000019	0700	1900
	W1I01	AREA	837908.7	835493.4	186.2	43.6	25	0	0.4	0.00020756				0.00000270	0.00009818					0.00000127	0.00001494					0.00000019	0700	1900
	W1I02	AREA	837908	835493.9	43.1	61.8	15	0	89.6	0.00020756				0.00000270	0.00009818					0.00000127	0.00001494					0.00000019	0700	1900
	W1I03	AREA	837969.2	835495.4	96.4	105.8	25	0	89.5	0.00020756				0.00000270	0.00009818					0.00000127	0.00001494					0.00000019	0700	1900
	W1I04	AREA	837912.3	835421.8	57.3	29	10	0	0.2	0.00020756				0.00000270	0.00009818					0.00000127	0.00001494					0.00000019	0700	1900
	Area 2	W2A01	AREA	837970.4	835399	114.4	115.4	23	0	90.2	0.00020756				0.00000270	0.00009818					0.00000127	0.00001494					0.00000019	0700
W2A02		AREA	838075	835496.4	96.4	102.3	35	0	90.4	0.00020756				0.00000270	0.00009818					0.00000127	0.00001494					0.00000019	0700	1900
W2A03		AREA	838153.8	835235.7	37.7	90.6	35	0	89.1	0.00020756				0.00000270	0.00009818					0.00000127	0.00001494					0.00000019	0700	1900
W2A04		AREA	838201	835199.3	51.1	43.4	35	0	89.9	0.00020756				0.00000270	0.00009818					0.00000127	0.00001494					0.00000019	0700	1900
W2A05		AREA	838084.7	835400.2	123.7	157.3	40	0	88.9	0.00020756				0.00000270	0.00009818					0.00000127	0.00001494					0.00000019	0700	1900
W2A06		AREA	838104.7	835276.8	42.5	138.9	40	0	88.9	0.00020756				0.00000270	0.00009818					0.00000127	0.00001494					0.00000019	0700	1900
W2B01		AREA	838083.3	835491.8	138.2	153.1	35	0	21.5	0.00020756				0.00000270	0.00009818					0.00000127	0.00001494					0.00000019	0700	1900
W2B02		AREA	838156.9	835464.6	62.3	230.6	30	0	89.2	0.00020756				0.00000270	0.00009818					0.00000127	0.00001494					0.00000019	0700	1900
W2B03		AREA	838208.3	835402.3	69.4	206.9	30	0	89.1	0.00020756				0.00000270	0.00009818					0.00000127	0.00001494					0.00000019	0700	1900
W2B04		AREA	838198.1	835495.4	72.3	103.2	25	0	41.5	0.00020756				0.00000270	0.00009818					0.00000127	0.00001494					0.00000019	0700	1900
W2B05		AREA	838265	835484.8	66.9	66.5	20	0	52.1	0.00020756				0.00000270	0.00009818					0.00000127	0.00001494					0.00000019	0700	1900
W2C01		AREA	838244.4	835242.8	203.5	93.3	30	0	0	0.00020756				0.00000270	0.00009818					0.00000127	0.00001494					0.00000019	0700	1900
W2C02		AREA	838244.4	835242.8	97.6	209.4	30	0	90	0.00020756				0.00000270	0.00009818					0.00000127	0.00001494					0.00000019	0700	1900
W2C03		AREA	838271.9	835145.3	37.6	182.7	25	0	90	0.00020756				0.00000270	0.00009818					0.00000127	0.00001494					0.00000019	0700	1900
W2C04		AREA	838317.6	835107.7	44	137.8	25	0	90	0.00020756				0.00000270	0.00009818					0.00000127	0.00001494					0.00000019	0700	1900
W2C05		AREA	838370.3	835063.7	33.8	85.7	20	0	90	0.00020756				0.00000270	0.00009818					0.00000127	0.00001494					0.00000019	0700	1900
W2C06		AREA	838419.7	835029.9	34.3	36.9	14	0	90	0.00020756				0.00000270	0.00009818					0.00000127	0.00001494					0.00000019	0700	1900
W2D01		AREA	838365.2	835465.2	68.8	26	11	0	64.2	0.00020756				0.00000270	0.00009818					0.00000127	0.00001494					0.00000019	0700	1900
W2D02		AREA	838397.5	835404.9	79.5	23.9	8	0	64.6	0.00020756				0.00000270	0.00009818					0.00000127	0.00001494					0.00000019	0700	1900
W2D03		AREA	838430.8	835333.2	52.2	25.1	8	0	70	0.00020756				0.00000270	0.00009818					0.00000127	0.00001494			</				

Location and Details of Worksites (Dust Sources associated with the Project)

Mitigated Scenario (Year 2022)

Area	Source ID	Source Type	Coordinates of		Dimension (m)		Z (mPD)	Release Height (m)	Angle	TSP Emission Rate (g/s/sq.m)				RSP Emission Rate (g/s/sq.m)				FSP Emission Rate (g/s/sq.m)				Working Hour	
			X1	Y1	X2	Y2				Heavy Construction		Wind Erosion		Heavy Construction		Wind Erosion		Heavy Construction		Wind Erosion		Start Hour	End Hour
			(m)	(m)	(m)	(m)				Working Hours	Non-working Hours	Working Hours	Non-working Hours	Working Hours	Non-working Hours	Working Hours	Non-working Hours	Working Hours	Non-working Hours	Working Hours	Non-working Hours		
Area 2	W2A01	AREA	837970.4	835399	114.4	115.4	23	0	90.2	0.00020756			0.0000270	0.00009818			0.00000127	0.00001494			0.00000019	0700	1900
	W2A02	AREA	838075	835496.4	96.4	102.3	35	0	90.4	0.00020756			0.0000270	0.00009818			0.00000127	0.00001494			0.00000019	0700	1900
	W2A03	AREA	838153.8	835235.7	37.7	90.6	35	0	89.1	0.00020756			0.0000270	0.00009818			0.00000127	0.00001494			0.00000019	0700	1900
	W2A04	AREA	838201	835199.3	51.1	43.4	35	0	89.9	0.00020756			0.0000270	0.00009818			0.00000127	0.00001494			0.00000019	0700	1900
	W2A05	AREA	838084.7	835400.2	123.7	157.3	40	0	88.9	0.00020756			0.0000270	0.00009818			0.00000127	0.00001494			0.00000019	0700	1900
	W2A06	AREA	838104.7	835276.8	42.5	138.9	40	0	88.9	0.00020756			0.0000270	0.00009818			0.00000127	0.00001494			0.00000019	0700	1900
	W2B01	AREA	838083.3	835491.8	138.2	153.1	35	0	21.5	0.00020756			0.0000270	0.00009818			0.00000127	0.00001494			0.00000019	0700	1900
	W2B02	AREA	838156.9	835464.6	62.3	230.6	30	0	89.2	0.00020756			0.0000270	0.00009818			0.00000127	0.00001494			0.00000019	0700	1900
	W2B03	AREA	838208.3	835402.3	69.4	206.9	30	0	89.1	0.00020756			0.0000270	0.00009818			0.00000127	0.00001494			0.00000019	0700	1900
	W2B04	AREA	838198.1	835495.4	72.3	103.2	25	0	41.5	0.00020756			0.0000270	0.00009818			0.00000127	0.00001494			0.00000019	0700	1900
	W2B05	AREA	838265	835484.8	66.9	66.5	20	0	52.1	0.00020756			0.0000270	0.00009818			0.00000127	0.00001494			0.00000019	0700	1900
	W2C01	AREA	838244.4	835242.8	203.5	93.3	30	0	0	0.00020756			0.0000270	0.00009818			0.00000127	0.00001494			0.00000019	0700	1900
	W2C02	AREA	838244.4	835242.8	97.6	209.4	30	0	90	0.00020756			0.0000270	0.00009818			0.00000127	0.00001494			0.00000019	0700	1900
	W2C03	AREA	838271.9	835145.3	37.6	182.7	25	0	90	0.00020756			0.0000270	0.00009818			0.00000127	0.00001494			0.00000019	0700	1900
	W2C04	AREA	838317.6	835107.7	44	137.8	25	0	90	0.00020756			0.0000270	0.00009818			0.00000127	0.00001494			0.00000019	0700	1900
	W2C05	AREA	838370.3	835063.7	33.8	85.7	20	0	90	0.00020756			0.0000270	0.00009818			0.00000127	0.00001494			0.00000019	0700	1900
	W2C06	AREA	838419.7	835029.9	34.3	36.9	14	0	90	0.00020756			0.0000270	0.00009818			0.00000127	0.00001494			0.00000019	0700	1900
	W2D01	AREA	838365.2	835465.2	68.8	26	11	0	64.2	0.00020756			0.0000270	0.00009818			0.00000127	0.00001494			0.00000019	0700	1900
	W2D02	AREA	838397.5	835404.9	79.5	23.9	8	0	64.6	0.00020756			0.0000270	0.00009818			0.00000127	0.00001494			0.00000019	0700	1900
	W2D03	AREA	838430.8	835333.2	52.2	25.1	8	0	70	0.00020756			0.0000270	0.00009818			0.00000127	0.00001494			0.00000019	0700	1900
W2D04	AREA	838452.1	835288.4	191.3	20	8	0	89	0.00020756			0.0000270	0.00009818			0.00000127	0.00001494			0.00000019	0700	1900	
Area 3	W3A01	AREA	837952.5	835234.9	153	50.2	20	0	0	0.00020756			0.0000270	0.00009818			0.00000127	0.00001494			0.00000019	0700	1900
	W3A02	AREA	837966.6	835107.7	186.5	126.1	20	0	0.5	0.00020756			0.0000270	0.00009818			0.00000127	0.00001494			0.00000019	0700	1900
	W3A04	AREA	838152.5	835109.4	68.6	89.1	35	0	0.5	0.00020756			0.0000270	0.00009818			0.00000127	0.00001494			0.00000019	0700	1900
	W3D01	AREA	838454.8	834992.2	19.7	104.3	8	0	0	0.00020756			0.0000270	0.00009818			0.00000127	0.00001494			0.00000019	0700	1900
	W3D02	AREA	838450.9	834956.5	19.5	38.1	8	0	6.3	0.00020756			0.0000270	0.00009818			0.00000127	0.00001494			0.00000019	0700	1900
	W3D03	AREA	838429	834919.7	24.6	47.8	8	0	24.3	0.00020756			0.0000270	0.00009818			0.00000127	0.00001494			0.00000019	0700	1900
	W3F01	AREA	837968.8	835107.9	111.7	253.9	20	0	89.6	0.00020756			0.0000270	0.00009818			0.00000127	0.00001494			0.00000019	0700	1900

Location and Details of Worksites (Dust Sources associated with the Project)

Mitigated Scenario (Year 2023)

Area	Source ID	Source Type	Coordinates of		Dimension (m)		Z (mPD)	Release Height (m)	Angle	TSP Emission Rate (g/s/sq.m)				RSP Emission Rate (g/s/sq.m)				FSP Emission Rate (g/s/sq.m)				Working Hour	
			X1	Y1	X2	Y2				Heavy Construction		Wind Erosion		Heavy Construction		Wind Erosion		Heavy Construction		Wind Erosion		Start Hour	End Hour
			(m)	(m)	(m)	(m)				Working Hours	Non-working Hours	Working Hours	Non-working Hours	Working Hours	Non-working Hours	Working Hours	Non-working Hours	Working Hours	Non-working Hours	Working Hours	Non-working Hours		
Area 3	W3B01	AREA	838007.6	834997.4	31.4	214.1	25	0	90.1	0.00020756			0.0000270	0.00009818			0.0000127	0.00001494			0.00000019	0700	1900
	W3B02	AREA	837964.4	834716.8	257.3	248.8	20	0	0	0.00020756			0.0000270	0.00009818			0.0000127	0.00001494			0.00000019	0700	1900
	W3C01	AREA	838221.8	835148.9	151.6	52.6	30	0	89.9	0.00020756			0.0000270	0.00009818			0.0000127	0.00001494			0.00000019	0700	1900
	W3C02	AREA	838274.9	834997.4	42.4	110.2	30	0	0.2	0.00020756			0.0000270	0.00009818			0.0000127	0.00001494			0.00000019	0700	1900
	W3C03	AREA	838317.6	835063.7	205	52.8	25	0	90	0.00020756			0.0000270	0.00009818			0.0000127	0.00001494			0.00000019	0700	1900
	W3C04	AREA	838370.4	835029.9	124.3	49.3	20	0	90	0.00020756			0.0000270	0.00009818			0.0000127	0.00001494			0.00000019	0700	1900
	W3C05	AREA	838221.8	834997	242	95.8	20	0	89.9	0.00020756			0.0000270	0.00009818			0.0000127	0.00001494			0.00000019	0700	1900
	W3C06	AREA	838419.7	834995.6	59.6	34.9	10	0	89.3	0.00020756			0.0000270	0.00009818			0.0000127	0.00001494			0.00000019	0700	1900
	W3D01	AREA	838454.8	834992.2	19.7	104.3	8	0	0	0.00020756			0.0000270	0.00009818			0.0000127	0.00001494			0.00000019	0700	1900
	W3D02	AREA	838450.9	834956.5	19.5	38.1	8	0	6.3	0.00020756			0.0000270	0.00009818			0.0000127	0.00001494			0.00000019	0700	1900
	W3D03	AREA	838429	834919.7	24.6	47.8	8	0	24.3	0.00020756			0.0000270	0.00009818			0.0000127	0.00001494			0.00000019	0700	1900
	W3F01	AREA	837968.8	835107.9	111.7	253.9	20	0	89.6	0.00020756			0.0000270	0.00009818			0.0000127	0.00001494			0.00000019	0700	1900

Location and Details of Worksites (Dust Sources associated with the Project)

Mitigated Scenario (Year 2021)

Area	Source ID	Source Type	Coordinates of		Dimension (m)		Z	Release Height	Angle	TSP Emission Rate (g/s/sq.m)				RSP Emission Rate (g/s/sq.m)				FSP Emission Rate (g/s/sq.m)				Working Hour						
			X1	Y1	X2	Y2				Heavy Construction		Wind Erosion		Heavy Construction		Wind Erosion		Heavy Construction		Wind Erosion		Start Hour	End Hour					
			(m)	(m)	(m)	(m)				(mPD)	(m)	Working Hours	Non-working Hours	Working Hours	Non-working Hours	Working Hours	Non-working Hours	Working Hours	Non-working Hours	Working Hours	Non-working Hours			Working Hours	Non-working Hours			
Area 1	W1A01	AREA	837788.9	835729.3	38.8	39.9	20	0	25.5	0.00001723				0.00000270	0.00000815					0.00000127	0.00000124					0.00000019	0700	1900
	W1A02	AREA	837750.8	835737.1	25.3	54.1	10	3	43.5	0.00001723				0.00000270	0.00000815					0.00000127	0.00000124					0.00000019	0700	1900
	W1A03	AREA	837708.9	835714.7	15.9	50	10	3	61.7	0.00001723				0.00000270	0.00000815					0.00000127	0.00000124					0.00000019	0700	1900
	W1A04	AREA	837700.2	835673.3	42.6	89.1	20	0	89.9	0.00001723				0.00000270	0.00000815					0.00000127	0.00000124					0.00000019	0700	1900
	W1A05	AREA	837780.2	835693.8	60.8	128.6	35	0	89	0.00001723				0.00000270	0.00000815					0.00000127	0.00000124					0.00000019	0700	1900
	W1A06	AREA	837711.4	835683.2	34.2	109.6	25	0	62.7	0.00001723				0.00000270	0.00000815					0.00000127	0.00000124					0.00000019	0700	1900
	W1A07	AREA	837817.6	835696.9	82.8	56.9	20	0	16.5	0.00001723				0.00000270	0.00000815					0.00000127	0.00000124					0.00000019	0700	1900
	W1B01	AREA	837699.9	835539.7	91.1	91.1	19	0	0.2	0.00001723				0.00000270	0.00000815					0.00000127	0.00000124					0.00000019	0700	1900
	W1B02	AREA	837789.9	835632	95.9	121.1	37	0	88.9	0.00001723				0.00000270	0.00000815					0.00000127	0.00000124					0.00000019	0700	1900
	W1C01	AREA	837700.3	835541.2	49.1	91.2	15	0	89.7	0.00001723				0.00000270	0.00000815					0.00000127	0.00000124					0.00000019	0700	1900
	W1C02	AREA	837791.6	835504.5	117.6	34.9	25	0	0.3	0.00001723				0.00000270	0.00000815					0.00000127	0.00000124					0.00000019	0700	1900
	W1C03	AREA	837791.6	835454.9	115.7	49.6	15	0	0.4	0.00001723				0.00000270	0.00000815					0.00000127	0.00000124					0.00000019	0700	1900
	W1D01	AREA	838038.7	835680.5	127.1	21.5	21	0	22.1	0.00001723				0.00000270	0.00000815					0.00000127	0.00000124					0.00000019	0700	1900
	W1D02	AREA	838153.6	835627.1	129	27.6	20	0	23.3	0.00001723				0.00000270	0.00000815					0.00000127	0.00000124					0.00000019	0700	1900
	W1D03	AREA	838260.5	835575.3	97.9	34.5	17	0	40.8	0.00001723				0.00000270	0.00000815					0.00000127	0.00000124					0.00000019	0700	1900
	W1D04	AREA	838327.1	835517.4	66.7	36.1	14	0	56.2	0.00001723				0.00000270	0.00000815					0.00000127	0.00000124					0.00000019	0700	1900
	W1E01	AREA	838287	834828.7	67	173.7	10	0	48.7	0.00001723				0.00000270	0.00000815					0.00000127	0.00000124					0.00000019	0700	1900
	W1E02	AREA	838413.4	834923.1	48.5	106.4	10	0	10.3	0.00001723				0.00000270	0.00000815					0.00000127	0.00000124					0.00000019	0700	1900
	W1E03	AREA	838432.8	835246.5	227.6	37.6	8	0	89	0.00001723				0.00000270	0.00000815					0.00000127	0.00000124					0.00000019	0700	1900
	W1G01	AREA	837904.5	835681.7	75.5	46.2	20	0	6.1	0.00001723				0.00000270	0.00000815					0.00000127	0.00000124					0.00000019	0700	1900
	W1G02	AREA	837973.3	835687	74.9	41.3	19	0	24	0.00001723				0.00000270	0.00000815					0.00000127	0.00000124					0.00000019	0700	1900
	W1G03	AREA	837908.7	835681.2	46.7	131.1	25	0	89	0.00001723				0.00000270	0.00000815					0.00000127	0.00000124					0.00000019	0700	1900
	W1G04	AREA	838040.1	835670.7	33.1	82.7	20	0	89.5	0.00001723				0.00000270	0.00000815					0.00000127	0.00000124					0.00000019	0700	1900
	W1H01	AREA	837909.7	835633.8	101.2	131.7	30	0	88.1	0.00001723				0.00000270	0.00000815					0.00000127	0.00000124					0.00000019	0700	1900
W1H02	AREA	838041.4	835637.5	103.9	81.9	25	0	88.8	0.00001723				0.00000270	0.00000815					0.00000127	0.00000124					0.00000019	0700	1900	
W1I01	AREA	837908.7	835493.4	186.2	43.6	25	0	0.4	0.00001723				0.00000270	0.00000815					0.00000127	0.00000124					0.00000019	0700	1900	
W1I02	AREA	837908	835493.9	43.1	61.8	15	0	89.6	0.00001723				0.00000270	0.00000815					0.00000127	0.00000124					0.00000019	0700	1900	
W1I03	AREA	837969.2	835495.4	96.4	105.8	25	0	89.5	0.00001723				0.00000270	0.00000815					0.00000127	0.00000124					0.00000019	0700	1900	
W1I04	AREA	837912.3	835421.8	57.3	29	10	0	0.2	0.00001723				0.00000270	0.00000815					0.00000127	0.00000124					0.00000019	0700	1900	
Area 2	W2A01	AREA	837970.4	835399	114.4	115.4	23	0	90.2	0.00001723				0.00000270	0.00000815					0.00000127	0.00000124					0.00000019	0700	1900
	W2A02	AREA	838075	835496.4	96.4	102.3	35	0	90.4	0.00001723				0.00000270	0.00000815					0.00000127	0.00000124					0.00000019	0700	1900
	W2A03	AREA	838153.8	835235.7	37.7	90.6	35	0	89.1	0.00001723				0.00000270	0.00000815					0.00000127	0.00000124					0.00000019	0700	1900
	W2A04	AREA	838201	835199.3	51.1	43.4	35	0	89.9	0.00001723				0.00000270	0.00000815					0.00000127	0.00000124					0.00000019	0700	1900
	W2A05	AREA	838084.7	835400.2	123.7	157.3	40	0	88.9	0.00001723				0.00000270	0.00000815					0.00000127	0.00000124					0.00000019	0700	1900
	W2A06	AREA	838104.7	835276.8	42.5	138.9	40	0	88.9	0.00001723				0.00000270	0.00000815					0.00000127	0.00000124					0.00000019	0700	1900
	W2D01	AREA	838365.2	835465.2	68.8	26	11	0	64.2	0.00001723				0.00000270	0.00000815					0.00000127	0.00000124					0.00000019	0700	1900
	W2D02	AREA	838397.5	835404.9	79.5	23.9	8	0	64.6	0.00001723				0.00000270	0.00000815					0.00000127	0.00000124					0.00000019	0700	1900
	W2D03	AREA	838430.8	835333.2	52.2	25.1	8	0	70	0.00001723				0.00000270	0.00000815					0.00000127	0.00000124					0.00000019	0700	1900
	W2D04	AREA	838452.1	835288.4	191.3	20	8	0	89	0.00001723				0.00000270	0.00000815					0.00000127	0.00000124					0.00000019	0700	1900

Location and Details of Worksites (Dust Sources associated with the Project)

Mitigated Scenario (Year 2022)

Area	Source ID	Source Type	Coordinates of		Dimension (m)		Z (mPD)	Release Height (m)	Angle	TSP Emission Rate (g/s/sq.m)				RSP Emission Rate (g/s/sq.m)				FSP Emission Rate (g/s/sq.m)				Working Hour				
			X1	Y1	X2	Y2				Heavy Construction		Wind Erosion		Heavy Construction		Wind Erosion		Heavy Construction		Wind Erosion		Start Hour	End Hour			
			(m)	(m)	(m)	(m)				Working Hours	Non-working Hours	Working Hours	Non-working Hours	Working Hours	Non-working Hours	Working Hours	Non-working Hours	Working Hours	Non-working Hours	Working Hours	Non-working Hours					
Area 2	W2A01	AREA	837970.4	835399	114.4	115.4	23	0	90.2	0.00001723				0.00000270	0.00000815				0.00000127	0.00000124				0.00000019	0700	1900
	W2A02	AREA	838075	835496.4	96.4	102.3	35	0	90.4	0.00001723				0.00000270	0.00000815				0.00000127	0.00000124				0.00000019	0700	1900
	W2A03	AREA	838153.8	835235.7	37.7	90.6	35	0	89.1	0.00001723				0.00000270	0.00000815				0.00000127	0.00000124				0.00000019	0700	1900
	W2A04	AREA	838201	835199.3	51.1	43.4	35	0	89.9	0.00001723				0.00000270	0.00000815				0.00000127	0.00000124				0.00000019	0700	1900
	W2A05	AREA	838084.7	835400.2	123.7	157.3	40	0	88.9	0.00001723				0.00000270	0.00000815				0.00000127	0.00000124				0.00000019	0700	1900
	W2A06	AREA	838104.7	835276.8	42.5	138.9	40	0	88.9	0.00001723				0.00000270	0.00000815				0.00000127	0.00000124				0.00000019	0700	1900
	W2B01	AREA	838083.3	835491.8	138.2	153.1	35	0	21.5	0.00001723				0.00000270	0.00000815				0.00000127	0.00000124				0.00000019	0700	1900
	W2B02	AREA	838156.9	835464.6	62.3	230.6	30	0	89.2	0.00001723				0.00000270	0.00000815				0.00000127	0.00000124				0.00000019	0700	1900
	W2B03	AREA	838208.3	835402.3	69.4	206.9	30	0	89.1	0.00001723				0.00000270	0.00000815				0.00000127	0.00000124				0.00000019	0700	1900
	W2B04	AREA	838198.1	835495.4	72.3	103.2	25	0	41.5	0.00001723				0.00000270	0.00000815				0.00000127	0.00000124				0.00000019	0700	1900
	W2B05	AREA	838265	835484.8	66.9	66.5	20	0	52.1	0.00001723				0.00000270	0.00000815				0.00000127	0.00000124				0.00000019	0700	1900
	W2C01	AREA	838244.4	835242.8	203.5	93.3	30	0	0	0.00001723				0.00000270	0.00000815				0.00000127	0.00000124				0.00000019	0700	1900
	W2C02	AREA	838244.4	835242.8	97.6	209.4	30	0	90	0.00001723				0.00000270	0.00000815				0.00000127	0.00000124				0.00000019	0700	1900
	W2C03	AREA	838271.9	835145.3	37.6	182.7	25	0	90	0.00001723				0.00000270	0.00000815				0.00000127	0.00000124				0.00000019	0700	1900
	W2C04	AREA	838317.6	835107.7	44	137.8	25	0	90	0.00001723				0.00000270	0.00000815				0.00000127	0.00000124				0.00000019	0700	1900
	W2C05	AREA	838370.3	835063.7	33.8	85.7	20	0	90	0.00001723				0.00000270	0.00000815				0.00000127	0.00000124				0.00000019	0700	1900
	W2C06	AREA	838419.7	835029.9	34.3	36.9	14	0	90	0.00001723				0.00000270	0.00000815				0.00000127	0.00000124				0.00000019	0700	1900
	W2D01	AREA	838365.2	835465.2	68.8	26	11	0	64.2	0.00001723				0.00000270	0.00000815				0.00000127	0.00000124				0.00000019	0700	1900
	W2D02	AREA	838397.5	835404.9	79.5	23.9	8	0	64.6	0.00001723				0.00000270	0.00000815				0.00000127	0.00000124				0.00000019	0700	1900
	W2D03	AREA	838430.8	835333.2	52.2	25.1	8	0	70	0.00001723				0.00000270	0.00000815				0.00000127	0.00000124				0.00000019	0700	1900
W2D04	AREA	838452.1	835288.4	191.3	20	8	0	89	0.00001723				0.00000270	0.00000815				0.00000127	0.00000124				0.00000019	0700	1900	
Area 3	W3A01	AREA	837952.5	835234.9	153	50.2	20	0	0	0.00001723				0.00000270	0.00000815				0.00000127	0.00000124				0.00000019	0700	1900
	W3A02	AREA	837966.6	835107.7	186.5	126.1	20	0	0.5	0.00001723				0.00000270	0.00000815				0.00000127	0.00000124				0.00000019	0700	1900
	W3A04	AREA	838152.5	835109.4	68.6	89.1	35	0	0.5	0.00001723				0.00000270	0.00000815				0.00000127	0.00000124				0.00000019	0700	1900
	W3D01	AREA	838454.8	834992.2	19.7	104.3	8	0	0	0.00001723				0.00000270	0.00000815				0.00000127	0.00000124				0.00000019	0700	1900
	W3D02	AREA	838450.9	834956.5	19.5	38.1	8	0	6.3	0.00001723				0.00000270	0.00000815				0.00000127	0.00000124				0.00000019	0700	1900
	W3D03	AREA	838429	834919.7	24.6	47.8	8	0	24.3	0.00001723				0.00000270	0.00000815				0.00000127	0.00000124				0.00000019	0700	1900
	W3F01	AREA	837968.8	835107.9	111.7	253.9	20	0	89.6	0.00001723				0.00000270	0.00000815				0.00000127	0.00000124				0.00000019	0700	1900

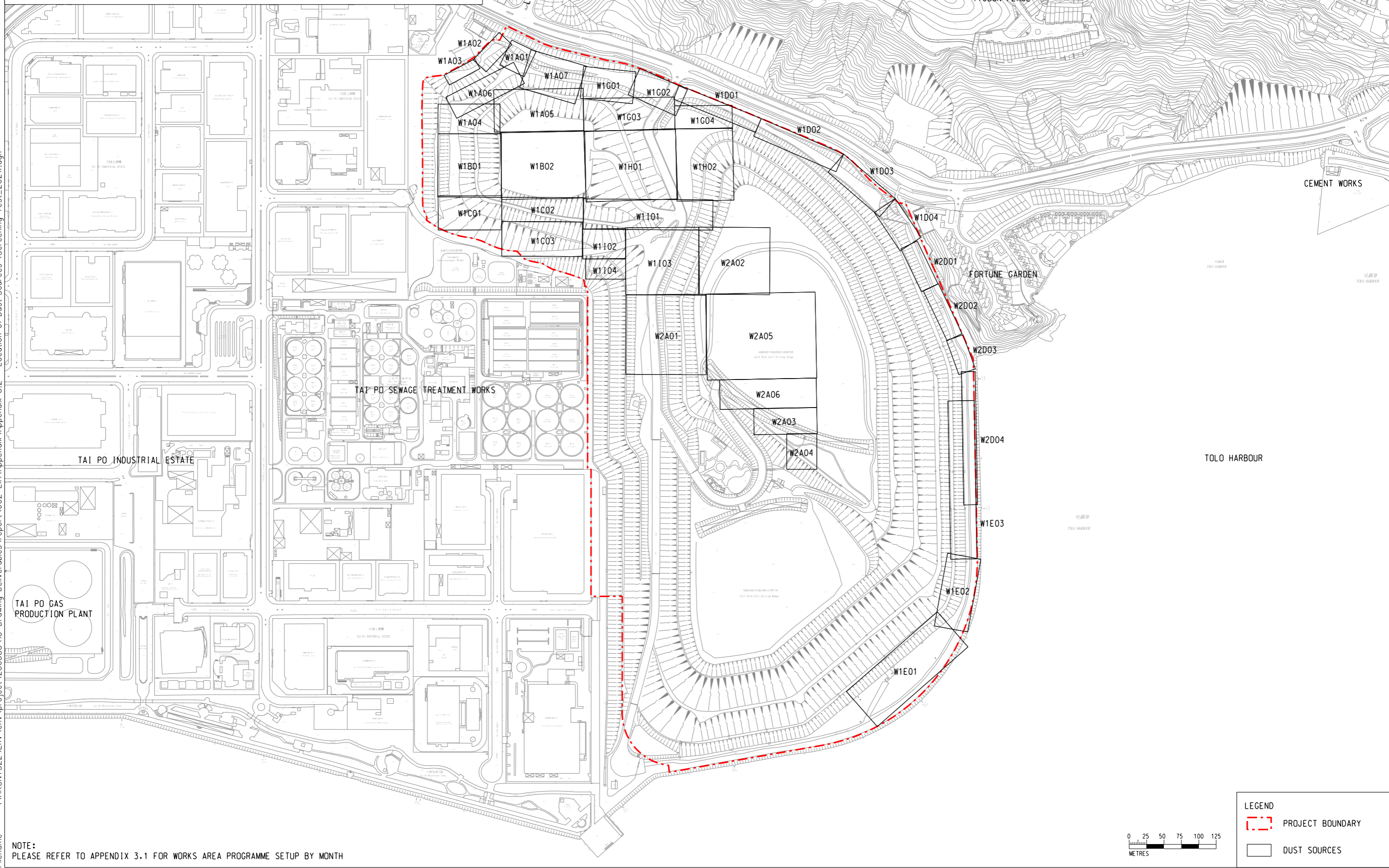
Location and Details of Worksites (Dust Sources associated with the Project)

Mitigated Scenario (Year 2023)

Area	Source ID	Source Type	Coordinates of		Dimension (m)		Z (mPD)	Release Height (m)	Angle	TSP Emission Rate (g/s/sq.m)				RSP Emission Rate (g/s/sq.m)				FSP Emission Rate (g/s/sq.m)				Working Hour		
			X1	Y1	X2	Y2				Heavy Construction		Wind Erosion		Heavy Construction		Wind Erosion		Heavy Construction		Wind Erosion		Start Hour	End Hour	
			(m)	(m)	(m)	(m)				Working Hours	Non-working Hours	Working Hours	Non-working Hours	Working Hours	Non-working Hours	Working Hours	Non-working Hours	Working Hours	Non-working Hours	Working Hours	Non-working Hours			
Area 3	W3B01	AREA	838007.6	834997.4	31.4	214.1	25	0	90.1	0.00001723				0.00000270	0.00000815			0.00000127	0.00000124			0.00000019	0700	1900
	W3B02	AREA	837964.4	834716.8	257.3	248.8	20	0	0	0.00001723				0.00000270	0.00000815			0.00000127	0.00000124			0.00000019	0700	1900
	W3C01	AREA	838221.8	835148.9	151.6	52.6	30	0	89.9	0.00001723				0.00000270	0.00000815			0.00000127	0.00000124			0.00000019	0700	1900
	W3C02	AREA	838274.9	834997.4	42.4	110.2	30	0	0.2	0.00001723				0.00000270	0.00000815			0.00000127	0.00000124			0.00000019	0700	1900
	W3C03	AREA	838317.6	835063.7	205	52.8	25	0	90	0.00001723				0.00000270	0.00000815			0.00000127	0.00000124			0.00000019	0700	1900
	W3C04	AREA	838370.4	835029.9	124.3	49.3	20	0	90	0.00001723				0.00000270	0.00000815			0.00000127	0.00000124			0.00000019	0700	1900
	W3C05	AREA	838221.8	834997	242	95.8	20	0	89.9	0.00001723				0.00000270	0.00000815			0.00000127	0.00000124			0.00000019	0700	1900
	W3C06	AREA	838419.7	834995.6	59.6	34.9	10	0	89.3	0.00001723				0.00000270	0.00000815			0.00000127	0.00000124			0.00000019	0700	1900
	W3D01	AREA	838454.8	834992.2	19.7	104.3	8	0	0	0.00001723				0.00000270	0.00000815			0.00000127	0.00000124			0.00000019	0700	1900
	W3D02	AREA	838450.9	834956.5	19.5	38.1	8	0	6.3	0.00001723				0.00000270	0.00000815			0.00000127	0.00000124			0.00000019	0700	1900
	W3D03	AREA	838429	834919.7	24.6	47.8	8	0	24.3	0.00001723				0.00000270	0.00000815			0.00000127	0.00000124			0.00000019	0700	1900
	W3F01	AREA	837968.8	835107.9	111.7	253.9	20	0	89.6	0.00001723				0.00000270	0.00000815			0.00000127	0.00000124			0.00000019	0700	1900

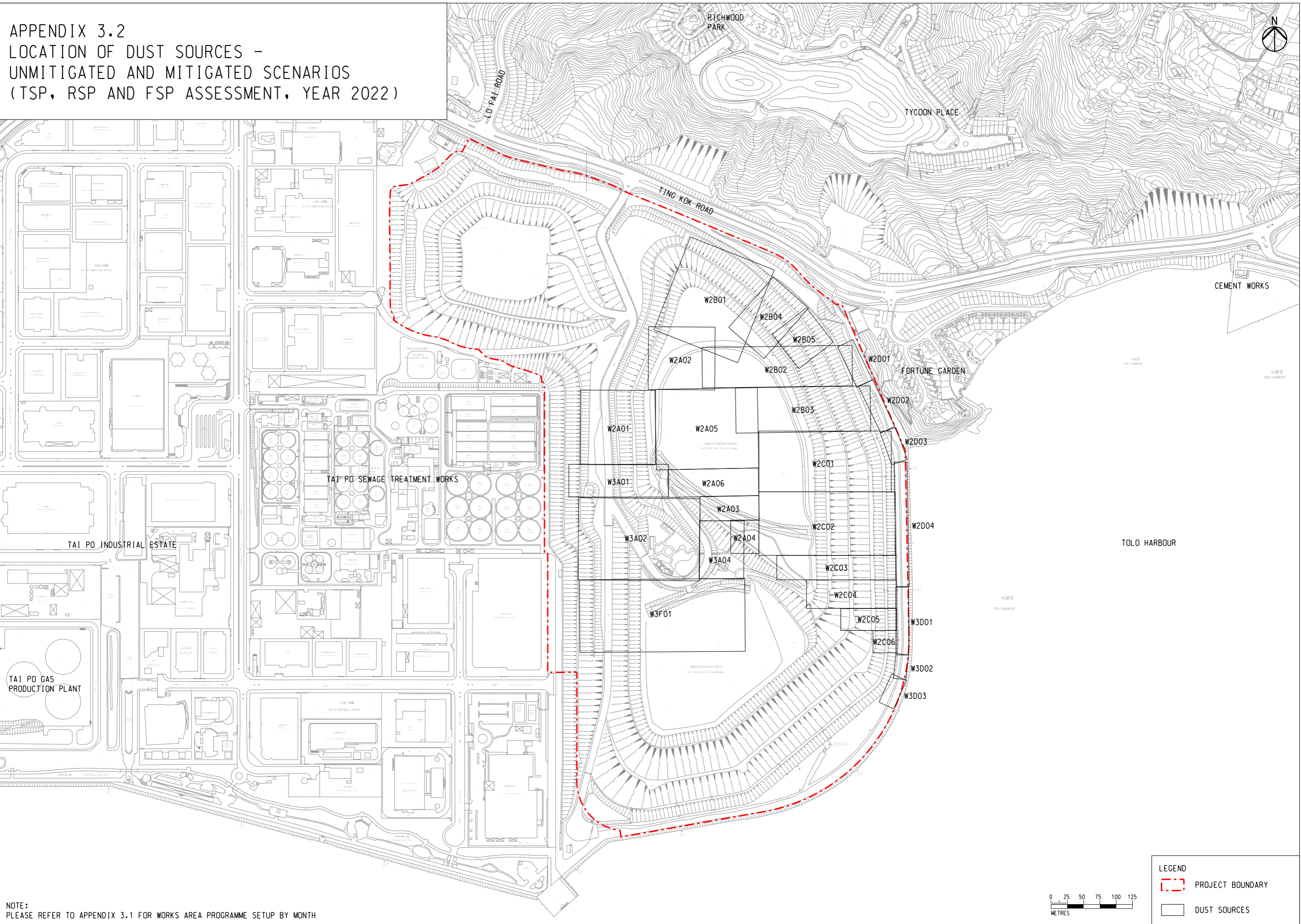
APPENDIX 3.2
 LOCATION OF DUST SOURCES -
 UNMITIGATED AND MITIGATED SCENARIOS
 (TSP, RSP AND FSP ASSESSMENT, YEAR 2021)

Printed by : 1/21/2019
 Filename : \\HKGNTS22\Env\project\256383\13 Drawing Deliverables\report\002 EIA\Appendix\Appendix 3.2 - Location of Dust Sources (Screening Test_2021).dgn



NOTE:
 PLEASE REFER TO APPENDIX 3.1 FOR WORKS AREA PROGRAMME SETUP BY MONTH

APPENDIX 3.2
 LOCATION OF DUST SOURCES –
 UNMITIGATED AND MITIGATED SCENARIOS
 (TSP, RSP AND FSP ASSESSMENT, YEAR 2022)



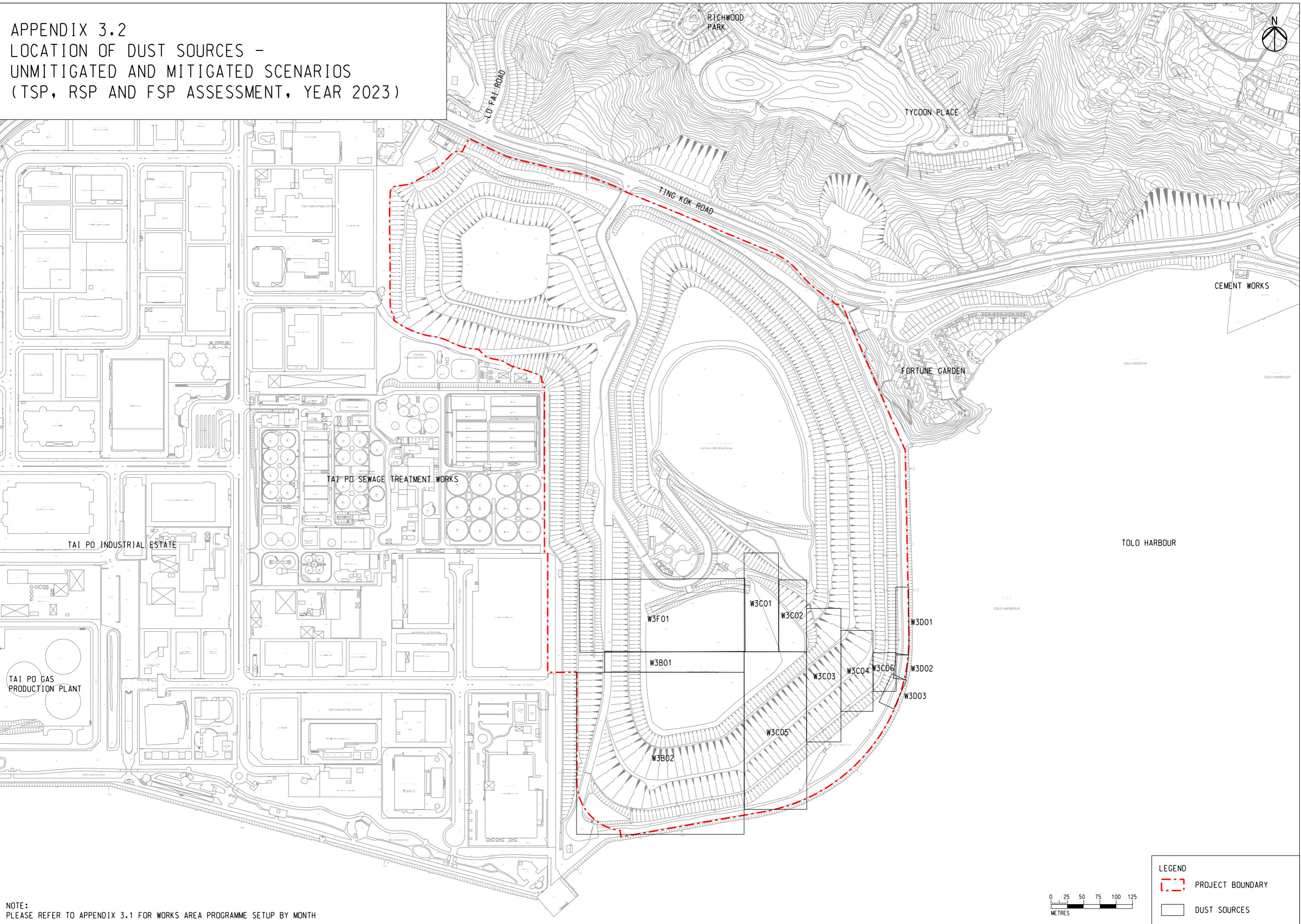
Printed by : 1/21/2019
 Filename : \\HKGNTS22\Env\project\256383\13 Drawing Deliverables\report\002 EIA\Appendix\Appendix 3.2 - Location of Dust Sources (Screening Test_2022).dgn

NOTE:
 PLEASE REFER TO APPENDIX 3.1 FOR WORKS AREA PROGRAMME SETUP BY MONTH

LEGEND

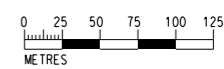
- PROJECT BOUNDARY
- DUST SOURCES

APPENDIX 3.2
 LOCATION OF DUST SOURCES -
 UNMITIGATED AND MITIGATED SCENARIOS
 (TSP, RSP AND FSP ASSESSMENT, YEAR 2023)



Printed by : 1/21/2019
 Filename : \\HKGNTS22\Env\project\256383\13 Drawing Deliverables\report\002 EIA\Appendix\Appendix 3.2 - Location of Dust Sources (Screening Test_2023).dgn

NOTE:
 PLEASE REFER TO APPENDIX 3.1 FOR WORKS AREA PROGRAMME SETUP BY MONTH



LEGEND

- PROJECT BOUNDARY
- DUST SOURCES