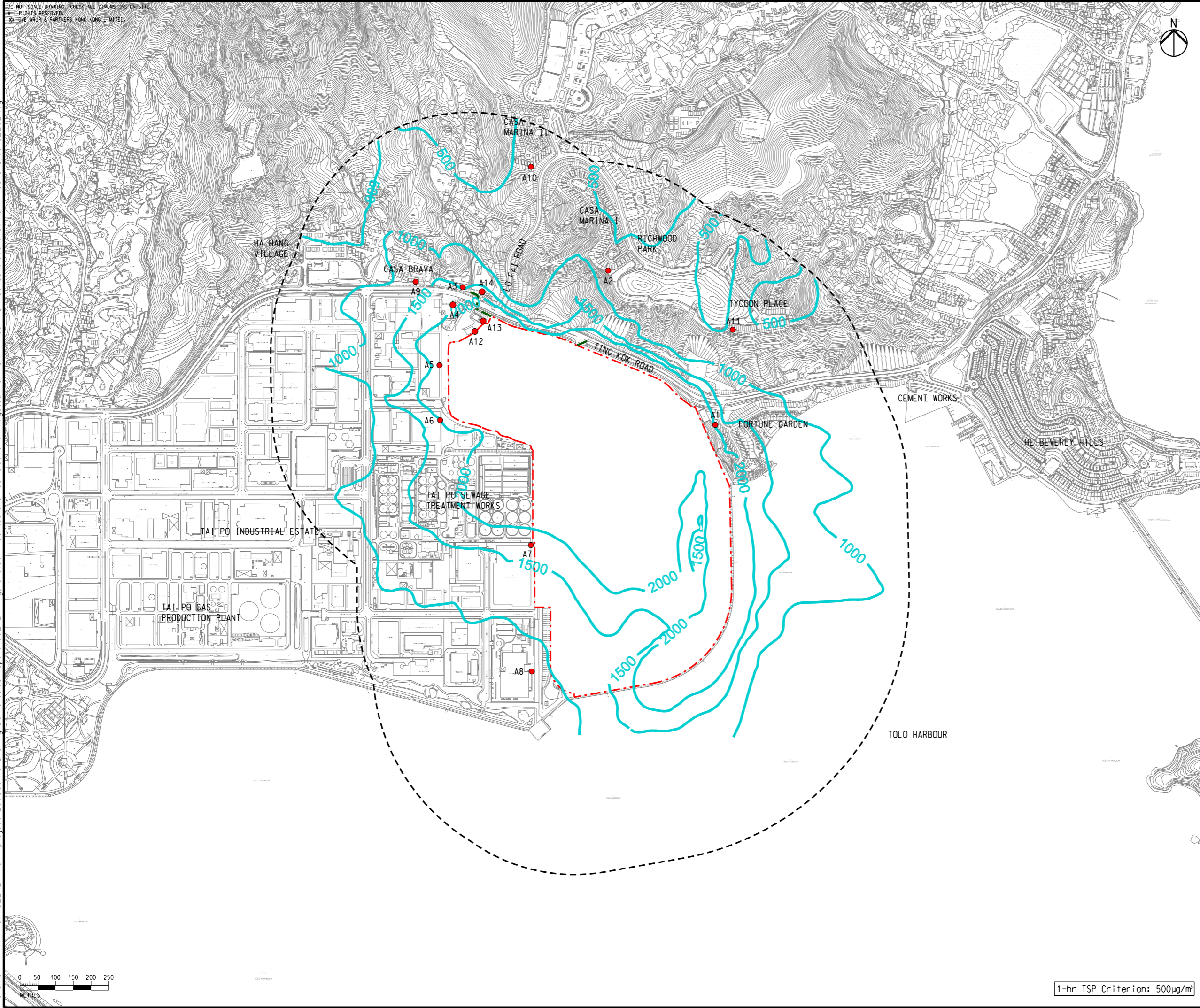


DO NOT SCALE DRAWING. CHECK ALL DIMENSIONS ON-SITE.
 ALL RIGHTS RESERVED.
 © EYE ARUP & PARTNERS HONG KONG LIMITED.

Printed by : 3/6/2019
 Filename : \\HKGNTS22\Env\project\256383\13 Drawing Deliverables\report\002 EIA\Figure 3.3a - Contours of Cumulative Unmitigated Maximum 1-hour TSP concentrations at 1.5m Above Ground_2021.dgn



- LEGEND**
- PROJECT BOUNDARY
 - PROPOSED DRAINAGE / SEWERAGE / WATERWORKS OUTSIDE SITE BOUNDARY
 - 500m ASSESSMENT AREA
 - REPRESENTATIVE EXISTING AIR SENSITIVE RECEIVER
 - 500— TSP CONTOUR, $\mu\text{g}/\text{m}^3$

| | | | |
|-----|--------------|----|-------|
| D | FOURTH ISSUE | GL | 01/19 |
| C | THIRD ISSUE | GL | 11/18 |
| B | SECOND ISSUE | GL | 07/18 |
| A | FIRST ISSUE | GL | 04/18 |
| Rev | Description | By | Date |

Consultant
ARUP

Contract No. and Title
SHUEN WAN GOLF COURSE

Drawing title
CONTOURS OF CUMULATIVE UNMITIGATED MAXIMUM 1-HOUR TSP CONCENTRATIONS AT 1.5m ABOVE GROUND (YEAR 2021)

Drawing no. **FIGURE 3.3a** Rev. **D**

| | | | |
|----------------------|---------------|-----------------------|----------------|
| Drawn GL | Date 01/19 | Checked EL | Approved FC |
| Scale 1:10000 @A3 | | Status PRELIMINARY | |

COPYRIGHT RESERVED

SHA LO TUNG DEVELOPMENT COMPANY LIMITED

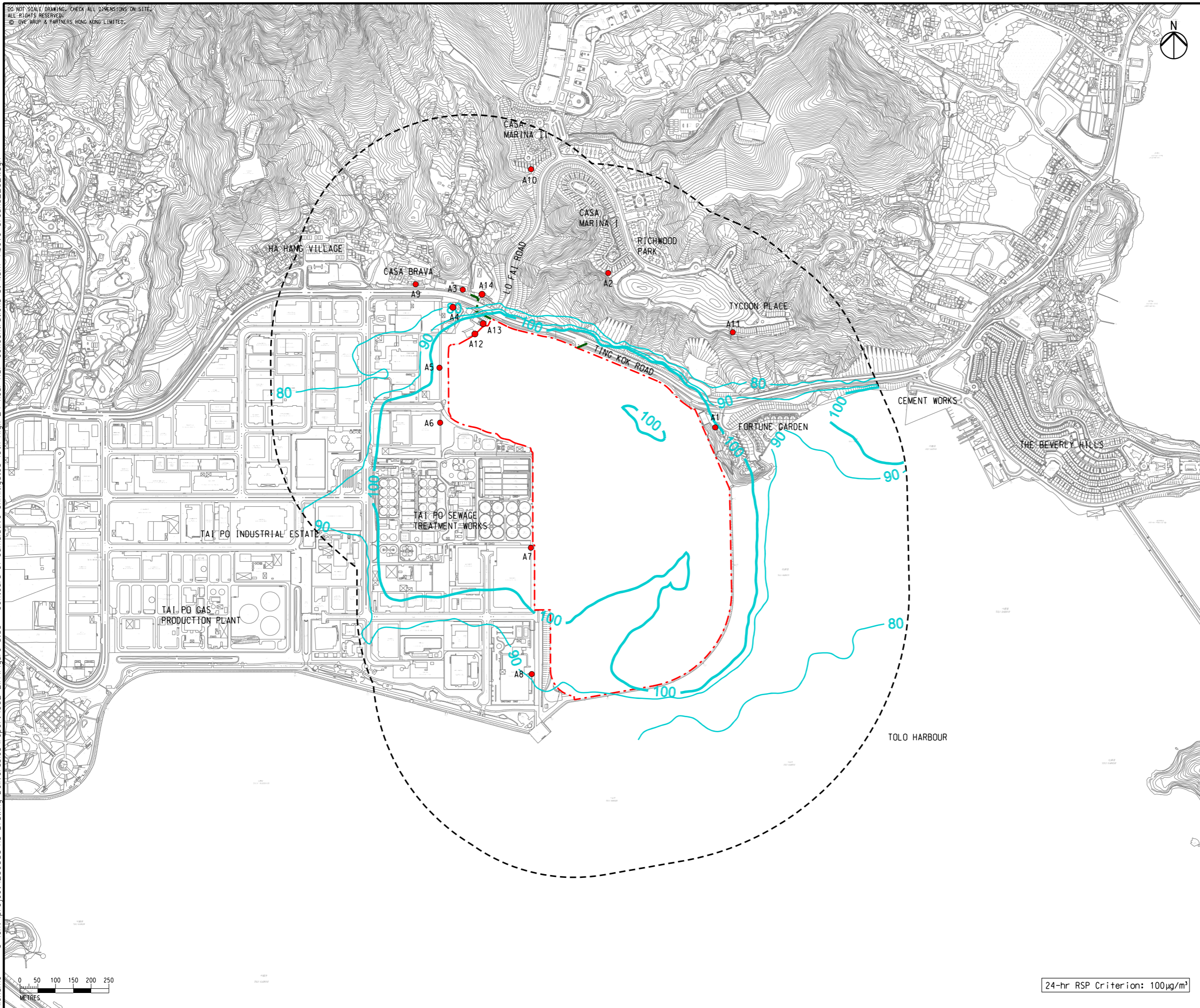
1-hr TSP Criterion: 500 $\mu\text{g}/\text{m}^3$

DO NOT SCALE DRAWING. CHECK ALL DIMENSIONS ON-SITE.
 ALL RIGHTS RESERVED.
 © EYE ARUP & PARTNERS HONG KONG LIMITED.



- LEGEND**
- PROJECT BOUNDARY
 - PROPOSED DRAINAGE / SEWERAGE / WATERWORKS OUTSIDE SITE BOUNDARY
 - 500m ASSESSMENT AREA
 - REPRESENTATIVE EXISTING AIR SENSITIVE RECEIVER
 - 100— RSP CONTOUR, $\mu\text{g}/\text{m}^3$

Printed by : 1/7/2019
 Filename : G:\env\project\256383\13 Drawing Deliverables\report\002 EIA\Figure 3.3b - Contours of Cumulative Unmitigated 10th High 24-hour RSP concentrations at 1.5m Above Ground_2021.dgn



24-hr RSP Criterion: $100\mu\text{g}/\text{m}^3$

| | | | |
|-----|--------------|----|-------|
| D | FOURTH ISSUE | GL | 01/19 |
| C | THIRD ISSUE | GL | 11/18 |
| B | SECOND ISSUE | GL | 07/18 |
| A | FIRST ISSUE | GL | 04/18 |
| Rev | Description | By | Date |

Consultant
ARUP

Contract No. and Title
SHUEN WAN GOLF COURSE

Drawing title
CONTOURS OF CUMULATIVE UNMITIGATED 10th HIGH 24-HOUR RSP CONCENTRATIONS AT 1.5m ABOVE GROUND (YEAR 2021)

| | | | |
|-------------|--------------------|----------|-------------|
| Drawing no. | FIGURE 3.3b | Rev. | D |
| Drawn | GL | Date | 01/19 |
| Checked | EL | Approved | FC |
| Scale | 1:10000 @A3 | Status | PRELIMINARY |

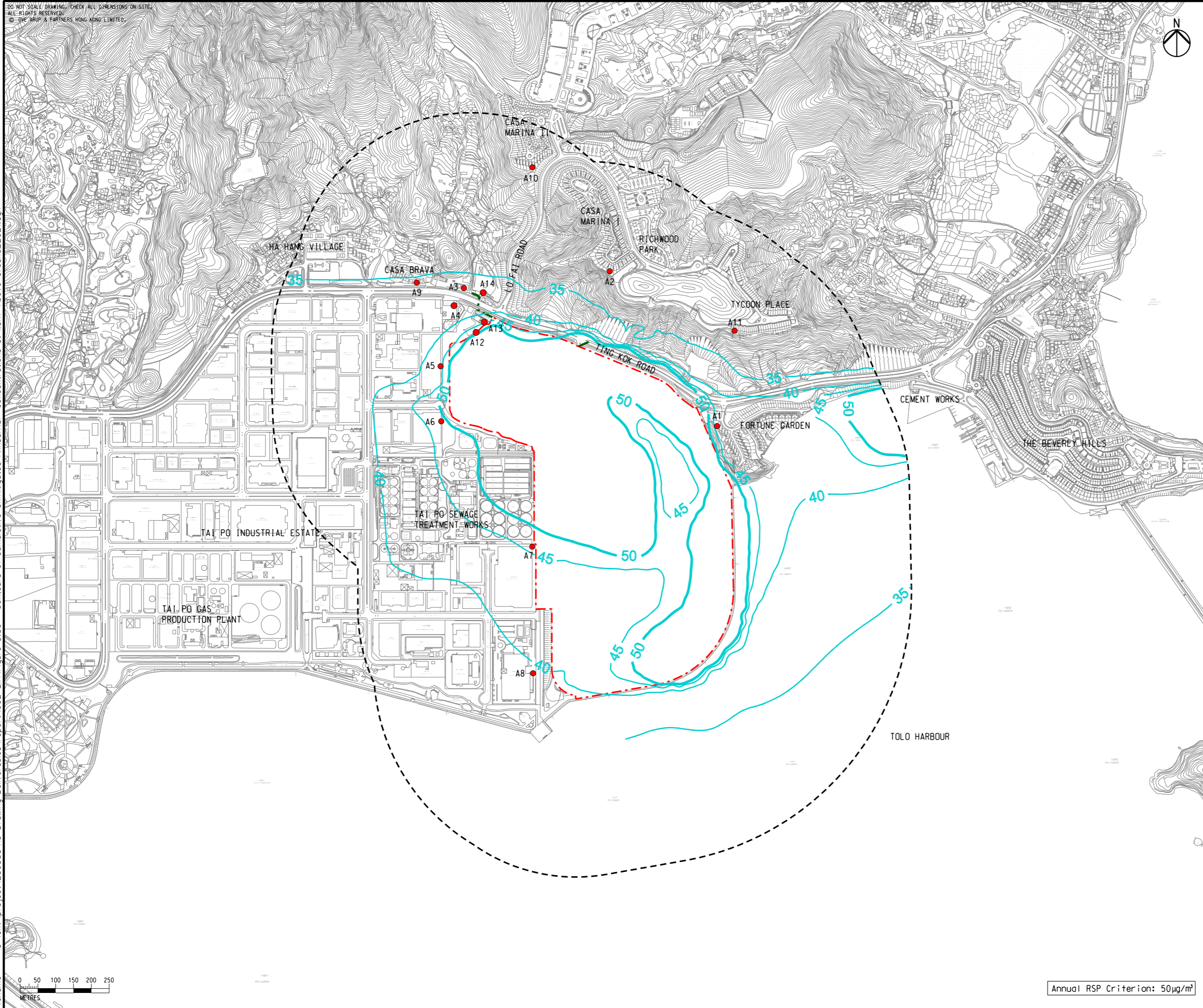
COPYRIGHT RESERVED
SHA LO TUNG DEVELOPMENT COMPANY LIMITED

DO NOT SCALE DRAWING. CHECK ALL DIMENSIONS ON-SITE.
 ALL RIGHTS RESERVED.
 © DVE ARUP & PARTNERS HONG KONG LIMITED.



- LEGEND**
- PROJECT BOUNDARY
 - 500m ASSESSMENT AREA
 - REPRESENTATIVE EXISTING AIR SENSITIVE RECEIVER
 - 50 — RSP CONTOUR, $\mu\text{g}/\text{m}^3$

Printed by : 1/7/2019
 Filename : G:\env\project\256383\13 Drawing Deliverables\report\002 EIA\Figure 3.3c - Contours of Cumulative Unmitigated Annual RSP concentrations at 1.5m Above Ground_2021.dgn



Annual RSP Criterion: $50\mu\text{g}/\text{m}^3$

| | | | |
|-----|--------------|----|-------|
| D | FOURTH ISSUE | GL | 01/19 |
| C | THIRD ISSUE | GL | 11/18 |
| B | SECOND ISSUE | GL | 07/18 |
| A | FIRST ISSUE | GL | 04/18 |
| Rev | Description | By | Date |

Consultant
ARUP

Contract No. and Title
SHUEN WAN GOLF COURSE

Drawing title
CONTOURS OF CUMULATIVE UNMITIGATED ANNUAL RSP CONCENTRATIONS AT 1.5m ABOVE GROUND (YEAR 2021)

| | | | |
|-------------|--------------------|----------|-------------|
| Drawing no. | FIGURE 3.3c | Rev. | D |
| Drawn | GL | Date | 01/19 |
| Checked | EL | Approved | FC |
| Scale | 1:10000 @A3 | Status | PRELIMINARY |

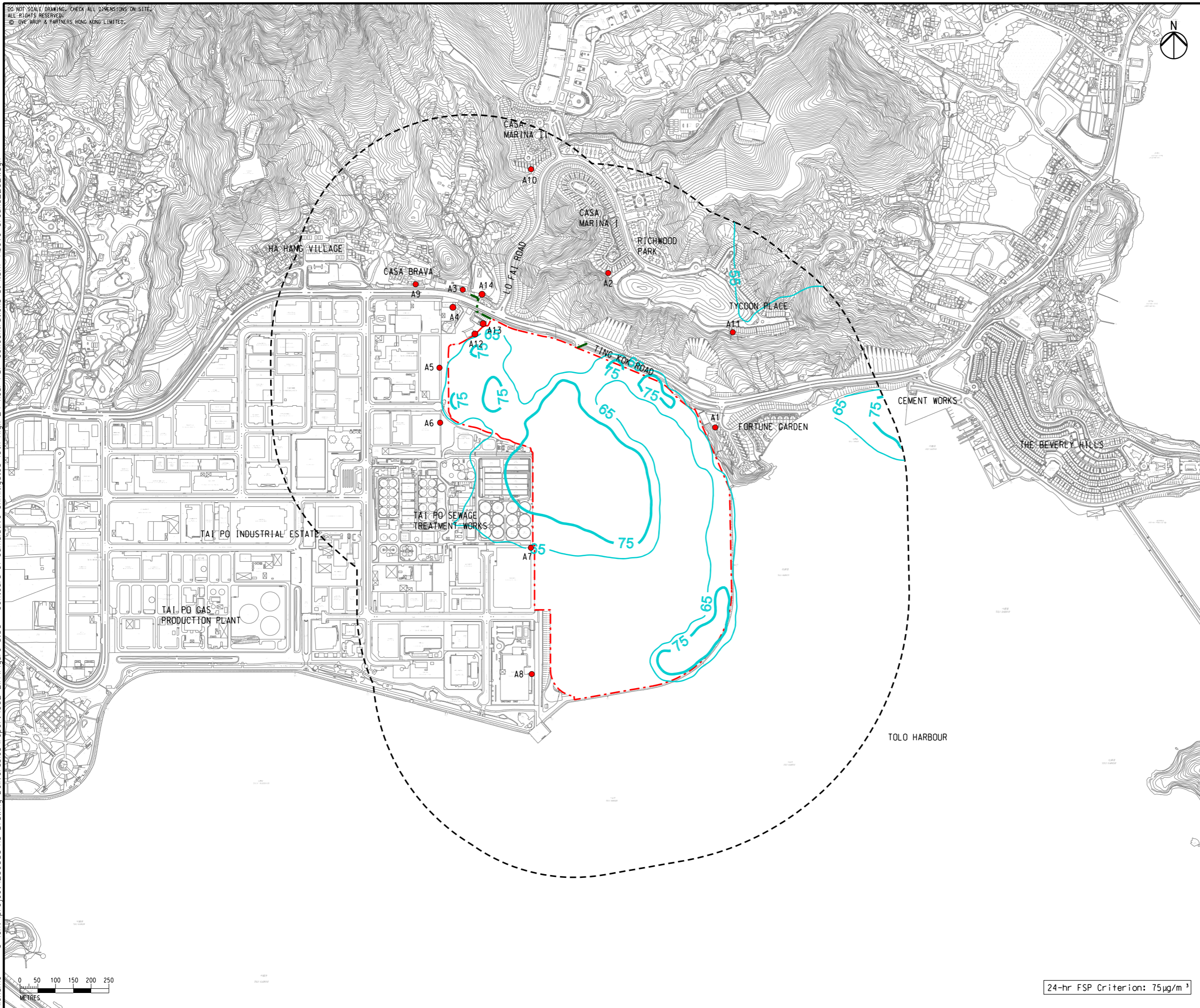
COPYRIGHT RESERVED
SHA LO TUNG DEVELOPMENT COMPANY LIMITED

DO NOT SCALE DRAWING. CHECK ALL DIMENSIONS ON-SITE.
 ALL RIGHTS RESERVED.
 © EYE ARUP & PARTNERS HONG KONG LIMITED.



- LEGEND**
- PROJECT BOUNDARY
 - PROPOSED DRAINAGE / SEWERAGE / WATERWORKS OUTSIDE SITE BOUNDARY
 - 500m ASSESSMENT AREA
 - REPRESENTATIVE EXISTING AIR SENSITIVE RECEIVER
 - 75 — FSP CONTOUR, $\mu\text{g}/\text{m}^3$

Printed by : 1/7/2019
 Filename : G:\env\project\256383\13 Drawing Deliverables\report\002 EIA\Figure 3.3d - Contours of Cumulative Unmitigated 10th High 24-hour FSP concentrations at 1.5m Above Ground_2021.dgn



| | | | |
|-----|--------------|----|-------|
| D | FOURTH ISSUE | GL | 01/19 |
| C | THIRD ISSUE | GL | 11/18 |
| B | SECOND ISSUE | GL | 07/18 |
| A | FIRST ISSUE | GL | 04/18 |
| Rev | Description | By | Date |

Consultant
ARUP

Contract No. and Title
SHUEN WAN GOLF COURSE

Drawing title
CONTOURS OF CUMULATIVE UNMITIGATED 10th HIGH 24-HOUR FSP CONCENTRATIONS AT 1.5m ABOVE GROUND (YEAR 2021)

| | | | |
|-------------|--------------------|----------|-------------|
| Drawing no. | FIGURE 3.3d | Rev. | D |
| Drawn | GL | Date | 01/19 |
| Checked | EL | Approved | FC |
| Scale | 1:10000 @A3 | Status | PRELIMINARY |

COPYRIGHT RESERVED
SHA LO TUNG DEVELOPMENT COMPANY LIMITED

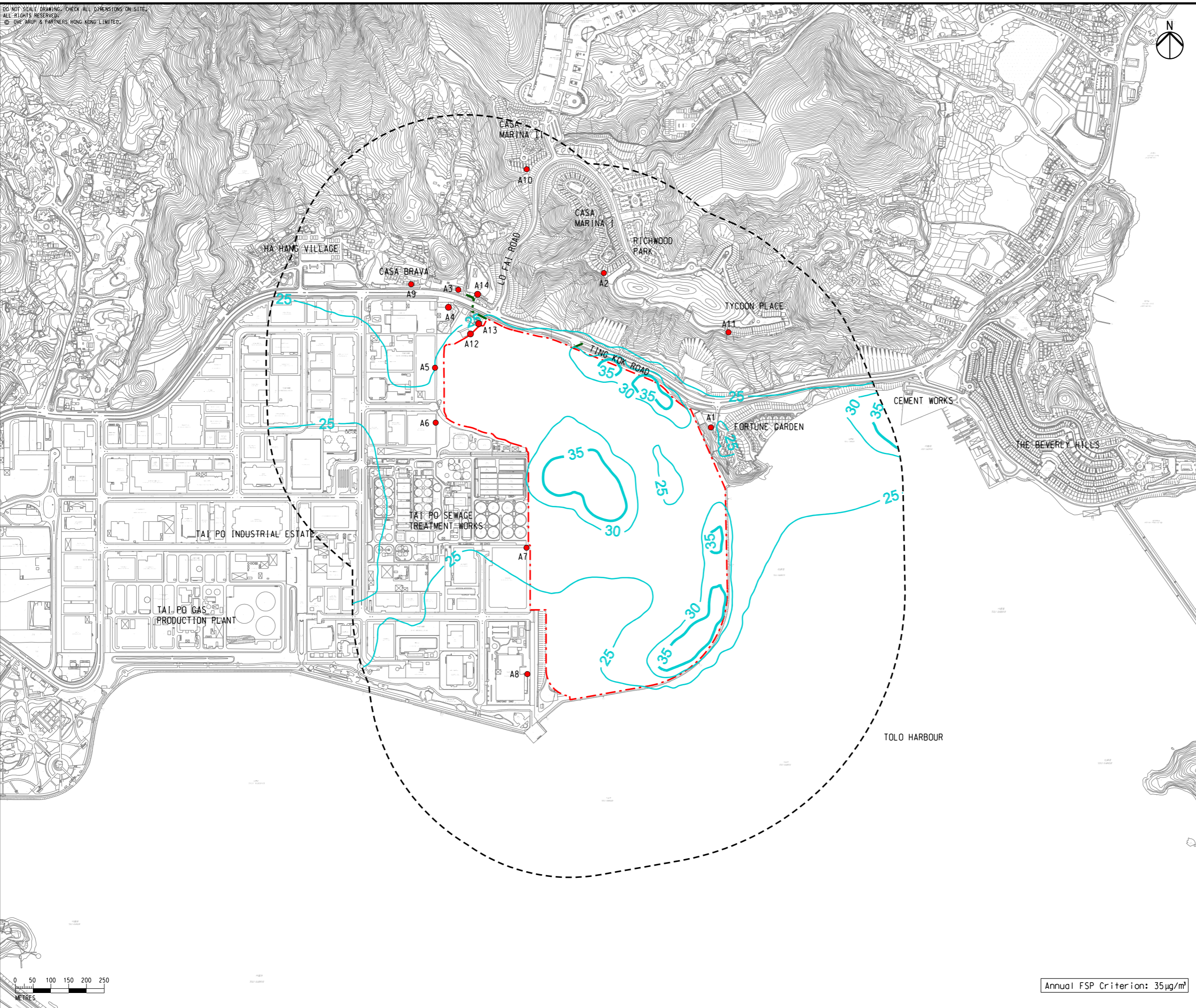
24-hr FSP Criterion: $75\mu\text{g}/\text{m}^3$

DO NOT SCALE DRAWING. CHECK ALL DIMENSIONS ON-SITE.
 ALL RIGHTS RESERVED.
 © 2019 ARUP & PARTNERS HONG KONG LIMITED.



- LEGEND**
- PROJECT BOUNDARY
 - PROPOSED DRAINAGE / SEWERAGE / WATERWORKS OUTSIDE SITE BOUNDARY
 - 500m ASSESSMENT AREA
 - REPRESENTATIVE EXISTING AIR SENSITIVE RECEIVER
 - 35 — FSP CONTOUR, $\mu\text{g}/\text{m}^3$

Printed by : 1/7/2019
 Filename : G:\env\project\256383\13 Drawing Deliverables\report\002 EIA\Figure 3.3e - Contours of Cumulative Unmitigated Annual FSP concentrations at 1.5m Above Ground_2021.dgn



Annual FSP Criterion: $35 \mu\text{g}/\text{m}^3$

| | | | |
|-----|--------------|----|-------|
| D | FOURTH ISSUE | GL | 01/19 |
| C | THIRD ISSUE | GL | 11/18 |
| B | SECOND ISSUE | GL | 07/18 |
| A | FIRST ISSUE | GL | 04/18 |
| Rev | Description | By | Date |

Consultant
ARUP

Contract No. and Title
SHUEN WAN GOLF COURSE

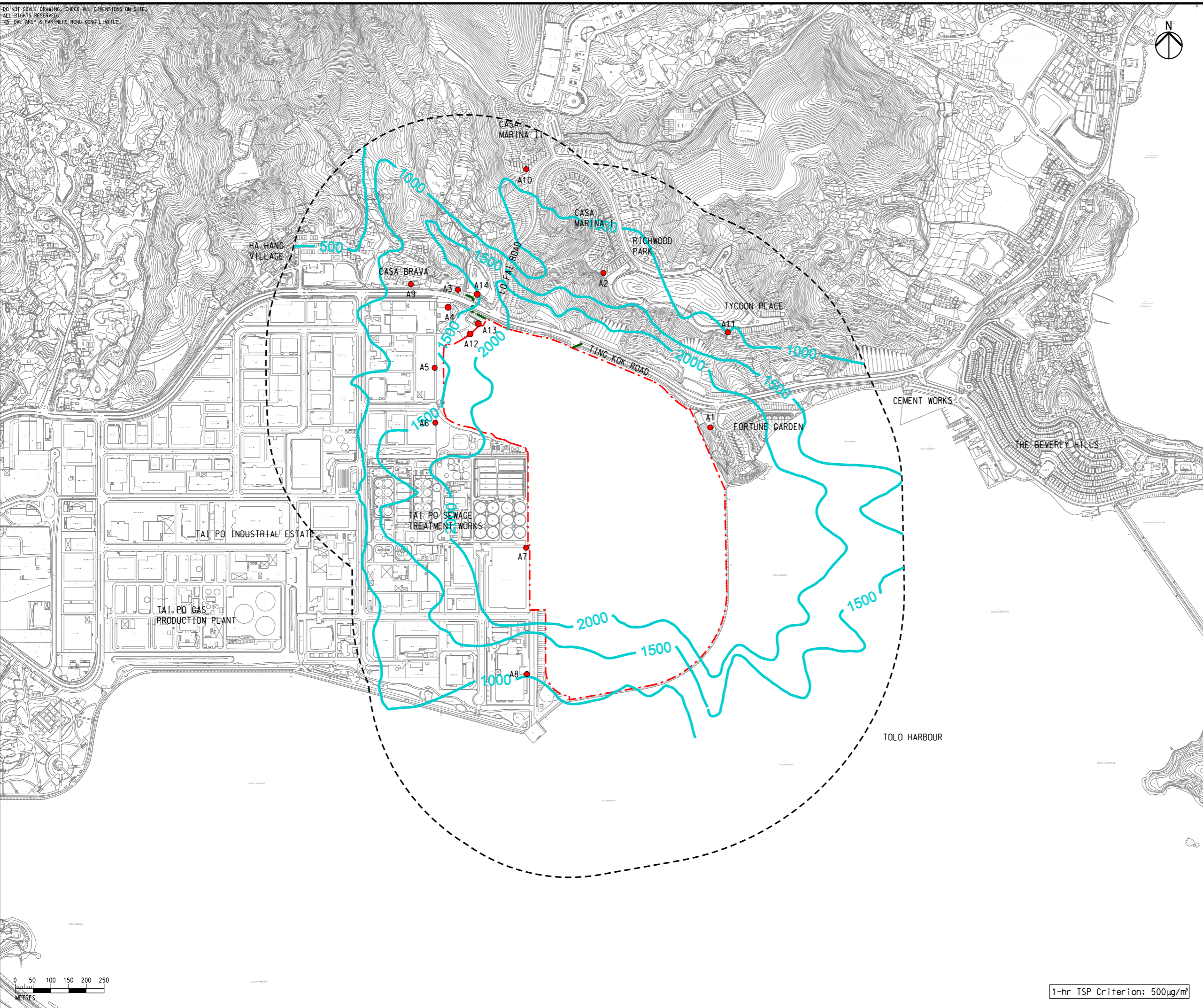
Drawing title
CONTOURS OF CUMULATIVE UNMITIGATED ANNUAL FSP CONCENTRATIONS A1.5m ABOVE GROUND (YEAR 2021)

| | | | |
|-------------|--------------------|----------|-------------|
| Drawing no. | FIGURE 3.3e | Rev. | D |
| Drawn | GL | Date | 01/19 |
| Checked | EL | Approved | FC |
| Scale | 1:10000 @A3 | Status | PRELIMINARY |

COPYRIGHT RESERVED
SHA LO TUNG DEVELOPMENT COMPANY LIMITED

Printed by : 3/6/2019
 Filename : \\HKGNTS22\Env\project\256383\13 Drawing Deliverables\report\002 EIA\Figure 3.3f - Contours of Cumulative Unmitigated Maximum 1-hour TSP concentrations at 1.5m Above Ground_2022.dgn

DO NOT SCALE DRAWING. CHECK ALL DIMENSIONS ON-SITE.
 ALL RIGHTS RESERVED.
 © EYE ARUP & PARTNERS HONG KONG LIMITED.



- LEGEND**
- PROJECT BOUNDARY
 - PROPOSED DRAINAGE / SEWERAGE / WATERWORKS OUTSIDE SITE BOUNDARY
 - 500m ASSESSMENT AREA
 - REPRESENTATIVE EXISTING AIR SENSITIVE RECEIVER
 - 500— TSP CONTOUR, $\mu\text{g}/\text{m}^3$

| | | | |
|-----|--------------|----|-------|
| D | FOURTH ISSUE | GL | 01/19 |
| C | THIRD ISSUE | GL | 11/18 |
| B | SECOND ISSUE | GL | 07/18 |
| A | FIRST ISSUE | GL | 04/18 |
| Rev | Description | By | Date |

Consultant
ARUP

Contract No. and Title
SHUEN WAN GOLF COURSE

Drawing title
CONTOURS OF CUMULATIVE UNMITIGATED MAXIMUM 1-HOUR TSP CONCENTRATIONS AT 1.5m ABOVE GROUND (YEAR 2022)

| | | | |
|--------------------------------|---------------|-----------------------|----------------|
| Drawing no. FIGURE 3.3f | | Rev. D | |
| Drawn GL | Date 01/19 | Checked EL | Approved FC |
| Scale 1:10000 @A3 | | Status PRELIMINARY | |

COPYRIGHT RESERVED
SHA LO TUNG DEVELOPMENT COMPANY LIMITED

1-hr TSP Criterion: $500\mu\text{g}/\text{m}^3$

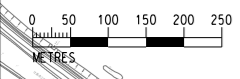
DO NOT SCALE DRAWING. CHECK ALL DIMENSIONS ON-SITE.
 ALL RIGHTS RESERVED.
 © EYE ARUP & PARTNERS HONG KONG LIMITED.



- LEGEND**
- PROJECT BOUNDARY
 - PROPOSED DRAINAGE / SEWERAGE / WATERWORKS OUTSIDE SITE BOUNDARY
 - 500m ASSESSMENT AREA
 - REPRESENTATIVE EXISTING AIR SENSITIVE RECEIVER
 - 100— RSP CONTOUR, $\mu\text{g}/\text{m}^3$



Printed by : 1/7/2019
 Filename : G:\env\project\256383\13 Drawing Deliverables\report\002 EIA\Figure 3.3g - Contours of Cumulative Unmitigated 10th High 24-hour RSP concentrations at 1.5m Above Ground_2022.dgn



24-hr RSP Criterion: $100\mu\text{g}/\text{m}^3$

| | | | |
|-----|--------------|----|-------|
| D | FOURTH ISSUE | GL | 01/19 |
| C | THIRD ISSUE | GL | 11/18 |
| B | SECOND ISSUE | GL | 07/18 |
| A | FIRST ISSUE | GL | 04/18 |
| Rev | Description | By | Date |

Consultant
ARUP

Contract No. and Title
SHUEN WAN GOLF COURSE

Drawing title
CONTOURS OF CUMULATIVE UNMITIGATED 10th HIGH 24-HOUR RSP CONCENTRATIONS AT 1.5m ABOVE GROUND (YEAR 2022)

| | | | |
|-------------|--------------------|----------|-------------|
| Drawing no. | FIGURE 3.3g | Rev. | D |
| Drawn | GL | Date | 01/19 |
| Checked | EL | Approved | FC |
| Scale | 1:10000 @A3 | Status | PRELIMINARY |

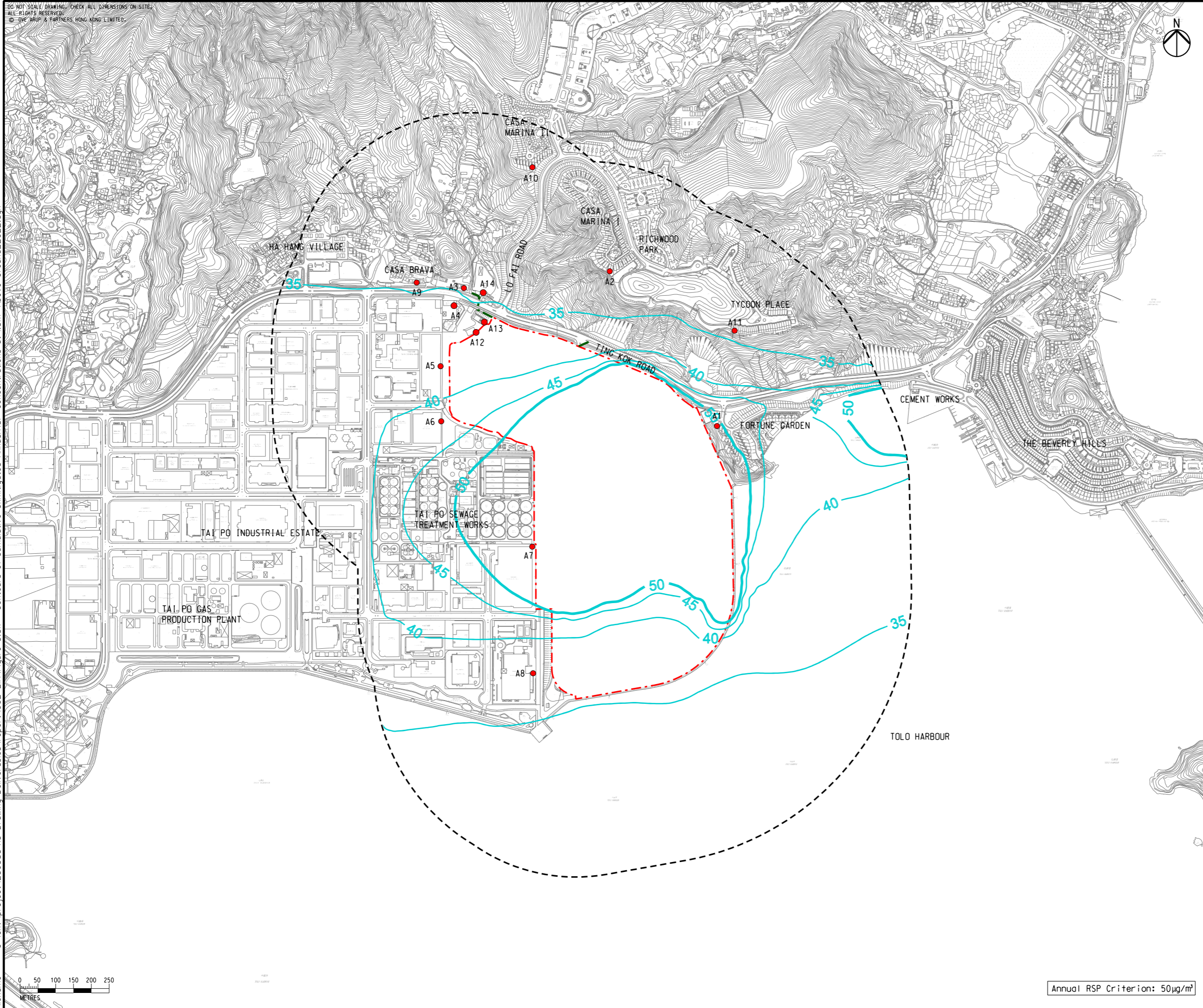
COPYRIGHT RESERVED
SHA LO TUNG DEVELOPMENT COMPANY LIMITED

DO NOT SCALE DRAWING. CHECK ALL DIMENSIONS ON-SITE.
 ALL RIGHTS RESERVED.
 © DVE ARUP & PARTNERS HONG KONG LIMITED.



- LEGEND**
- PROJECT BOUNDARY
 - PROPOSED DRAINAGE / SEWERAGE / WATERWORKS OUTSIDE SITE BOUNDARY
 - 500m ASSESSMENT AREA
 - REPRESENTATIVE EXISTING AIR SENSITIVE RECEIVER
 - 50- RSP CONTOUR, $\mu\text{g}/\text{m}^3$

Printed by : 1/7/2019
 Filename : G:\env\project\256383\13 Drawing Deliverables\report\002 EIA\Figure 3.3h - Contours of Cumulative Unmitigated Annual RSP concentrations at 1.5m Above Ground_2022.dgn



| | | | |
|-----|--------------|----|-------|
| D | FOURTH ISSUE | GL | 01/19 |
| C | THIRD ISSUE | GL | 11/18 |
| B | SECOND ISSUE | GL | 07/18 |
| A | FIRST ISSUE | GL | 04/18 |
| Rev | Description | By | Date |

Consultant
ARUP

Contract No. and Title
SHUEN WAN GOLF COURSE

Drawing title
CONTOURS OF CUMULATIVE UNMITIGATED ANNUAL RSP CONCENTRATIONS AT 1.5m ABOVE GROUND (YEAR 2022)

| | | | |
|--------------------------------|---------------|-----------------------|----------------|
| Drawing no. FIGURE 3.3h | | Rev. D | |
| Drawn GL | Date 01/19 | Checked EL | Approved FC |
| Scale 1:10000 @A3 | | Status PRELIMINARY | |

COPYRIGHT RESERVED

SHA LO TUNG DEVELOPMENT COMPANY LIMITED

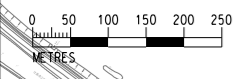
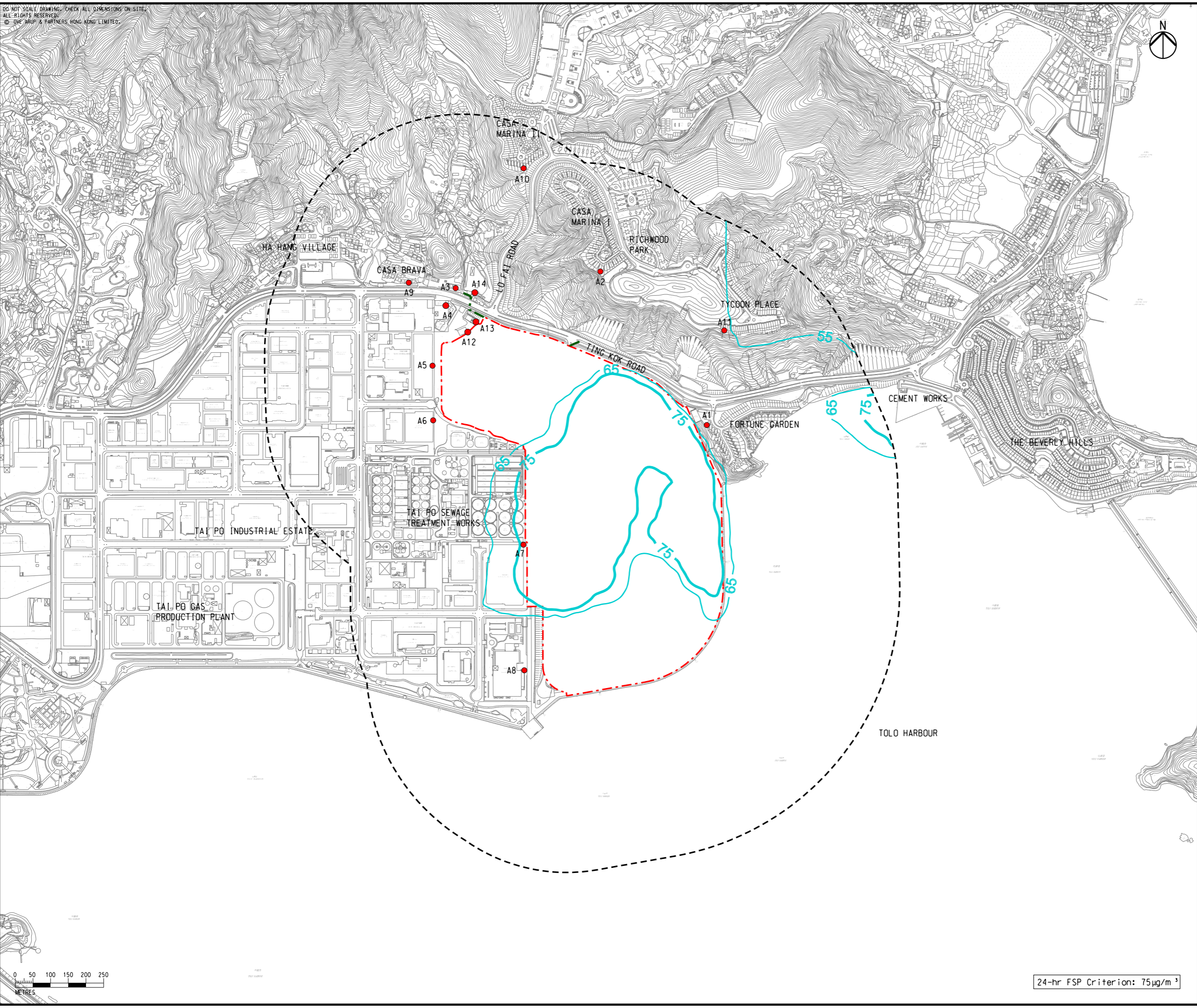
Annual RSP Criterion: $50\mu\text{g}/\text{m}^3$

DO NOT SCALE DRAWING. CHECK ALL DIMENSIONS ON-SITE.
 ALL RIGHTS RESERVED.
 © 2022 ARUP & PARTNERS HONG KONG LIMITED.



- LEGEND**
- - - PROJECT BOUNDARY
 - - - PROPOSED DRAINAGE / SEWERAGE / WATERWORKS OUTSIDE SITE BOUNDARY
 - 500m ASSESSMENT AREA
 - REPRESENTATIVE EXISTING AIR SENSITIVE RECEIVER
 - 75 — FSP CONTOUR, $\mu\text{g}/\text{m}^3$

Printed by : 1/7/2019
 Filename : G:\env\project\256383\13 Drawing Deliverables\report\002 EIA\Figure 3.3i - Contours of Cumulative Unmitigated 10th High 24-hour FSP concentrations at 1.5m Above Ground_2022.dgn



24-hr FSP Criterion: $75\mu\text{g}/\text{m}^3$

| | | | |
|-----|--------------|----|-------|
| D | FOURTH ISSUE | GL | 01/19 |
| C | THIRD ISSUE | GL | 11/18 |
| B | SECOND ISSUE | GL | 07/18 |
| A | FIRST ISSUE | GL | 04/18 |
| Rev | Description | By | Date |

Consultant
ARUP

Contract No. and Title
SHUEN WAN GOLF COURSE

Drawing title
CONTOURS OF CUMULATIVE UNMITIGATED 10th HIGH 24-HOUR FSP CONCENTRATIONS AT 1.5m ABOVE GROUND (YEAR 2022)

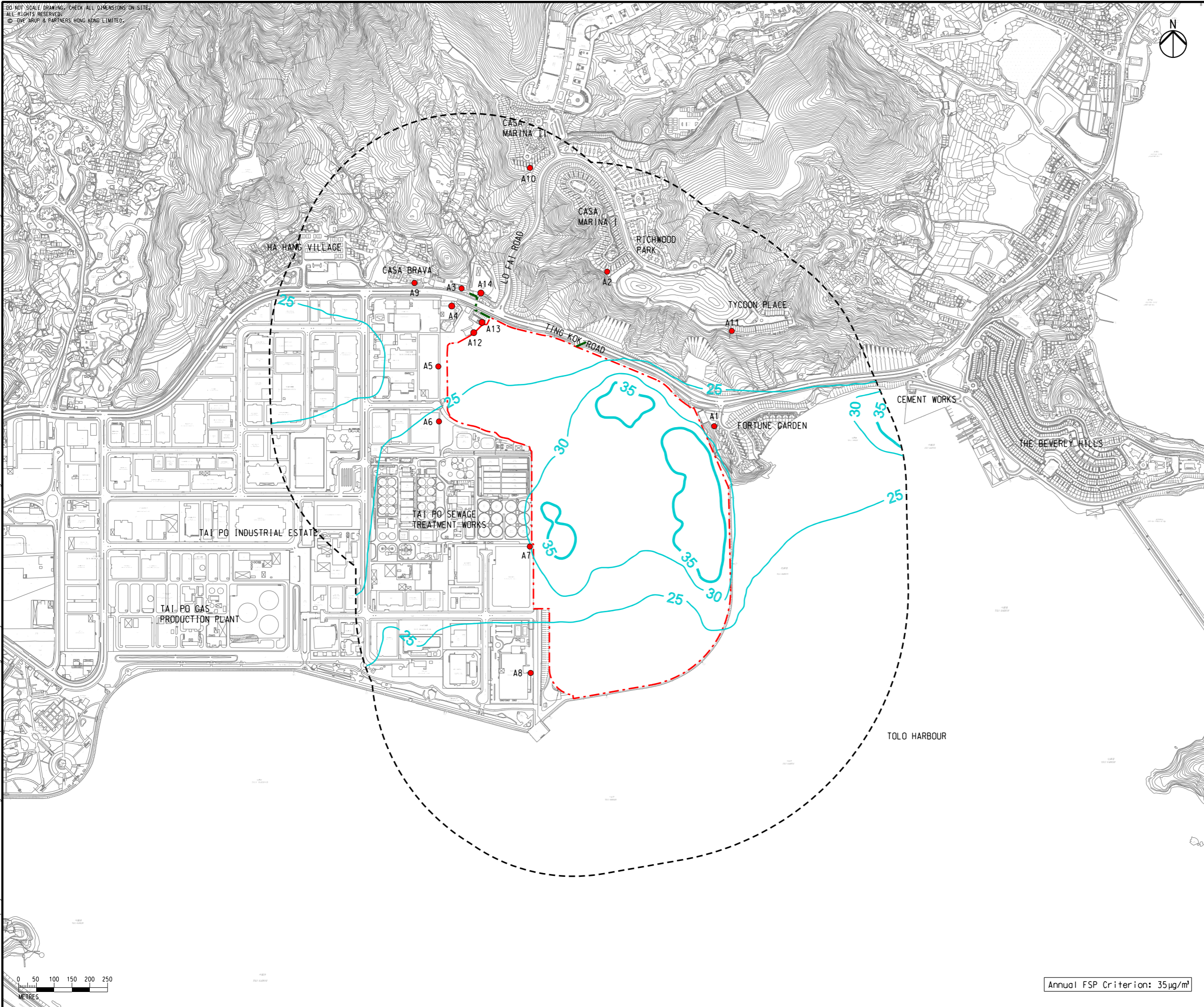
| | | | |
|-------------|--------------------|----------|-------------|
| Drawing no. | FIGURE 3.3i | Rev. | D |
| Drawn | GL | Date | 01/19 |
| Checked | EL | Approved | FC |
| Scale | 1:10000 @A3 | Status | PRELIMINARY |

COPYRIGHT RESERVED
SHA LO TUNG DEVELOPMENT COMPANY LIMITED

DO NOT SCALE DRAWING. CHECK ALL DIMENSIONS ON-SITE.
 ALL RIGHTS RESERVED.
 © 2018 ARUP & PARTNERS HONG KONG LIMITED.



- LEGEND**
- PROJECT BOUNDARY
 - PROPOSED DRAINAGE / SEWERAGE / WATERWORKS OUTSIDE SITE BOUNDARY
 - 500m ASSESSMENT AREA
 - REPRESENTATIVE EXISTING AIR SENSITIVE RECEIVER
 - 35 — FSP CONTOUR, $\mu\text{g}/\text{m}^3$



| | | | |
|-----|--------------|----|-------|
| D | FOURTH ISSUE | GL | 01/19 |
| C | THIRD ISSUE | GL | 11/18 |
| B | SECOND ISSUE | GL | 07/18 |
| A | FIRST ISSUE | GL | 04/18 |
| Rev | Description | By | Date |

Consultant
ARUP

Contract No. and Title
SHUEN WAN GOLF COURSE

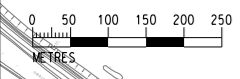
Drawing title
CONTOURS OF CUMULATIVE UNMITIGATED ANNUAL FSP CONCENTRATIONS A1.5m ABOVE GROUND (YEAR 2022)

| | | | |
|--------------------------------|---------------|-----------------------|----------------|
| Drawing no. FIGURE 3.3j | | Rev. D | |
| Drawn GL | Date 01/18 | Checked EL | Approved FC |
| Scale 1:10000 @A3 | | Status PRELIMINARY | |

COPYRIGHT RESERVED

SHA LO TUNG DEVELOPMENT COMPANY LIMITED

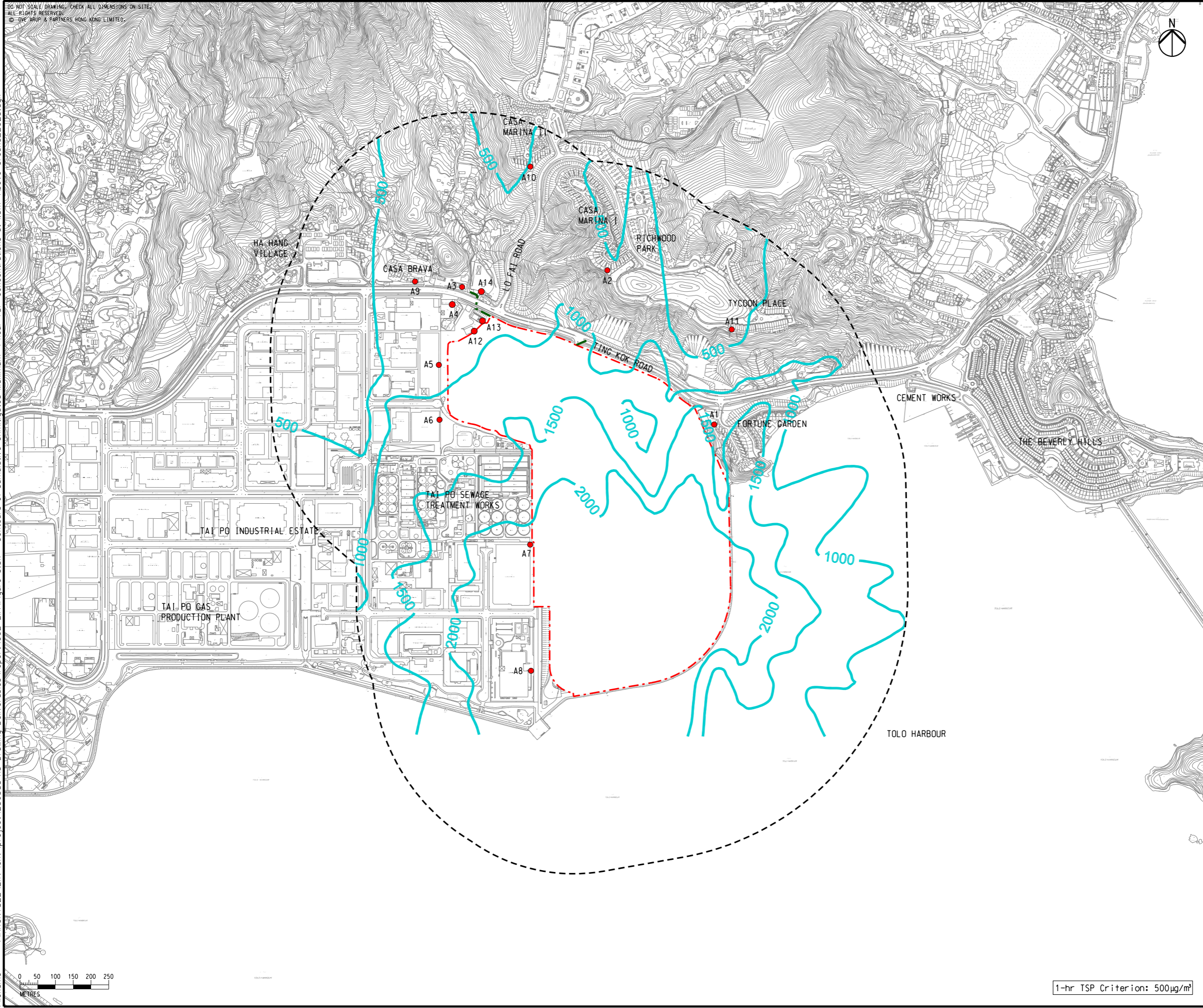
Printed by : 1/7/2019
 Filename : G:\env\project\256383\13 Drawing Deliverables\report\002 EIA\Figure 3.3j - Contours of Cumulative Unmitigated Annual FSP concentrations at 1.5m Above Ground_2022.dgn



Annual FSP Criterion: $35\mu\text{g}/\text{m}^3$

DO NOT SCALE DRAWING. CHECK ALL DIMENSIONS ON-SITE.
 ALL RIGHTS RESERVED.
 © EYE ARUP & PARTNERS HONG KONG LIMITED.

Printed by : 3/6/2019
 Filename : \\HKGNTS22\Env\project\256383\13 Drawing Deliverables\report\002 EIA\Figure 3.3k - Contours of Cumulative Unmitigated Maximum 1-hour TSP concentrations at 1.5m Above Ground_2023.dgn



- LEGEND**
- - - PROJECT BOUNDARY
 - - - PROPOSED DRAINAGE / SEWERAGE / WATERWORKS OUTSIDE SITE BOUNDARY
 - 500m ASSESSMENT AREA
 - REPRESENTATIVE EXISTING AIR SENSITIVE RECEIVER
 - 500— TSP CONTOUR, $\mu\text{g}/\text{m}^3$

| | | | |
|-----|--------------|----|-------|
| D | FOURTH ISSUE | GL | 01/19 |
| C | THIRD ISSUE | GL | 11/18 |
| B | SECOND ISSUE | GL | 07/18 |
| A | FIRST ISSUE | GL | 04/18 |
| Rev | Description | By | Date |

Consultant
ARUP

Contract No. and Title
SHUEN WAN GOLF COURSE

Drawing title
CONTOURS OF CUMULATIVE UNMITIGATED MAXIMUM 1-HOUR TSP CONCENTRATIONS AT 1.5m ABOVE GROUND (YEAR 2023)

| | | | |
|--------------------------------|---------------|-----------------------|----------------|
| Drawing no. FIGURE 3.3k | | Rev. D | |
| Drawn GL | Date 01/19 | Checked EL | Approved FC |
| Scale 1:10000 @A3 | | Status PRELIMINARY | |

COPYRIGHT RESERVED
SHA LO TUNG DEVELOPMENT COMPANY LIMITED

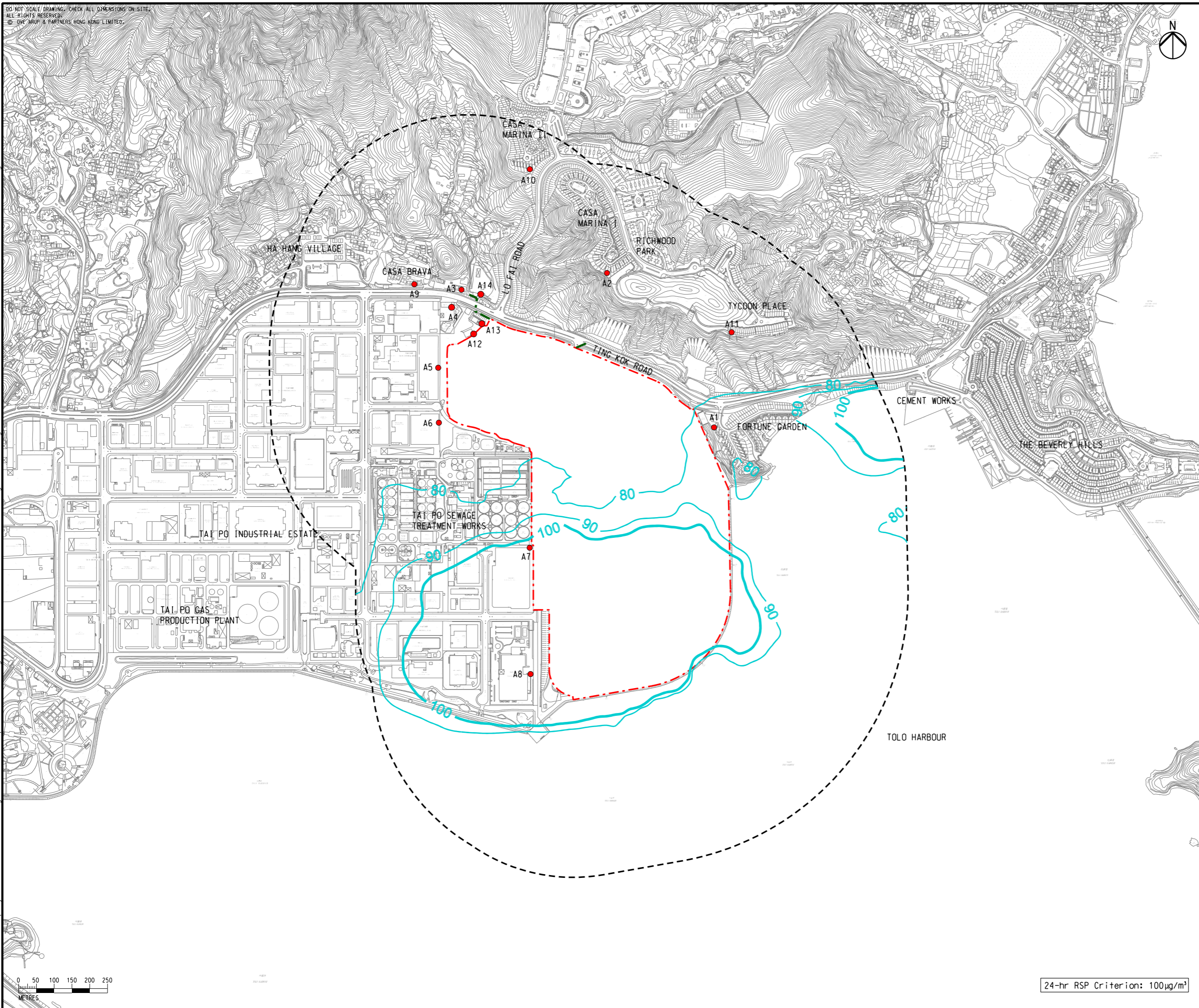
1-hr TSP Criterion: $500\mu\text{g}/\text{m}^3$

DO NOT SCALE DRAWING. CHECK ALL DIMENSIONS ON-SITE.
 ALL RIGHTS RESERVED.
 © EYE ARUP & PARTNERS HONG KONG LIMITED.



- LEGEND**
- PROJECT BOUNDARY
 - PROPOSED DRAINAGE / SEWERAGE / WATERWORKS OUTSIDE SITE BOUNDARY
 - 500m ASSESSMENT AREA
 - REPRESENTATIVE EXISTING AIR SENSITIVE RECEIVER
 - 100- RSP CONTOUR, $\mu\text{g}/\text{m}^3$

Printed by : 1/7/2019
 Filename : G:\env\project\256383\13 Drawing Deliverables\report\002 EIA\Figure 3.31 - Contours of Cumulative Unmitigated 10th High 24-hour RSP concentrations at 1.5m Above Ground_2023.dgn



24-hr RSP Criterion: $100\mu\text{g}/\text{m}^3$

| | | | |
|-----|--------------|----|-------|
| D | FOURTH ISSUE | GL | 01/19 |
| C | THIRD ISSUE | GL | 11/18 |
| B | SECOND ISSUE | GL | 07/18 |
| A | FIRST ISSUE | GL | 04/18 |
| Rev | Description | By | Date |

Consultant
ARUP

Contract No. and Title
SHUEN WAN GOLF COURSE

Drawing title
CONTOURS OF CUMULATIVE UNMITIGATED 10th HIGH 24-HOUR RSP CONCENTRATIONS AT 1.5m ABOVE GROUND (YEAR 2023)

| | | | |
|-------------|--------------------|----------|-------------|
| Drawing no. | FIGURE 3.31 | Rev. | D |
| Drawn | GL | Date | 01/19 |
| Checked | EL | Approved | FC |
| Scale | 1:10000 @A3 | Status | PRELIMINARY |

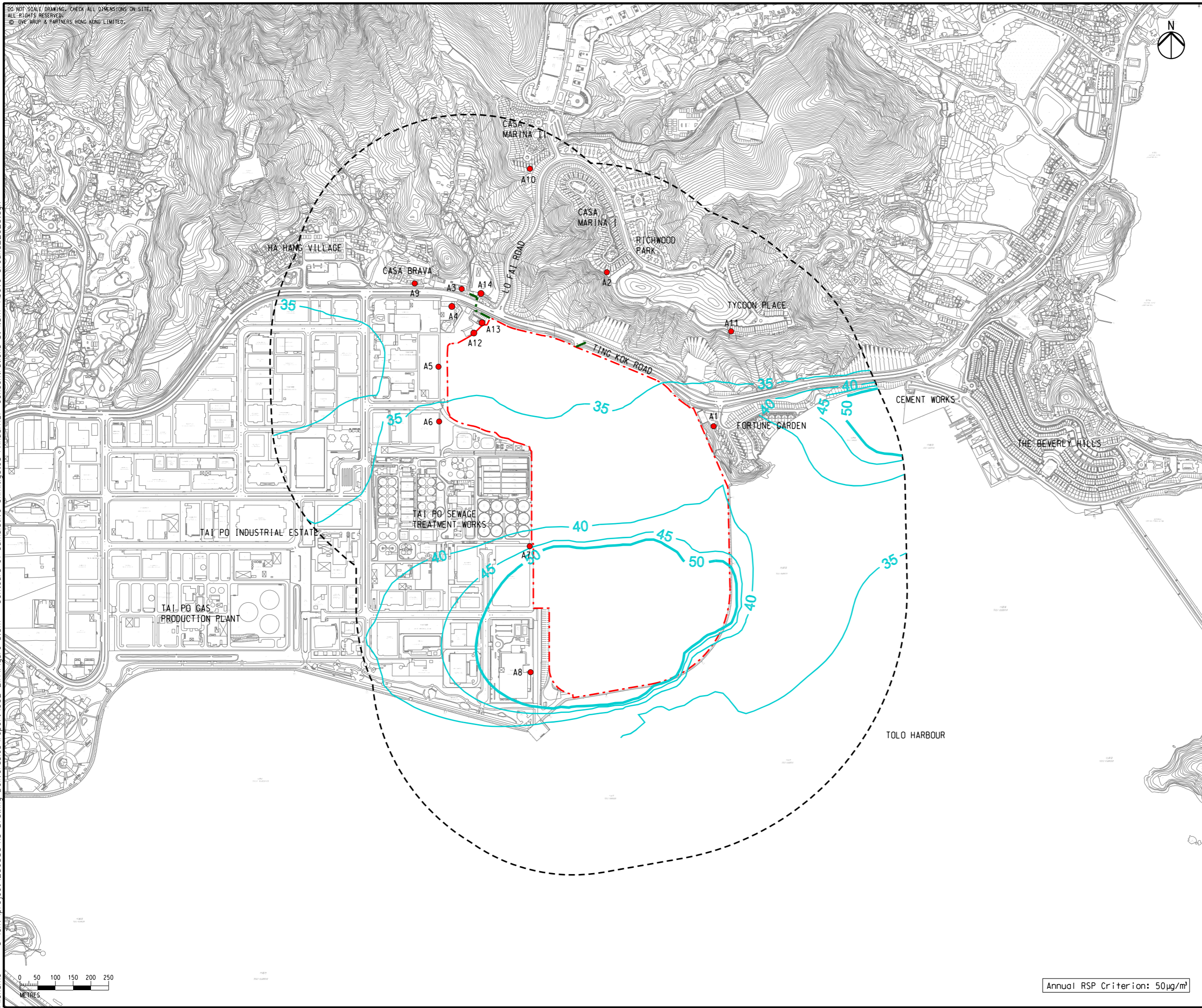
COPYRIGHT RESERVED
SHA LO TUNG DEVELOPMENT COMPANY LIMITED

DO NOT SCALE DRAWING. CHECK ALL DIMENSIONS ON-SITE.
 ALL RIGHTS RESERVED.
 © EYE ARUP & PARTNERS HONG KONG LIMITED.



- LEGEND**
- PROJECT BOUNDARY
 - PROPOSED DRAINAGE / SEWERAGE / WATERWORKS OUTSIDE SITE BOUNDARY
 - 500m ASSESSMENT AREA
 - REPRESENTATIVE EXISTING AIR SENSITIVE RECEIVER
 - 50 - RSP CONTOUR, $\mu\text{g}/\text{m}^3$

Printed by : 1/7/2019
 Filename : G:\env\project\256383\13 Drawing Deliverables\report\002 EIA\Figure 3.3m - Contours of Cumulative Unmitigated Annual RSP concentrations at 1.5m Above Ground_2023.dgn



| | | | |
|-----|--------------|----|-------|
| D | FOURTH ISSUE | GL | 01/19 |
| C | THIRD ISSUE | GL | 11/18 |
| B | SECOND ISSUE | GL | 07/18 |
| A | FIRST ISSUE | GL | 04/18 |
| Rev | Description | By | Date |

Consultant
ARUP

Contract No. and Title
SHUEN WAN GOLF COURSE

Drawing title
CONTOURS OF CUMULATIVE UNMITIGATED ANNUAL RSP CONCENTRATIONS AT 1.5m ABOVE GROUND (YEAR 2023)

| | | | |
|-------------|--------------------|----------|-------------|
| Drawing no. | FIGURE 3.3m | Rev. | D |
| Drawn | GL | Date | 01/19 |
| Checked | EL | Approved | FC |
| Scale | 1:10000 @A3 | Status | PRELIMINARY |

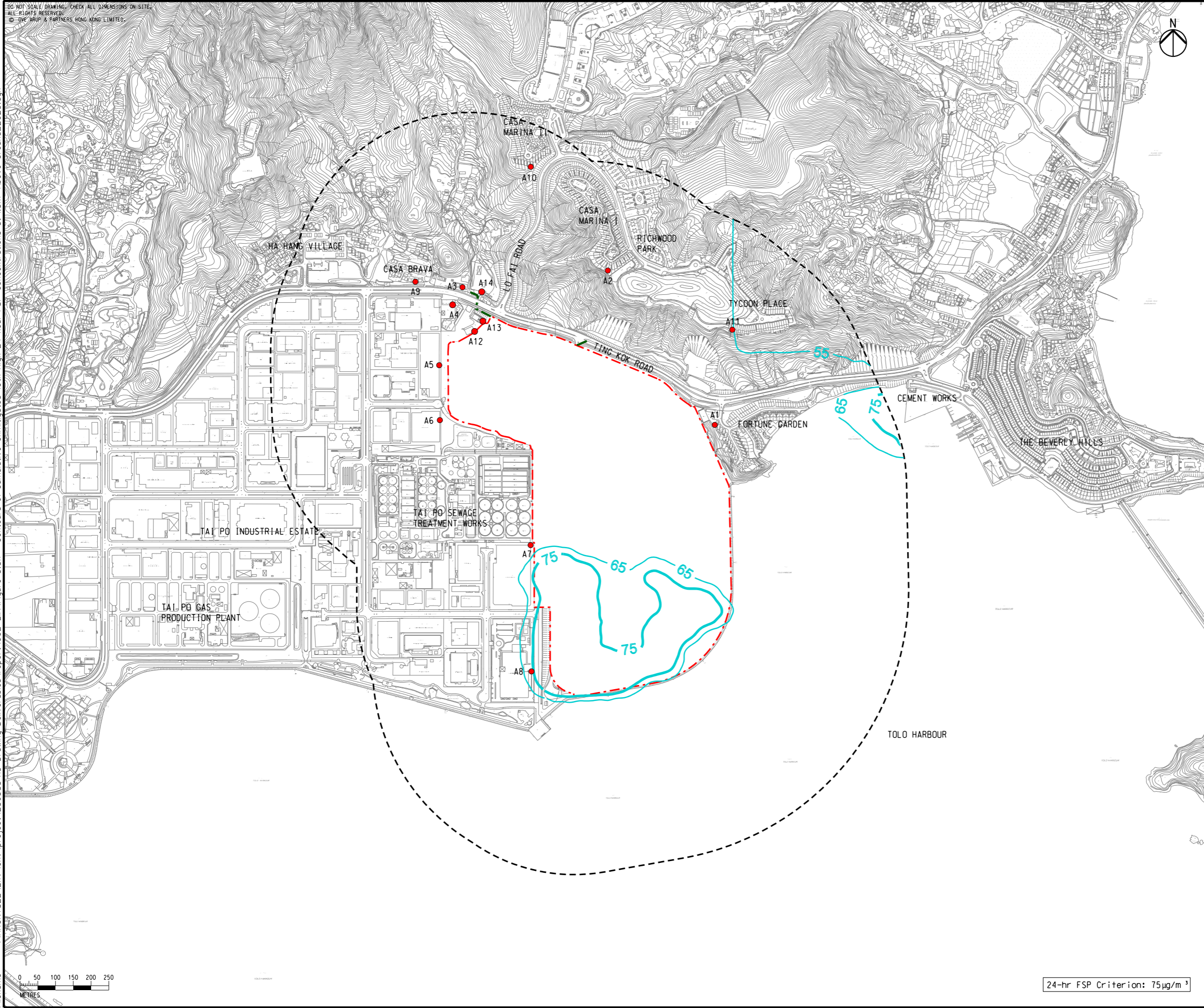
COPYRIGHT RESERVED

SHA LO TUNG DEVELOPMENT COMPANY LIMITED

Annual RSP Criterion: $50\mu\text{g}/\text{m}^3$

DO NOT SCALE DRAWING. CHECK ALL DIMENSIONS ON-SITE.
 ALL RIGHTS RESERVED.
 © EYE ARUP & PARTNERS HONG KONG LIMITED.

Printed by : 1/7/2019
 Filename : \\HKGNTS22\env\project\256383\13 Drawing Deliverables\report\002 EIA\Figure 3.3n - Contours of Cumulative Unmitigated 10th High 24-hour FSP concentrations at 1.5m Above Ground_2023.dgn



- LEGEND**
- - - PROJECT BOUNDARY
 - - - PROPOSED DRAINAGE / SEWERAGE / WATERWORKS OUTSIDE SITE BOUNDARY
 - 500m ASSESSMENT AREA
 - REPRESENTATIVE EXISTING AIR SENSITIVE RECEIVER
 - 75 — FSP CONTOUR, $\mu\text{g}/\text{m}^3$

| | | | |
|-----|--------------|----|-------|
| D | FOURTH ISSUE | GL | 01/19 |
| C | THIRD ISSUE | GL | 11/18 |
| B | SECOND ISSUE | GL | 07/18 |
| A | FIRST ISSUE | GL | 04/18 |
| Rev | Description | By | Date |

Consultant
ARUP

Contract No. and Title
SHUEN WAN GOLF COURSE

Drawing title
CONTOURS OF CUMULATIVE UNMITIGATED 10th HIGH 24-HOUR FSP CONCENTRATIONS AT 1.5m ABOVE GROUND (YEAR 2023)

| | | | |
|--------------------------------|---------------|-----------------------|----------------|
| Drawing no. FIGURE 3.3n | | Rev. D | |
| Drawn GL | Date 01/19 | Checked EL | Approved FC |
| Scale 1:10000 @A3 | | Status PRELIMINARY | |

COPYRIGHT RESERVED
SHA LO TUNG DEVELOPMENT COMPANY LIMITED

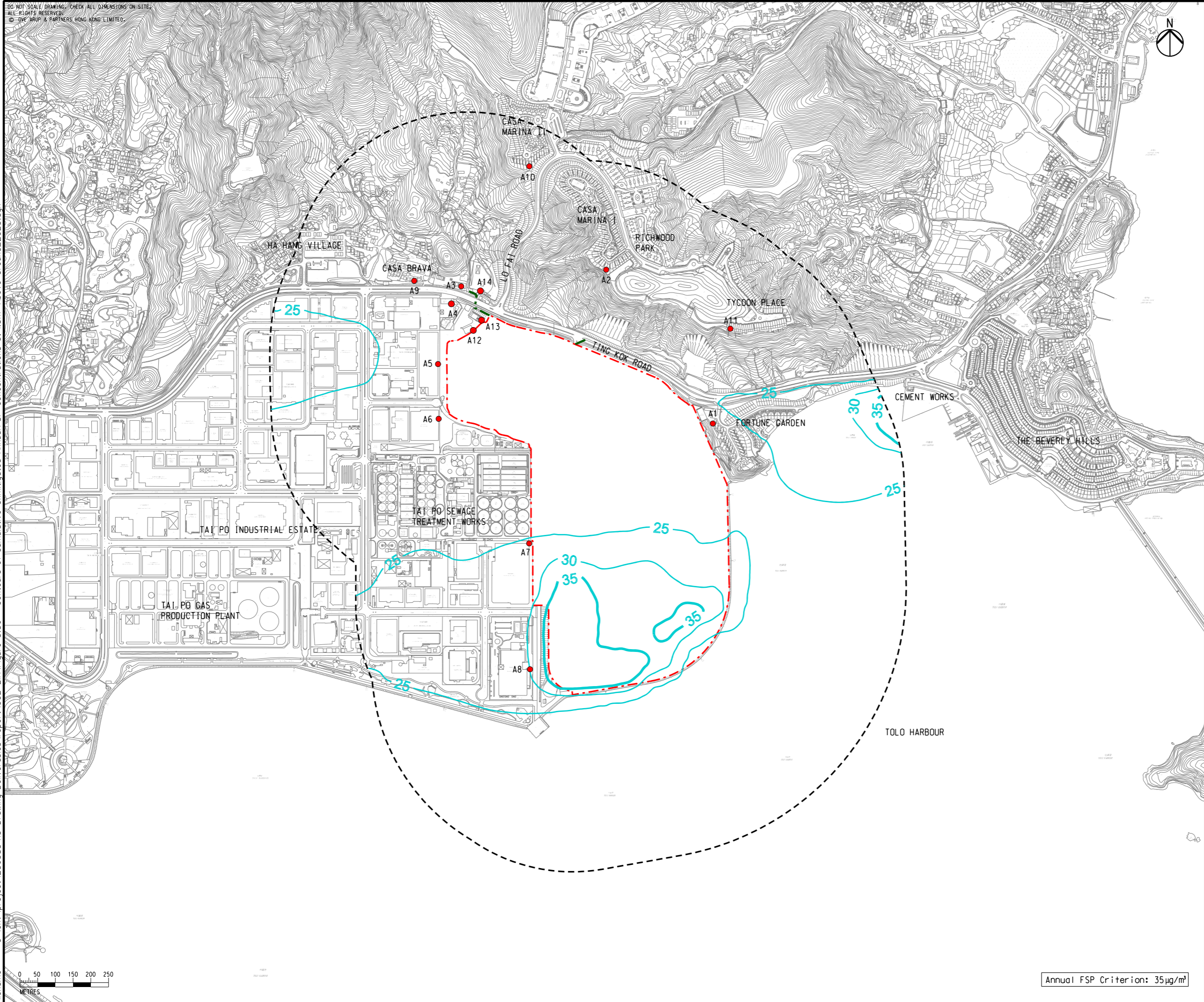
24-hr FSP Criterion: $75\mu\text{g}/\text{m}^3$

DO NOT SCALE DRAWING. CHECK ALL DIMENSIONS ON-SITE.
 ALL RIGHTS RESERVED.
 © 2019 ARUP & PARTNERS HONG KONG LIMITED.



- LEGEND**
- PROJECT BOUNDARY
 - PROPOSED DRAINAGE / SEWERAGE / WATERWORKS OUTSIDE SITE BOUNDARY
 - 500m ASSESSMENT AREA
 - REPRESENTATIVE EXISTING AIR SENSITIVE RECEIVER
 - 35 — FSP CONTOUR, $\mu\text{g}/\text{m}^3$

Printed by : 1/7/2019
 Filename : G:\env\project\256383\13 Drawing Deliverables\report\002 EIA\Figure 3.3o - Contours of Cumulative Unmitigated Annual FSP concentrations at 1.5m Above Ground_2023.dgn



Annual FSP Criterion: $35\mu\text{g}/\text{m}^3$

| | | | |
|-----|--------------|----|-------|
| D | FOURTH ISSUE | GL | 01/19 |
| C | THIRD ISSUE | GL | 11/18 |
| B | SECOND ISSUE | GL | 07/18 |
| A | FIRST ISSUE | GL | 04/18 |
| Rev | Description | By | Date |

Consultant
ARUP

Contract No. and Title
SHUEN WAN GOLF COURSE

Drawing title
CONTOURS OF CUMULATIVE UNMITIGATED ANNUAL FSP CONCENTRATIONS A1.5m ABOVE GROUND (YEAR 2023)

| | | | |
|-------------|--------------------|----------|-------------|
| Drawing no. | FIGURE 3.3o | Rev. | D |
| Drawn | GL | Date | 01/19 |
| Checked | EL | Approved | FC |
| Scale | 1:10000 @A3 | Status | PRELIMINARY |

COPYRIGHT RESERVED
SHA LO TUNG DEVELOPMENT COMPANY LIMITED