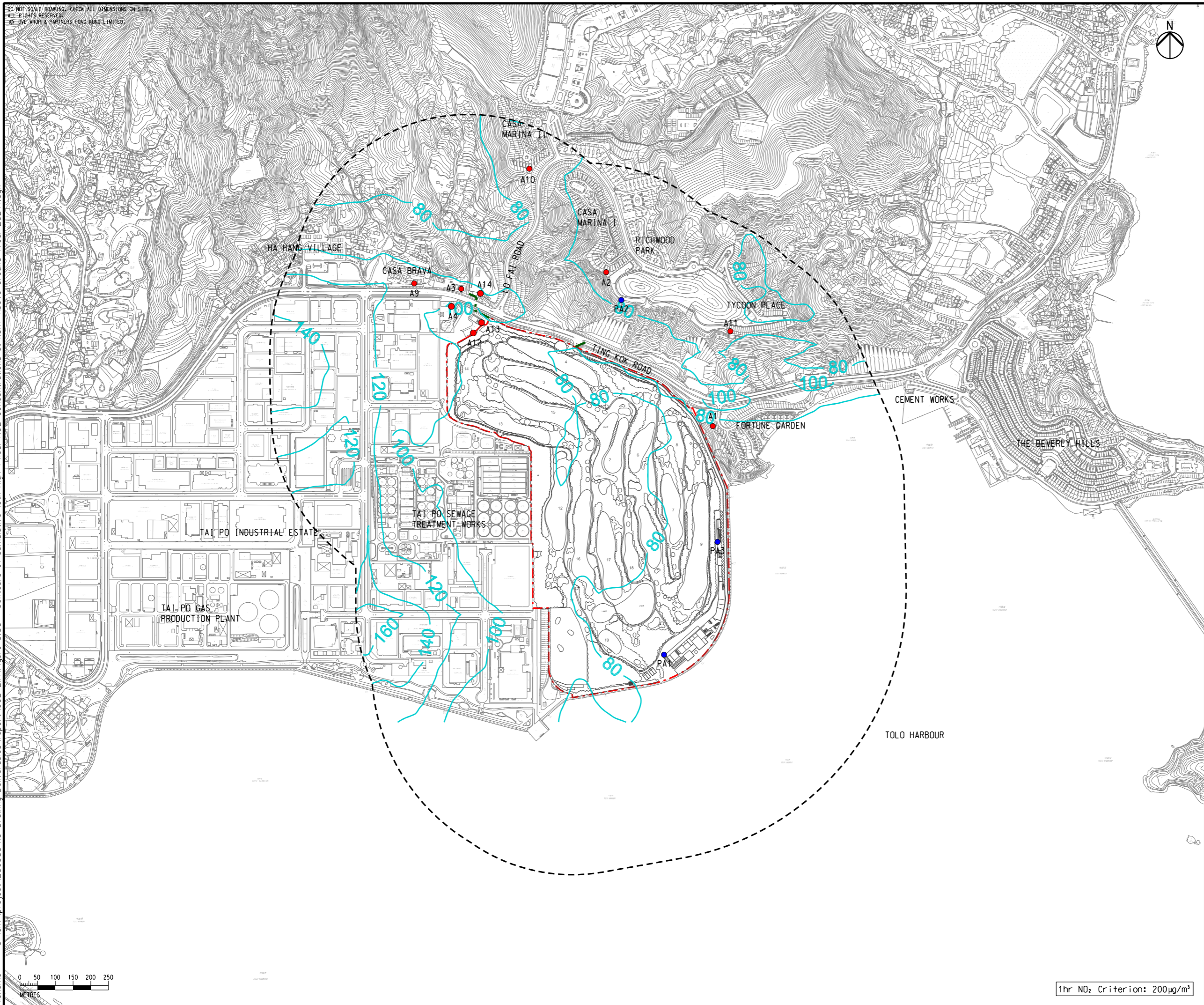


EGD NOT SCALE DRAWING. CHECK ALL DIMENSIONS ON-SITE.  
 ALL RIGHTS RESERVED.  
 © EYE ARUP & PARTNERS HONG KONG LIMITED.



- LEGEND**
- PROJECT BOUNDARY
  - PROPOSED DRAINAGE / SEWERAGE / WATERWORKS OUTSIDE SITE BOUNDARY
  - 500m ASSESSMENT AREA
  - REPRESENTATIVE EXISTING AIR SENSITIVE RECEIVER
  - REPRESENTATIVE PLANNED AIR SENSITIVE RECEIVER
  - 200— NO<sub>2</sub> CONTOUR, µg/m<sup>3</sup>

Printed by : 3/18/2019  
 Filename : G:\env\project\256383\13 Drawing Deliverables\report\002 EIA\Figure 3.8a - Contours of Cumulative 19th Highest 1-hour NO<sub>2</sub> concentrations at 1.5m Above Ground (Year 2024).dgn



E	FIFTH ISSUE	GL	03/19
D	FOURTH ISSUE	GL	01/19
C	THIRD ISSUE	GL	11/18
B	SECOND ISSUE	GL	07/18
Rev	Description	By	Date

Consultant  
**ARUP**

Contract No. and Title  
**SHUEN WAN GOLF COURSE**

Drawing title  
**CONTOURS OF CUMULATIVE 19th HIGHEST 1-HOUR NO<sub>2</sub> CONCENTRATIONS AT 1.5m ABOVE GROUND (YEAR 2024)**

Drawing no.	<b>FIGURE 3.8a</b>	Rev.	<b>E</b>
Drawn	GL	Date	03/19
Checked	EL	Approved	FC
Scale	1:10000 @A3	Status	PRELIMINARY

COPYRIGHT RESERVED

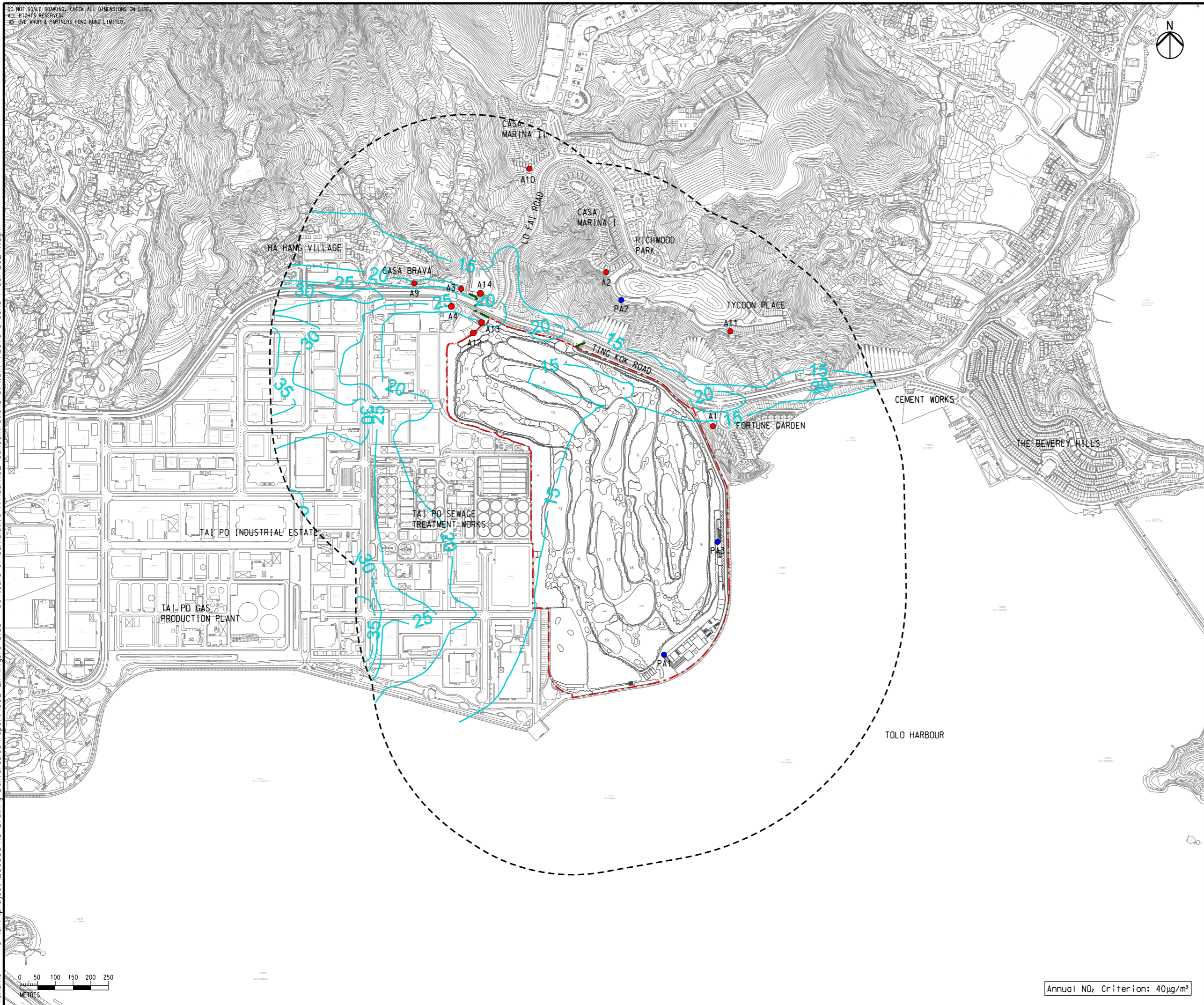
**SHA LO TUNG DEVELOPMENT COMPANY LIMITED**

DO NOT SCALE DRAWING. CHECK ALL DIMENSIONS ON-SITE.  
 ALL RIGHTS RESERVED.  
 © DVE ARUP & PARTNERS HONG KONG LIMITED.



- LEGEND**
- PROJECT BOUNDARY
  - PROPOSED DRAINAGE / SEWERAGE / WATERWORKS OUTSIDE SITE BOUNDARY
  - 500m ASSESSMENT AREA
  - REPRESENTATIVE EXISTING AIR SENSITIVE RECEIVER
  - REPRESENTATIVE PLANNED AIR SENSITIVE RECEIVER
  - 40 — NO<sub>2</sub> CONTOUR, μg/m<sup>3</sup>

Printed by : 3/18/2019  
 Filename : G:\env\project\256383\13 Drawing Deliverables\report\002 EIA\Figure 3.8b - Contours of Cumulative Annual NO<sub>2</sub> concentrations at 1.5m Above Ground (Year 2024).dgn



Annual NO<sub>2</sub> Criterion: 40μg/m<sup>3</sup>

E	FIFTH ISSUE	GL	03/19
D	FOURTH ISSUE	GL	01/19
C	THIRD ISSUE	GL	11/18
B	SECOND ISSUE	GL	07/18
Rev	Description	By	Date

Consultant  
**ARUP**

Contract No. and Title  
**SHUEN WAN GOLF COURSE**

Drawing title  
**CONTOURS OF CUMULATIVE ANNUAL NO<sub>2</sub> CONCENTRATIONS AT 1.5m ABOVE GROUND (YEAR 2024)**

Drawing no. <b>FIGURE 3.8b</b>		Rev. <b>E</b>	
Drawn EL	Date 03/19	Checked EL	Approved FC
Scale 1:10000 @A3		Status PRELIMINARY	

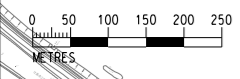
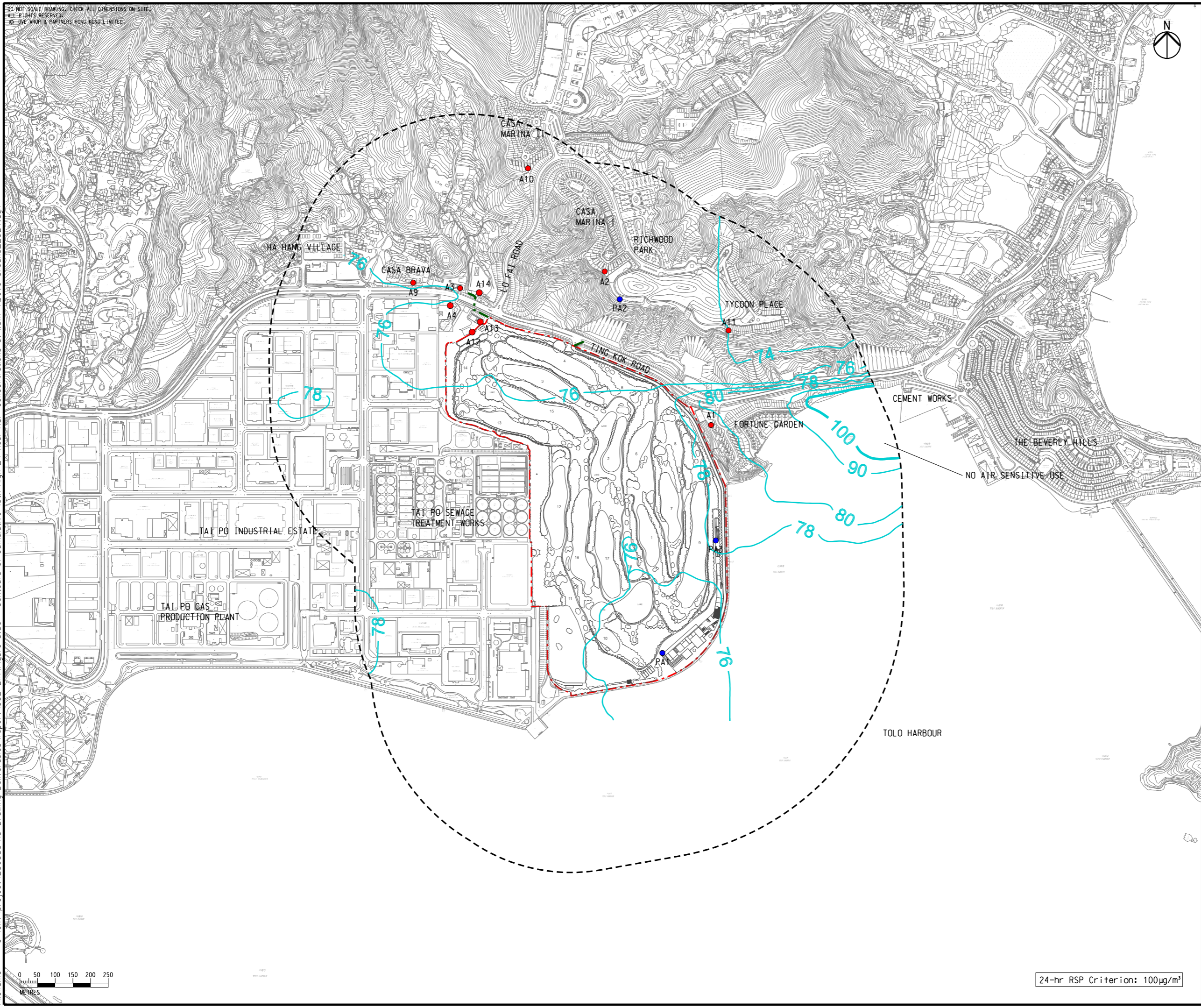
COPYRIGHT RESERVED  
**SHA LO TUNG DEVELOPMENT COMPANY LIMITED**

DO NOT SCALE DRAWING. CHECK ALL DIMENSIONS ON-SITE.  
 ALL RIGHTS RESERVED.  
 © EYE ARUP & PARTNERS HONG KONG LIMITED.



- LEGEND**
- PROJECT BOUNDARY
  - PROPOSED DRAINAGE / SEWERAGE / WATERWORKS OUTSIDE SITE BOUNDARY
  - 500m ASSESSMENT AREA
  - REPRESENTATIVE EXISTING AIR SENSITIVE RECEIVER
  - REPRESENTATIVE PLANNED AIR SENSITIVE RECEIVER
  - 100— RSP CONTOUR,  $\mu\text{g}/\text{m}^3$

Printed by : 3/18/2019  
 Filename : G:\env\project\256383\13 Drawing Deliverables\report\002 EIA\Figure 3.8c - Contours of Cumulative 10th High 24-hour RSP concentrations at 1.5m Above Ground\_2024.dgn



24-hr RSP Criterion:  $100\mu\text{g}/\text{m}^3$

E	FIFTH ISSUE	GL	03/19
D	FOURTH ISSUE	GL	01/19
C	THIRD ISSUE	GL	11/18
B	SECOND ISSUE	GL	07/18
Rev	Description	By	Date

Consultant  
**ARUP**

Contract No. and Title  
**SHUEN WAN GOLF COURSE**

Drawing title  
**CONTOURS OF CUMULATIVE 10th HIGH 24-HOUR RSP CONCENTRATIONS AT 1.5m ABOVE GROUND (YEAR 2024)**

Drawing no. <b>FIGURE 3.8c</b>		Rev. <b>E</b>	
Drawn GL	Date 03/19	Checked EL	Approved FC
Scale 1:10000 @A3		Status PRELIMINARY	

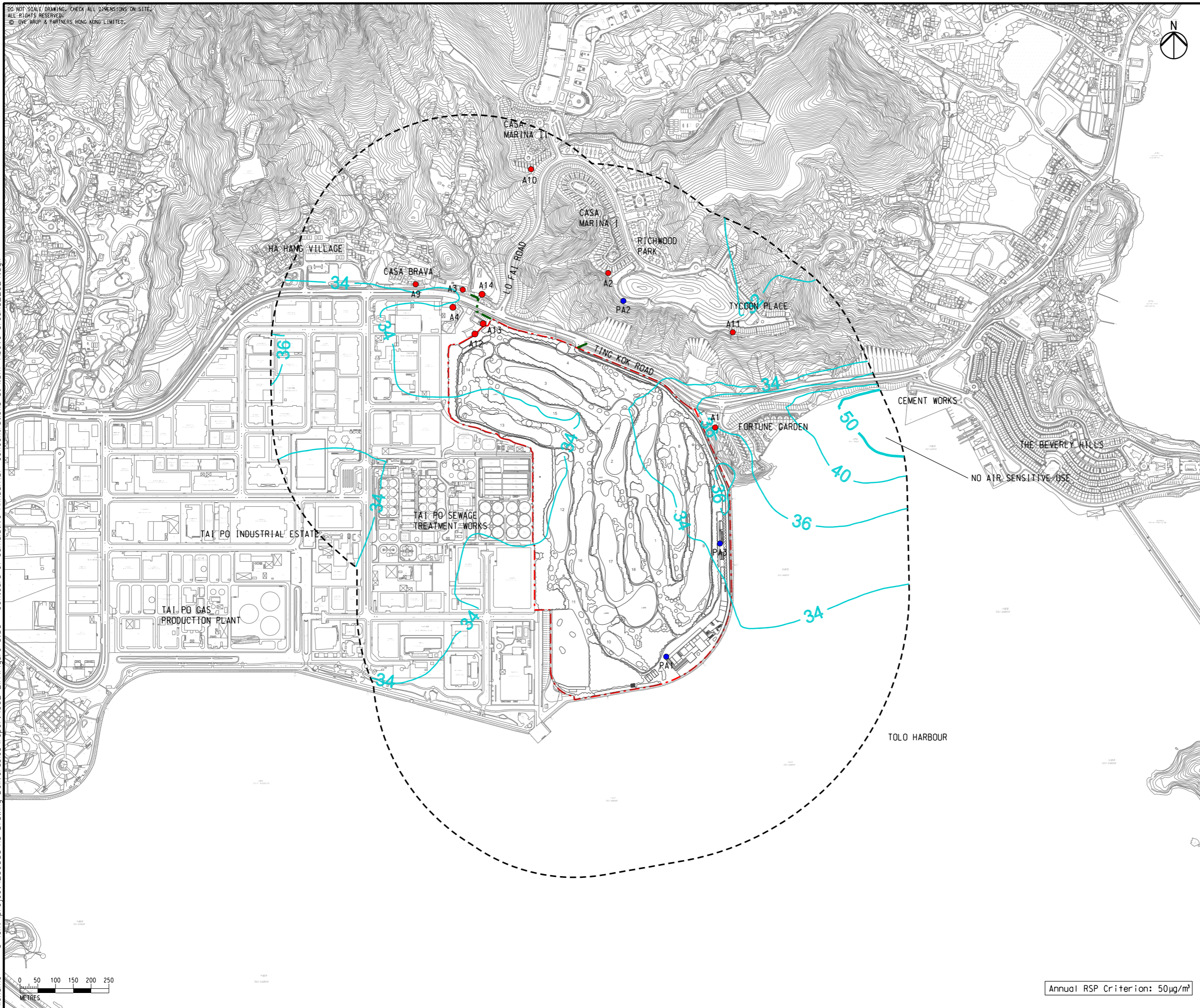
COPYRIGHT RESERVED  
**SHA LO TUNG DEVELOPMENT COMPANY LIMITED**

DO NOT SCALE DRAWING. CHECK ALL DIMENSIONS ON-SITE.  
 ALL RIGHTS RESERVED.  
 © DVE ARUP & PARTNERS HONG KONG LIMITED.



- LEGEND**
- PROJECT BOUNDARY
  - PROPOSED DRAINAGE / SEWERAGE / WATERWORKS OUTSIDE SITE BOUNDARY
  - 500m ASSESSMENT AREA
  - REPRESENTATIVE EXISTING AIR SENSITIVE RECEIVER
  - REPRESENTATIVE PLANNED AIR SENSITIVE RECEIVER
  - 50 — RSP CONTOUR,  $\mu\text{g}/\text{m}^3$

Printed by : 3/18/2019  
 Filename : G:\env\project\256383\13 Drawing Deliverables\report\002 EIA\Figure 3.8d - Contours of Cumulative Annual RSP concentrations at 1.5m Above Ground\_2024.dgn



E	FIFTH ISSUE	GL	03/19
D	FOURTH ISSUE	GL	01/19
C	THIRD ISSUE	GL	11/18
B	SECOND ISSUE	GL	07/18
Rev	Description	By	Date

Consultant  
**ARUP**

Contract No. and Title  
**SHUEN WAN GOLF COURSE**

Drawing title  
**CONTOURS OF CUMULATIVE ANNUAL RSP CONCENTRATIONS AT 1.5m ABOVE GROUND (YEAR 2024)**

Drawing no. <b>FIGURE 3.8d</b>		Rev. <b>E</b>	
Drawn GL	Date 03/19	Checked EL	Approved FC
Scale 1:10000 @A3		Status PRELIMINARY	

COPYRIGHT RESERVED  
**SHA LO TUNG DEVELOPMENT COMPANY LIMITED**

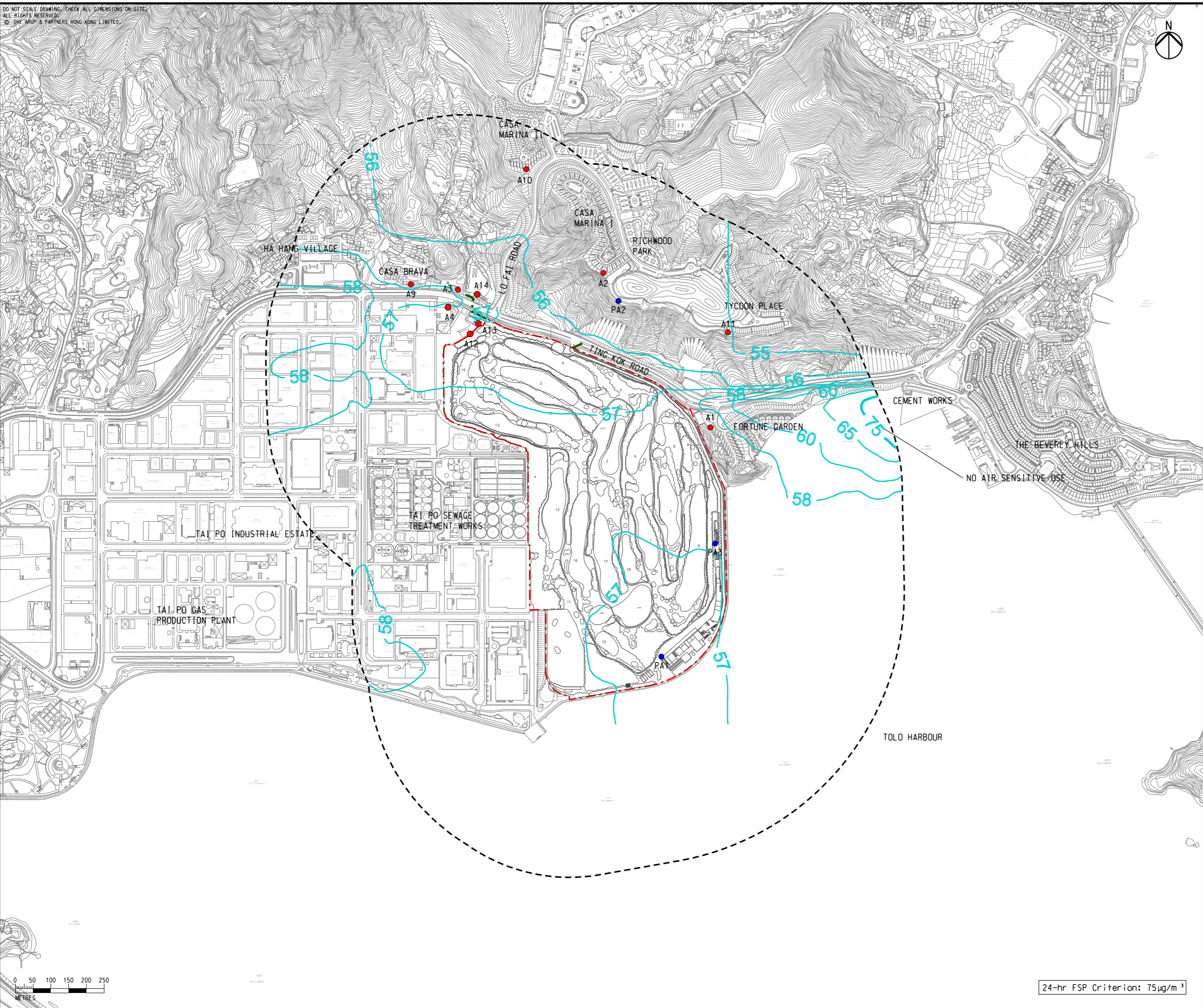
Annual RSP Criterion:  $50\mu\text{g}/\text{m}^3$

DO NOT SCALE DRAWING. CHECK ALL DIMENSIONS ON-SITE.  
 ALL RIGHTS RESERVED.  
 © DVE ARUP & PARTNERS HONG KONG LIMITED.



- LEGEND**
- PROJECT BOUNDARY
  - PROPOSED DRAINAGE / SEWERAGE / WATERWORKS OUTSIDE SITE BOUNDARY
  - 500m ASSESSMENT AREA
  - REPRESENTATIVE EXISTING AIR SENSITIVE RECEIVER
  - REPRESENTATIVE PLANNED AIR SENSITIVE RECEIVER
  - 75 — FSP CONTOUR,  $\mu\text{g}/\text{m}^3$

Printed by : 3/18/2019  
 Filename : G:\env\project\256383\13 Drawing Deliverables\report\002 EIA\Figure 3.8e - Contours of Cumulative 10th High 24-hour FSP concentrations at 1.5m Above Ground\_2024.dgn



E	FIFTH ISSUE	GL	03/19
D	FOURTH ISSUE	GL	01/19
C	THIRD ISSUE	GL	11/18
B	SECOND ISSUE	GL	07/18
Rev	Description	By	Date

Consultant  
**ARUP**

Contract No. and Title  
**SHUEN WAN GOLF COURSE**

Drawing title  
**CONTOURS OF CUMULATIVE 10th HIGH 24-HOUR FSP CONCENTRATIONS AT 1.5m ABOVE GROUND (YEAR 2024)**

Drawing no. <b>FIGURE 3.8e</b>		Rev. <b>E</b>	
Drawn GL	Date 03/19	Checked EL	Approved FC
Scale 1:10000 @A3		Status PRELIMINARY	

COPYRIGHT RESERVED  
**SHA LO TUNG DEVELOPMENT COMPANY LIMITED**

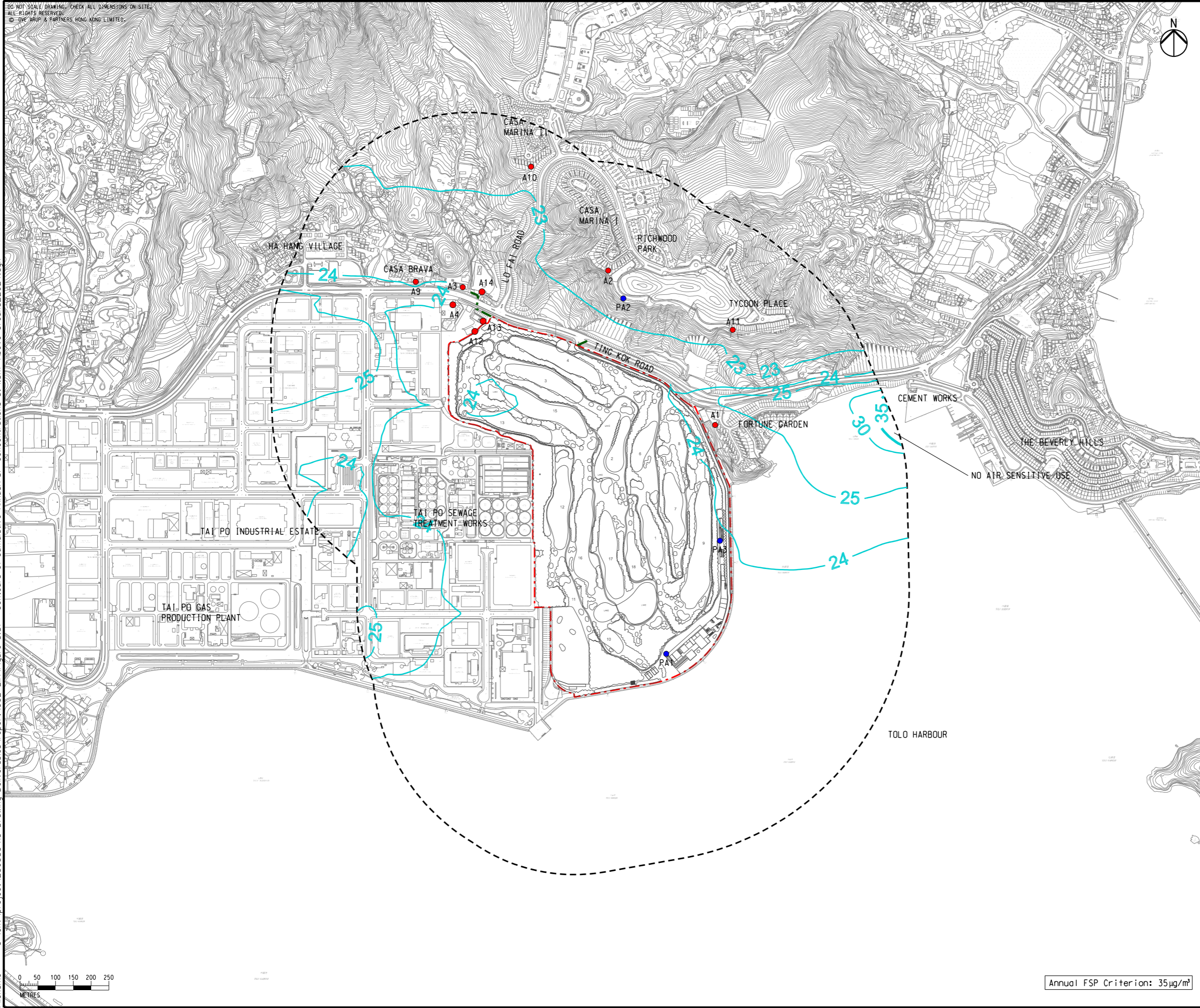
24-hr FSP Criterion:  $75\mu\text{g}/\text{m}^3$

DO NOT SCALE DRAWING. CHECK ALL DIMENSIONS ON-SITE.  
 ALL RIGHTS RESERVED.  
 © DVE ARUP & PARTNERS HONG KONG LIMITED.



- LEGEND**
- PROJECT BOUNDARY
  - PROPOSED DRAINAGE / SEWERAGE / WATERWORKS OUTSIDE SITE BOUNDARY
  - 500m ASSESSMENT AREA
  - REPRESENTATIVE EXISTING AIR SENSITIVE RECEIVER
  - REPRESENTATIVE PLANNED AIR SENSITIVE RECEIVER
  - 35 — FSP CONTOUR,  $\mu\text{g}/\text{m}^3$

Printed by : 3/18/2019  
 Filename : G:\env\project\256383\13 Drawing Deliverables\report\002 EIA\Figure 3.8f - Contours of Cumulative Annual FSP concentrations at 1.5m Above Ground\_2024.dgn



E	FIFTH ISSUE	GL	03/19
D	FOURTH ISSUE	GL	01/19
C	THIRD ISSUE	GL	11/18
B	SECOND ISSUE	GL	07/18
Rev	Description	By	Date

Consultant  
**ARUP**

Contract No. and Title  
**SHUEN WAN GOLF COURSE**

Drawing title  
**CONTOURS OF CUMULATIVE ANNUAL FSP CONCENTRATIONS AT 1.5m ABOVE GROUND (YEAR 2024)**

Drawing no. <b>FIGURE 3.8f</b>		Rev. <b>E</b>	
Drawn GL	Date 03/19	Checked EL	Approved FC
Scale 1:10000 @A3		Status PRELIMINARY	

COPYRIGHT RESERVED

**SHA LO TUNG DEVELOPMENT COMPANY LIMITED**



Annual FSP Criterion:  $35 \mu\text{g}/\text{m}^3$