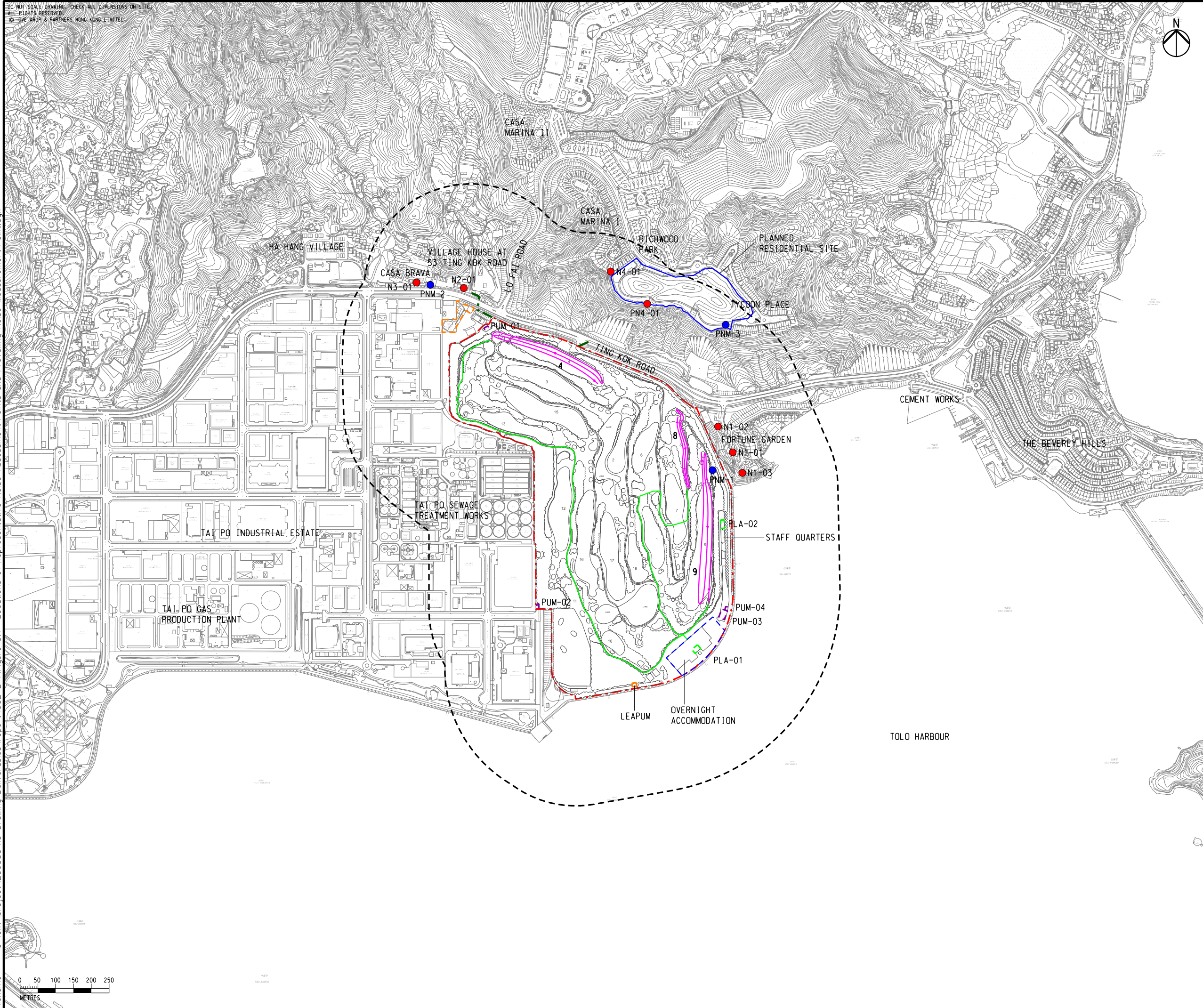


DO NOT SCALE DRAWING. CHECK ALL DIMENSIONS ON-SITE.  
 ALL RIGHTS RESERVED.  
 © EYE ARUP & PARTNERS HONG KONG LIMITED.



- LEGEND**
- PROJECT BOUNDARY
  - PROPOSED DRAINAGE / SEWERAGE / WATERWORKS OUTSIDE SITE BOUNDARY
  - 300m ASSESSMENT AREA
  - NOISE ASSESSMENT POINT
  - PREVAILING NOISE MEASUREMENT POINT
  - PLANNED RESIDENTIAL SITE
  - PROPOSED UPGRADING OF TING KOK ROAD SEWAGE PUMPING STATIONS AND SEWERAGE (TKRSPS NO.5)
  - PROPOSED IRRIGATION / SEWERAGE / DRAINAGE PUMPING STATION
  - PROPOSED ANCILLARY FACILITIES
  - PROPOSED EXHAUST
  - RELOCATED LEACHATE PUMPING STATION
  - TRACTOR ROUTE
  - MOWER / AERATOR ROUTE

Printed by : 3/18/2019  
 Filename : G:\env\project\256383\13 Drawing Deliverables\report\002 EIA\Figure 5.1 - Locations of Representative Noise Assessment Points and Prevailing Noise Measurement Point.dgn



E	FIFTH ISSUE	GL	03/19
D	FOURTH ISSUE	GL	02/19
C	THIRD ISSUE	GL	12/18
B	SECOND ISSUE	GL	07/18
Rev	Description	By	Date

Consultant  
**ARUP**

Contract No. and Title  
**SHUEN WAN GOLF COURSE**

Drawing title  
**LOCATIONS OF REPRESENTATIVE NOISE ASSESSMENT POINTS AND PREVAILING NOISE MEASUREMENT POINT**

Drawing no. <b>FIGURE 5.1</b>		Rev. <b>E</b>
Drawn GL	Date 03/19	Checked EL
Scale 1:10000 @A3	Status PRELIMINARY	Approved FC

COPYRIGHT RESERVED  
**SHA LO TUNG DEVELOPMENT COMPANY LIMITED**

