

Legend

- River Water Quality Monitoring Station
- Project Boundary
- Study Area (500m)
- Fish Pond (Inactive)
- Water Sensitive Receiver**
- Old Kam Tin River
- Shan Pui River
- Yuen Long Town Nullah
- Wetland Conservation Area
- Wetland Buffer Area
- Mai Po Inner Deep Bay Ramsar Site
- Mangrove

Revision	Description			
	Designed	Reviewed	Drawn	Checked
Initial	-	-	-	-
Date	2/19	2/19	2/19	2/19

Approved

Agreement No. **CE 6/2010 (DS)**

Project Title
Improvement of Yuen Long Town Nullah (Town Centre Section) – Investigation

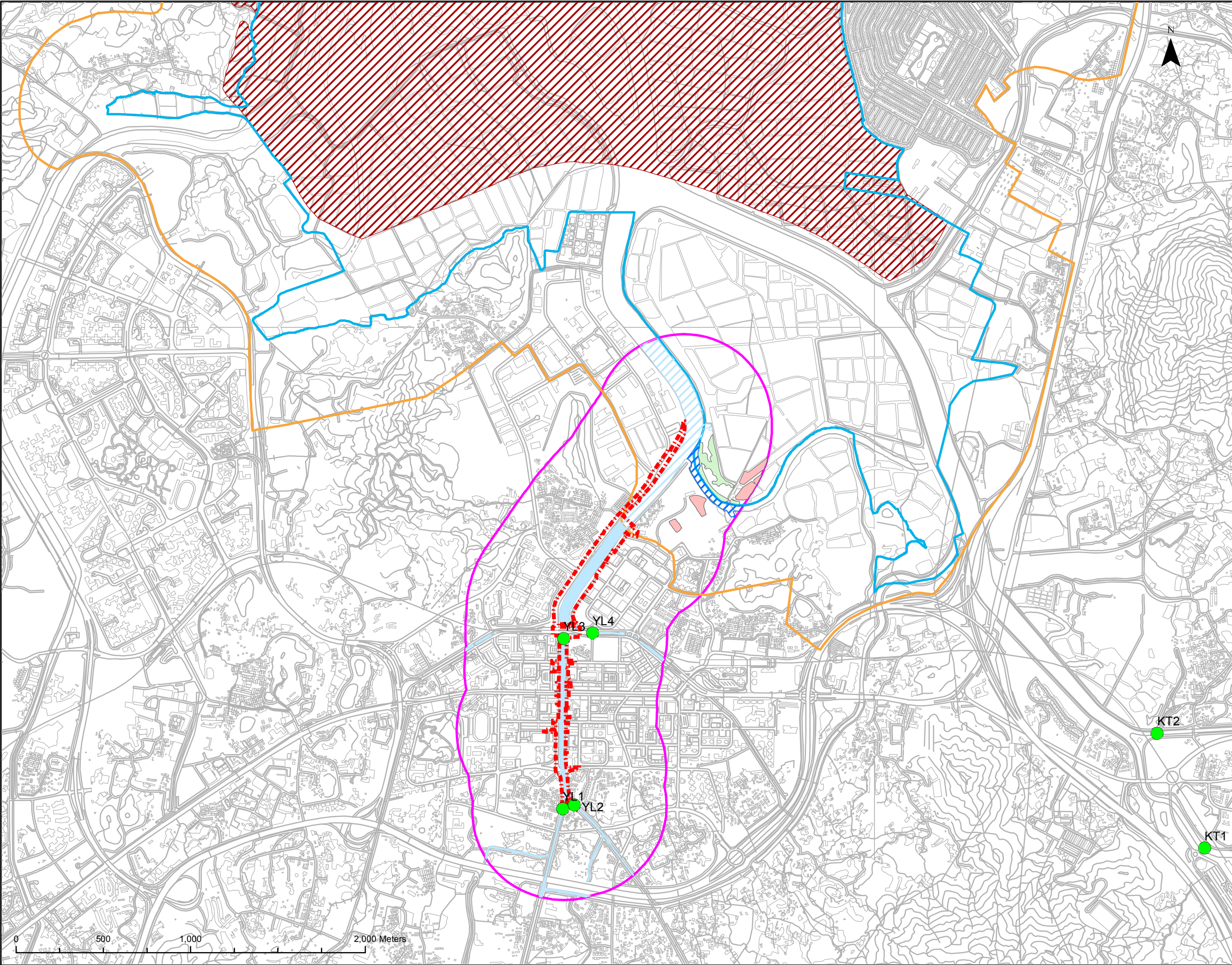
Figure Title
Water Quality Sensitive Receiver

Drawing No. **Figure 6.2** Revision **-**

Scale **A3: 1:20,000**

Client


Consultant

0 500 1,000 2,000 Meters