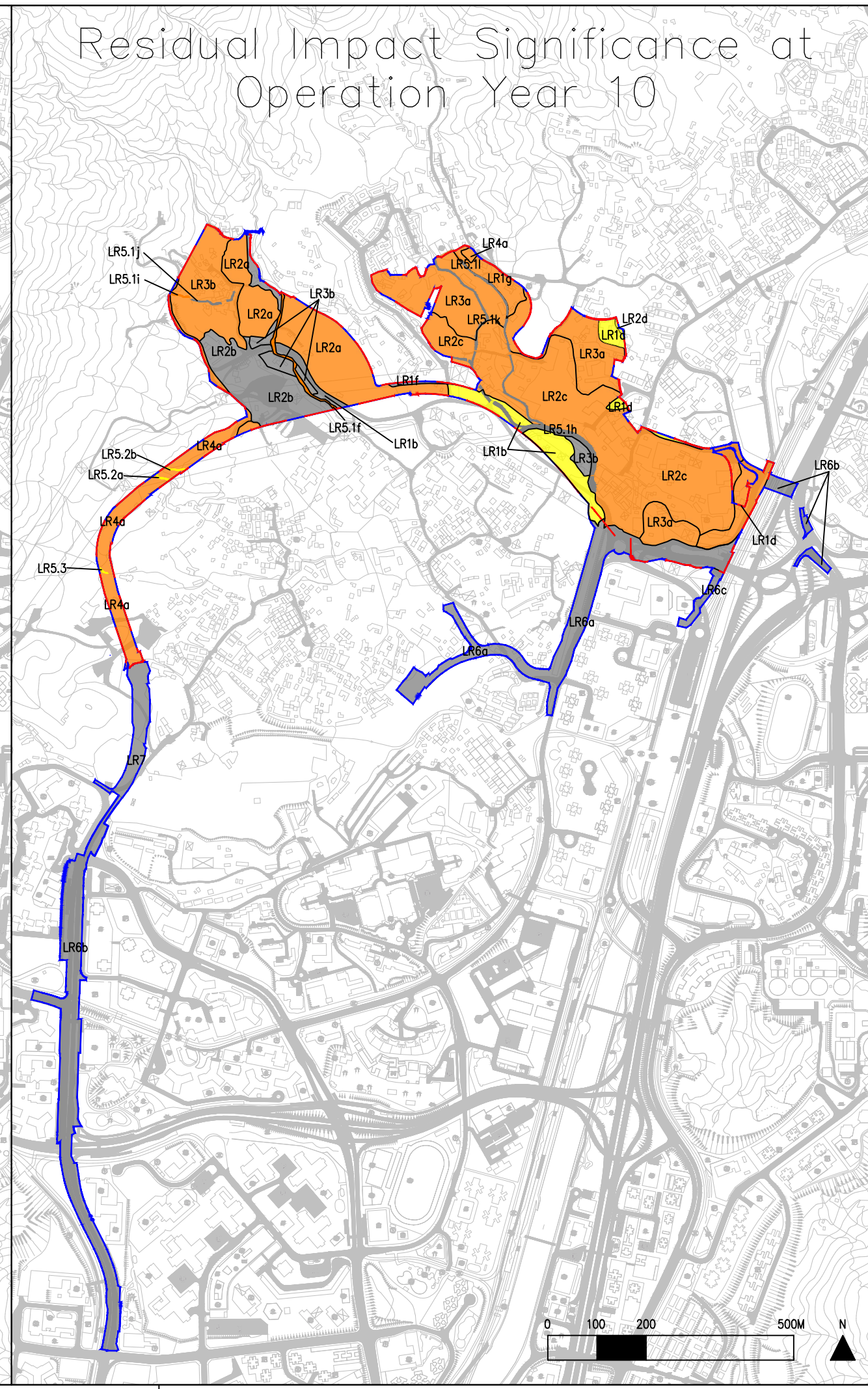
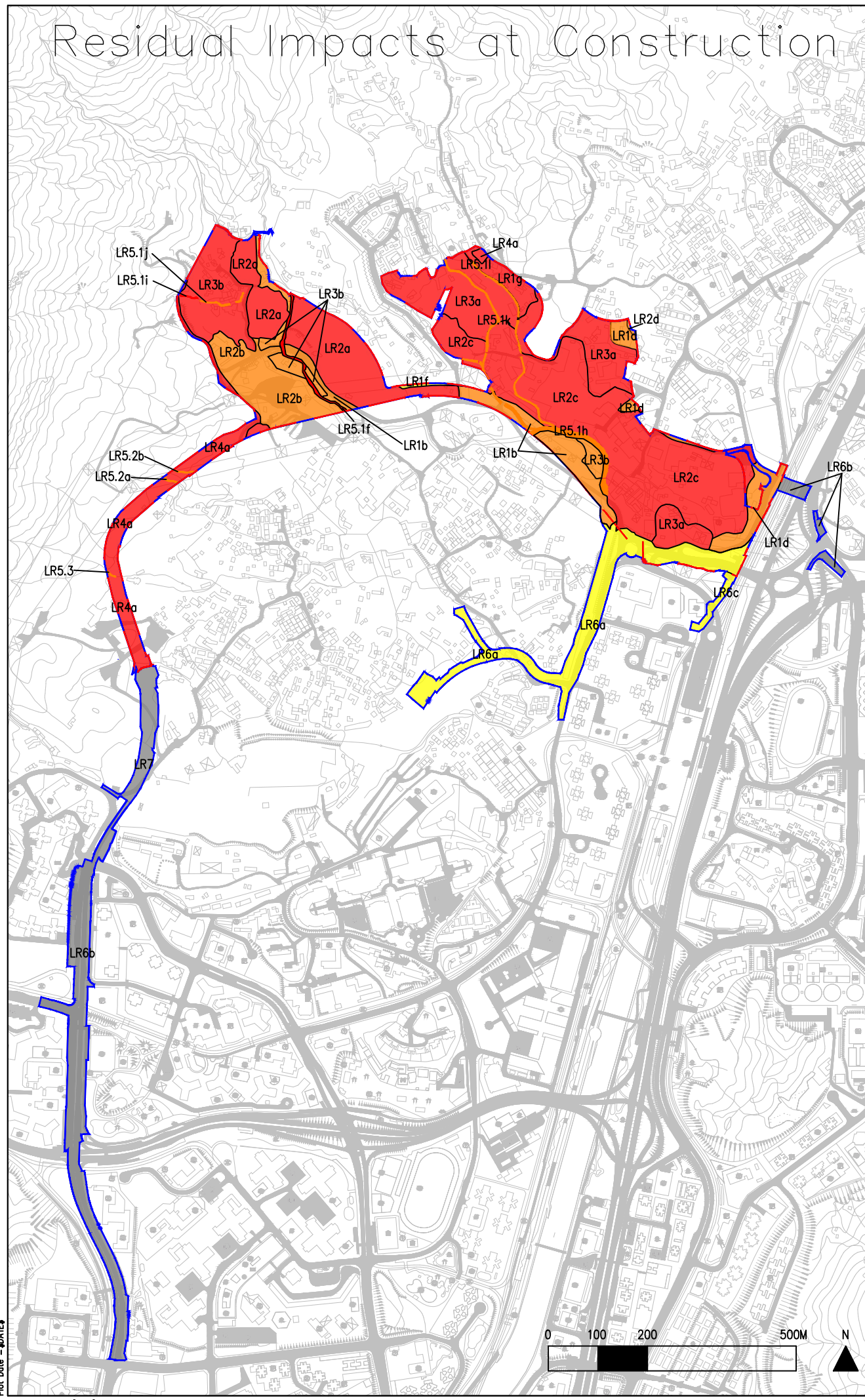


Residual Impacts at Construction

Residual Impact Significance at Operation Year 10



© Copyright by Black & Veatch Hong Kong Limited

Legend

- Proposed Development Area Boundary
- Project Site Boundary

Residual Landscape Impact

- Substantial
- Moderate
- Slight
- Insignificant

Landscape Resource Area

LR 1 – Village / Low-rise Residential Development
 1a – Siu Hang Tsuen
 1b – Tsz Tin Tsuen
 1c – Kai Lun Wai Village
 1d – San Hing Tsuen
 1e – Tuen Mun San Tsuen
 1f – Villa Pinada
 1g – Chung Shan Area

LR 2 – Open Storage / Workshop
 2a – HPR Container Terminal
 2b – HPR Workshops (Peripheral greening)
 2c – HPR Workshops (Some greening of open space)
 2d – San Hing Tsuen Open Storage
 2e – Tong Hong Road Open Storage
 2f – Kwong Shan Tsuen Open Area

LR 3 – Agricultural Land / Orchard
 3a – Actively Cultivated Land
 3b – Abandoned Land

LR 4 – Hillside Woodland
 4a – Mixed Woodland
 4b – Plantation Woodland
 4c – Mature Secondary Woodland

LR 5 – Watercourse
 Natural / Semi-natural Stream:
 5.1a – 5.1f, 5.1g, 5.1i, 5.2a – 5.2c, 5.3 & 5.4a – 5.4b
 Channelized Watercourse:
 5.1h, 5.1j – 5.1i & 5.5 – 5.7

LR 6 – Urban Area
 6a – Residential Blocks
 6b – Key Transport Route
 6c – Public Facilities
 6d – Industrial Blocks

LR 7 – Construction Site

LR 8 – Shrubland / Grassland Mosaic
 8a – West Grassland Mosaic
 8b – South West Grassland Mosaic

Revision	Date	Description	Initials
03	Design	Checked	Drawn
Initial	Gordon Li		Gordon Li
Date	29/06/2020		23/04/2020

Approved

Project title
 AGREEMENT NO. CEES/2017 (CE) SITE FORMATION AND INFRASTRUCTURAL WORKS FOR THE DEVELOPMENT AT SAN HING ROAD AND HONG PO ROAD, TUN MUN – FEASIBILITY STUDY

Drawing title
 LR Residual Impact Plan

Drawing No. Figure 10.25
 Scale 1:10000 (in A3)

土木工程拓展署
 CEDD Civil Engineering and Development Department

BLACK & VEATCH HONG KONG LIMITED
 博達工程顧問有限公司

Plot Date = \$DATE\$

CAD Filename = \$FILE\$