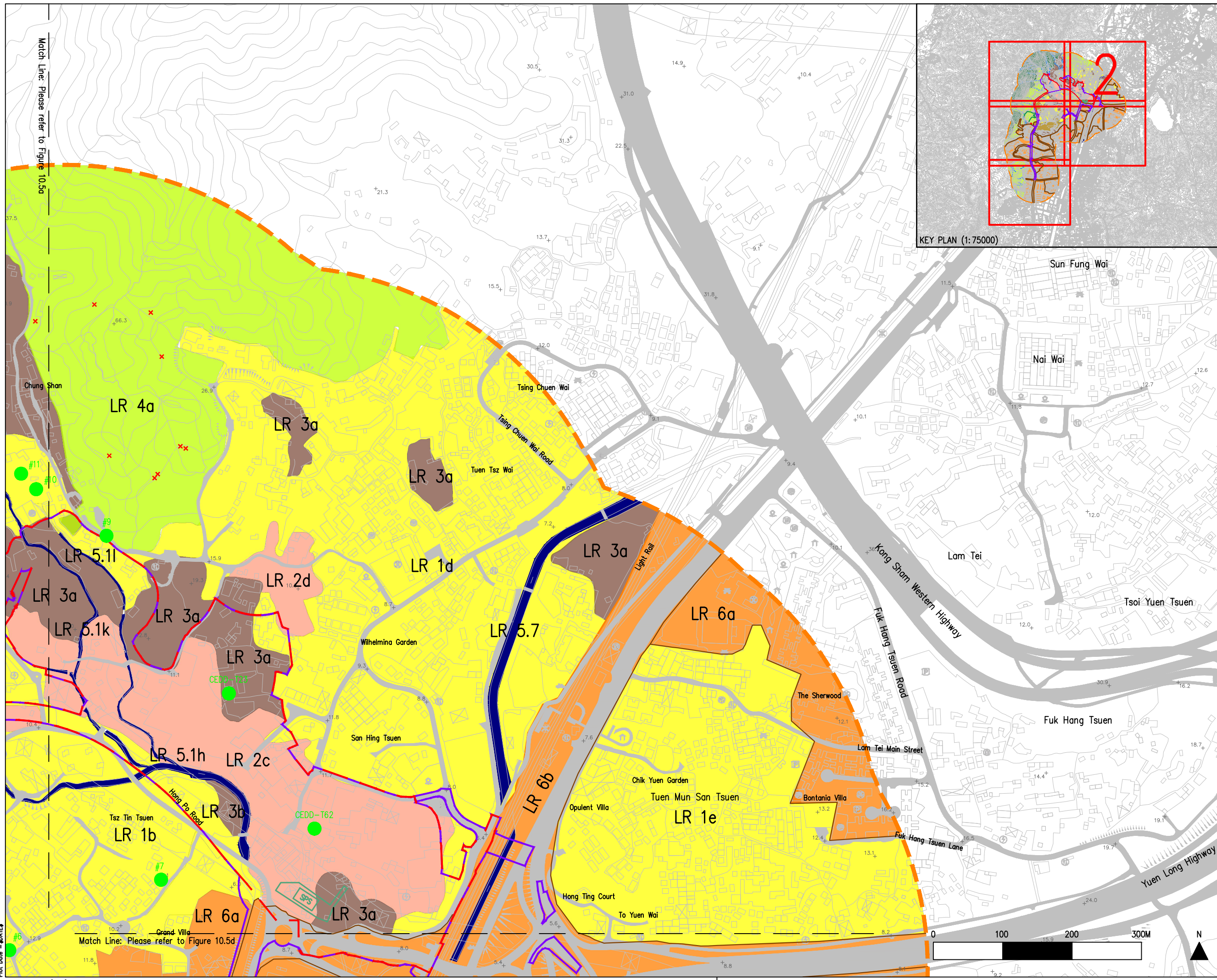
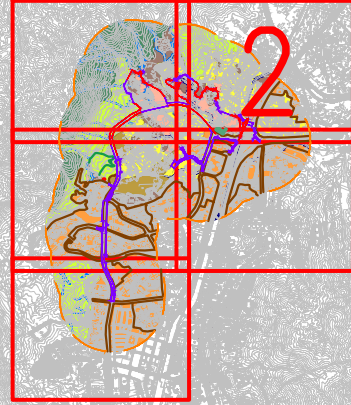


Legend

- Proposed Development Area Boundary
  - Project Site Boundary
  - 500m Assessment Area
- Landscape Resources**
- LR1 Villages/ Low-rise Residential Development
    - LR 1a Siu Hang Tsuen
    - LR 1b Tsz Tin Tsuen
    - LR 1c Kai Lun Wai Village
    - LR 1d San Hing Tsuen
    - LR 1e Tuen Mun San Tsuen
    - LR 1f Villa Pinada
    - LR 1g Chung Shan Area
  - LR2 Open Storage/ Workshop
    - LR 2a HPR Container Terminal
    - LR 2b HPR Workshops (Peripheral greening)
    - LR 2c HPR Workshops with Scattered Greening
    - LR 2d San Hing Tsuen Open Storage
    - LR 2e Tong Hang Road Open Storage
    - LR 2f Kwong Shan Tsuen Open Storage
  - LR3 Agricultural/ Orchard
    - LR3a Actively Cultivated Land
    - LR3b Abandoned Land
  - LR4 Hillside Woodland
    - LR 4a Mixed Woodland
    - LR 4b Plantation Woodland
    - LR 4c Mature Secondary Woodland
  - LR5 Watercourse
    - Natural/ Semi-natural Stream (LR5.1g - 5.1g, 5.1i, 5.1m, 5.2a - 5.2d, 5.3a, 5.3b, 5.4a - 5.4d & 5.8a - 5.8e)
    - Channelized Watercourse (LR5.1h, 5.1j - 5.1i & 5.5 - 5.7)
  - LR6 Urban Area
    - LR 6a Residential Blocks
    - LR 6b Key Transport Routes
    - LR 6c Public Facilities
    - LR 6d Industrial Blocks
  - LR7 Construction Site
  - LR8 Shrub-grassland Mosaic
    - LR 8a West Shrub-grassland Mosaic
    - LR 8b South-west Shrub-grassland Mosaic
- Trees of Particular Interest**
- Tree of Large Size & Tree Number
  - ✕ *Aquilaria sinensis*
  - ✕ *Nepenthes mirabilis*
  - ✕ *Camellia crampelliana*
  - ✕ *Diospyros vaccinioides*
  - ✕ *Geodorum densiflorum*
  - ✕ *Gleditsia australis*
  - ✕ *Pyrenaria spectabilis*
  - ✕ *Rhodoleia championii*

KEY PLAN (1:75000)



Revision	Date	Description	Initials
05	Design	Checked	Drawn
		Checked	Checked
Initial	Gordon Li		Gordon Li
Date	12/06/2020		15/05/2020

Project title  
 AGREEMENT NO. CEES/2017 (CE) SITE FORMATION AND INFRASTRUCTURAL WORKS FOR THE DEVELOPMENT AT SAN HING ROAD AND HONG PO ROAD, TUEN MUN - FEASIBILITY STUDY

Drawing title  
 Landscape Resources of the Proposed Assessment Area Boundary (Sheet 2 of 6)

Drawing No. Figure 10.5b  
 Scale 1:5000 (in A3)

土木工程拓展署  
 CEDD Civil Engineering and Development Department

BLACK & VEATCH HONG KONG LIMITED  
 博達工程顧問有限公司

Plot Date = \$DATE\$

CAD Filename = \$FILE\$

Match Line: Please refer to Figure 10.5a

Match Line: Please refer to Figure 10.5d

