



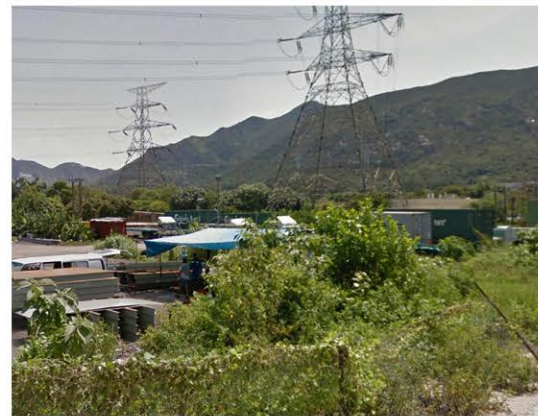
LR 1g Chung Shan Area
(low rise with greening)



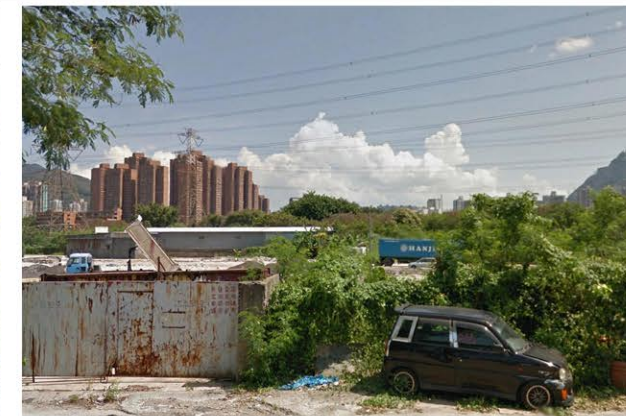
LR 2a - HPR Container Terminal



LR 2b - HPR Workshops
(with peripheral greening)



LR 2c - HPR Workshops (with some greening in open space)



LR 2d - San Hing Tsuen Open Storage



LR 2e - Tong Hang Road Open Storage



LR 2f - Kwong Shan Tsuen Open Area



LR 3a - Actively Cultivated Land



LR 3b - Abandoned Land

Revision	Date	Description			Initial
		Designed	Checked	Drawn	
Initial					
Date					
Approved					

Project Title
 AGREEMENT NO. CE88/2017 (CE) SITE FORMATION AND INFRASTRUCTURAL WORKS FOR THE DEVELOPMENT AT SAN HING ROAD AND HONG PO ROAD, TUN MUN - FEASIBILITY STUDY

Drawing Title
 PHOTOGRAPHIC RECORDS OF LANDSCAPE RESOURCES
 (Sheet 2 of 4)

Drawing No. Figure 10.7b	Scale
-----------------------------	-------

土木工程拓展署
 CEDD Civil Engineering and Development Department

BLACK & VEATCH HONG KONG LIMITED
 博盛工程顧問有限公司