





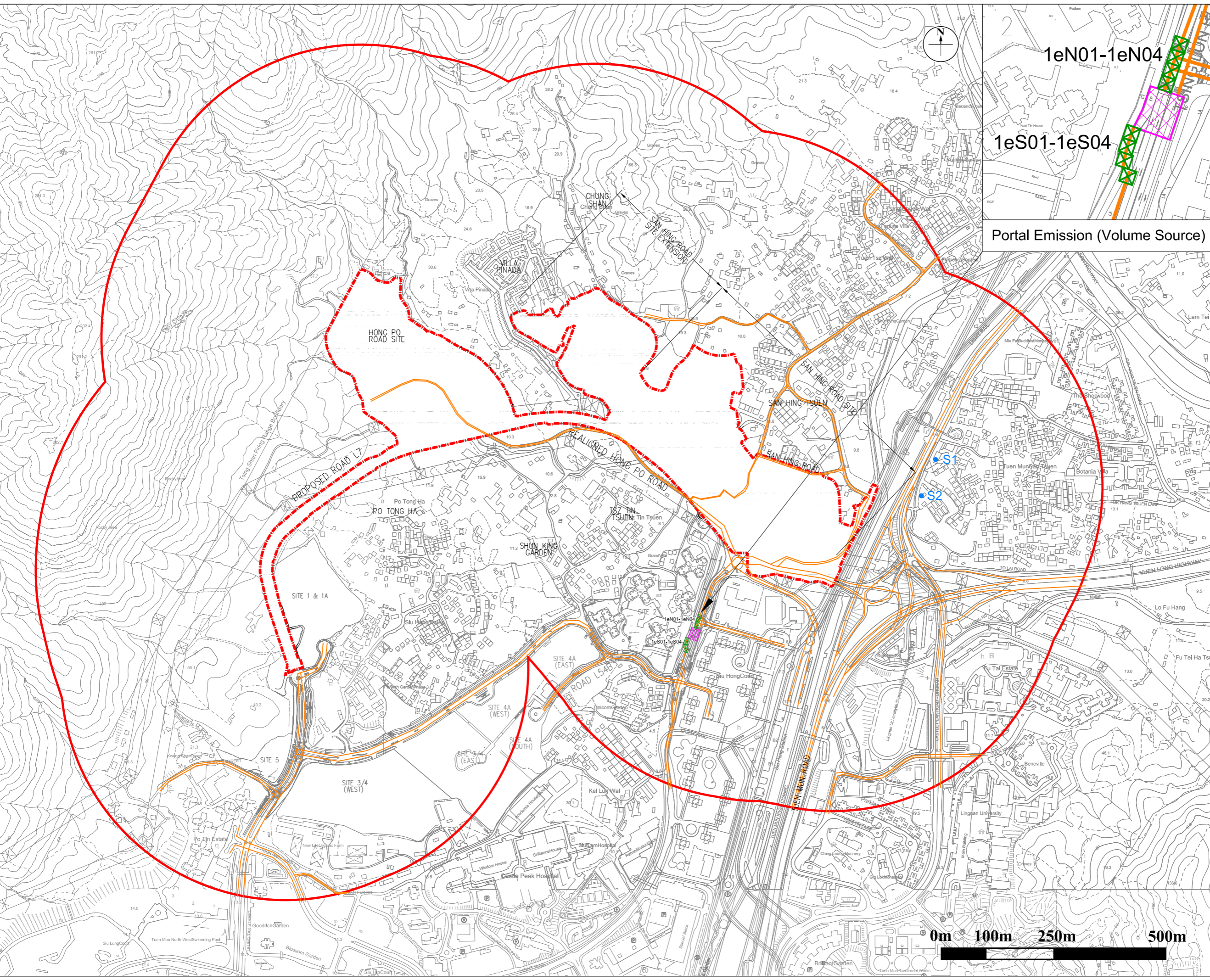


- LEGEND:
-  PROPOSED DEVELOPMENT AREA BOUNDARY
 -  ASSESSMENT AREA FOR AIR QUALITY (500m)
 -  EXISTING FULL ENCLOSURE
 -  OPEN ROADS
 -  PORTAL EMISSION (VOLUME SOURCE)
 -  CHIMNEYS



Portal Emission (Volume Source)

Revision	Date	Description			Initial
		Designed	Checked	Drawn	
Initial				KL	KY
Date				09/20	09/20

Approved

Project title
 AGREEMENT NO. CE68/2017 (CE)
 SITE FORMATION AND
 INFRASTRUCTURAL WORKS FOR THE
 DEVELOPMENT AT SAN HING ROAD
 AND HONG PO ROAD, TUEN MUN -
 FEASIBILITY STUDY

Drawing title
 LOCATIONS OF OPEN ROADS, PORTAL EMISSION
 AND INDUSTRIAL EMISSION SOURCES
 (CONSTRUCTION PHASE 1-7)

Drawing No. Scale
 FIGURE 4.14

