






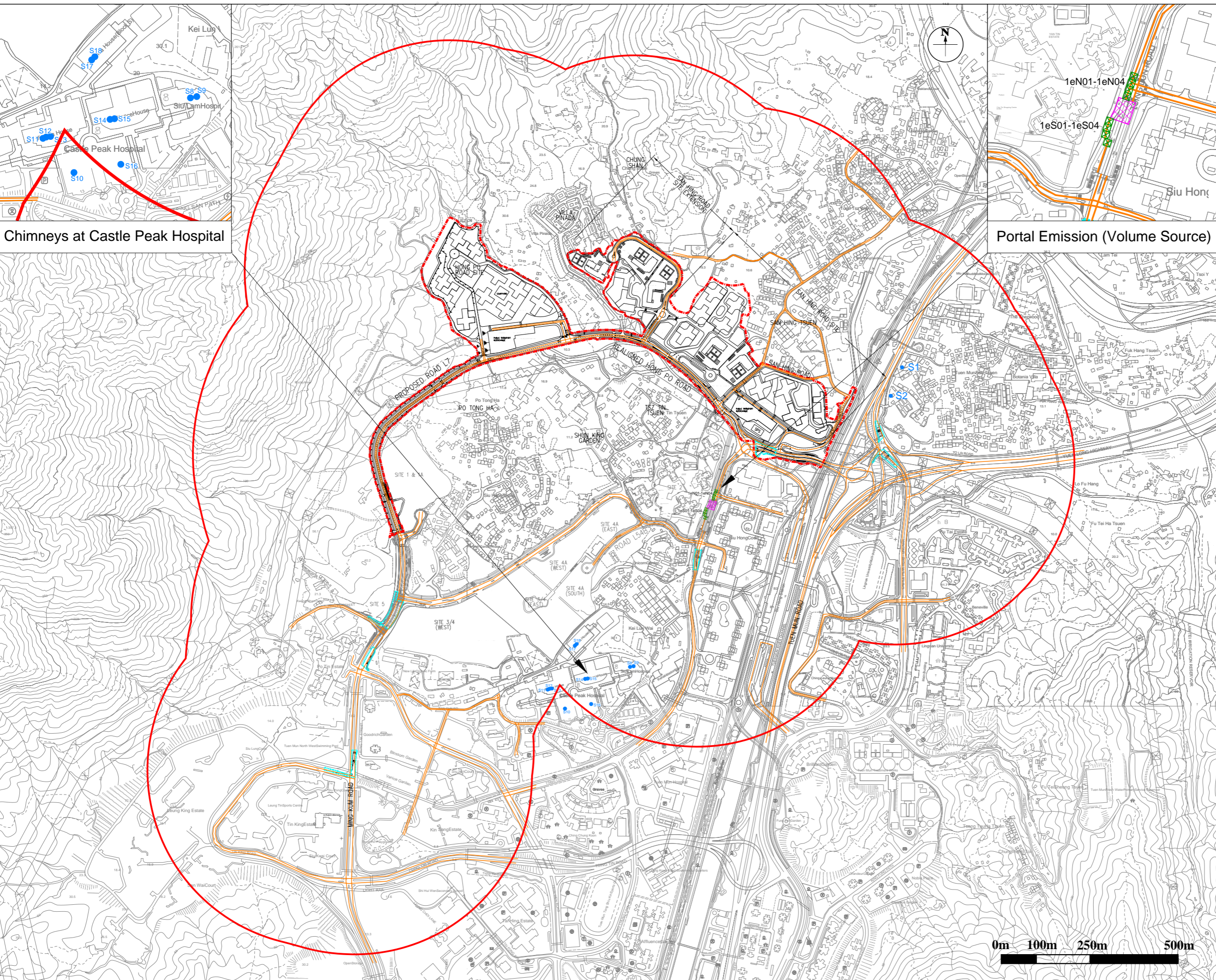


- LEGEND:
-  PROPOSED DEVELOPMENT AREA BOUNDARY
 -  JUNCTION IMPROVEMENT WORKS BOUNDARY
 -  ASSESSMENT AREA FOR AIR QUALITY (500m)
 -  EXISTING FULL ENCLOSURE
 -  OPEN ROADS
 -  PORTAL EMISSION (VOLUME SOURCE)
 -  CHIMNEYS



NOTE:
THE LAYOUT IS FOR EIA PURPOSE AND SUBJECT TO
REVIEW AND CHANGE.

Revision	Date		Description		Initial	
	Designed	Checked	Drawn	Checked		
Initial			KL			KY
Date			09/20			09/20
Approved						

Project title
AGREEMENT NO. CE68/2017 (CE)
SITE FORMATION AND
INFRASTRUCTURAL WORKS FOR THE
DEVELOPMENT AT SAN HING ROAD
AND HONG PO ROAD, TUN MUN -
FEASIBILITY STUDY

Drawing title
LOCATIONS OF OPEN ROADS, PORTAL EMISSION
AND INDUSTRIAL EMISSION SOURCES
(OPERATION PHASE)

Drawing No. Scale

FIGURE 4.17

