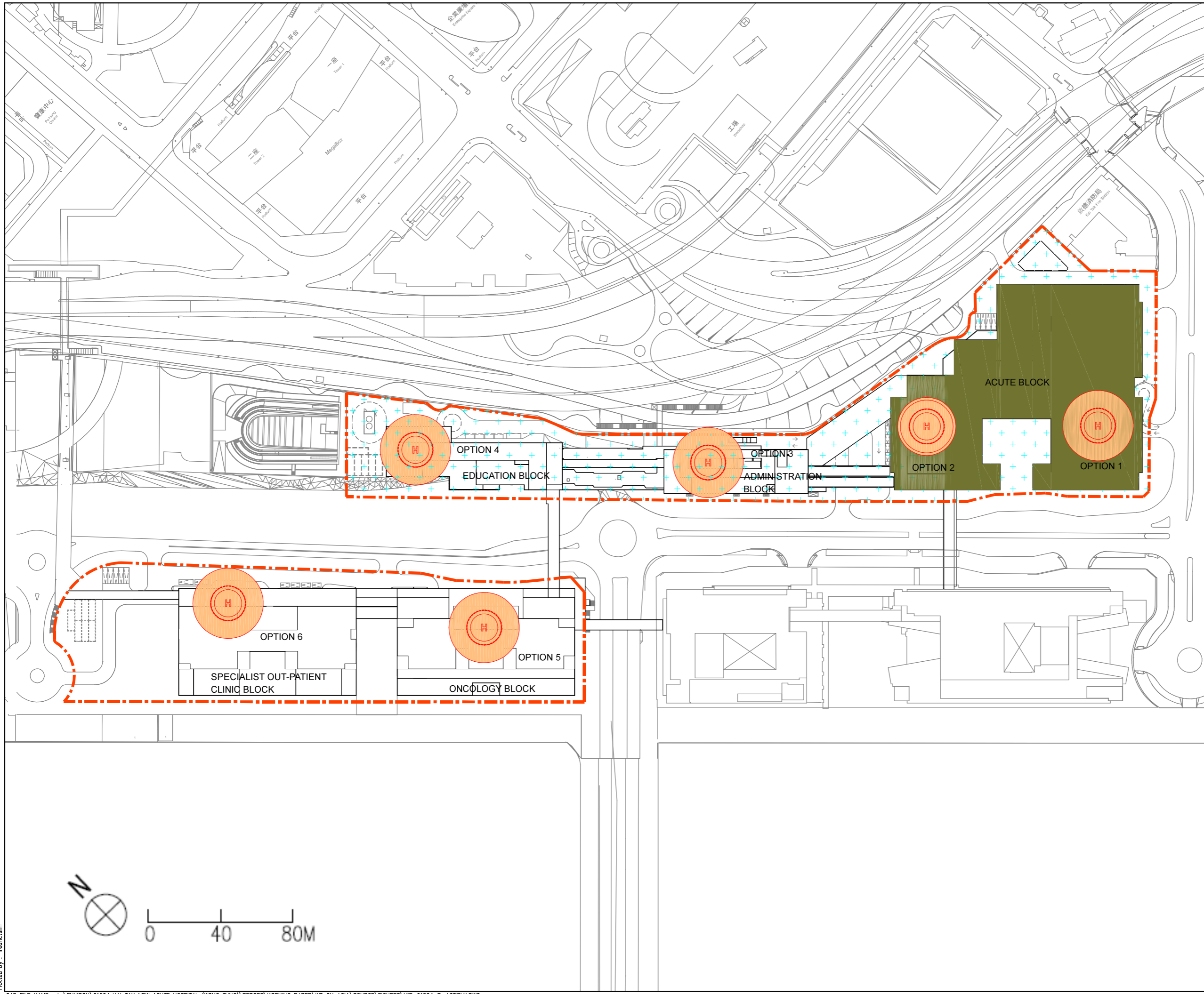


Plot Style : L:\ENVIRON\91524 Kai Tak New Acute Hospital (Wong Tung)\Report\Working Paper\WP ON AQIA\SOURCE\FIGURES\MIE-91524-COLOR-A3.ctb
 Plot Date & Time : May 9, 2019 2:04 PM
 Plotted by : fredricism



LEGEND :

- - - BOUNDARY LINE OF NEW ACUTE HOSPITAL AT KAI TAK DEVELOPMENT AREA
- H DEVELOPMENT OPTIONS OF HELIPAD
- ACUTE BLOCK

Rev	Amendment	By	Chk.	App.	Date

Client



醫院管理局
HOSPITAL AUTHORITY

Architect

WONG TUNG & PARTNERS LIMITED
ARCHITECTS & PLANNERS



18th Floor, Cityplaza 3, Taikoo Shing, Hong Kong
T 852-2803 9808 F 852-2513 1728 www.wongtung.com

MEINHARDT
Meinhardt Infrastructure and Environment Limited
邁達基達環保工程顧問有限公司

Project

A ROOFTOP HELIPAD AT
NEW ACUTE HOSPITAL AT
KAI TAK DEVELOPMENT AREA

Title

OPTIONS FOR HELIPAD LOCATION
IN THE NAH

Status

Drawn	CAD	Checked	-	Approved	-
Scale	AS SHOWN (A3)	CAD File Name	First Issued	MAY 2019	
Copyright Reserved 版權所有 不得翻印	Drawing No.	FIGURE 2.2			Rev.
					-