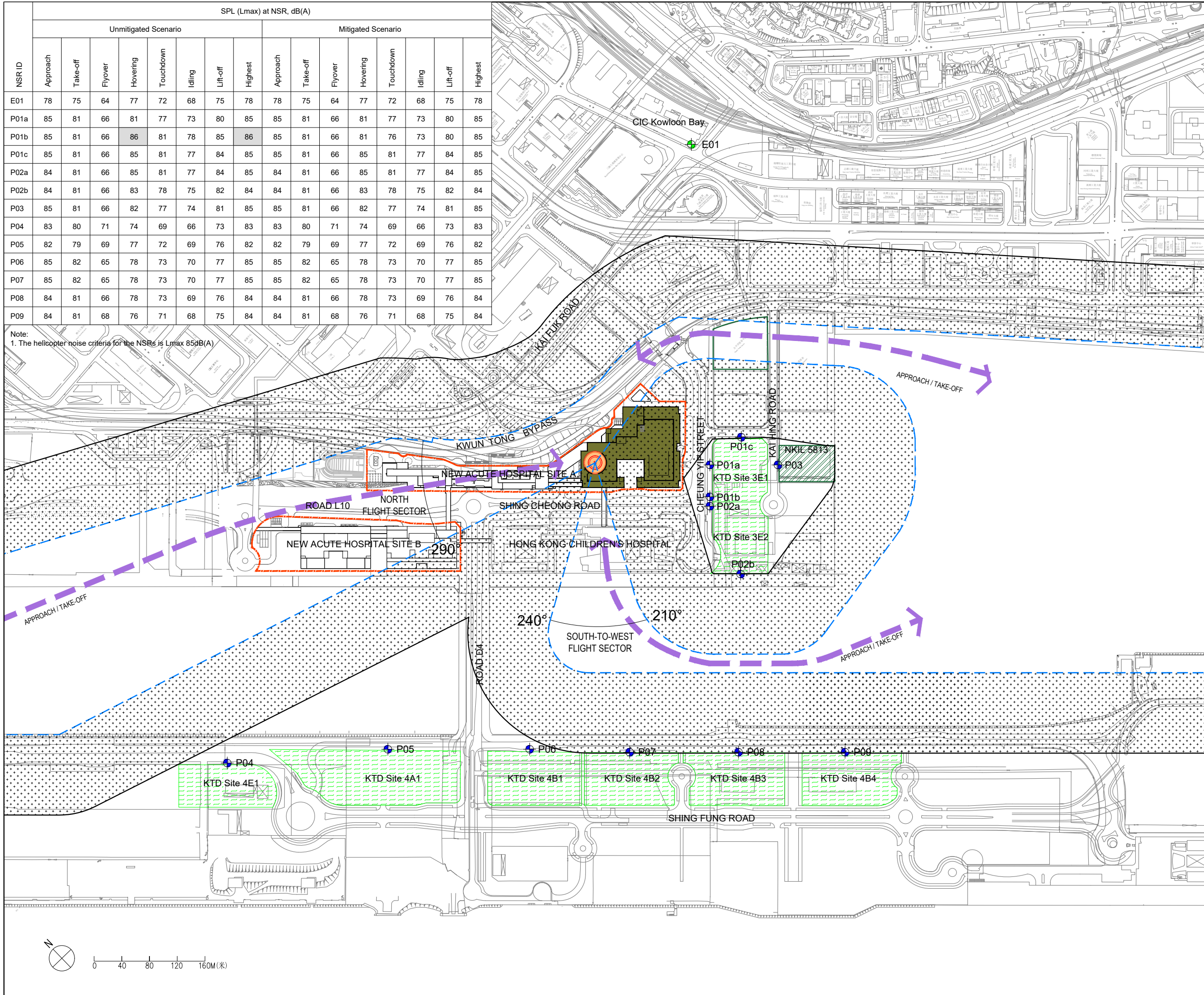


| NSR ID | SPL (Lmax) at NSR, dB(A) |          |         |          |           |        |          |         |                    |          |         |          |           |        |          |         |
|--------|--------------------------|----------|---------|----------|-----------|--------|----------|---------|--------------------|----------|---------|----------|-----------|--------|----------|---------|
|        | Unmitigated Scenario     |          |         |          |           |        |          |         | Mitigated Scenario |          |         |          |           |        |          |         |
|        | Approach                 | Take-off | Flyover | Hovering | Touchdown | Idling | Lift-off | Highest | Approach           | Take-off | Flyover | Hovering | Touchdown | Idling | Lift-off | Highest |
| E01    | 78                       | 75       | 64      | 77       | 72        | 68     | 75       | 78      | 78                 | 75       | 64      | 77       | 72        | 68     | 75       | 78      |
| P01a   | 85                       | 81       | 66      | 81       | 77        | 73     | 80       | 85      | 85                 | 81       | 66      | 81       | 77        | 73     | 80       | 85      |
| P01b   | 85                       | 81       | 66      | 86       | 81        | 78     | 85       | 86      | 85                 | 81       | 66      | 81       | 76        | 73     | 80       | 85      |
| P01c   | 85                       | 81       | 66      | 85       | 81        | 77     | 84       | 85      | 85                 | 81       | 66      | 85       | 81        | 77     | 84       | 85      |
| P02a   | 84                       | 81       | 66      | 85       | 81        | 77     | 84       | 85      | 84                 | 81       | 66      | 85       | 81        | 77     | 84       | 85      |
| P02b   | 84                       | 81       | 66      | 83       | 78        | 75     | 82       | 84      | 84                 | 81       | 66      | 83       | 78        | 75     | 82       | 84      |
| P03    | 85                       | 81       | 66      | 82       | 77        | 74     | 81       | 85      | 85                 | 81       | 66      | 82       | 77        | 74     | 81       | 85      |
| P04    | 83                       | 80       | 71      | 74       | 69        | 66     | 73       | 83      | 83                 | 80       | 71      | 74       | 69        | 66     | 73       | 83      |
| P05    | 82                       | 79       | 69      | 77       | 72        | 69     | 76       | 82      | 82                 | 79       | 69      | 77       | 72        | 69     | 76       | 82      |
| P06    | 85                       | 82       | 65      | 78       | 73        | 70     | 77       | 85      | 85                 | 82       | 65      | 78       | 73        | 70     | 77       | 85      |
| P07    | 85                       | 82       | 65      | 78       | 73        | 70     | 77       | 85      | 85                 | 82       | 65      | 78       | 73        | 70     | 77       | 85      |
| P08    | 84                       | 81       | 66      | 78       | 73        | 69     | 76       | 84      | 84                 | 81       | 66      | 78       | 73        | 69     | 76       | 84      |
| P09    | 84                       | 81       | 68      | 76       | 71        | 68     | 75       | 84      | 84                 | 81       | 68      | 76       | 71        | 68     | 75       | 84      |

Note:  
1. The helicopter noise criteria for the NSRs is Lmax 85dB(A)



- LEGEND :
- BOUNDARY LINE OF NEW ACUTE HOSPITAL AT KAI TAK DEVELOPMENT AREA
  - PROPOSED ROOFTOP HELIPAD
  - ACUTE BLOCK
  - RESIDENTIAL (LAND USES ACCORDING TO THE APPROVED KAI TAK OUTLINE ZONING PLAN)
  - COMMERCIAL (LAND USES ACCORDING TO THE APPROVED KAI TAK OUTLINE ZONING PLAN)
  - EXISTING NOISE SENSITIVE RECEIVERS
  - PLANNED NOISE SENSITIVE RECEIVERS
  - INDICATIVE FLIGHT PATH
  - APPROACH / TAKE-OFF ZONE
  - NOISE BUFFER ZONE FOR FLIGHT PATH (16m BUFFER DISTANCE)

|     |           |    |      |      |      |
|-----|-----------|----|------|------|------|
| Rev | Amendment | By | Chk. | App. | Date |
|-----|-----------|----|------|------|------|

Client

Architect  
**WONG TUNG & PARTNERS LIMITED**  
 ARCHITECTS & PLANNERS  
  
 18th Floor, Cityplaza 3, Taikoo Shing, Hong Kong  
 T 852-2808 9808 F 852-2513 1728 www.wongtung.com

Project  
**MEINHARDT**  
 Meinhardt Infrastructure and Environment Limited  
 邁達基達環境工程顧問有限公司

Title  
 A ROOFTOP HELIPAD AT NEW ACUTE HOSPITAL AT KAI TAK DEVELOPMENT AREA

Title  
 NOISE BUFFER ZONE FOR FLIGHT PATH

|                    |               |               |   |              |          |
|--------------------|---------------|---------------|---|--------------|----------|
| Drawn              | CAD           | Checked       | - | Approved     | -        |
| Scale              | AS SHOWN (A3) | CAD File Name |   | First Issued | MAY 2019 |
| Copyright Reserved |               | Drawing No.   |   | Rev.         |          |

FIGURE 5.4a