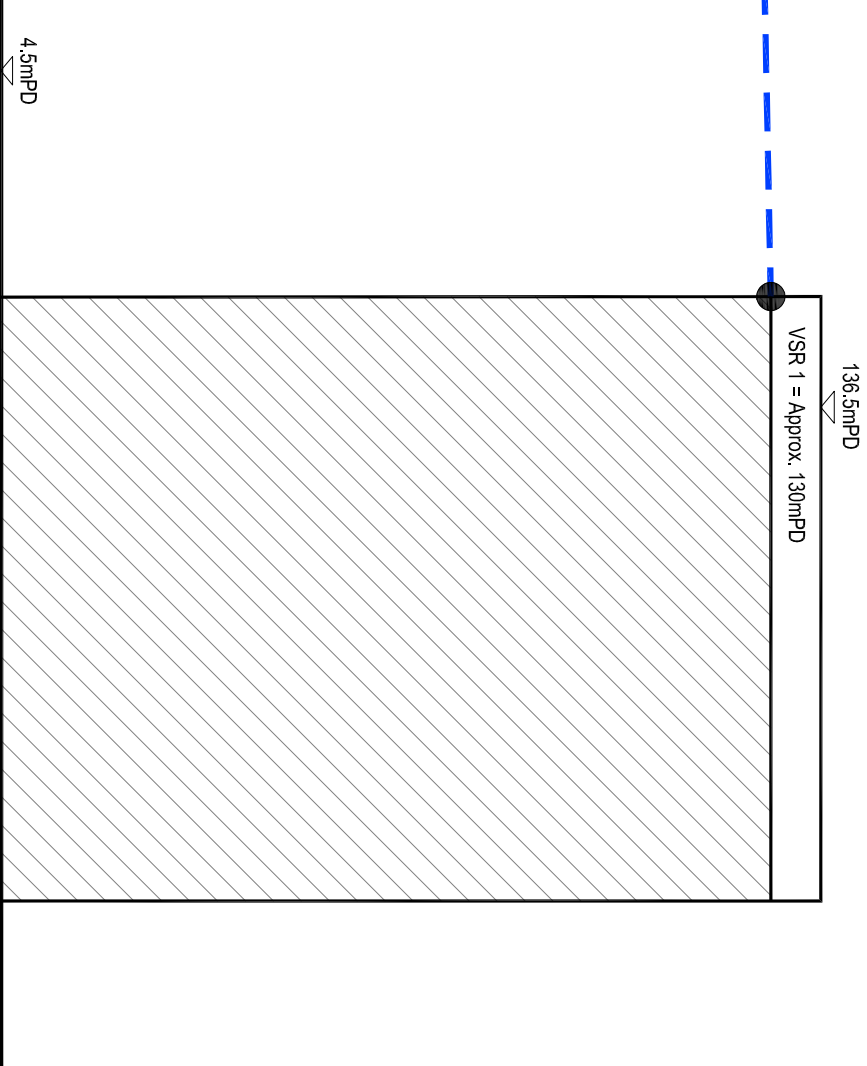
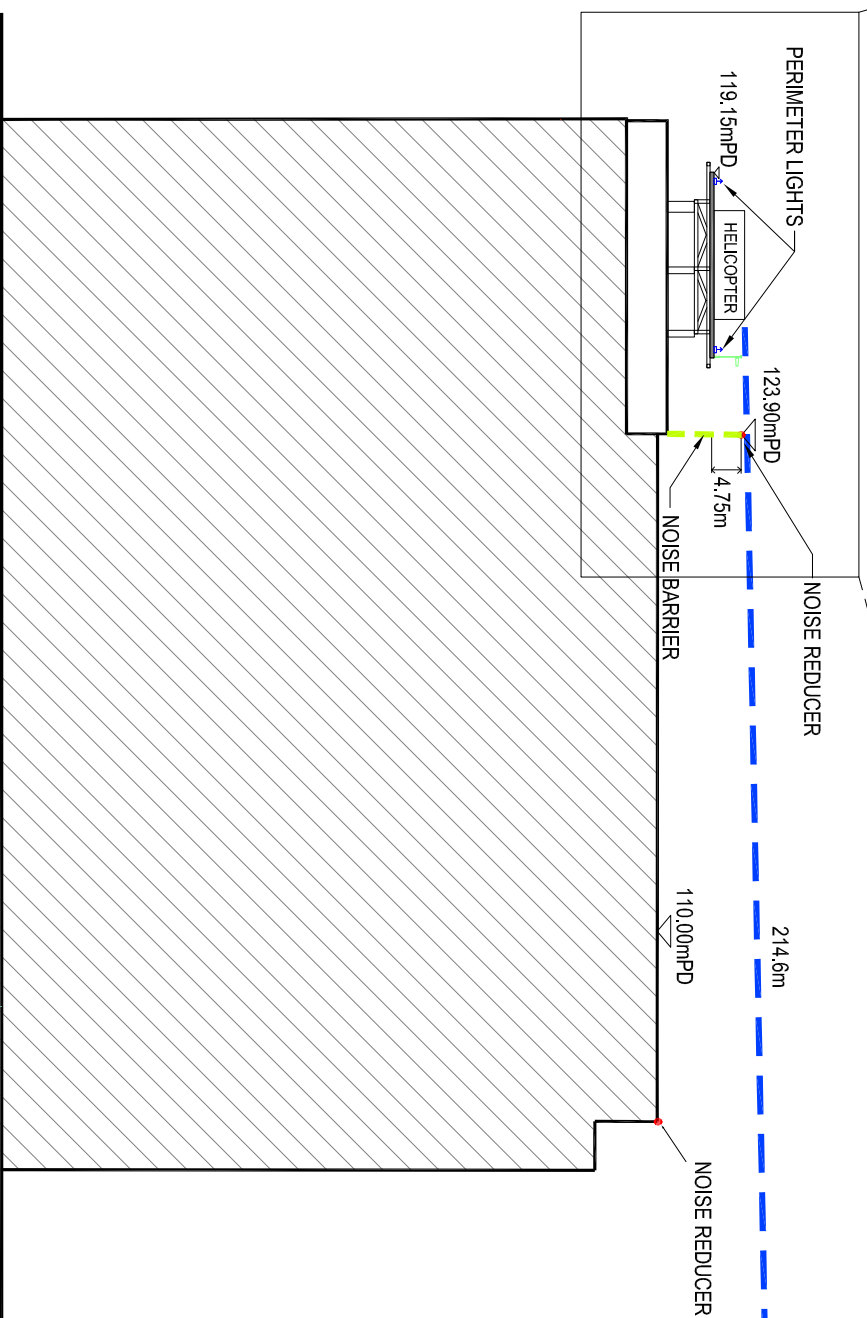
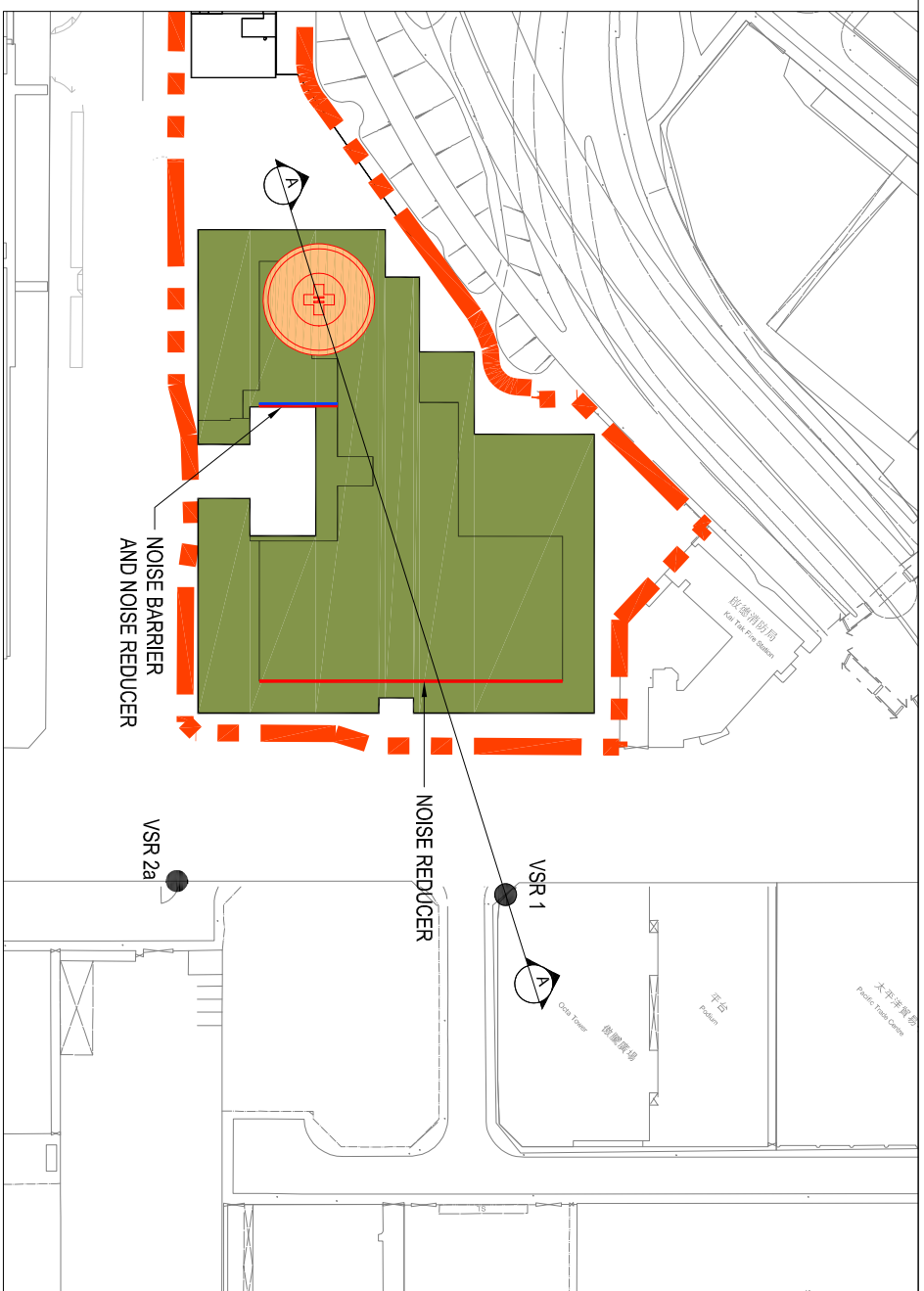
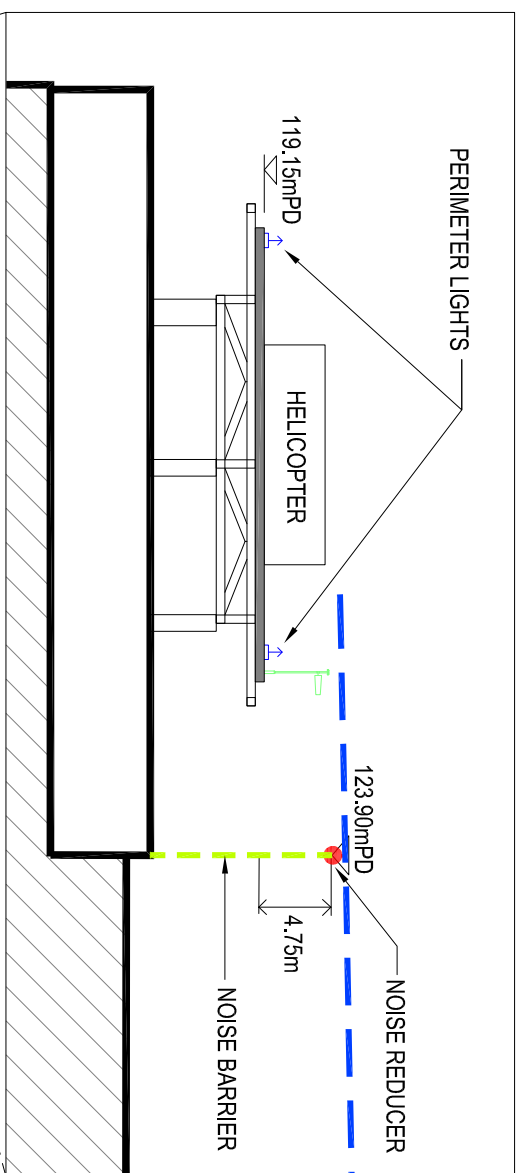






Cross Section Plan A



LEGENDS:

-  BOUNDARY LINE OF NEW ACUTE HOSPITAL AT KAI TAK DEVELOPMENT AREA
-  PROPOSED ROOFTOP HELIPAD
-  VSR VISUAL SENSITIVE RECEIVERS
-  LINE OF SIGHT

Rev	Amendment	By	Crk.	App.	Date

Client



醫院管理局
HOSPITAL
AUTHORITY

WONG TUNG & PARTNERS LIMITED
ARCHITECTS & PLANNERS

18th Floor, Cityplaza 3, Tai Koo Shing, Hong Kong
T 852-2803 8888 F 852-2513 1728 www.wongtung.com

MEIN-YARDT
Meinhardt Infrastructure and Environment Limited
邁達德建築環境工程顧問有限公司

Project
A ROOFTOP HELIPAD AT
NEW ACUTE HOSPITAL AT
KAI TAK DEVELOPMENT AREA

Title
Cross Section Drawing for
Visual Impact Assessment of
VSR 1

Status	Checked	Approved
Drawn CAD		
Scale AS SHOWN (A3)	CAD File Name	First Issued

Copyright Reserved
版權所有 不得翻印

Drawing No. FIGURE 7.3D

Rev. Mar 2020

Acute Block of NAH

Cheung Yip Street

Onda Tower