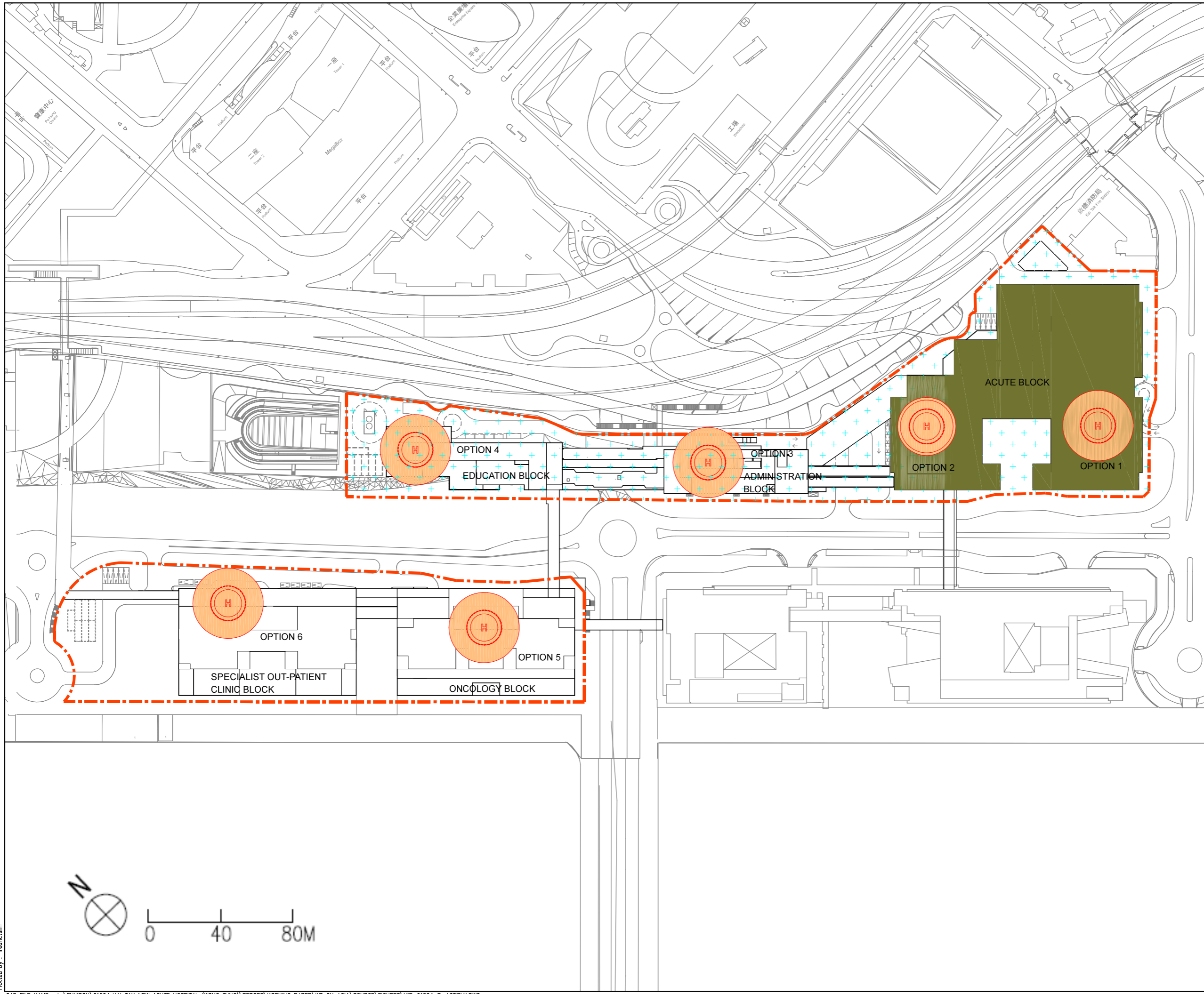


Plot Size : L:\ENVIRON\91524 Kai Tak New Acute Hospital (Wong Tung)\Report\Working Paper\WP ON AQIA\SOURCE\FIGURES\MIE-91524-COLOR-A3.ctb  
 Plot Date & Time : May 9, 2019 2:04 PM  
 Plotted by : fredricism



- LEGEND :
- BOUNDARY LINE OF NEW ACUTE HOSPITAL AT KAI TAK DEVELOPMENT AREA
  - H DEVELOPMENT OPTIONS OF HELIPAD
  - ACUTE BLOCK

Rev	Amendment	By	Chk.	App.	Date

Client  
 醫院管理局  
 HOSPITAL AUTHORITY

Architect  
**WONG TUNG & PARTNERS LIMITED**  
 ARCHITECTS & PLANNERS  
  
 18th Floor, Cityplaza 3, Taikoo Shing, Hong Kong  
 T 852-2803 9808 F 852-2513 1728 www.wongtung.com

**MEINHARDT**  
 Meinhardt Infrastructure and Environment Limited  
 邁進基礎環境工程顧問有限公司

Project  
 A ROOFTOP HELIPAD AT  
 NEW ACUTE HOSPITAL AT  
 KAI TAK DEVELOPMENT AREA

Title  
 OPTIONS FOR HELIPAD LOCATION  
 IN THE NAH

Status			
Drawn	CAD	Checked	-
Scale	AS SHOWN (A3)	CAD File Name	First Issued
			MAY 2019
		Drawing No.	Rev.

Copyright Reserved  
 版權所有 不得翻印  
**FIGURE 3.1**