

B.D. REF:
F.S.D. REF:

KEY PLAN

LEGEND:

- ASSESSMENT AREA
- 301 LOCATION AND DIRECTION OF PHOTOGRAPH TAKEN / PHOTO ID
- PROPOSED ROAD ALIGNMENT

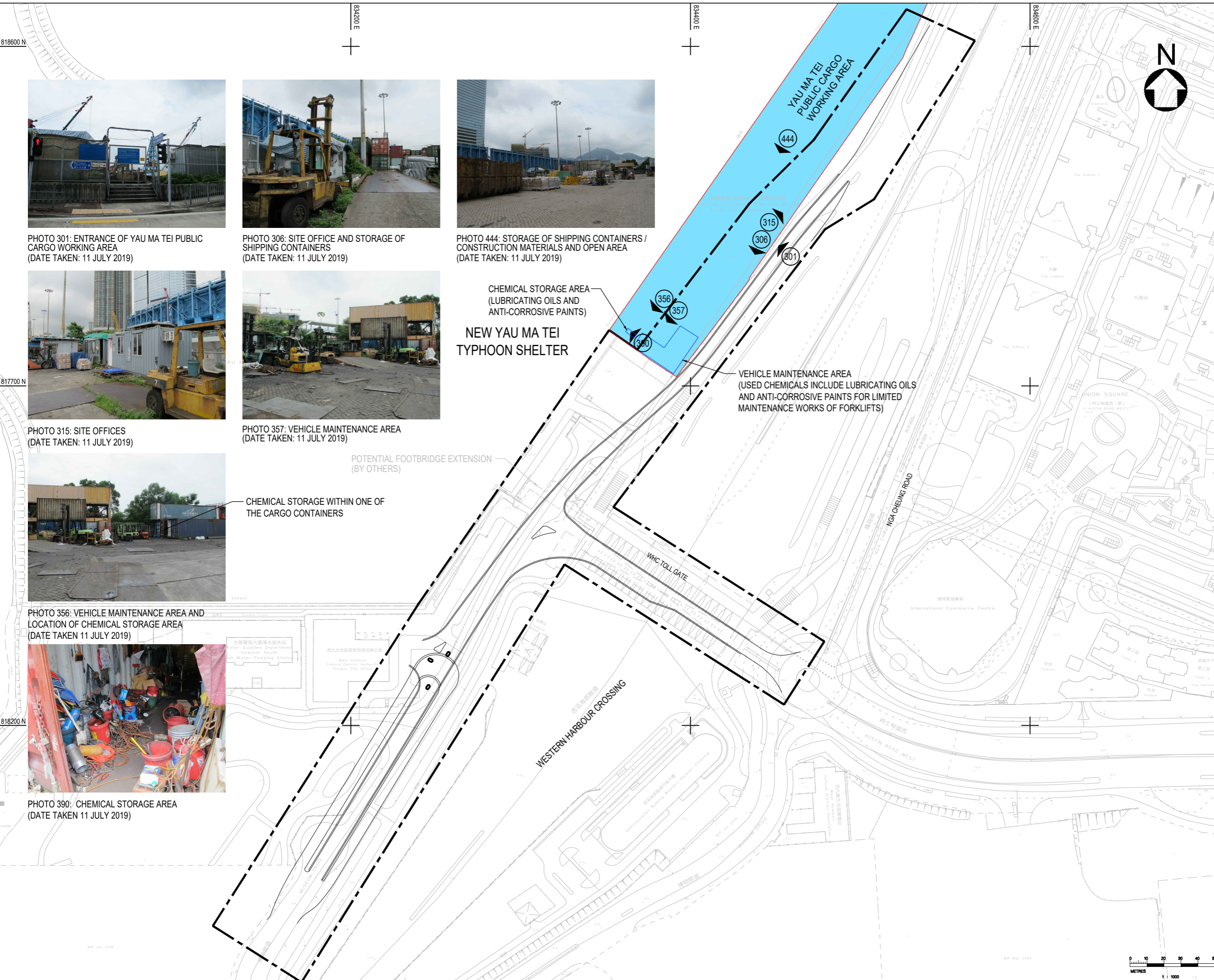


PHOTO 301: ENTRANCE OF YAU MA TEI PUBLIC CARGO WORKING AREA (DATE TAKEN: 11 JULY 2019)

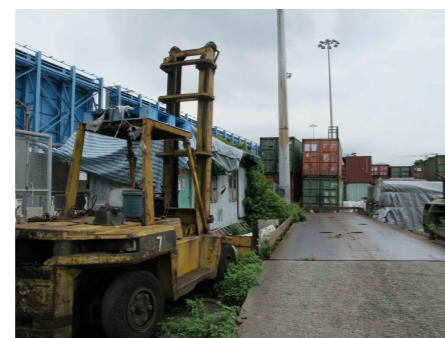


PHOTO 306: SITE OFFICE AND STORAGE OF SHIPPING CONTAINERS (DATE TAKEN: 11 JULY 2019)



PHOTO 444: STORAGE OF SHIPPING CONTAINERS / CONSTRUCTION MATERIALS AND OPEN AREA (DATE TAKEN: 11 JULY 2019)



PHOTO 315: SITE OFFICES (DATE TAKEN: 11 JULY 2019)



PHOTO 357: VEHICLE MAINTENANCE AREA (DATE TAKEN: 11 JULY 2019)



PHOTO 356: VEHICLE MAINTENANCE AREA AND LOCATION OF CHEMICAL STORAGE AREA (DATE TAKEN 11 JULY 2019)

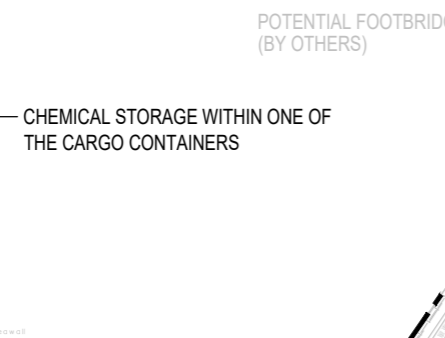


PHOTO 390: CHEMICAL STORAGE AREA (DATE TAKEN 11 JULY 2019)

REV.	DATE	DESCRIPTION	INITIAL

JOB TITLE
REVISED AUSTIN ROAD FLYOVER

DRAWING TITLE
FIGURE 7.3 PHOTOGRAPHIC RECORDS FOR SITE WALKOVER (SHEET 2 OF 2)

SCALE 1:1000 PRINTED A1

CHECKED - DATE -

APPROVED - DATE -

DRAWN - DATE -

CONTRACT NO.

DRAWING NO.
04XXX-AEC-CIV-DWG-0722-R35-XXXX-WS1

CAD REF NAME: 04XXX-AEC-CIV-DWG-0722-R35-XXXX-WS1-XA.DWG

THE AUTHORITY

westKowloon
西九文化區

Z:\12\PROJECTS\9288\DRAWING\REPORT\9288\AEC-CIV-DWG-0722-R35-XXXX-WS1-XA.dwg 2017/02/20