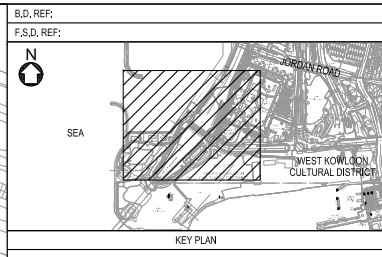


***Appendix 8.1 – Broad Brush Tree Survey
Findings and Tree Group Schedule***

Drawing No.	Tree Group No.	Botanical Name	Chinese Common Name	SIZE (M)			App. Quantity of the group	Structural condition (Good/ Fair/ Poor)	Form (Good/ Fair/ Poor)	Health (Good/ Fair/ Poor)	Amenity Value (Good/ Fair/ Poor)	Suitability for Transplanting		Conservation Status	Recommendation (Retain/ Remove)		Justification	Additional Remarks
				Height	Trunk DBH	Spread						(High/ Medium/ Low)	Remarks		Retain	Remove		
04XXX-AEC-CIV-DWG-0816-R35-XXXX-WS1	G01	<i>Celtis sinensis</i>	朴樹	4-6	0.095-0.22	4-5	2	Fair	Poor	Fair	Fair	Low	b,c,f	NIL	9	0	NIL	NIL
		<i>Crateva religiosa</i>	魚木	7	0.250	6	1	Fair	Fair	Fair	Fair	Low	b,c,d	NIL				
		<i>Peltophorum pterocarpum</i>	雙翼豆	10-11	0.300	3-5	3	Fair	Poor	Fair	Fair	Low	b,c,d,f	NIL				
		<i>Syzygium cumini</i>	海南蒲桃	9-11	0.2-0.3	2-5	3	Fair	Poor	Fair	Fair	Low	b,c,d,f	NIL				
						sub-total	9											
	G02	<i>Acacia confusa</i>	台灣相思	2-11	0.1-0.28	2-9	13	Fair	Poor	Fair	Fair	Low	b,c,d,f	NIL	7	9	Conflict with Road Works	NIL
		<i>Bauhinia variegata</i>	宮粉洋蹄甲	5	0.12	4	1	Fair	Poor	Poor	Fair	Low	b,c,d,f	NIL				
		<i>Carica papaya</i>	番木瓜	5	0.10	2	1	Fair	Fair	Fair	Fair	Low	b,c,d	NIL				
		<i>Leucaena leucocephala</i>	銀合歡	6	0.10	5	1	Fair	Poor	Fair	Fair	Low	b,c,f,g	NIL				
						sub-total	16											
	G03	<i>Acacia auriculiformis</i>	耳果相思	5	0.110	3	1	Fair	Poor	Fair	Fair	Low	b,c,f	NIL	62	13	Conflict with Road Works	NIL
		<i>Archontophoenix alexandrae</i>	假檳榔	6	0.11-0.12	3	3	Fair	Fair	Fair	Fair	Medium	-	NIL				
		<i>Cassia surattensis</i>	黃槐	4	0.100	3	1	Fair	Poor	Fair	Fair	Low	b,c,f	NIL				
		<i>Casuarina equisetifolia</i>	木麻黃	5-13	0.1-0.4	2-6	35	Fair	Fair	Fair	Fair	Low	b,c,d	NIL				
		<i>Celtis sinensis</i>	朴樹	6-7	0.12-0.2	4-5	4	Fair	Fair	Fair	Fair	Low	b,c	NIL				
		<i>Ficus benjamina</i>	垂葉榕	5-10	0.3-0.4	3-9	17	Fair	Poor	Fair	Fair	Low	b,c,d,f	NIL				
		<i>Ficus hispida</i>	對葉榕	4	0.250	4	1	Fair	Poor	Fair	Fair	Low	b,c,d,f	NIL				
		<i>Ficus microcarpa</i>	細葉榕	5-6	0.2-0.25	4-5	2	Fair	Fair	Fair	Fair	Low	b,c,d	NIL				
		<i>Lagerstroemia speciosa</i>	大葉紫薇	3-5	0.1-0.11	2-4	3	Fair	Fair	Fair	Fair	Medium	-	NIL				
		<i>Leucaena leucocephala</i>	銀合歡	5-6	0.095-0.2	2-3	8	Fair	Poor	Fair	Fair	Low	b,c,f,g	NIL				
					sub-total	75												
	G04	<i>Acacia confusa</i>	台灣相思	2-11	0.1-0.28	2-9	16	Fair	Poor	Fair	Fair	Low	b,c,d,f	NIL	0	18	Conflict with Road Works	NIL
		<i>Leucaena leucocephala</i>	銀合歡	6-7	0.1-0.15	4-5	2	Fair	Poor	Fair	Fair	Low	b,c,d,f	NIL				
						sub-total	18											
	G05	<i>Ficus benjamina</i>	垂葉榕	5-9	0.15-0.4	3-5	3	Fair	Poor	Fair	Fair	Low	b,c,d,f	NIL	3	0	NIL	NIL
						sub-total	3											
	G06	<i>Celtis sinensis</i>	朴樹	6-7	0.12-0.2	4-5	2	Fair	Poor	Fair	Fair	Low	b,c,f	NIL	0	2	Conflict with Road Works	NIL
						sub-total	2											
	G07	<i>Ficus benjamina</i>	垂葉榕	8	0.35	4	1	Fair	Poor	Fair	Fair	Low	b,c,d,f	NIL	0	4	Conflict with Road Works	NIL
		<i>Leucaena leucocephala</i>	銀合歡	6	0.10	3	3	Fair	Poor	Fair	Fair	Low	b,c,f,g	NIL				
					sub-total	4												
G08	<i>Melia azedarach</i>	楝	7	0.100	3	1	Fair	Poor	Fair	Fair	Low	b,c,f	NIL	0	2	Conflict with Road Works	NIL	
	<i>Tabebuia impetiginosa</i>	紅花風鈴木	6	0.100	5	1	Fair	Fair	Fair	Fair	Low	b,c	NIL					
					sub-total	2												
Approximate Total						129								81	48			

Remarks for Suitability for Transplanting

- (a) Low amenity value;
- (b) Irrecoverable form after transplanting (e.g. transplanting requires substantial crown and root pruning);
- (c) Low chance of survival upon transplanting;
- (d) Very large size (unless the feasibility to transplant has been considered financially reasonable and technically feasible during the feasibility stage);
- (e) With evidence of over-maturity and onset of senescence;
- (f) With poor health, structure or form (e.g. imbalanced form, leaning, with major cavity/cracks/splits);
- (g) Undesirable species (e.g. *Leucaena leucocephala* which is an invasive exotic and self-seeding tree); or
- (h) Trees grown under poor conditions which have limited the formation of proper root ball necessary for transplanting (e.g. on steep slope).



LEGEND:

- PROJECT BOUNDARY
- PROPOSED ROAD ALIGNMENT
- EXISTING TREE GROUP TO BE AFFECTED
- EXISTING TREE GROUP TO BE RETAINED

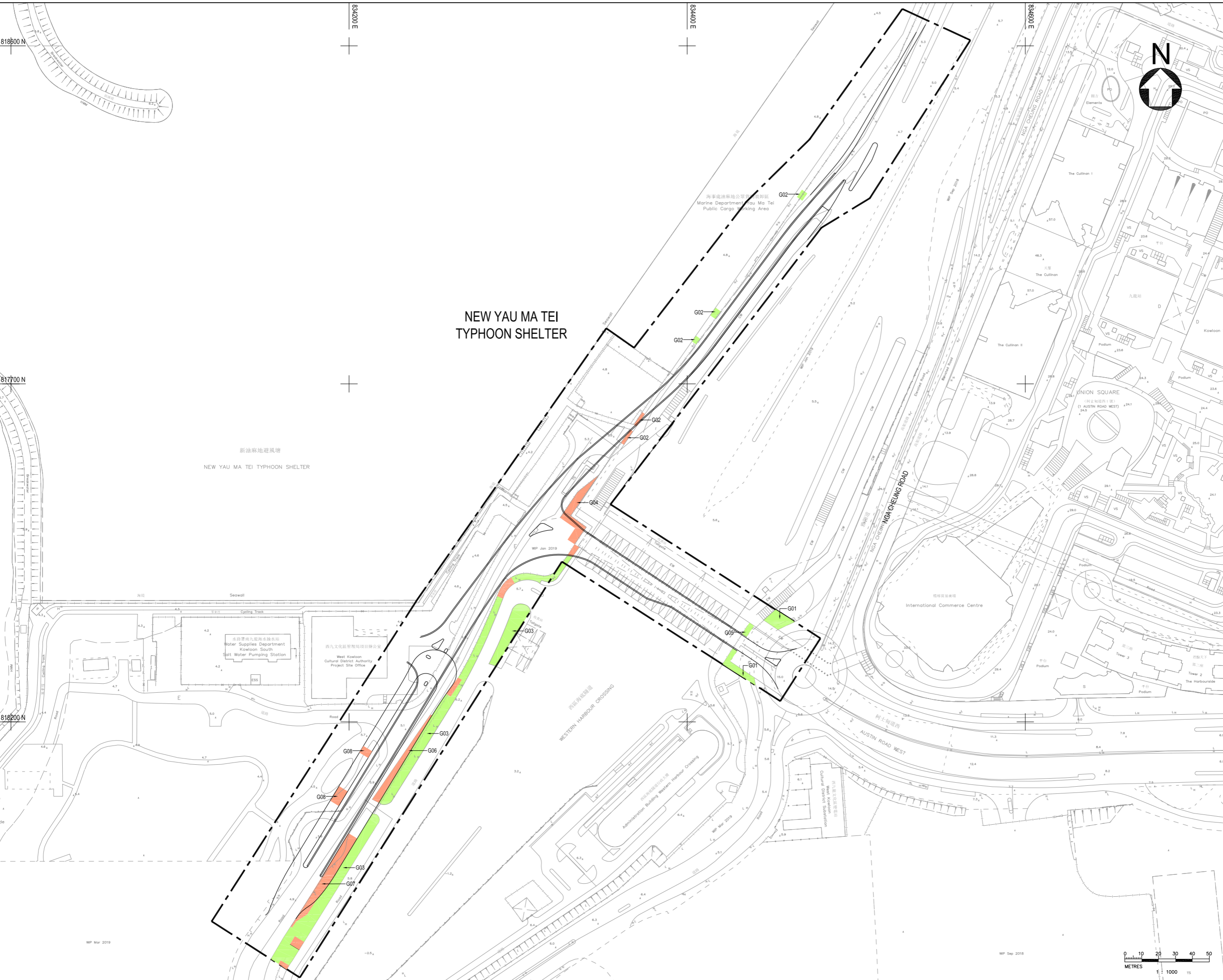
REV.	DATE	DESCRIPTION	INITIAL

JOB TITLE
REVISED AUSTIN ROAD FLYOVER

DRAWING TITLE
APPENDIX 8.1 BROAD-BRUSH TREE SURVEY PLAN

SCALE	1:1000	PRINTED	A1
CHECKED	-	DATE	-
APPROVED	-	DATE	-
DRAWN	-	DATE	-
CONTRACT NO.			
DRAWING NO.	04XXX-AEC-CIV-DWG-0818-R35-XXXX-WS1	REV.	XA
CAD REF NAME:	04XXX-AEC-CIV-DWG-0818-R35-XXXX-WS1-XA.DWG		
THE AUTHORITY			

西九文化區



818600 N
834200 E
834400 E
834600 E

817700 N
818200 N

818200 N

818200 N

WP Mar 2019
WP Sep 2018

