



Appendix 5-2

Supplementary Report on Nesting Activities at Ha Che Egretry



**Contract No. PM 10/2014 Ecological Baseline Survey for
Drainage Improvement Works in Yuen Long, Stage 1**

**Supplementary Report on Nesting Activities
at Ha Che Egretry**

Job Ref.: 14/976/331 DSD-YL



Date: July 2015

**Contract No. PM 10/2014
Ecological Baseline Survey for
Drainage Improvement Works in Yuen Long, Stage 1**

Supplementary Report on Nesting Activities
at Ha Che Egretty

(Issue 1)

July 2015

| | Name | Signature |
|--------------|----------------------------------|---|
| Prepared by: | Elizabeth WU |  |
| Reviewed by: | Geoff CAREY |  |
| Date: | 15th July 2015 | |

CONTENTS

| | | |
|---|-----------------------|---|
| 1 | INTRODUCTION | 1 |
| 2 | METHODOLOGIES..... | 1 |
| 3 | SURVEY FINDINGS | 1 |
| 4 | CONCLUSIONS | 1 |

LIST OF FIGURES

Figure 1 Flight paths of Ha Che Egret recorded during April to July 2015

1 INTRODUCTION

- 1.1.1 AEC Ltd. was appointed by the Drainage Services Department in January 2015 to undertake ecological survey works for the Contract No. PM 10/2014 Ecological Baseline Survey for Drainage Improvement Works in Yuen Long, Stage 1 (hereafter “the Project”) of Agreement No. CE 22/2013 (DS) Drainage Improvement Works in Yuen Long, Stage 1 – Investigation, Design and Construction. Submission of a supplementary report on nesting activities at Ha Che Egretty during the breeding season between April and July 2015 is required.
- 1.1.2 This report summarises the findings of the flight line surveys at Ha Che Egretty conducted during April to July 2015 and other observations at the Egretty.

2 METHODOLOGIES

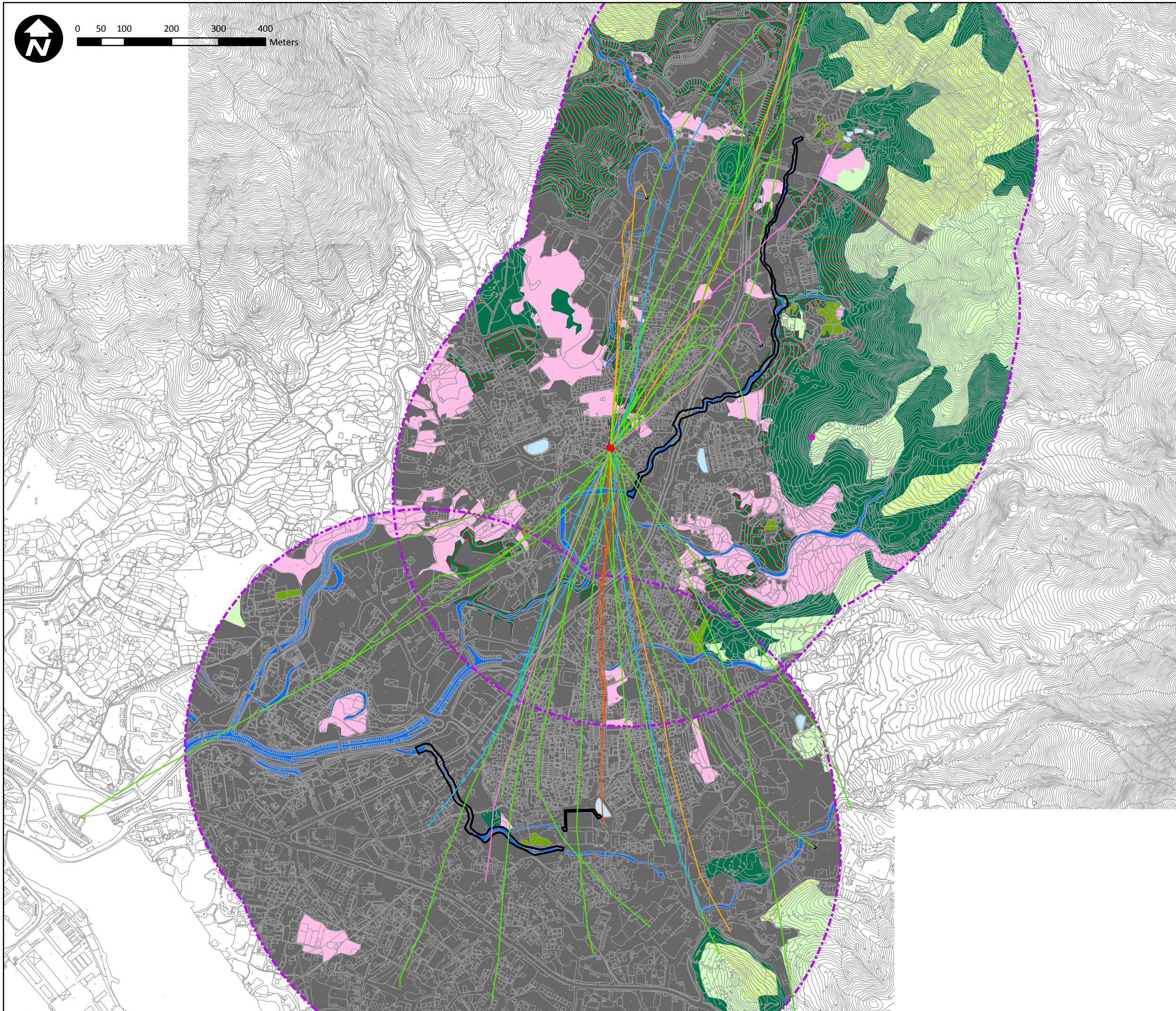
- 2.1.1 The distribution and abundance of nests in the egretty were recorded; in addition, the height, crown spread and species of trees with nests and whether there was any sign of disturbance at the egretty were also recorded.
- 2.1.2 Flight line surveys were also conducted at Ha Che Egretty once a month from April to July 2015. The surveys started at sunrise and lasted for two hours, and flight line of each adult ardeid leaving the nest were followed with the aid of binoculars until it landed at the foraging site. The landing locations were also recorded and habitat type at the location of landing identified. The flight lines were recorded as far as possible, or until the ardeids flew out of sight.

3 SURVEY FINDINGS

- 3.1.1 A single species, Chinese Pond Heron *Ardeola bacchus*, was recorded nesting at Ha Che Egretty. The number of nests recorded ranged from seven to 17 (seven in April, 17 in May, 13 in June and 14 in July). The nests were occupied by adult birds. The nests were all recorded on a single tree *Ficus microcarpa* (location shown on **Figure 1**) approximately 12m tall with approximately 15m of crown spread. There were village houses nearby (approximately 10m from the nesting tree) and there was a fenced area, which was either a construction site or wasteground, approximately 30m from the nested tree. Human disturbance is not considered to be high as no evidence of such activity was noted during the visits to the egretty; however, the fenced area referred to above, in which no activities were noted during the visits, requires further checking during the breeding season.
- 3.1.2 The flight paths recorded from April to July 2015 are presented in **Figure 1**. Most birds flew out of sight before landing; for those that landed, the birds landed on watercourse and urban/residential area (see also **Figure 1**) outside the Work Limit Boundary. A portion of the birds flew to the south of the Egretty towards/across the Work Limit Boundary of one of the Survey Works Part 2 (Ho Lik Pui). Based on these findings, the project stream is not considered to be one of the foraging areas of the breeding ardeids.

4 CONCLUSIONS

- 4.1.1 A maximum of 17 nests were found at Ha Che Egretty during April to July 2015. The breeding birds were not foraging within the Work Limit Boundary.



| | |
|--|---|
| | Work Limit Boundary |
| | 500m Study Area |
| | Agricultural Land |
| | Pond |
| | Watercourse |
| | Grassland |
| | Grassland/Shrubland |
| | Secondary Woodland |
| | Fung Shui Wood |
| | Orchard |
| | Plantation |
| | Waste Ground |
| | Urban/Residential Area |
| | Ha Che Egrety |
| | Observation Point |
| | Landing Location |
| | Fight Path with One Bird (cumulative number) |
| | Fight Path with Two Birds (cumulative number) |
| | Fight Path with Three Birds (cumulative number) |
| | Fight Path with Four Birds (cumulative number) |
| | Fight Path with Five Birds (cumulative number) |

| | | | |
|---|-----|-----------|---------------|
| Project Title: | | | |
| Contract No. PM 10/2014 Ecological Baseline Survey for Drainage Improvement Works in Yuen Long, Stage 1 | | | |
| Figure Title: | | | |
| Flight paths of Ha Che Egrety recorded during April to July 2015 | | | |
| Drawn by: | EW | Scale: | 1:7,589 on A3 |
| Checked By: | GJC | Date: | 15 Jul 2015 |
| Approved by: | GJC | | |
| Figure Number: | - | Revision: | 0 |