

- Site Boundary
- Conservation Area
- Transect - Verification Survey

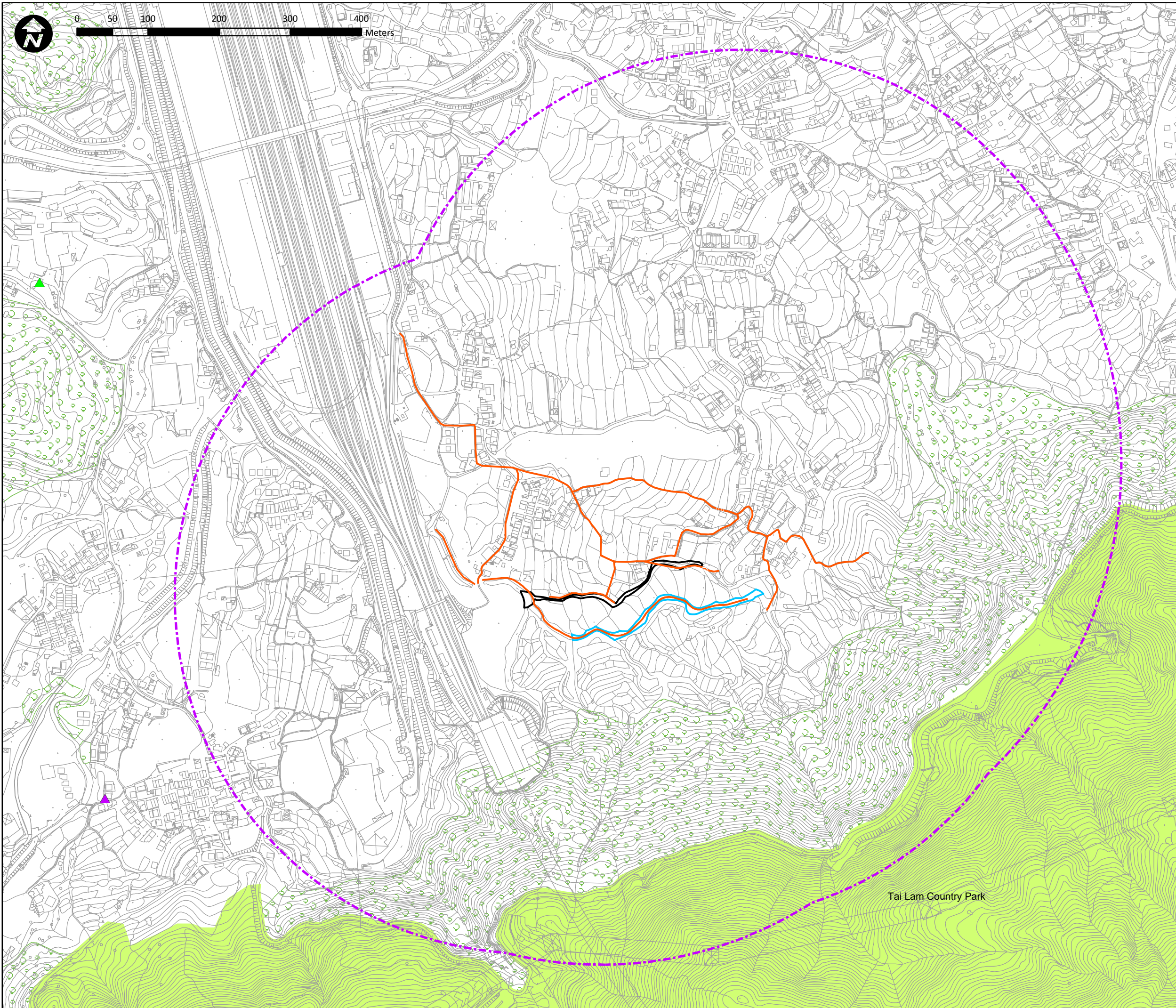


Project Title:  
CE22/2013 (DS)  
Drainage Improvement Works at Yuen Long, Stage 1 -  
Investigation, Design and Construction

Figure Title:  
Verification Survey Transect at Shun Shan New Village

Drawn by:	EW	Scale:	1:5,000 on A3
Checked By:	DJS	Date:	21 Sep 2015
Approved by:	DJS		

Figure Number:	Figure 5.1	Revision:	0
----------------	------------	-----------	---



- Site Boundary
- 500m Study Area
- Country Park
- Conservation Area
- Ecologically Important Stream
- Transect - Verification Survey
- ▲ Ma On Kong Egret (abandoned)
- ▲ Ho Pui Egret (abandoned)

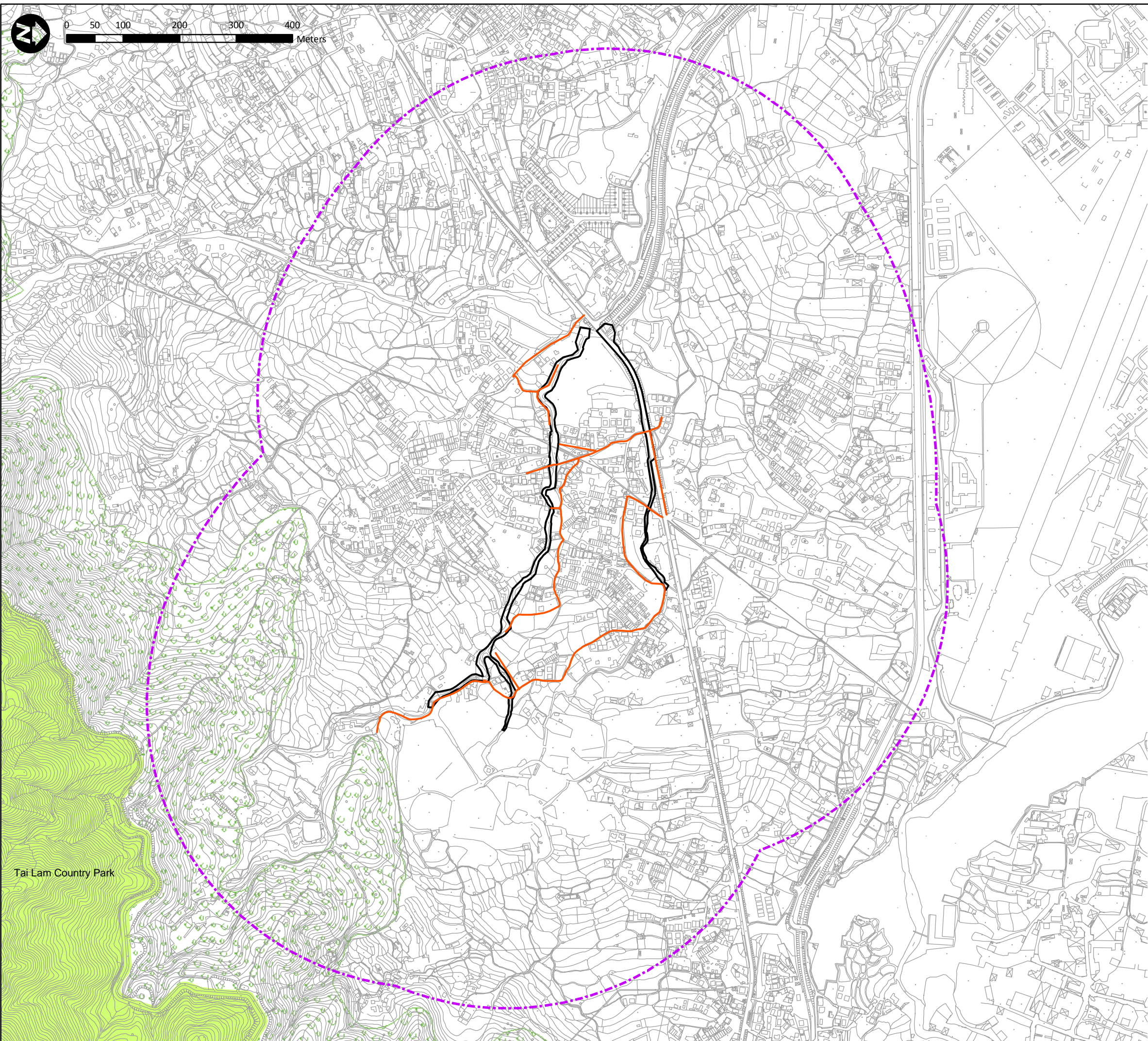
# ATKINS

Project Title:  
 CE22/2013 (DS)  
 Drainage Improvement Works at Yuen Long, Stage 1 -  
 Investigation, Design and Construction

Figure Title:  
 Verification Survey Transect at Tai Wo

Drawn by:	EW	Scale:	1:5,000 on A3
Checked By:	DJS	Date:	14 Sep 2015
Approved by:	DJS		

Figure Number: **Figure 5.2**      Revision: 0



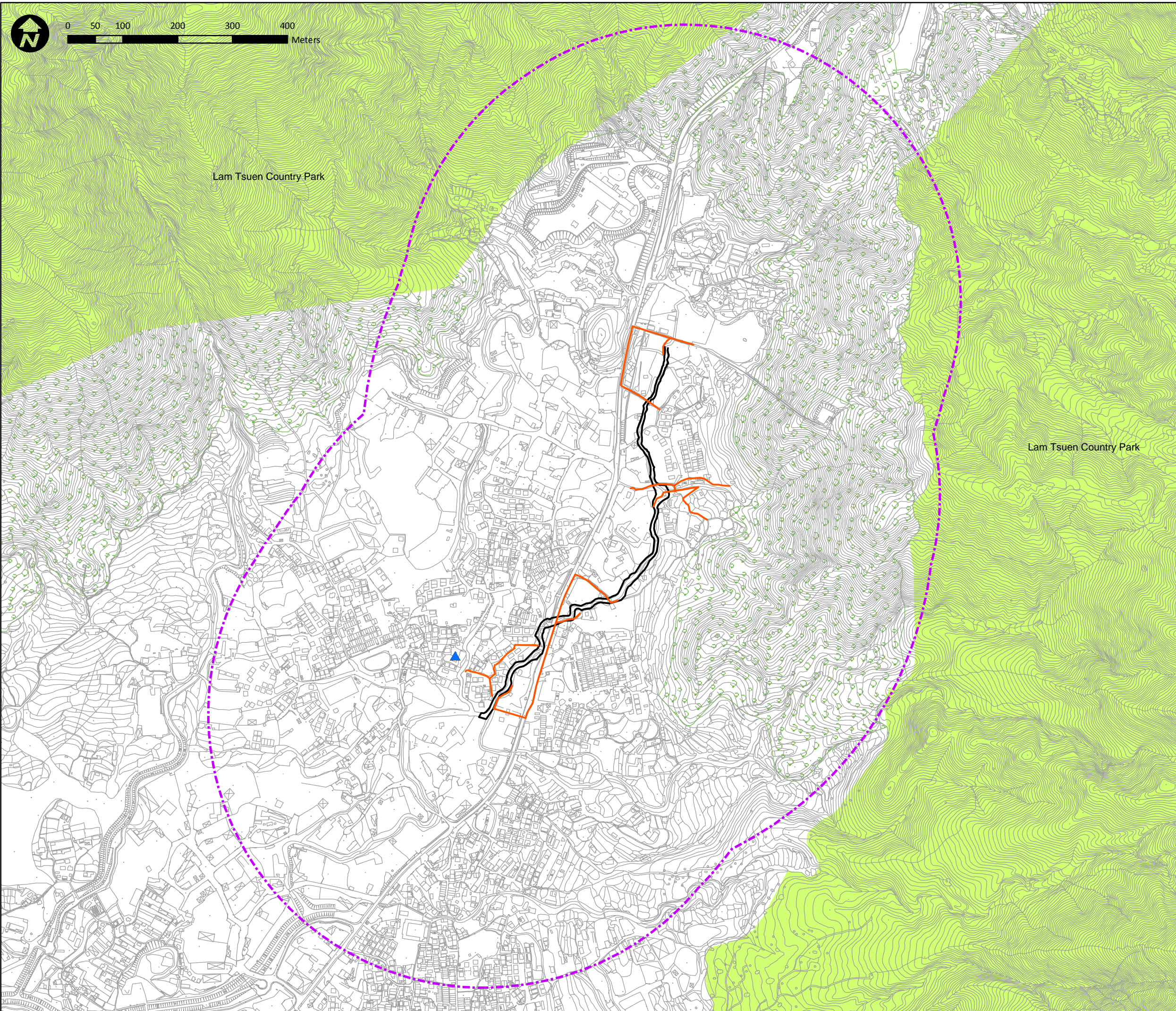
- 500m Study Area
- Site Boundary
- Country Park
- Conservation Area
- Transect - Verification Survey




**ATKINS**

Project Title:  
 CE22/2013 (DS)  
 Drainage Improvement Works at Yuen Long, Stage 1 -  
 Investigation, Design and Construction

Figure Title:  
 Verification Survey Transect at Lin Fa Tei

Drawn by:	EW	Scale:	1:6,500 on A3
Checked By:	DJS	Date:	21 Sep 2015
Approved by:	DJS		
Figure Number:	Figure 5.3		Revision: 0



-  Site Boundary
-  500m Study Area
-  Country Park
-  Conservation Area
-  Transect - Verification Survey
-  Ha Che Egrety

Lam Tsuen Country Park

Lam Tsuen Country Park

# ATKINS

Project Title:

CE22/2013 (DS)  
Drainage Improvement Works at Yuen Long, Stage 1 -  
Investigation, Design and Construction

Figure Title:

Verification Survey Transect at Ha Che

Drawn by:	EW	Scale:	1:6,500 on A3
Checked By:	DJS	Date:	9 Oct 2015
Approved by:	DJS		

Figure Number:	Figure 5.4	Revision:	1
----------------	------------	-----------	---