

LEGEND:  
 PROPOSED DRAINAGE WORKS

Rev.	Date	Description	By	Chkd	App'd
B	SEP 19	THIRD ISSUE	WSL	WWCT	WKML
A	SEP 16	SECOND ISSUE	WSL	RWKC	JEC
-	OCT 15	FIRST ISSUE	RC	WW	WW

Drawing Status: **DETAILED DESIGN**



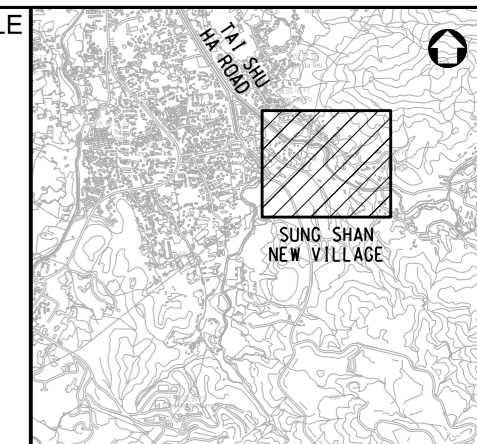
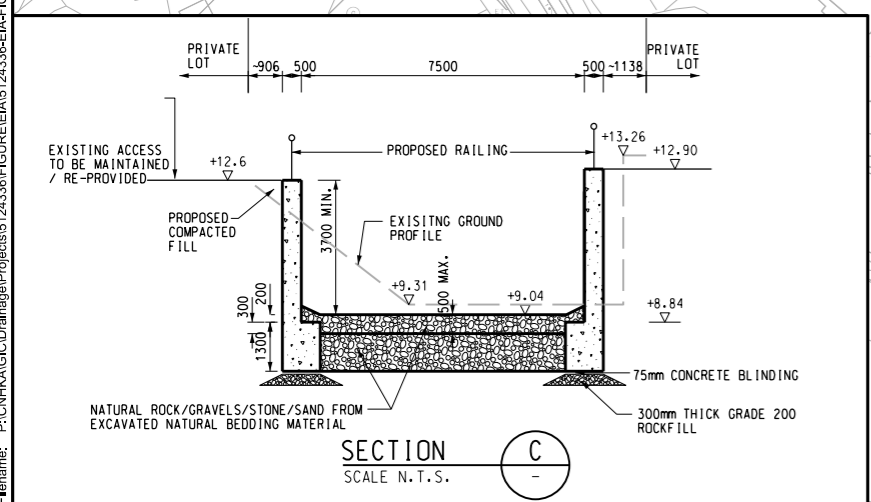
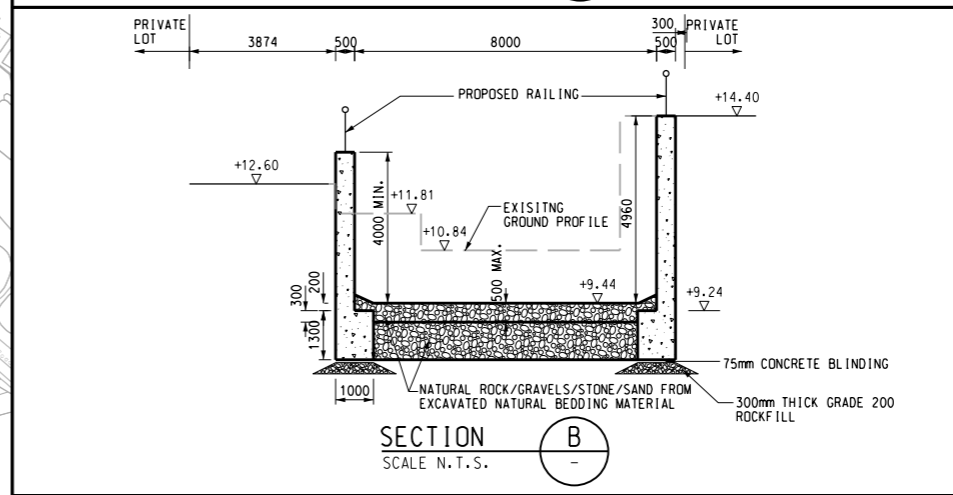
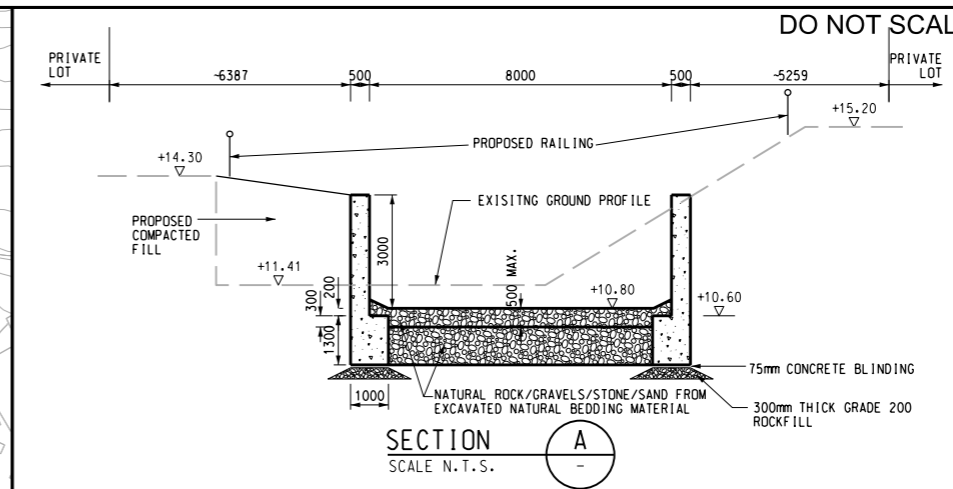
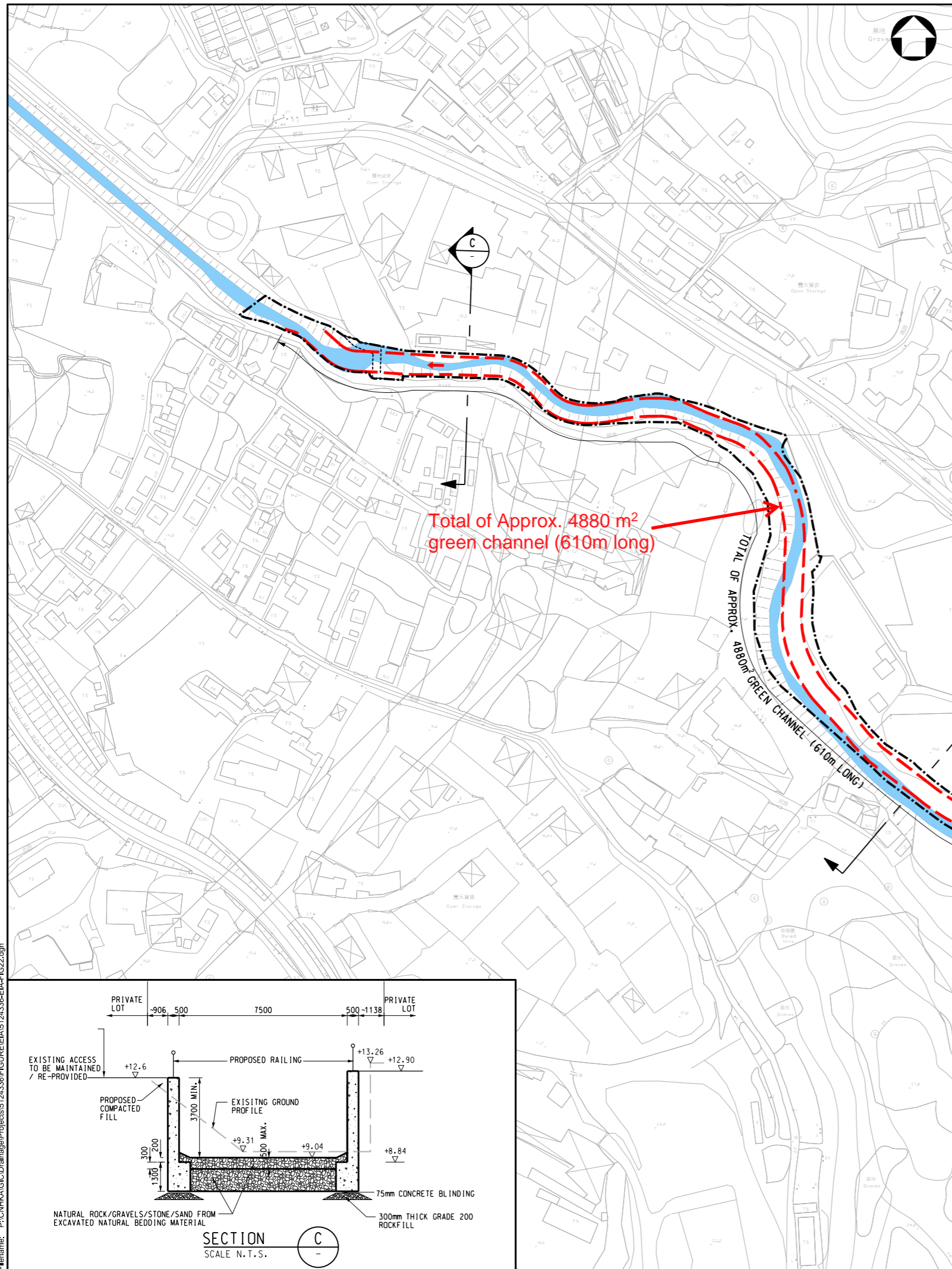
Client: 渠務署  
 Drainage Services Department  
 工程管理部  
 Project Management Division

Project Title: DRAINAGE IMPROVEMENT WORKS  
 IN YUEN LONG STAGE 1 - INVESTIGATION,  
 DESIGN AND CONSTRUCTION  
 CE 22/2013 (DS)

Drawing Title: **SITE LOCATION PLAN**

Scale	Designed	Drawn	Checked	Authorised
AS SHOWN	RC	AC	WW	WW
Original Size	Date	Date	Date	Date
A3	OCT 2015	OCT 2015	OCT 2015	OCT 2015
Drawing Number	Revision			By
FIGURE 2.1	B			

User name: CHEUJ8306 Date: 9/23/2019 Time: 4:05:12 PM  
 Filename: P:\CN\KALC\Drainage\Projects\5124336\FIGURE\EIA\5124336-EIA-FIG21.dgn



**NOTES:**  
1. FOR KEY PLAN REFER TO FIGURE 2.1.

**LEGEND:**  
 - - - SITE BOUNDARY  
 - - - PROPOSED RECTANGULAR CHANNEL  
 - - - PROPOSED CHANNEL CROSSING  
 - - - EXISTING STREAM  
 - - - PROPOSED SIDE SLOPE

Rev.	Date	Description	By	Chkd	App'd
E	MAY 20	SIXTH ISSUE	WSL	WWCT	WKML
D	MAY 20	FIFTH ISSUE	WSL	WWCT	WKML
C	JAN 20	FOURTH ISSUE	WSL	WWCT	WKML
B	SEP 19	THIRD ISSUE	WSL	WWCT	WKML
A	SEP 16	SECOND ISSUE	WSL	RWKC	JEC
-	OCT 15	FIRST ISSUE	RC	WW	WW

Drawing Status: **DETAILED DESIGN**



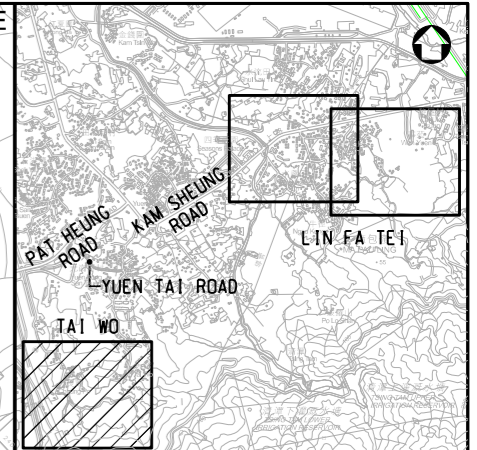
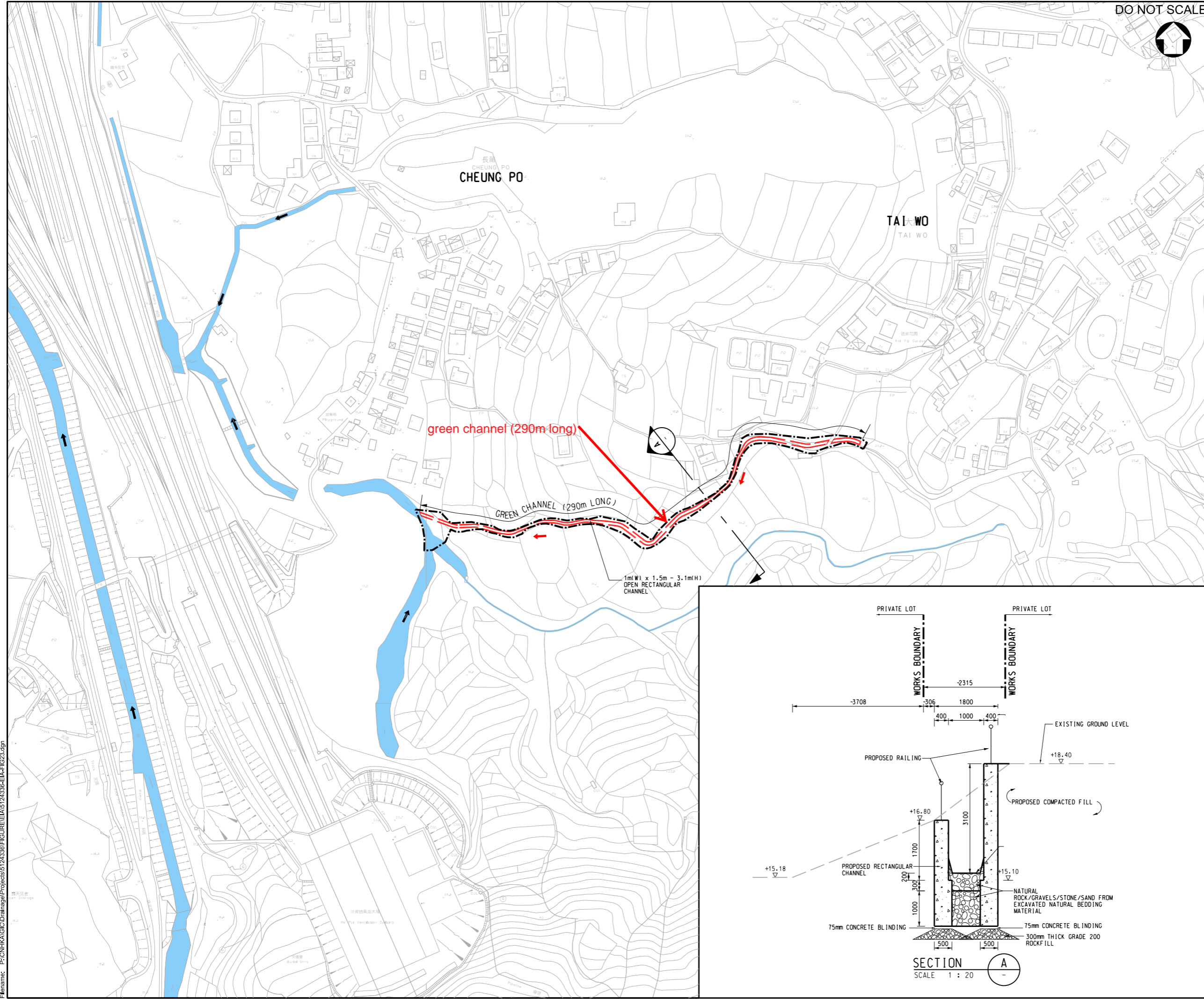
渠務署  
Drainage Services Department  
工程管理部  
Project Management Division

Project Title:  
**DRAINAGE IMPROVEMENT WORKS IN YUEN LONG STAGE 1 - INVESTIGATION, DESIGN AND CONSTRUCTION CE 22/2013 (DS)**

Drawing Title:  
**PROPOSED DRAINAGE IMPROVEMENT WORKS AT SUNG SHAN NEW VILLAGE**

Scale	Designed	Drawn	Checked	Authorised
1 : 2000	RC	AC	WW	WW
Original Size	Date	Date	Date	Date
A3	OCT 2015	OCT 2015	OCT 2015	OCT 2015
Drawing Number	Revision			
FIGURE 2.2				E

User name: CHEU8306 Date: 14/10/2021 Time: 11:03:33 PM  
Filename: P:\CN\KAL\CD\Drainage\Projects\5124336\FIGURE\E\A5\24336-EIA-FIG22.dgn



**KEY PLAN**  
N.T.S.

**NOTES:**  
1. FOR KEY PLAN REFER TO FIGURE 2.1.

- LEGEND:**
- SITE BOUNDARY
  - PROPOSED RECTANGULAR CHANNEL
  - EXISTING STREAM

Rev.	Date	Description	By	Chkd	App'd
E	DEC 20	SIXTH ISSUE	WSL	WWCT	WKML
D	MAY 20	FIFTH ISSUE	WSL	WWCT	WKML
C	JAN 20	FOURTH ISSUE	WSL	WWCT	WKML
B	SEP 19	THIRD ISSUE	WSL	WWCT	WKML
A	SEP 16	SECOND ISSUE	WSL	RWKC	JEC
-	OCT 15	FIRST ISSUE	RC	WW	WW

Drawing Status: **DETAILED DESIGN**



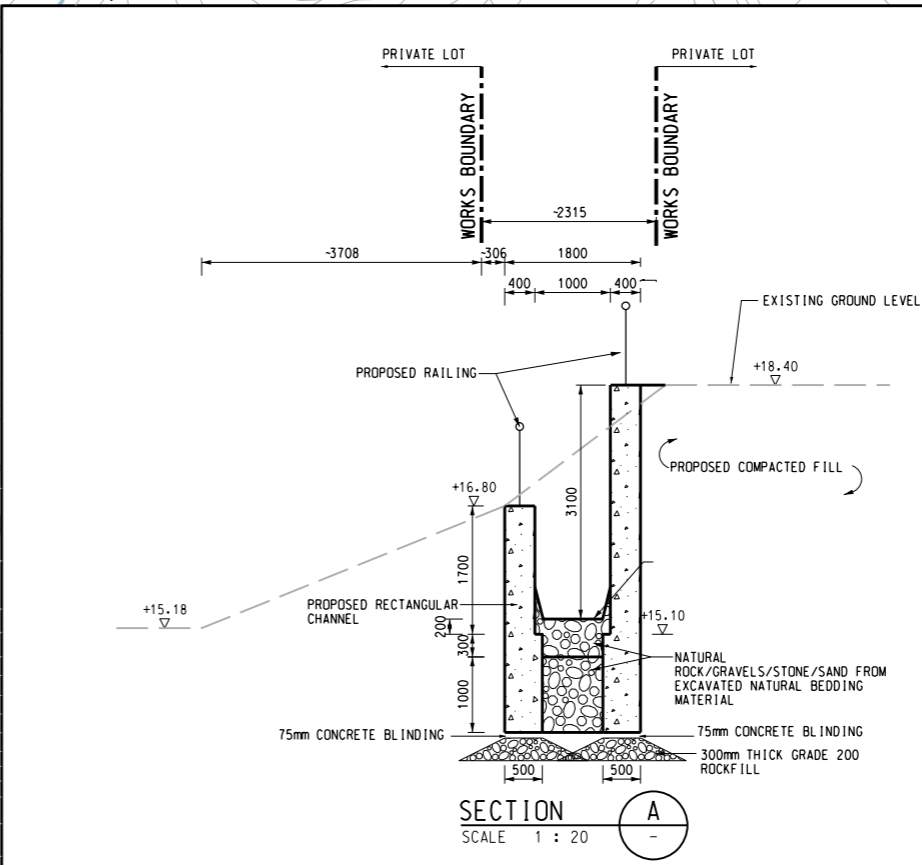
渠務署  
Drainage Services Department  
工程管理部  
Project Management Division

Project Title:  
**DRAINAGE IMPROVEMENT WORKS IN YUEN LONG STAGE 1 - INVESTIGATION, DESIGN AND CONSTRUCTION CE 22/2013 (DS)**

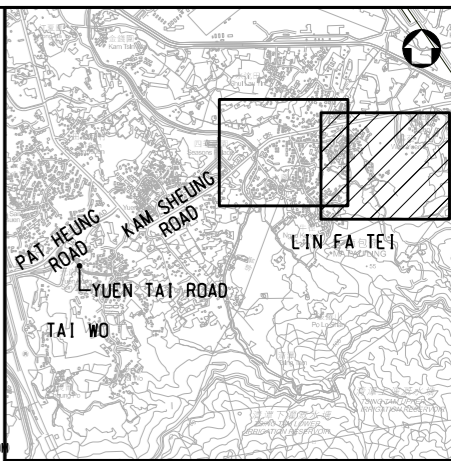
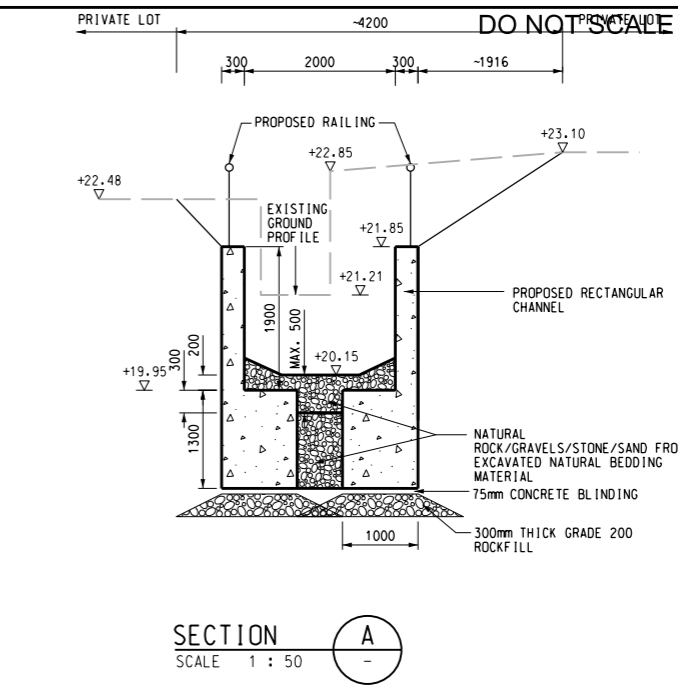
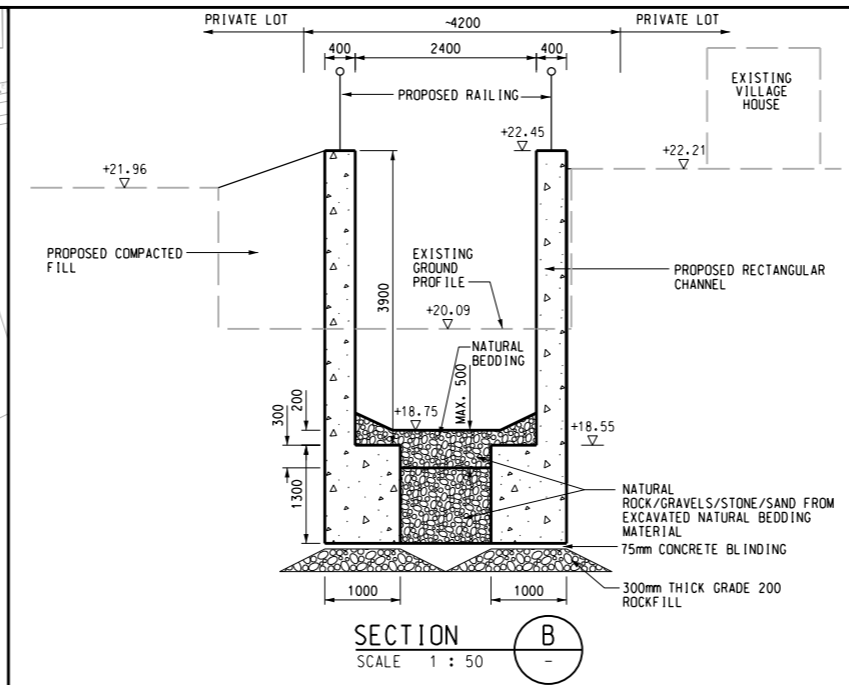
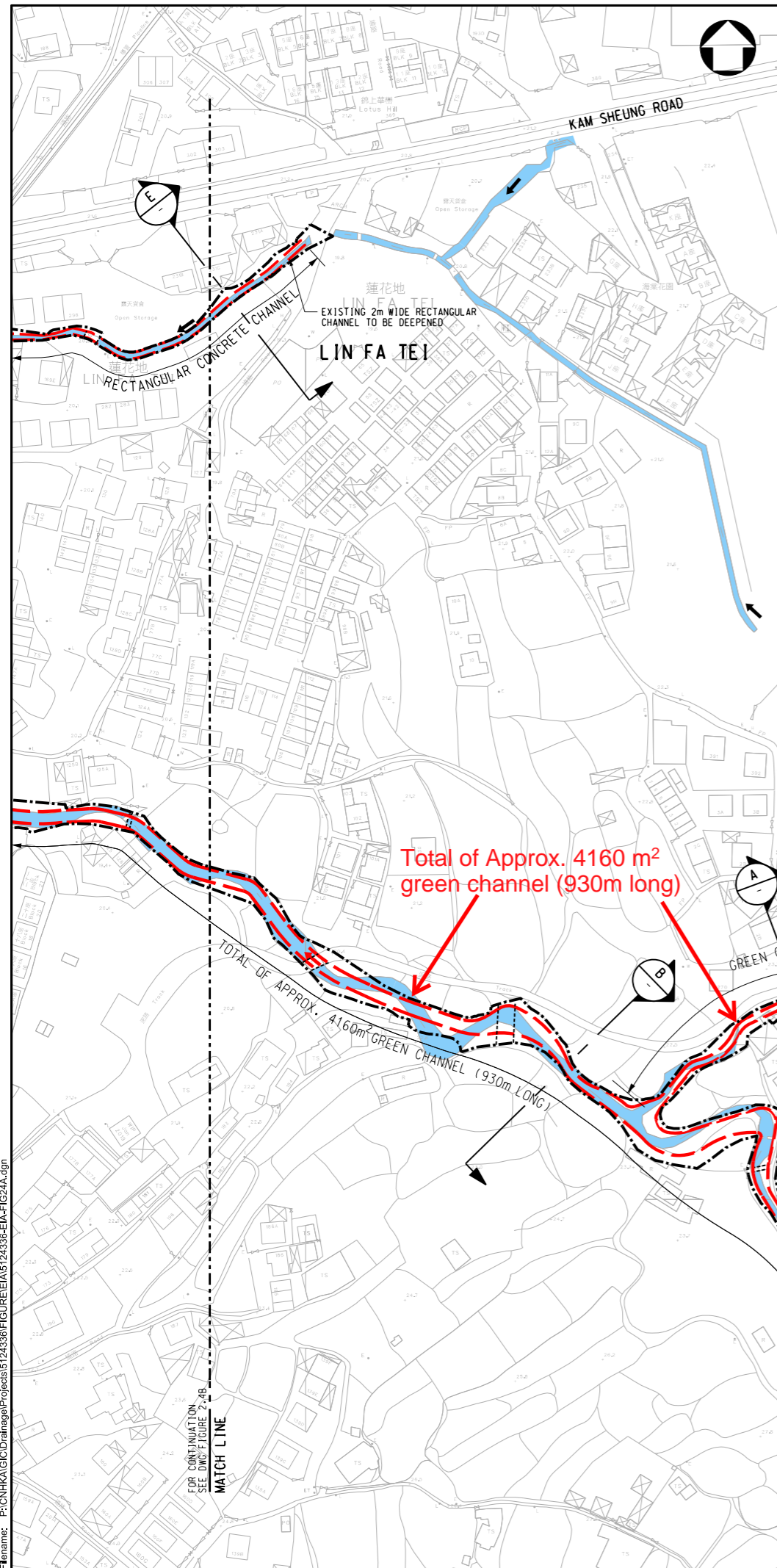
Drawing Title:  
**PROPOSED DRAINAGE IMPROVEMENT WORKS AT TAI WO**

Scale	Designed	Drawn	Checked	Authorised
AS SHOWN	RC	AC	WW	WW
Original Size	Date	Date	Date	Date
A3	OCT 2015	OCT 2015	OCT 2015	OCT 2015

Drawing Number: **FIGURE 2.3** Revision: **E**



User name: CHEUJ806 Date: 1/10/2015 Time: 11:02:51 PM  
Filename: P:\CNHKA\IC\Drainage\Projects\5124336\FIGURE\E\A5\24336-EIA-FIG23.dgn



KEY PLAN  
N.T.S.

NOTES:  
1. FOR KEY PLAN REFER TO FIGURE 2.1.

- LEGEND:
- SITE BOUNDARY
  - PROPOSED RECTANGULAR CHANNEL
  - PROPOSED CHANNEL CROSSING
  - EXISTING STREAM

Rev.	Date	Description	By	Chkd	App'd
D	DEC 20	FIFTH ISSUE	WSL	WWCT	WKML
C	JAN 20	FOURTH ISSUE	WSL	WWCT	WKML
B	SEP 19	THIRD ISSUE	WSL	WWCT	WKML
A	SEP 16	SECOND ISSUE	WSL	RWKC	JEC
-	OCT 15	FIRST ISSUE	RC	WW	WW

Detailed Design



渠務署  
Drainage Services Department

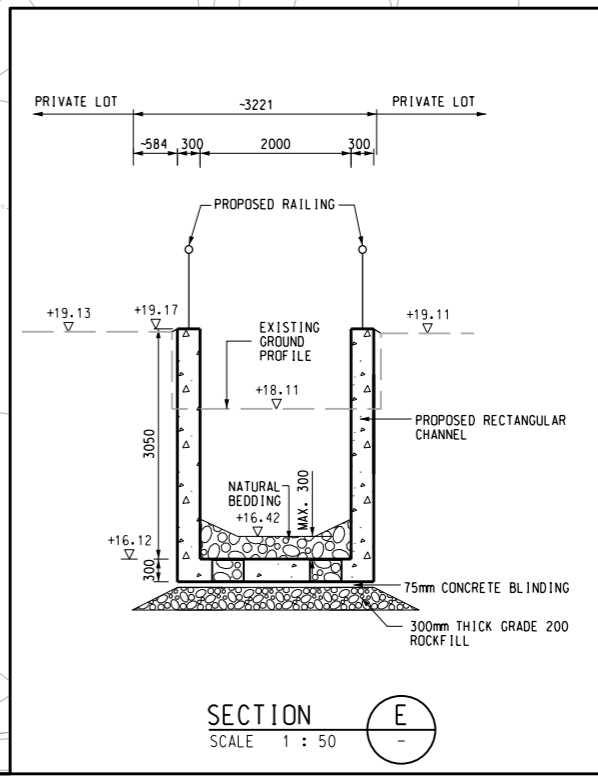
工程管理部  
Project Management Division

Project Title  
DRAINAGE IMPROVEMENT WORKS  
IN YUEN LONG STAGE 1 - INVESTIGATION,  
DESIGN AND CONSTRUCTION  
CE 22/2013 (DS)

Drawing Title  
PROPOSED DRAINAGE IMPROVEMENT  
WORKS AT LIN FA TEI (SHEET 1 OF 2)

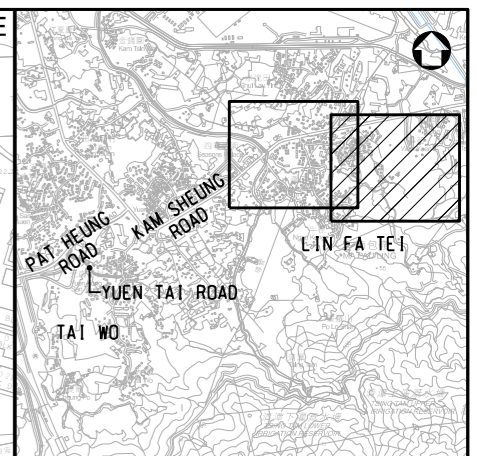
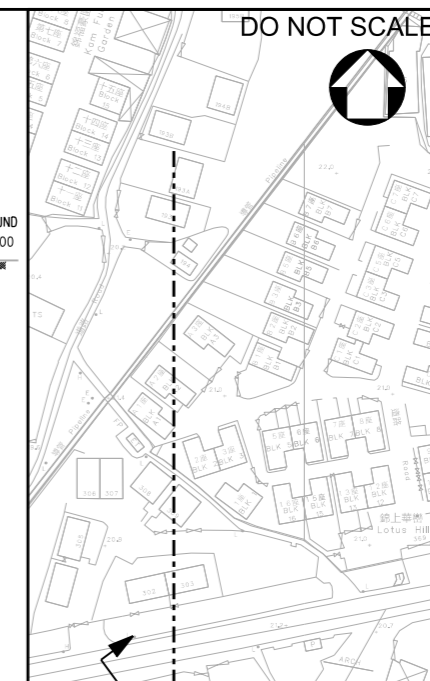
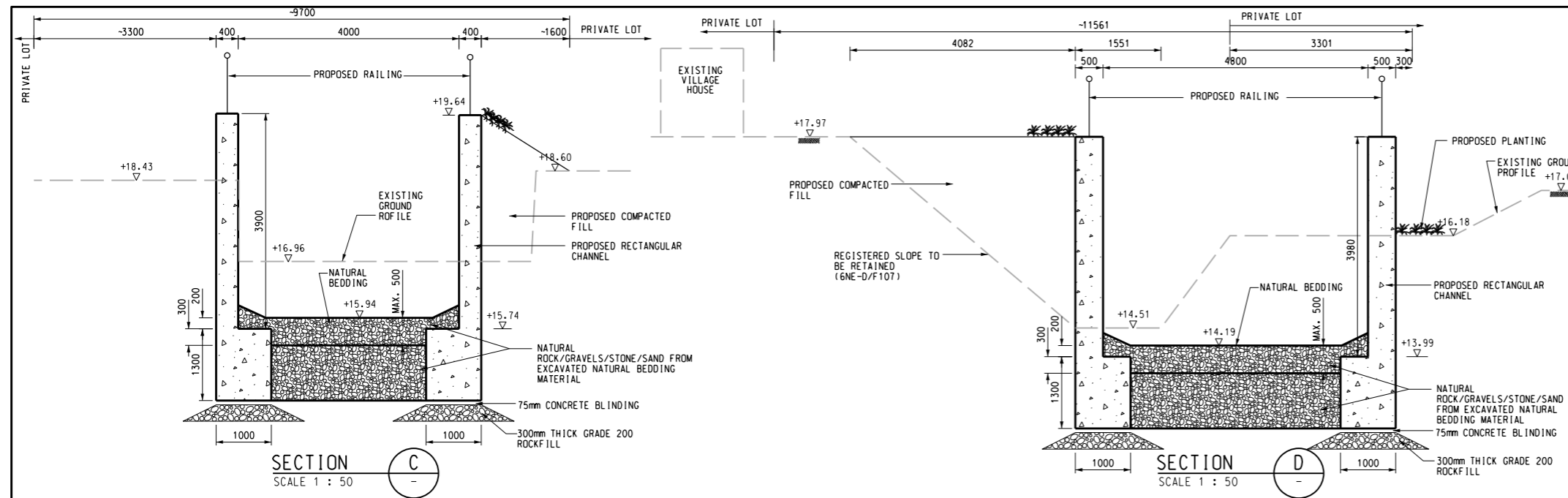
Scale	Designed	Drawn	Checked	Authorised
AS SHOWN	RC	AC	WW	WW
Original Size	Date	Date	Date	Date
A3	OCT 2015	OCT 2015	OCT 2015	OCT 2015

Drawing Number  
FIGURE 2.4A



SECTION E  
SCALE 1:50

User name: CHEU8306 Date: 14/10/2015 Time: 11:02:08 PM  
Filename: P:\CN\KAL\Drainage\Projects\5124336\FIGURE\E\A5124336-EIA-FIG2.4A.dgn

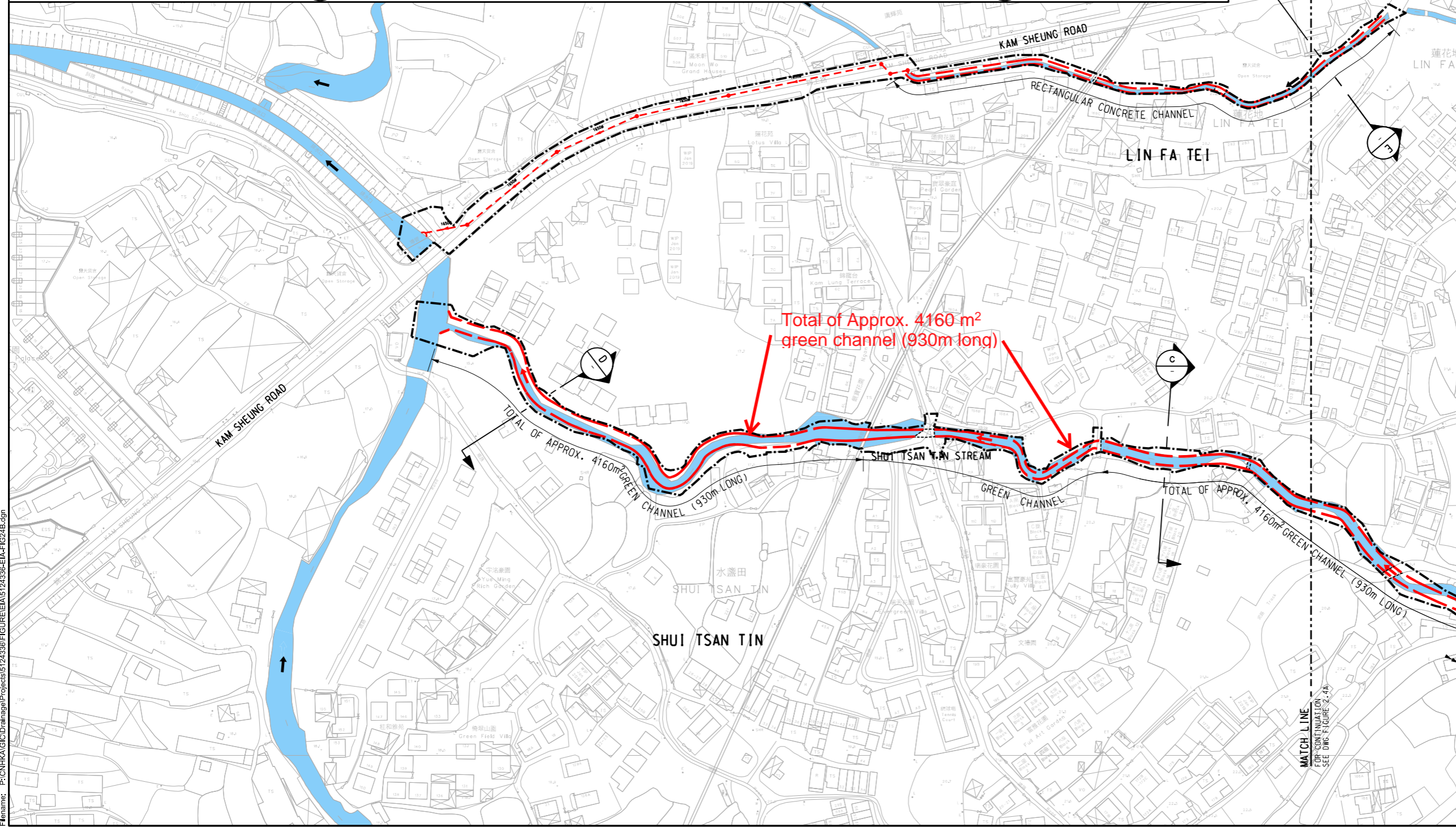


KEY PLAN  
N.T.S.

NOTES:  
1. FOR KEY PLAN REFER TO FIGURE 2.1.

LEGEND:

	SITE BOUNDARY
	PROPOSED RECTANGULAR CHANNEL
	PROPOSED DRAINAGE PIPE
	PROPOSED MANHOLE
	PROPOSED CHANNEL CROSSING
	EXISTING STREAM



Rev.	Date	Description	By	Chkd	App'd
D	DEC 20	FIFTH ISSUE	WSL	WWCT	WKML
C	JAN 20	FOURTH ISSUE	WSL	WWCT	WKML
B	SEP 19	THIRD ISSUE	WSL	WWCT	WKML
A	SEP 16	SECOND ISSUE	WSL	RWKC	JEC
-	OCT 15	FIRST ISSUE	RC	WW	WW

Drawing Status: **DETAILED DESIGN**



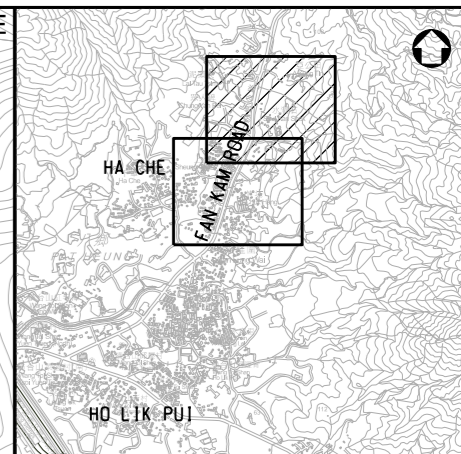
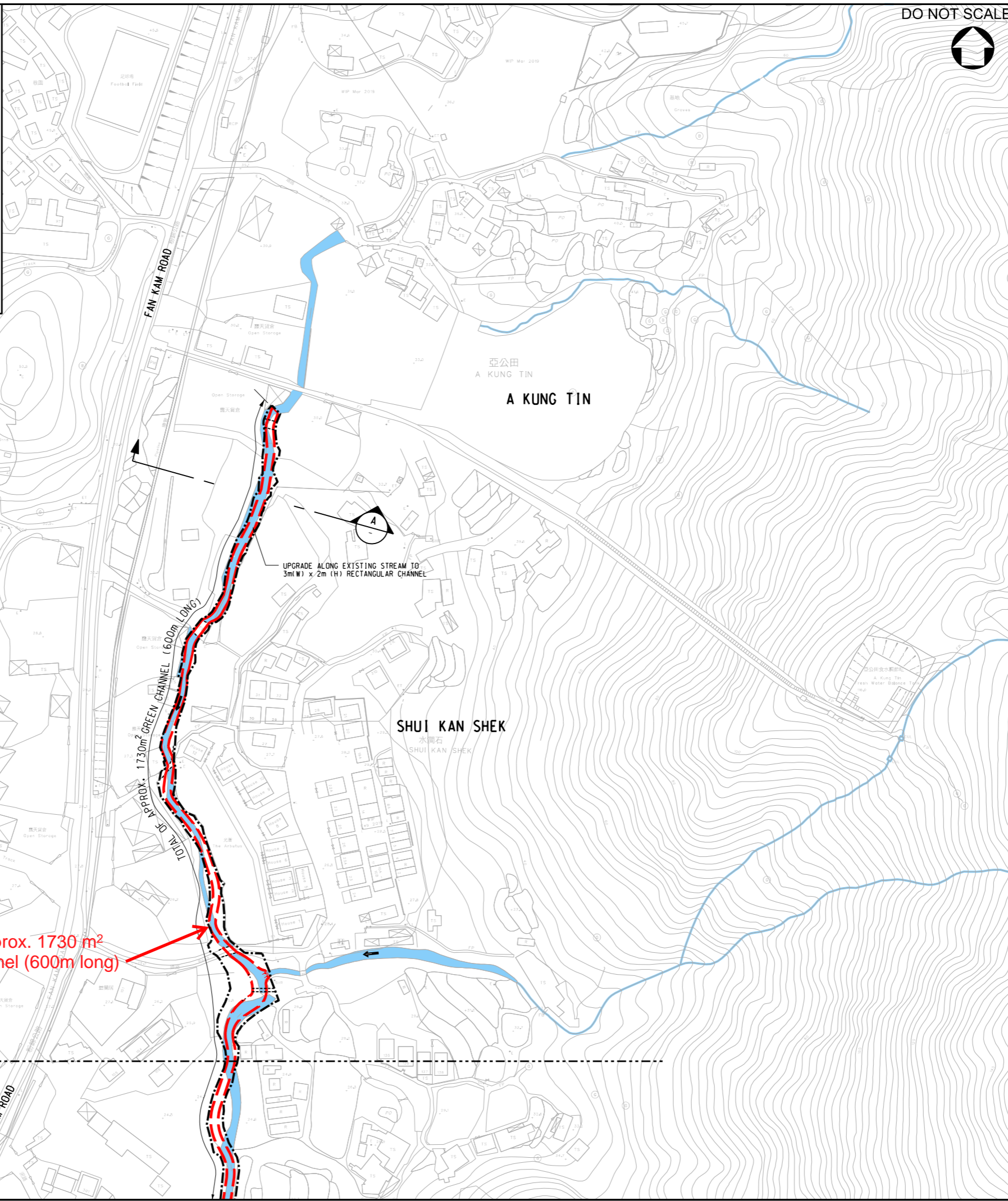
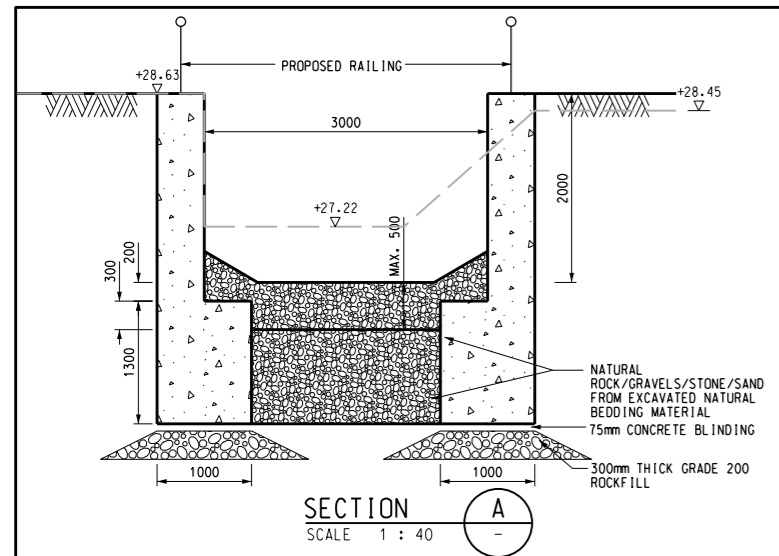
渠務署  
Drainage Services Department  
工程管理部  
Project Management Division

Project Title:  
DRAINAGE IMPROVEMENT WORKS  
IN YUEN LONG STAGE 1 - INVESTIGATION,  
DESIGN AND CONSTRUCTION  
CE 22/2013 (DS)

Drawing Title:  
PROPOSED DRAINAGE IMPROVEMENT  
WORKS AT LIN FA TEI (SHEET 2 OF 2)

Scale	Designed	Drawn	Checked	Authorised
1:2000	RC	AC	WW	WW
Original Size	Date	Date	Date	Date
A3	OCT 2015	OCT 2015	OCT 2015	OCT 2015
Drawing Number				Revision
FIGURE 2.4B				D

User name: CHEU8306 Date: 1/14/2021 Time: 11:04:48 PM  
Filename: P:\CN\KAL\CD\Drainage\Projects\5124336\FIGURE\EIA\5124336-EIA-FIG24B.dgn



**KEY PLAN**  
N.T.S.

**NOTES:**  
1. FOR KEY PLAN REFER TO FIGURE 2.1.

**LEGEND:**

	SITE BOUNDARY
	PROPOSED RECTANGULAR CHANNEL
	PROPOSED CHANNEL CROSSING
	EXISTING STREAM

Rev.	Date	Description	By	Chkd	App'd
D	DEC 20	FIFTH ISSUE	WSL	WWCT	WKML
C	JAN 20	FOURTH ISSUE	WSL	WWCT	WKML
B	SEP 19	THIRD ISSUE	WSL	WWCT	WKML
A	SEP 16	SECOND ISSUE	WSL	RWKC	JEC
-	OCT 15	FIRST ISSUE	RC	WW	WW

Drawing Status: **DETAILED DESIGN**



渠務署  
Drainage Services Department

工程管理部  
Project Management Division

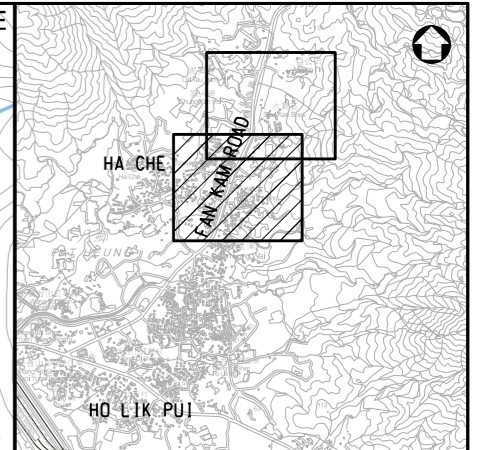
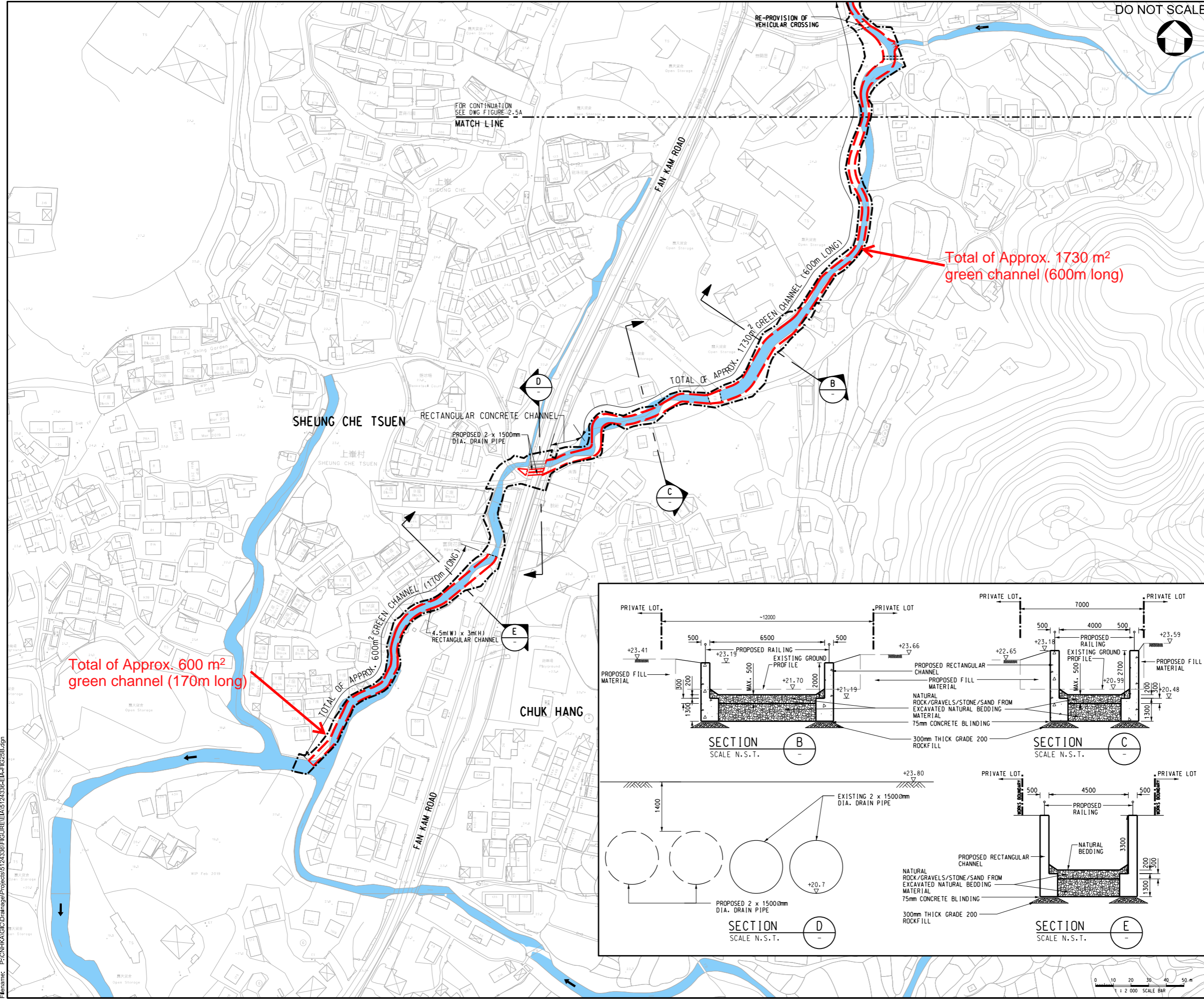
Project Title:  
**DRAINAGE IMPROVEMENT WORKS IN YUEN LONG STAGE 1 - INVESTIGATION, DESIGN AND CONSTRUCTION CE 22/2013 (DS)**

Drawing Title:  
**PROPOSED DRAINAGE IMPROVEMENT WORKS AT HA CHE (SHEET 1 OF 2)**

Scale	Designed	Drawn	Checked	Authorised
1 : 2000	RC	AC	WW	WW
Original Size	Date	Date	Date	Date
A3	OCT 2015	OCT 2015	OCT 2015	OCT 2015

Drawing Number: **FIGURE 2.5A**      Revision: **D**

User name: CHEU8306 Date: 14/10/2015 Time: 11:06:00 PM  
Filename: P:\CN\KAL\Drainage\Projects\5124336\FIGURE\EA\5124336-EA-FIG25A.dgn



**KEY PLAN**  
N.T.S.

**NOTES:**  
1. FOR KEY PLAN REFER TO FIGURE 2.1.

- LEGEND:**
- SITE BOUNDARY
  - PROPOSED RECTANGULAR CHANNEL
  - PROPOSED CHANNEL CROSSING
  - EXISTING STREAM

Rev.	Date	Description	By	Chkd	App'd
D	MAY 20	FIFTH ISSUE	WSL	WWCT	WKML
C	JAN 20	FOURTH ISSUE	WSL	WWCT	WKML
B	SEP 19	THIRD ISSUE	WSL	WWCT	WKML
A	SEP 16	SECOND ISSUE	WSL	RWKC	JEC
-	OCT 15	FIRST ISSUE	RC	WW	WW

Drawing Status: **DETAILED DESIGN**



渠務署  
Drainage Services Department

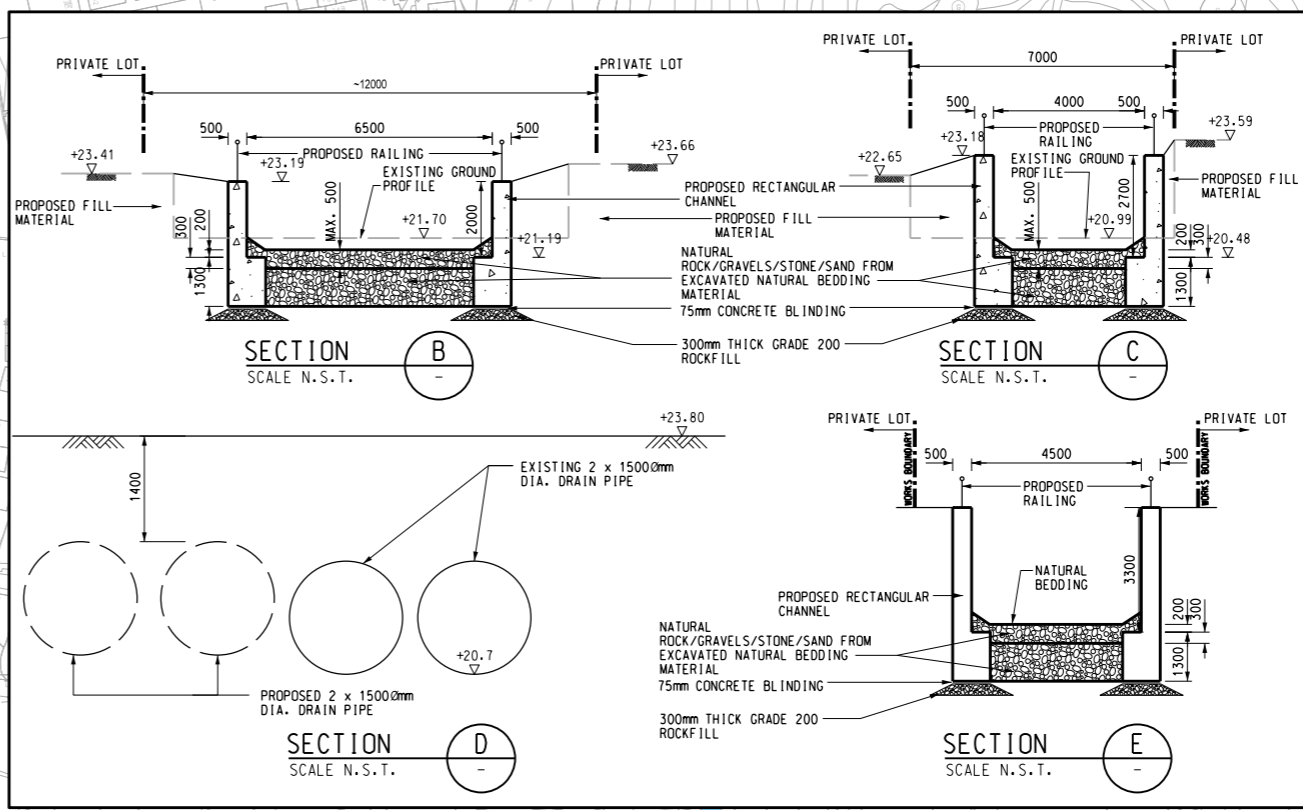
工程管理部  
Project Management Division

DRAINAGE IMPROVEMENT WORKS  
IN YUEN LONG STAGE 1 - INVESTIGATION,  
DESIGN AND CONSTRUCTION  
CE 22/2013 (DS)

PROPOSED DRAINAGE IMPROVEMENT  
WORKS AT HA CHE (SHEET 2 OF 2)

Scale	Designed	Drawn	Checked	Authorised
1 : 2000	RC	AC	WW	WW
Original Size	Date	Date	Date	Date
A3	OCT 2015	OCT 2015	OCT 2015	OCT 2015

Drawing Number: **FIGURE 2.5B**      Revision: **D**



User name: CHEUB06 Date: 14/10/2015 Time: 11:09:53 PM  
Filename: P:\CN\KHA\GIS\Drainage\Projects\5124336\FIGURE\EIA\5124336-EIA-FIG25B.dgn