

- NOTES:**
- FOR KEY PLAN REFER TO FIGURE 2.1.
- LEGEND:**
- SITE BOUNDARY
 - - - PROPOSED RECTANGULAR CHANNEL
 - - - PROPOSED CHANNEL CROSSING
 - EXISTING STREAM
 - PROPOSED SIDE SLOPE

Rev.	Date	Description	By	Chkd	App'd
E	MAY 20	SIXTH ISSUE	WSL	WWCT	WKML
D	MAY 20	FIFTH ISSUE	WSL	WWCT	WKML
C	JAN 20	FOURTH ISSUE	WSL	WWCT	WKML
B	SEP 19	THIRD ISSUE	WSL	WWCT	WKML
A	SEP 16	SECOND ISSUE	WSL	RWKC	JEC
-	OCT 15	FIRST ISSUE	RC	WW	WW

Drawing Status: **DETAILED DESIGN**



Client: 渠務署
Drainage Services Department

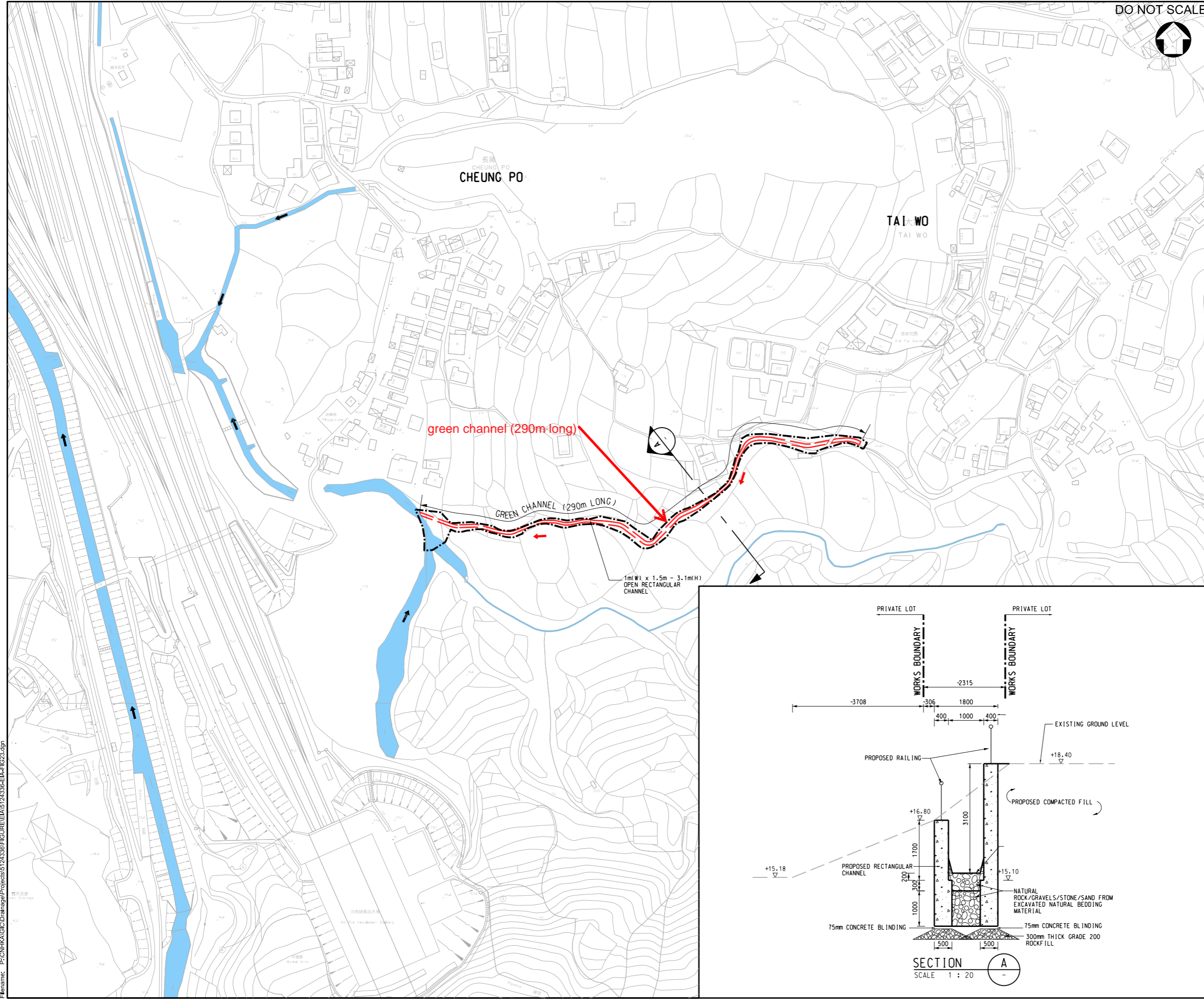
Project Title: 工程管理部
Project Management Division

Project Title: DRAINAGE IMPROVEMENT WORKS
IN YUEN LONG STAGE 1 - INVESTIGATION,
DESIGN AND CONSTRUCTION
CE 22/2013 (DS)

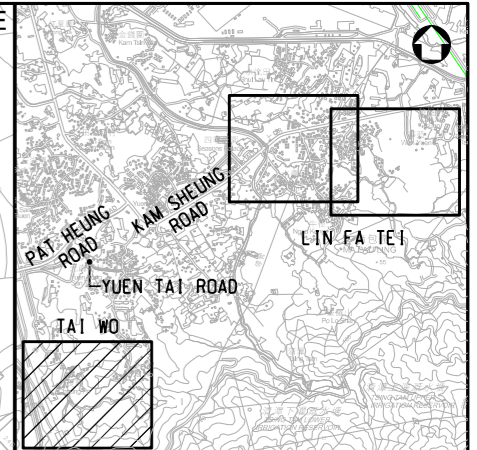
Drawing Title: **PROPOSED DRAINAGE IMPROVEMENT WORKS AT SUNG SHAN NEW VILLAGE**

Scale	Designed	Drawn	Checked	Authorised
1 : 2000	RC	AC	WW	WW
Original Size	Date	Date	Date	Date
A3	OCT 2015	OCT 2015	OCT 2015	OCT 2015
Drawing Number	Revision			
FIGURE 2.2	E			

User name: CHEU8306 Date: 14/10/2021 Time: 11:03:33 PM
Filename: P:\CN\KAL\G\Drainage\Projects\5124336\FIGURE\E\A5\24336-EIA-FIG22.dgn



DO NOT SCALE



KEY PLAN
N.T.S.

NOTES:
1. FOR KEY PLAN REFER TO FIGURE 2.1.

- LEGEND:
- SITE BOUNDARY
 - PROPOSED RECTANGULAR CHANNEL
 - EXISTING STREAM

Rev.	Date	Description	By	Chkd	App'd
E	DEC 20	SIXTH ISSUE	WSL	WWCT	WKML
D	MAY 20	FIFTH ISSUE	WSL	WWCT	WKML
C	JAN 20	FOURTH ISSUE	WSL	WWCT	WKML
B	SEP 19	THIRD ISSUE	WSL	WWCT	WKML
A	SEP 16	SECOND ISSUE	WSL	RWKC	JEC
-	OCT 15	FIRST ISSUE	RC	WW	WW

Drawing Status: **DETAILED DESIGN**



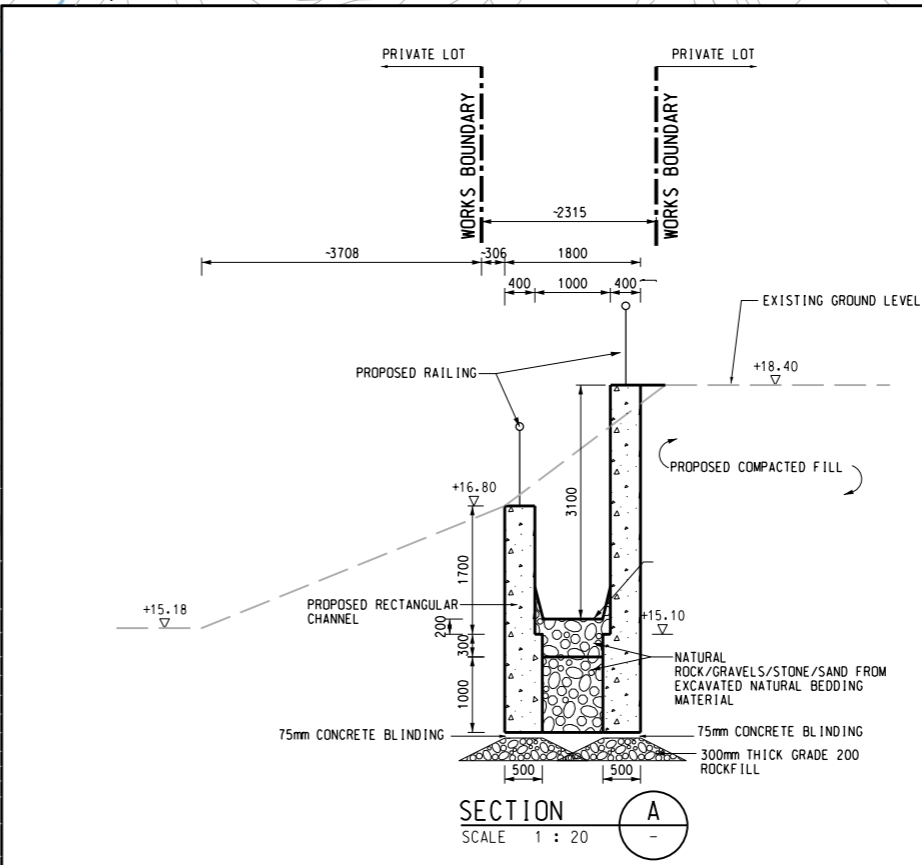
渠務署
Drainage Services Department
工程管理部
Project Management Division

Project Title:
**DRAINAGE IMPROVEMENT WORKS
IN YUEN LONG STAGE 1 - INVESTIGATION,
DESIGN AND CONSTRUCTION
CE 22/2013 (DS)**

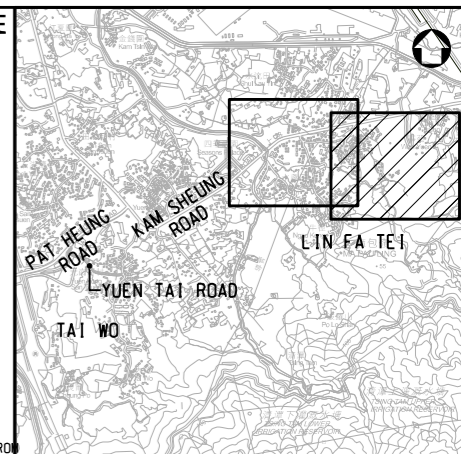
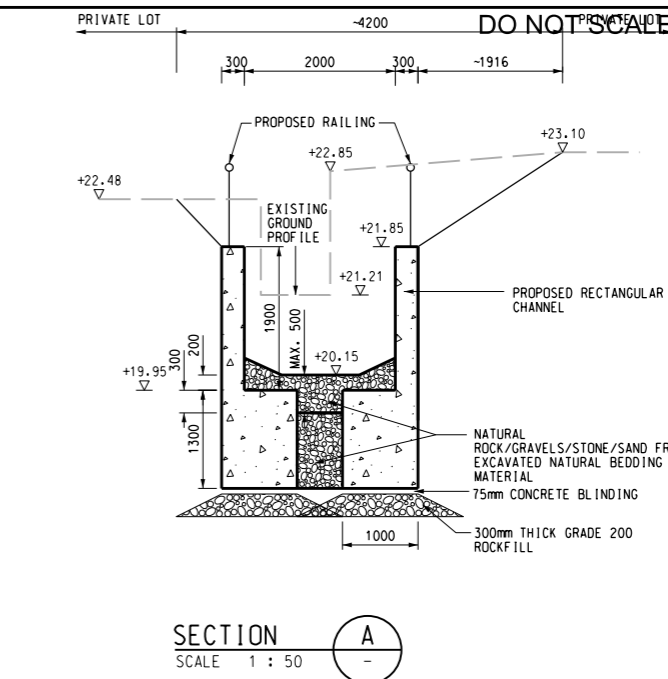
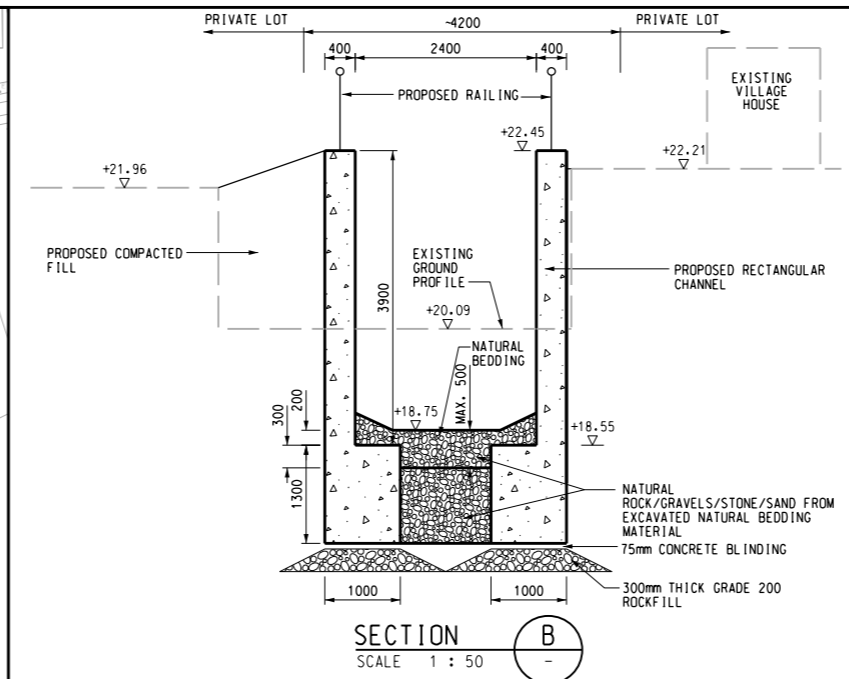
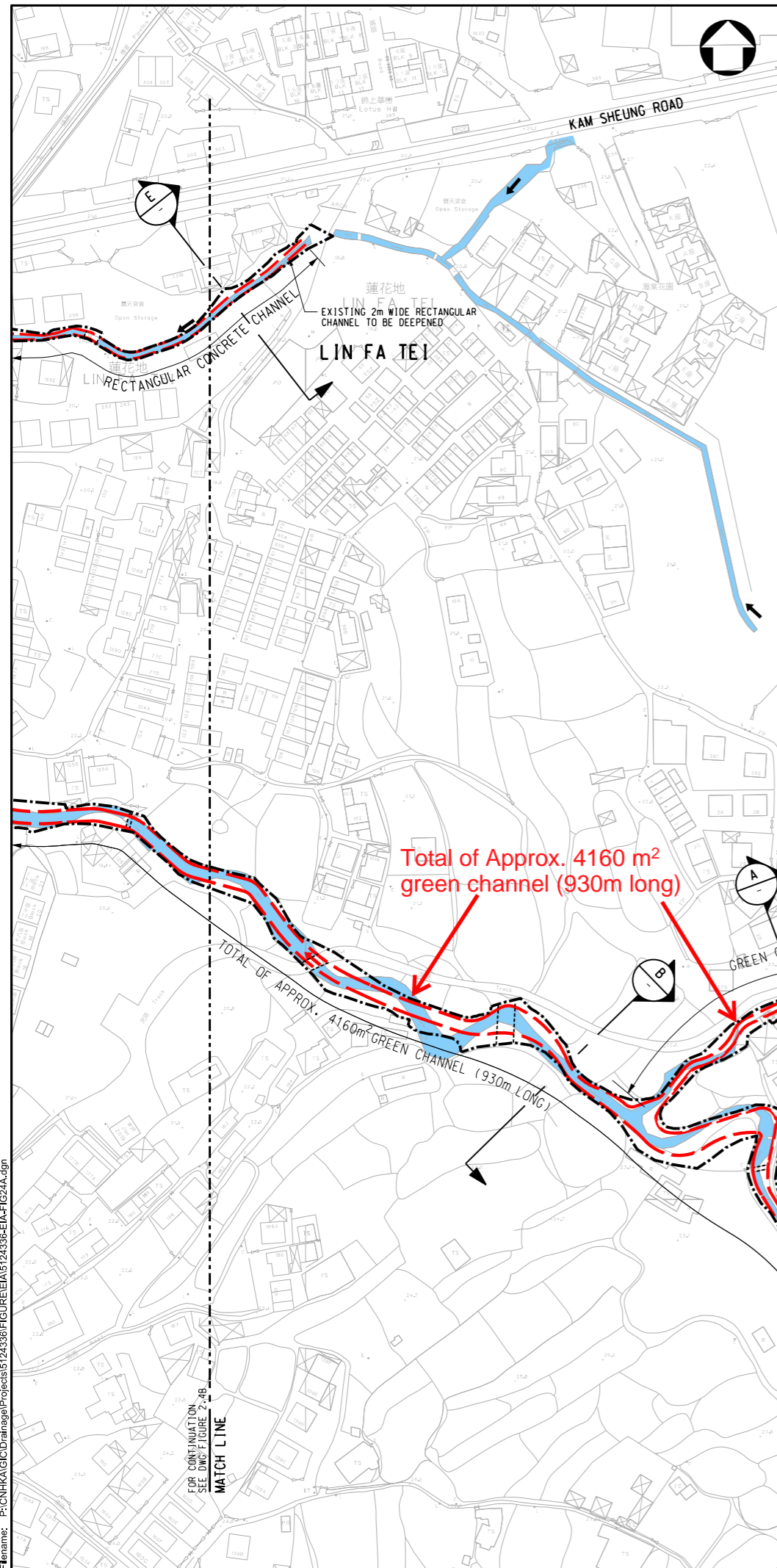
Drawing Title:
**PROPOSED DRAINAGE IMPROVEMENT
WORKS AT TAI WO**

Scale	Designed	Drawn	Checked	Authorised
AS SHOWN	RC	AC	WW	WW
Original Size	Date	Date	Date	Date
A3	OCT 2015	OCT 2015	OCT 2015	OCT 2015

Drawing Number: **FIGURE 2.3** Revision: **E**



User name: CHEU8306 Date: 1/10/2021 Time: 11:02:51 PM
Filename: P:\CNHKA\IC\Drainage\Projects\5124336\FIGURE\E\A5\24336-EIA-FIG23.dgn



KEY PLAN
N.T.S.

NOTES:
1. FOR KEY PLAN REFER TO FIGURE 2.1.

- LEGEND:**
- SITE BOUNDARY
 - PROPOSED RECTANGULAR CHANNEL
 - PROPOSED CHANNEL CROSSING
 - EXISTING STREAM

Rev.	Date	Description	By	Chkd	App'd
D	DEC 20	FIFTH ISSUE	WSL	WWCT	WKML
C	JAN 20	FOURTH ISSUE	WSL	WWCT	WKML
B	SEP 19	THIRD ISSUE	WSL	WWCT	WKML
A	SEP 16	SECOND ISSUE	WSL	RWKC	JEC
-	OCT 15	FIRST ISSUE	RC	WW	WW

Drawing Status: **DETAILED DESIGN**



渠務署
Drainage Services Department

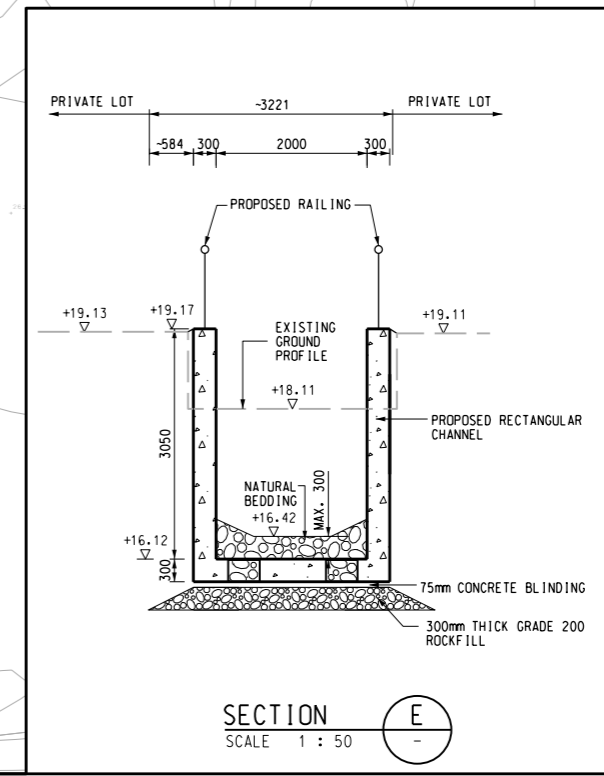
工程管理部
Project Management Division

Project Title:
**DRAINAGE IMPROVEMENT WORKS
IN YUEN LONG STAGE 1 - INVESTIGATION,
DESIGN AND CONSTRUCTION
CE 22/2013 (DS)**

Drawing Title:
**PROPOSED DRAINAGE IMPROVEMENT
WORKS AT LIN FA TEI (SHEET 1 OF 2)**

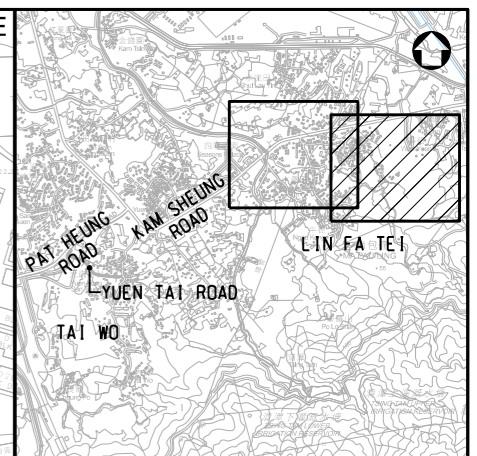
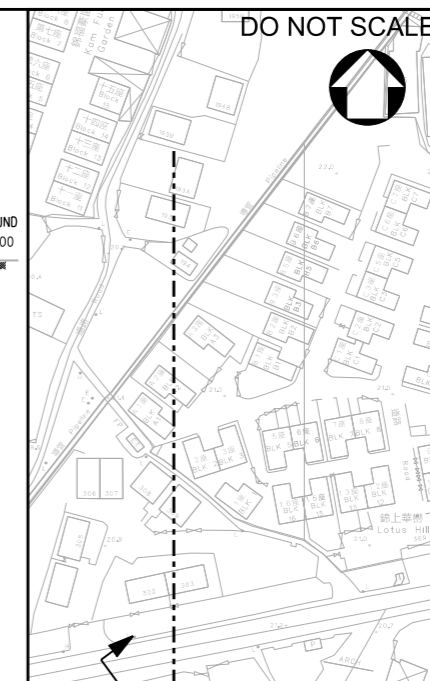
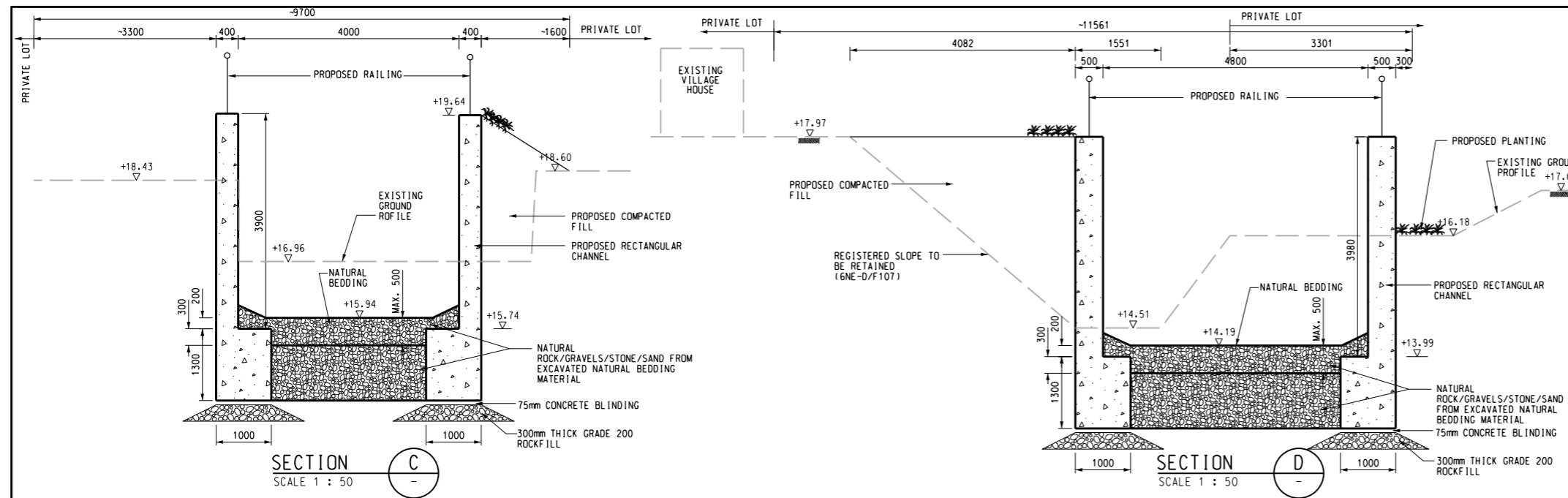
Scale	Designed	Drawn	Checked	Authorised
AS SHOWN	RC	AC	WW	WW
Original Size	Date	Date	Date	Date
A3	OCT 2015	OCT 2015	OCT 2015	OCT 2015

Drawing Number: **FIGURE 2.4A** Revision: **D**



SECTION E
SCALE 1 : 50

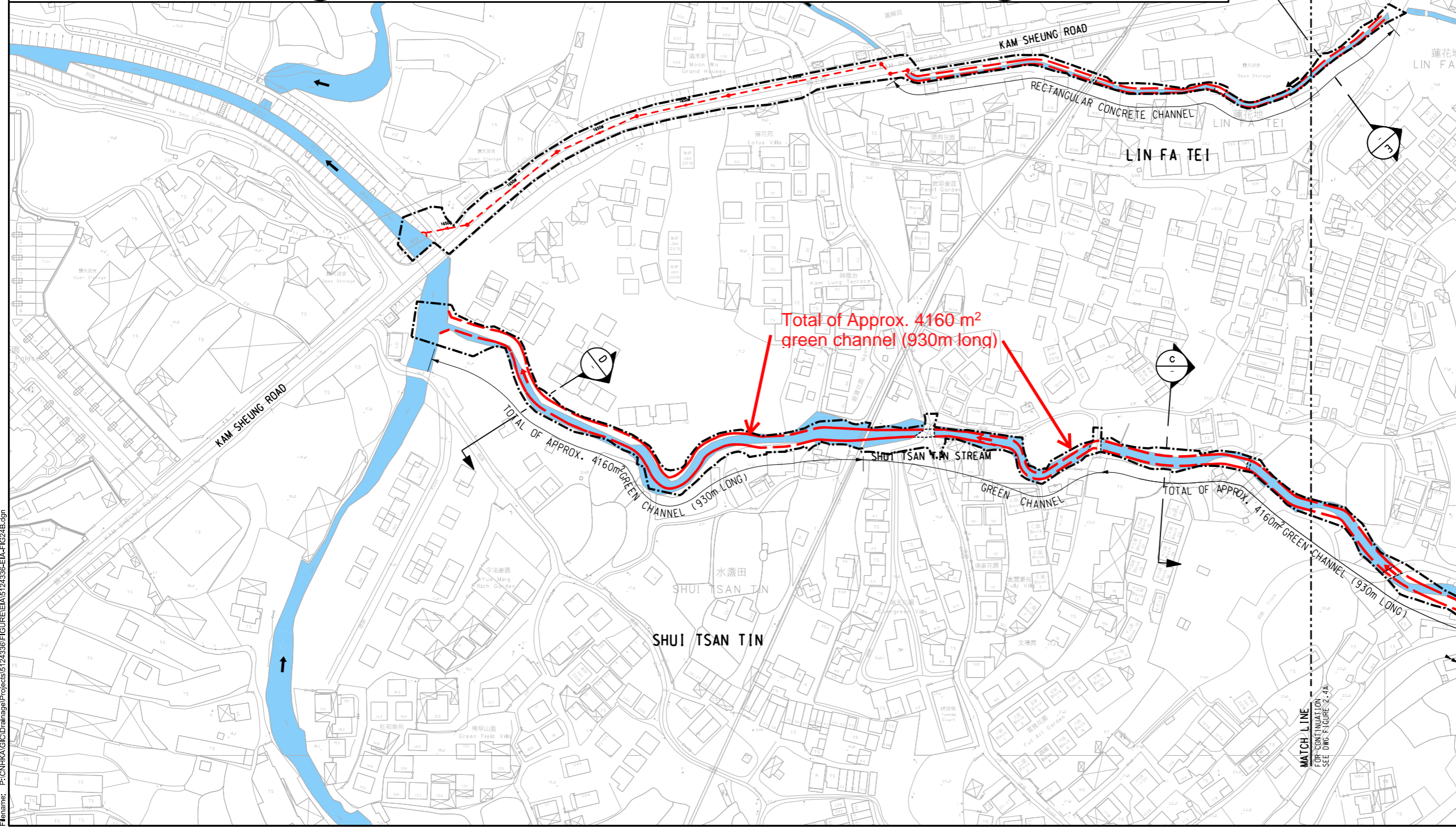
User name: CHEU8306 Date: 14/10/2015 Time: 11:02:08 PM
Filename: P:\CN\KAL\Drainage\Projects\5124336\FIGURE\E\A5124336-EIA-FIG24A.dgn



KEY PLAN
N.T.S.

NOTES:
1. FOR KEY PLAN REFER TO FIGURE 2.1.

- LEGEND:**
- SITE BOUNDARY
 - PROPOSED RECTANGULAR CHANNEL
 - PROPOSED DRAINAGE PIPE
 - PROPOSED MANHOLE
 - PROPOSED CHANNEL CROSSING
 - EXISTING STREAM



Rev.	Date	Description	By	Chkd	App'd
D	DEC 20	FIFTH ISSUE	WSL	WWCT	WKML
C	JAN 20	FOURTH ISSUE	WSL	WWCT	WKML
B	SEP 19	THIRD ISSUE	WSL	WWCT	WKML
A	SEP 16	SECOND ISSUE	WSL	RWKC	JEC
-	OCT 15	FIRST ISSUE	RC	WW	WW

Drawing Status: **DETAILED DESIGN**



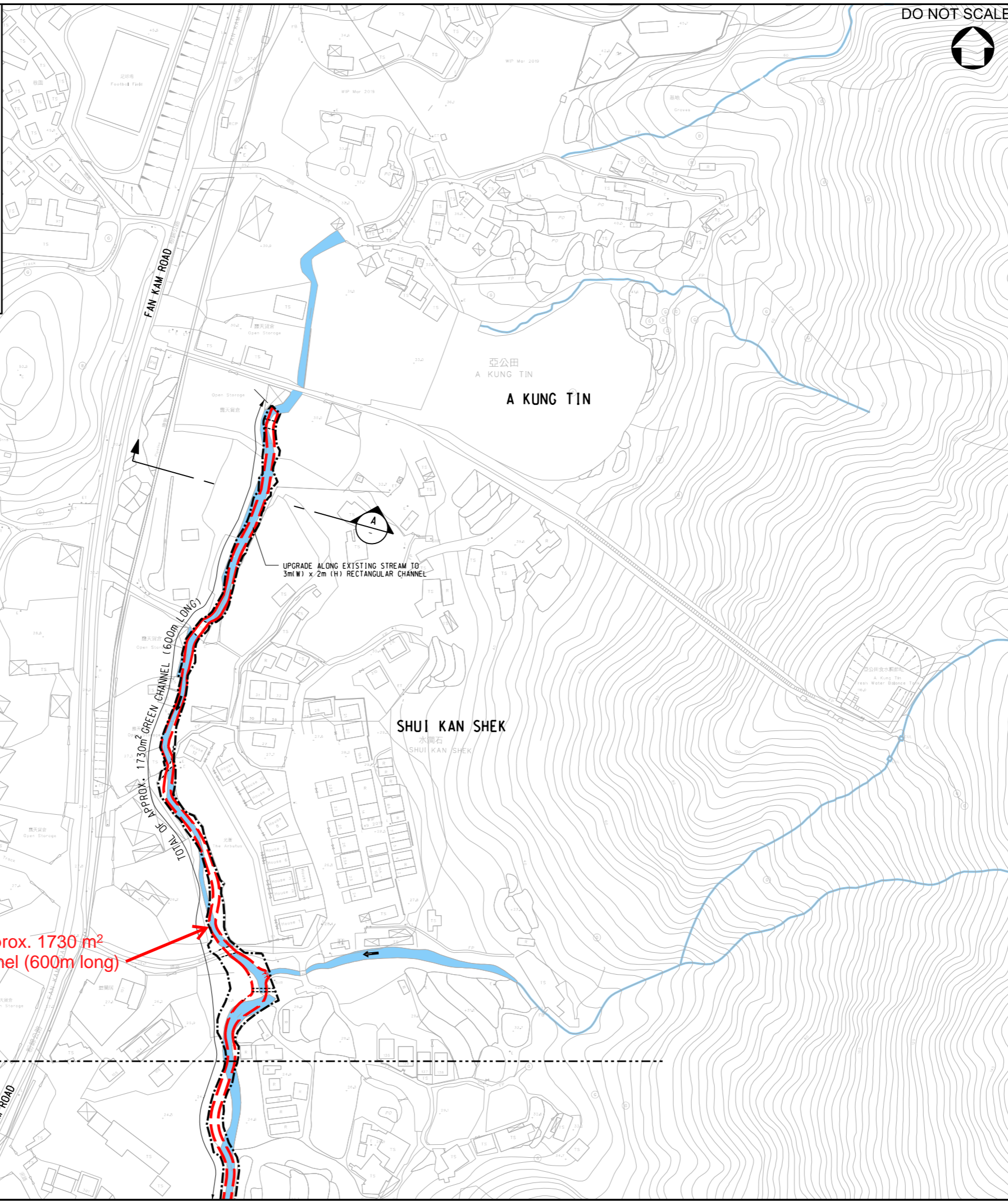
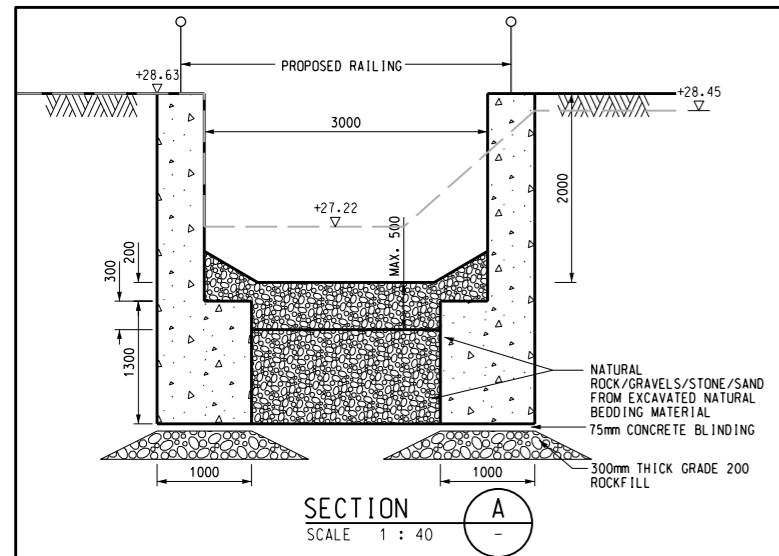
渠務署
Drainage Services Department
工程管理部
Project Management Division

Project Title:
**DRAINAGE IMPROVEMENT WORKS
IN YUEN LONG STAGE 1 - INVESTIGATION,
DESIGN AND CONSTRUCTION
CE 22/2013 (DS)**

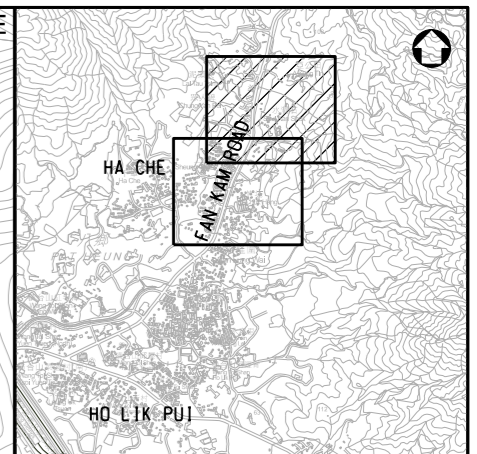
Drawing Title:
**PROPOSED DRAINAGE IMPROVEMENT
WORKS AT LIN FA TEI (SHEET 2 OF 2)**

Scale	Designed	Drawn	Checked	Authorised
1:2000	RC	AC	WW	WW
Original Size	Date	Date	Date	Date
A3	OCT 2015	OCT 2015	OCT 2015	OCT 2015
Drawing Number				Revision
FIGURE 2.4B				D

User name: CHEU8306 Date: 14/10/2021 Time: 11:04:48 PM
Filename: P:\CN\KAL\CD\Drainage\Projects\5124336\FIGURE\EIA\5124336-EIA-FIG24B.dgn



DO NOT SCALE



- NOTES:**
1. FOR KEY PLAN REFER TO FIGURE 2.1.
- LEGEND:**
- SITE BOUNDARY
 - PROPOSED RECTANGULAR CHANNEL
 - - - PROPOSED CHANNEL CROSSING
 - EXISTING STREAM

Rev.	Date	Description	By	Chkd	App'd
D	DEC 20	FIFTH ISSUE	WSL	WWCT	WKML
C	JAN 20	FOURTH ISSUE	WSL	WWCT	WKML
B	SEP 19	THIRD ISSUE	WSL	WWCT	WKML
A	SEP 16	SECOND ISSUE	WSL	RWKC	JEC
-	OCT 15	FIRST ISSUE	RC	WW	WW

Drawing Status: **DETAILED DESIGN**



渠務署
Drainage Services Department

工程管理部
Project Management Division

Project Title:
**DRAINAGE IMPROVEMENT WORKS
IN YUEN LONG STAGE 1 - INVESTIGATION,
DESIGN AND CONSTRUCTION
CE 22/2013 (DS)**

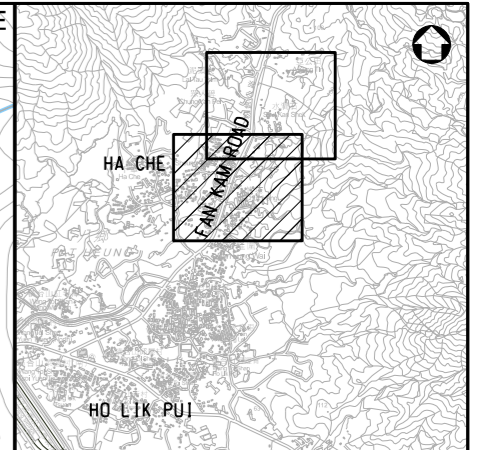
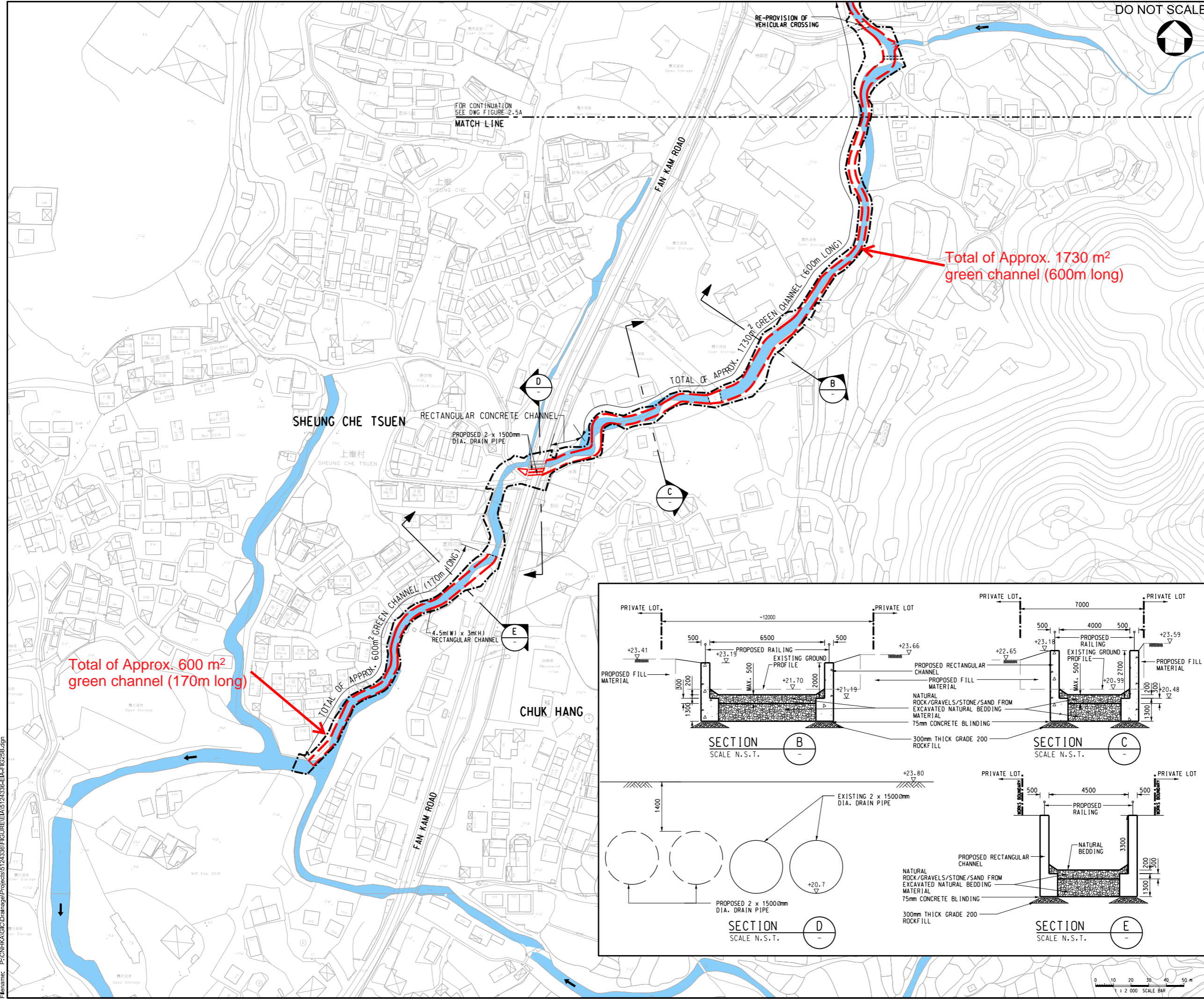
Drawing Title:
**PROPOSED DRAINAGE IMPROVEMENT
WORKS AT HA CHE (SHEET 1 OF 2)**

Scale	Designed	Drawn	Checked	Authorised
1 : 2000	RC	AC	WW	WW
Original Size	Date	Date	Date	Date
A3	OCT 2015	OCT 2015	OCT 2015	OCT 2015

Drawing Number: **FIGURE 2.5A** Revision: **D**

Total of Approx. 1730 m²
green channel (600m long)

User name: CHEUB306 Date: 14/10/2021 Time: 11:06:00 PM
Filename: P:\CN\KAL\CD\Drainage\Projects\5124336\FIGURE\EA\5124336-EA-FIG25A.dgn



KEY PLAN
N.T.S.

NOTES:
1. FOR KEY PLAN REFER TO FIGURE 2.1.

- LEGEND:**
- SITE BOUNDARY
 - PROPOSED RECTANGULAR CHANNEL
 - PROPOSED CHANNEL CROSSING
 - EXISTING STREAM

Rev.	Date	Description	By	Chkd	App'd
D	MAY 20	FIFTH ISSUE	WSL	WWCT	WKML
C	JAN 20	FOURTH ISSUE	WSL	WWCT	WKML
B	SEP 19	THIRD ISSUE	WSL	WWCT	WKML
A	SEP 16	SECOND ISSUE	WSL	RWKC	JEC
-	OCT 15	FIRST ISSUE	RC	WW	WW

Drawing Status: **DETAILED DESIGN**



渠務署
Drainage Services Department

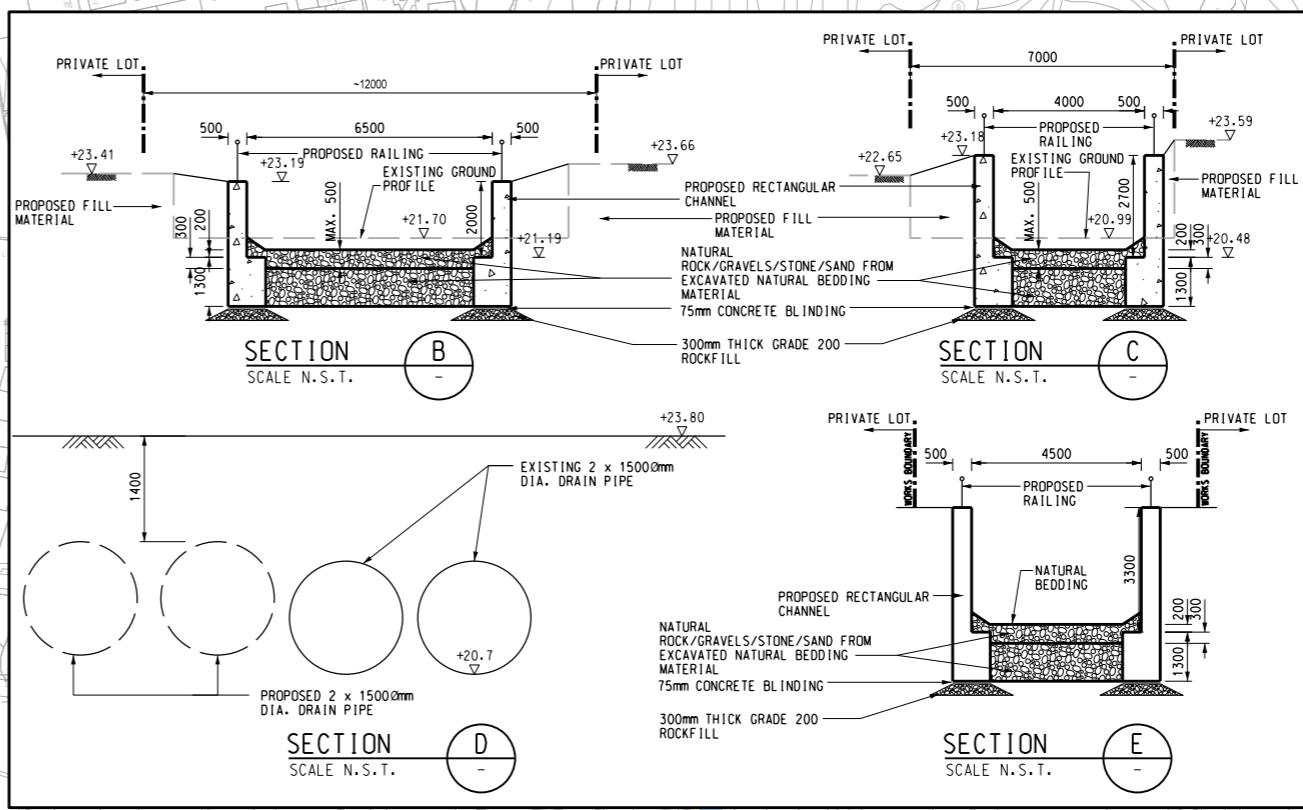
工程管理部
Project Management Division

DRAINAGE IMPROVEMENT WORKS
IN YUEN LONG STAGE 1 - INVESTIGATION,
DESIGN AND CONSTRUCTION
CE 22/2013 (DS)

PROPOSED DRAINAGE IMPROVEMENT
WORKS AT HA CHE (SHEET 2 OF 2)

Scale	Designed	Drawn	Checked	Authorised
1 : 2000	RC	AC	WW	WW
Original Size	Date	Date	Date	Date
A3	OCT 2015	OCT 2015	OCT 2015	OCT 2015

FIGURE 2.5B
D



User name: CHEUB006 Date: 14/10/2015 Time: 11:09:53 PM
Filename: P:\CN\KHA\GIS\Drainage\Projects\5124336\FIGURE\EIA\5124336-EIA-FIG25B.dgn