

KEY PLAN
N.T.S.

NOTES:
1. FOR KEY PLAN REFER TO FIGURE 2.1.

- LEGEND:
- SITE BOUNDARY
 - PROPOSED RECTANGULAR CHANNEL
 - PROPOSED CHANNEL CROSSING
 - EXISTING STREAM

Rev.	Date	Description	By	Chkd	App'd
D	DEC 20	FIFTH ISSUE	WSL	WWCT	WKML
C	JAN 20	FOURTH ISSUE	WSL	WWCT	WKML
B	SEP 19	THIRD ISSUE	WSL	WWCT	WKML
A	SEP 16	SECOND ISSUE	WSL	RWKC	JEC
-	OCT 15	FIRST ISSUE	RC	WW	WW

Drawing Status: **DETAILED DESIGN**

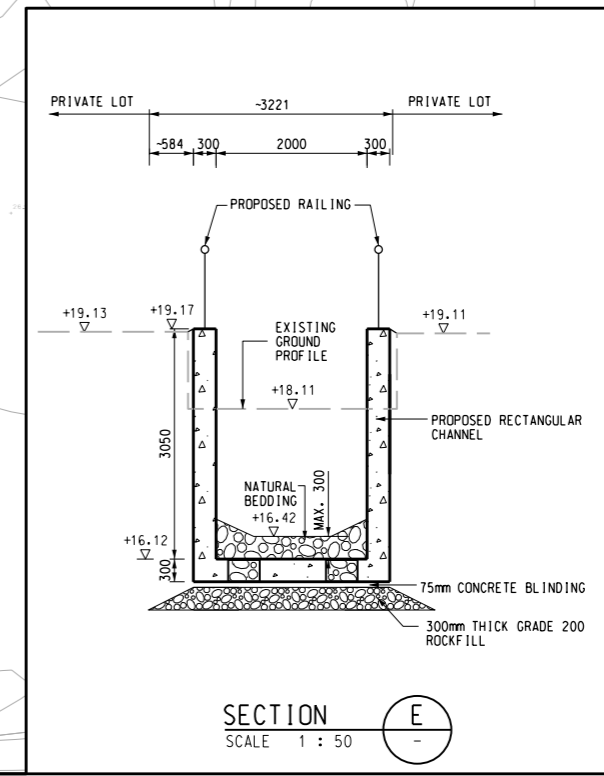


渠務署
Drainage Services Department
工程管理部
Project Management Division

Project Title:
DRAINAGE IMPROVEMENT WORKS
IN YUEN LONG STAGE 1 - INVESTIGATION,
DESIGN AND CONSTRUCTION
CE 22/2013 (DS)

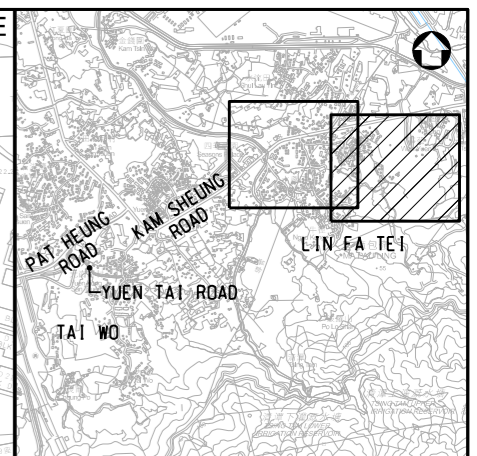
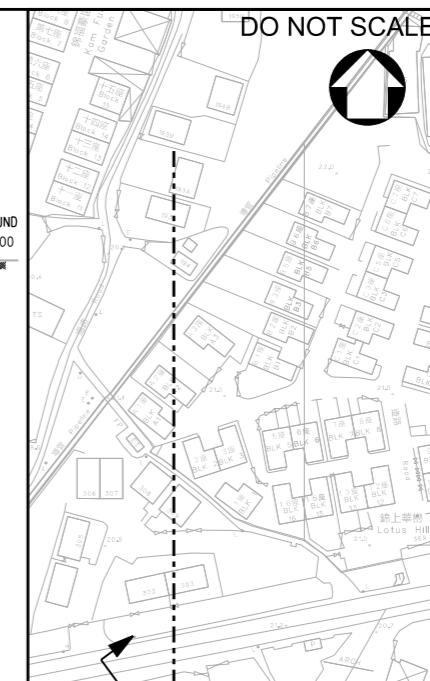
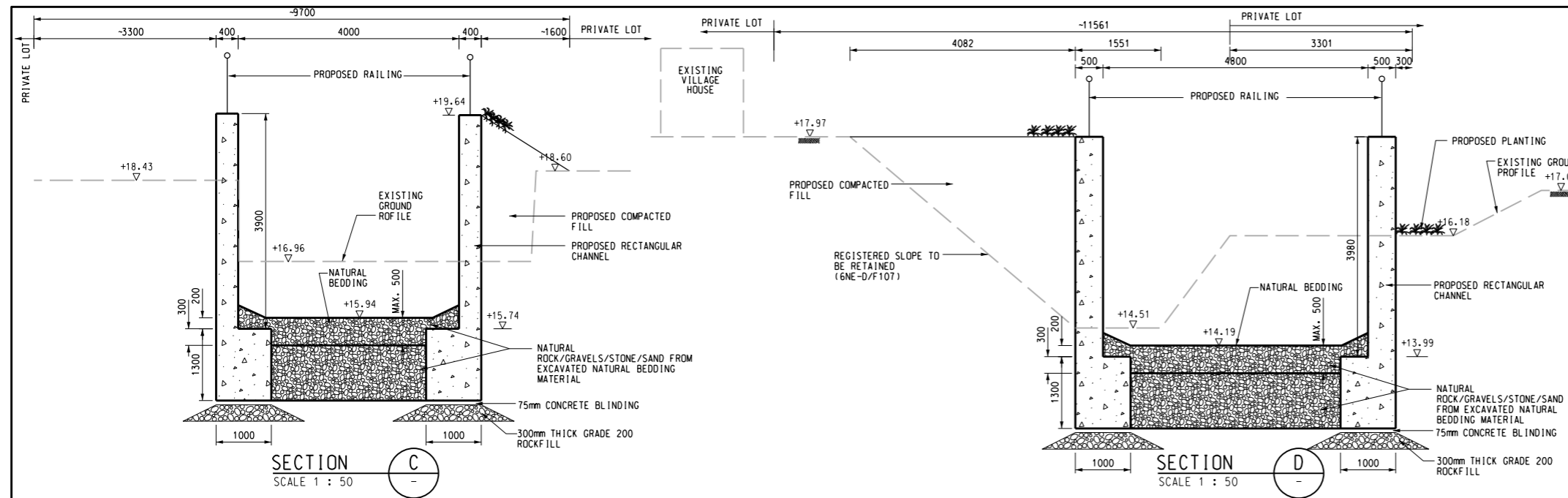
Drawing Title:
PROPOSED DRAINAGE IMPROVEMENT
WORKS AT LIN FA TEI (SHEET 1 OF 2)

Scale	Designed	Drawn	Checked	Authorised
AS SHOWN	RC	AC	WW	WW
Original Size	Date	Date	Date	Date
A3	OCT 2015	OCT 2015	OCT 2015	OCT 2015
Drawing Number	Revision			
FIGURE 2.4A				D



SECTION E
SCALE 1:50

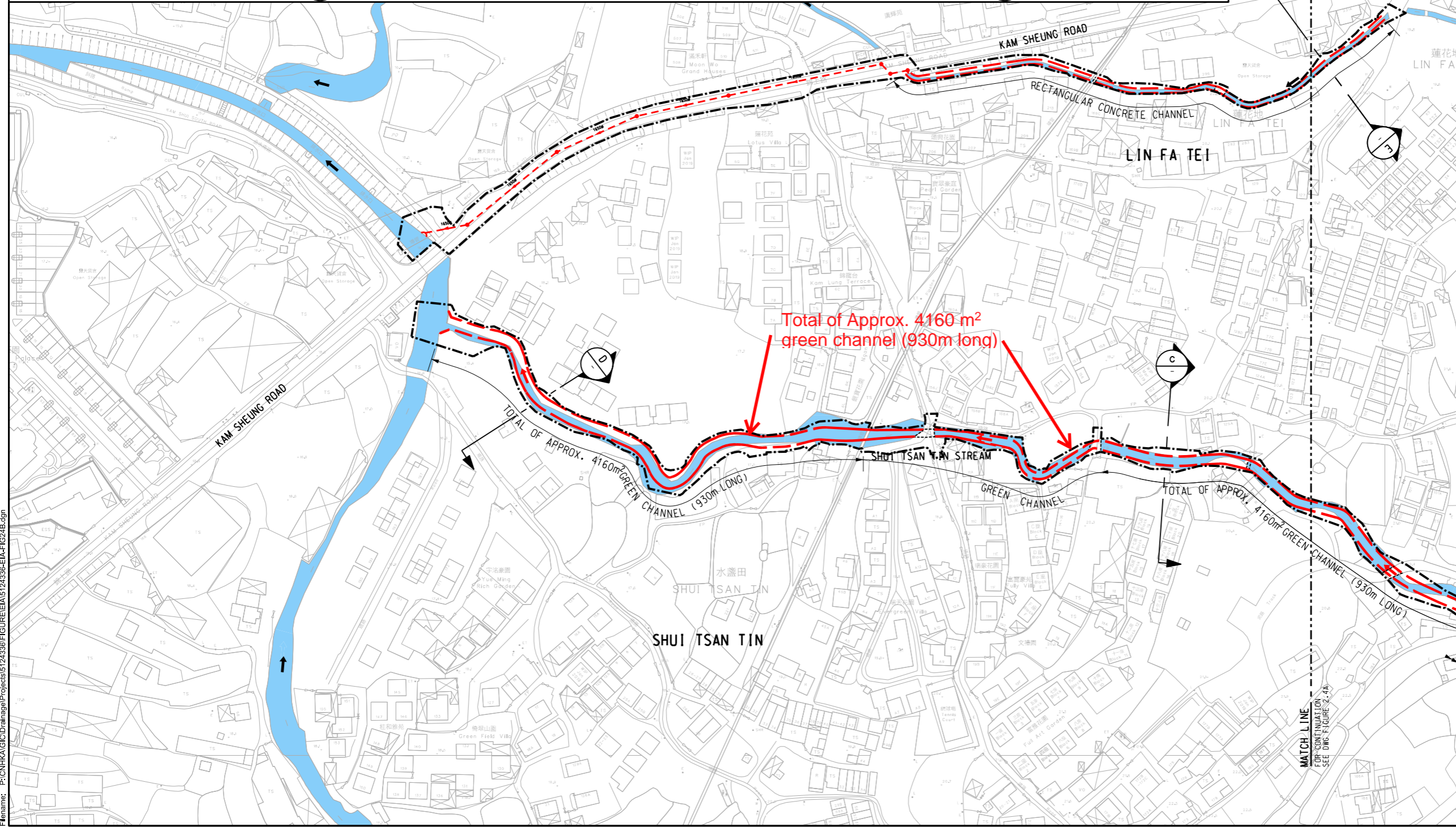
User name: CHEU8306 Date: 14/10/2015 Time: 11:02:08 PM
Filename: P:\CN\KAL\Drainage\Projects\5124336\FIGURE\E\A5124336-EIA-FIG24A.dgn



KEY PLAN
N.T.S.

NOTES:
1. FOR KEY PLAN REFER TO FIGURE 2.1.

- LEGEND:**
- SITE BOUNDARY
 - PROPOSED RECTANGULAR CHANNEL
 - - - PROPOSED DRAINAGE PIPE
 - PROPOSED MANHOLE
 - - - PROPOSED CHANNEL CROSSING
 - █ EXISTING STREAM



Rev.	Date	Description	By	Chkd	App'd
D	DEC 20	FIFTH ISSUE	WSL	WWCT	WKML
C	JAN 20	FOURTH ISSUE	WSL	WWCT	WKML
B	SEP 19	THIRD ISSUE	WSL	WWCT	WKML
A	SEP 16	SECOND ISSUE	WSL	RWKC	JEC
-	OCT 15	FIRST ISSUE	RC	WW	WW

Drawing Status: **DETAILED DESIGN**



渠務署
Drainage Services Department
工程管理部
Project Management Division

Project Title:
**DRAINAGE IMPROVEMENT WORKS
IN YUEN LONG STAGE 1 - INVESTIGATION,
DESIGN AND CONSTRUCTION
CE 22/2013 (DS)**

Drawing Title:
**PROPOSED DRAINAGE IMPROVEMENT
WORKS AT LIN FA TEI (SHEET 2 OF 2)**

Scale	Designed	Drawn	Checked	Authorised
1:2000	RC	AC	WW	WW
Original Size	Date	Date	Date	Date
A3	OCT 2015	OCT 2015	OCT 2015	OCT 2015
Drawing Number	Revision			
FIGURE 2.4B				D

User name: CHEU8306 Date: 14/10/2021 Time: 11:04:48 PM
Filename: P:\CN\KAL\CD\Drainage\Projects\5124336\FIGURE\EIA\5124336-EIA-FIG24B.dgn