

KEY PLAN
N.T.S.

NOTES:
1. FOR KEY PLAN REFER TO FIGURE 2.1.

- LEGEND:
- SITE BOUNDARY
 - PROPOSED RECTANGULAR CHANNEL
 - PROPOSED CHANNEL CROSSING
 - EXISTING STREAM

Rev.	Date	Description	By	Chkd	App'd
D	DEC 20	FIFTH ISSUE	WSL	WWCT	WKML
C	JAN 20	FOURTH ISSUE	WSL	WWCT	WKML
B	SEP 19	THIRD ISSUE	WSL	WWCT	WKML
A	SEP 16	SECOND ISSUE	WSL	RWKC	JEC
-	OCT 15	FIRST ISSUE	RC	WW	WW

Drawing Status: **DETAILED DESIGN**



渠務署
Drainage Services Department

工程管理部
Project Management Division

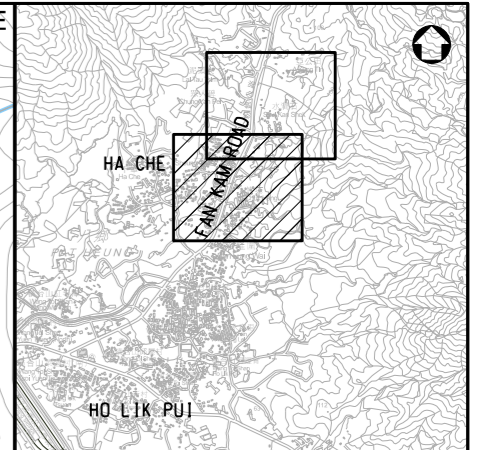
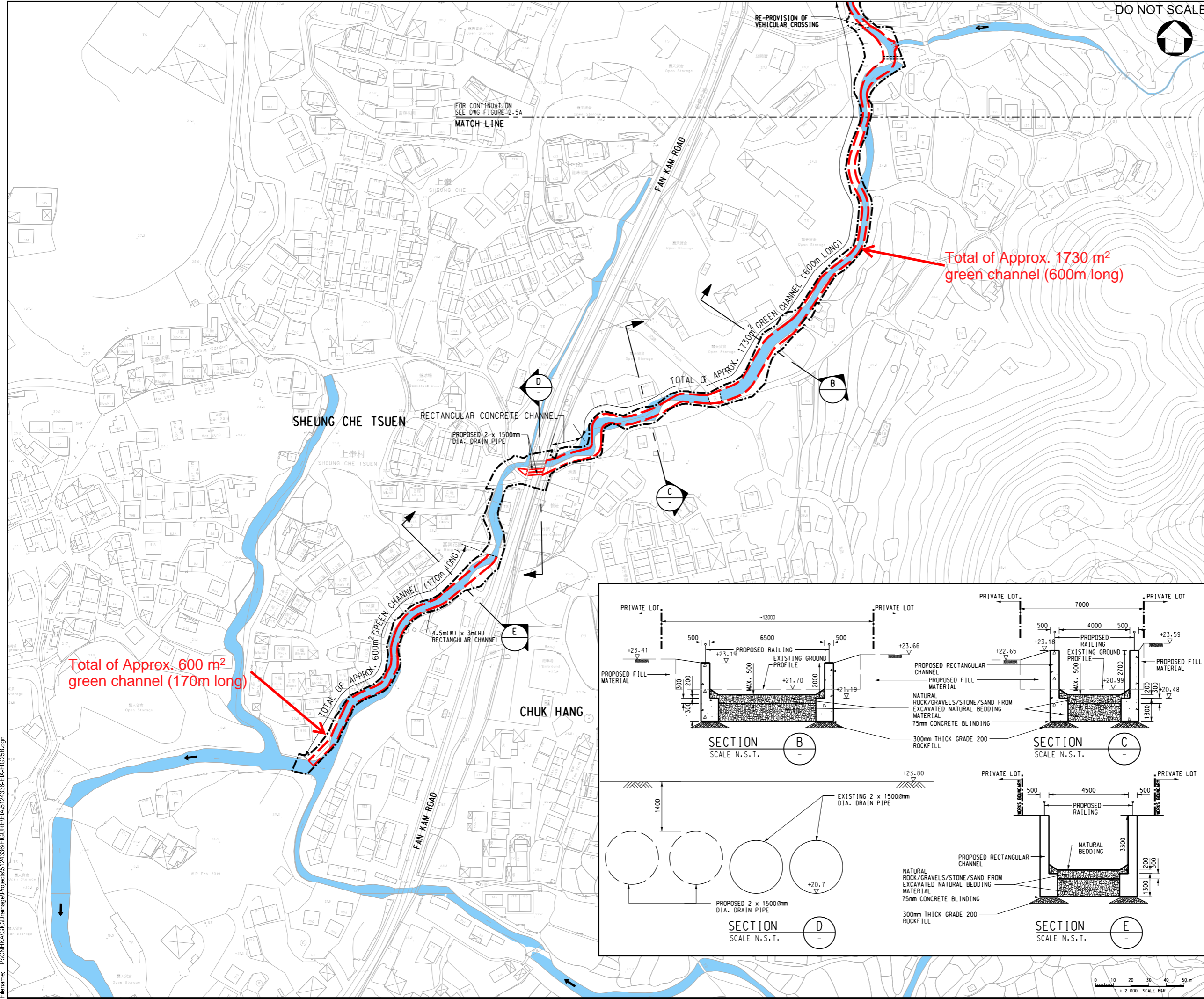
Project Title:
**DRAINAGE IMPROVEMENT WORKS
IN YUEN LONG STAGE 1 - INVESTIGATION,
DESIGN AND CONSTRUCTION
CE 22/2013 (DS)**

Drawing Title:
**PROPOSED DRAINAGE IMPROVEMENT
WORKS AT HA CHE (SHEET 1 OF 2)**

Scale	Designed	Drawn	Checked	Authorised
1:2000	RC	AC	WW	WW
Original Size	Date	Date	Date	Date
A3	OCT 2015	OCT 2015	OCT 2015	OCT 2015

Drawing Number: **FIGURE 2.5A** Revision: **D**

User name: CHEU8306 Date: 14/10/2021 Time: 11:06:00 PM
Filename: P:\CN\KAL\Drainage\Projects\5124336\FIGURE\EA\5124336-EA-FIG25A.dgn



KEY PLAN
N.T.S.

NOTES:
1. FOR KEY PLAN REFER TO FIGURE 2.1.

- LEGEND:**
- SITE BOUNDARY
 - PROPOSED RECTANGULAR CHANNEL
 - PROPOSED CHANNEL CROSSING
 - EXISTING STREAM

Rev.	Date	Description	By	Chkd	App'd
D	MAY 20	FIFTH ISSUE	WSL	WWCT	WKML
C	JAN 20	FOURTH ISSUE	WSL	WWCT	WKML
B	SEP 19	THIRD ISSUE	WSL	WWCT	WKML
A	SEP 16	SECOND ISSUE	WSL	RWKC	JEC
-	OCT 15	FIRST ISSUE	RC	WW	WW

Drawing Status: **DETAILED DESIGN**



渠務署
Drainage Services Department

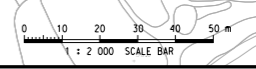
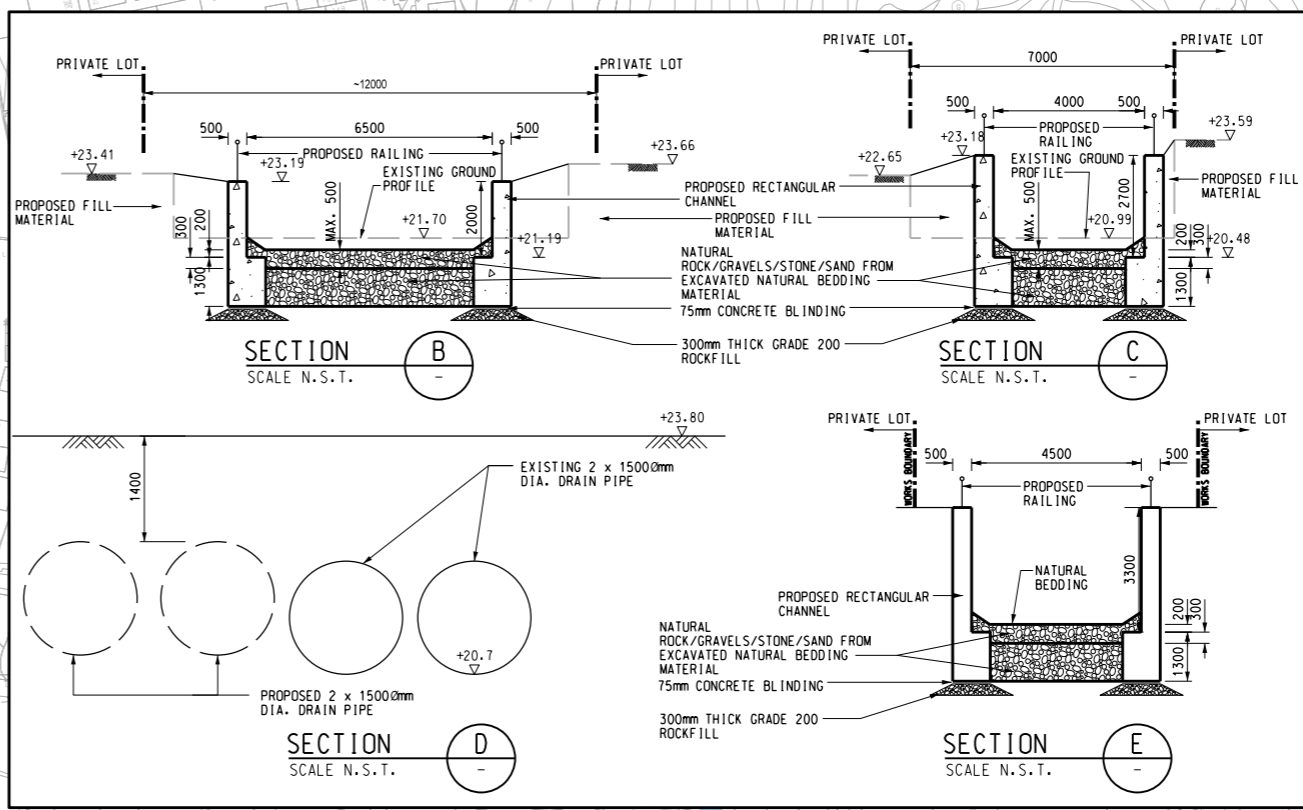
工程管理部
Project Management Division

DRAINAGE IMPROVEMENT WORKS
IN YUEN LONG STAGE 1 - INVESTIGATION,
DESIGN AND CONSTRUCTION
CE 22/2013 (DS)

PROPOSED DRAINAGE IMPROVEMENT
WORKS AT HA CHE (SHEET 2 OF 2)

Scale	Designed	Drawn	Checked	Authorised
1 : 2000	RC	AC	WW	WW
Original Size	Date	Date	Date	Date
A3	OCT 2015	OCT 2015	OCT 2015	OCT 2015

Drawing Number: **FIGURE 2.5B** Revision: **D**



User name: CHEUB06 Date: 14/10/2015 Time: 11:09:53 PM
Filename: P:\CN\KHA\GIS\Drainage\Projects\5124336\FIGURE\EIA\5124336-EIA-FIG25B.dgn