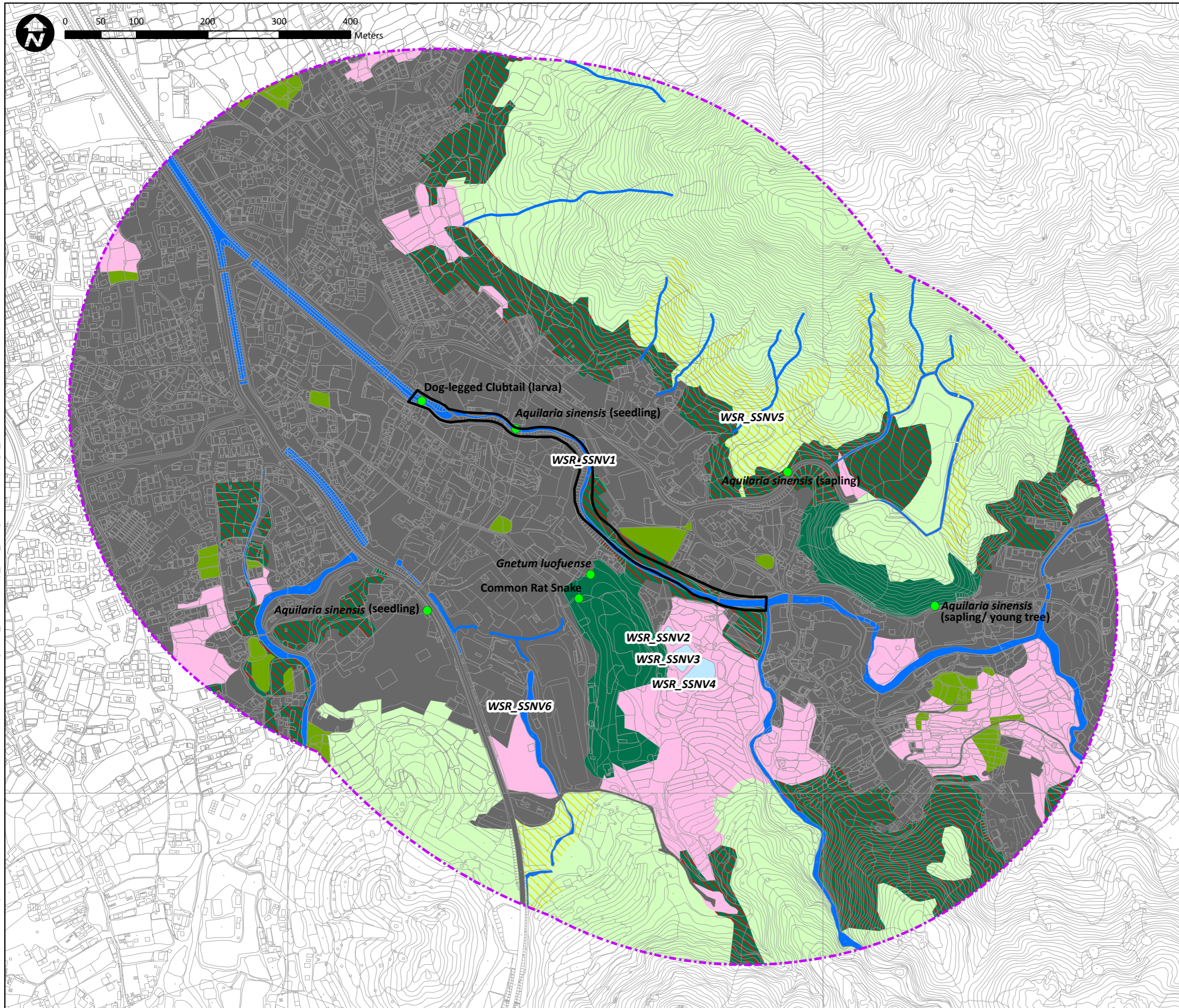


Document Path: D:\Project\CE222013(DS) PER and EIA\Info\GIS files\mxd\Figure5_habitatmap_SCS_SungShanNewVillage_20181002.mxd



● Species of Conservation Concern

▭ Work Limit Boundary

▭ 500m Study Area

Habitat

- Agricultural Land
- Pond
- Watercourse
- Grassland
- Grassland/Shrubland
- Secondary Woodland
- Plantation
- Waste Ground
- Urban/Residential Area

Dog-legged Clubtail (larva)

Aquilaria sinensis (seedling)

Aquilaria sinensis (sapling)

Aquilaria sinensis (seedling)

Aquilaria sinensis (sapling/ young tree)

Gnetum luofuense

Common Rat Snake

WSR_SSNV1

WSR_SSNV2

WSR_SSNV3

WSR_SSNV4

WSR_SSNV5

WSR_SSNV6



Project Title:
Agreement No. CE 22/2013 (DS)
Drainage Improvement Works in Yuen Long, Stage 1
Investigation, Design and Construction

Figure Title:
Water Sensitive Receivers
At Sung Shan New Village

Drawn by:	ST	Scale:	1:4,980 on A3
Checked By:	EL	Date:	Sep 2019
Approved by:	JC		
Figure Number:	Figure 6.1		Revision: 2