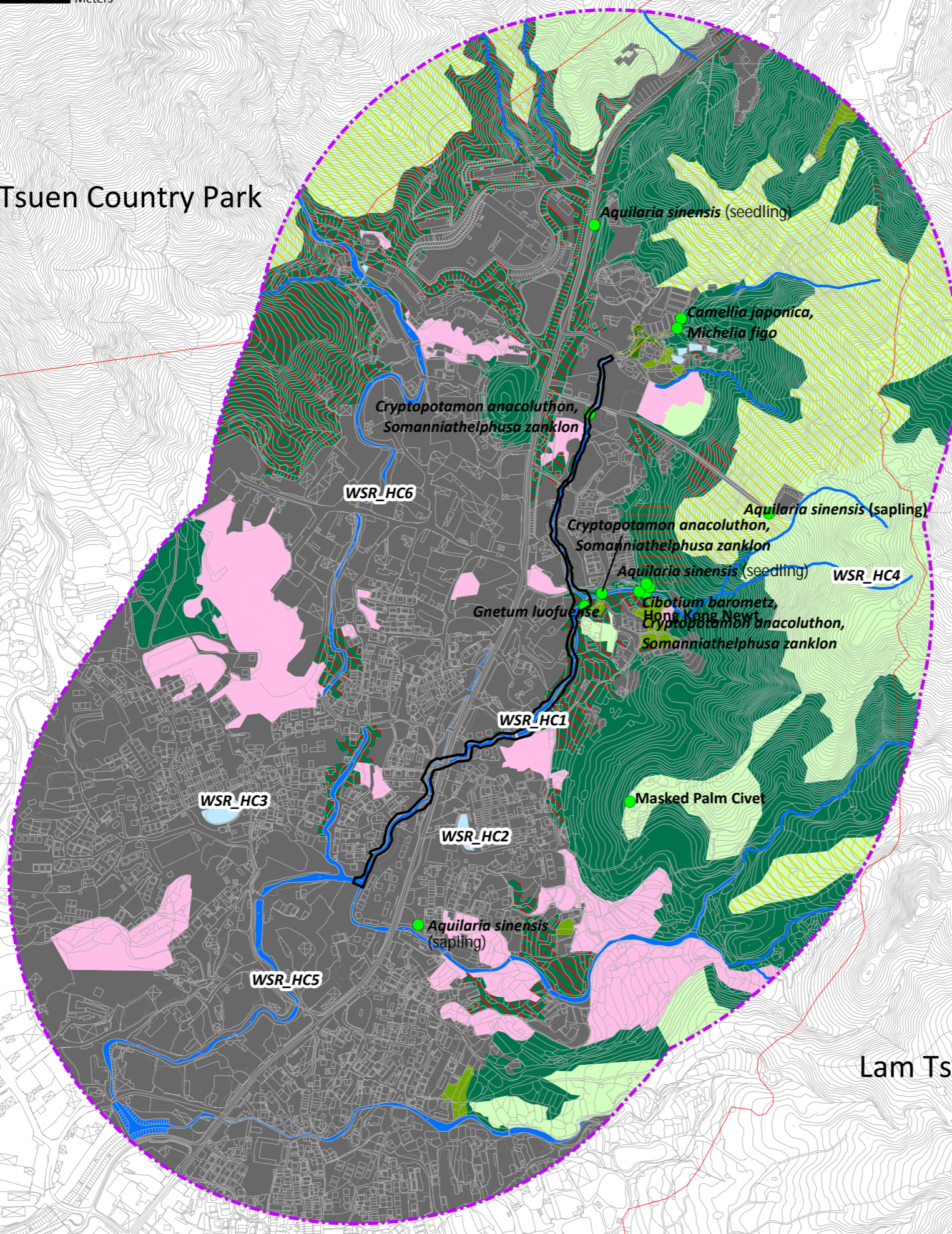




Lam Tsuen Country Park



- Species of Conservation Concern
- 500m Study Area
- Work Limit Boundary
- Agricultural Land
- Pond
- Watercourse
- Grassland
- Grassland/Shrubland
- Secondary Woodland
- Fung Shui Wood
- Orchard
- Plantation
- Waste Ground
- Urban/Residential Area
- Lam Tsuen Country Park Boundary

Document Path: D:\Project\CE222013(DS) PER and EIA\Info\GIS files\mxd\Figure8ab\_habitatmap\_SCS\_HaChe\_20181002.mxd



Project Title:  
**Agreement No. CE 22/2013 (DS)**  
**Drainage Improvement Works in Yuen Long, Stage 1**  
**Investigation, Design and Construction**

Figure Title:  
**Water Sensitive Receivers**  
**At Ha Che**

Drawn by:	ST	Scale:	1:6,820 on A3
Checked By:	EL	Date:	Oct 2018
Approved by:	JC		
Figure Number:	Figure 6.4		Revision: 1