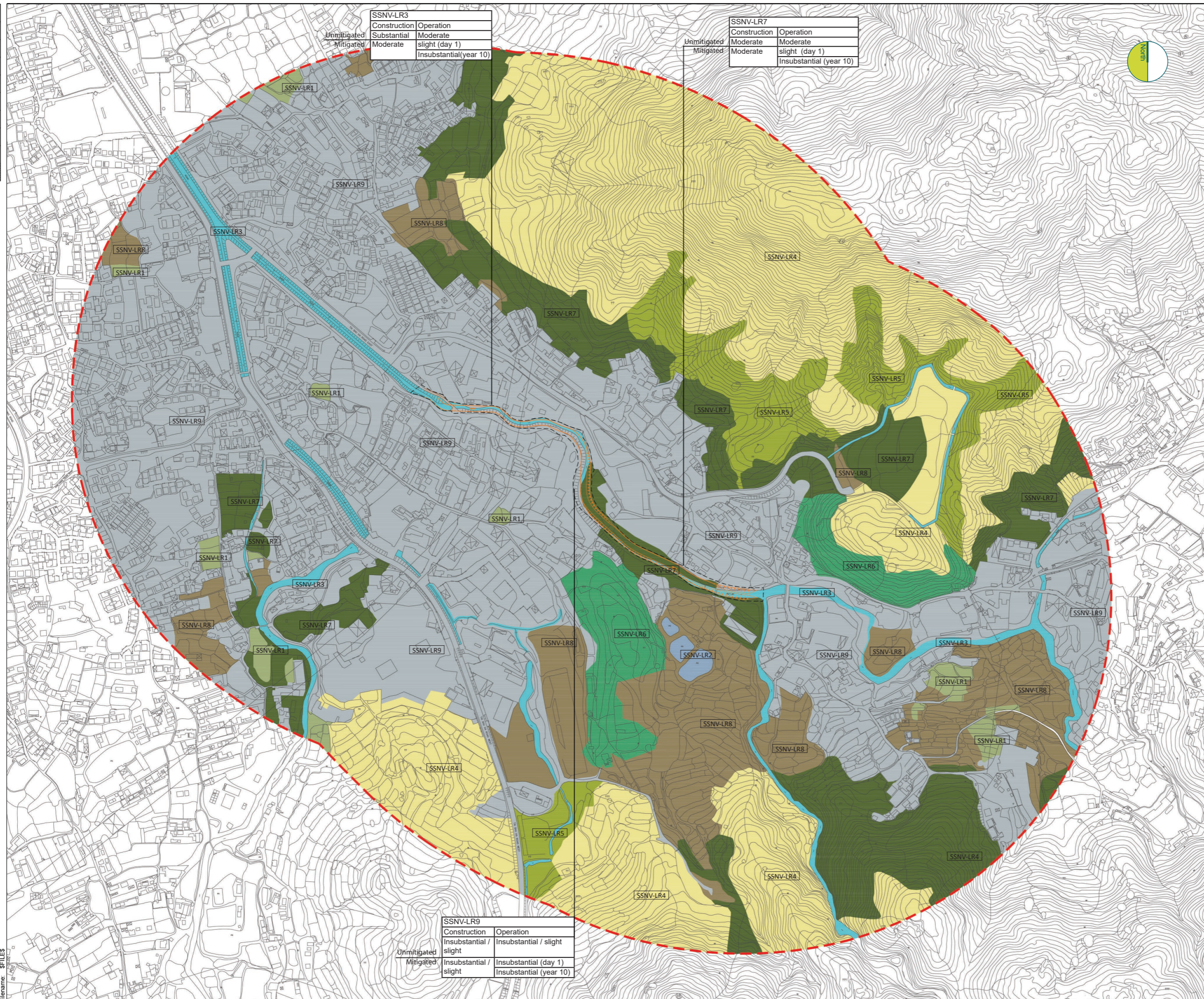


100  
0 10  
Millimetres

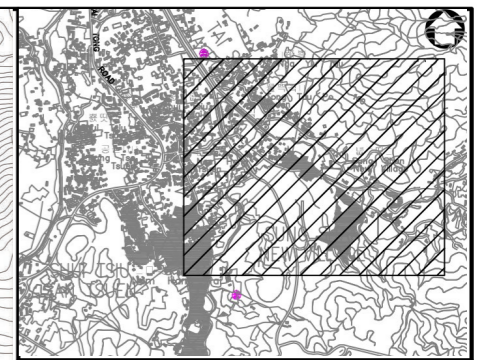
User name: \$USER\$NAME\$ Date: \$DATE\$ Time: \$TIME\$  
Filename: \$FILE\$



	SSNV-LR3	
	Construction	Operation
Unmitigated	Substantial	Moderate
Mitigated	Moderate	slight (day 1) Insubstantial(year 10)

	SSNV-LR7	
	Construction	Operation
Unmitigated	Moderate	Moderate
Mitigated	Moderate	slight (day 1) Insubstantial (year 10)

	SSNV-LR9	
	Construction	Operation
Unmitigated	Insubstantial / slight	Insubstantial / slight
Mitigated	Insubstantial / slight	Insubstantial (day 1) Insubstantial (year 10)



**KEY PLAN**  
N.T.S.

**Legend**

- Work Limit Boundary
- 500M Study Area
- Proposed Drainage Works

**Landscape Resources**

- SSNV-LR1 Agricultural Land
- SSNV-LR2 Pond
- SSNV-LR3 Water Course
- SSNV-LR4 Grassland
- SSNV-LR5 Grassland / Shrubland
- SSNV-LR6 Secondary Woodland
- SSNV-LR7 Plantation
- SSNV-LR8 Waste Ground
- SSNV-LR9 Urban / Residential Area

	Landscape Impacts	
	Construction	Operation
Unmitigated	No Impact	Slight
Mitigated	Substantial	Moderate (day 1) Moderate (year 10)

Drawing Status	<b>DESIGN</b>	Suitability	-
----------------	---------------	-------------	---

**SCENIC landscape studio limited**  
Rm. 2004, QRC, 299 Queens Road Central, Hong Kong  
Telephone: +852 2468 2422 Fax: +852 3016 2422  
Email: scenic@studioscenic.com

**ATKINS**

渠務署  
Drainage Services Department

工程管理部  
**Project Management Division**

Project Title  
**CONTRACT NO. PM 10/2014  
DRAINAGE IMPROVEMENT WORKS  
IN YUEN LONG, STAGE 1**

Drawing Title  
**Residual Impact on Landscape Resources during  
Construction and Operation  
- Sung Shan New Village**

Scale	1:5000	Designed	-	Drawn	GZ	Checked	JBC	Authorised	-	
Original Size	A3	Date	Jan 2016	Date	Jan 2016	Date	Jan 2016	Date	Jan 2016	
Drawing Number	Figure 9.17								Revision	-