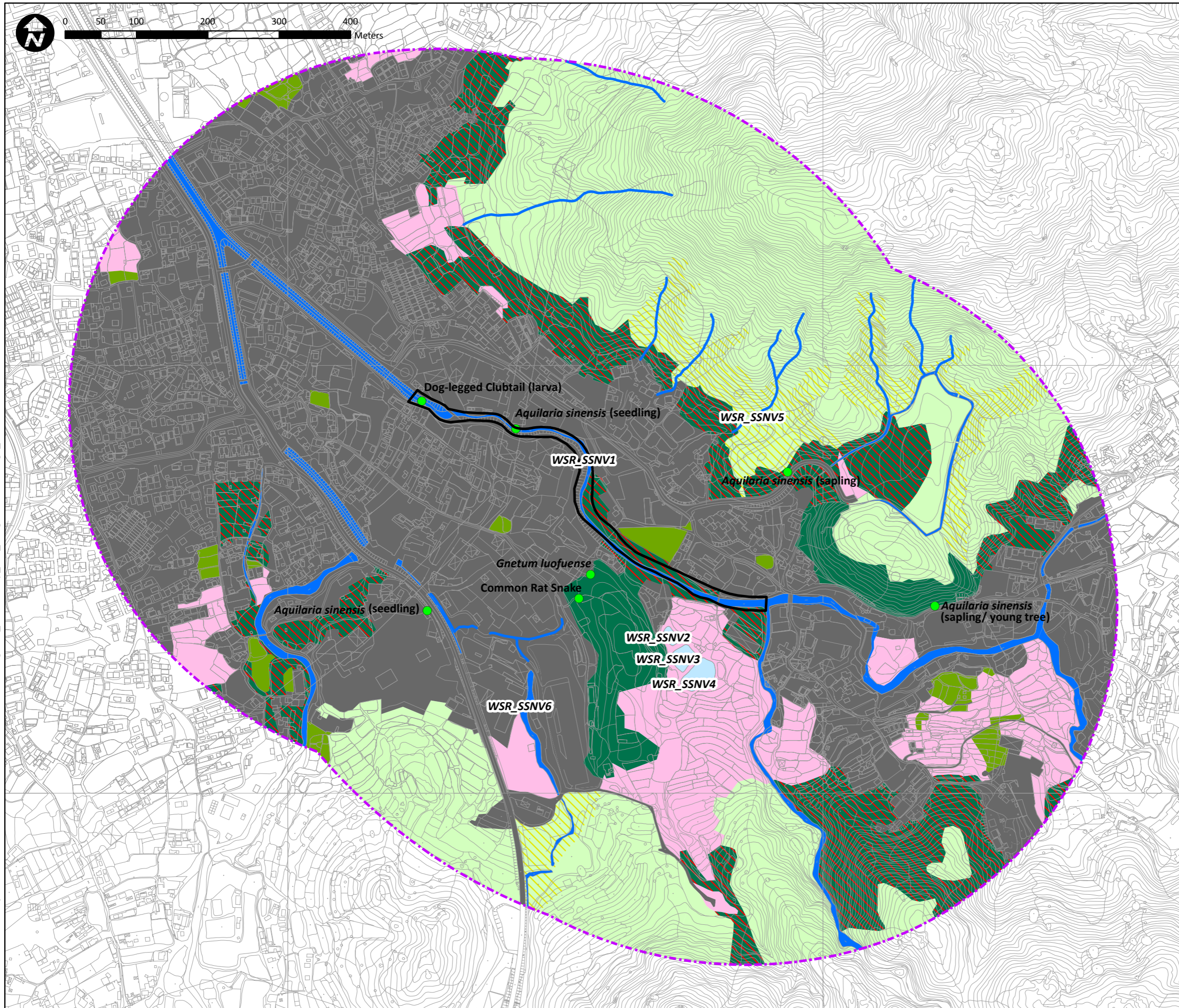


Document Path: D:\Project\CE222013(DS) PER and EIA\Info\GIS files\mxd\Figure5\_habitatmap\_SCS\_SungShanNewVillage\_20181002.mxd



● Species of Conservation Concern

▭ Work Limit Boundary

▭ 500m Study Area

**Habitat**

- Agricultural Land
- Pond
- Watercourse
- Grassland
- Grassland/Shrubland
- Secondary Woodland
- Plantation
- Waste Ground
- Urban/Residential Area

Dog-legged Clubtail (larva)

*Aquilaria sinensis* (seedling)

*Aquilaria sinensis* (sapling)

*Aquilaria sinensis* (seedling)

*Aquilaria sinensis* (sapling/ young tree)

*Gnetum luofuense*

Common Rat Snake

WSR\_SSNV1

WSR\_SSNV2

WSR\_SSNV3

WSR\_SSNV4

WSR\_SSNV5

WSR\_SSNV6



Project Title:  
**Agreement No. CE 22/2013 (DS)**  
**Drainage Improvement Works in Yuen Long, Stage 1**  
**Investigation, Design and Construction**

Figure Title:  
**Water Sensitive Receivers**  
**At Sung Shan New Village**

Drawn by:	ST	Scale:	1:4,980 on A3
Checked By:	EL	Date:	Sep 2019
Approved by:	JC		
Figure Number:	Figure 6.1		Revision:
			2