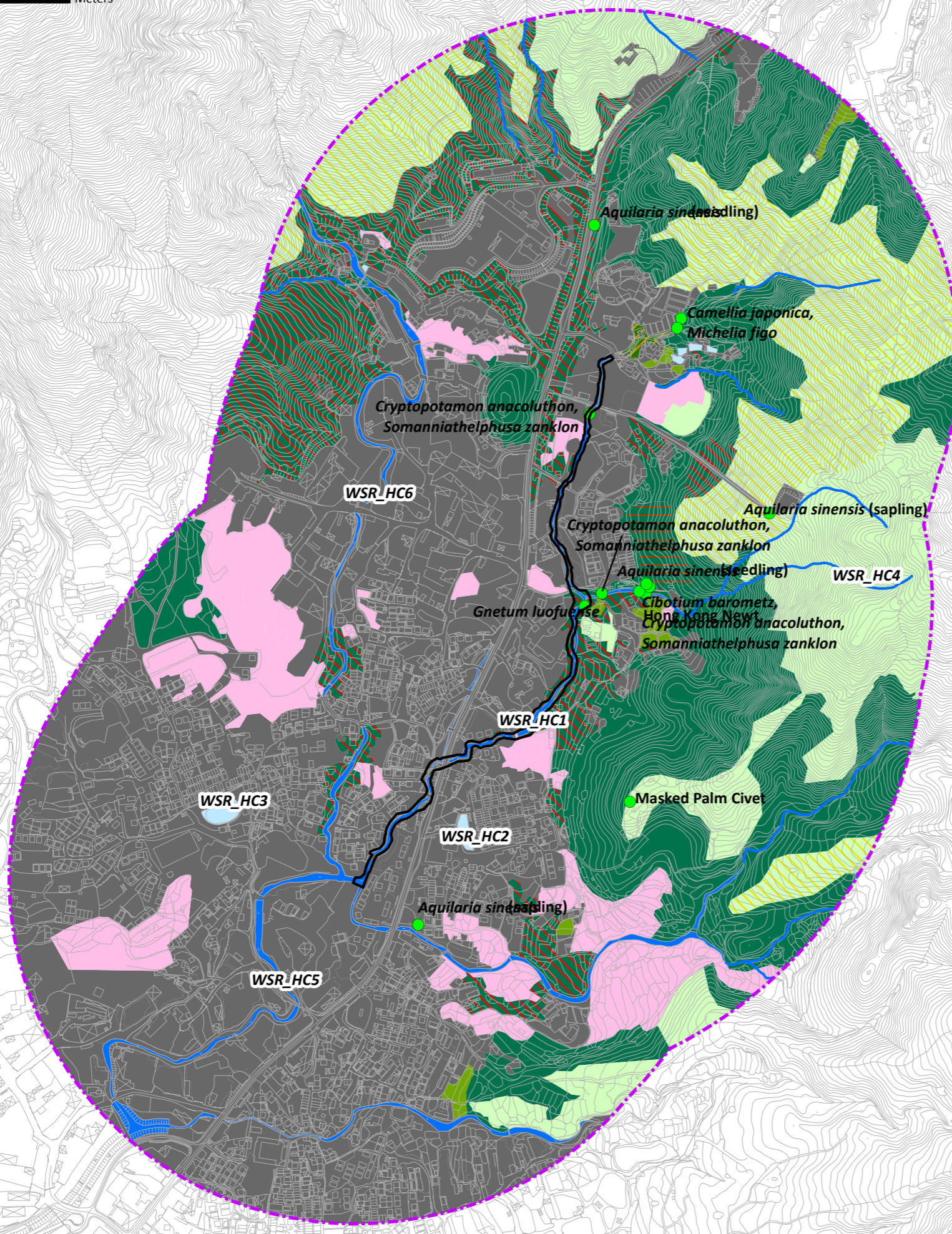




0 50 100 200 300 400 Meters



- Species of Conservation Concern
- 500m Study Area
- Work Limit Boundary
- Agricultural Land
- Pond
- Watercourse
- Grassland
- Grassland/Shrubland
- Secondary Woodland
- Fung Shui Wood
- Orchard
- Plantation
- Waste Ground
- Urban/Residential Area

Document Path: D:\Project\CE222013(DS) PER and EIA\Info\GIS files\mxd\Figure8ab_habitatmap_SCS_HaChe_20181002.mxd

ATKINS

Project Title:
Agreement No. CE 22/2013 (DS)
Drainage Improvement Works in Yuen Long, Stage 1
Investigation, Design and Construction

Figure Title:
Water Sensitive Receivers
At Ha Che

Drawn by:	ST	Scale:	1:6,820 on A3
Checked By:	EL	Date:	Oct 2018
Approved by:	JC		
Figure Number:	Figure 6.4		Revision: 1